



Tideway



**MORGAN
SINDALL**

Balfour Beatty

**TTT Working Group
Barn Elms & Putney Embankment Foreshore**

Thursday 11th October 2018

Tideway Project Update

September Timelapse Video

Click the link below to see what we have been up to across the project:

https://www.youtube.com/watch?v=cp_4Ao3GmdQ

Barn Elms



Chris North MSc IEng MICE

Section Manager | Putney Embankment Foreshore & Barn Elms

Barn Elms Overview



Barn Elms

Sport Centre Changing Rooms and Gym - Overview



Barn Elms

Sport Centre Changing Rooms and Gym – Last Meeting



Barn Elms

Sport Centre Changing Rooms and Gym - Works Completed



Barn Elms

Sport Centre Changing Rooms and Gym - Works Completed



Underfloor Heating

Screed Flooring & Internal Drainage



Barn Elms

Sport Centre Changing Rooms and Gym - Works in Progress

- External services
- Internal partitions and insulation
- Electrical works
- Plumping works
- Ventilation



Barn Elms

Sport Centre Changing Rooms and Gym - Works in Progress

**External Wall
Facades**



Barn Elms

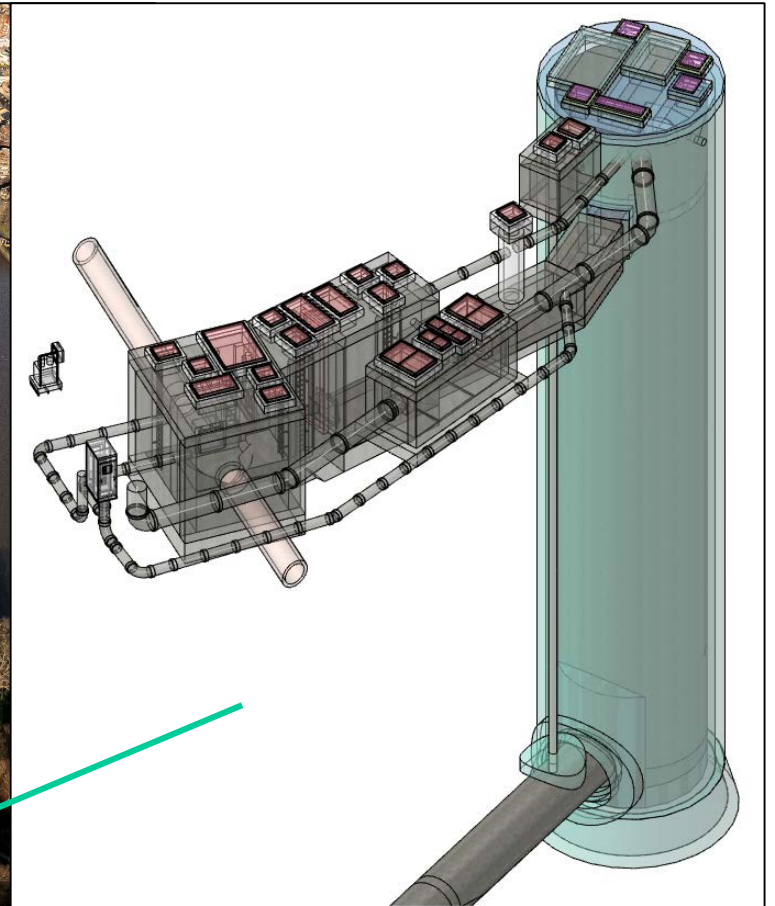
Sport Centre Changing Rooms and Gym - Upcoming Works

- Stairs
- Windows
- Doors
- Floor finishes
- Decoration
- Testing and commissioning
- Demolition of existing building #2
- External works – Hard and soft landscaping



Barn Elms

CSO Worksite - Overview



Barn Elms

CSO Worksite – Ongoing Works

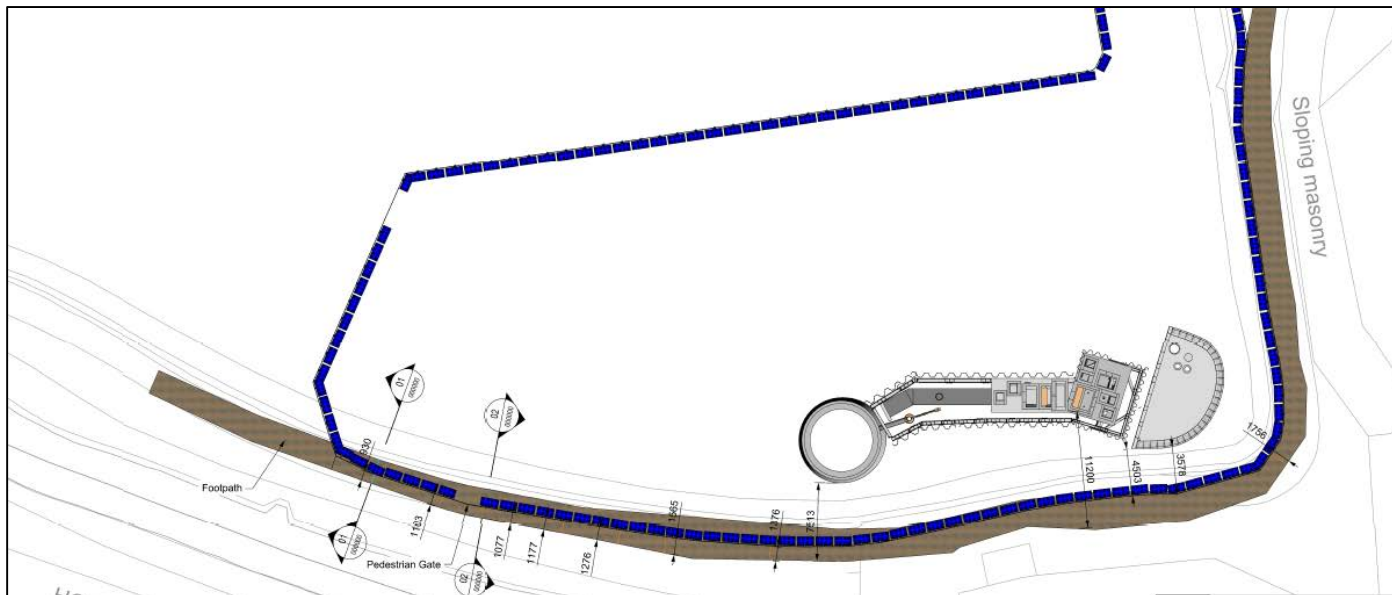
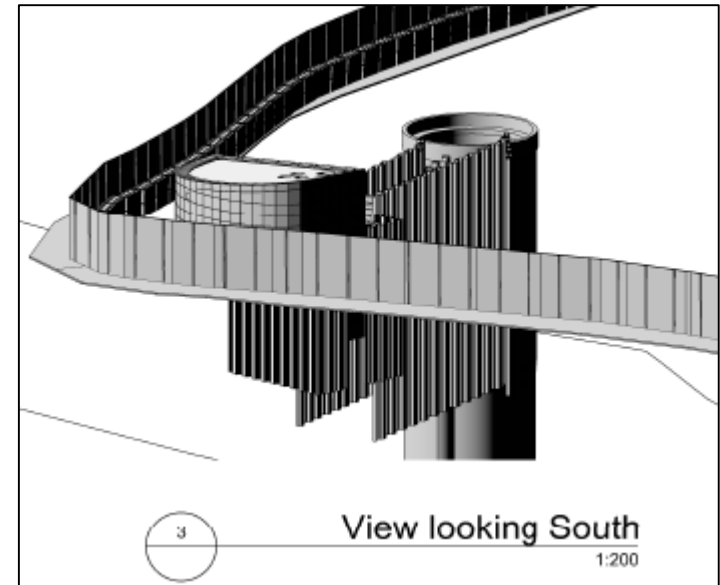
- Hoarding modifications for access from current site compound
- Establishment of the site perimeter security fencing
- Vegetation clearance



Barn Elms

CSO Worksite - Upcoming Works

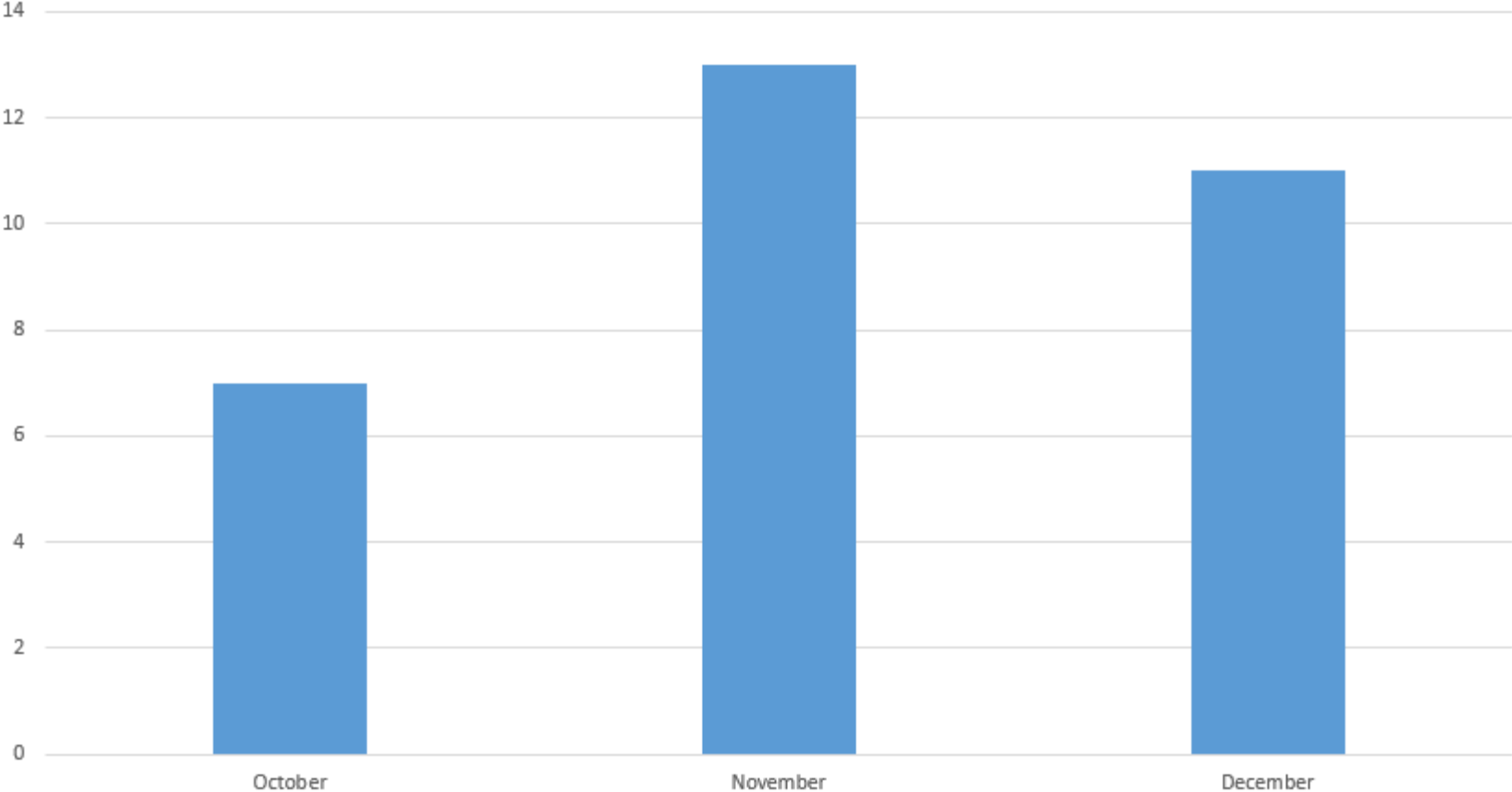
- CSO lining works
- Access road construction
- CSO site compound security hoarding
- Working mat construction
- 'Silent' sheet piling



Barn Elms

Vehicle movements

Predicted Heavy Goods Vehicles (HGVs) coming into site (Monthly Daily Average)
October - December 2018



An aerial photograph of the Barn Elms sports ground in London. The image shows a large green field with various sports pitches, including a football pitch and a tennis court. The River Thames flows along the left side of the field. In the background, there is a dense residential area with many buildings. The text "Barn Elms" is overlaid in the top left corner, and "Questions?" is overlaid in the center of the field. At the bottom, there is a name and title: "Chris North MSc IEng MICE Section Manager | Putney Embankment Foreshore & Barn Elms".

Barn Elms

Questions?

Chris North MSc IEng MICE

Section Manager | Putney Embankment Foreshore & Barn Elms

Putney Embankment Foreshore

A nighttime photograph of the Putney Embankment Foreshore. The sky is a mix of dark blue, purple, and orange, indicating a sunset or sunrise. The water in the foreground is dark with some ripples. In the middle ground, there are several buildings and structures along the embankment, some of which are illuminated with warm yellow and white lights. A prominent feature is a long, low structure with bright blue lights along its length. The overall scene is a mix of natural light from the sky and artificial city lights.

David Miles

Tideway Project Manager – Putney Embankment Foreshore

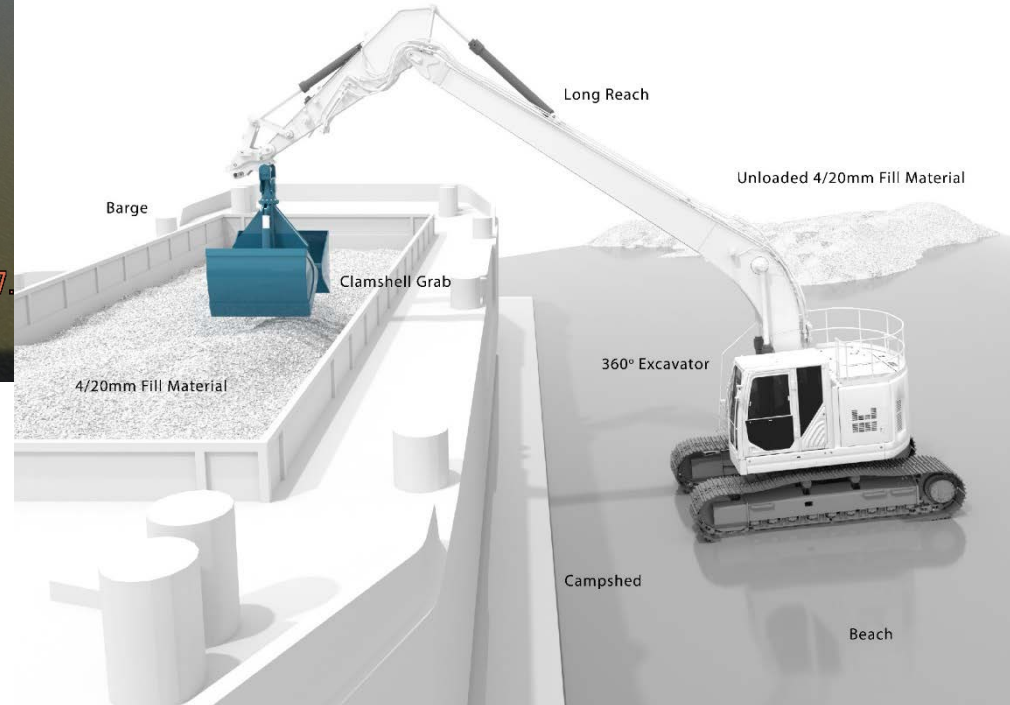
What we've been up to...

Completion of the Campshed which allows for safe mooring of barges



What we've been up to...

Installation of Foreshore Structure temporary cofferdam and refuge area



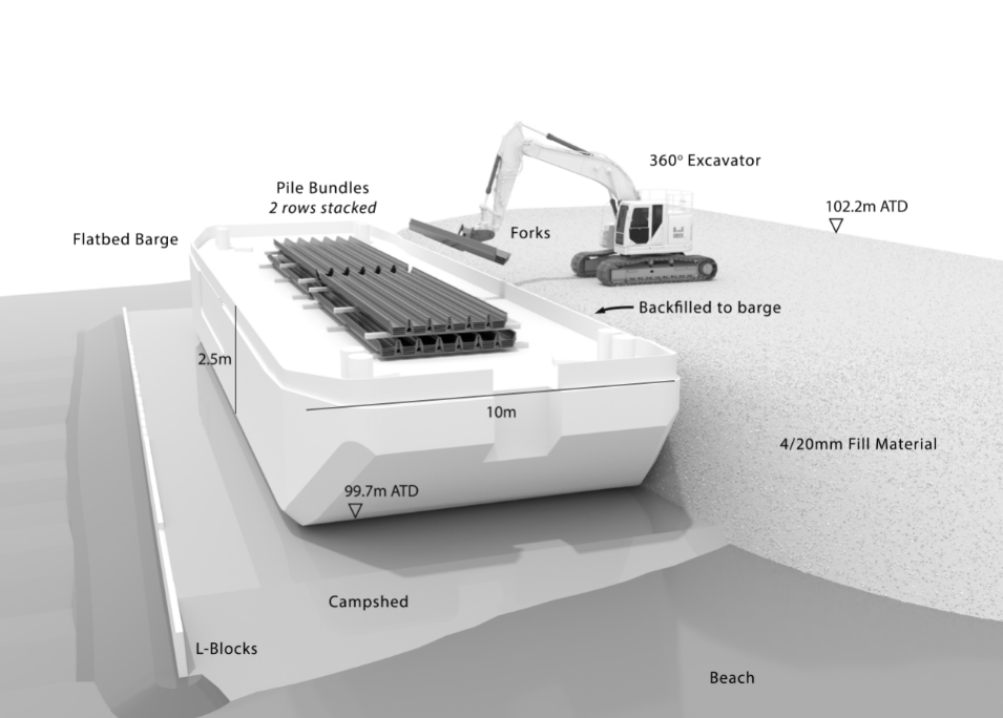
What we've been up to...

Temporary sheet piling for the cofferdam and refuge area



What we've been up to...

.....Piling continued



What we've been up to...

.....Piling continued



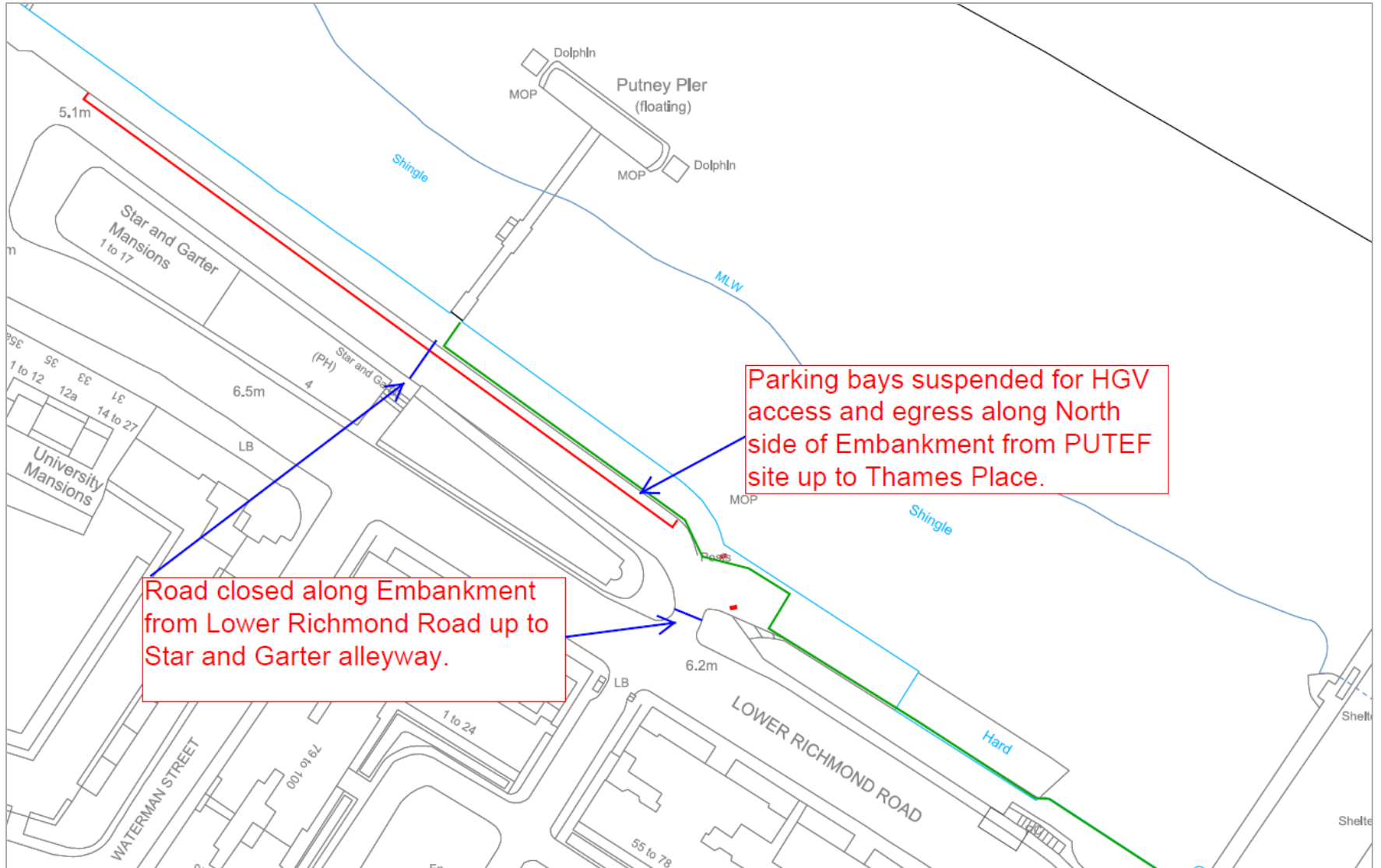
And looking forward...

- Augured piling works
- Large crane to be brought in at the end of the month
- New cabins for site welfare will arrive next week (w/c 15th October)
- Two week road closure from early November to remove previous welfare cabins
- Tunnelling plant and materials arrive on site in November
- Shaft excavation to start at end of 2018

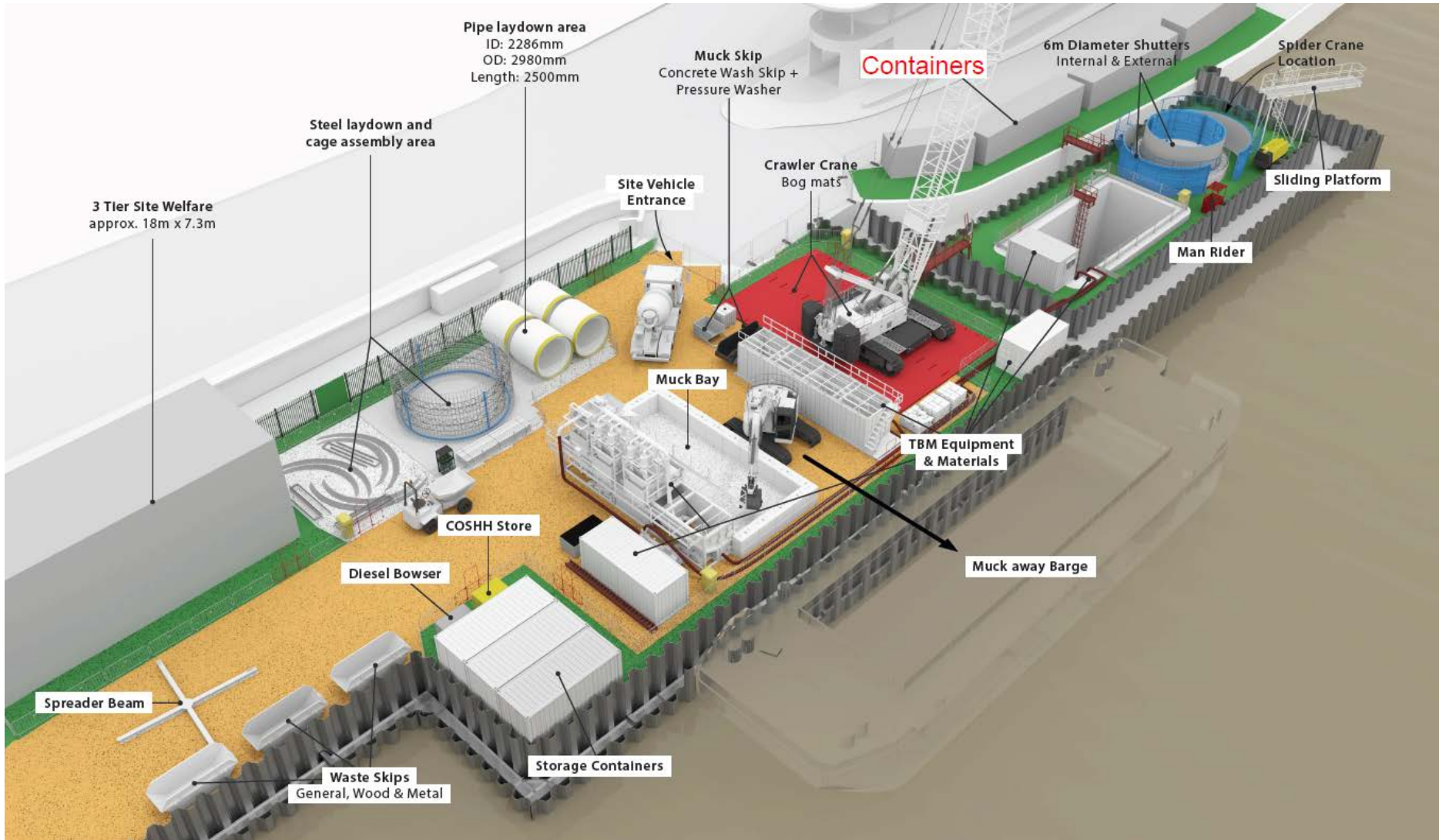


And looking forward...

Road closure

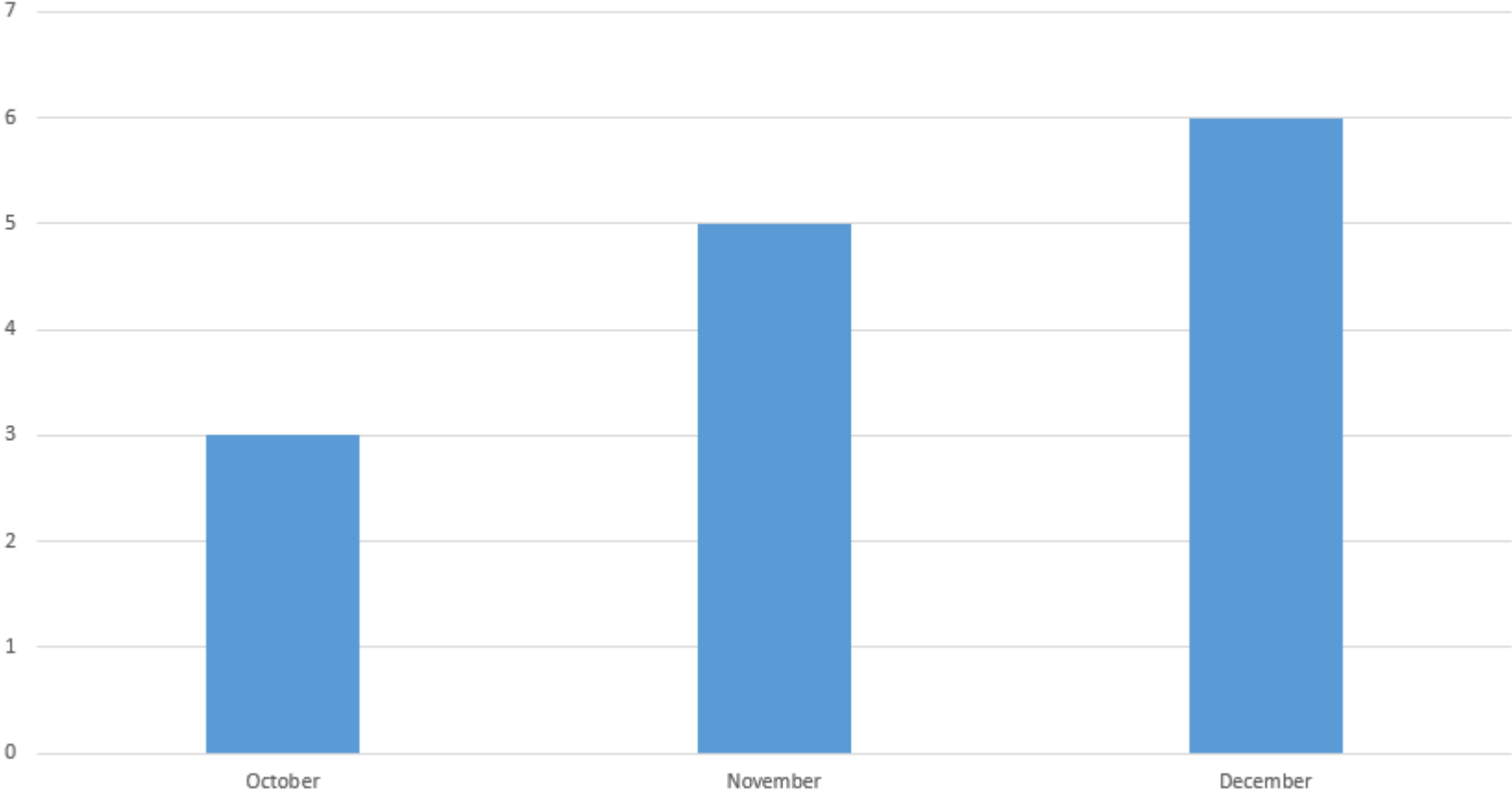


And looking forward...



Putney Embankment Foreshore Vehicle movements

Predicted Heavy Goods Vehicles (HGVs) coming into site (Monthly Daily Average)
October - December 2018



Putney Embankment Foreshore

More by river

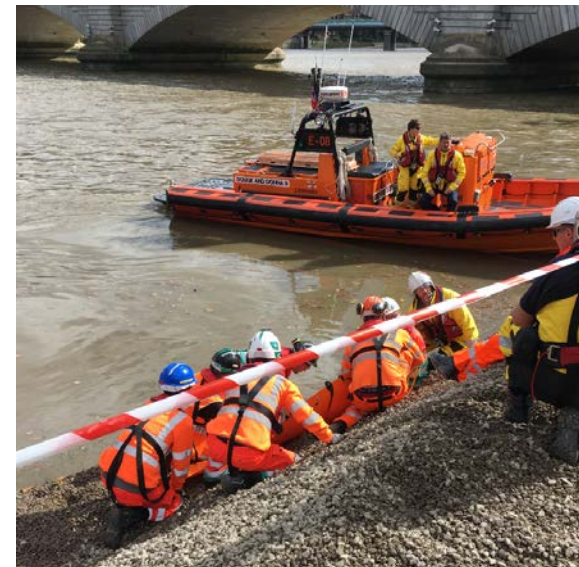
- Change to overall works method, using larger barges, will result in fewer barge movements on the river
- Each barge movement equates to approximately 40 HGV's removed from the local road network
- Since July we have had 25 barges arrive at Putney Embankment Foreshore, keeping approximately 1,000 lorries off the road



RNLI Safety drill



- 'Person in the water' drill
- Real life experience of water rescue and trauma first aid
- Invaluable training for site team and RNLI



Putney Embankment Foreshore

Questions?



HOW TO MAKE A CLAIM IF YOU ARE AFFECTED BY TIDEWAY'S WORK

Who do I go to for advice?

- Independent Advisory Service (IAS) Helpline for independent advice: **0800 917 8845** or info@tidewayias.co.uk
- Tideway's Compensation Officer, **Louise Davis**, for personal assistance and advice: via Tideway Helpdesk **08000 30 80 80** or helpdesk@tideway.london or direct **07971 077165** or louise.davis@tideway.london

How do I submit my claim?

- Louise can submit your claim to the Independent Compensation Panel (ICP) on your behalf, or
- You can submit your claim direct to the ICP: admin@tidewayicp.london
- The IAS can send you a claim form, or you can download a claim form from the Tideway website: www.tideway.london/help-advice/compensation-information/Independent-Compensation-Panel

Community Engagement

Patrick Kelly

Helpdesk



Tideway

Call: 08000 30 80 80

Email: helpdesk@tideway.london

Write to: Freepost TIDEWAY



Helpdesk have received 2 complaints linked to our scheme
Both responded to and satisfactorily closed out within 24 hours

BMB Tideway West Community Investment



BMB Tideway West Community Investment



BMB Tideway West Legacy



BMB Tideway West Legacy

- Volunteered 2800+ hours last year for local causes
- STEM volunteering – 1300+ hours at schools including Southfields Academy and Ark Putney Academy in Wandsworth
- 27 successful work placements over the summer
- 19 apprentices with 4 more joining in January
- Almost 1 in 50 employees is an ex-offender
- BMB collaborate with Women In Construction to push a more gender diverse workforce
- Almost 20% of employees live on local boroughs



BMB Tideway West Pink Hard Hats

- Pink hard hats will be worn across our seven sites in west London to support and raise money for Breast Cancer Care
- Breast Cancer Care is a fantastic organisation who has a vision to ensure that every person affected by breast cancer receives the best treatment, information and support



breast
cancer
care

Questions