



CARNWATH ROAD RIVERSIDE
Community Liaison Working Group

Monday 25 June 2018



Tideway

Carnwath Road Riverside

Past few months...

Dredging is complete

Hoarding erected

Shaft excavation – 30m currently

Final Magnetic Anomaly investigated

River wall 922 (west of site) strengthening works complete

Started piling at RW924 & 925 in preparation for spoil conveyor



Carnwath Road Riverside

Next few months...

Shaft excavation continues - complete mid September

Pressure relief wells - ongoing

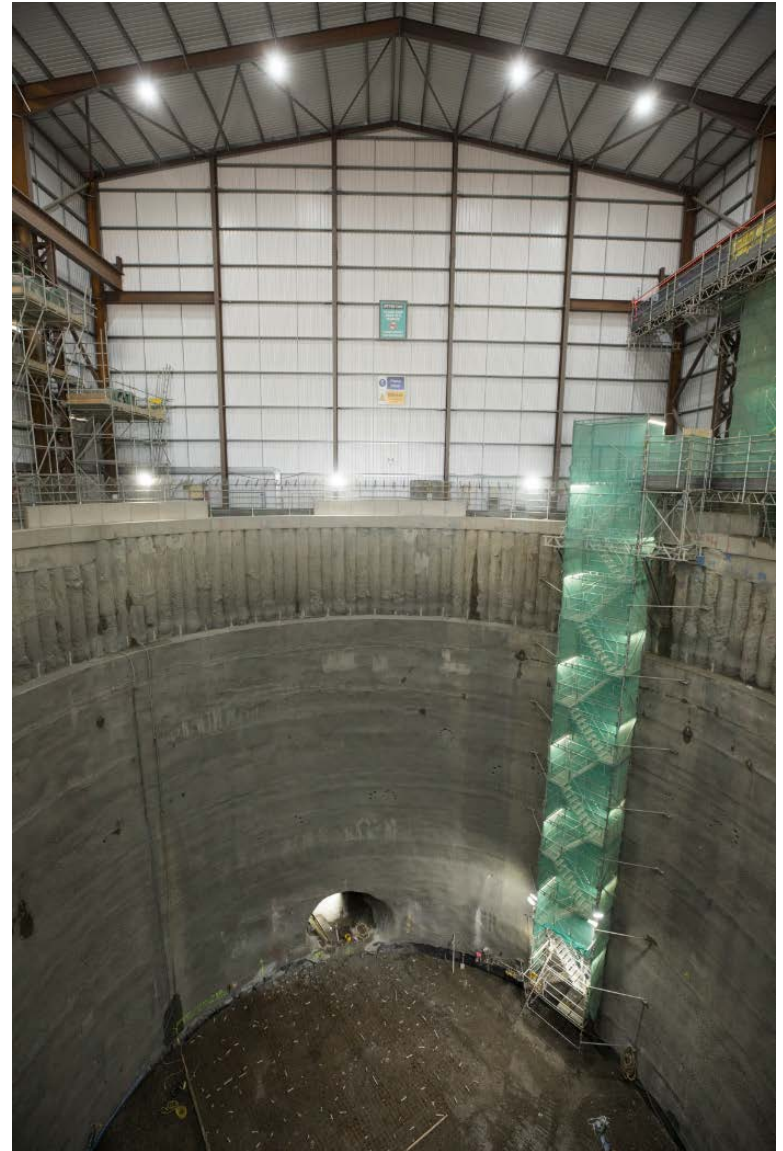
Piling at RW924 & 925 in preparation for spoil conveyor – complete this week

Out of hours crane delivery – 9th July 11pm

Base plug pour – date TBC

Spoil conveyor construction – September - December

Front and back shunts – October - November



Base Plug

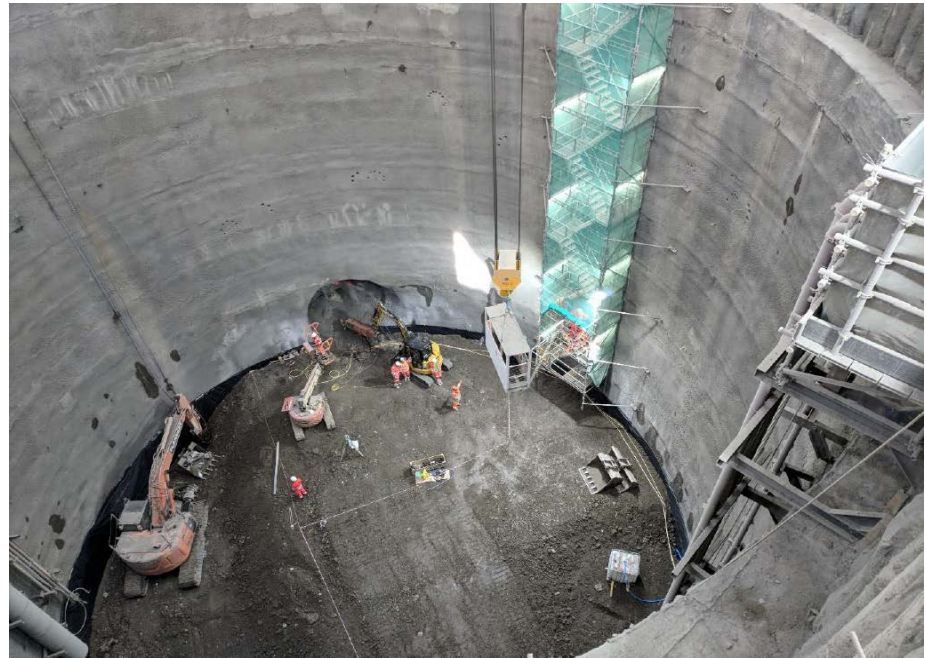
Volume of concrete 3000m³

Shaft diameter 26m, depth of pour 5.25m max

160 tonnes steel reinforcement

Expected rate of pour 75m³/hr

Continuous duration of pour 40hrs minimum



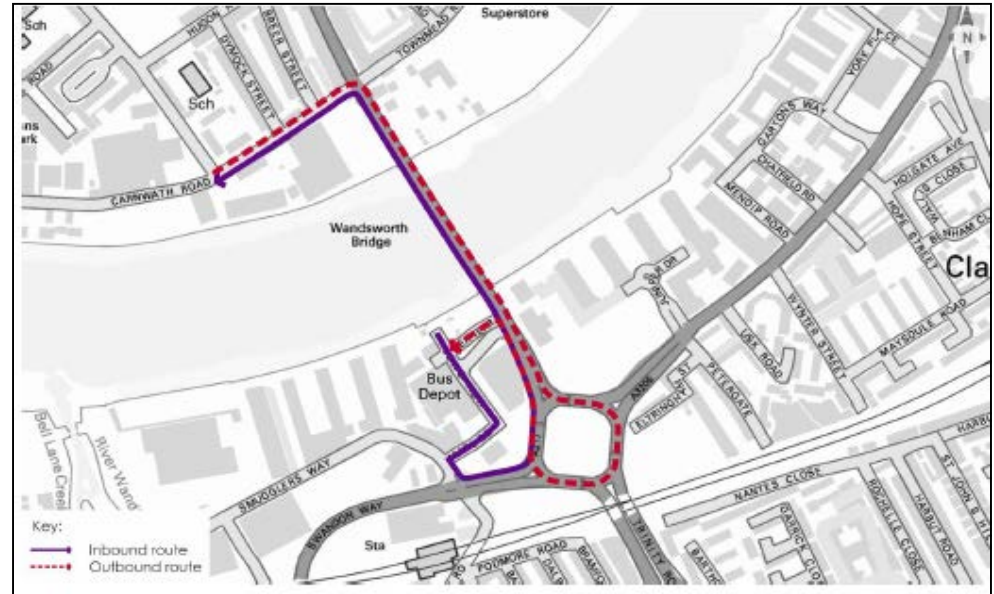
Base Plug

Number of concrete loads 429

2 Lorry mounted concrete pumps on site with further pump as back up

Primary batching plant 5 minutes from site

Secondary batching plant 16 minutes from site

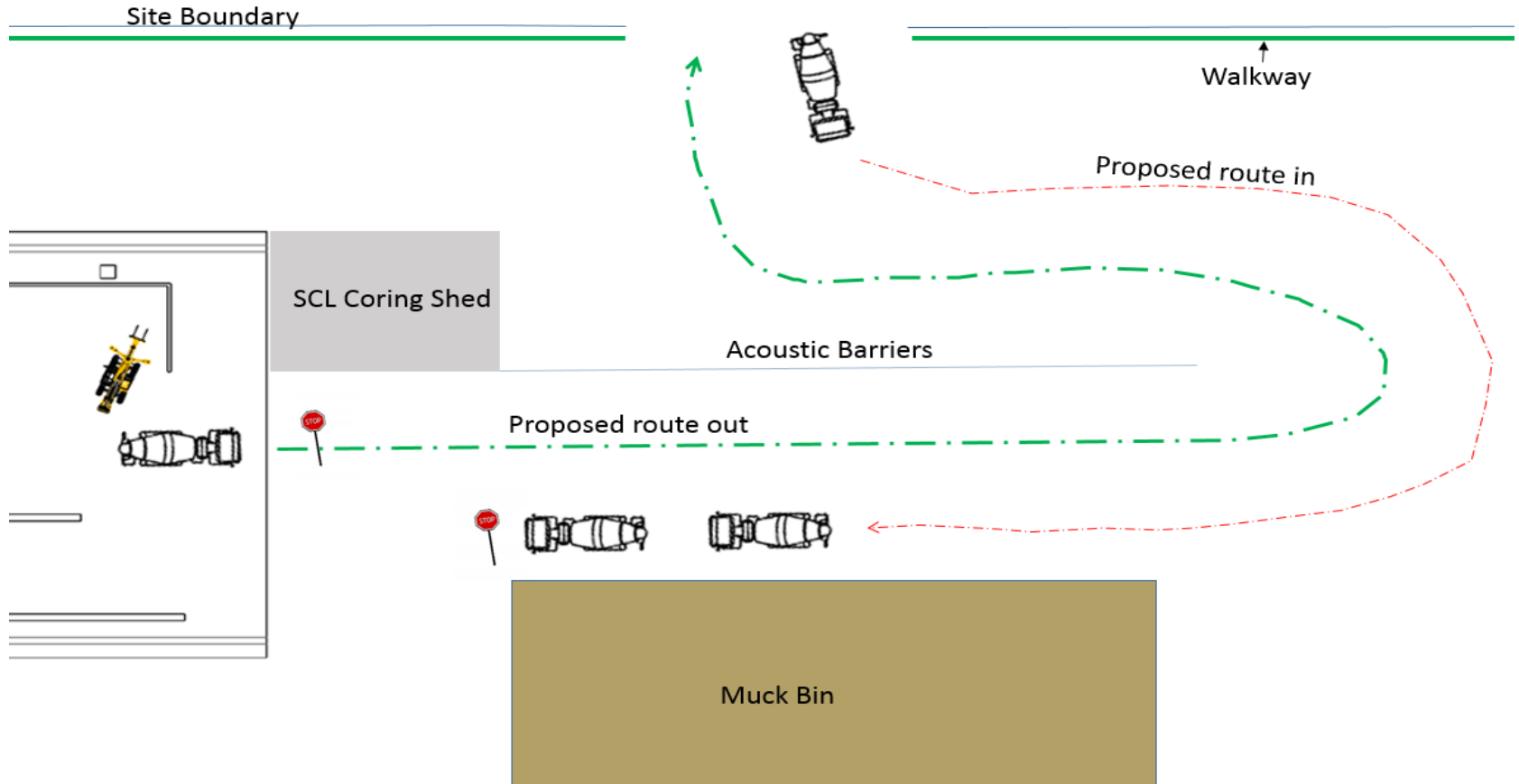


Becton - Lee Tunnel

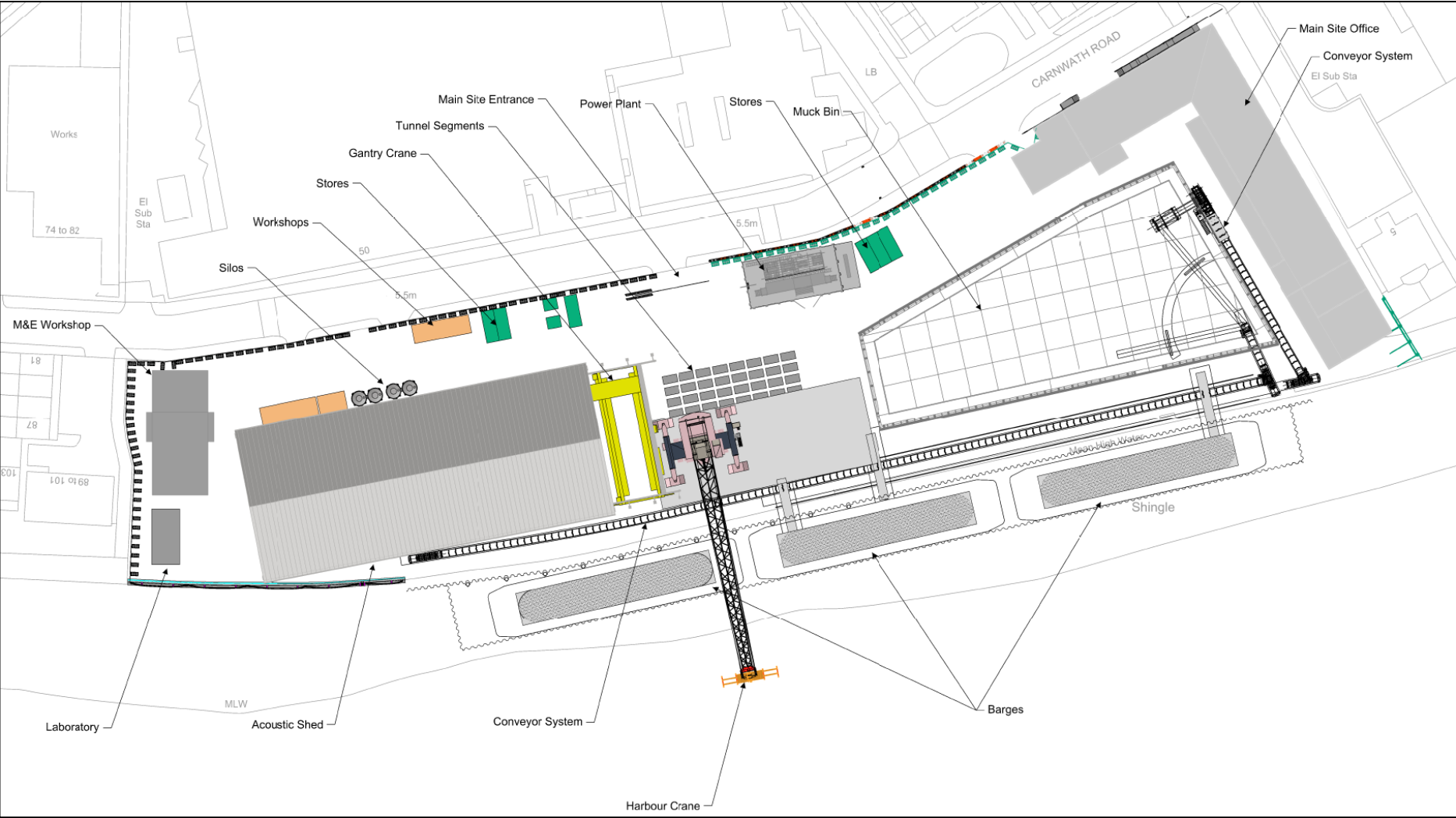
Base Plug Mitigation

- All vehicles entering shed stationed within screened holding area
- No vehicles will queue on Carnwath Road
- Radio link with concrete supplier to ensure number of vehicles on site is controlled
- All reversing of lorries to take place within shed, all lorries fitted with 'white noise' audible reversing alarm
- Between 10pm-8am the acoustic shed door opened only as far as necessary to clear concrete wagons
- Community Relations and Environmental teams on duty throughout

Base Plug Traffic plan



Carnwath Road Riverside Tunnelling site set-up



Carnwath Road Riverside

Complaints / Queries

54 complaints since last meeting:

- 48 x Noise & Vibration
- 3 x Lighting
- 3 x Miscellaneous

High quantity of noise and vibration complaints were as a result of dredging works and 'humming' noise from shed.



Call: 08000 30 80 80

Email: helpdesk@tideway.london

Write to: Freepost TIDEWAY

Carnwath Road Riverside

Additional mitigation measures

- Greasing of the barge spud-legs to minimise metal-on-metal noise (during dredging works)
- Reversing alarms on cranes and excavators muffled to drastically reduce noise output. Additional attended monitoring to establish potential sources of noise and impact at various locations around site
- Covers applied to the open areas on the south façade of the acoustic shed
- Additional lubricant applied to the bearings within extractor fans
- Flashing light to the north of shed screened



Carnwath Road Riverside

Additional mitigation measures

- Creation of 'lobby' area to north of shed with self-closing hinges to isolate noise
- Further briefings to teams regarding integrity of acoustic shed and ensuring that it is able to operate to its potential
- 'Elbows' applied to extractor vents on south façade to help direct any residual noise away from residents
- Construction of an acoustic enclosure around the compressor
- Briefing of 'black hats' by Community Relations Manager and members of Senior Management Team on importance of community consideration
- Removal of metal gates throughout site

Considerate Behaviour



Don't

- Make unnecessary noise whilst working at night
- Ignore anything that may cause a disturbance
- Park in/around area
- Order takeaway deliveries to site
- Have radios unnecessarily loud when outside the shed
- Leave window blinds open at the end of the day
- Workshops external to the shed are NOT to be used at night

Do

- Think like a resident
- Challenge inconsiderate behaviour
- Act - if you see something, take action
- Behave in a manner that is respectful to neighbours
- Ensure your radio volume is set according to conditions
- Gently close acoustic shed doors
- Any power tools used should be locally screened – even within the shed

Carnwath Road Riverside

Barge movements

- Environmentally sensitive tugs – Christian and Felix
- 47 barges to Carnwath Road Riverside since January
- Removed 40,191 tonnes of spoil from shaft excavation
- Each 1000 tonne barge equates to 50 lorries
- Approximately 2350 lorries kept off London road network as a result of commitment to move More By River



BMB Tideway West Community Investment



BMB Tideway West

Local Community Investment

Donation to Our Lady of Perpetual Help
– Asylum Seekers Project

Financial assistance to local resident
groups for summer festivities

Volunteering at RISE elderly care
centre

SEAPIA – Staff quiz, proceeds to
charity

Sheltered housing – Fish & Chips
provided for St George's Day



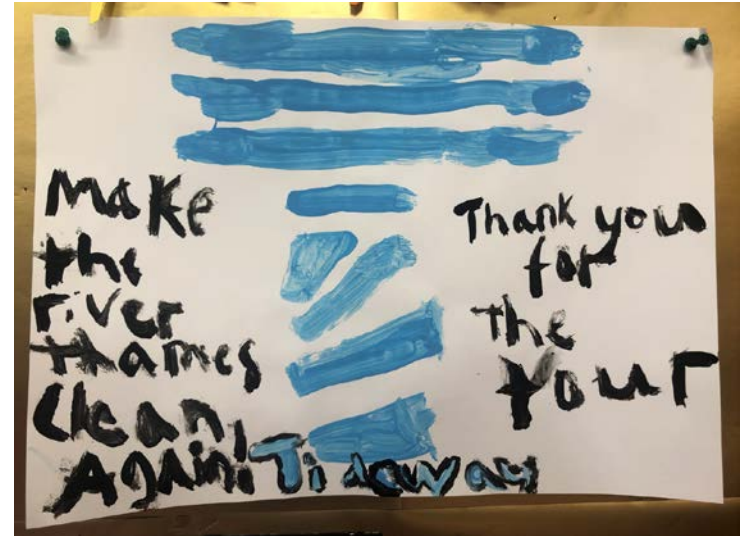
BMB Tideway West Local Community Investment

Contributing towards a coach trip being organised by the Carnwath Road Residents Group over the summer holidays

Having windows cleaned for those properties directly within the vicinity of our site. We are looking to do this again later in the year

Distributing car washing vouchers for those properties directly within the vicinity of our site

We will be making a donation to SEAPIA for their new kitchen



BMB Tideway West Legacy



BMB Tideway West Legacy

- Volunteered 2000+ hours last year for local causes
- STEM volunteering – 800+ hours at schools including Hurlingham Academy and St John Lillie Primary School in Hammersmith & Fulham
- 16 apprentices with 6 more joining shortly
- Almost 1 in 50 employees is an ex-offender
- Almost 20% of employees live on local boroughs



HOW TO MAKE A CLAIM IF YOU ARE AFFECTED BY TIDEWAY'S WORK

Who do I go to for advice?

- Independent Advisory Service (IAS) Helpline for independent advice: **0800 917 8845** or info@tidewayias.co.uk
- Tideway's Compensation Officer, **Louise Davis**, for personal assistance and advice: via Tideway Helpdesk **08000 30 80 80** or helpdesk@tideway.london or direct **07971 077165** or louise.davis@tideway.london

How do I submit my claim?

- Louise can submit your claim to the Independent Compensation Panel (ICP) on your behalf, or
- You can submit your claim direct to the ICP: admin@tidewayicp.london
- The IAS can send you a claim form, or you can download a claim form from the Tideway website: www.tideway.london/help-advice/compensation-information/Independent-Compensation-Panel