



Tideway



**MORGAN
SINDALL**

Balfour Beatty

**TTT Working Group
Barn Elms & Putney Embankment Foreshore**

Thursday 7th February 2019

Tideway Project Update

January Timelapse Video

Click the link below to see what we have been up to across the project:

https://www.youtube.com/watch?v=h7W_hoEEq_E

Barn Elms



Bhavini Vyas

Project Manager | Barn Elms

Barn Elms Overview



Barn Elms

Sport Centre Changing Rooms and Gym - Overview



Barn Elms

Sport Centre Changing Rooms and Gym



December 2017

December 2018



Barn Elms

Sport Centre Changing Rooms and Gym - Works completed to date

Ventilation on roof



Office

Barn Elms

Sport Centre Changing Rooms and Gym - Works completed to date

Changing room 2

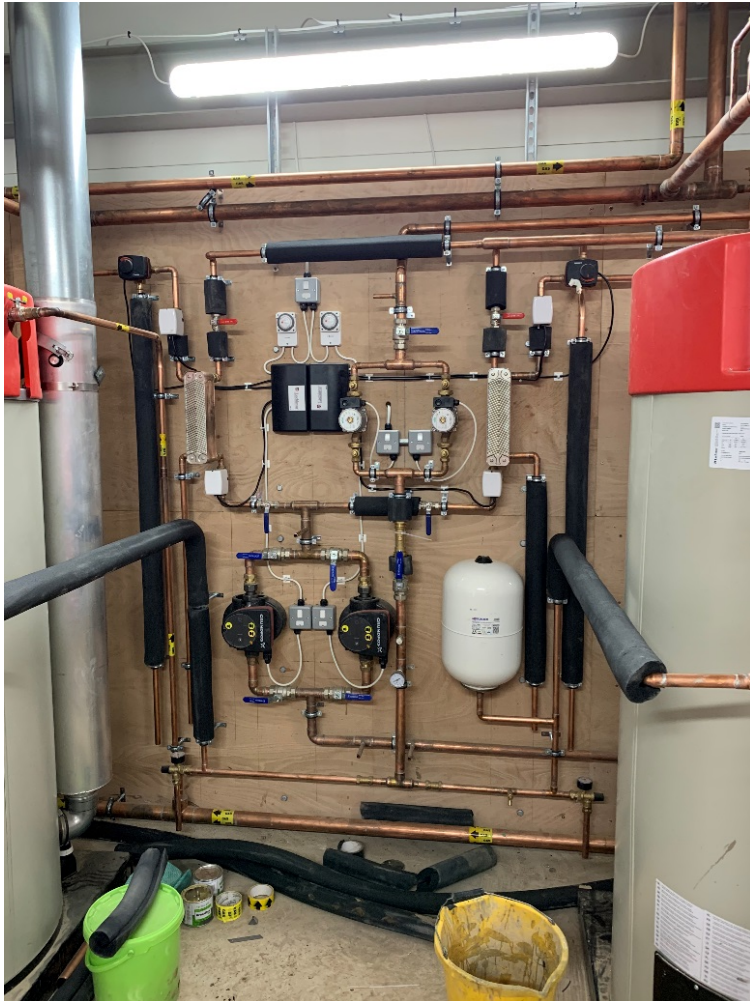


Windows and doors

Barn Elms

Sport Centre Changing Rooms and Gym - Works in progress

Plant room



Gym

Barn Elms

Sport Centre Changing Rooms and Gym - Works in progress



Reception

Footpath under canopy



Barn Elms

Sport Centre Changing Rooms and Gym - Works in progress



External wall facades

Barn Elms

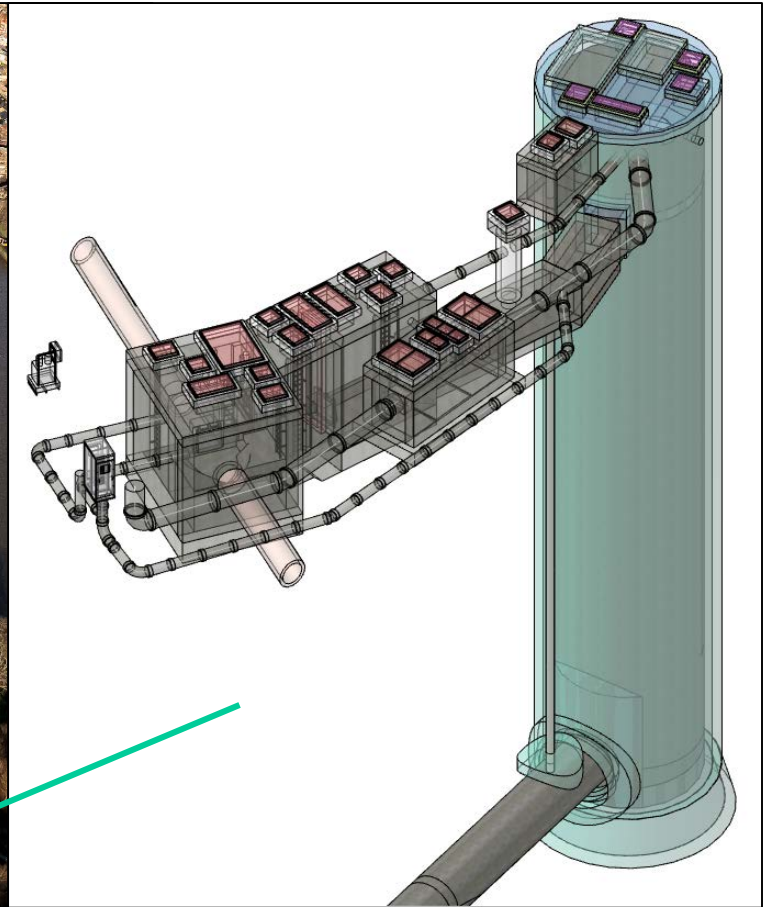
Sport Centre Changing Rooms and Gym - Upcoming Works

- Demolition of existing building #2
- External works – Hard and soft landscaping



Barn Elms

CSO Worksite - Overview



Barn Elms

CSO Worksite – Works Completed

Temporary access road



CSO Lining works

Barn Elms

CSO Worksite – Works Completed to date



Piling mat

Barn Elms

CSO Worksite – Works Ongoing



Establishment of the site perimeter security fencing



Site set up – welfare, storage, pedestrian routes

Barn Elms

CSO Worksite – Works Ongoing

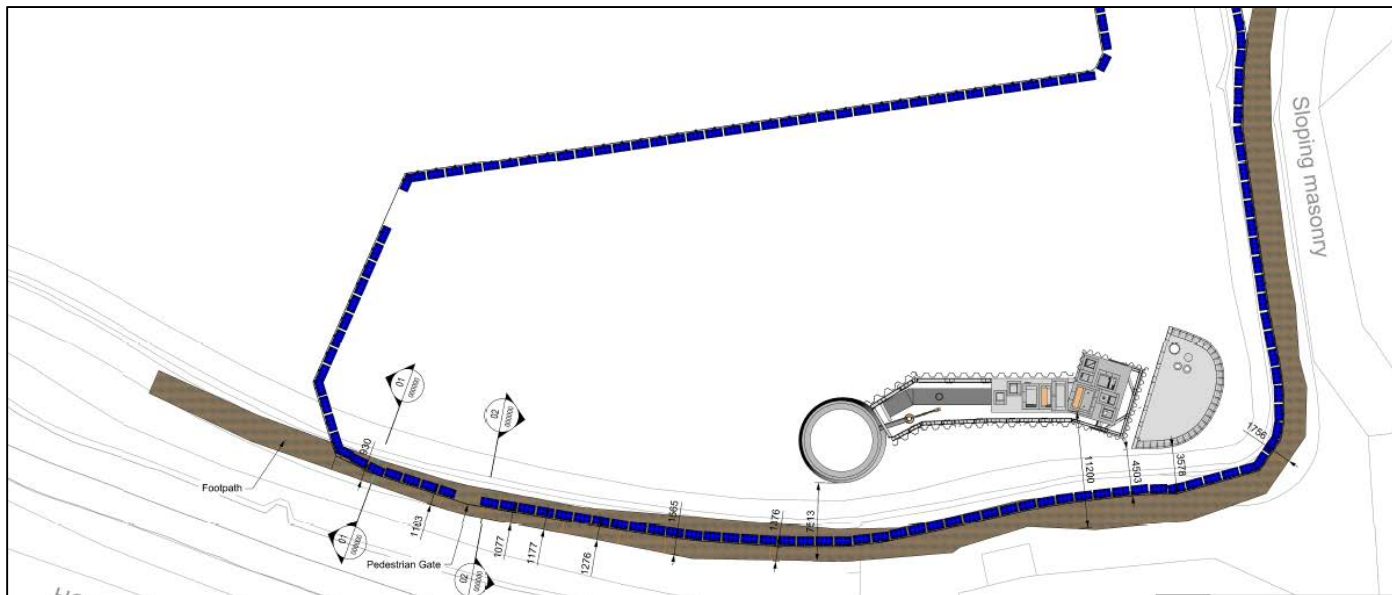
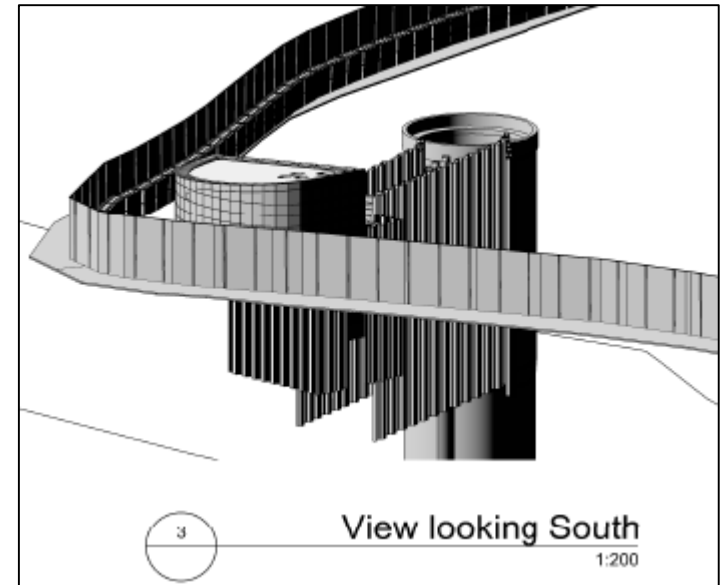


Sheet piling

Barn Elms

CSO Worksite - Upcoming Works

- Shaft excavation
- SCL works
- Archaeological works
- Kiosk excavation



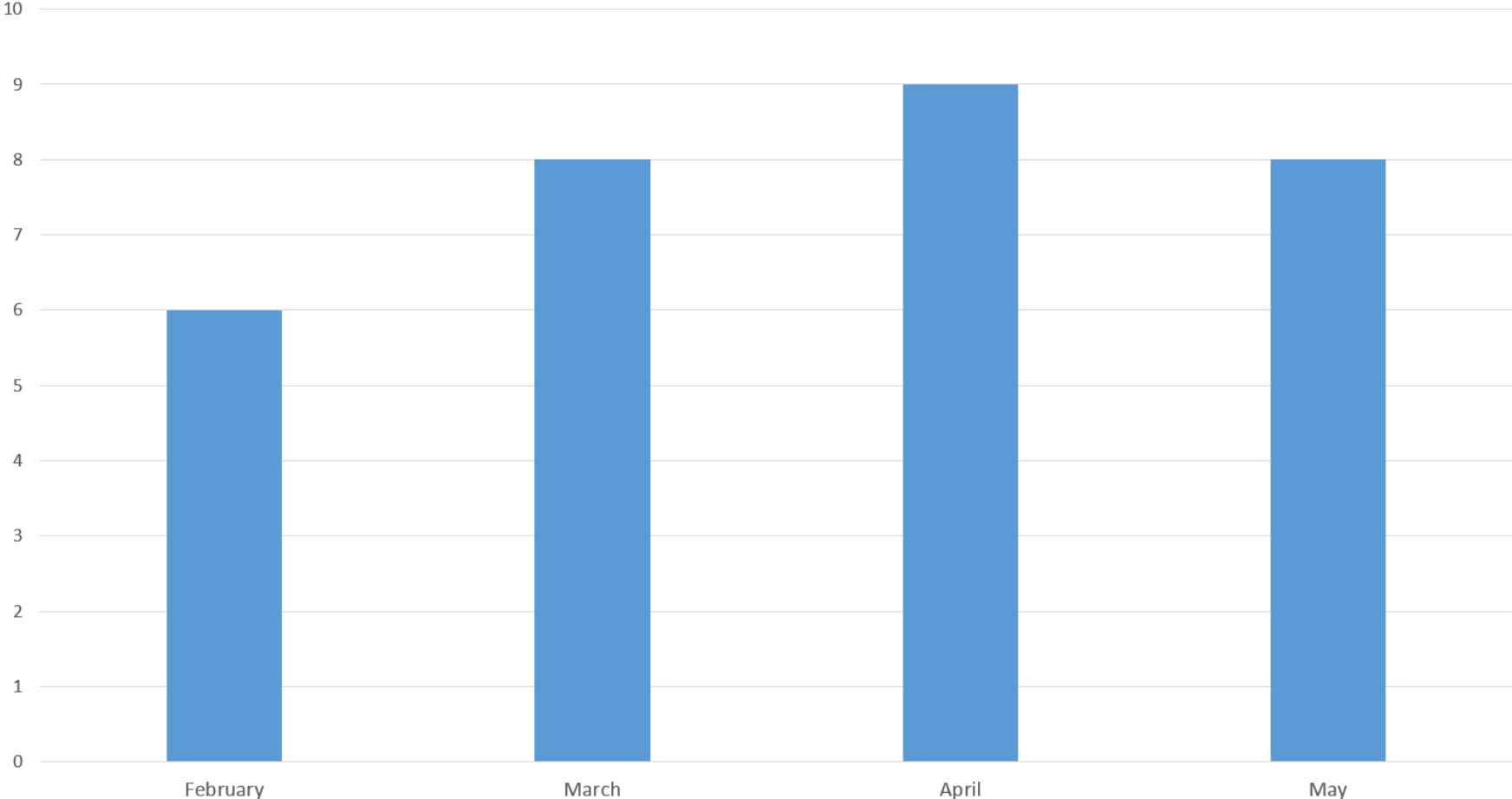
Barn Elms CSO Worksite



Barn Elms

Vehicle movements

Predicted Heavy Goods Vehicles (HGVs) arriving on site (Monthly Daily Average)
February - May 2019



An aerial photograph of the Barn Elms sports ground in London. The image shows a large green field with various sports markings, including a football pitch and a tennis court. The ground is surrounded by trees and a river on the left. In the background, there is a dense urban area with many buildings. The text "Barn Elms" is overlaid in the top left corner, and "Questions?" is overlaid in the center of the field. In the bottom left corner, the name "Bhavini Vyas" and the title "Project Manager | Barn Elms" are overlaid.

Barn Elms

Questions?

Bhavini Vyas
Project Manager | Barn Elms

Putney Embankment Foreshore



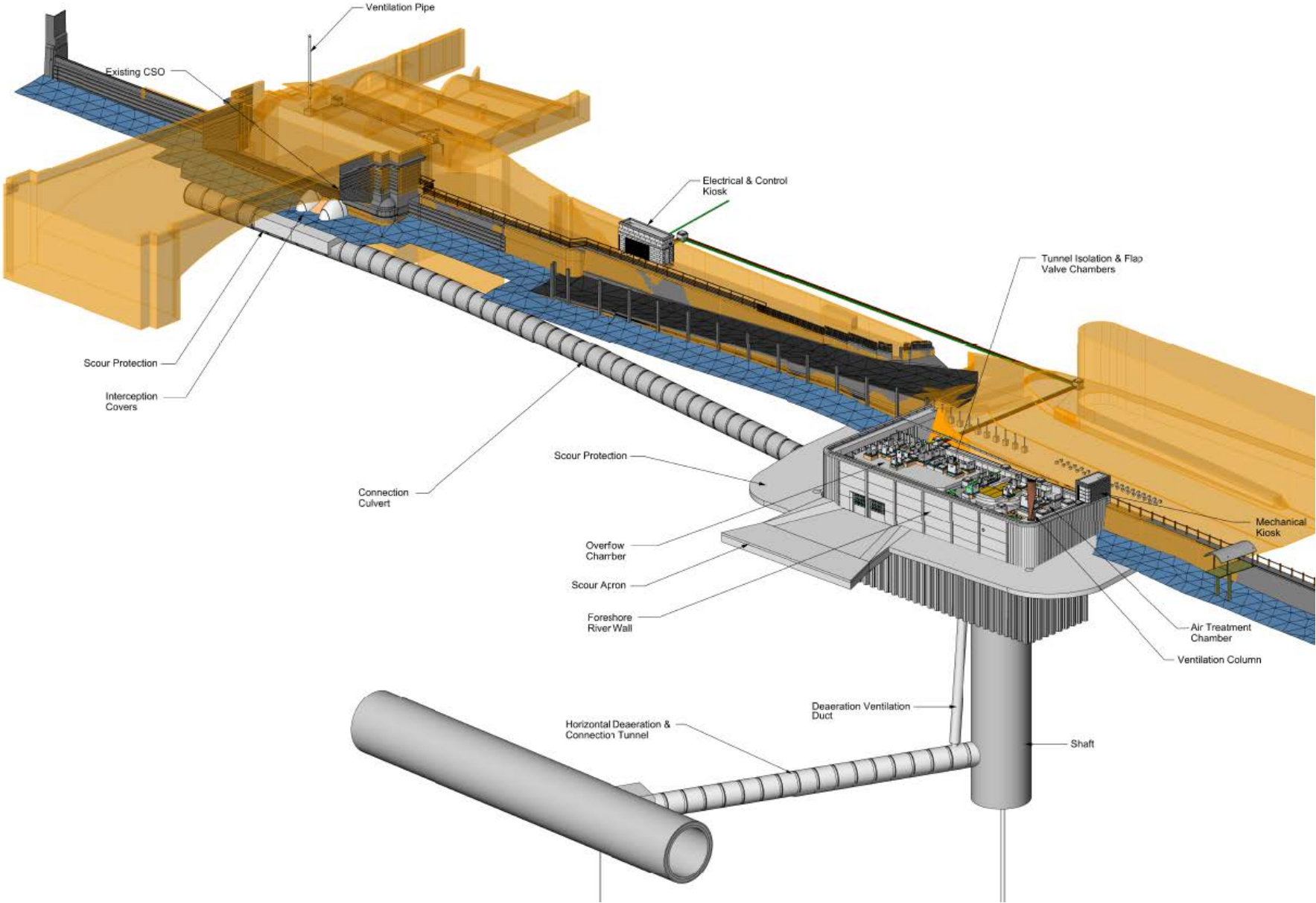
Tom Brown CEng MICE

Site Agent BMB JV – Putney Embankment Foreshore

The Putney Scheme overview



The Putney Scheme overview



Current progress



What we've been up to...

Completion of the internal permanent cofferdam (Dec 2018)



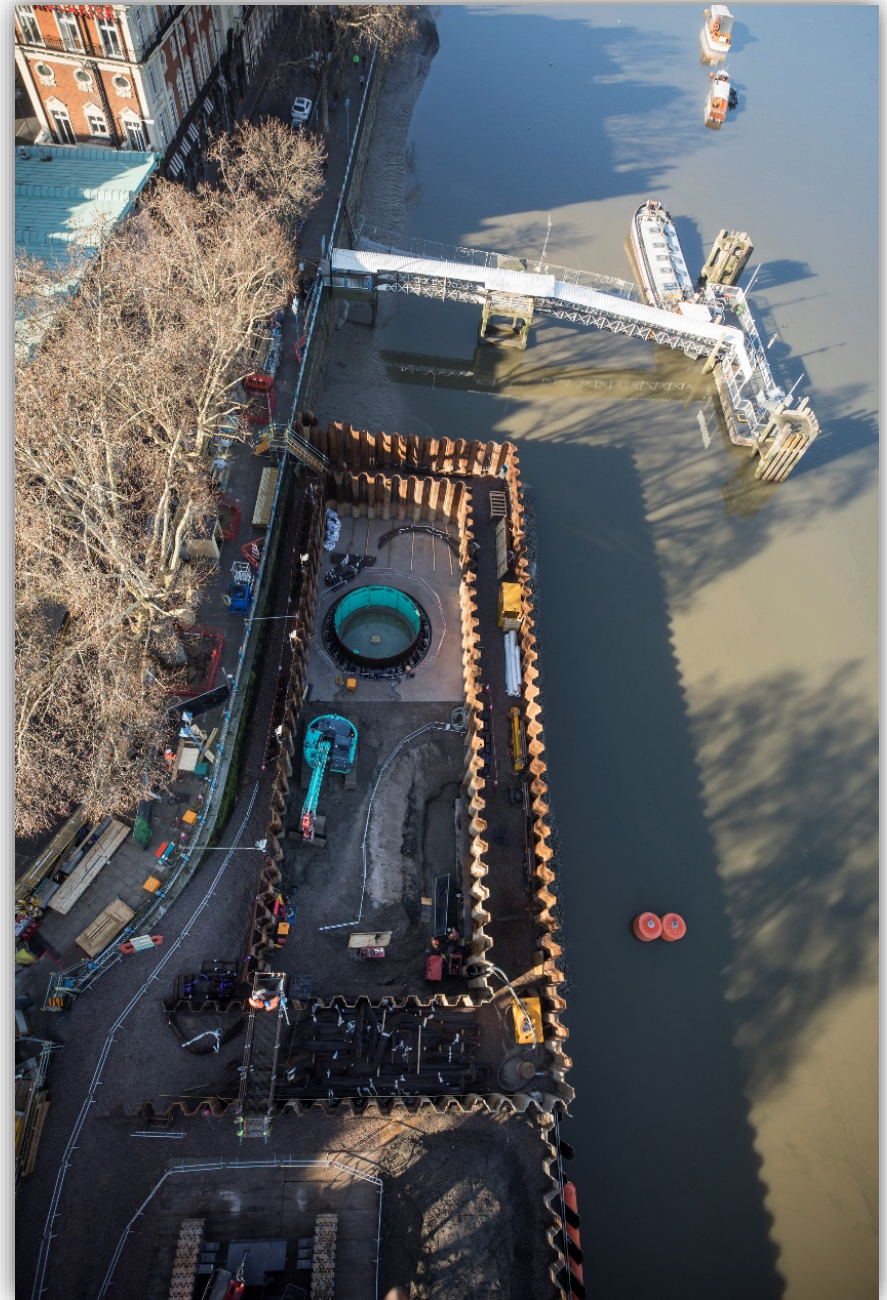
What we've been up to...

The internal cofferdam level has been reduced by 3m and some future connections piles have been installed



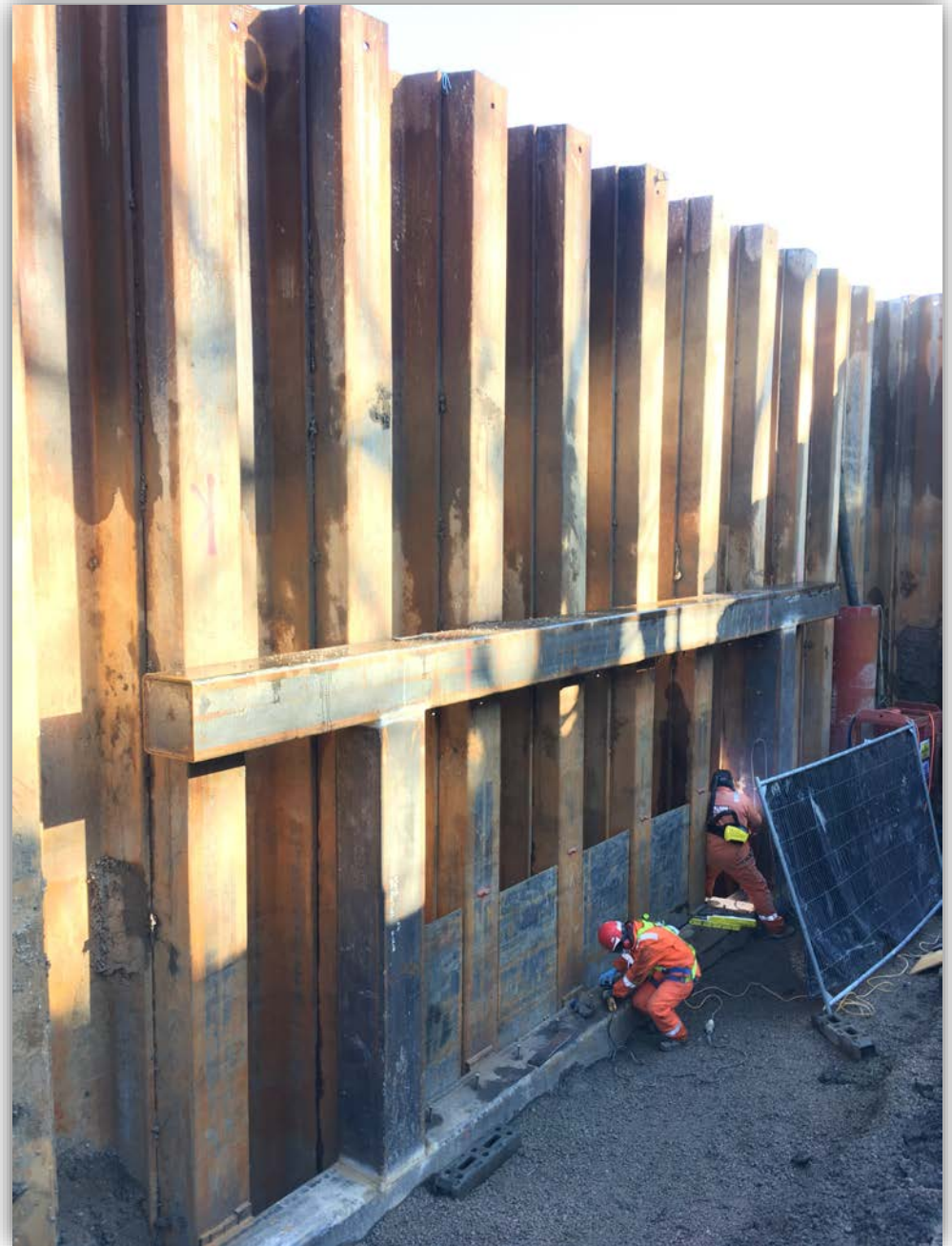
What we've been up to...

Drop shaft cutting edge and internal shutter installed



What we've been up to...

CSO headwall frame installation



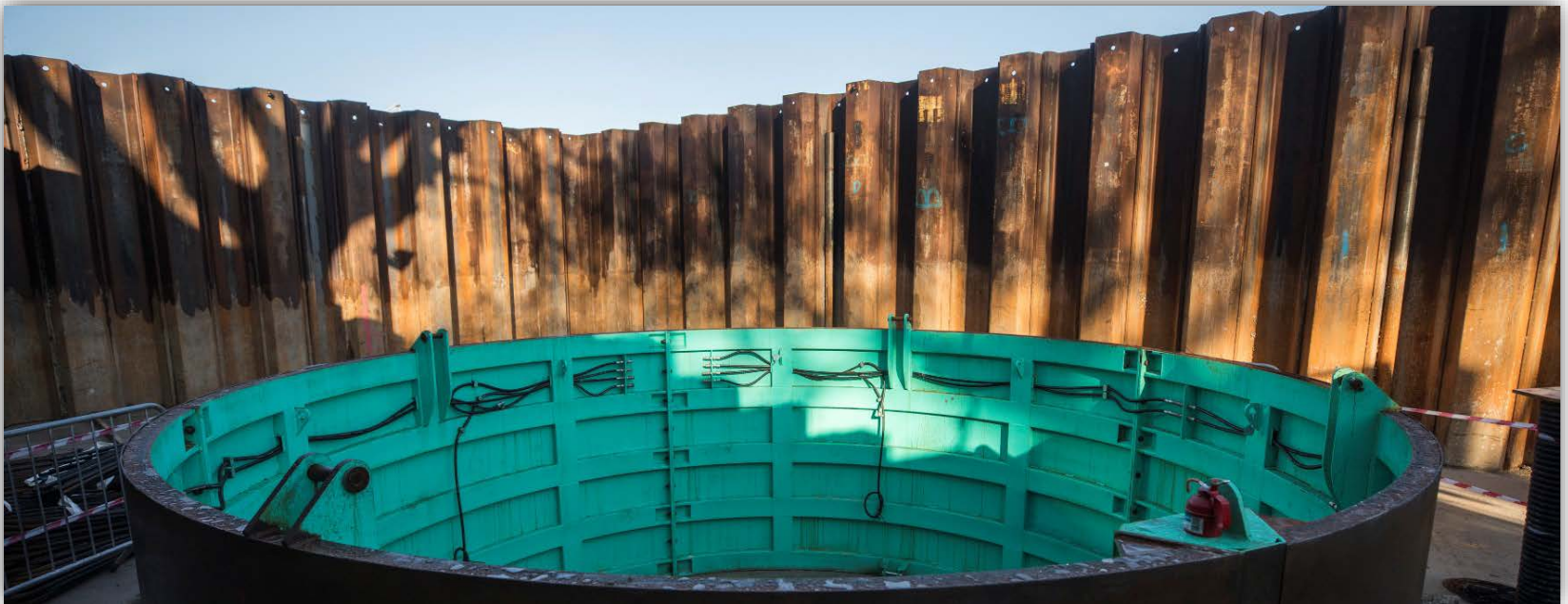
What we've been up to...

Preparations for the drop shaft have begun

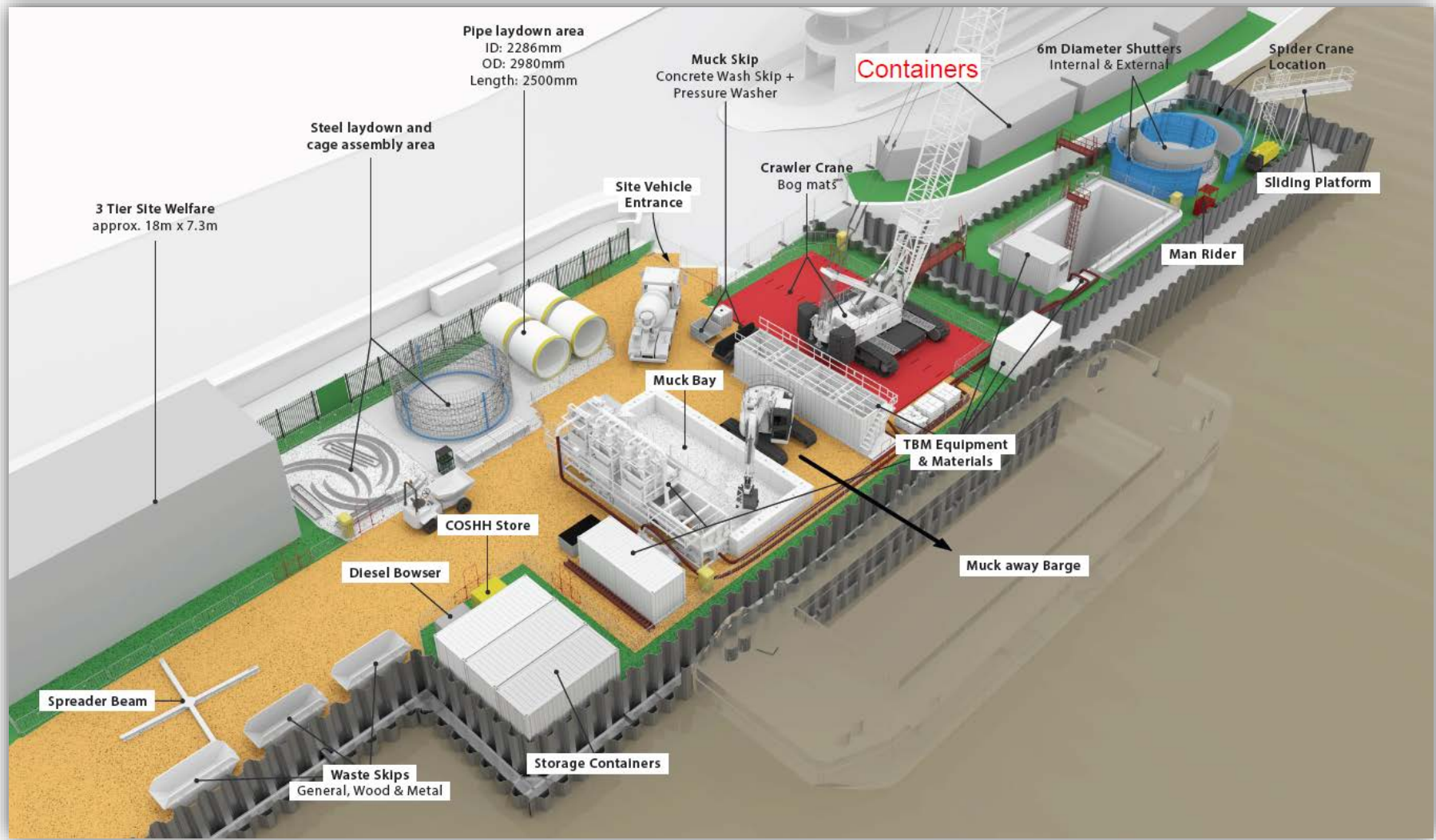


And looking forward...

- Commencing shaft excavation end of February
- Beginning of tunnelling April/ May
- Shaft and tunnels works all currently planned to be day shift working only



And looking forward...our site setup in the spring

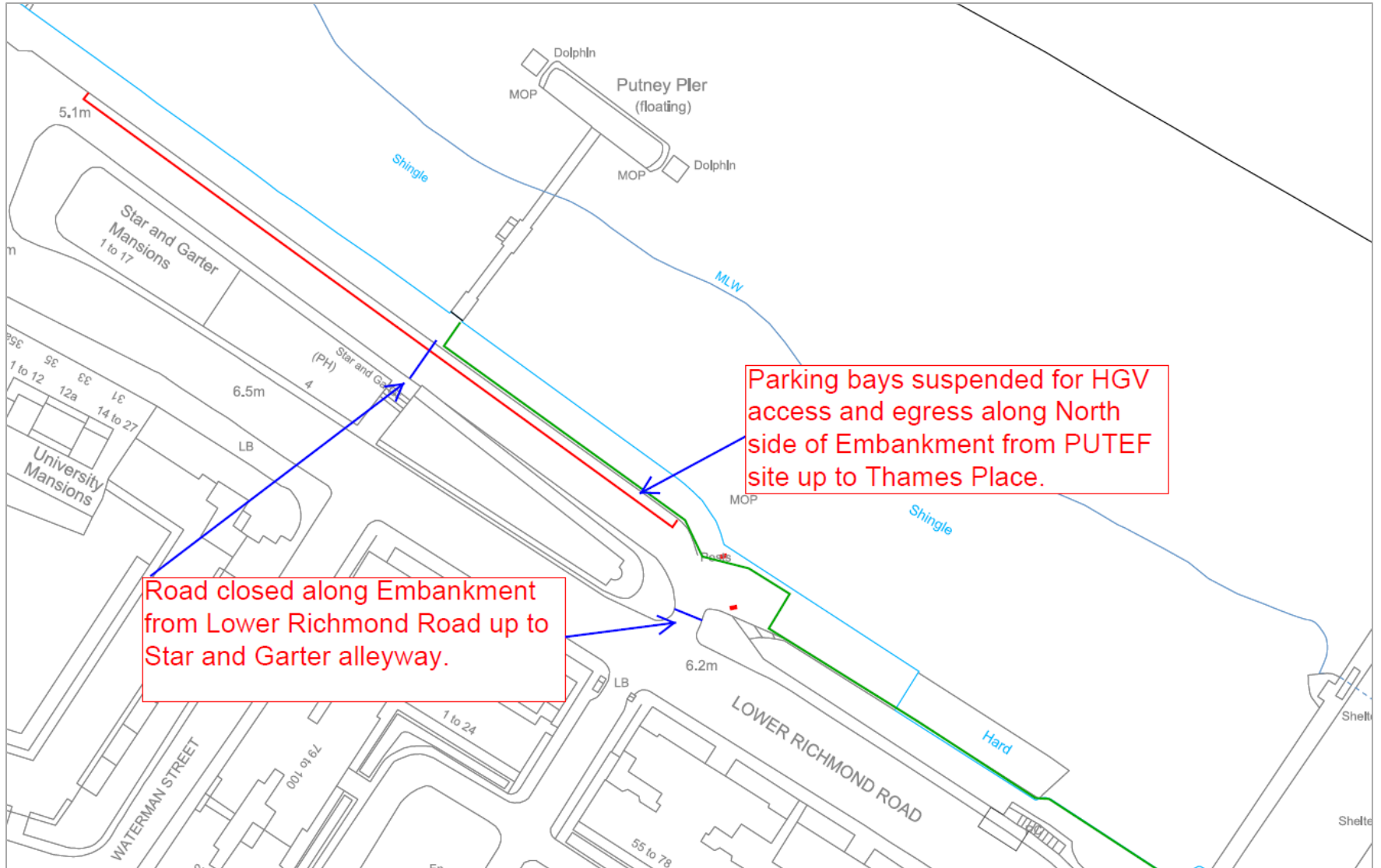


Putney's legacy promontory



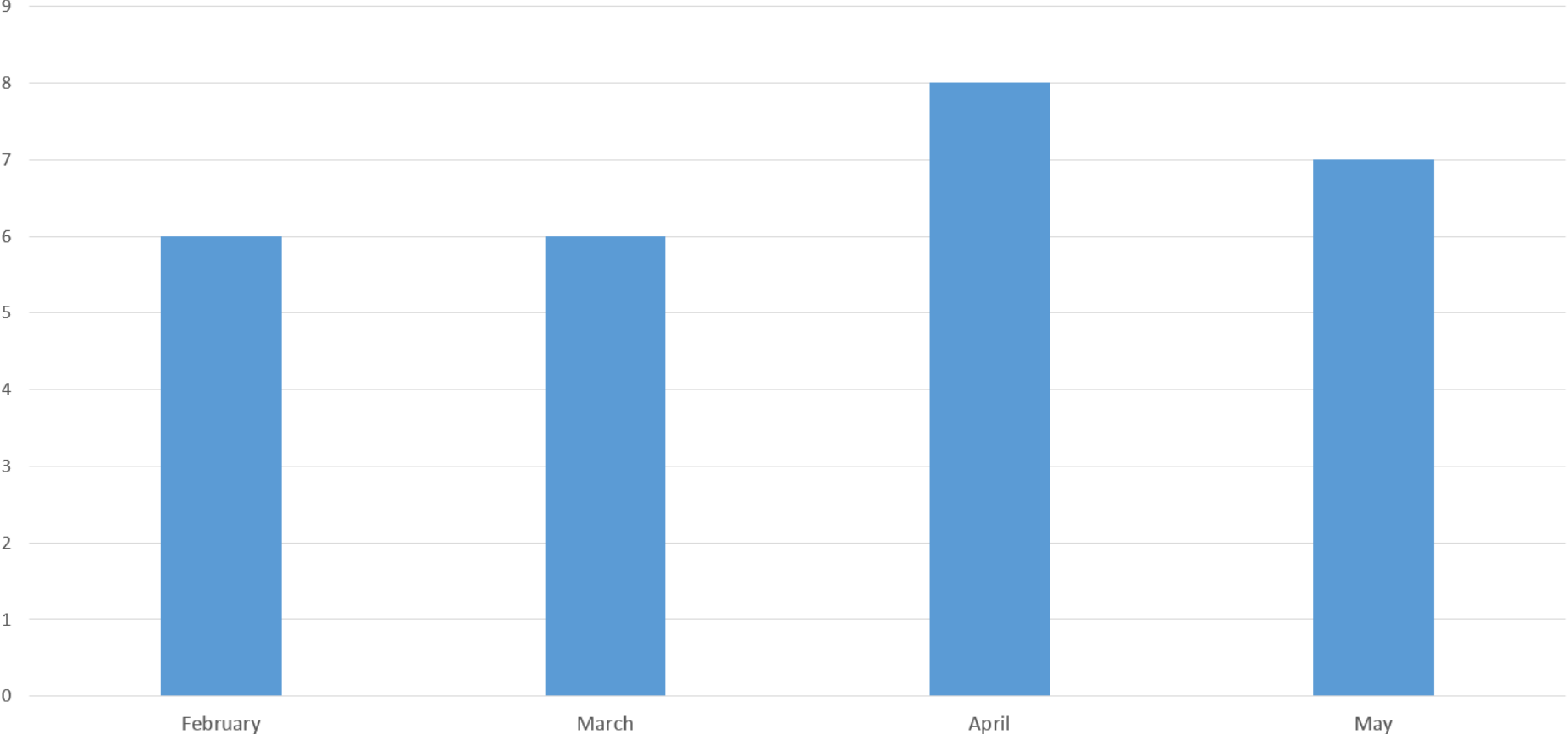
And looking forward...

Occasional road closures



Putney Embankment Foreshore Vehicle movements

Predicted Heavy Goods Vehicles (HGVs) arriving on site (Monthly Daily Average)
February - May 2019



Putney Embankment Foreshore

More by river

- Change to overall works method, using larger barges, has resulted in fewer barge movements on the river
- Each barge movement equates to approximately 40 HGV's removed from the local road network
- Since October we have had 10 barges arrive at Putney Embankment Foreshore, keeping approximately 400 lorries off the road



Putney Embankment Foreshore



THE
BOAT RACE
OXFORD  CAMBRIDGE



Putney Embankment Foreshore

Questions?



HOW TO MAKE A CLAIM IF YOU ARE AFFECTED BY TIDEWAY'S WORK

Who do I go to for advice?

- Independent Advisory Service (IAS) Helpline for independent advice: **0800 917 8845** or info@tidewayias.co.uk
- Tideway's Mitigation and Compensation Lead, **Louise Walsh**, for personal assistance and advice: via Tideway Helpdesk **08000 30 80 80** or helpdesk@tideway.london or direct **07971 077165** or louise.walsh@tideway.london

How do I submit my claim?

- Louise can submit your claim to the Independent Compensation Panel (ICP) on your behalf, or
- You can submit your claim direct to the ICP: admin@tidewayicp.london
- The IAS can send you a claim form, or you can download a claim form from the Tideway website: www.tideway.london/help-advice/compensation-information/Independent-Compensation-Panel

Community Engagement

Patrick Kelly

Helpdesk



Call: 08000 30 80 80
Email: helpdesk@tideway.london
Write to: Freepost TIDEWAY



Helpdesk have received 2 complaints linked to our schemes at Putney Embankment Foreshore

BMB Tideway Community Investment



BMB Tideway Community Investment



BMB Tideway Legacy



BMB Tideway West Legacy

- Volunteered 3000+ hours last year for local causes
- STEM volunteering – 1600+ hours at schools including Southfields Academy and Ark Putney Academy in Wandsworth
- 27 successful work placements over the summer
- 23 apprentices working across the seven sites
- Almost 1 in 50 employees is an ex-offender
- BMB collaborate with Women In Construction to push a more gender diverse workforce
- Almost 20% of employees live on local boroughs



Women in Engineering

Click the link below to find out more about Women in Construction:

<https://vimeo.com/302048222>

BMB Pink Hard Hats

breast
cancer
care



£4000 raised for Breast Cancer Care



BMB Pink Hard Hats



Questions