



Tideway

**King Edward Memorial Park Foreshore
Community Liaison Working Group
6 February 2019**

Staff

Tideway

- **Jeff Alchin** **Project Manager Tideway**
- **Allen Summerskill** **Stakeholder & Consents Tideway**
- **Rebecca Major** **Communications Tideway**

CVB

- **Neil Grosset** **Project Manager**
- **June Saunders** **Community Relations Officer**

CONTENTS

Environmental update (noise and air quality)

Legacy and Community

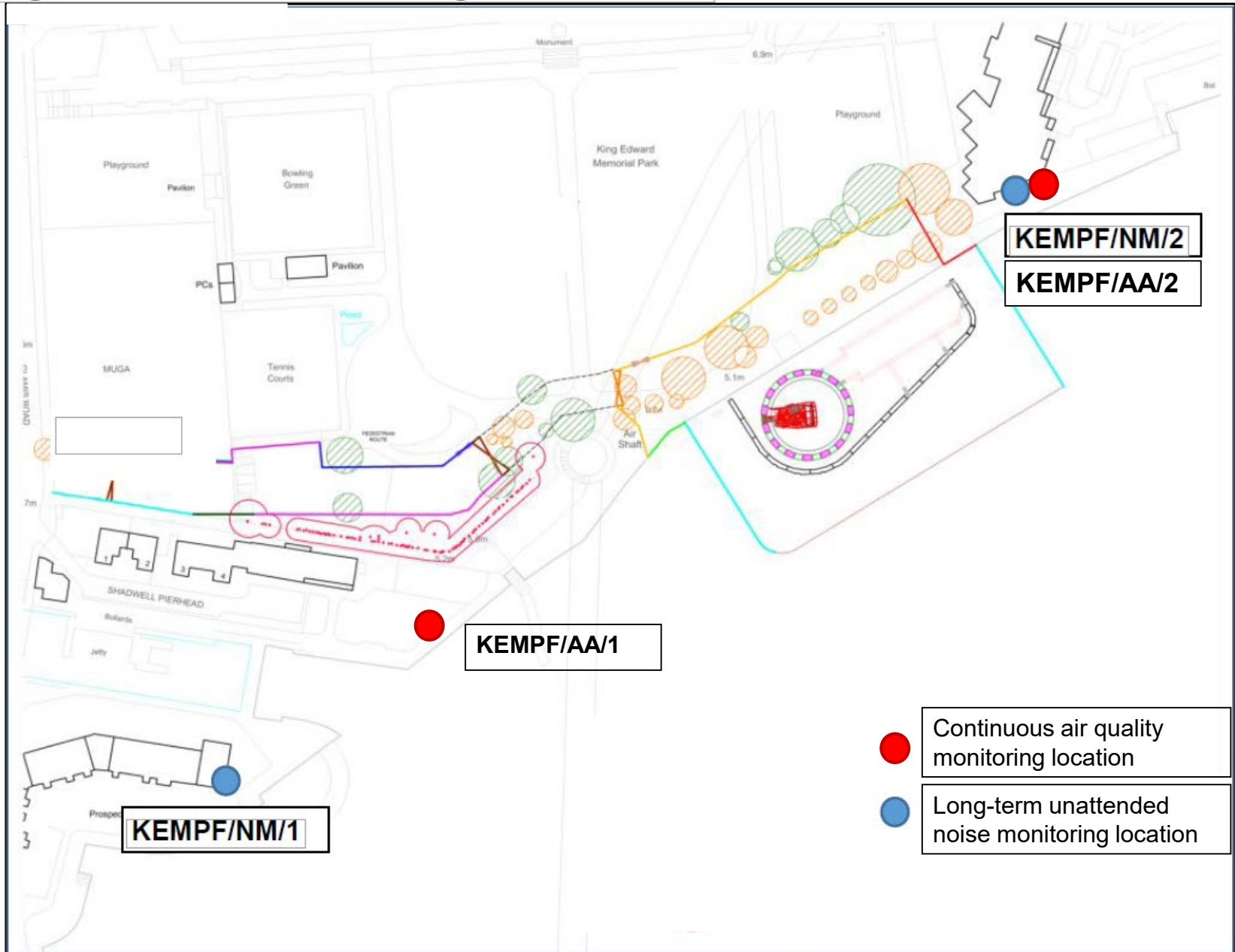
Progress report

Upcoming works

Environmental

Noise & Air Quality

No exceedances - Sept, Oct, Nov, Dec 2018 & Jan 2019



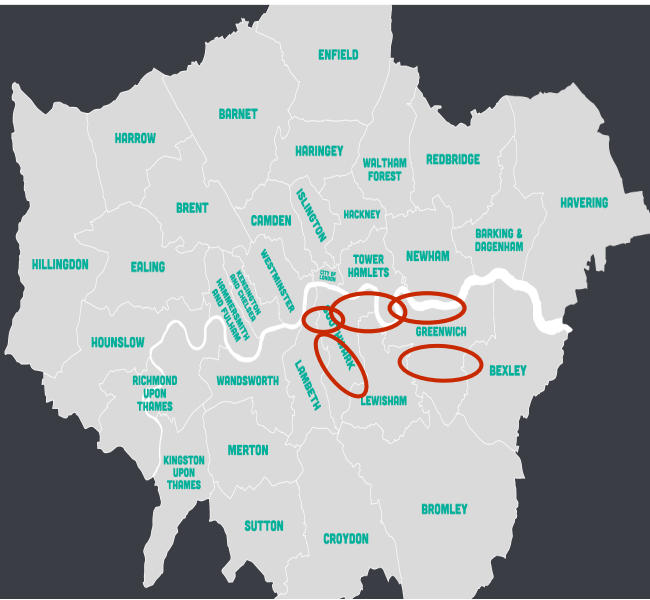
Legacy and Community Relations

TIDEWAY EAST COMMUNITY INVESTMENT & STEM

October – December 2018

LONDON
BOROUGHS
WE'VE
SUPPORTED

5



NUMBER OF HOURS VOLUNTEERED

476



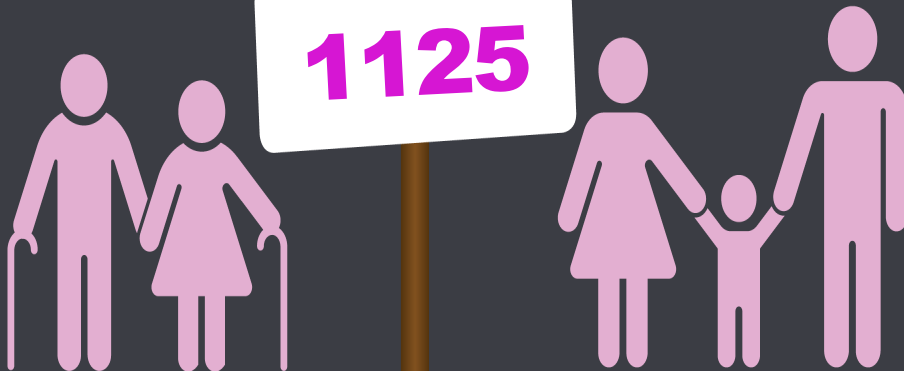
NUMBER OF PEOPLE VOLUNTEERED

159



NUMBER OF PEOPLE WE SUPPORTED

1125



ORGANISATIONS WE'VE HELPED

22



Royal Guest

The Princess Royal visited Abbey Mills Pumping Station, known as the ‘Cathedral of Sewage’, to learn about the Victorian sewers and Tideway’s plan to vastly reduce the amount of untreated sewage which flows into the River Thames.



Above: Princess Anne meeting Tideway staff





- 5 events
- 360 bags of rubbish
- 124 volunteers
- 300 volunteer hrs



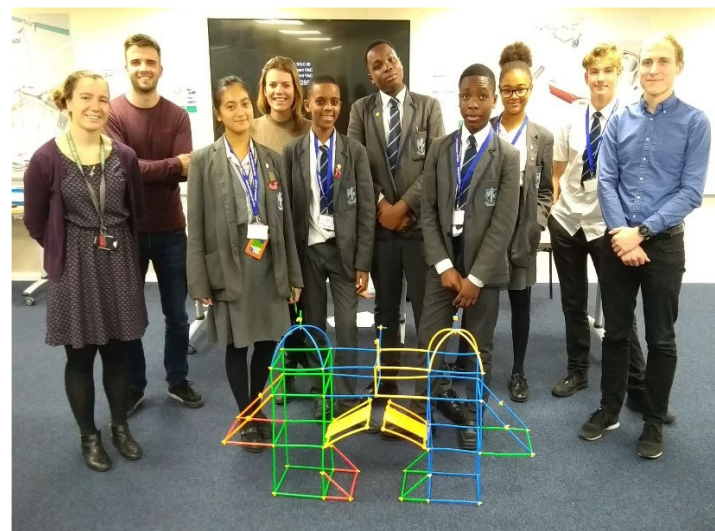
A bag of Smiths salted peanuts found with an expiry date of January 1984

1st Event of 2019 planned for King Edward Memorial Park Foreshore

BREAKING BARRIERS



2018



12-week programme led by staff volunteers in partnership with London Youth Rowing



- **2** programmes
- **30** students
- **2** Southwark schools
- **20** staff volunteers

Leadership

Problem solving

Time management

Goal setting

Physical skills

Team building

Communication skills

Mentoring

Personal development

Presentation skills

Decision making

Self discipline

Programme continues in 2019

Familiarisation visit by Local Fire Officers



**KING EDWARD
MEMORIAL PARK
FORESHORE**

January 2019

National Tree Week November 2018

- CVB Tideway have teamed up with community voluntary group the Deptford Folk to support their challenge to plant 200 trees in celebration of the first publication of John Evelyn's diaries 200 hundred years ago.
- We have funded 20 of the trees and will be working with the community group, in collaboration with LB Lewisham with the planting and educating local schoolchildren and groups about the importance of trees.
- Twenty trees were planted with the help of the local community in upper and lower Pepys park to mark National Tree Week in November.
- Four of these trees will be counted towards the Tideway legacy of planting 2 for 1 replacement concept for the project, with the rest funded by CVB Tideway to be planted early next year.



- John Evelyn, was a 17th century diarist who has strong links with Deptford and lived in at Sayes Court Manor, which has long since been demolished, along with his famous garden. He wrote about trees, air quality, urban design, gardening and horticulture.



Progress report

Programme

King Edward Memorial Park Foreshore Programme Overview

PROGRAMME OVERVIEW 2018-2021	2017				2018				2019				2020				2021				2022				2023			
	Q1	Q2	Q3	Q4	Q1	Q2	Q3	Q4	Q1	Q2	Q3	Q4	Q1	Q2	Q3	Q4	Q1	Q2	Q3	Q4	Q1	Q2	Q3	Q4	Q1	Q2	Q3	Q4
Install cofferdam			completed																									
Relieving platform					completed		Building Slab is tidally affected																					
Additional Sheet Piles							Impact and Vibro piling																					
Prepare cofferdam platform & DSM																												
Diaphragm Walls																												
Excavate shaft																												
Build Shaft																												
Hydraulic Structures																												
Connect into Sewer																												
Remove cofferdam																												
Moving parts and tests																												
Landscaping																												

Standard Working Hours
 08:00 to 18:00, Monday to Friday.

Extended Working Hours
 05:00 to 08:00 Monday to Friday
 18:00 to 22:00 Monday to Friday

This work or movement of marine plant will occur only when necessary due to tidal restrictions or long concrete pours

Mobilisation and Demobilisation Hours

Up to one hour before and after our standard hours and 30 minutes after extended hours working

07:00 to 08:00 and 18:00 to 19:00 Monday to Friday or

22:00-22:30 Monday to Friday

Maintenance periods

On occasions due to health & safety requirements we will also carry out maintenance between

08:00 to 17:00 Saturdays and 10:00 to 16:00 Sundays

Programme Delay

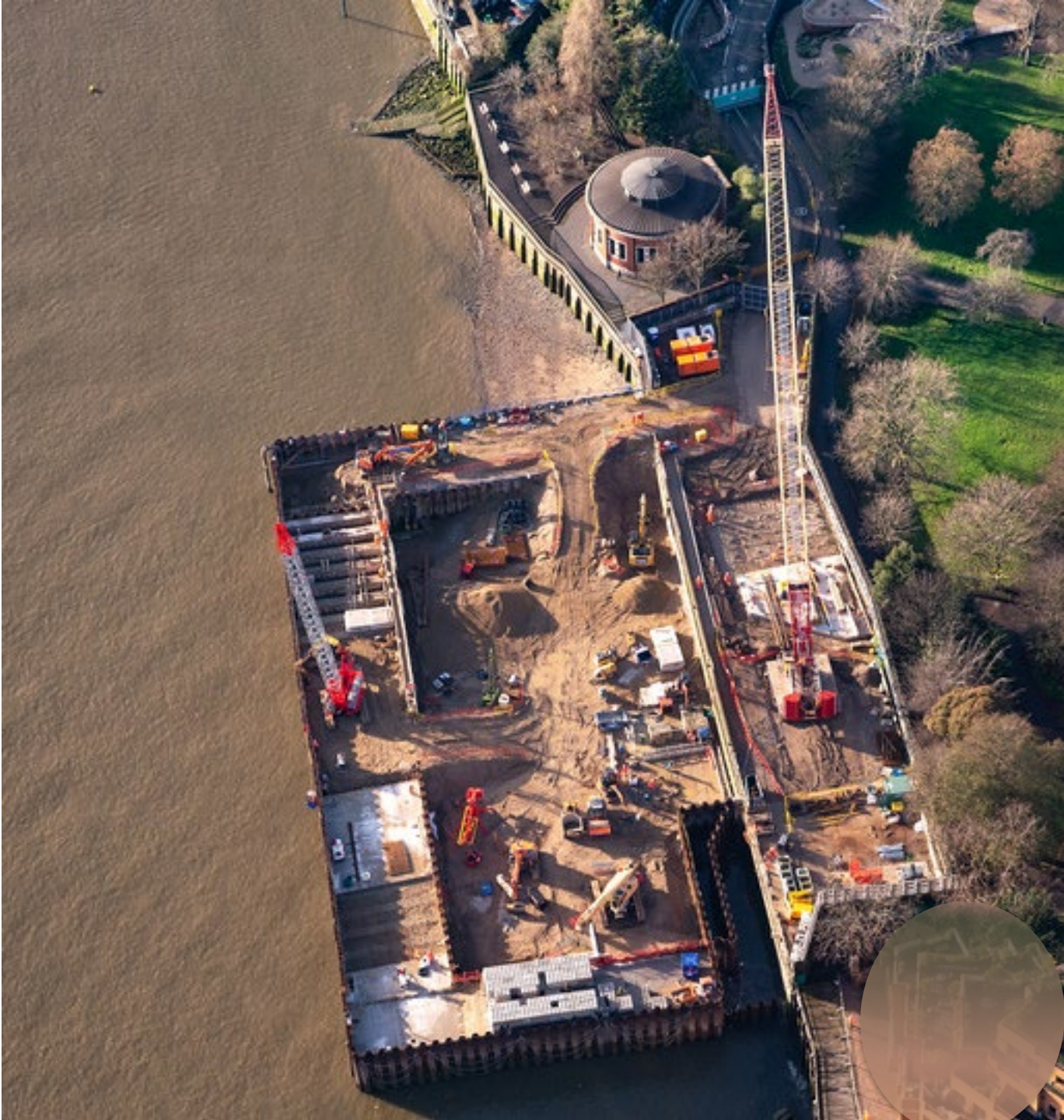
Due to additional work required within the Cofferdam the programme has been delayed

Archaeological work has been brought forward to allow the investigation to take place prior to additional soil mixing work to be completed

Landscaping plan submissions will now be submitted to LB Tower Hamlets in late 2019

**Aerial View of
Cofferdam**

**December
2018**



Further piles installed to support Silos required for soil mixing



**KING EDWARD
MEMORIAL PARK
FORESHORE**

NOVEMBER 2018

Backfilling of the cofferdam



January 2019

Bentonite Silos in place



Muck Bin slab cast on 3 January

Delivery of L-Blocks commence Jan by barge



Completed works

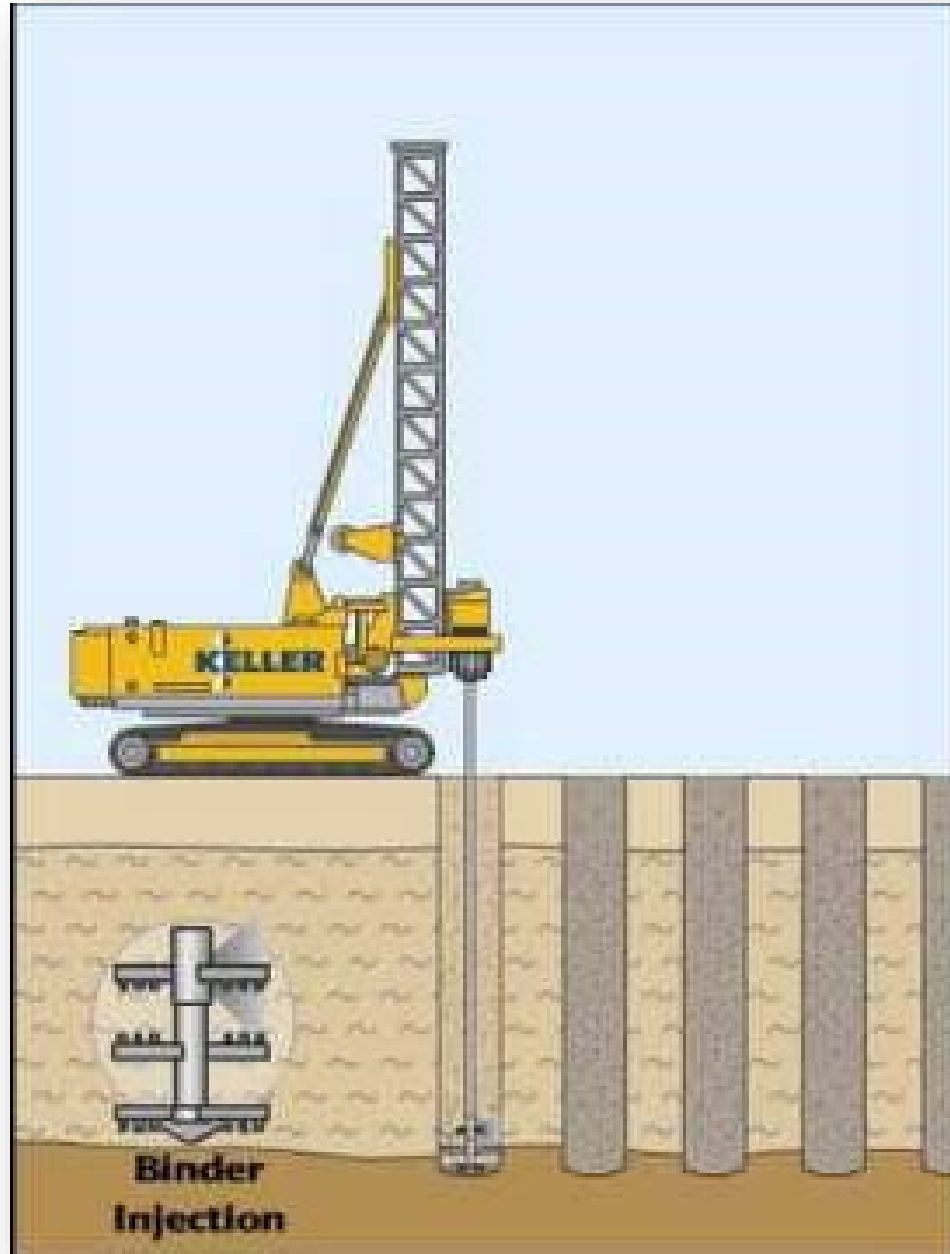
- **Cofferdam strengthening works:**
 - **Concrete piles in cofferdam finished in October 2018**
 - **Concrete beams tying the piles together completed in November 2018**
- **Concrete piles on landside completed**
- **A concrete slab built to support silos delivered in November for ground improvement works to the main area of the cofferdam**
- **Concrete slab built within the North East Storm Relief Sewer diversion. These works are tidally affected and are almost complete**
- **Muck Bin base slab completed**

Upcoming work

Upcoming works

- **Hoarding Art in enclosed play area being installed 6 - 8 Feb**
- **Archaeological Investigation for 4 to 6 weeks**
- **Backfilling of the Cofferdam continues until end of February**
- **Ground improvement works in January for approximately 4 to 6 months**
 - **This will be deep soil mixing: a machine is used to bore down into the ground and mix grout to improve the ground characteristics**

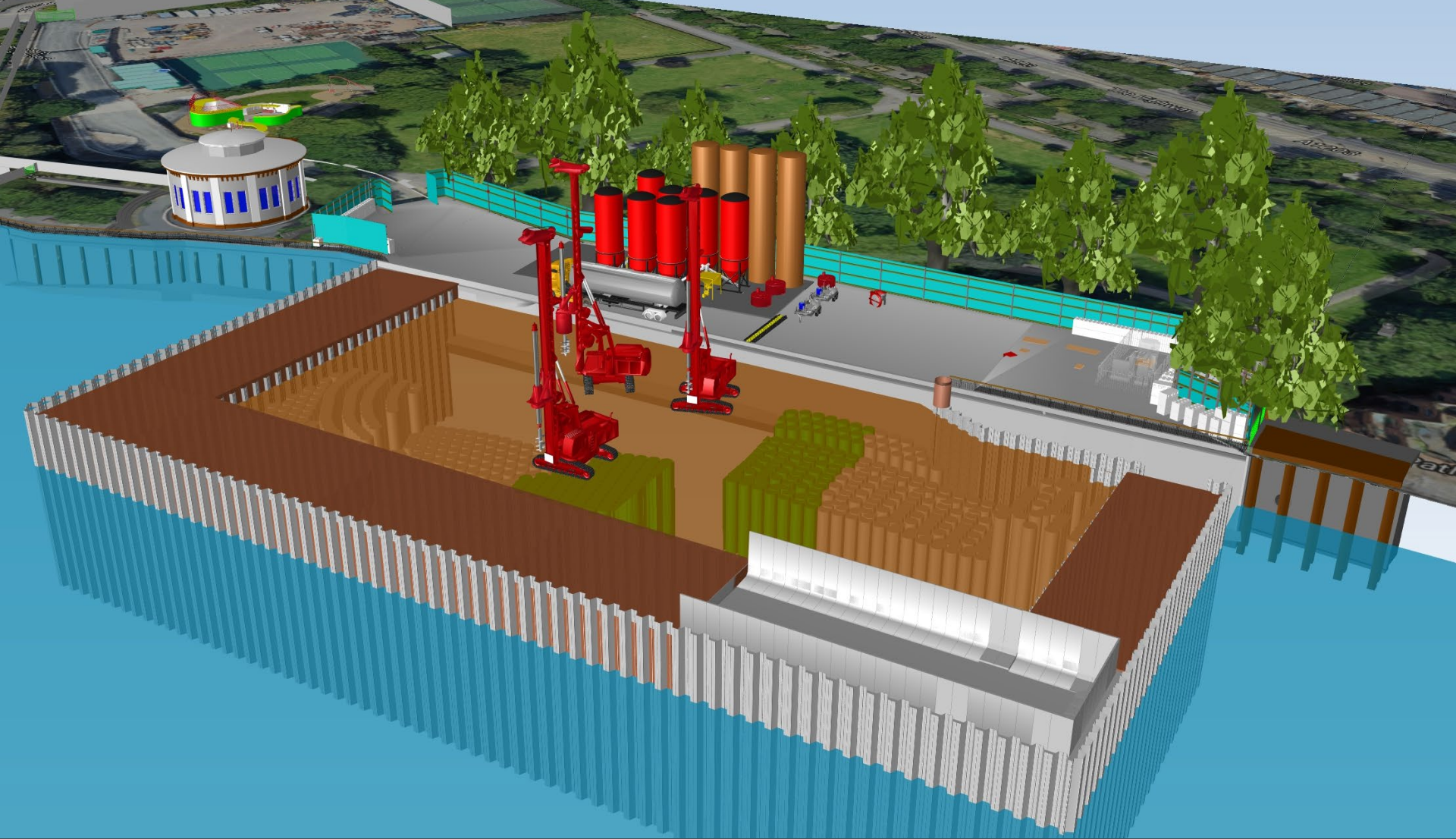
Soil Mixing – Start January for 6 months



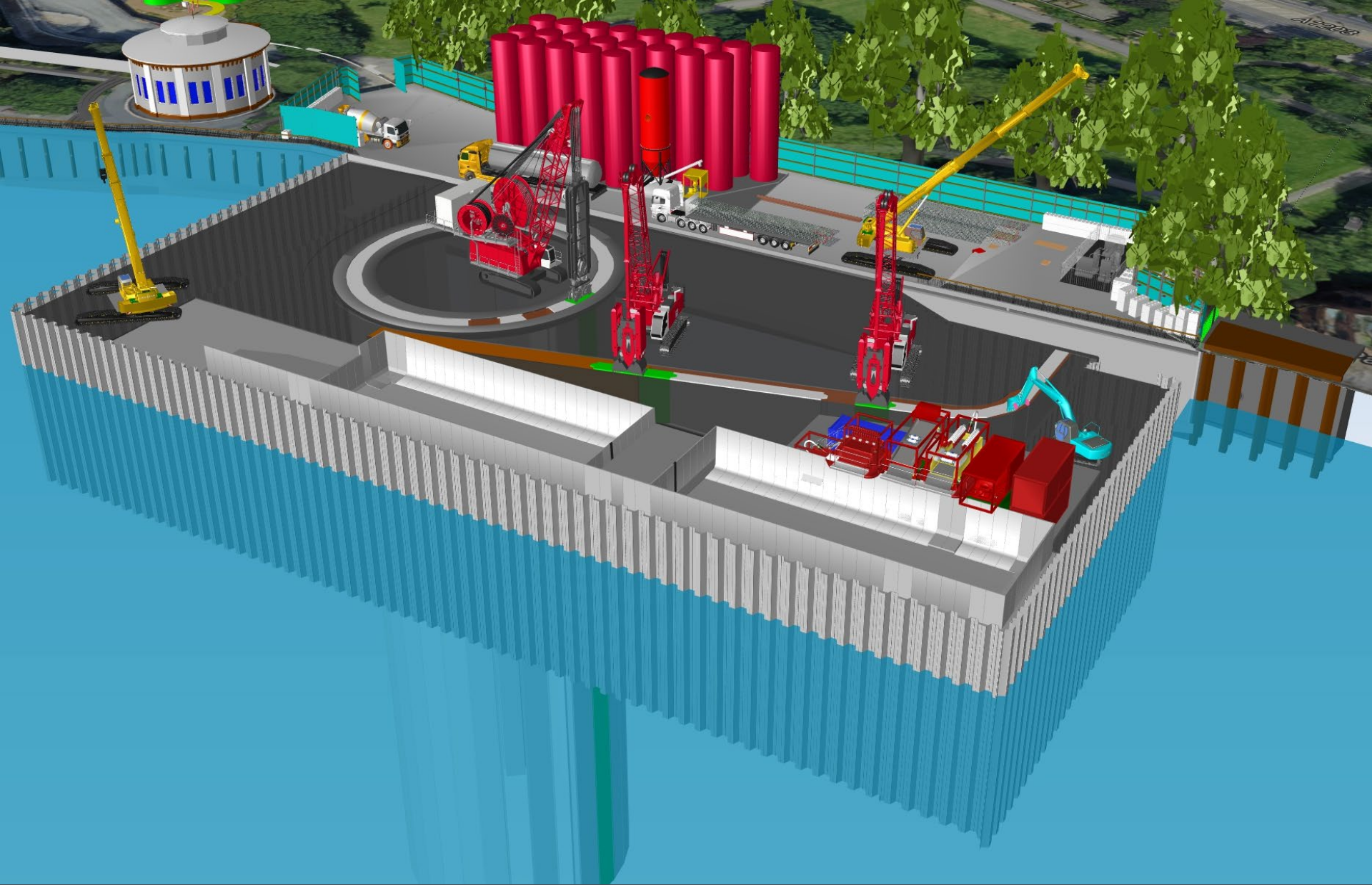
Archaeological Excavation



This skeleton was excavated during investigations at a different Tideway site in the east. The skeleton was found to be approximately 300 years old and is known as ‘the booted man’



Soil Mixing Feb – July 2019



Diaphragm Walling - Begins September 2019

Questions?

**If you have any questions or enquiries
please contact the Tideway Helpdesk on:**

Telephone: 08000 308080

Email: Helpdesk@Tideway.London

THANK YOU

**King Edward Memorial Park Foreshore
Community Liaison Working Group
6 February 2019**

Any questions

please contact the Tideway Helpdesk on:

Telephone: 08000 308080

Email: Helpdesk@Tideway.London