



Tideway

Deptford Church Street & Greenwich Pumping Station

Community Liaison Working Group

Tuesday 7 May 2019

Tideway

- Andy Sefton, Senior Project Manager Greenwich
- Gareth Howells, Project Manager Greenwich
- Anil Dhillon, Project Manager Deptford

CVB – main works contractor

- Sophie Lambert, Deptford Project Manager
- Adam Flory, Greenwich Site Agent
- Sophie Hart, Environmental Advisor
- Charley Whitelock, Community Relations Officer

CONTENTS

Deptford Update

- Works update
- Looking ahead
- Noise and vibration

Greenwich Update

- Works update
- Looking ahead
- Noise and vibration

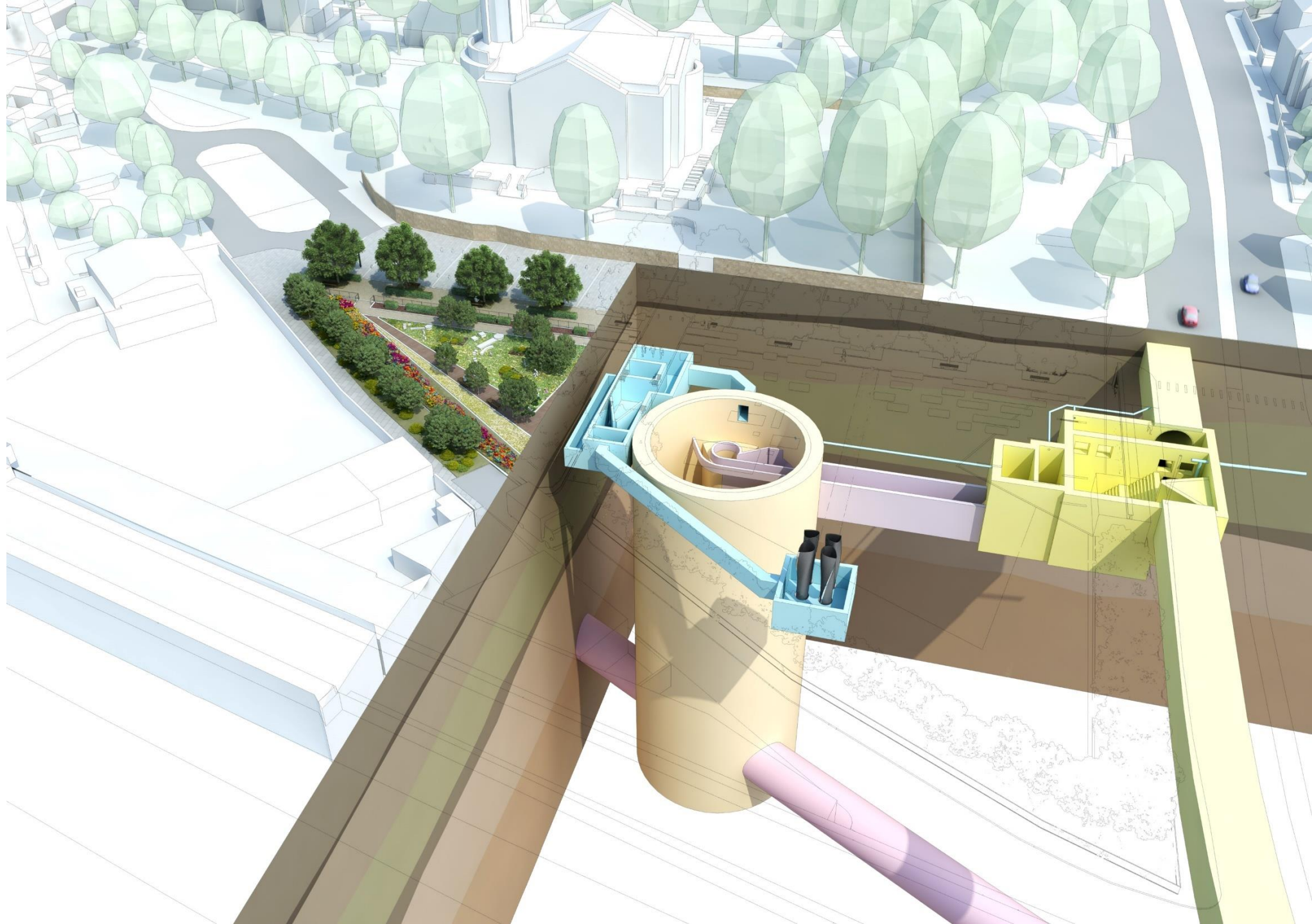
Legacy

DEPTFORD CHURCH STREET

April 2019



**What
we're
building**



Deptford works update

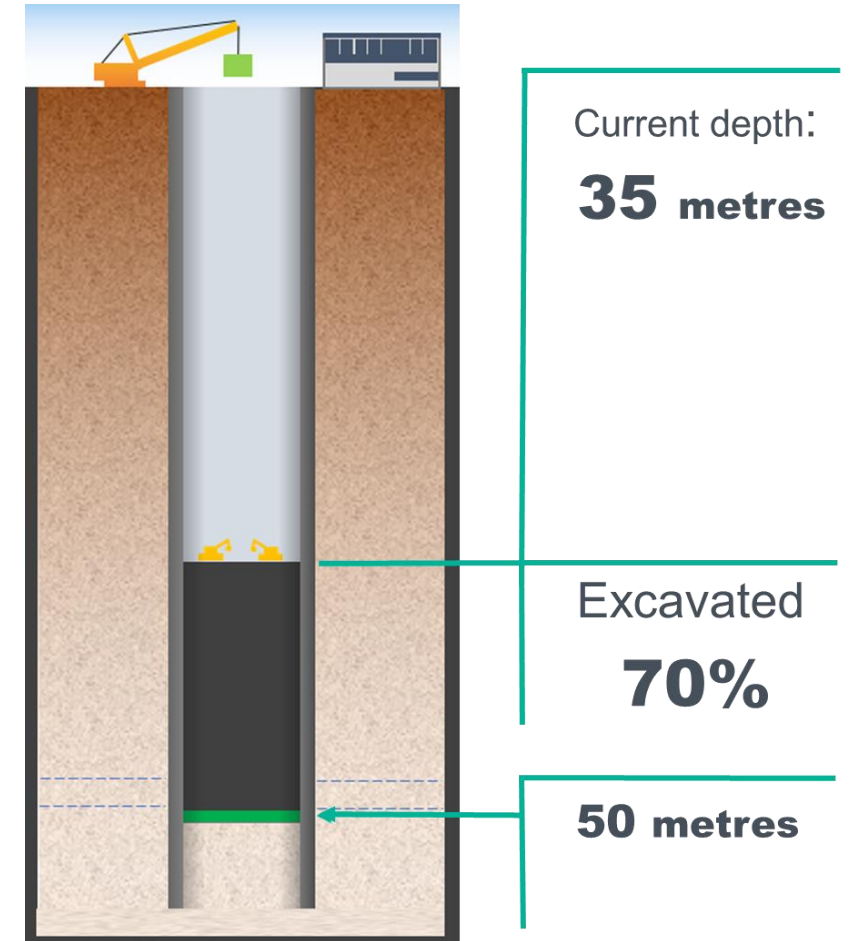
Shaft

- We are 35 metres deep with shaft excavation, which consists of removing spoil using excavators until we get to a depth of 50 metres

Interception Chamber

- We continue to construct the capping beam on the interception chamber, which is a reinforced concrete structure forming its new perimeter
- As we progress with sections of the capping beam, we are also excavating parts of the chamber, which will continue to a depth of 16 metres

Shaft progress



SHAFT EXCAVATION



INTERCEPTION CHAMBER



Deptford look ahead

Programme Overview	2019				
	May	June	July	Aug	Sept
Shaft excavation					
Capping beam - interception chamber					
Excavation - interception chamber					
Shaft base slab					
Shaft portals					

	Standard working hours; 08:00 - 18:00 Monday to Friday, 08:00 - 13:00 on Saturdays
	Extended working hours; up to 22:00 Monday to Friday, up to 17:00 on Saturdays

1 hour allowed before & after for mobilization/demobilisation

Looking ahead - shaft base slab pour

- Once shaft excavation is complete, we will then construct the shaft's base slab, which will be a reinforced concrete structure at the bottom of the shaft.
- This will include lifting material, such as reinforcement steel cages into the shaft, consented up until 22:00.
- Concrete for the base slab must be poured in one continuous operation to ensure a consistent quality, in order to keep out groundwater.
- Deliveries of concrete are anticipated up until 22:00 to complete the pour.
- The pour is planned one day in June.

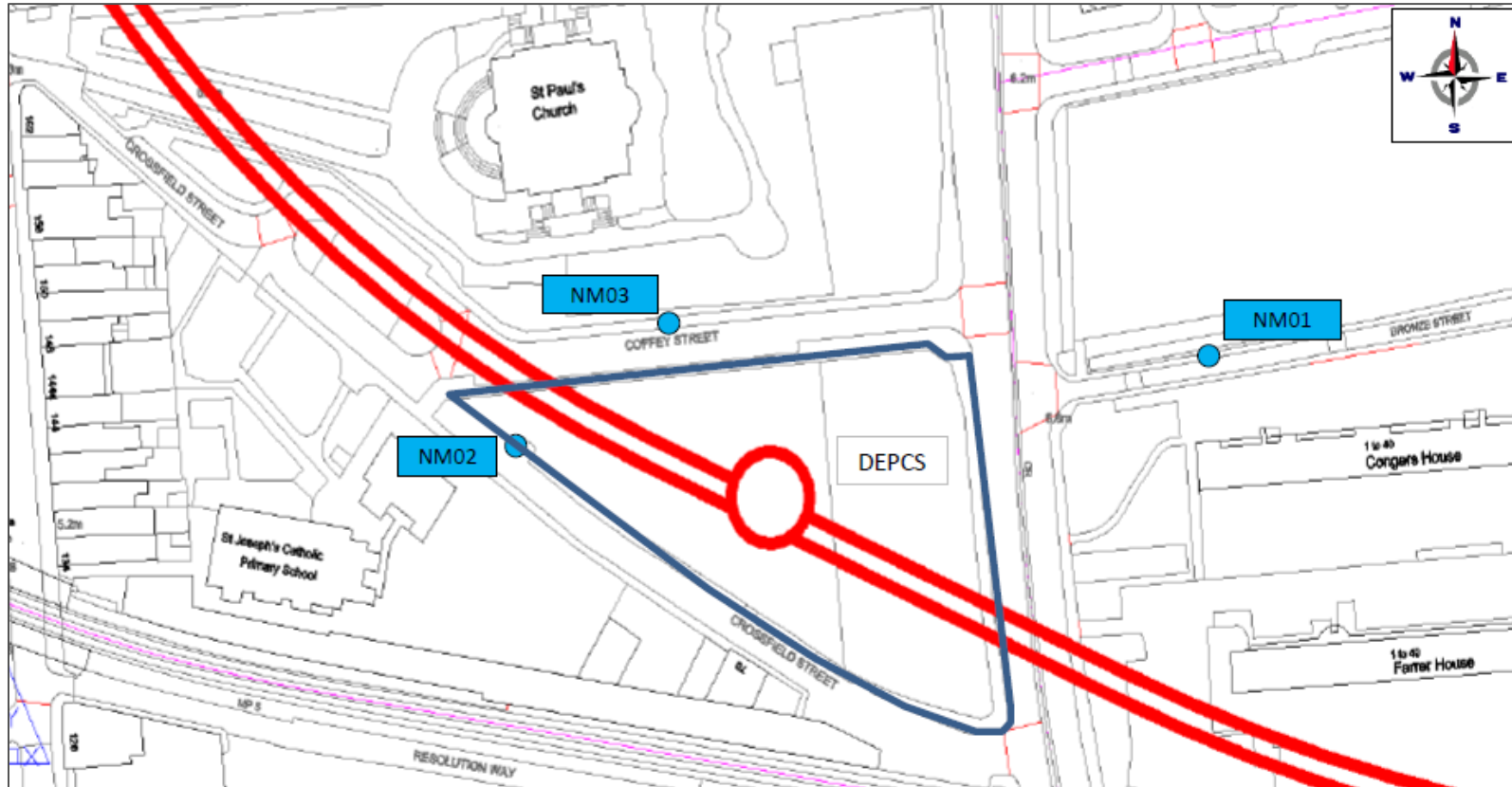
Example of a base slab before it's concreted



Construction of shaft portals



Noise from January to March 2019

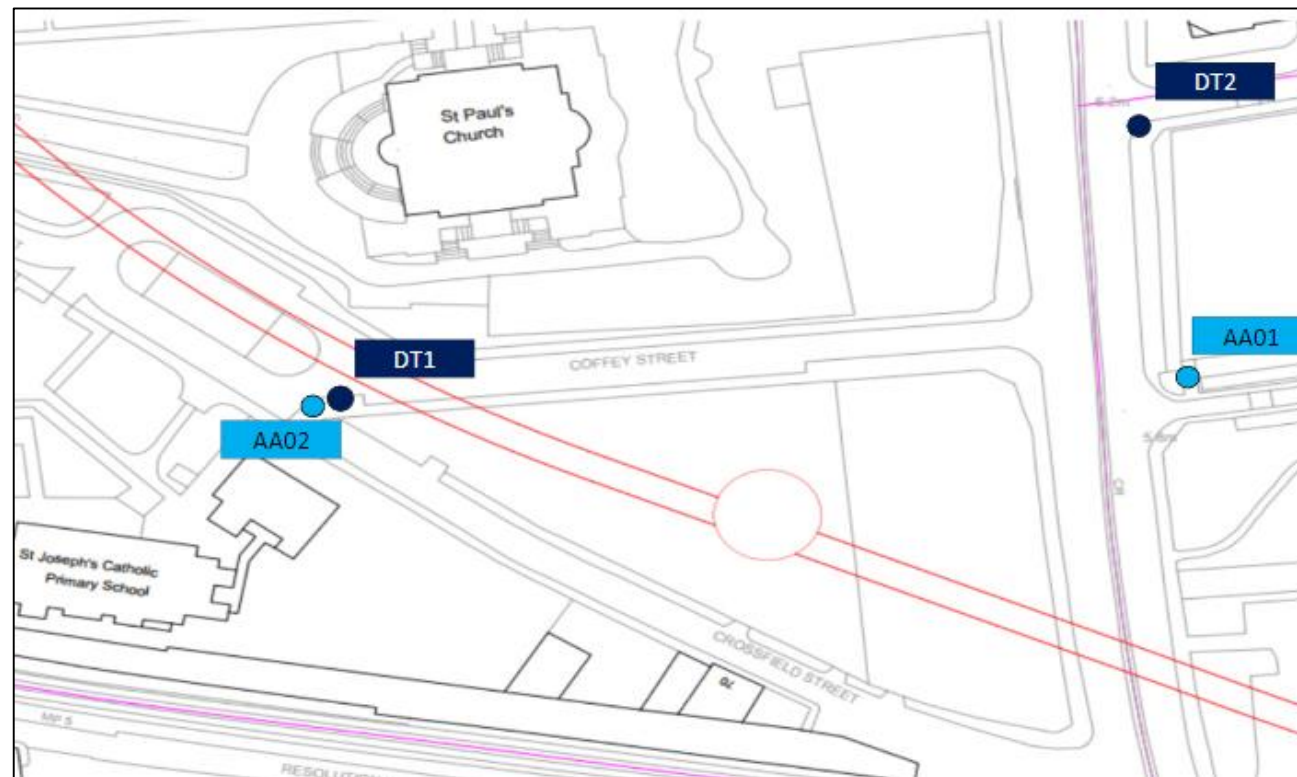


Noise monitoring locations

No Section 61 exceedances due to CVB works

Air Quality from January to March 2019

- No exceedances for the 24hour PM10 Alert
- Two Particulate Pollution Incident episodes were reported by London Air Quality Network (LAQN) during the period Jan – March:
 - Monday 21st January 2019 - moderate PM10 and PM2.5
 - Saturday 23rd until Thursday 28th of February 2019 - a very high PM10 and PM2.5
- There were no other reported moderate or high particulate episodes recorded by the LAQN.
- From 31/10/2018 to 06/03/2019 diffusion tube results were below UK long-term Air Quality Objective annual average for NO₂ µg/m³



*Air Quality monitoring locations for particulate monitoring
(PM10) (AA)
Passive NO₂ monitoring using diffusion tubes (DT)*

London Air Quality Network

The London Air Quality Network (LAQN) shows air pollution in London and south east England.

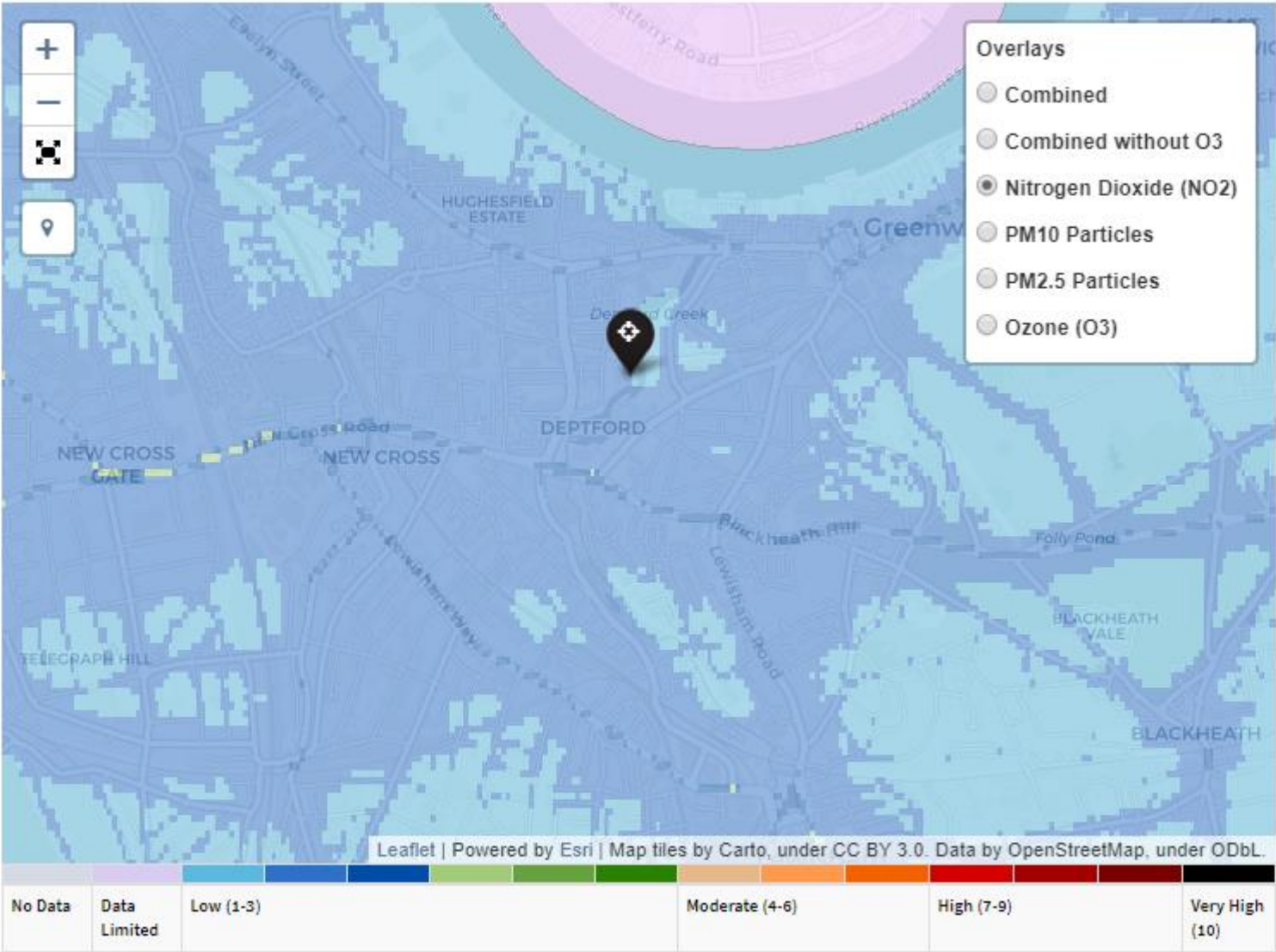
The website <https://www.londonair.org.uk> provides information for the public, for policy users, and for scientists.

The LAQN was formed in 1993 to coordinate and improve air pollution monitoring in London.

The network provides independent scientific measurements and assessment.

Air Pollution Now (Readings based on measurements from previous hour) the next slide was taken from 16:00 on 03/05/19 <https://www.londonair.org.uk/LondonAir/nowcast.aspx>

London Air Quality Network



Index at Current Location

	NO ₂	O ₃	PM10	PM2.5
Index	1	2	1	1



The local authority for this location is
Lewisham

Health Advice for Current Location (In postcode SE8 3DX)



General Population -
Enjoy your usual outdoor activities.

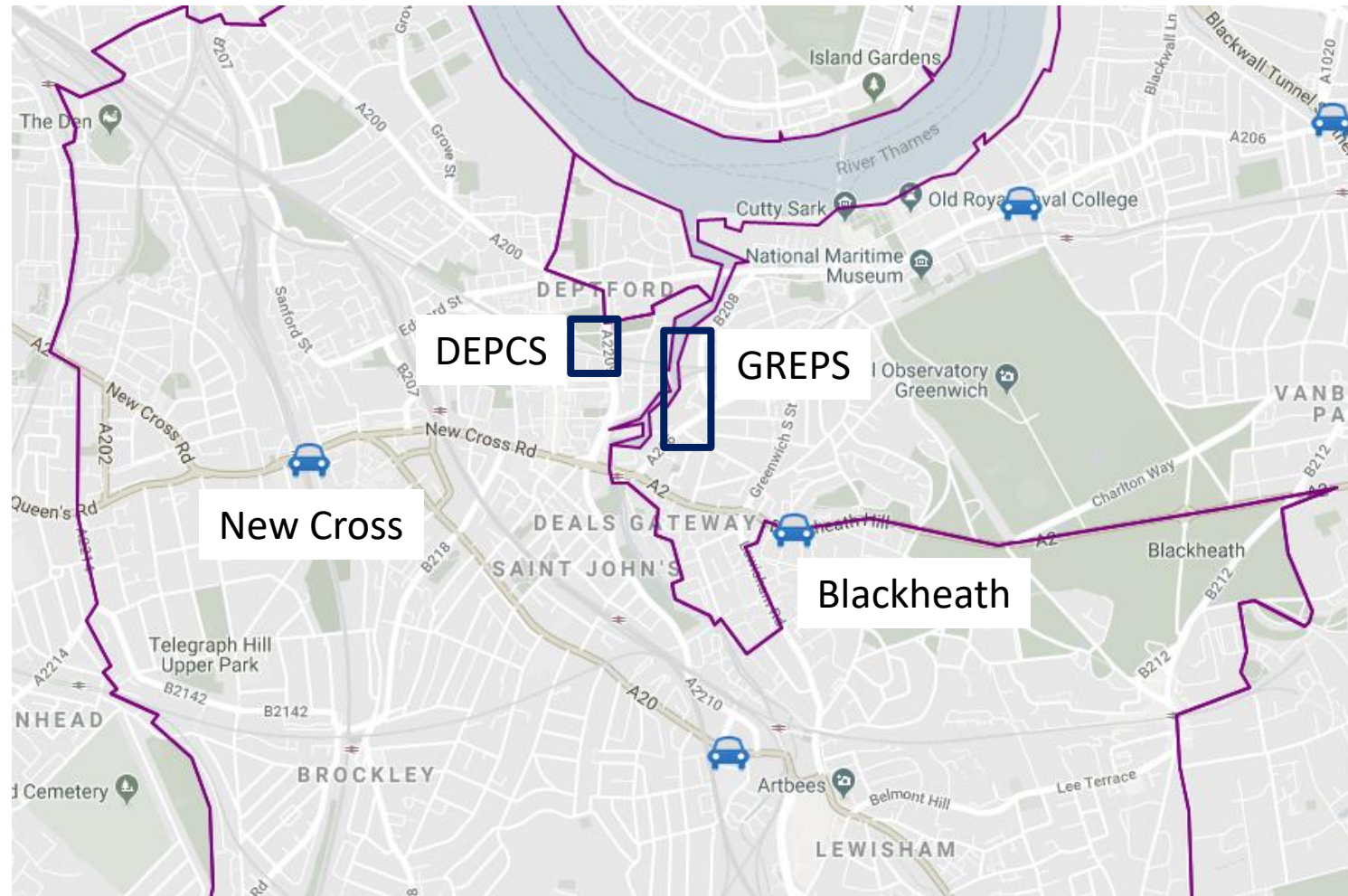


Individuals at Risk -
Enjoy your usual outdoor activities.

Health effects can be more profound if you are
sensitive to air pollution.

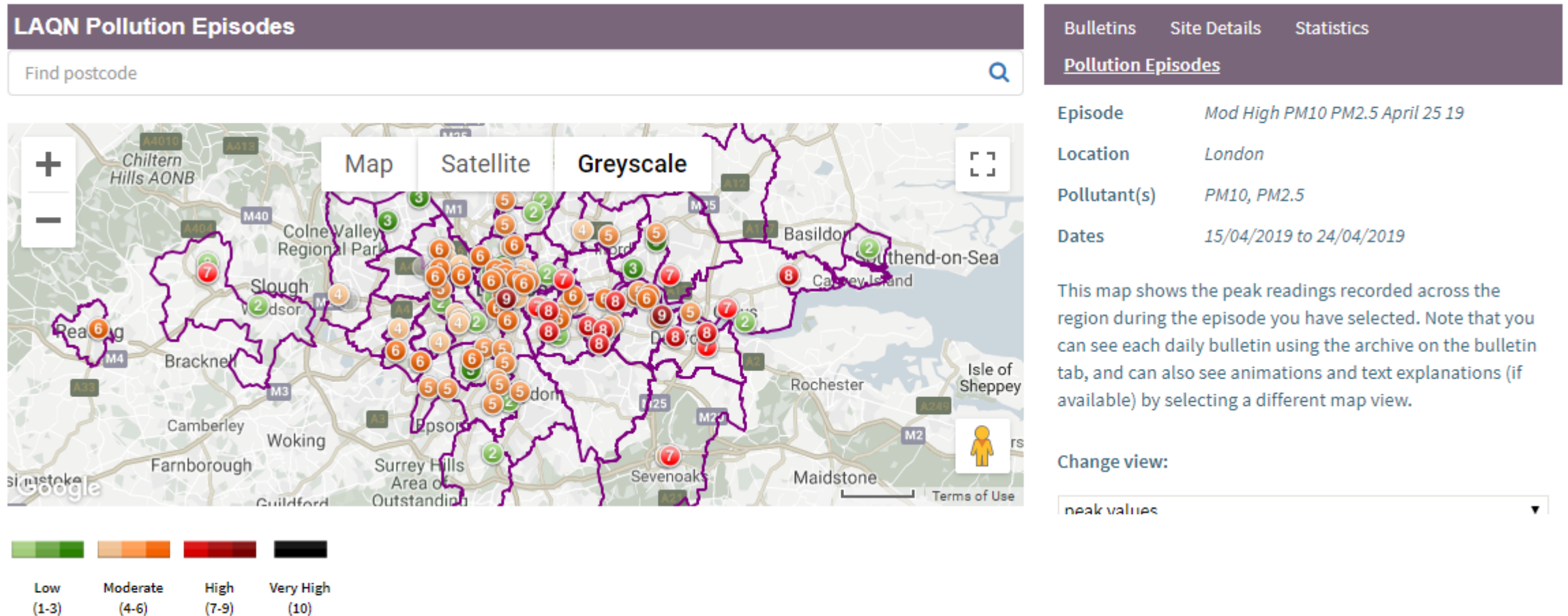
London Air Quality Network

The closest LAQN monitoring locations to GREPS and DEPCS are New Cross and Blackheath



London Air Quality Network

- Particulate Pollution Incident episodes are reported by the LAQN, most recently from the 15th – 24th April



GREENWICH PUMPING STATION

April 2019



Greenwich works update

Acoustic enclosure

- Gantry cranes are installed
- Small amount of night works left to complete the cladding and final touches, such as guttering

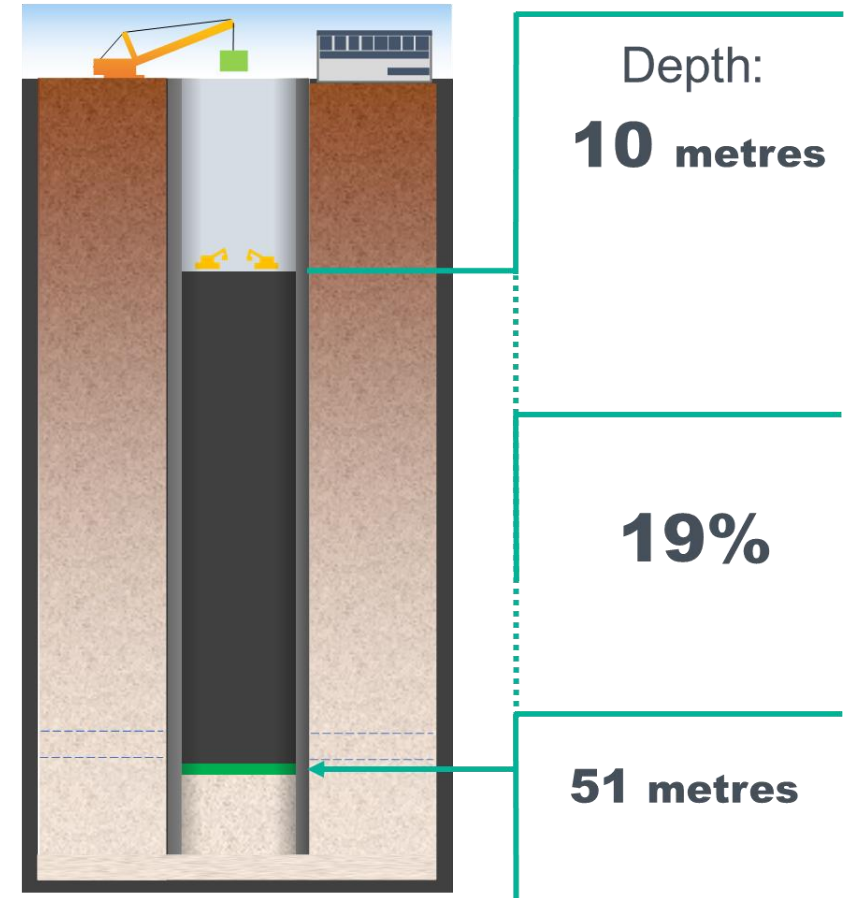
Shaft excavation

- Excavated to 10 metres deep

Phoenix Wharf

- Continue to construct the muck bins, which will store tunnel spoil before being taken away from site, either by road or by barge
- Continue to install the foundations of the slurry treatment plant (STP)
- First deliveries planned for this week for the water treatment unit

Shaft progress



ACOUSTIC ENCLOSURE

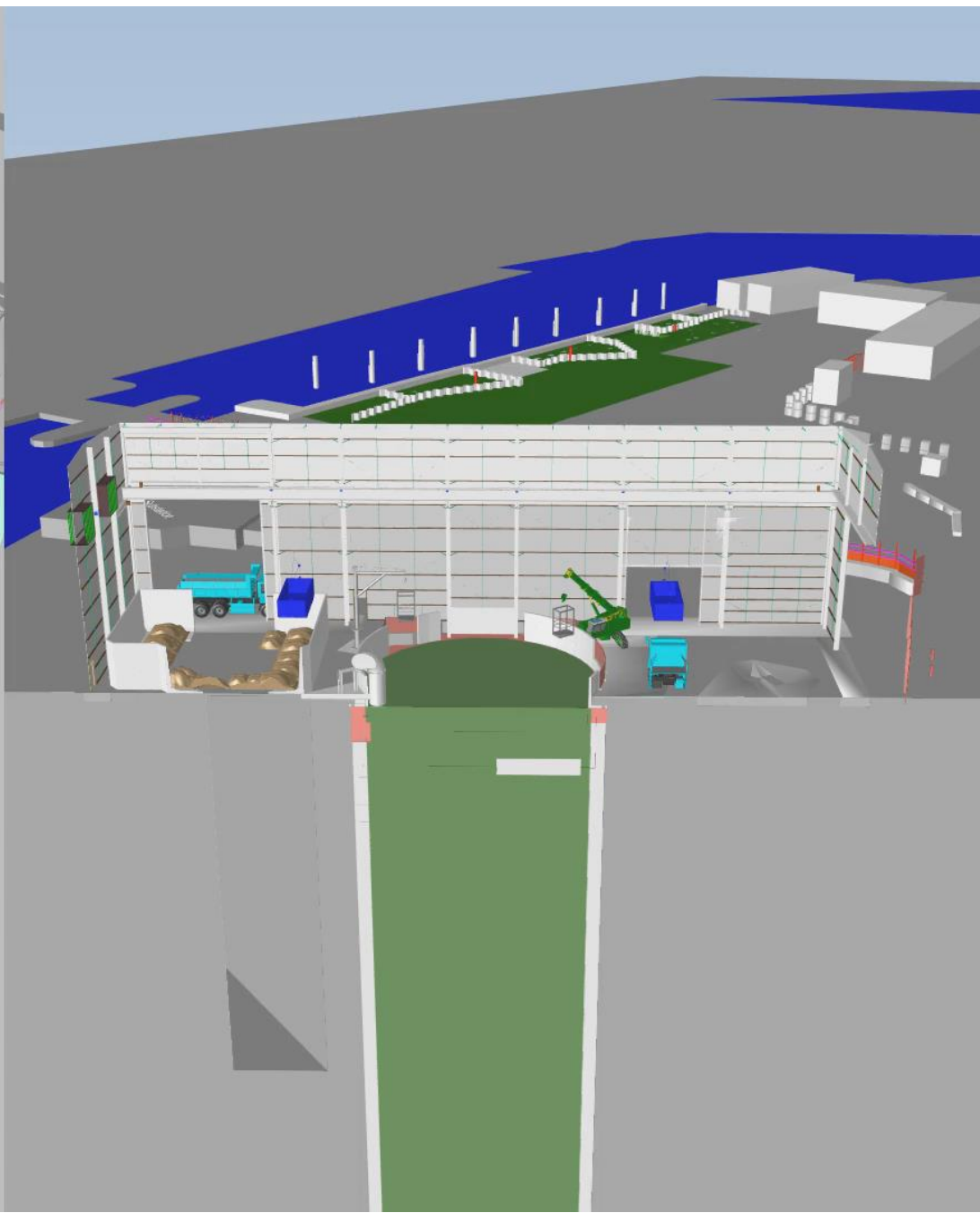
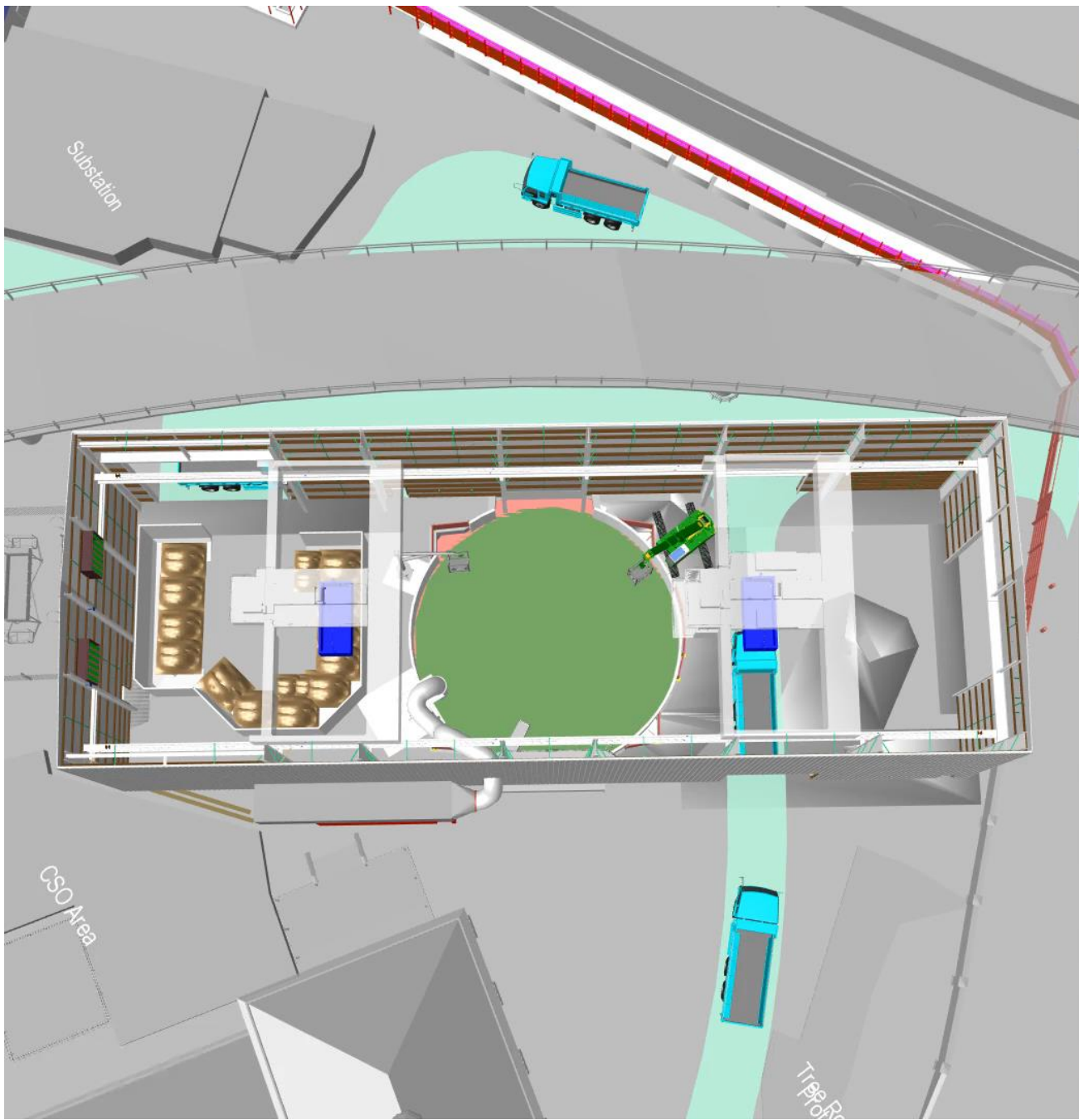


SHAFT EXCAVATION

Continuous working

- From mid-May we plan to start continuous working inside the acoustic enclosure to excavate the shaft
- 24-hours per day, Monday to Friday
- Doors closed from 18:00 (occasionally re-opened up to 22:00 for plant)
- Movement of excavated material within normal working hours





PHOENIX WHARF



Muck bins



STP foundations

Example of a slurry treatment starting being built at our Bermondsey site







Slurry treatment plant



Greenwich - next 6 months

Programme Overview	2019					
	May	June	July	Aug	Sept	Oct
Main site						
Acoustic enclosure	<div></div>					
Shaft excavation	<div></div> <div></div>	<div></div>				
Shaft base slab			<div></div>	<div></div>	<div></div>	
Tunnel adit				<div></div>		
Phoenix Wharf						
Muck bin excavation		<div></div>				
Install of slurry treatment plant		<div></div>				

	Standard working hours; 08:00 - 18:00 Monday to Friday, 08:00 - 13:00 on Saturdays
	Extended working hours; up to 22:00 Monday to Friday, up to 17:00 on Saturdays
	Night working hours; 22:00 - 07:00 Monday to Sunday
	Continuous working hours (00:00 - 00:00) Monday to Friday

1 hour allowed before & after for mobilization/demobilisation

Looking ahead - shaft base slab pour

- Same as Deptford, once shaft excavation is complete, we will then construct the shaft's base slab, but from inside the acoustic enclosure.
- The base slab is a reinforced concrete structure at the bottom of the shaft. Installing the reinforcement and shuttering will continue 24/5 inside the acoustic enclosure.
- Concrete for the base slab must be poured in one continuous operation to ensure a consistent quality, in order to keep out groundwater.
- Deliveries of concrete are anticipated up until 22:00 to complete the pour.
- This is currently planned in July

Example of a base slab before it's concreted



Next - tunnel adit

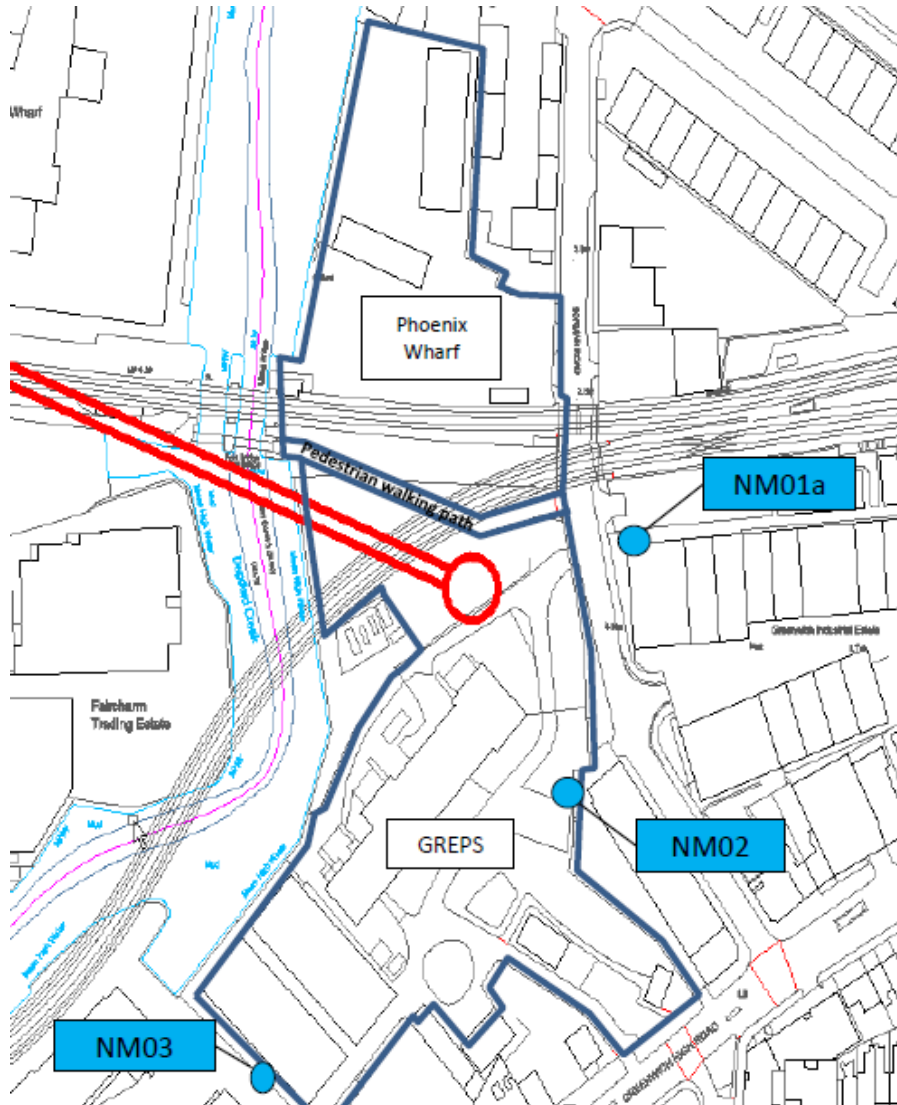
The tunnel adit will be the first 25 metres of the tunnel and where the tunnel boring machine will be launched.

It will be constructed with gradual excavation whilst lining the adit with sprayed concrete.

Example of an adit being constructed



Noise from January to March 2019 (GREPS)

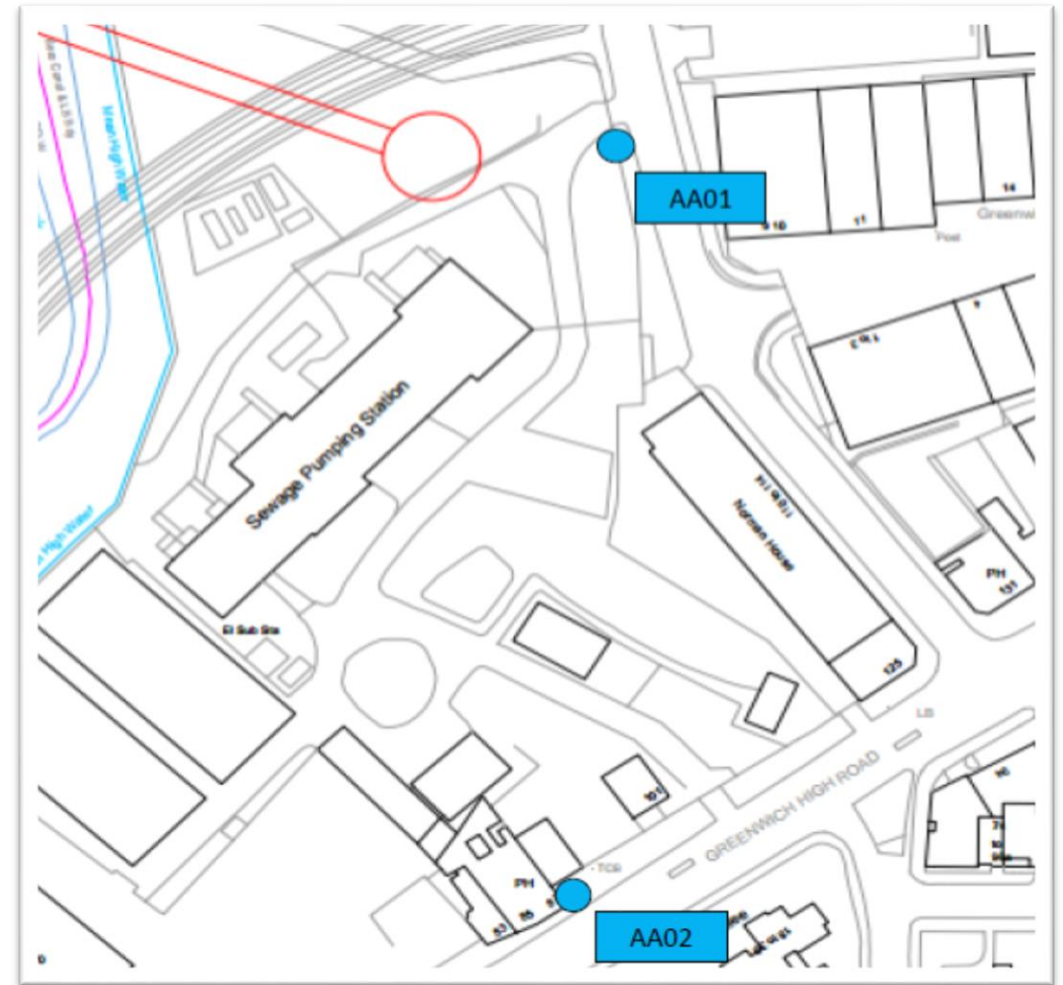


Noise monitoring locations

- No Section 61 exceedances due to CVB works
- NM02 was removed in April as the receptor 'Norman House' is due to be removed
- Now the acoustic enclosure is complete, continuous working will be undertaken for shaft excavation, base slab and adit construction.
- During the day the acoustic enclosure door will remain open to facilitate logistical movement of excavated material & plant. During the evening the enclosure door opening will be minimised and at night the door will remain closed.

Air Quality from January to March 2019 (GREPS)

- No exceedances for the 24hour PM10 Alert
- As reported for DEPCS there were two Particulate Pollution Incident episodes reported by London Air Quality Network (LAQN) during the period Jan – March
- There were no other reported moderate or high particulate episodes recorded by the LAQN for Jan, Feb, March.



Air Quality monitoring locations for particulate monitoring (PM10)

LEGACY

TREE PLANTING

*For every tree that is removed during the construction of Tideway, **2** will be re-planted within the borough*



In March , we planted 3 new trees in Deptford Park with Deptford Folk
The events are open to the public, see more on their website:

<https://www.deptfordfolk.org/evelyn-200>



We have planted **68%** of our target,
with **115** of the **168** proposed trees planted

Foreshore clean-up – Cutty Sark

- Two events so far this year
- The first along the Thames's beach near the Cutty Sark in Greenwich
- 8 bags of rubbish collected



Found this clay pipe near the opening of the Deptford Creek



The second in Wapping

- Along the King Edward Memorial Park
- Our focus was on clearing plastic, but we also collected a motorbike, bicycle and shopping trolley!





Two Southwark Brownies visits

On this day, the group spent their time thinking like engineers as they built a structure made of bamboo

Tunnelling Operative Apprenticeships

- First of its kind to be offered in the construction industry
- 59 people attended the assessment days, including from our local boroughs
- Four apprentices started with us last month, two working at Greenwich and the others at our Bermondsey site
- There is another eight working across other Tideway sites in London

We're looking for competent people to fill the below positions. CVs can be sent to careers@tideway-east.london

- Carpenters (Shuttering/ formwork)
- Banksmen
- Traffic Marshall
- Plant and Vehicle Marshall



Norman Road vehicle holding area



**If you have any questions or enquiries
please contact the Tideway Helpdesk on:**

Telephone: 08000 308080

Email: Helpdesk@Tideway.London