



Chambers Wharf Community Liaison Working Group

Monday 13 May 2019



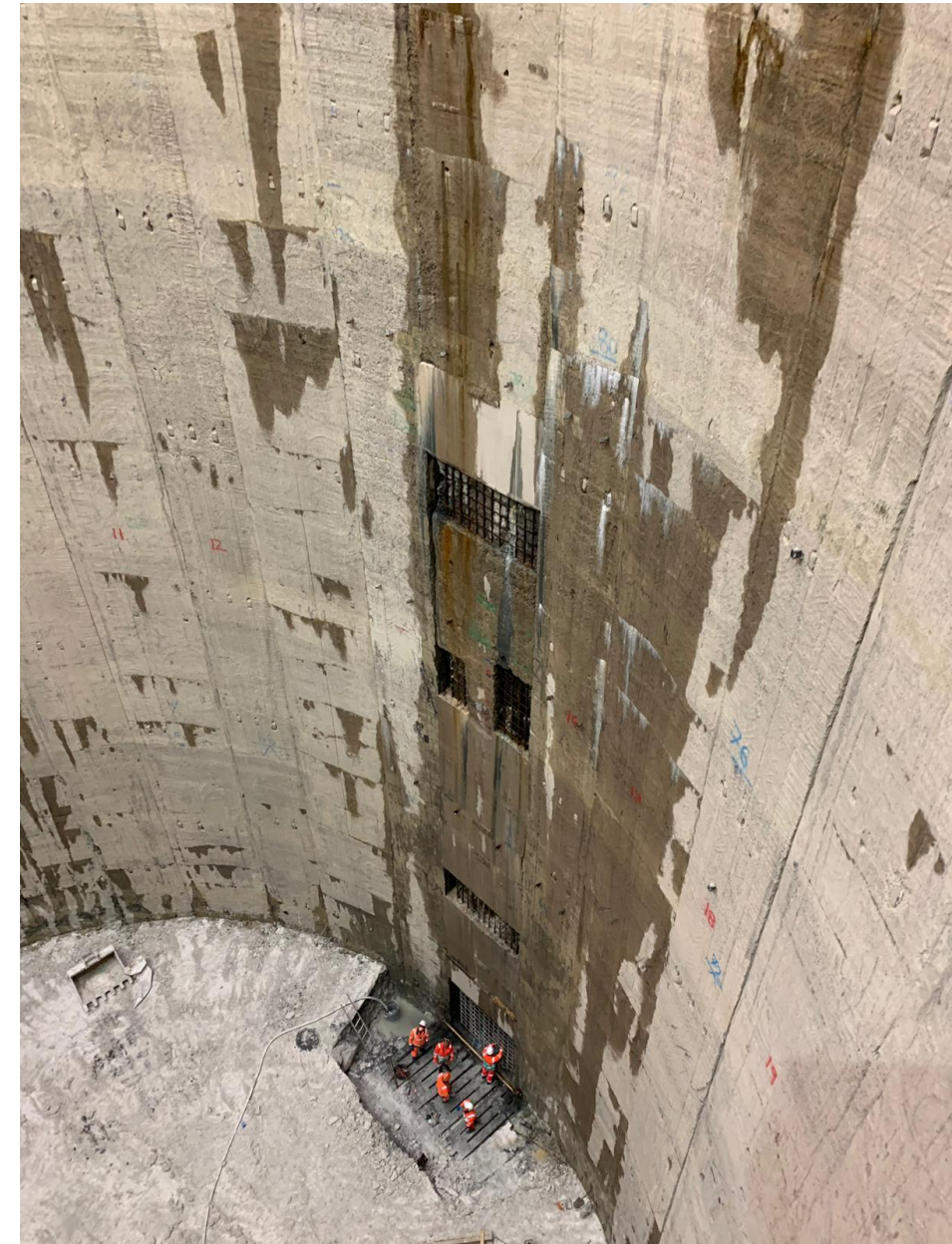
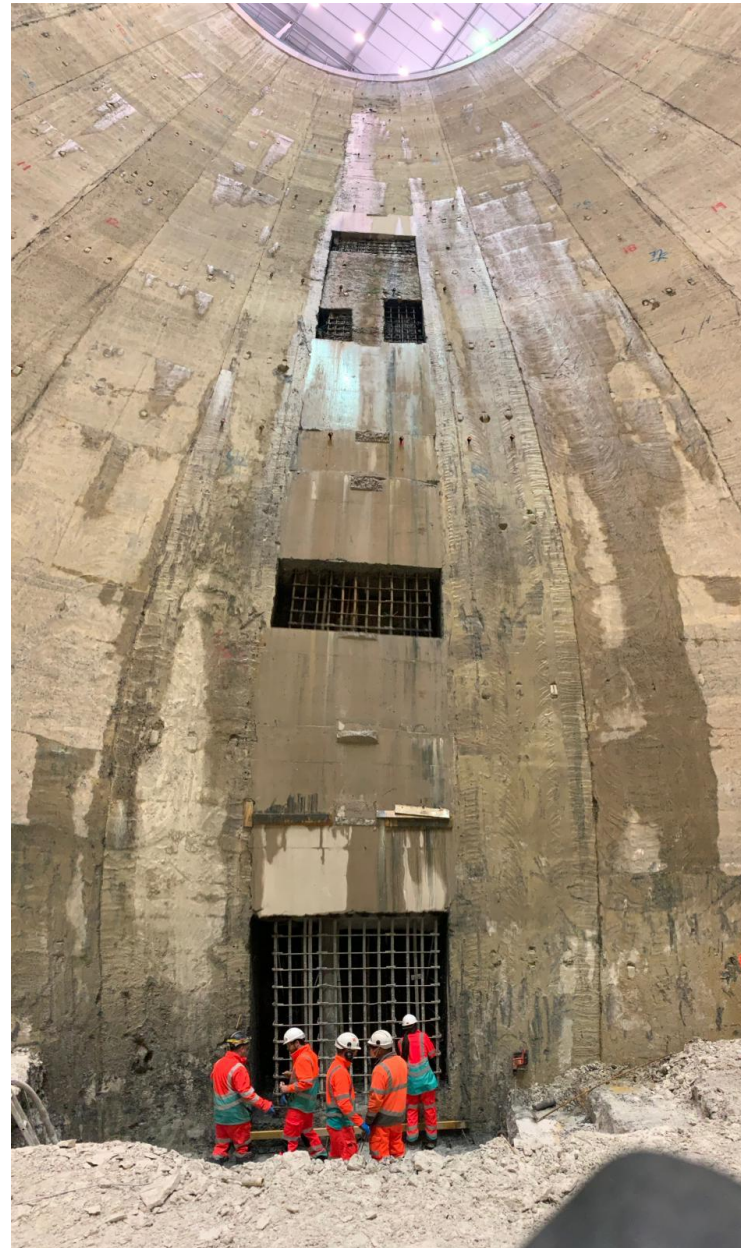
CONSTRUCTION UPDATE



SHAFT

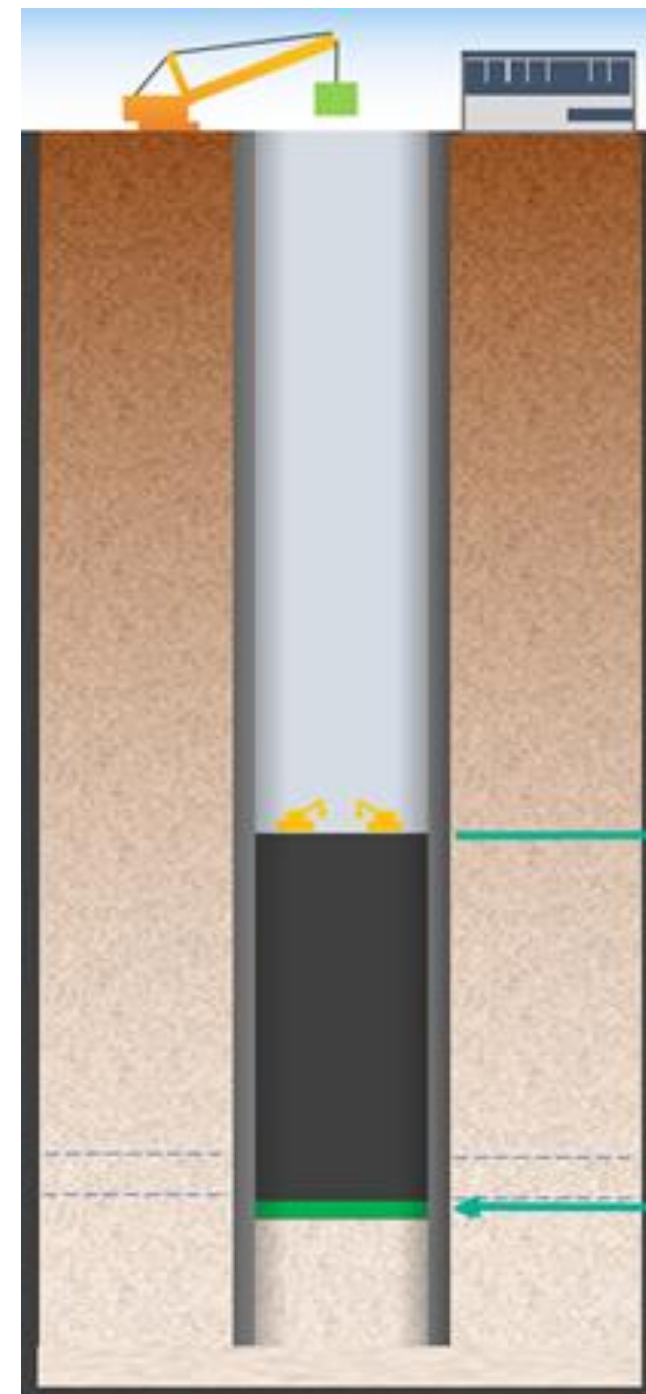
Panel 15 Completed

- Panel 15 completed last week
- Approx. 60m³ of concrete used to repair panel
- 418 days since the panel collapsed



Shaft excavation

- Shaft excavation now at 49.5m below ground
- This continues within the acoustic enclosure, 24-hours per day, Monday to Friday, with the acoustic enclosure doors shut at 18:00
- Movement of excavated material outside the acoustic enclosure within normal working hours only
- We are now at chalk level within the shaft



Current depth:

**49.5
metres**

Excavated

75%

64 metres

Barge movements this year...so far

43 barges removed
44,403 tonnes of spoil
avoiding over **2,466**
lorry movements
in and out of Chambers
Wharf

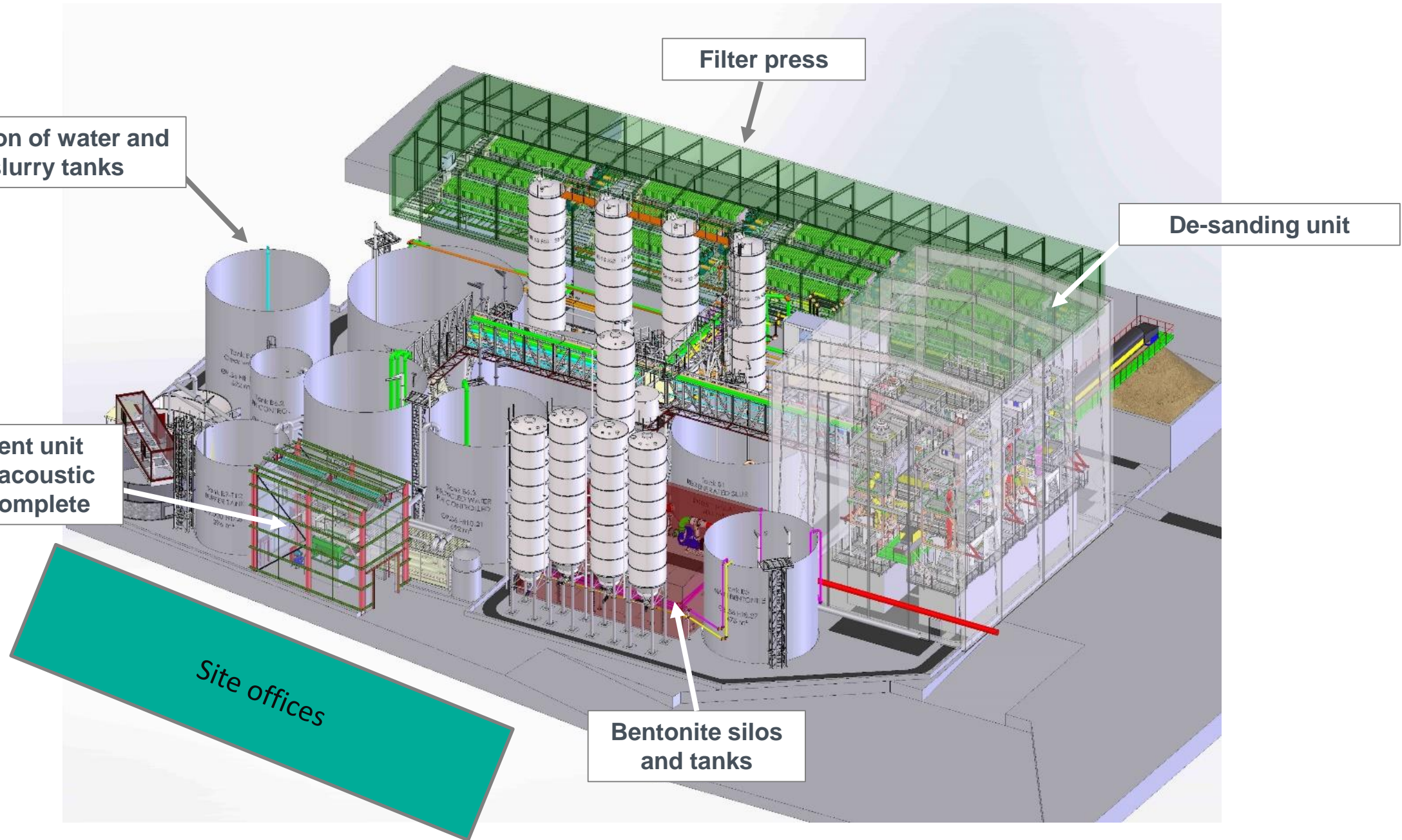


Slurry Treatment Plant

- Foundations are over 90% complete
- This month there will be a small amount of concrete breaking for the final sections of the foundations
- Concreting of the filterpress base and walls will be ongoing till the end of next month
- Breaking will be completed using cutting and splitting to reduce the amount of breaking
- The de-sanding unit is built and we are working on the acoustic enclosure around it
- Installation of the STP will continue throughout this year – next stage is the bentomix plant



Slurry Treatment Plant



24-hour concrete pour for the base slab in the shaft (June 2019)

- The base slab will be the reinforced concrete structure at the bottom of the shaft
- It must be poured in one continuous operation to ensure quality and groundwater tightness
- Concreting the base slab will last approximately 36 hours
- We have greatly reduced the size of the slab by careful design, which means it can be poured much faster than base slabs on other Tideway sites. Original slab design was approx. 400 wagons. Our newly designed slab = approx. 200 wagons

Mitigation during base slab pour

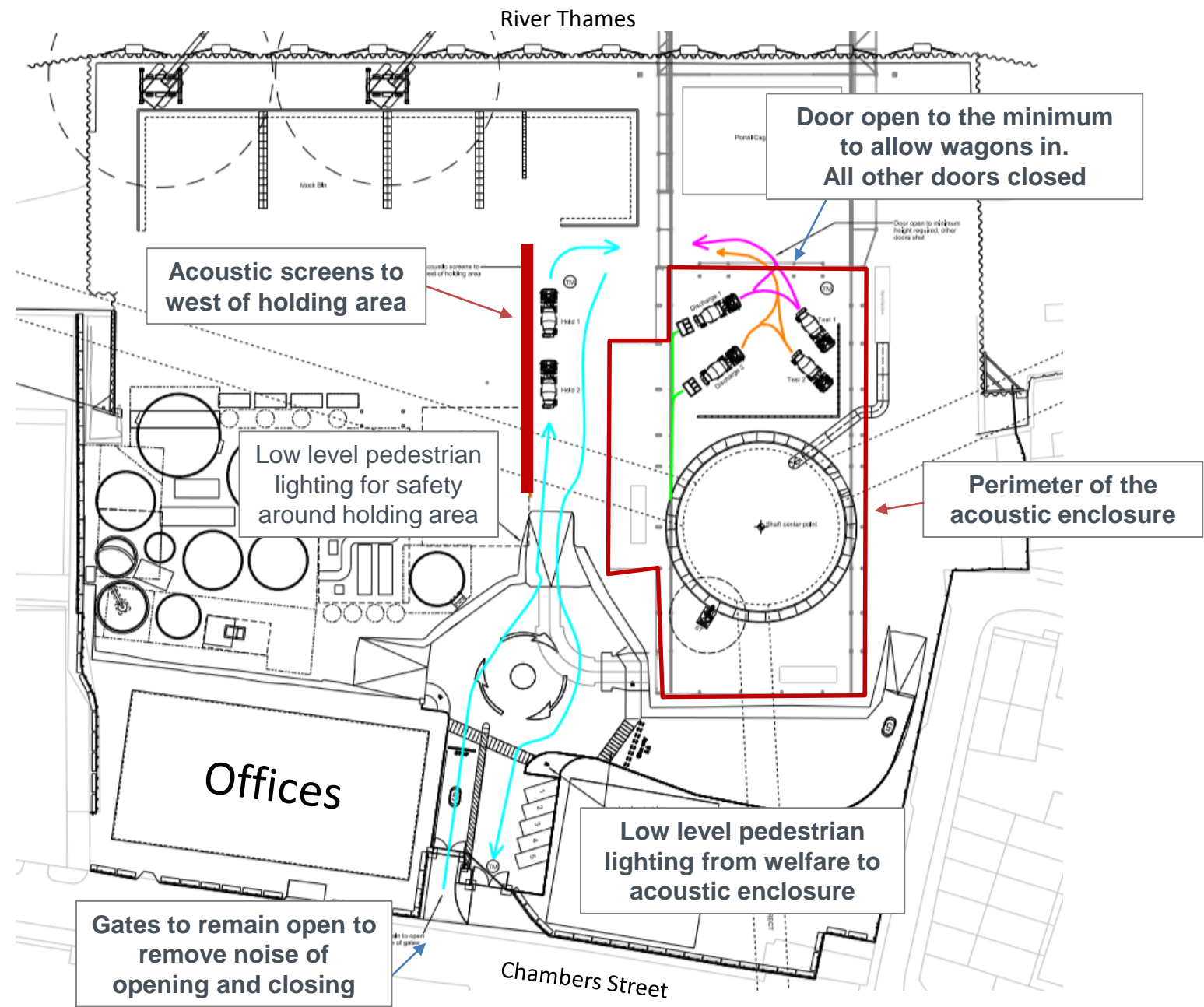
- All concrete poured from inside the acoustic enclosure
- Acoustic screens placed around waiting vehicles
- One way system to minimise wagon movements and eliminate the use of reversing alarm
- No flashing lights on moving plant
- Concrete tested inside the acoustic enclosure
- Wherever possible, concrete wagons will be washed off site
- Weekend working to reduce disturbance compared to the week (Friday to Saturday)
- Keep site lighting to the minimum needed for safe working
- Brief all our workers to keep noise to a minimum and display considerate behaviour
- Wagon drivers told to drive slowly to and from the site and to remain in their vehicles between 22:00 and 08:00

Friday to Saturday for the continuous pour

- Reduced traffic on Fridays and Saturdays
- Full use of the concrete batching plant on Friday night and Saturday, which enables them to focus on concrete for the base slab pour
- Less risk of an overrun



Planned site setup during 24 hour base pour



Shaft Base Slab Construction – Continuous Concrete Pour

Some people are affected more than others by construction work such as noise and vibration. If you feel you may be affected by any of Tideway's work, including the upcoming base plug concrete pour in May –

Apply to the Independent Compensation Panel (ICP) to be considered a Special Case

You can make an application for additional mitigation or temporary respite during these works.

Where do I go for information?

Visit the Chambers Information Centre, open on Wednesdays 2pm to 7pm

Tideway Helpdesk - the Mitigation and Compensation Lead will then contact you: **08000 30 80 80** or helpdesk@tideway.london

Talk to Jacqueline Christie, Consultation and Involvement Officer LB Southwark Community.Engagement@southwark.gov.uk or **07840 647604**

Independent Advisory Service (IAS) Helpline for independent advice: **0800 917 8845** or info@tidewayias.co.uk

How do I make an application?

Our Mitigation and Compensation Lead can submit a claim to the ICP on your behalf,

Jackie Christie, LB Southwark Consultation and Involvement Officer can submit a claim on your behalf.

You can apply directly to the ICP: admin@tidewayicp.london

If you have any further questions, please contact the Tideway Helpdesk on **08000 30 80 80** or email Helpdesk@tideway.london.

Section 61 for Shaft Construction Phase

- Section 61 phase four covers anticipated construction work: June 2018 – October 2019
- Continuous base slab pour approved by LB Southwark
- S61 for tunnelling works is currently being developed and will be submitted to Southwark next month

Permitted Site Working Hours

Standard Working Hours: 08:00 to 18:00 (Monday to Friday) and 08:00 to 13:00 (Saturday)

Extended Working Hours

- 18:00 to 22:00 (Monday to Friday). 08:00 to 17:00 (Saturday)
- General works limited to tidally influenced marine movements, lighting (task specific) and gantry crane movements within shaft enclosure
- Phase 2 shaft excavation material movements

Movement of excavated material outside of the shaft enclosure up to 20:00 Monday to Friday; up to 17:00 on Saturdays. For six weeks or to 30m depth, whichever is sooner – complete

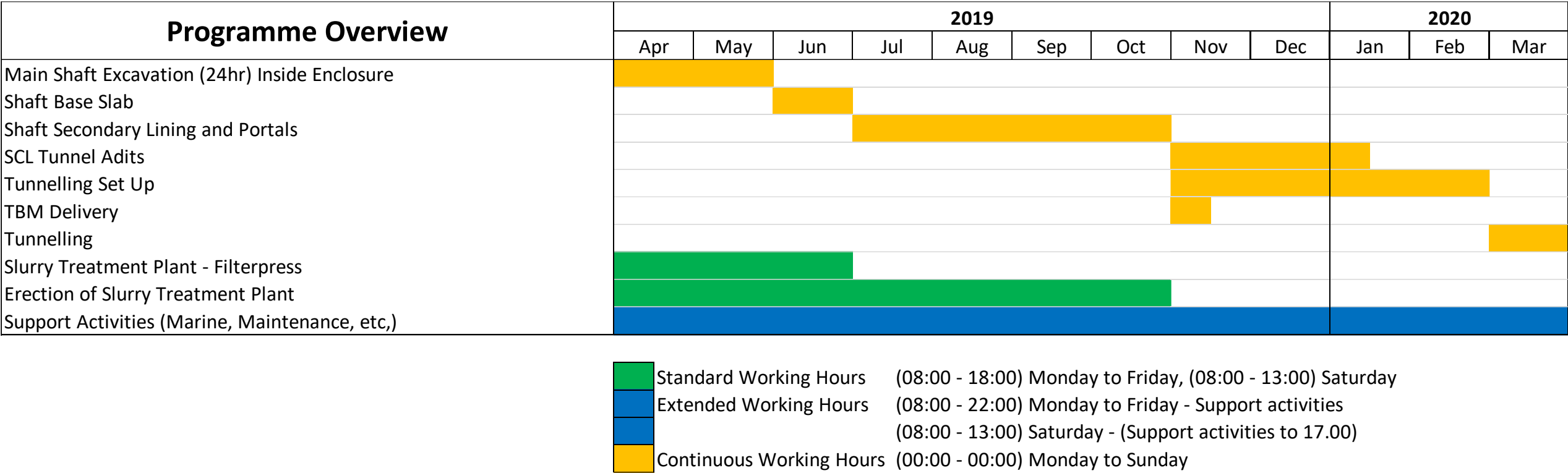
Continuous Working Hours (24/7)

- For steel fixing and base slab preparatory works, phase 2 shaft excavation (within enclosure) and secondary concrete lining construction.
- Base slab concrete pour – Friday to Saturday

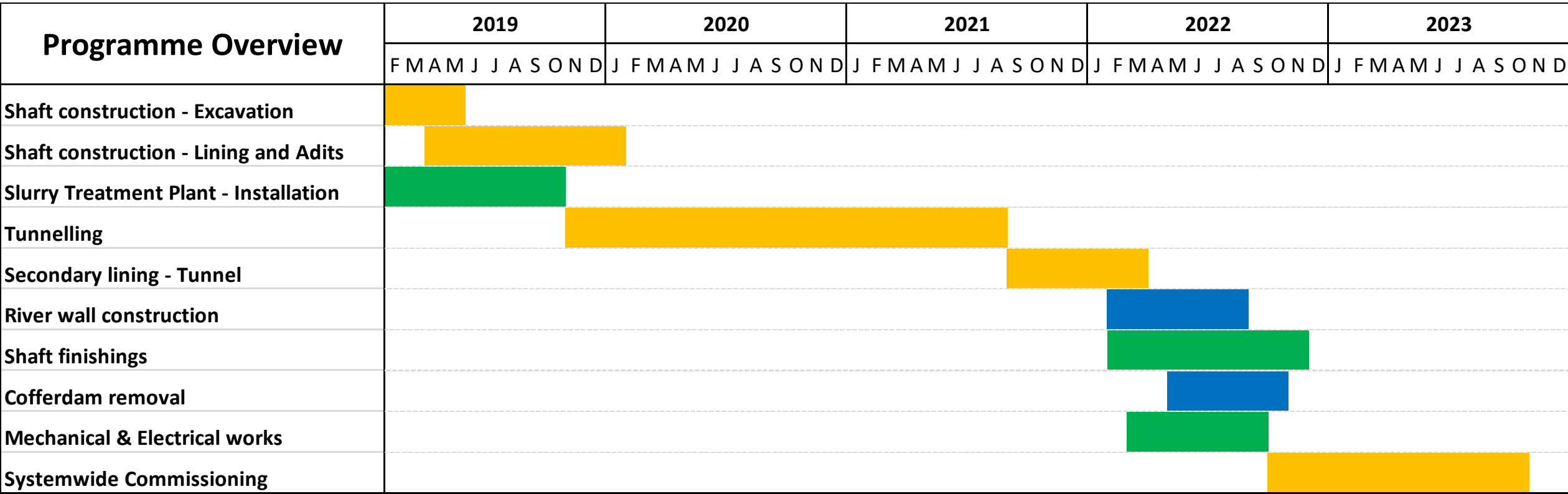
Mobilisation and demobilisation Hours

- 07:00 to 08:00 and 18:00 to 19:00 (Monday to Friday). 07:00 to 08:00 and 13:00 to 14:00 (Saturday)
- 22:00 to 22:30 (Extended working hours activities) (Monday to Friday). 17:00 to 17:30 (Extended working hours activities) (Saturday)

12-month draft look-ahead



Chambers Wharf Target Programme



Application for permanent designs

- River wall
- Ventilation columns, electrical, control kiosk and a stand alone piece of artwork

Applications for the approval of design details for the new river wall and ventilation columns, electrical, control kiosk and a stand alone piece of artwork, are planned to be submitted to the London Borough of Southwark in the next few weeks.

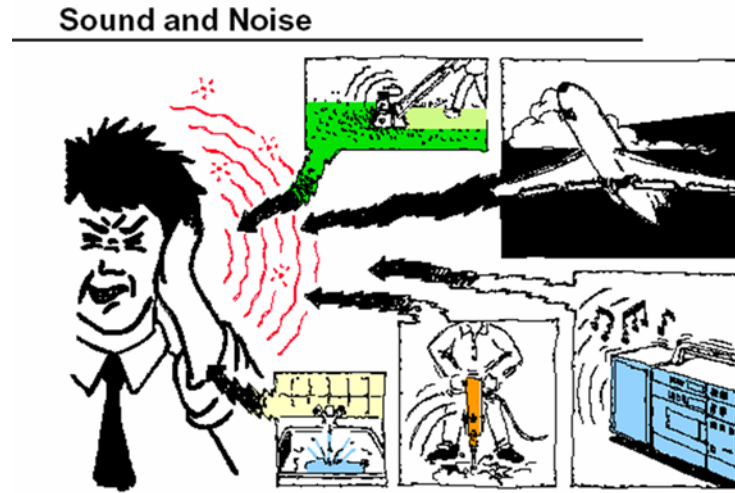
Please raise any comments to the London Borough of Southwark.

There will be a drop in meeting held at the Chambers Wharf visitors centre to discuss the details of the permanent designs.

Noise and Air Quality

Sound and Noise

Sound is a sensation of acoustic energy waves (disturbance/ pressure fluctuations)



Unpleasant, unwanted, disturbing sound is generally treated as **Noise**

Question - What is a decibel?

Answer - unit of noise measurement

The human ear responded logarithmically to power difference

Alexander Graham Bell invented a unit Bel to measure the ability of people to hear

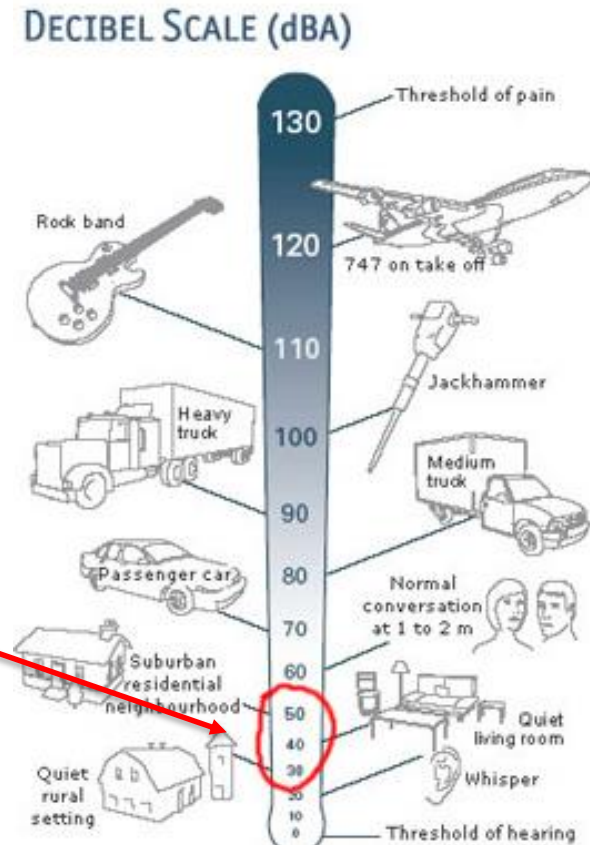


Power Ratio of 2 = dB of 3

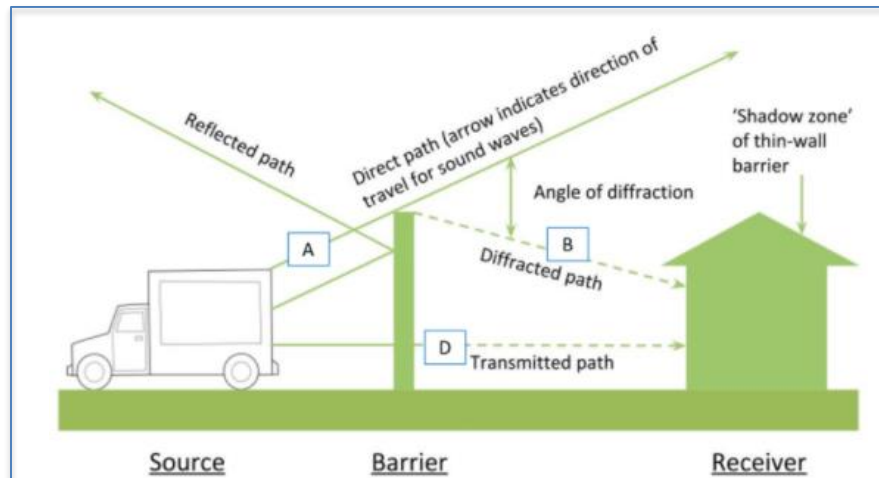
Power Ratio of 10 = dB of 10

Power Ratio of 100 = dB of 20

What we would
consider quiet



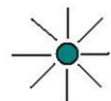
Fundamentals of management (screening)



Screening is an effective way of reducing sound/noise between source and receiver

Source – Pathway – Receptor relationship.

- Source may be an item of plant
- Pathway is the media previously discussed.
- Receptor of concern is the workforce and residents



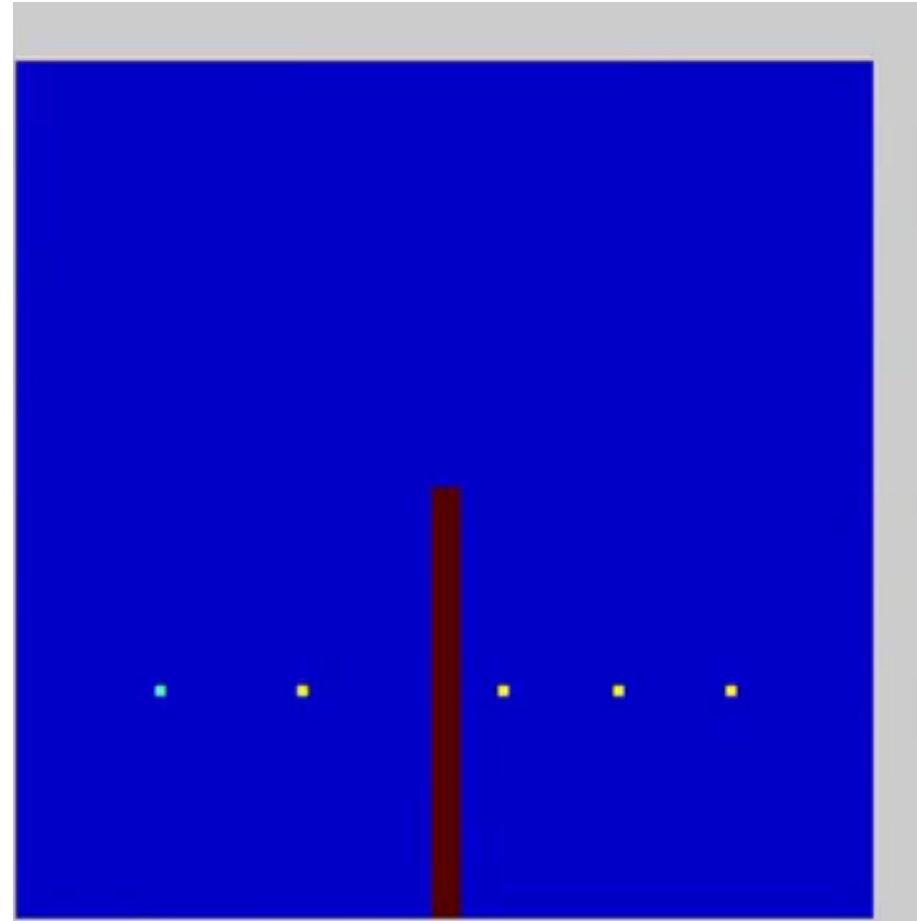
Source



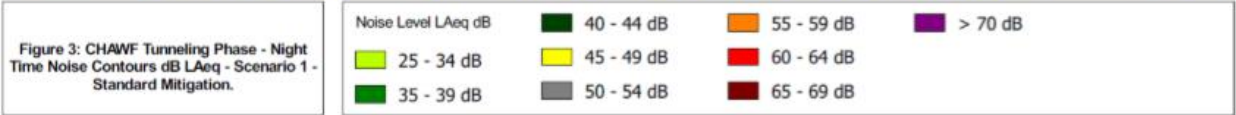
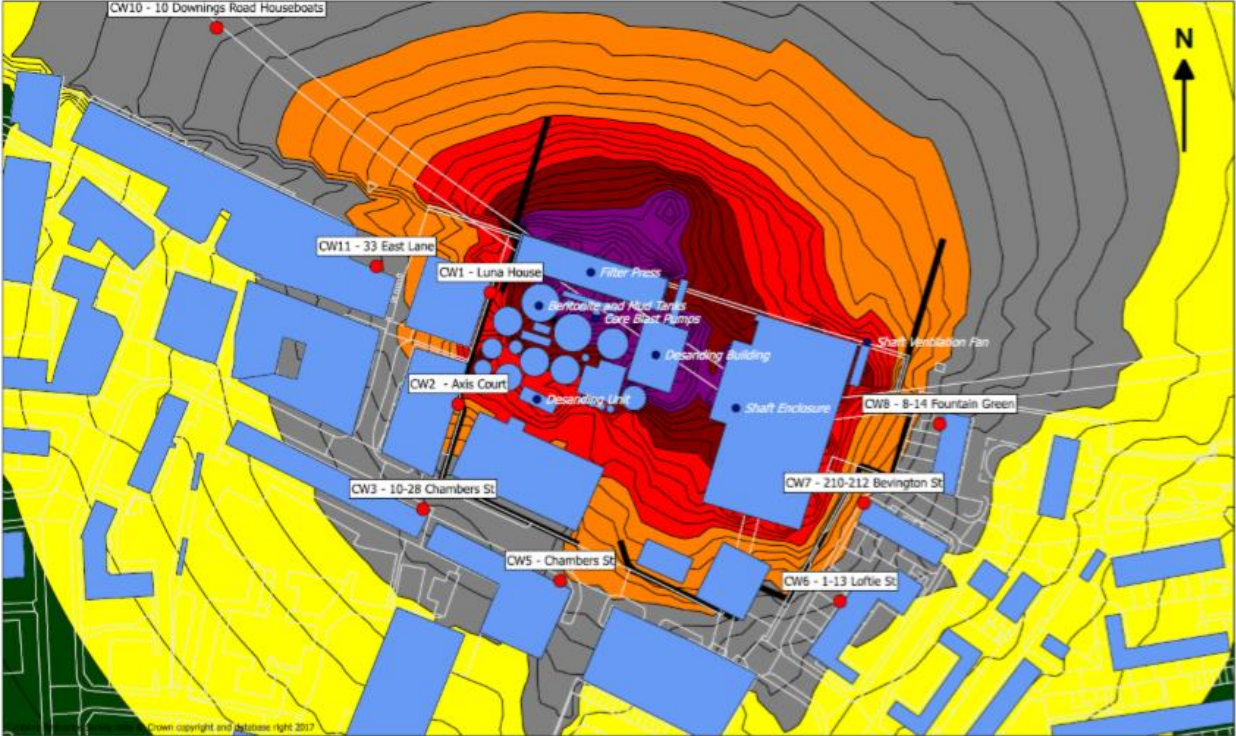
Path



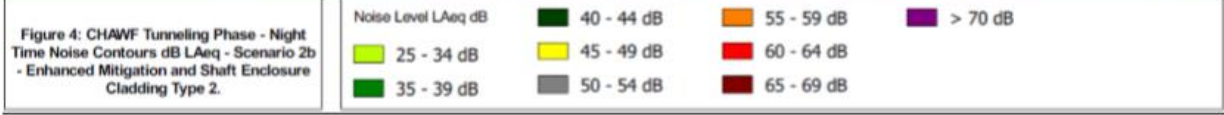
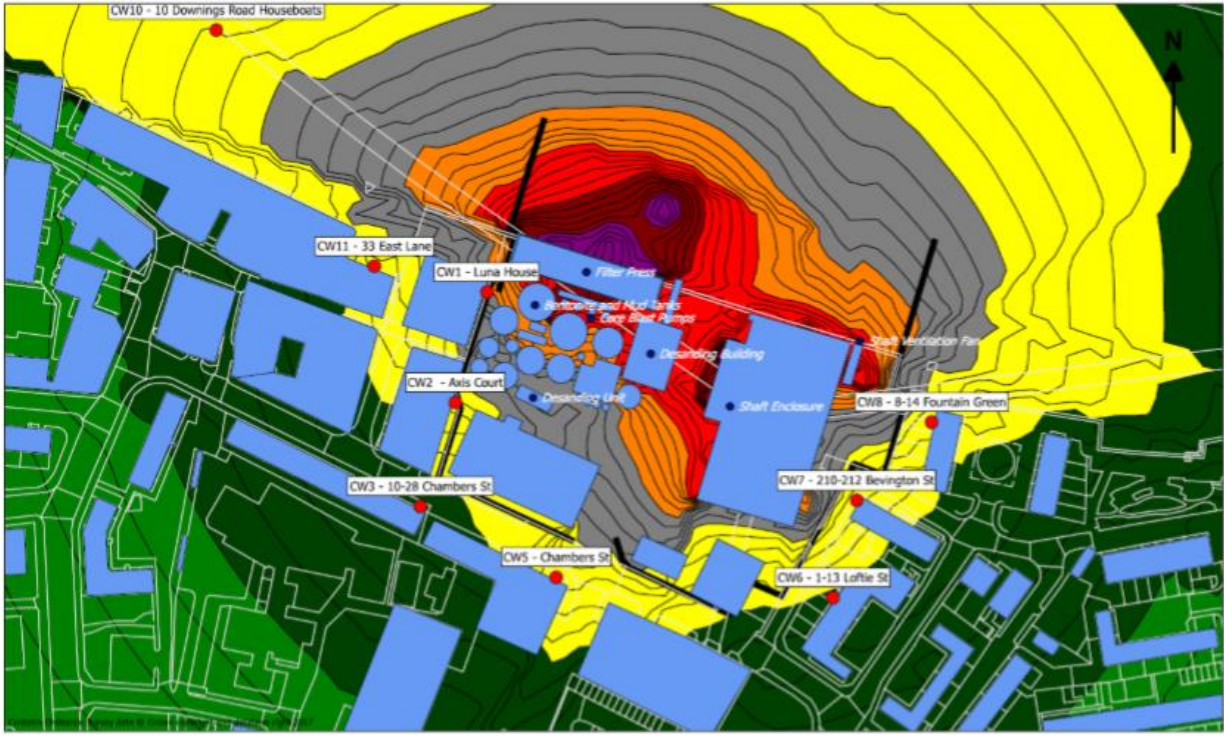
Reciever



Fundamentals of management (acoustic enclosures)

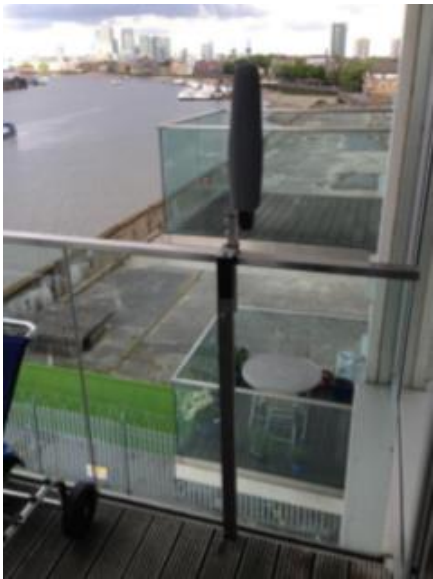
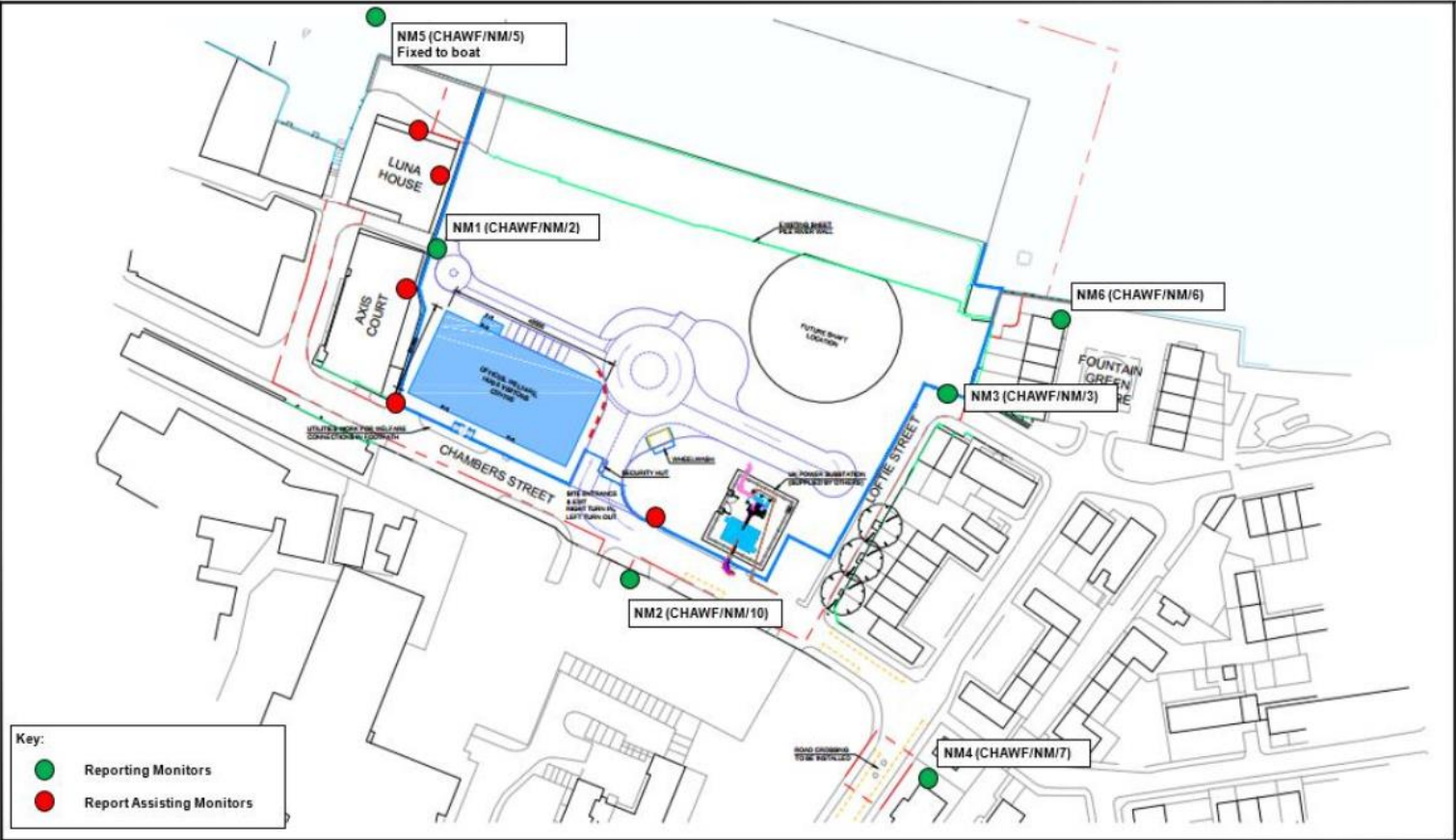


Typical attenuation

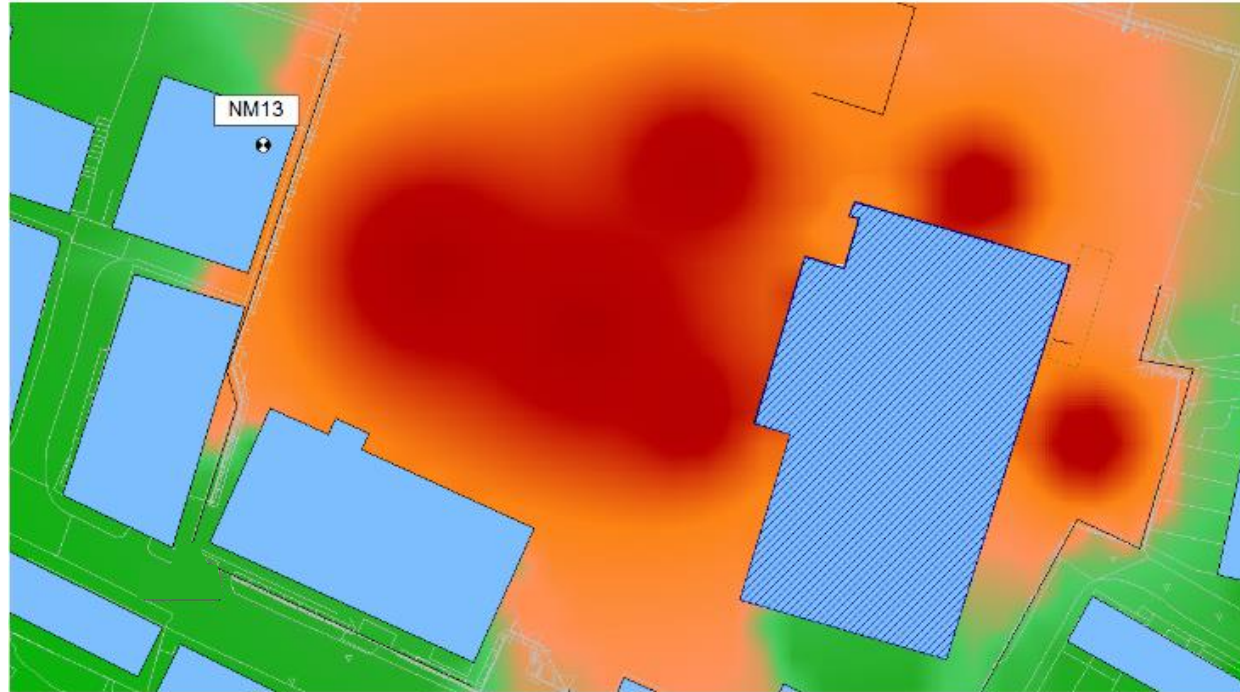


CHAWF attenuation

Continuous noise monitoring locations

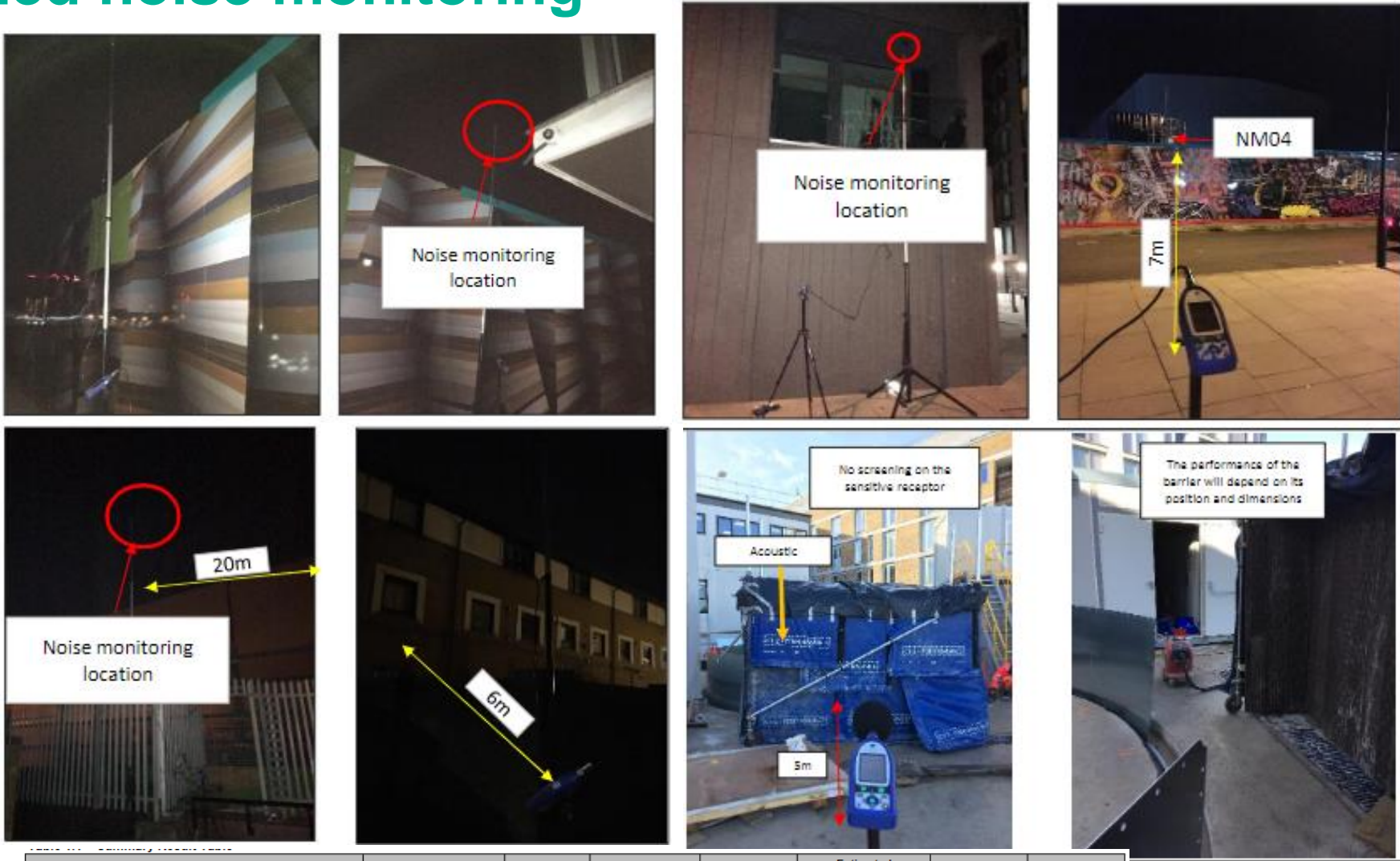


Non-beneficial noise monitor



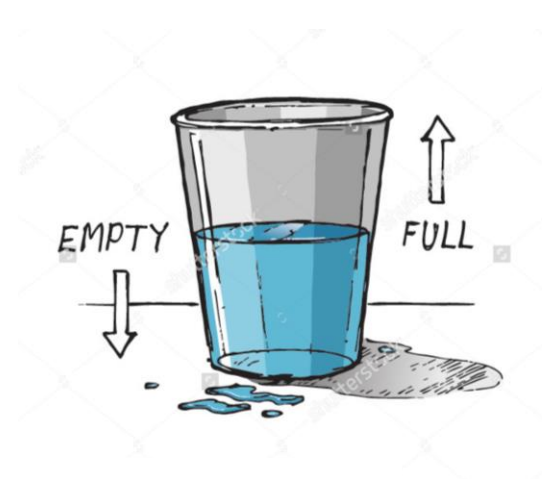
Screened by Luna house facade

Attended noise monitoring

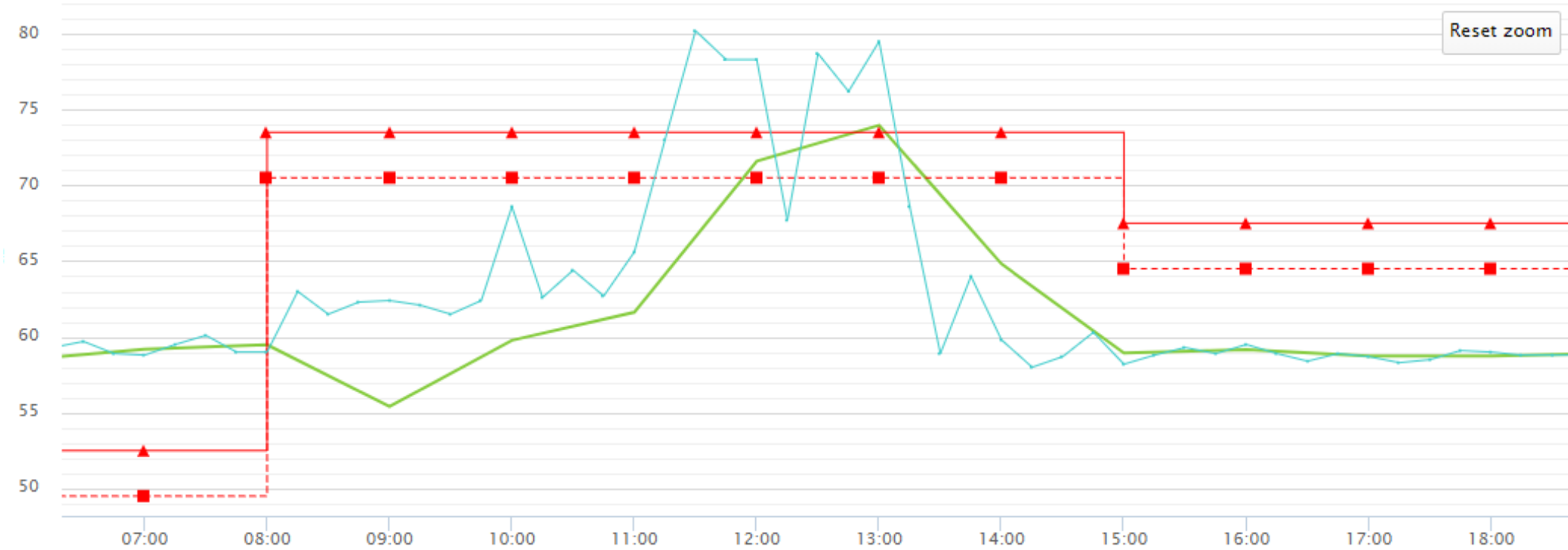


ATTENDED NOISE MONITORING REPORT			CVB Activity	Start Time	Measurement Duration	Measured Noise Levels, dB ^[1]	Estimated Construction Noise Level at the Receptor, dB ^[2]	Monthly S61 Consented Levels, dB ^[3]	Compliant with S61? ^[4]
S61 Ref.	Location	Façade Free-field		22.01.2019	mm:ss	L _{Aeq, 16mins}	L _{Aeq, 16mins}	L _{Aeq, 10h}	Y/N
CW1	Luna House	Free-field	General site activities, not STP construction works	12:44	15:00	63	<66	78	Y
CW8	8-14 Fountain Green Square	Free-field		13:10	15:00	59	<62	72	Y

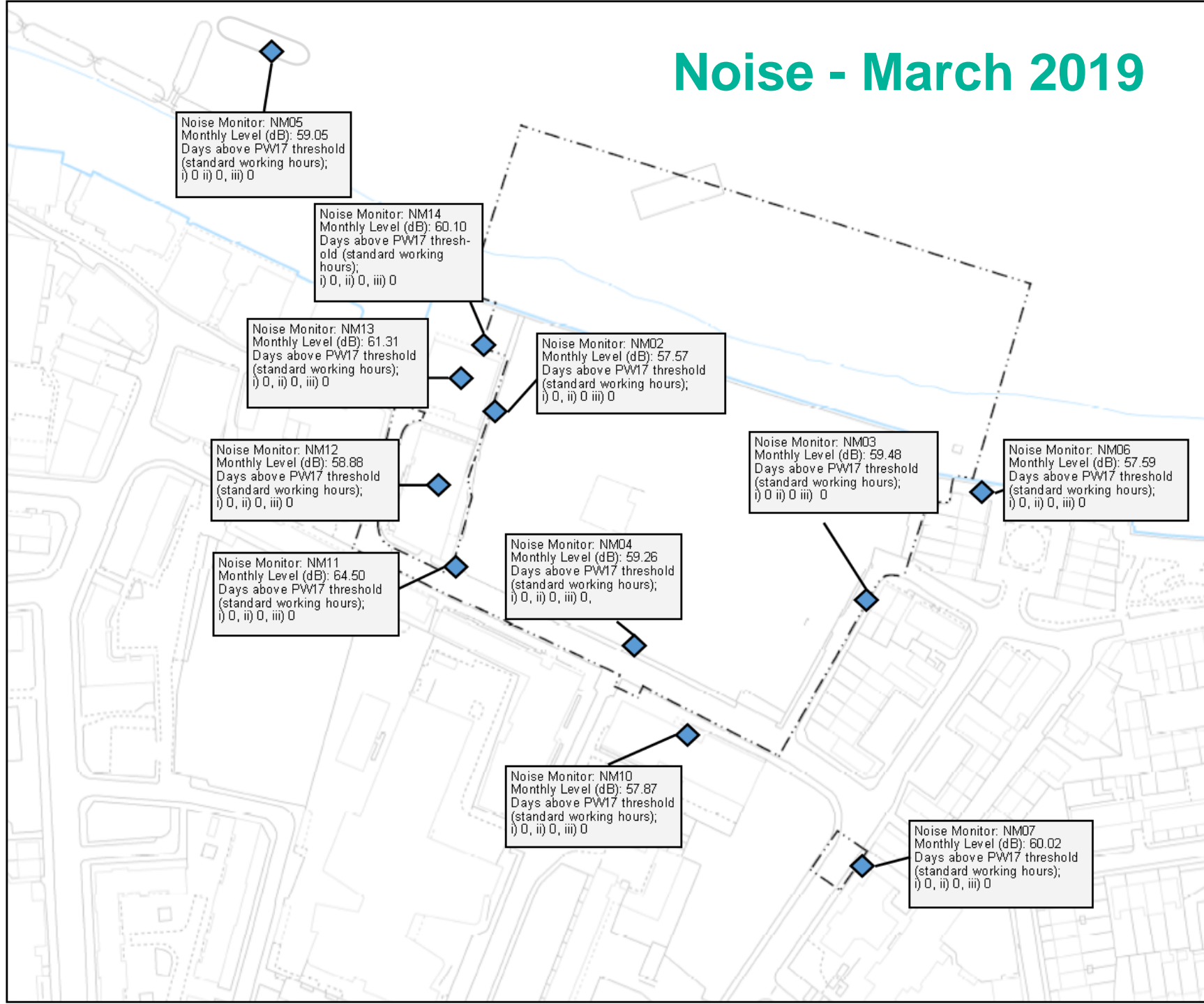
Noise measurement



EARPS_NM_01_Analysis



Noise - March 2019



Key

- Limits of Land to be Acquired or Used
- Noise Monitor

Explanatory Note:

Days over PW17 thresholds during standard working hours.

This level should not be exceeded more than 10 times in 15 consecutive days or 40 times in any 6 months.

N.B. Houseboats have a lower trigger level of 65 dB. Schools have a trigger level 5 dB above either the baseline level (indoors or outdoors) or guidance, whichever is the higher.

i) - The number of days in the calendar month that have exceeded the daytime trigger level.

ii) - The highest number of days in a consecutive 15-day period that have exceeded the daytime trigger level.

iii) - The number of days in a 6-month period that have exceeded the daytime trigger level

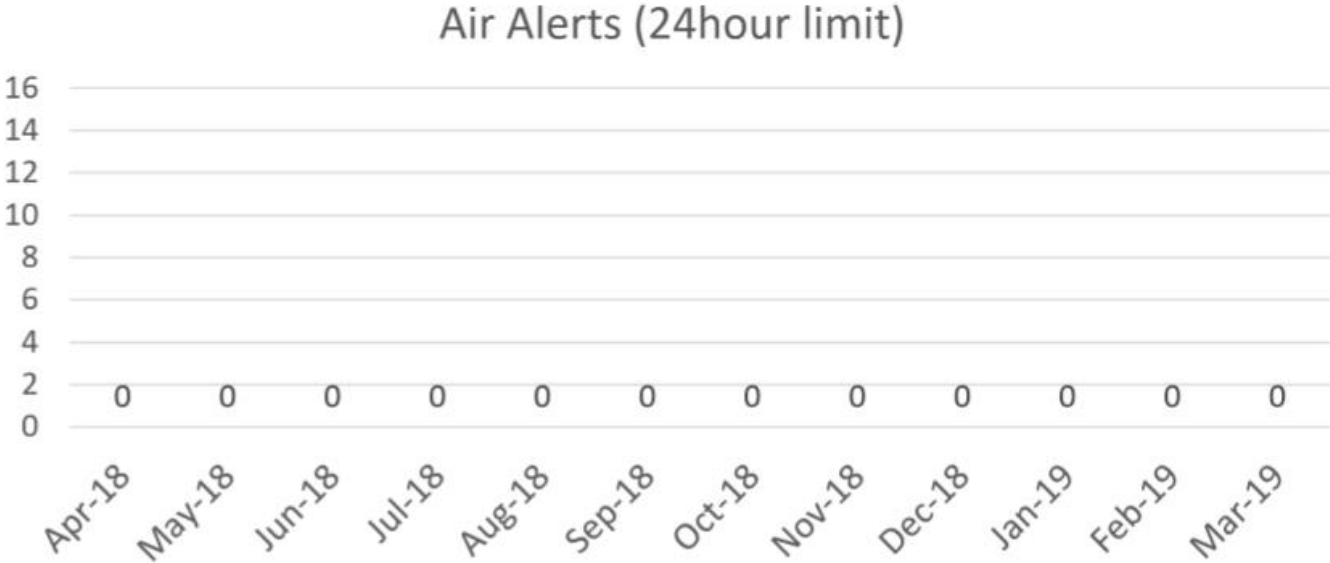
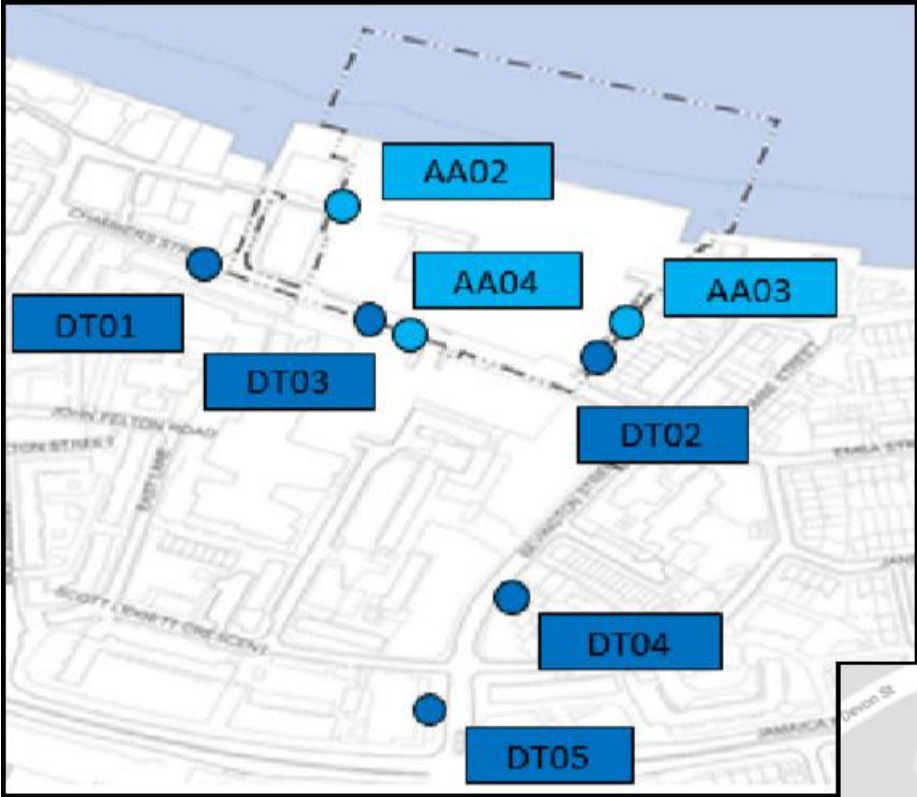
The 'Monthly Level' is the daily 10 hour average over the month.

For In- Scale 1 : 1,250 at A3

Location
Chambers Wharf
London Borough of Southwark
Document Information
Noise Monitoring

March 2019

Air Quality - March 2019



Total Allowable Alerts	35 per year
Total March Alerts	0
Number of Alerts (12-month rolling)	0

Legacy

TIDEWAY EAST COMMUNITY INVESTMENT

January – March 2019

LONDON
BOROUGHS
WE'VE
SUPPORTED

6



NUMBER OF HOURS VOLUNTEERED

520



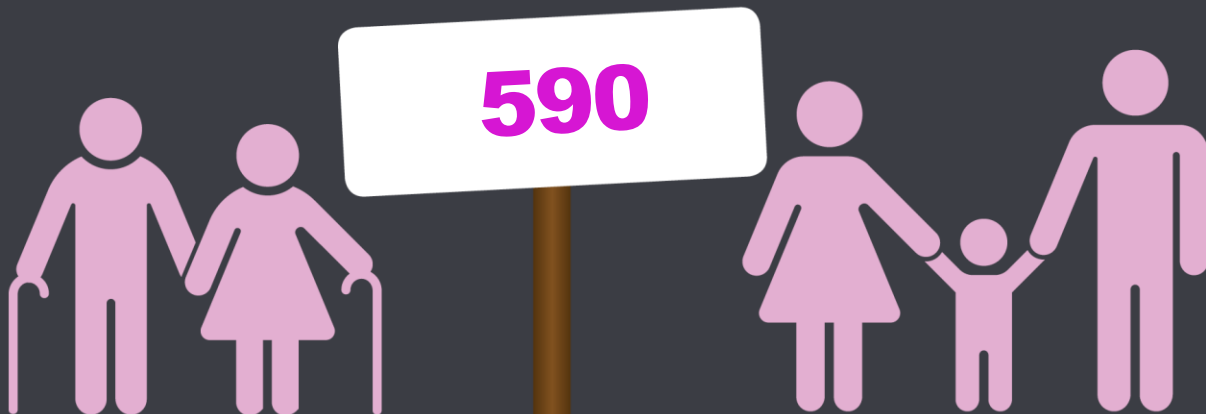
NUMBER OF PEOPLE VOLUNTEERED

144



NUMBER OF PEOPLE WE SUPPORTED

590



ORGANISATIONS WE'VE HELPED

16



Brownies made Mother's Day gifts at Chambers Wharf



Tigger (Brownie Leader) said:

"It's great that the girls are able to come here and have fun whilst learning.

Tideway always make us so welcome, we really appreciate it - they loved the stick game we played"



Women Into Construction - May

“A big thank-you to CVB Tideway East for hosting the May 2019 Women into Construction registration event. Over 40 women attended and heard about potential job and work-placement opportunities, from Tideway and four other construction companies. We look forward to continuing to develop our positive relationship with Tideway East and assisting these women to find employment in the sector”

Managing Director for Women into Construction

In the past 6 months, Tideway East has hosted 6 work placements for women and employed 2 of these ladies on our sites.

Further placements are organised as a result of this WIC event.



**Women  into
Construction**

Trees planted in Deptford



"It's thanks to CVB Tideway and other sponsors supporting the Evelyn200 project that we have been able to plant 100s of trees for children in the area."
Deptford Folk charity

TBM prepares to leave Europe



Tunnel Boring Machine 'Selina' this week in Germany. She will be transported to England this Summer.

Selina

Tunnel Boring Machine





Selina

Tunnel Boring
Machine

If you have any questions or enquiries please contact the Tideway Helpdesk on:

Telephone: 0800 030 80 80

Email: Helpdesk@Tideway.London