



Chambers Wharf Community Liaison Working Group

Monday 15 July 2019

Legacy



**Tideway at the
Pride Parade**

Archaeology Walks



Residents traced Bermondsey's history by discovering artefacts uncovered by the river during two archaeology walks

Interesting artefacts included numerous fragments of pottery, various ship remains and a section of animal antler which, on initial inspection, could date back to prehistoric times.

The organisers of the event, Clayground Collective said:

"Several people commented on how fascinating it was to learn about the rich history to be found on the beach. The tide was extra low, so we were able to see the (thought to be) bronze age timbers exposed"



Oarsome Challenge

16 teams took part in a 13 mile row along the River Thames from Wapping to Chiswick
Raised more than £34,000 for London Youth Rowing



Breaking Barriers



- 2019 annual 12-week programme has started
- Mentoring sessions with staff volunteers in partnership with London Youth Rowing
- Soft skills development, combined with physical rowing

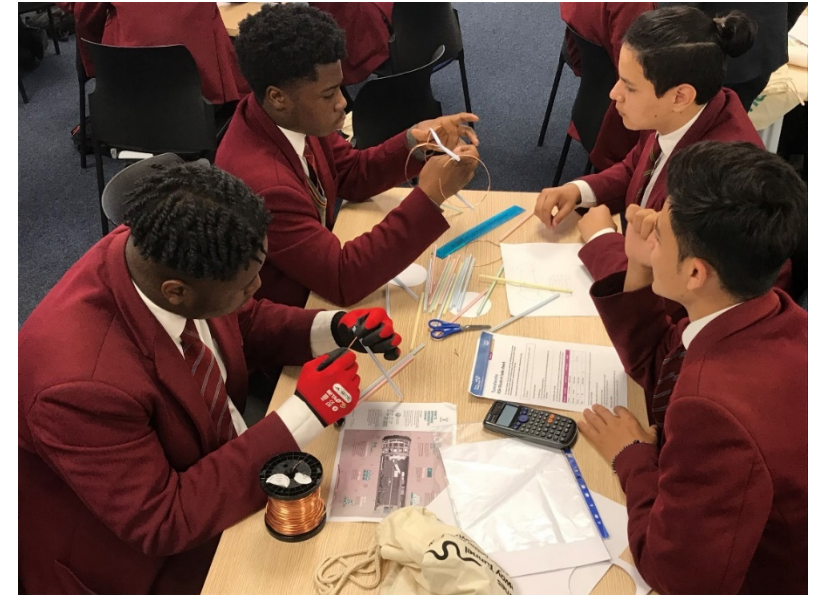
Recent feedback:

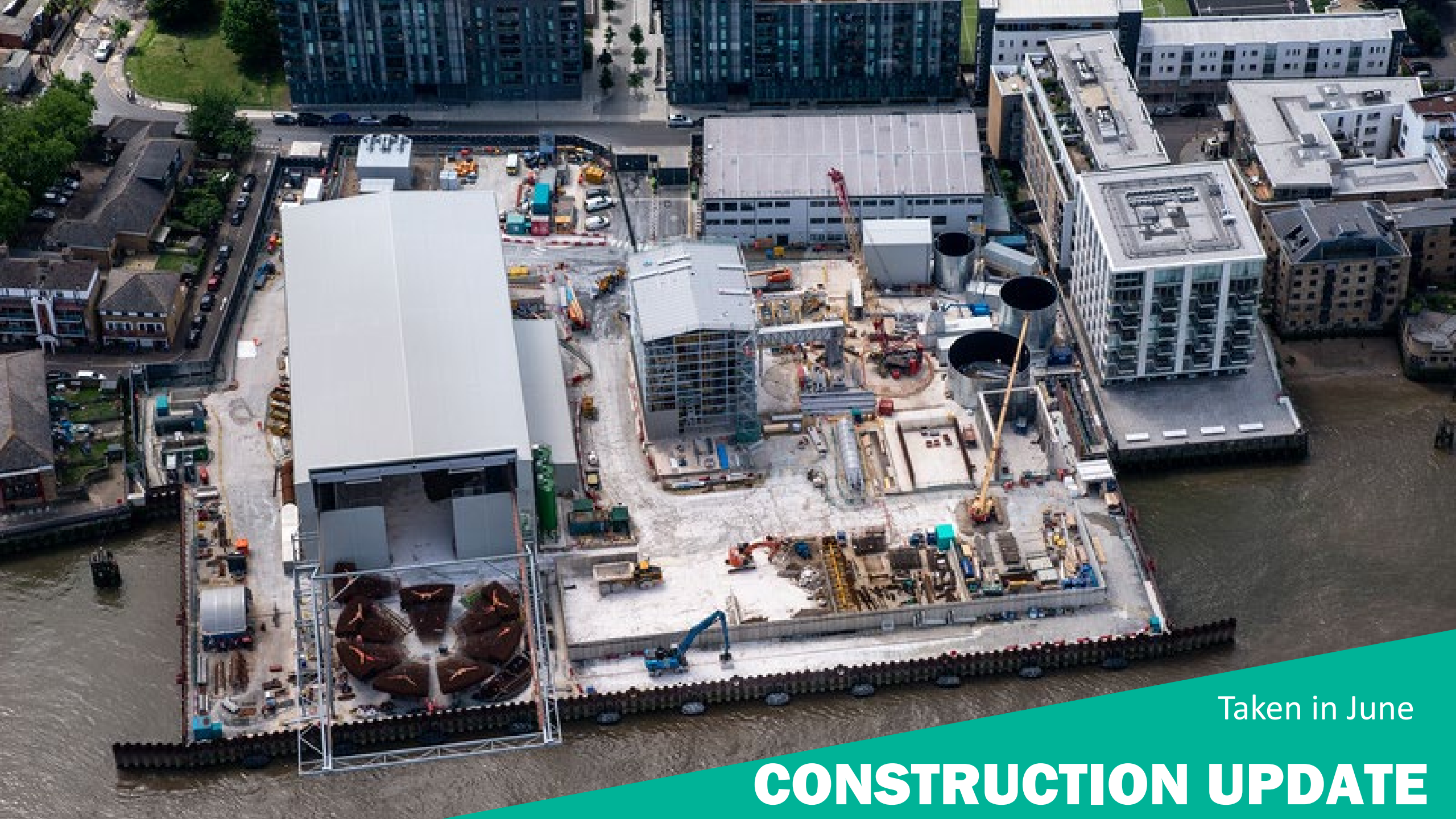
“It was a thrilling and exciting experience going on site where I got to see the shaft. I have also started rowing at Surrey Quays. I’m really enjoying it and am looking forward to mentoring at Chambers Wharf.”



Tunnel Challenge

St Thomas the Apostle School visit to Chambers Wharf
Challenged to design and build a tunnel to specific designs
and within budget
The designs were then tested with the winning team for
durability and cost efficiency getting reusable water bottles





Taken in June

CONSTRUCTION UPDATE

Shaft

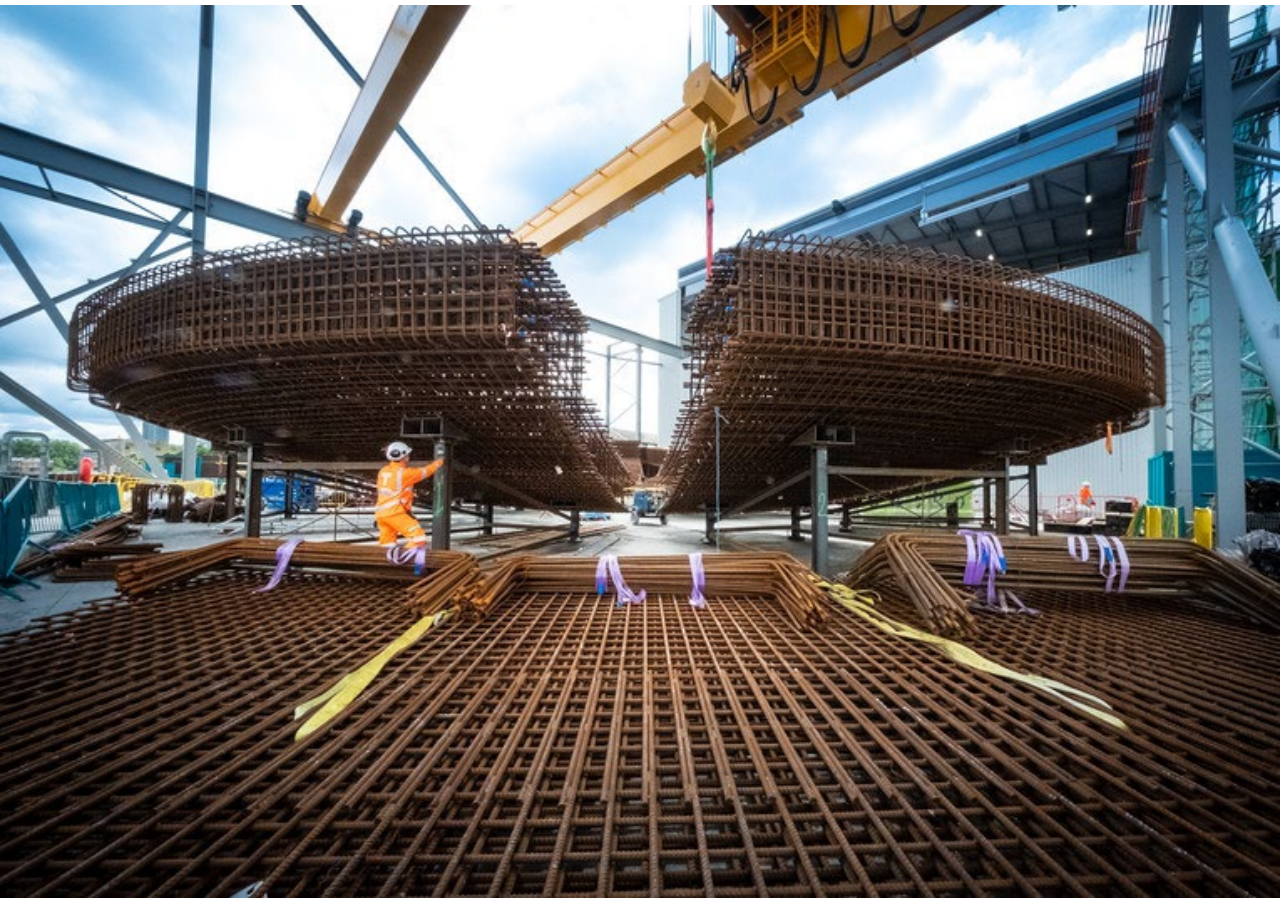
Excavation now completed at 64 metres deep

(height of a 21 storey building)



Forming the base slab

We have finished fixing reinforcement steel cages to form the base slab at the bottom of the shaft, before we begin concreting this Friday

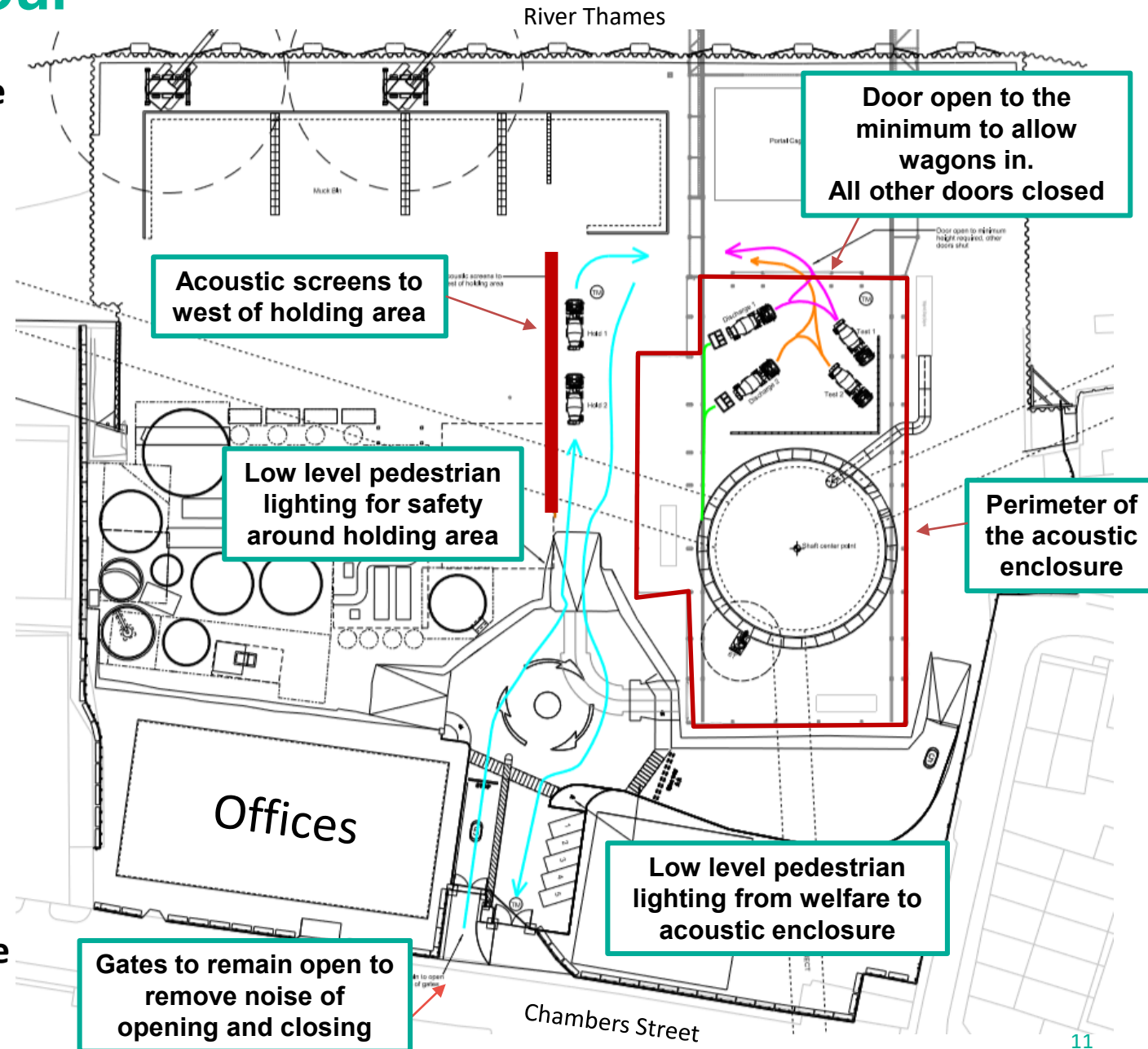


36-hour concrete pour for the base slab – from Friday 19 July

- **It must be poured in one continuous operation to ensure quality and groundwater tightness**
- **Concreting from the morning of Friday 19 July until the evening of Saturday 20 July**
- **This delayed date is due to having to change shaft excavation equipment and a safety stand down (not working for a period) after an incident at another Tideway construction site**
- **Concreting the base slab will last approximately 36 hours**
- **Once complete, the shaft base slab will be 25m in diameter and around 3m thick**
- **We have greatly reduced the size of the slab by careful design, which means it can be poured much faster than base slabs on other Tideway sites. Original slab design was approx. 400 wagons. Our newly designed slab = approx. 200 wagons**
- **The pour will be taking place from Fri-Sat as there is reduced traffic from weekdays. It also allows us full use of the offsite concrete batching plant, enabling them to focus on concrete for our base slab pour and reducing risk of an overrun**

Mitigation during base slab pour

- All concrete poured from inside the acoustic enclosure
- Acoustic screens placed around waiting vehicles
- One way system to minimise wagon movements and eliminate the use of reversing alarm
- No flashing lights on moving plant
- Concrete tested inside the acoustic enclosure
- Wherever possible, concrete wagons will be washed off site
- Weekend working to reduce disturbance compared to the week (Friday to Saturday)
- Keep site lighting to a minimum needed for safe working
- Brief all our workers to keep noise to a minimum and display considerate behaviour
- Wagon drivers told to drive slowly to and from the site access and to remain in their vehicles between 22:00 and 08:00



Shaft Base Slab Construction – Continuous Concrete Pour

Some people are affected more than others by construction work, such noise and vibration.

Those who believe they may be affected by the work can apply for temporary respite during the concrete pour.

Here is a summary of applications made to the Independent Compensation Panel (ICP) for temporary respite during these works:

Approximately 90 applications made to date.

Approximately 60 applications have been successful and have been awarded temporary respite during the concrete pour.

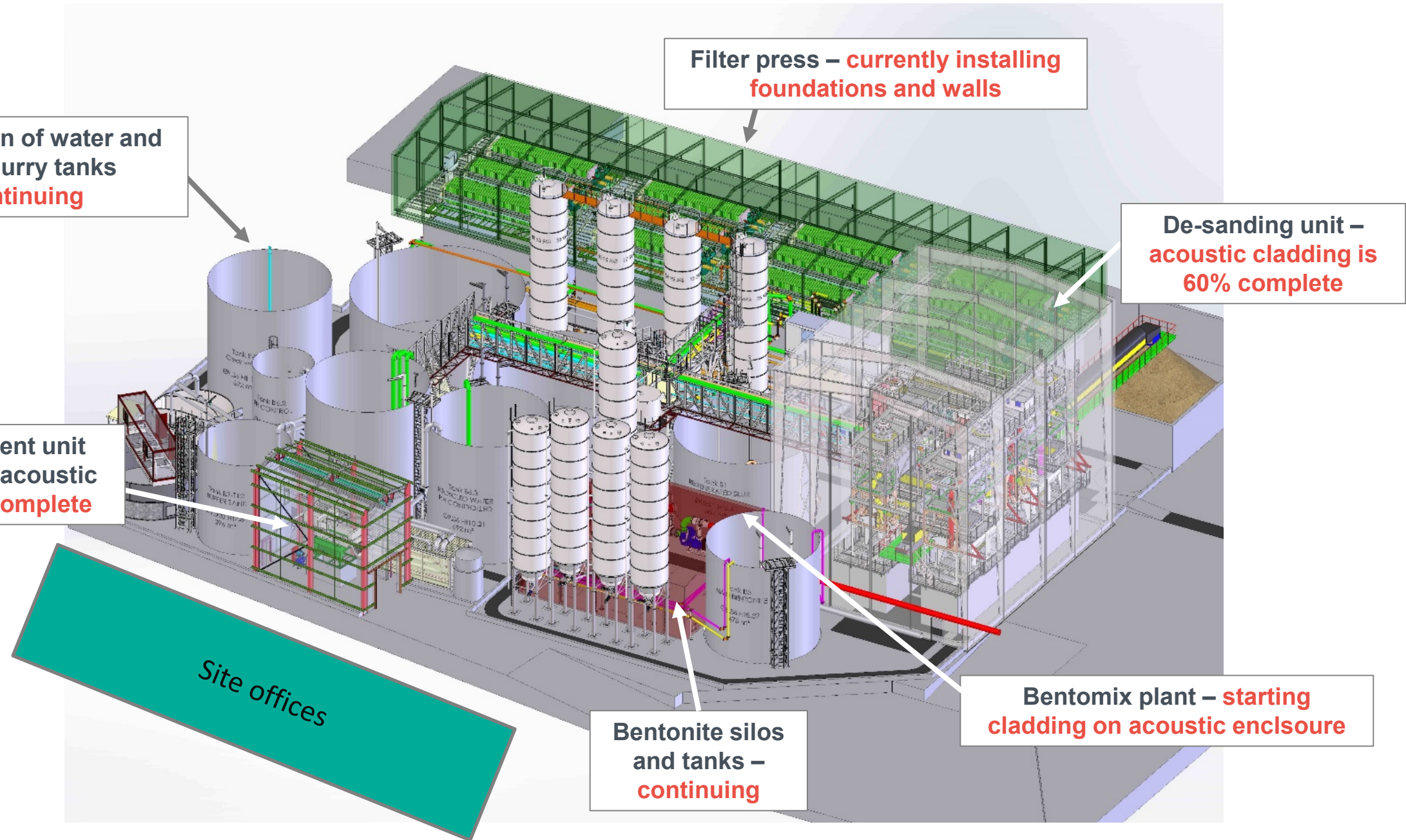
Following feedback, additional flexibility has been given to successful applicants to arrange their own respite accommodation. Tideway can still arrange this if required.

Slurry Treatment Plant

- We have installed the bentomix plant, with the steel structure for its acoustic enclosure also complete. The cladding will be placed on it from this month
- We are forming the four bays of the filter press walls, which will continue into September. The second bay should be concreted this week
- We have placed around 60% of the acoustic cladding on the de-sanding unit enclosure
- Foundations are over 90% complete, with a small amount of concrete breaking left to do
- STP installation continues throughout this year



Slurry Treatment Plant



Barge movements this year... so far

70 barges removed

(**90,462** tonnes of spoil)

= 5,025 lorry movements

not necessary in and out
of Chambers Wharf



*Since 2017, we have avoided **13,234** lorry movements*

Shaft secondary lining and portal construction



Portals



Secondary lining is a second reinforced layer of concrete inside the shaft wall (slipform)

- **Concrete will be provided by the batching plant inside the acoustic enclosure**
- **Portal cages are pe-fabricated off site and delivered by barge**
- **24 hour / 5 day per week activity (enclosure doors closed from 6pm)**

Section 61 for Shaft Construction Phase

- Section 61 phase four covers anticipated construction work: June 2018 – October 2019
- Continuous base slab pour approved by LB Southwark
- **S61 for tunnelling works – draft submitted to Southwark**

Permitted Site Working Hours

Standard Working Hours: 08:00 to 18:00 (Monday to Friday) and 08:00 to 13:00 (Saturday)

Extended Working Hours

- 18:00 to 22:00 (Monday to Friday). 08:00 to 17:00 (Saturday)
- General works limited to tidally influenced marine movements, lighting (task specific) and gantry crane movements within shaft enclosure
- Phase 2 shaft excavation material movements

Continuous Working Hours (24/7)

- For steel fixing and base slab preparatory works, phase 2 shaft excavation (within enclosure) and secondary concrete lining construction.
- Base slab concrete pour – Friday to Saturday

Mobilisation and demobilisation Hours

- 07:00 to 08:00 and 18:00 to 19:00 (Monday to Friday). 07:00 to 08:00 and 13:00 to 14:00 (Saturday)
- 22:00 to 22:30 (Extended working hours activities) (Mon to Fri). 17:00 to 17:30 (Extended working on Saturdays)

S61 for tunnelling works – draft submitted to Southwark

This Section 61 covers:

Tunnel adits

- Tunnel adits will be the first sections of tunnel at the base of the shaft
- The first will be 30 metres long to launch our tunnel boring machine (TBM). The other adit will extend 16 metres and be the final destination of the TBM that arrives from Tideway's central section
- It will be gradually excavated while lining the adit with sprayed concrete
- Concrete supplied from our batching plant inside the acoustic enclosure

Tunnelling

- Set up and TBM arrival (pictured bottom right). The TBM will arrive by barge and lowered into the shaft for tunnelling
- This will be a continuous activity: 24 hours / 7 days a week, planned from early 2020
- The slurry treatment plant will also run continuously to support tunnelling activities



Pictured top right is an example of a tunnel adit being constructed



TBM 'Selina'

12-month draft look-ahead

Programme Overview	2019							2020					
	Jun	Jul	Aug	Sep	Oct	Nov	Dec	Jan	Feb	Mar	Apr	May	Jun
Main Shaft Excavation (24hr) Inside Enclosure													
Shaft Base Slab													
Shaft Secondary Lining and Portals													
SCL Tunnel Adits													
Tunnelling Set Up													
TBM Delivery													
Tunnelling													
Slurry Treatment Plant - Filterpress													
Erection of Slurry Treatment Plant													
Support Activities (Marine, Maintenance, etc,)													

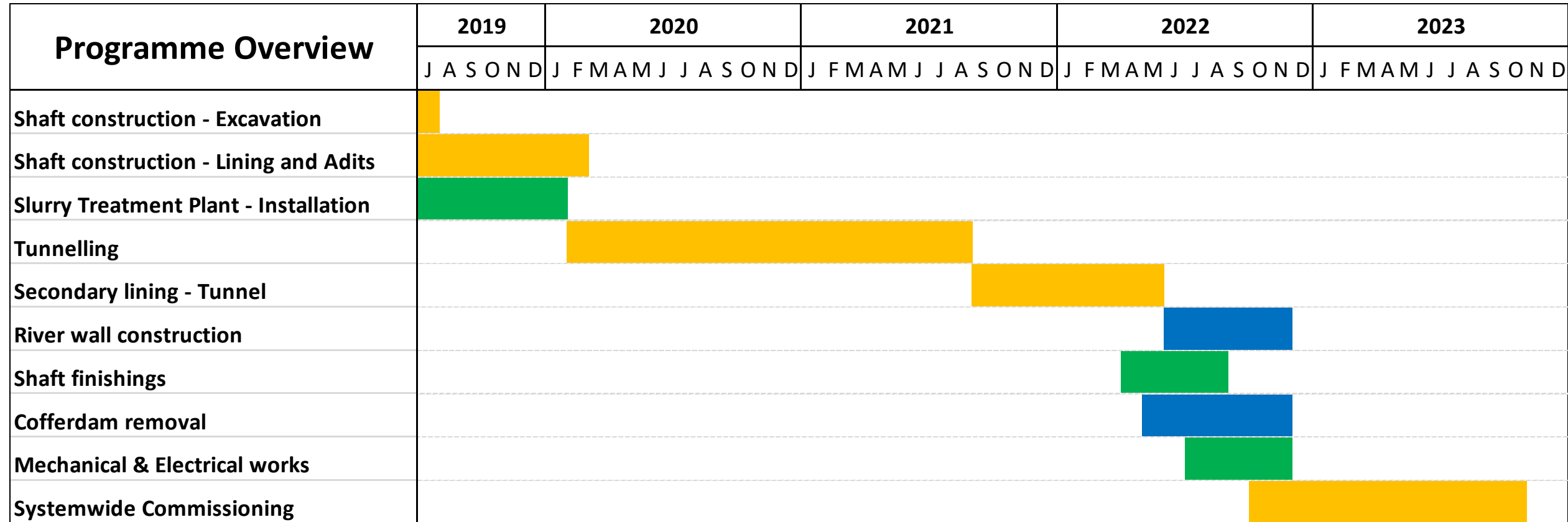
- Standard Working Hours

(08:00 - 18:00) Monday to Friday, (08:00 - 13:00) Saturday
- Extended Working Hours

(08:00 - 22:00) Monday to Friday - Support activities
- (08:00 - 13:00) Saturday - (Support activities to 17.00)
- Continuous Working Hours

(00:00 - 00:00) Monday to Sunday

Chambers Wharf Target Programme



Standard Working Hours	(08:00 - 18:00) Monday to Friday, (08:00 - 13:00) Saturday
Extended Working Hours	(08:00 - 22:00) Monday to Friday - Support activities
	(08:00 - 13:00) Saturday - (Support activities to 17.00)
Continuous Working Hours	(00:00 - 00:00) Monday to Sunday

Application for permanent designs

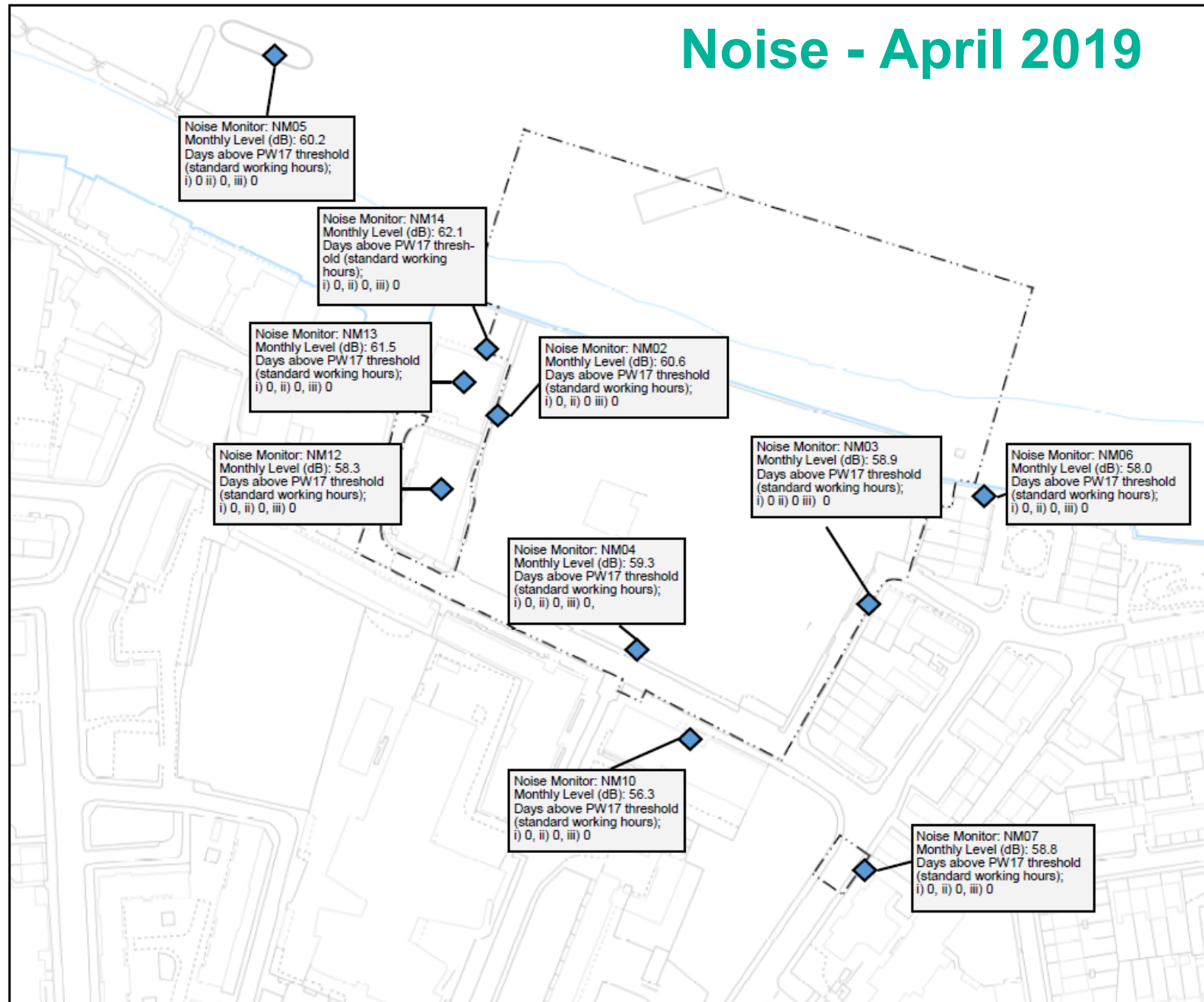
- River wall
- Ventilation columns, electrical, control kiosk and a stand alone piece of artwork

Applications for the approval of design details for the new river wall and ventilation columns, electrical, control kiosk and a stand alone piece of artwork, were submitted to the London Borough of Southwark.

CVB and LB Southwark are now in discussion following resident feedback.

Noise and Air Quality

Noise - April 2019



Key

- Limits of Land to be Acquired or Used
- Noise Monitor

Explanatory Note:

Days over PW17 thresholds during standard working hours.

This level should not be exceeded more than 10 times in 15 consecutive days or 40 times in any 6 months.

N.B. Houseboats have a lower trigger level of 65 dB. Schools have a trigger level 5 dB above either the baseline level (indoors or outdoors) or guidance, whichever is the higher.

i) - The number of days in the calendar month that have exceeded the daytime trigger level.

ii) - The highest number of days in a consecutive 15-day period that have exceeded the daytime trigger level.

iii) - The number of days in a 6-month period that have exceeded the daytime trigger level.

The 'Monthly Level' is the daily 10 hour average over the month.

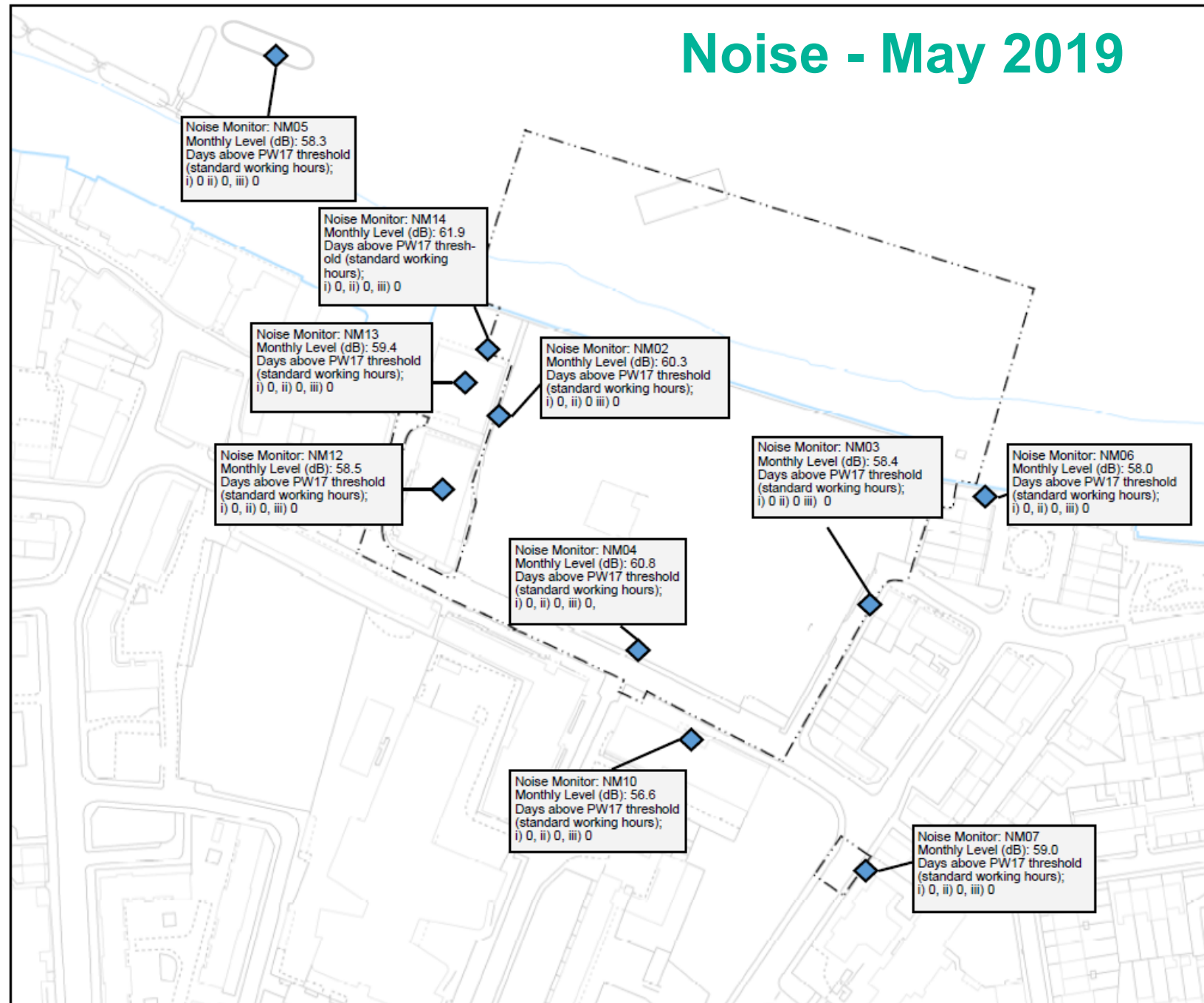
20 10 0 20m
For In- Scale 1 : 1,250 at A3

Location
Chambers Wharf
London Borough of Southwark

Document Information
Noise Monitoring

April 2019

Noise - May 2019



Key

- Limits of Land to be Acquired or Used
- ◆ Noise Monitor

Explanatory Note:

Days over PW17 thresholds during standard working hours.

This level should not be exceeded more than 10 times in 15 consecutive days or 40 times in any 6 months.

N.B. Houseboats have a lower trigger level of 65 dB. Schools have a trigger level 5 dB above either the baseline level (indoors or outdoors) or guidance, whichever is the higher.

i) - The number of days in the calendar month that have exceeded the daytime trigger level.

ii) - The highest number of days in a consecutive 15-day period that have exceeded the daytime trigger level.

iii) - The number of days in a 6-month period that have exceeded the daytime trigger level

The 'Monthly Level' is the daily 10 hour average over the month.

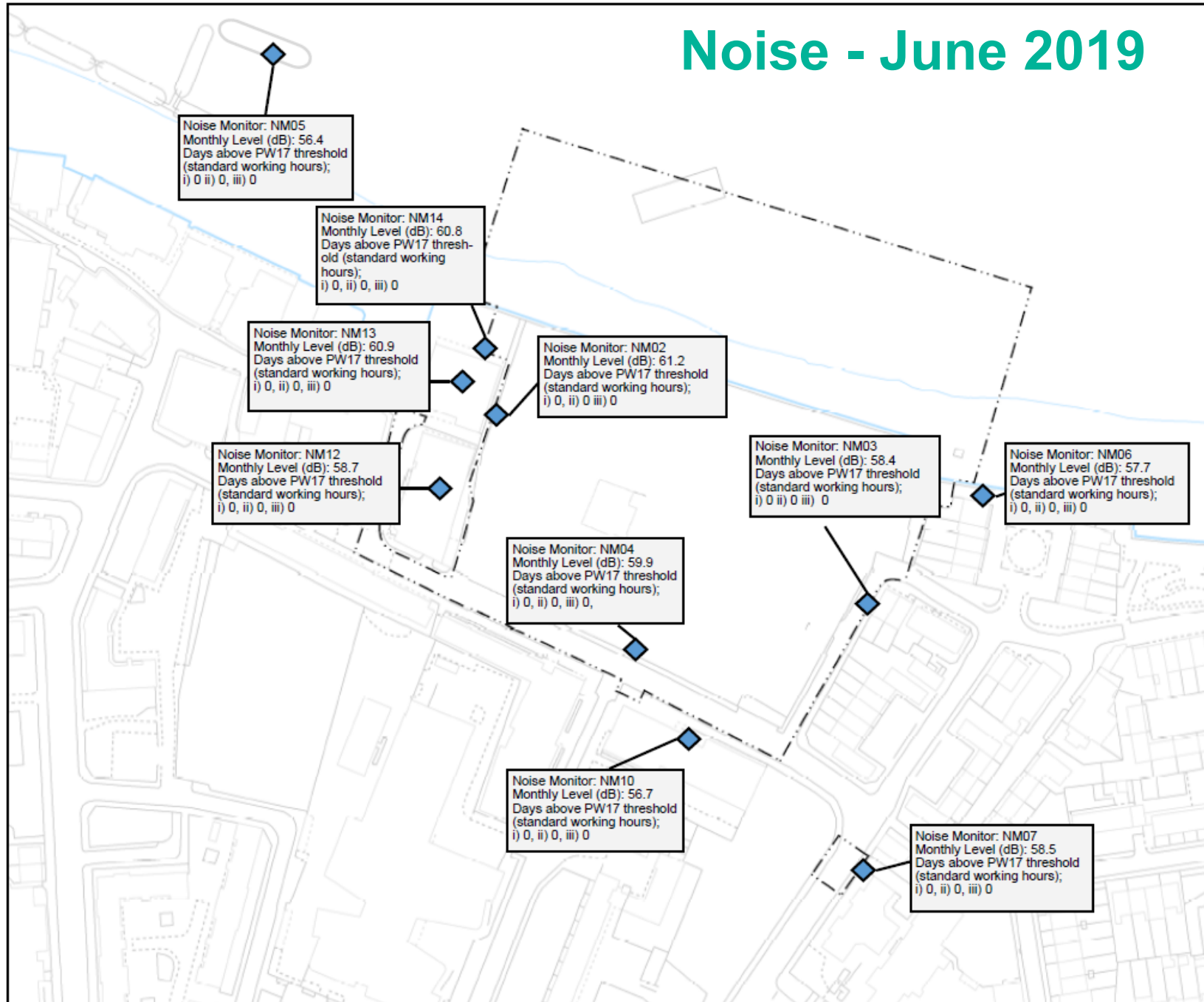
20 10 0 20m
For In- Scale 1 : 1,250 at A3

Location
Chambers Wharf
London Borough of Southwark
Document Information
Noise Monitoring

May 2019



Noise - June 2019



Keyplan



Key

- Limits of Land to be Acquired or Used
- ◆ Noise Monitor

Explanatory Note:

Days over PW17 thresholds during standard working hours.

This level should not be exceeded more than 10 times in 15 consecutive days or 40 times in any 6 months.

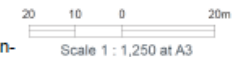
N.B. Houseboats have a lower trigger level of 65 dB. Schools have a trigger level 5 dB above either the baseline level (indoors or outdoors) or guidance, whichever is the higher.

i) - The number of days in the calendar month that have exceeded the daytime trigger level.

ii) - The highest number of days in a consecutive 15-day period that have exceeded the daytime trigger level.

iii) - The number of days in a 6-month period that have exceeded the daytime trigger level

The 'Monthly Level' is the daily 10 hour average over the month.



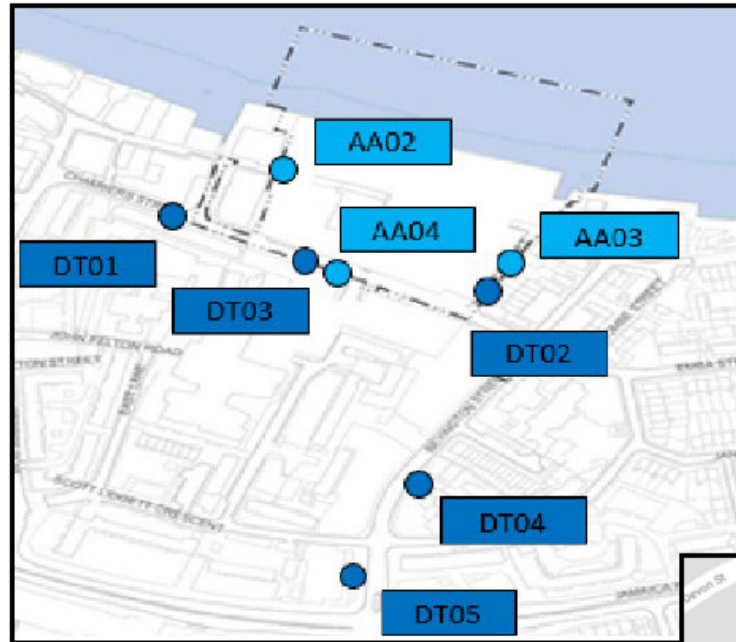
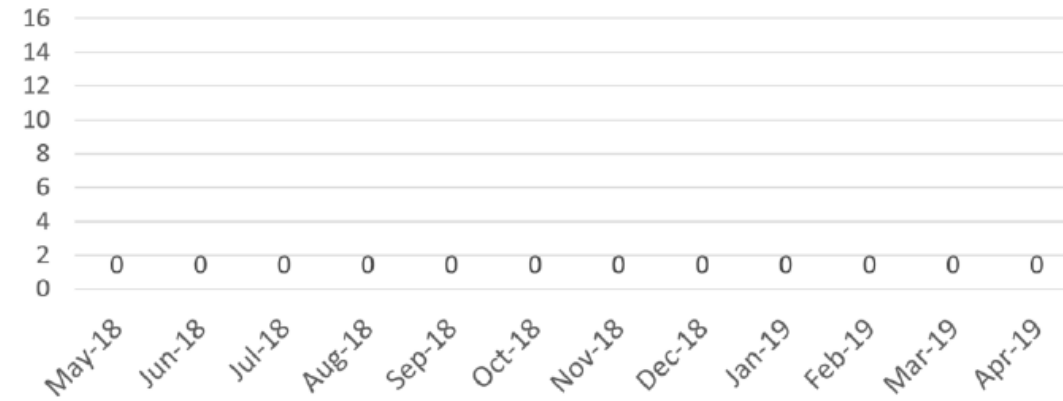
For In-

Location
Chambers Wharf
London Borough of Southwark
Document Information
Noise Monitoring

June 2019

Air Quality - April 2019

Air Alerts (24hour limit)

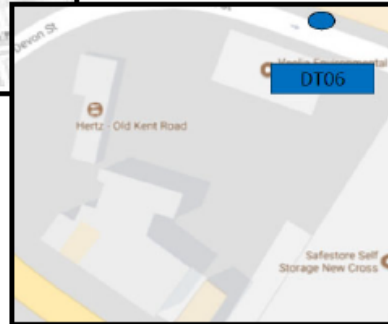
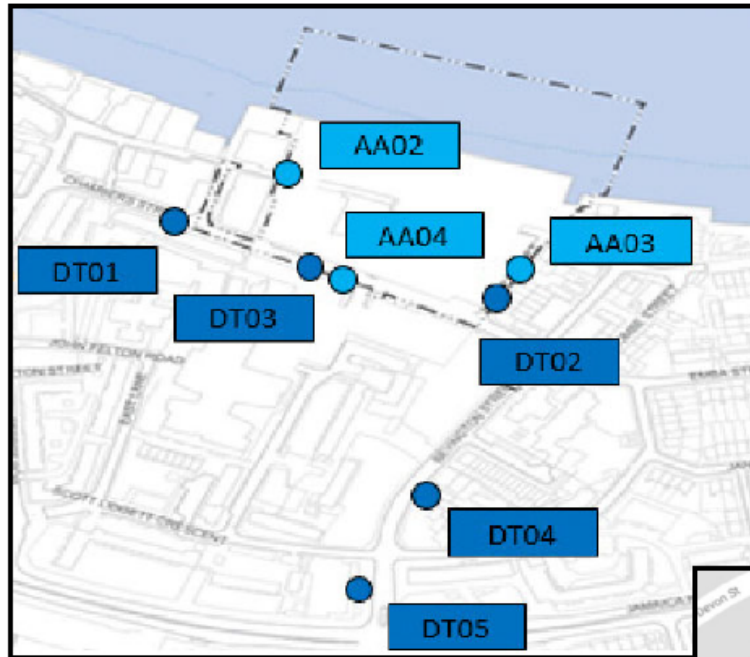


	TSP	PM10	PM2.5
Number of 24-hour mean PM10 alerts	-	0	-
Number of 15-min PM10 alerts	-	0	-
Monthly mean	22.11	14.84	8.89
Annual mean Air Quality Objective	-	40	25
Data Capture	98	98	98

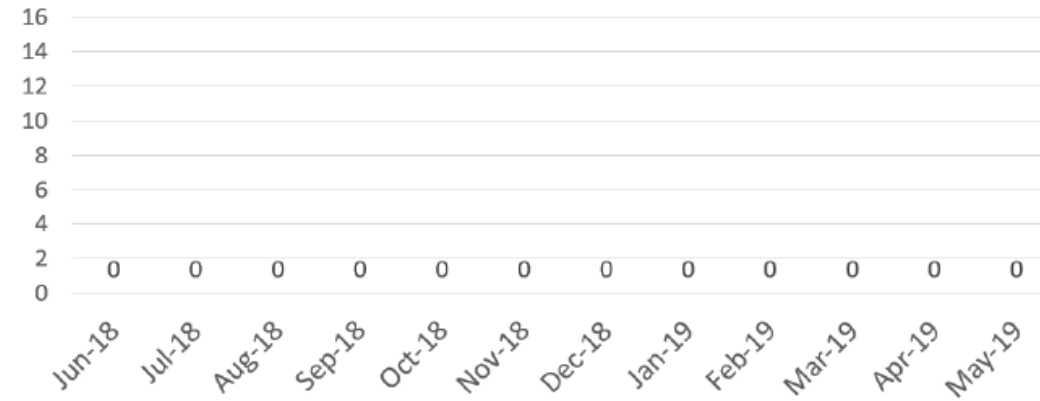
There were no 24 hour dust alerts during April 2019

Total Allowable Alerts	35 per year
Total April Alerts	0
Number of Alerts (12-month rolling)	0

Air Quality - May 2019



Air Alerts (24hour limit)

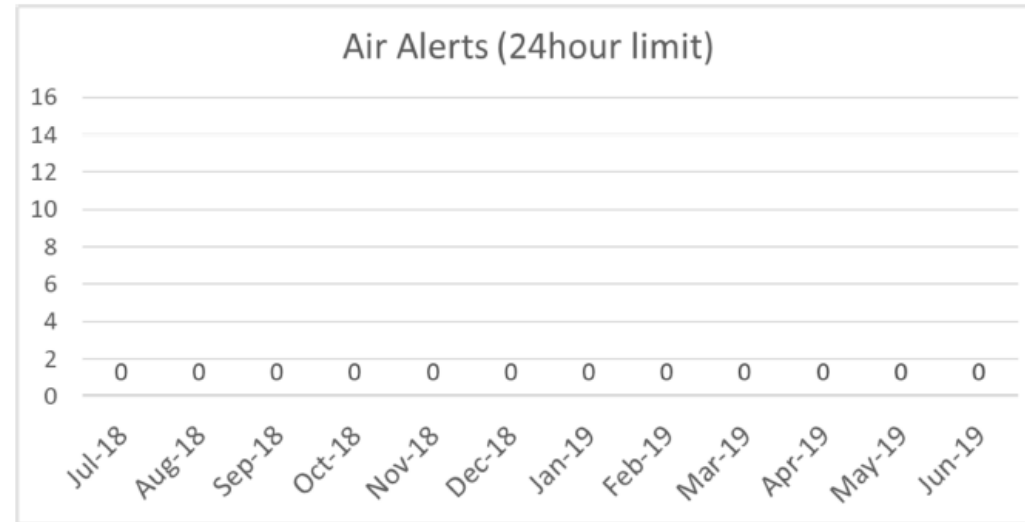
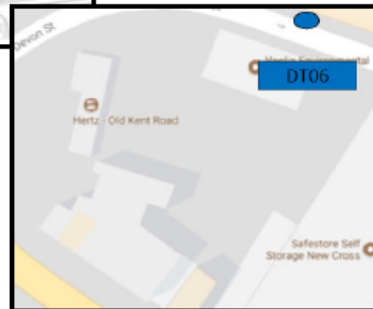
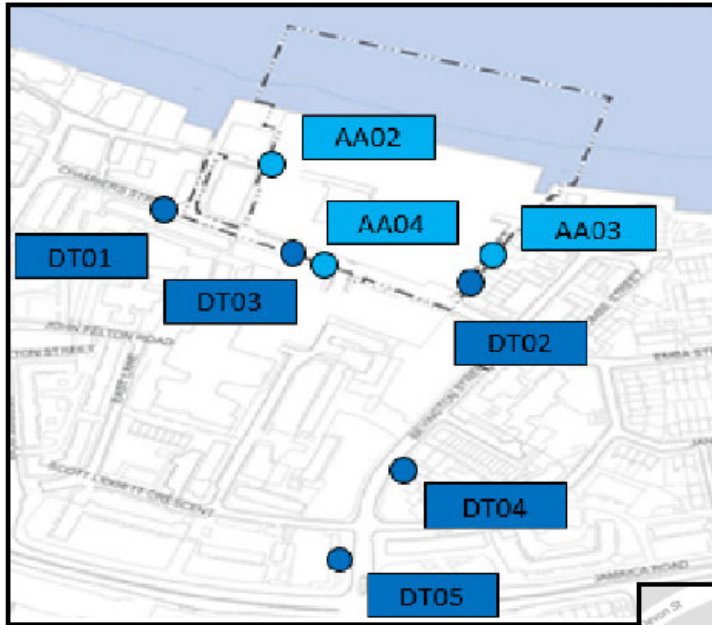


	TSP	PM10	PM2.5
Number of 24-hour mean PM10 alerts	-	0	-
Number of 15-min PM10 alerts	-	0	-
Monthly mean	14.41	9.02	4.46
Annual mean Air Quality Objective	-	40	25
Data Capture	97.3	97.3	97.3

There were no 24 hour dust alerts during May 2019

Total Allowable Alerts	35 per year
Total May Alerts	0
Number of Alerts (12-month rolling)	0

Air Quality - June 2019



There were no 24 hour dust alerts during June 2019

Total Allowable Alerts	35 per year
Total June Alerts	0
Number of Alerts (12-month rolling)	0

If you have any questions or enquiries please contact the Tideway Helpdesk:

Telephone: 0800 030 80 80

Email: Helpdesk@Tideway.London