

# INFORMATION SHEET

2120-TDWAY-CHAWF-150-ZZ-CO-700043  
August 2019



## CONSTRUCTION UPDATE FROM CHAMBERS WHARF

### SHAFT PORTAL CONSTRUCTION

Since completing the shaft's base slab, we have started works to form the tunnel portals. These will be the openings at the bottom of the shaft walls through which the tunnelling machine will pass.

We have started installing steel reinforcement cages and formwork at the bottom of the shaft to build the portals, before they are concreted. Formwork is the temporary structure into which concrete is poured.

Portal construction will continue for the next couple of months.

### SHAFT SECONDARY LINING

Once the portals are complete, we will then move on to lining the shaft's internal wall with a final layer of concrete. This is called the secondary lining.

We have started constructing the formwork for the secondary lining. This is particularly unique as it will sit inside the full curved perimeter of the 25m diameter shaft. As the concrete for the secondary lining is poured, the formwork will be raised gradually until complete.

Secondary lining installation is planned to begin from October.

Concrete for the portals and secondary lining will be supplied from the batching plant inside the acoustic enclosure.

The above works will take place inside the acoustic enclosure, continuing throughout the night, Monday to Friday, with the enclosure's doors closed from 6.00 pm. There may also be a few occasions where we have an evening delivery of cement whilst concreting the portals.

Outside of the acoustic enclosure, we continue to install the water and slurry treatment plant, which will be used to separate the material excavated during tunnelling, before it is taken away from site by barge.

Please see overleaf for more information, including a recent photo taken inside the shaft.

**24 HOUR HELPDESK 08000 30 80 80**

helpdesk@tideway.london | Freepost TIDEWAY  
www.tideway.london

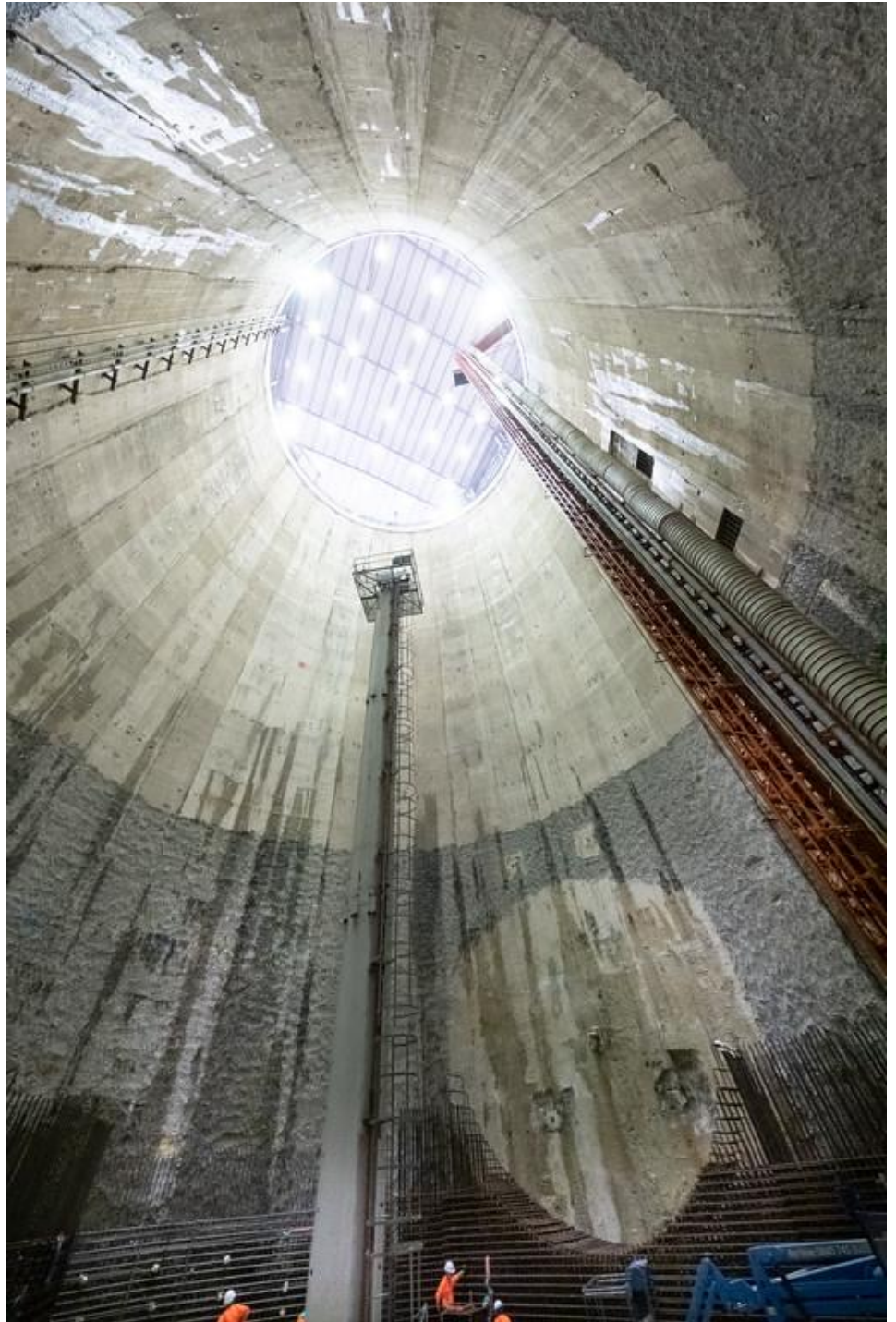


This photo was taken from the bottom of the shaft looking up.

In the bottom right corner, you can see a circle outlining the location of one of the portals, with the reinforcement steel cages being fixed below.

The shaft is 60 metres deep and will be the future connection to the Tideway tunnel.

Next year, we will lower our tunnel boring machine to begin tunnelling.



## KEY INFO

### WORKING HOURS

- Normal: Monday to Friday: 08:00 – 18:00, Saturday 08:00 – 13:00
- Continuous working inside the acoustic enclosure; doors closed 18:00 – 07:00
- Barge related activities; Monday to Friday up to 22:00
- Up to one hour start up and shut down periods are also permitted

### WHAT TO EXPECT

- Works throughout the night inside the acoustic enclosure
- Continued installation of the slurry treatment plant

### WHAT WE WILL DO

- Continue to use best practice for our construction activities and monitor noise and dust levels
- Hold Community Liaison Working Group meetings

**24 HOUR HELPDESK** 08000 30 80 80

helpdesk@tideway.london | Freepost TIDEWAY  
www.tideway.london

   @TidewayLondon