



Tideway

Deptford Church Street & Greenwich Pumping Station

Community Liaison Working Group

Thursday 12 September 2019

STAFF

Tideway

- Andy Sefton, Senior Project Manager Greenwich
- Darren Kehoe, Project Manager Greenwich
- Anil Dhillon, Project Manager Deptford

CVB – main works contractor

- Adam Flory, Greenwich Site Agent
- George Vernon-Hunt, Environmental Advisor
- Sophie Hart, Environmental Advisor
- Martin Griffiths, Senior Community Relations Manager

CONTENTS

Deptford

- Works update
- Looking ahead
- Noise and vibration

Greenwich

- Works update
- Looking ahead
- Noise and vibration

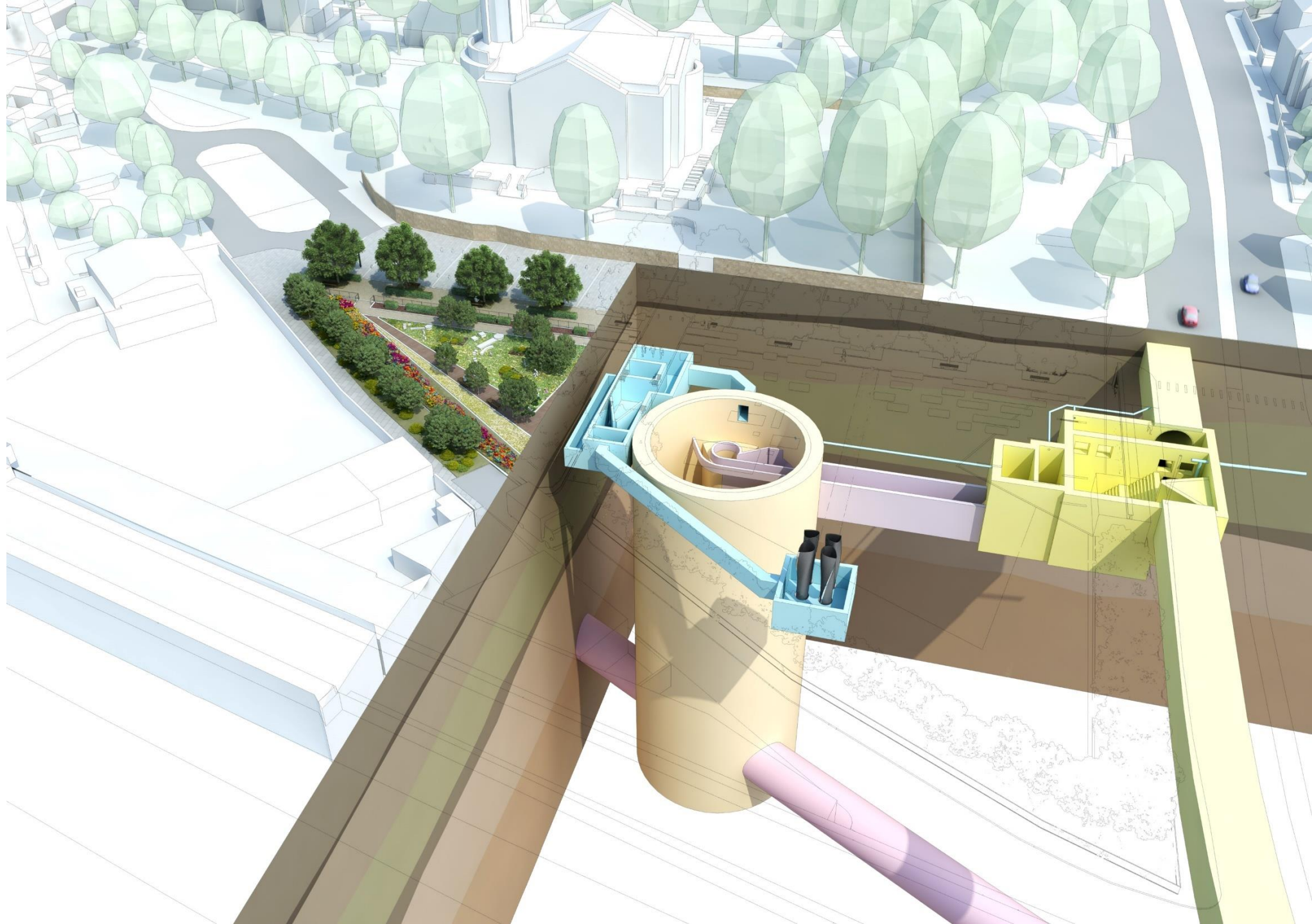
Legacy

DEPTFORD CHURCH STREET

June 2019



**What
we're
building**



Deptford works update

Shaft

- Excavated to 50 metres deep, completed in June
- Finished repairs on a section of one of the shaft wall panels, replacing poor areas of concrete.
- The base slab is being concreted today, once complete, it will be 3 metres deep and 18 metres in diameter

Interception Chamber

- The walls and the roof beams to the chamber are now complete, excavation started this month

SHAFT



INTERCEPTION CHAMBER



Deptford look ahead

Programme Overview	2019 - 2020			
	Sept	Oct	Nov	Dec
Shaft				
Base slab				
Portals				
Interception Chamber				
Excavation				
Base slab				
Secondary lining				

 Standard working hours; 08:00 - 18:00 Monday to Friday, 08:00 - 13:00 on Saturdays

 Extended working hours; up to 22:00 Monday to Friday, up to 17:00 on Saturdays

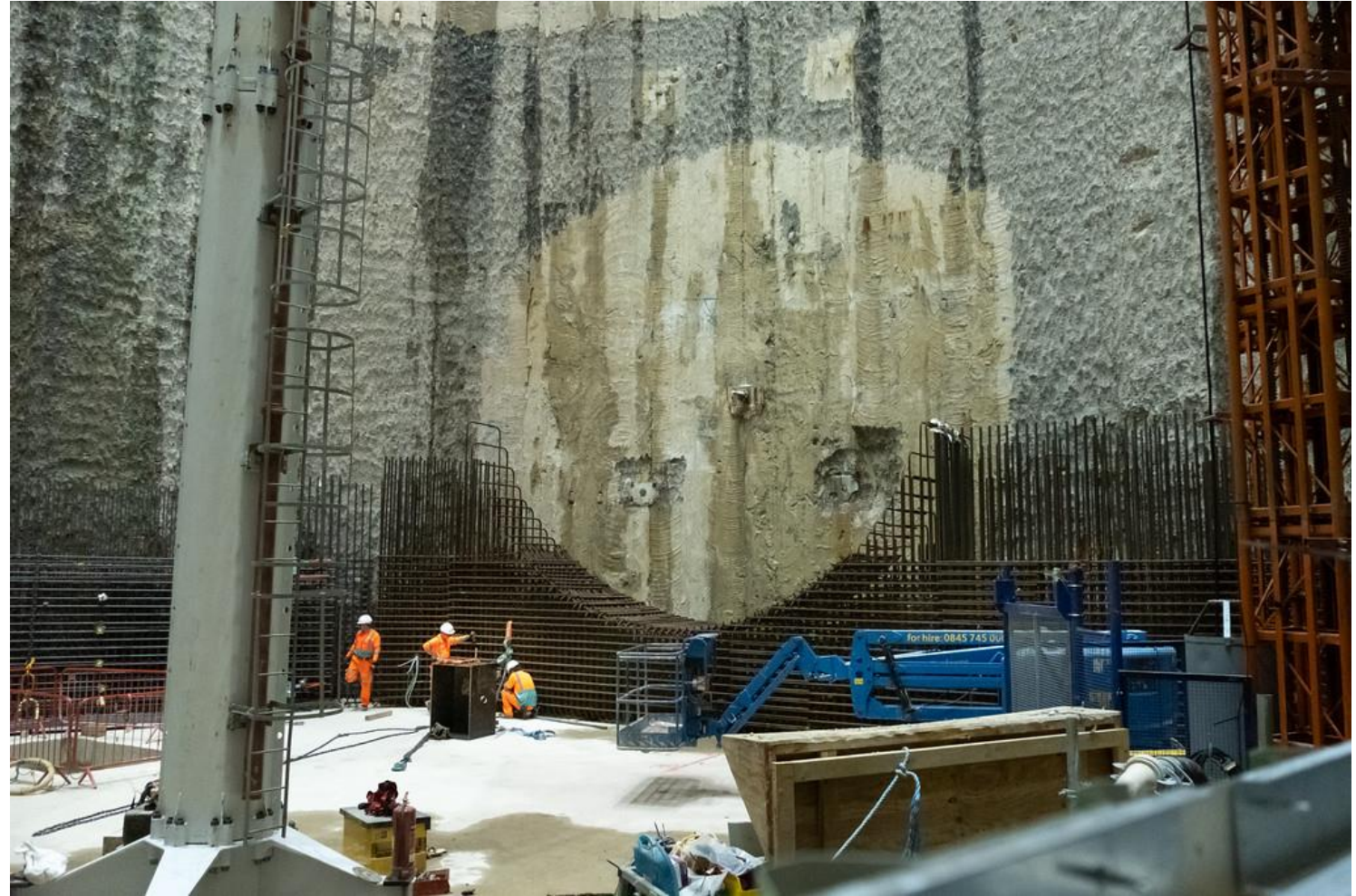
Up to 1 hour allowed before & after for mobilization / demobilisation

Shaft portals



Construction of portals

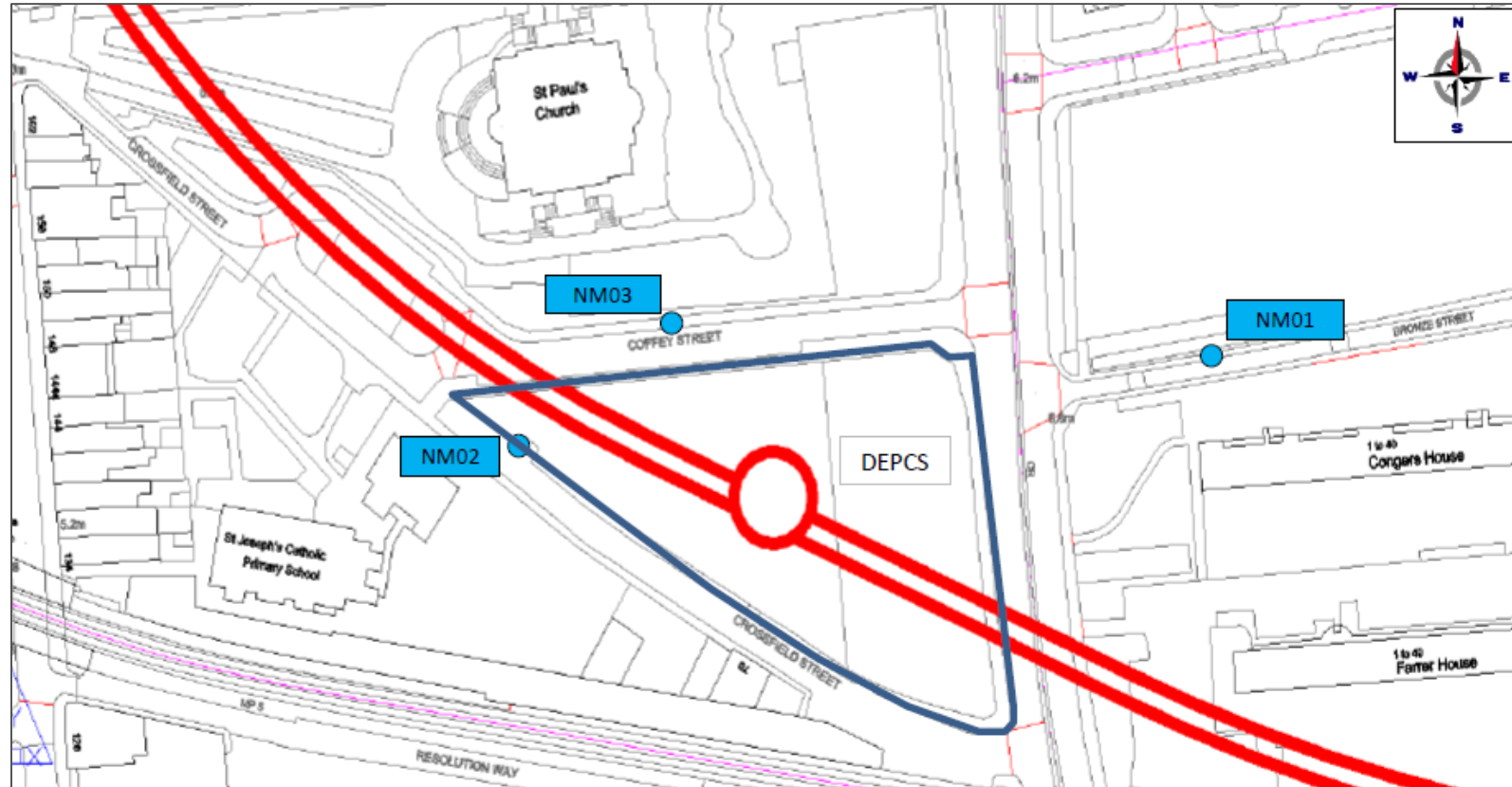
- These will be the openings at the bottom of the shaft walls through which the tunnelling machine will pass.
- We first install steel reinforcement cages and formwork at the bottom of the shaft to build the portals, before they are then concreted.
- They will be concreted on 3 occasions, when work may continue up to 22:00
- Portal construction will continue for the remainder of this year



Example of installing cages for a portal at our Bermondsey site

Noise

April - August 2019



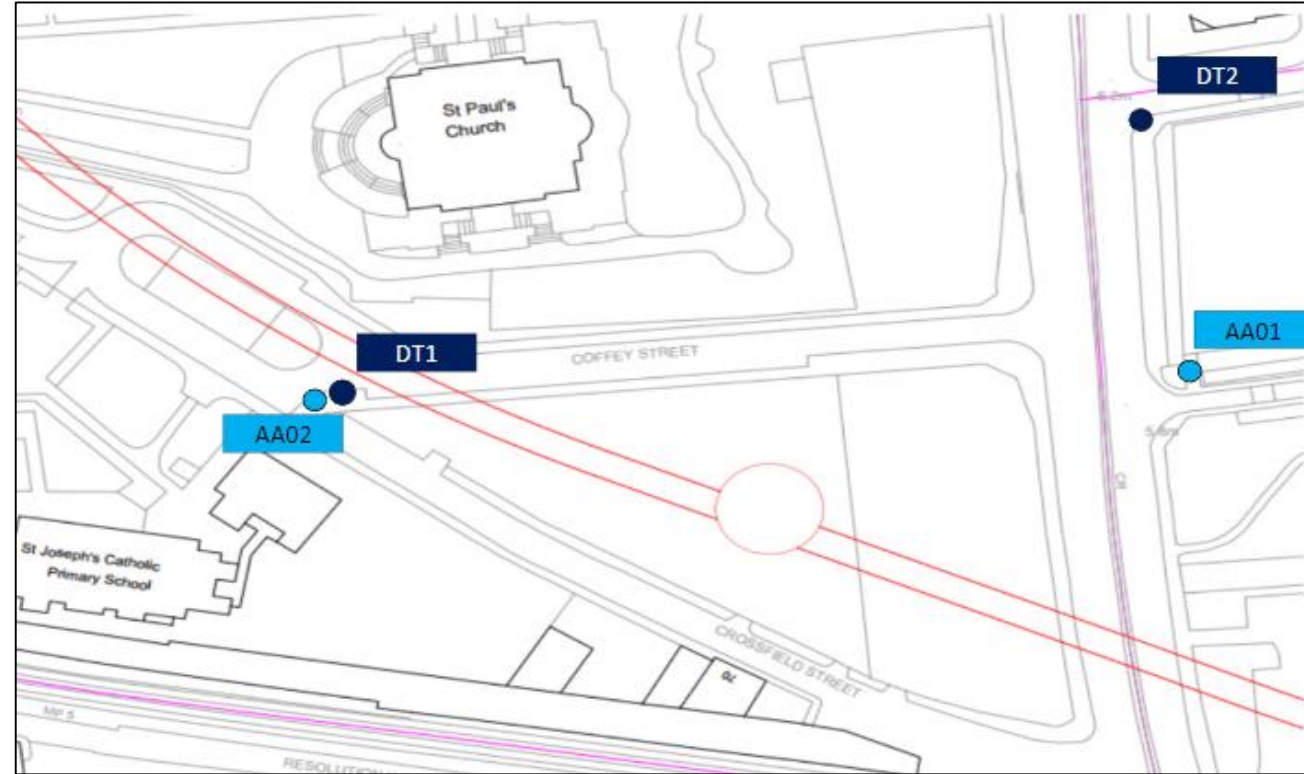
Noise monitoring locations

No Section 61 exceedances due to CVB works

Air Quality

- No exceedances for the 24hour PM10 Alert
- One Particulate Pollution Incident episode was reported by London Air Quality Network (LAQN) during the period April – August;
 - Monday 15th April 2019 to Tuesday 23rd April 2019 - moderate PM10 and PM2.5
- There were no other reported moderate or high particulate episodes recorded by the LAQN.
- From 1/4/2019 to 31/7/2019 diffusion tube results were below UK long-term Air Quality Objective annual average for NO₂ µg/m³

April to August 2019



Air Quality monitoring locations for particulate monitoring (PM10) (AA)
Passive NO₂ monitoring using diffusion tubes (DT)

DEPCS – Architectural visualisations (from Gate 4 design)



Continued





June 2019

GREENWICH PUMPING STATION

Greenwich works update

Shaft

- Excavated to 50 metres deep
- Currently building the base slab. Once complete, it will be 3 metres deep and 18.5 metres in diameter

Phoenix Wharf

- Continue to install slurry treatment plant (STP) – until late December
- The STP will be a water and soil treatment system formed of various buildings and tanks for treating the excavated material that is collected during tunnelling

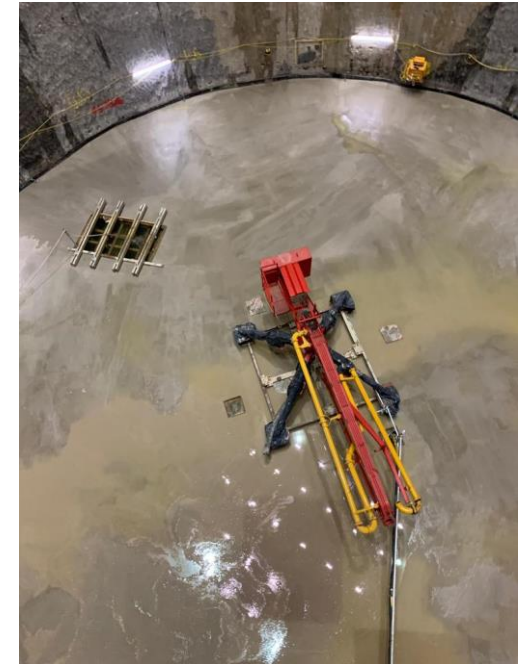
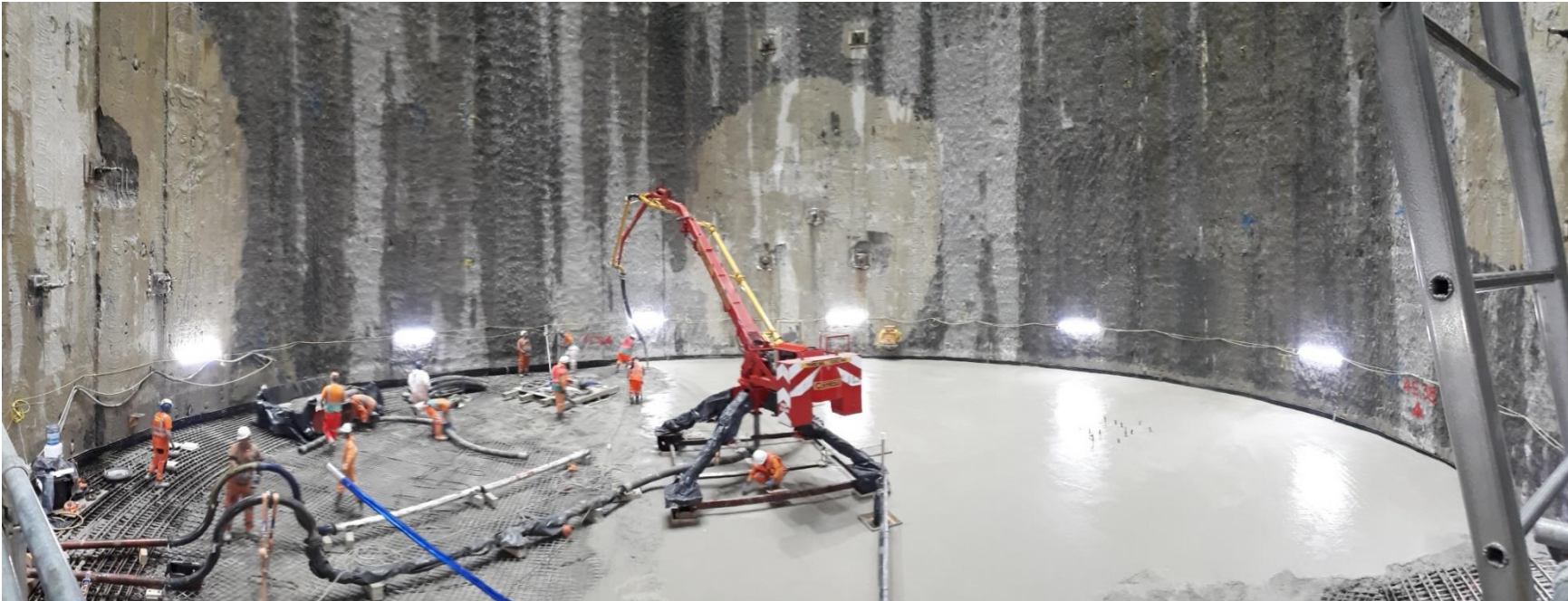
SHAFT WORKS

- Continuous working inside the acoustic enclosure
- 24-hours per day, Monday to Friday
- Doors closed from 18:00 (occasionally re-opened up to 22:00 for plant)



Shaft base slab pour

- The base slab is a reinforced concrete structure at the bottom of the shaft. Installing the reinforcement and shuttering will continue 24/5 inside the acoustic enclosure.
- Concrete for the base slab must be poured in one continuous operation to ensure a consistent quality, in order to keep out groundwater. This is planned for late September.
- Deliveries of concrete are anticipated up until 22:00 to complete the pour (acoustic enclosure doors also open until 22:00)



Example of a base slab being concreted and once complete

PHOENIX WHARF



Slurry treatment plant

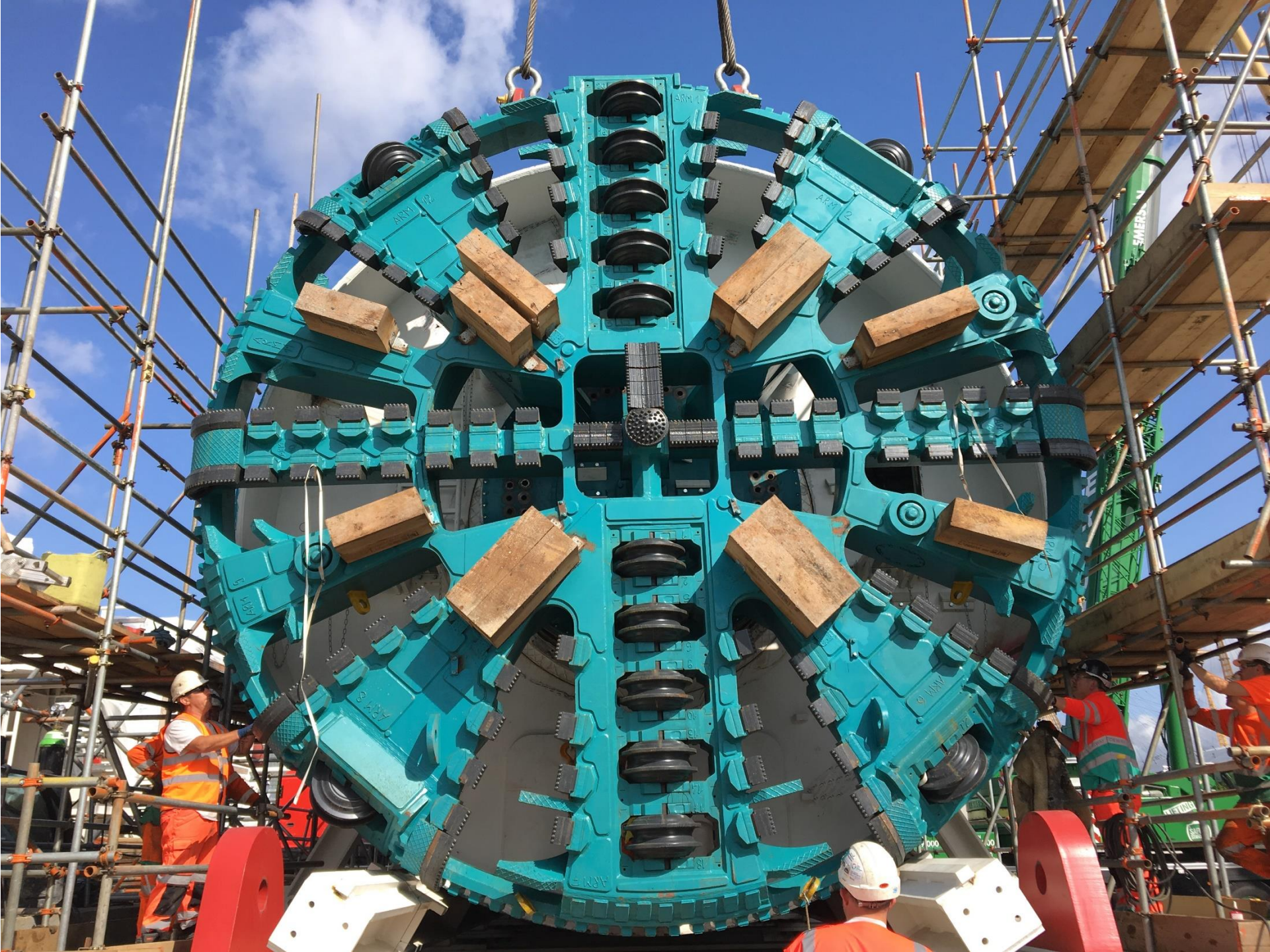
Deptford Creek



ANNIE AT VICTORIA DEEP

Tunnel Boring Machine (TBM)





Greenwich look ahead

Programme Overview	2019 - 2020				
	Sept	Oct	Nov	Dec	Jan
Main site					
Shaft base slab					
Tunnel adit					
Tunnel set-up					
TBM set up at Victoria Deep					
TBM delivery and lowering					
TBM set up in the shaft					
Phoenix Wharf					
Install slurry treatment plant					
Dredging Deptford Creek					

	Standard working hours; 08:00 - 18:00 Monday to Friday, 08:00 - 13:00 on Saturdays
	Extended working hours; up to 22:00 Monday to Friday, up to 17:00 on Saturdays
	Night working hours; 22:00 - 07:00 Monday to Sunday
	Continuous working hours (00:00 - 00:00) Monday to Friday

Up to 1 hour allowed before & after for mobilization / demobilisation

Next - tunnel adit

The tunnel adit will be the first 25 metres of the tunnel and where the tunnel boring machine is launched.

It will be constructed with gradual excavation whilst lining the adit with sprayed concrete.



Example of an adit being constructed

Delivery of the tunnel boring machine

In December, our TBM will travel by road from Victoria Deep to our Greenwich Pumping Station site, where it will be lowered to the bottom of the shaft.

It will travel at night when traffic flows are lowest.



Dredging in Deptford Creek

In January we will start to dredge part of Deptford Creek.

This will involve excavating and removing sediment and will take up to 12 weeks.

This is to support our tunnelling phase of works as 20% of the spoil we collect during tunnelling will leave site via barge.

Each 500 tonne barge will reduce 32 lorry movements to and from site.

These works are tidally affected and may continue into extended working hours, up to 22:00

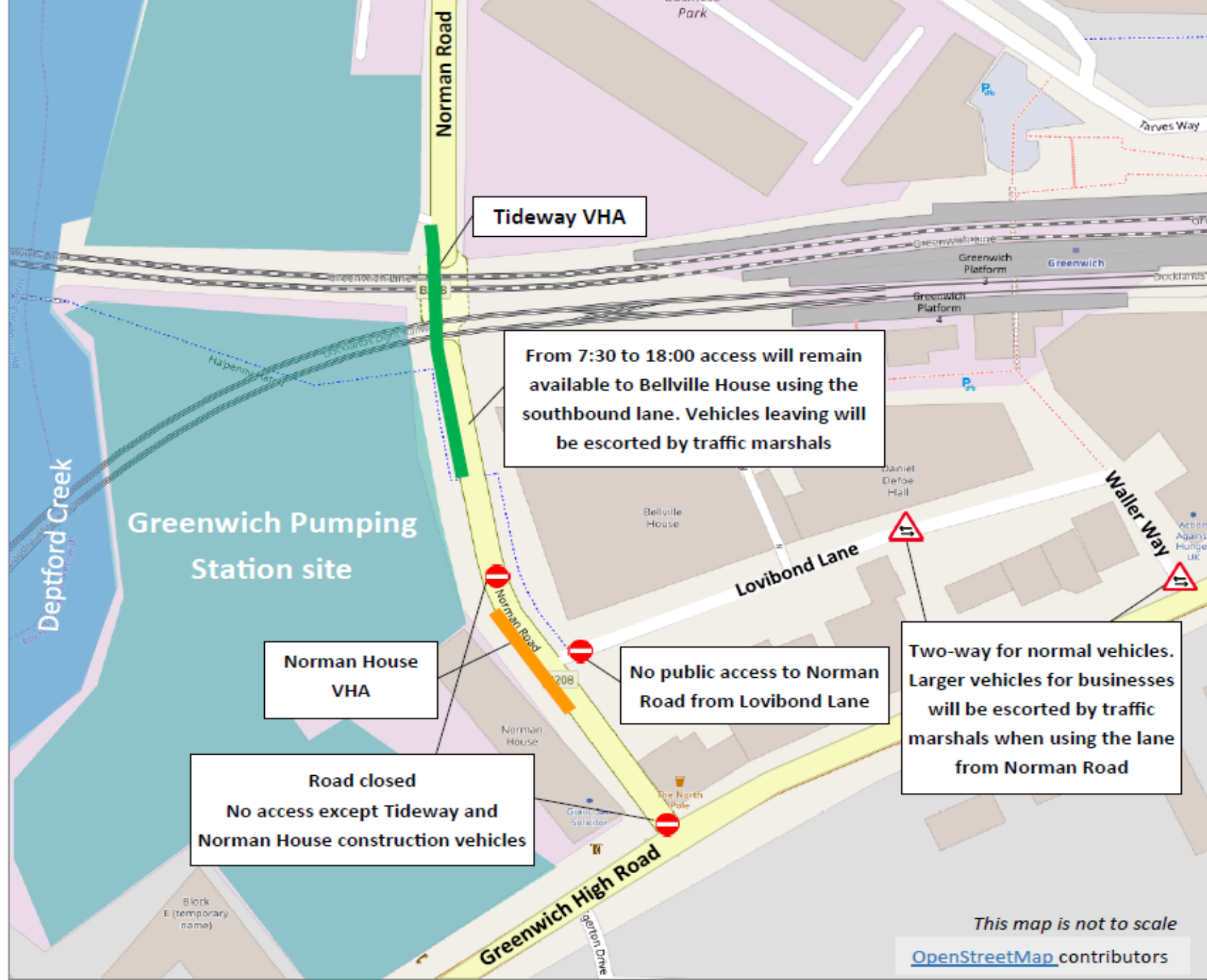


Example of dredging

Norman Road Closure for vehicle holding areas

- Part of Norman Road will be closed for public vehicle use, from Monday 23 September for around 18 months
- This is to support works at both the Tideway and Norman House development sites
- Closure on north and southbound lanes between Greenwich High Road and north of Lovibond Lane (access will remain available from Creek Road)
- Tideway VHA will be relocated
- Access will always be available to / from Bellville House from direction of Creek Road.
- During working hours, vehicles exiting Bellville House will be escorted by Tideway traffic marshals (heading north towards Creek Road)
- Cyclists and pedestrians not affected – cyclists diverted though Lovibond Lane
- Lovibond Lane will be two-way for traffic, allowing vehicles to enter and leave using Waller Way (via Greenwich High Road)
- Additional traffic marshals on Lovibond Lane during the opening and closing hours of the Bright Horizons nursery
- Booked rubbish collections will be escorted via Norman Road
- Traffic management changes will be implemented on Sunday 22 September (when traffic flows are lowest)

Map

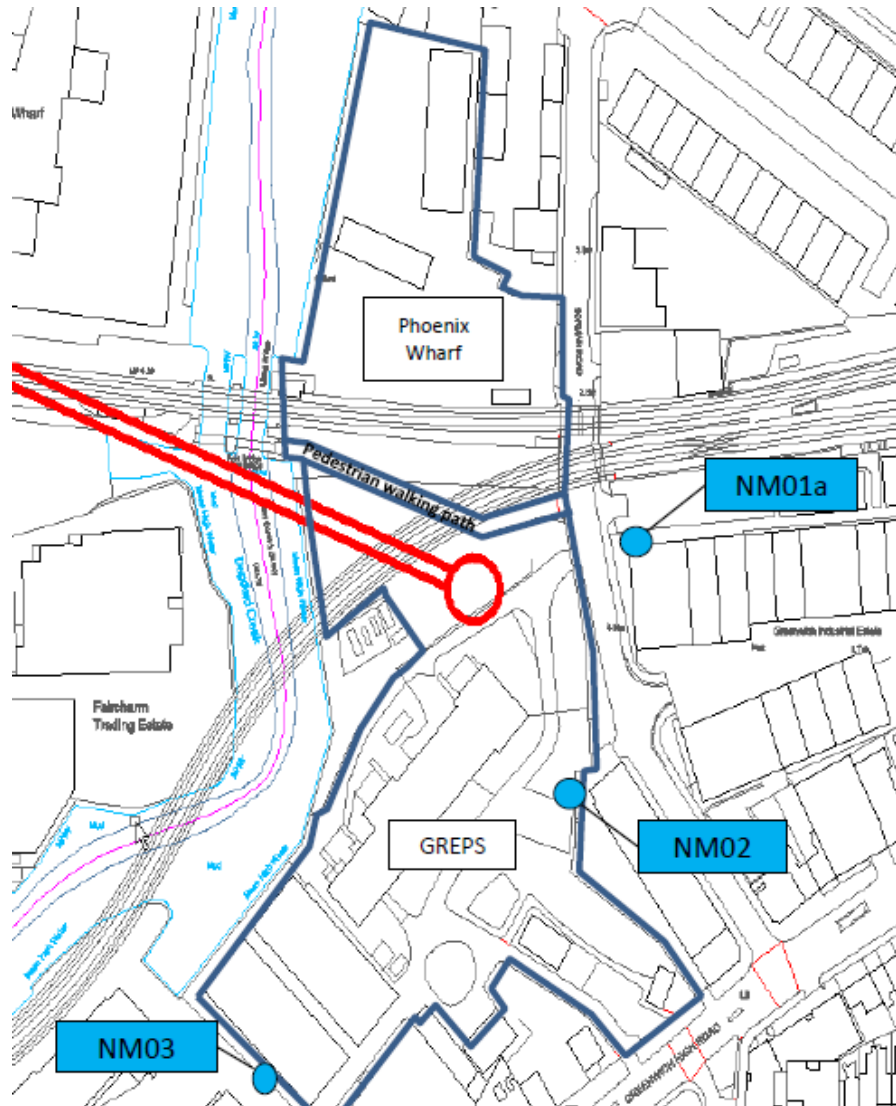


Background

- The VHA was designed in collaboration with Norman House to ensure that the construction of Norman House can continue, as well as the Tideway project for both the Greenwich and the Deptford Church Street sites (as the consented vehicle route from DEPCS is via Norman Road)
- The Tideway VHA application was not a planning application, but an application to discharge conditions from the consented Development Consent Order (DCO) – the Norman Road closure is needed to facilitate the Norman House development
- CVB talked to local businesses and representative of residents within Lovibond Lane to ensure that we can facilitate traffic and pedestrian needs on Lovibond Lane.
- When the application was submitted to the Royal Borough of Greenwich, they advertised the proposed application on their website, sent 537 notification letters to properties in Norman Road, Greenwich High Road and the area, with site notices also posted on Lovibond Lane and Norman Road.
- We also attended two council planning committees for our original VHA application for shaft works, where we listened to what the Councillors and concerned residents said, which led to our putting the VHA on Norman Road.

Noise

April to August 2019



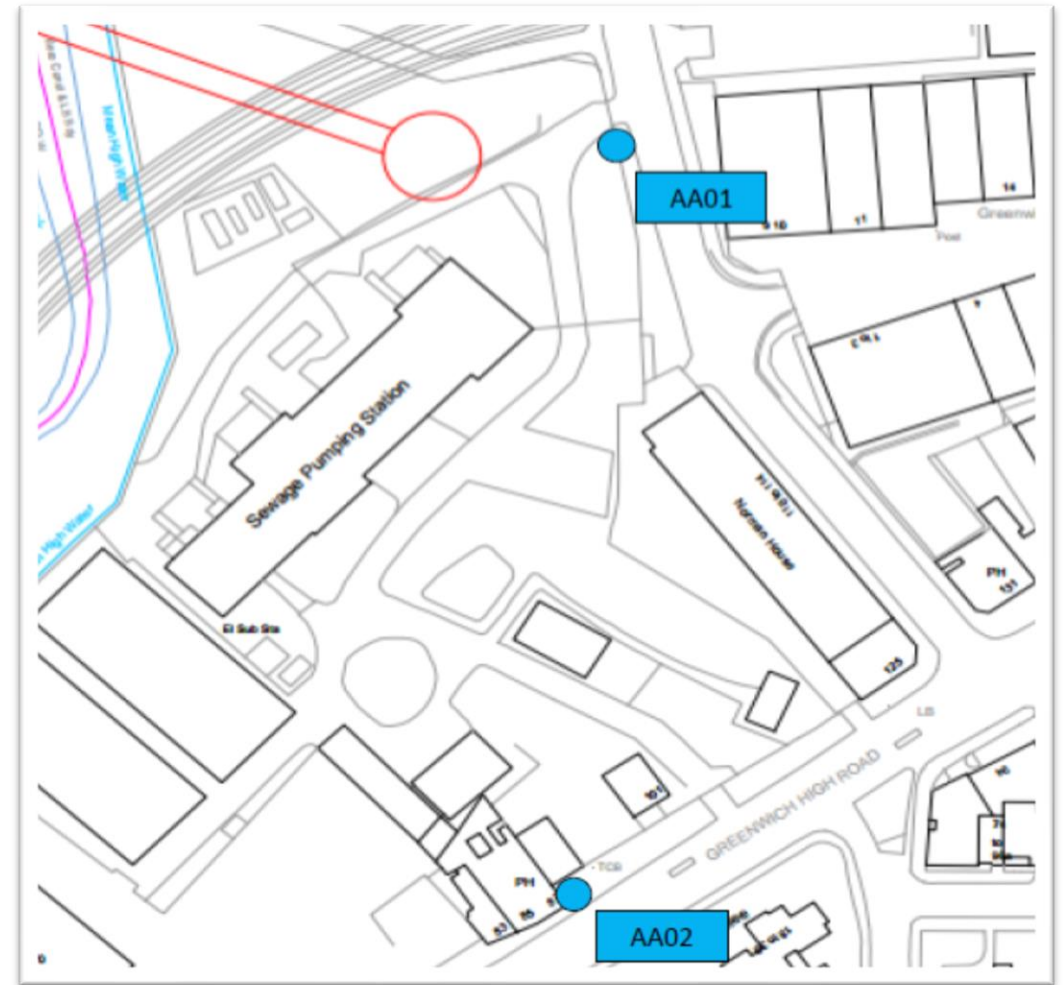
Noise monitoring locations

- No Section 61 exceedances due to CVB works
- NM02 was removed in April as the receptor 'Norman House' has been demolished

Air Quality

- No exceedances for the 24hour PM10 Alert
- As reported for DEPCS there was one Particulate Pollution Incident episode reported by London Air Quality Network (LAQN) during the period Apr - Aug
- There were no other reported moderate or high particulate episodes recorded by the LAQN for this period

April to August 2019



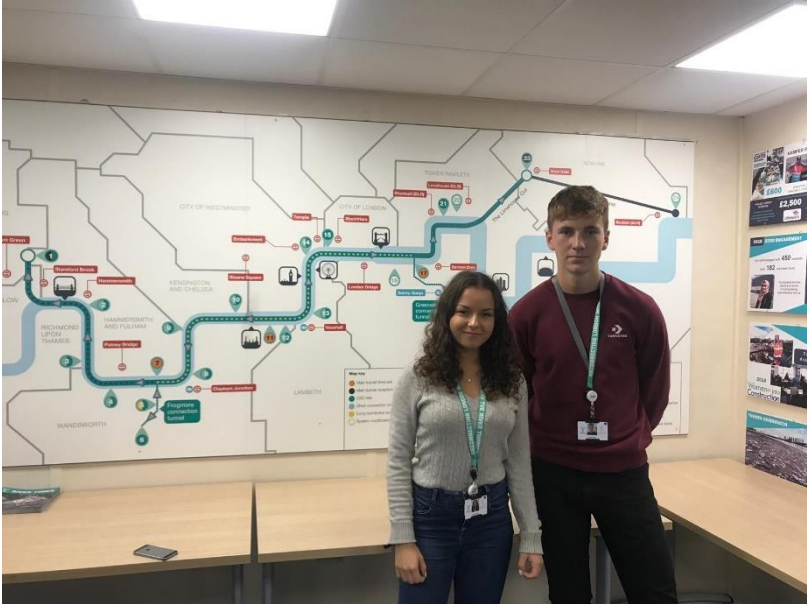
Air Quality monitoring locations for particulate monitoring (PM10)

Legacy

We attended Pride in July



Next Generation



Three new digital engineering apprentices have joined our team.



Another 12-week Breaking Barriers programme has started, which includes mentoring sessions and soft skills development, plus rowing



Our undergraduate civil engineering student summer placement said:

“Placements, like the one I was offered, give students a fantastic opportunity to experience the industry first hand.”



Taster into Construction

We ran our third course for the 999 Club, a small charity in Deptford providing advice, shelter, health checks & activities for homeless people in South London.

The sessions were led by staff volunteers and included manual handling training, health and safety familiarisation, interview skills and CV writing.



Making change count
for homeless people



Here's the group with staff at Chambers Wharf

Foreshore clean-ups

Two clean-ups this Summer, the first collecting data in North Greenwich and the second digging out plastic from the foreshore on the Isle of Dogs



Recent site visits

Vicky Foxcroft MP made her first visit to Deptford Church Street



Cllr. Danny Thorpe, Leader of Greenwich Council, had his 2nd visit to Greenwich Pumping Station



Helping our neighbours

A swan was recently spotted near our site gate being harassed by foxes

Our security team then escorted it into the protection of our security hut for the night

After dining on bread and water, the swan returned to Deptford Creek



Shadwell River Festival



**FREE
ADMISSION**

SUNDAY 29 SEPTEMBER
SHADWELL BASIN, E1W 3SG. 10AM-4.30PM

Join us for a free, family festival at Shadwell Basin to celebrate the River Thames.

The festival offers you the chance to try a range of sports taster sessions on the river, find out about and help your river ecosystem and explore hundreds of years of history buried in the river banks, plus more.





If you have any questions or enquiries please
contact the Tideway Helpdesk on:

Telephone: **08000 308080**

Email: Helpdesk@Tideway.London



For any enquires regarding the
operations and maintenance of the
pumping station, please call:

0800 316 9800