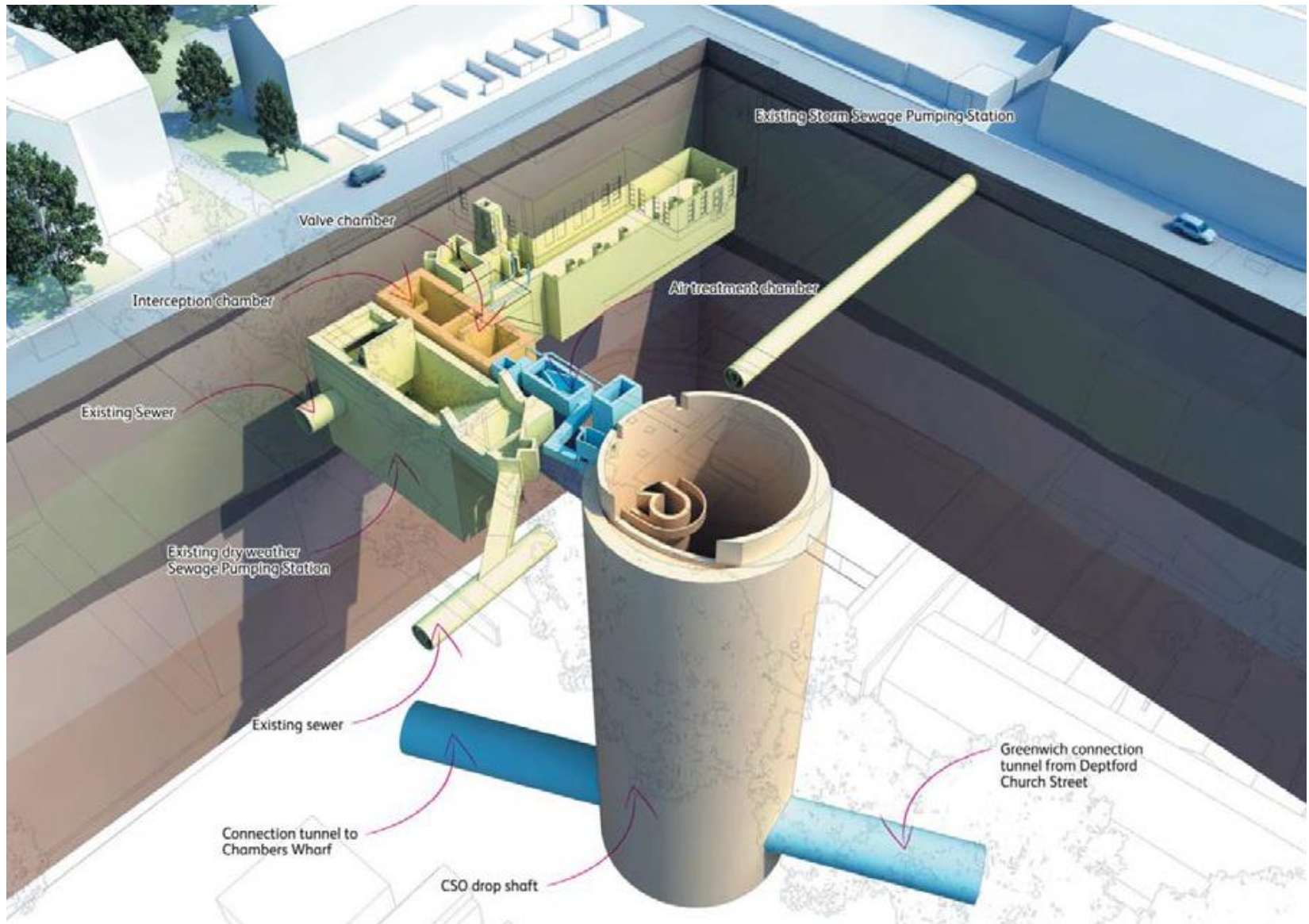




Tideway

**Earl Pumping Station
Community Liaison Working Group
Monday 23 September 2019**

What we're building



CONSTRUCTION UPDATE



Works update

Shaft

- Completed the capping beam
- Finished ground water testing
- Excavated the shaft to 8 metres
- Continue with ground remediation

Combine sewer outfall (CSO)

- Finished investigations

Other

- Installed a wheel wash for vehicles leave site



Shaft excavation

- Excavation consists of digging and removing spoil using excavators, whilst a crane lifts the material into the muck bin, before it is taken away from site
- Currently at 8 metres deep, continuing to a depth of 50 metres
- Periodic concrete breaking may be required
- We have permission to work up to 22:00, Monday to Friday (now that we are below 5 metres)



Odour Management

Whilst excavating, odour from ground conditions may become more noticeable

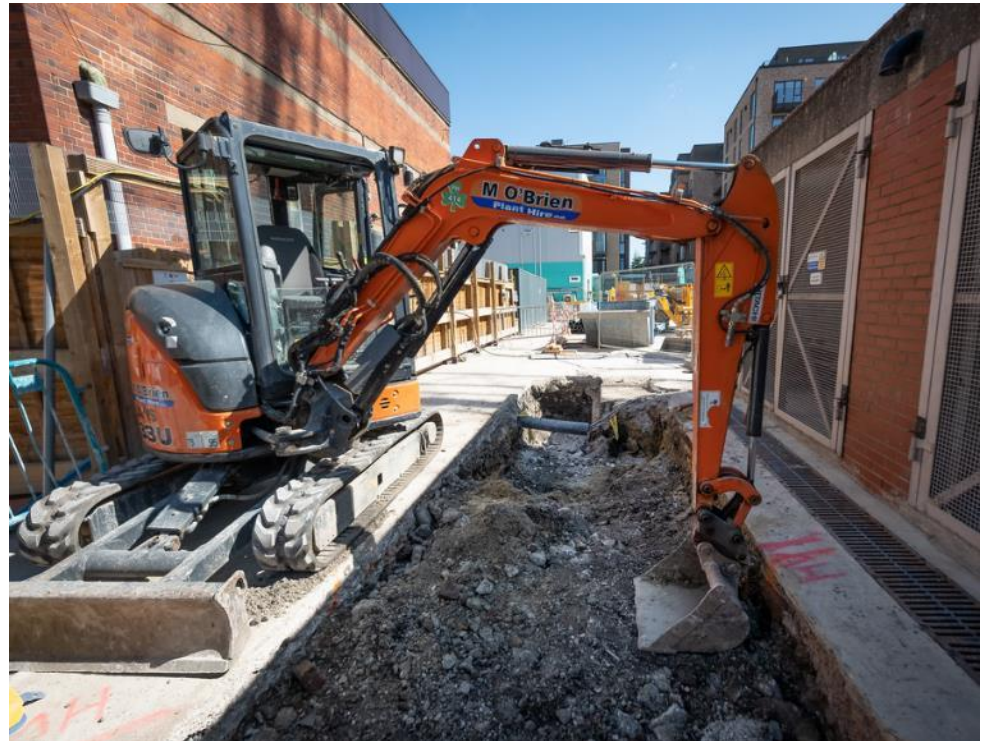
To minimise this:

- Odorous excavated material is covered and removed from site as soon as possible
- Daily assessments at the site boundary are undertaken
- Site personnel are trained to identify and deal effectively with odour sources
- We also have a misting system to de-odourise or mask odour when necessary





CSO

- We will be building a combined sewer outfall (CSO), which will connect our shaft (and tunnel) to the existing sewer network
- We have finished ground and asset investigations, ahead of construction
- Next we will start utility diversions and platform construction in this area of the site, with construction of the CSO planned in 2020



Programme

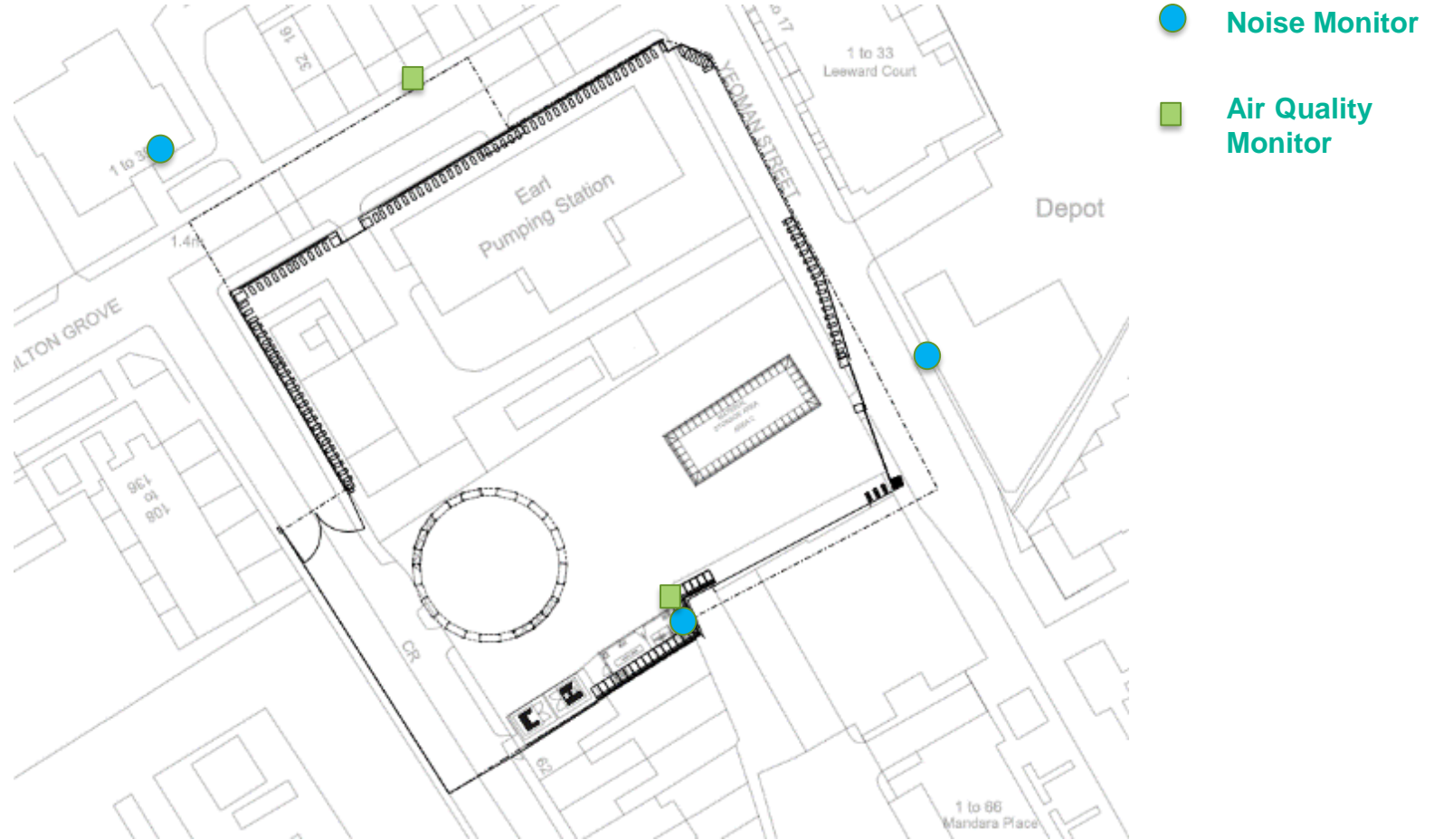
| Programme Overview | | | | | | | | | | | | |
|--|------|--|-----|--|-----|--|-----|--|-----|--|-----|-----|
| | Sept | | Oct | | Nov | | Dec | | Jan | | Feb | Mar |
| Shaft excavation (extended hours allowed now below 5 metres in depth) | | | | | | | | | | | | |
| CSO preparation works (utility diversion and platform construction) | | | | | | | | | | | | |
| Sewer / utility diversion around the shaft | | | | | | | | | | | | |
| Shaft base slab | | | | | | | | | | | | |

 (08:00 - 18:00) Monday to Friday, (08:00 - 13:00) Saturdays
 (08:00 - 22:00) Monday to Friday, (08:00 - 17:00) Saturdays

1 hour allowed before & after for mobilisation

ENVIRONMENT

Noise and Air Quality



| Month | Noise | Air Quality |
|-----------|-----------------|---------------------------------|
| | S61 Exceedances | 24h PM ₁₀ Exceedance |
| June 19 | 0 | 0 |
| July 19 | 1 | 0 |
| August 19 | 0 | 0 |

July exceedance related to extended concrete pour time for capping beam due to batching plant/traffic issues.

Legacy

We attended Pride in July



Next Generation



Three new digital engineering apprentices have joined our team



Another 12-week Breaking Barriers programme has started, which includes mentoring sessions and soft skills development, plus rowing



Our undergraduate civil engineering summer placement said:

“Placements, like the one I was offered, give students a fantastic opportunity to experience the industry first hand.”

Taster into Construction

We ran our third course for the 999 Club, a small charity in Deptford providing advice, shelter, health checks & activities for homeless people in South London.

The sessions were led by staff volunteers and included manual handling training, health and safety familiarisation, interview skills and CV writing.



Making change count
for homeless people

Foreshore clean-ups

Two clean-ups in the Summer, the first collecting data in North Greenwich and the second digging out plastic from the foreshore on the Isle of Dogs



Shadwell River Festival



**FREE
ADMISSION**

SUNDAY 29 SEPTEMBER
SHADWELL BASIN, E1W 3SG. 10AM-4.30PM

Join us for a free, family festival at Shadwell Basin to
celebrate the River Thames.

The festival offers you the chance to try a range of sports
taster sessions on the river, find out about and help your river
ecosystem and explore hundreds of years of history buried in
the river banks, plus more.



THANK YOU

**Any questions
please contact the Tideway Helpdesk on:**

Telephone: 08000 30 80 80

Email: Helpdesk@Tideway.London