

# INFORMATION SHEET

2120-TDWAY-EARPS-150-ZZ-CO-700009  
December 2019



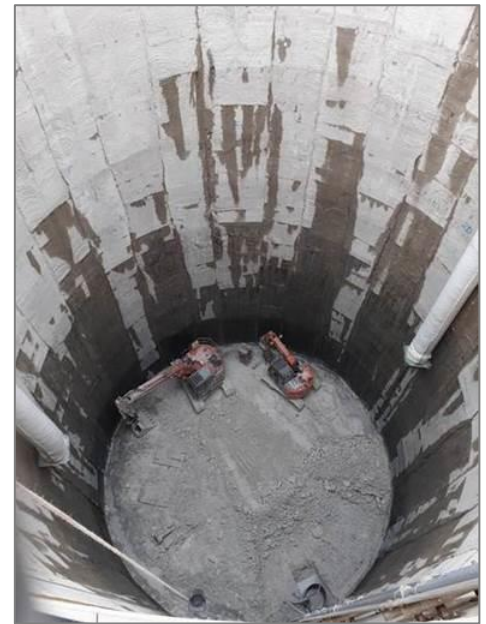
## EARL PUMPING STATION

### SHAFT WORKS

We are nearing the end of shaft excavation, having dug down to 47 metres deep. We will continue inside the shaft until we reach 50 metres.

In the New Year, once excavation is complete, we will move on to constructing the base slab, which will be a reinforced concrete structure at the bottom of the shaft.

Construction will consist of lowering material, including reinforcement steel cages, into the shaft, followed by concreting. Here's a recent photo looking into the shaft.



### UTILITY DIVERSIONS

Also in the New Year, we will start works to divert some underground utilities, including an existing sewer.

This will include some periodic concrete breaking to access the utilities.

Due to space constraints on site during the utility works, we will temporarily use both Yeoman Street and Croft Street as a vehicle entrance and exit, for around 3 months.

The site will be closed for Christmas from Friday 20 December until Monday 6 January 2020.

Wishing you a Merry Christmas and a Happy New Year.

*(Please continue overleaf...)*

## KEY INFO

### WORKING HOURS

- Normal: Monday to Friday: 08:00 – 18:00, Saturday 08:00 - 13:00
- Shaft works: up to 22:00 Monday to Friday and 17:00 on Saturdays
- Up to one hour start up and shut down periods permitted

### WHAT TO EXPECT

- Periodic concrete breaking from around late January 2020
- Continued use of Croft Street up to Chilton Grove junction

### WHAT WE WILL DO

- Continue to monitor noise and dust levels and use best practice to minimise any nuisance
- Reduce site lighting for evening works
- Hold regular Community Liaison Working Group meetings

**24 HOUR HELPDESK 08000 30 80 80**

helpdesk@tideway.london | Freepost TIDEWAY  
www.tideway.london



## CROFT STREET ROAD CLOSURE

We plan to continue using the full length of Croft Street adjacent to our site, specifically the smaller section towards the junction of Chilton Grove, which we have recently been using.

This will allow us to manage activities better on site, such as the nearby chamber works, whilst also allowing safer management of turning vehicles and reducing blind spots when pedestrians cross the road.

In the New Year we plan to replace the temporary fencing with hoarding (like the rest of the site boundary). We apologise for any inconvenience.

## OVERVIEW OF TIDEWAY WORKS

The shaft is an underground vertical access to facilitate the future connection to the Tideway tunnels and existing sewer systems. We are currently excavating the shaft, which consists of removing spoil using excavators until we get to a depth of 50 metres.

Next year, we will also start to build the underground interception chamber. This will be the future connection between the pumping station and the shaft, which will intercept and divert sewage overflows into the Tideway tunnel.

Below is a diagram of what we are building underground (shaft and interception chamber) at the Earl Pumping Station site.

The Tideway Greenwich connection tunnel will pass through the bottom of our shaft in around 12-months' time, built by tunnel boring machine 'Annie'.

The main construction works at the pumping station are due to finish in late 2022, followed by a year of testing and commissioning of the new assets and landscaping.

We provide construction updates via email, including details of our quarterly community meetings. You can receive these by contacting [getinvolved@tideway.london](mailto:getinvolved@tideway.london).

