

INFORMATION SHEET

2120-TDWAY-DEPCS-150-ZZ-CO-700017
December 2019



DEPTFORD CHURCH STREET CONSTRUCTION UPDATE

We are currently building the tunnel portals, which will be the two openings at the bottom of the shaft to connect to the Tideway tunnel.

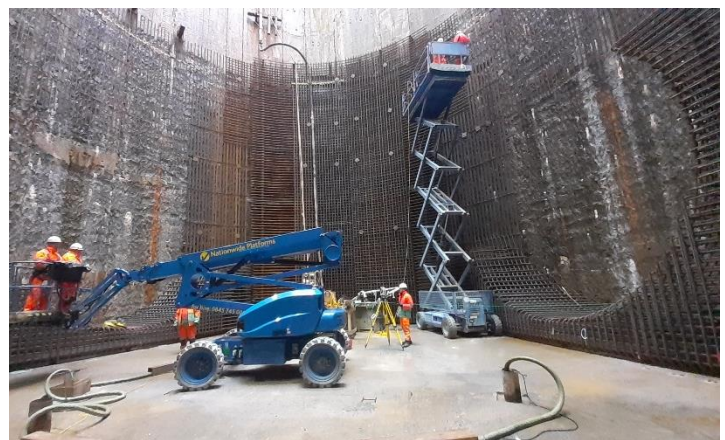
Here's a photo showing the reinforcement steel cages being installed, to the right you can see one of the circular portals being built.

In the New Year, we plan to concrete the portals. This will be done in three sections, taking one day each.

During this period we may be required to work on three Sundays, currently planned in January 2020.

The work would be limited, involving the use of a jet washer inside the shaft approximately 50 metres below ground level, between the hours of 08:00 and 18:00.

This activity is required after pouring a section of concrete, as the top layer needs preparation to ensure the next pour sets properly. It may be needed over the weekend as it must be done within the concrete curing stage which is between 1-3 days after the pour.



Please continue overleaf...

KEY INFO

WORKING HOURS

- Normal: Monday to Friday: 08:00 – 18:00, Saturday 08:00 - 13:00
- Shaft and chamber work: Monday to Friday up to 22:00 and up to 17:00 on Saturdays
- Up to one hour start up and shut down periods are also permitted

WHAT TO EXPECT

- Evening working inside the shaft and interception chamber
- Possible work on three Sundays in the New Year

WHAT WE WILL DO

- Continue to use best practice for our construction activities and monitor noise and dust levels
- Hold Community Liaison Working Group meetings

24 HOUR HELPDESK 08000 30 80 80

helpdesk@tideway.london | Freepost TIDEWAY
www.tideway.london

   @TidewayLondon

INTERCEPTION CHAMBER

We completed the base slab of the interception chamber last month and have now moved on to lining the internal walls with a second layer of concrete, called the secondary lining.

OVERVIEW OF TIDEWAY WORKS

The shaft is an underground vertical access to facilitate the future connection to the Tideway tunnels, whilst the interception chamber will connect to the existing sewer system (and shaft). Once complete, these assets will intercept and divert sewage overflows into the Tideway tunnel.

Below is a diagram of what we are building underground (shaft and interception chamber) at the Deptford Church Street site.

The Tideway Greenwich connection tunnel will pass through the bottom of our shaft in the Summer of 2020, built by tunnel boring machine 'Annie'.

To date, we have completed around 50% of the main construction works at this site.

We provide updates via email, including details of our quarterly community meetings and construction progress. You can receive these by contacting getinvolved@tideway.london.

The site will be closed for Christmas from Friday 20 December until Monday 6 January 2020. A 24-hour security presence will remain throughout this period.

Wishing you a Merry Christmas and a Happy New Year.

