

INFORMATION SHEET

2120-TDWAY-CHAWF-150-ZZ-CO-700044
December 2019



CHAMBERS WHARF

CONSTRUCTION UPDATE

The tunnel portals were completed in November. These are the openings at the bottom of the shaft walls through which the tunnelling machines will pass.

Since then, we have started pouring concrete for the shaft's secondary lining. This will be a new concrete wall within the internal diameter of the shaft.

In the New Year, we have a further concreting activity. This consists of filling the temporary gap between the new secondary lining and the outer wall (diaphragm wall).

A large amount of the concrete will be supplied from the batching plant inside the acoustic enclosure, although, when 'filling the gap' there will also be concrete deliveries by road in normal working hours. For overnight pouring, there may be occasional deliveries of cement required by road up to 10:00 pm.

NEXT YEAR - THE FIRST SECTION OF TUNNEL

We will then move on to building two tunnel chambers.

One will be the first 30 metres of tunnel to launch our tunnel boring machine (TBM) for tunnelling. The second will be the shaft's connection to the tunnel coming from the west.

All these works will take place inside the acoustic enclosure, continuing throughout the night, Monday to Friday, with the enclosure doors closed from 6.00 pm.

Outside of the acoustic enclosure, we continue to install the water and slurry treatment plant, which will be used to process excavated material during tunnelling before it leaves site by barge. These works will be finished early next year.

The site will be closed for Christmas from Tuesday 24 December until Thursday 2 January 2020. A 24-hour security presence will remain throughout this period.

Wishing you a Merry Christmas and a Happy New Year.

(Please continue overleaf...)

OVERVIEW OF TIDEWAY WORKS

The shaft is a 60-metre-deep underground access to facilitate the future connection to the Tideway tunnels.

Next year, our TBM 'Selina' will begin tunnelling at the bottom of the shaft, travelling to the Abbey Mills Pumping Station in Newham.

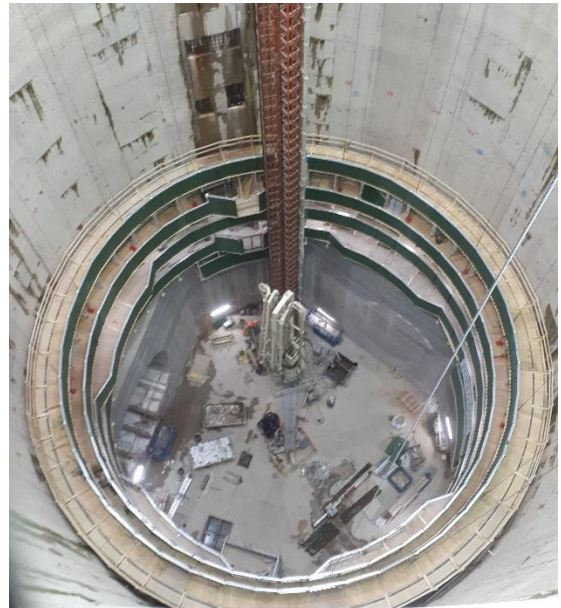
The shaft will also later receive two other TBMs. One from the tunnel coming from the west and the other for the Greenwich connection tunnel.

To date, we have completed around 50% of the main construction works at this site.

We provide updates via email, including details of our quarterly community meetings and construction progress. You can receive these by contacting getinvolved@tideway.london.



Here is one of the tunnel portals. These are the openings at the bottom of the shaft walls through which the tunnelling machine (TBM) will pass.



We have started pouring concrete for the shaft's secondary lining, which will be a new concrete wall within the curved perimeter of the shaft.

The formwork is the structure into which concrete will be poured. As we progress with concreting, the formwork is raised gradually until complete.

KEY INFO

WORKING HOURS

- Normal: Monday to Friday: 08:00 – 18:00, Saturday 08:00 – 13:00
- Continuous working inside the acoustic enclosure; doors closed 18:00 – 07:00
- Barge related activities; Monday to Friday up to 22:00
- Up to one hour start up and shut down periods are also permitted

WHAT TO EXPECT

- Works throughout the night inside the acoustic enclosure
- Continued installation of the slurry treatment plant

WHAT WE WILL DO

- Continue to use best practice for our construction activities and monitor noise and dust levels
- Hold Community Liaison Working Group meetings

24 HOUR HELPDESK 08000 30 80 80

helpdesk@tideway.london | Freepost TIDEWAY
www.tideway.london

   @TidewayLondon