



**Chambers Wharf  
Community Liaison Working Group  
Monday 27 January 2020**

# Legacy

## Charity

Observations and medical appointments triggered a CVB donation for 2019 to The Samaritans of £2,289.50

Brew Monday this week on our sites

## Apprenticeship Opportunities

CVB Tideway East are recruiting apprentices for September 2020.  
Applications remain open until 31 March.

To apply, click on the apprenticeship below to take you to the Costain website:

- [Level 6 Civil Engineer apprenticeship \(x1\)](#)
- [Level 3 Mechanical Engineer Apprenticeship \(x2\)](#)

# EAST COMMUNITY INVESTMENT & STEM

## October - December 2019

LONDON  
BOROUGHS  
WE'VE  
SUPPORTED

10



NUMBER OF HOURS VOLUNTEERED

454



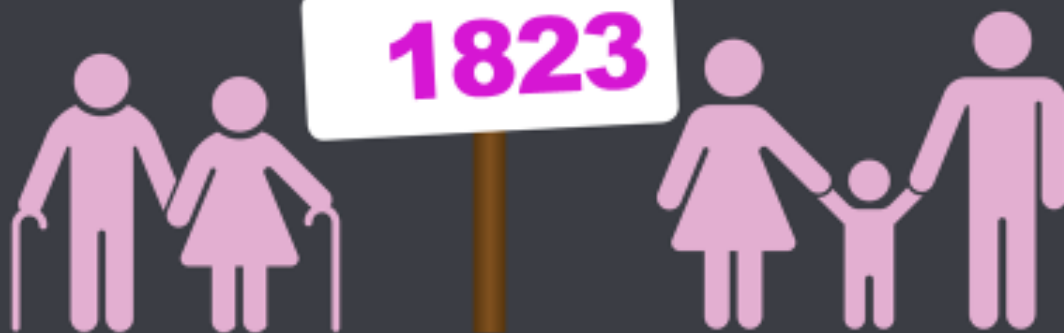
NUMBER OF PEOPLE VOLUNTEERED

150



NUMBER OF PEOPLE WE SUPPORTED

1823



ORGANISATIONS WE'VE HELPED

27

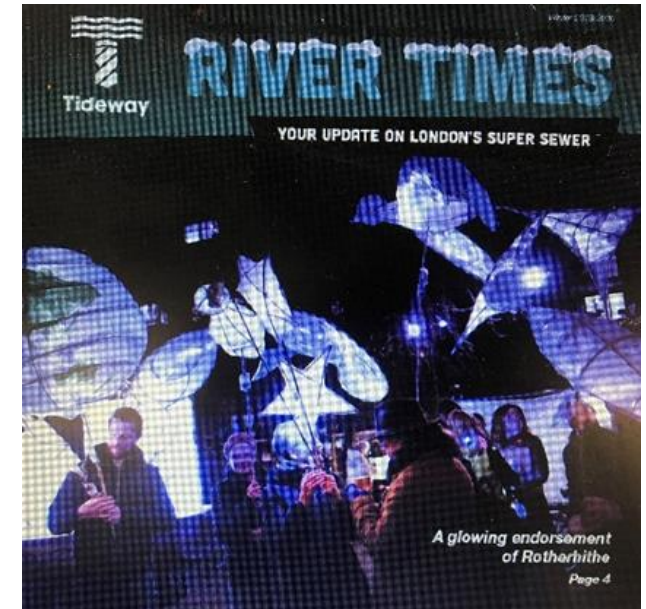




Tideway East went to Skills London to enthuse thousands of the capital's schoolchildren about Engineering



Tideway supported Illuminate Rotherhithe in celebrating the history of the Thames



## The Next Generation

We're proud to be investing in young people by opening our doors for A Capital Experience.



“

Every pupil should have first-hand experiences of the workplace through work visits, work shadowing and / or work experience.  
- Department for Education's Careers Strategy

#ACapitalExperience

#OpeningDoors

#Pathways2Progress

5 December 2018 • Dominion Theatre • 11.00-15.00

We hosted A Capital Experience for local Career Ready students to learn about career opportunities on the project

# Legacy award for Equality, Diversity & Inclusion



# Visit from Water Minister, Rebecca Pow



# 4D modelling award finalists in Singapore

# The Big Bottle Count



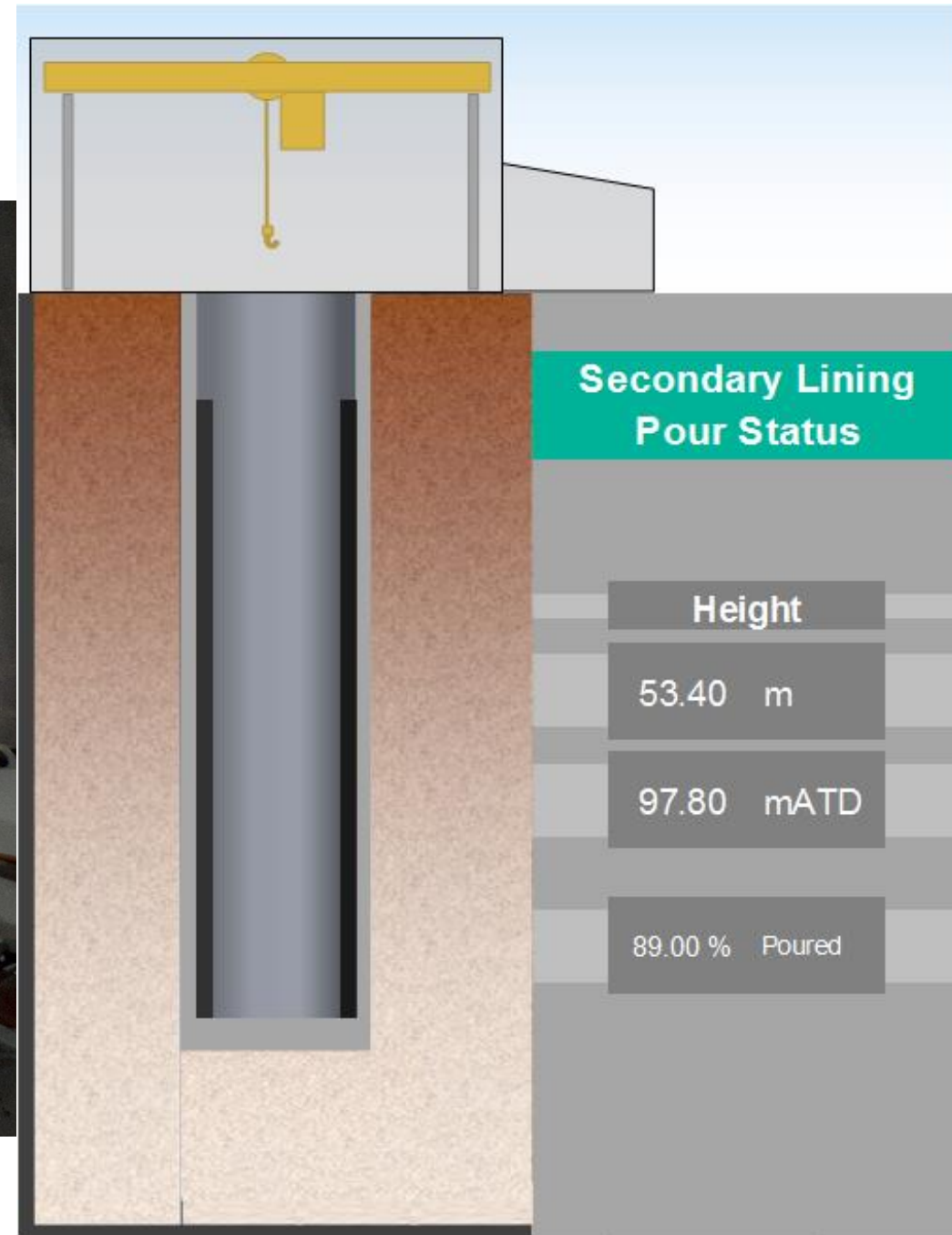
# Staff Volunteering





**CONSTRUCTION UPDATE**

# Shaft secondary lining - update



# Shaft secondary lining

- We are nearing the completion of the works for the secondary lining (during the next two weeks)
- Secondary lining is a second reinforced layer of concrete inside the shaft wall (slipform)
- The formwork sits inside the full curved perimeter of the shaft (25m diameter) and is concreted in sections. Once a section is poured, the formwork is gradually raised until the secondary lining is complete
- Concrete is supplied by the batching plant inside the acoustic enclosure
- 24 hour / 5 day per week activity (with the enclosure doors closed from 6pm)
- This may also require occasional deliveries of cement and aggregate up to 22:00 to continue the pour



## Shaft internal works

- After completion of the secondary lining we will set up for adit construction and tunnelling
- A concrete slab needs to be constructed at the base of the shaft for this
- We will need concrete wagons to deliver up to 22:00 on one day in mid-February
- Wagons will discharge within the acoustic enclosure with most doors closed after 18:00 (excluding the northern door which will allow access for the wagons)

## Filling the gap between the shaft walls

- There is a gap between the secondary lining and the outer, diaphragm walls called the annulus
- This will be filled with concrete mid-February, ahead of tunnelling
- Concrete will be supplied by the batching plant inside the acoustic enclosure day and night and by concrete wagons during the day only
- Concreting will continue continuously 24 hour / 5 days a week, enclosure doors closed from 6pm
- This may also require occasional deliveries of cement and aggregate up to 22:00

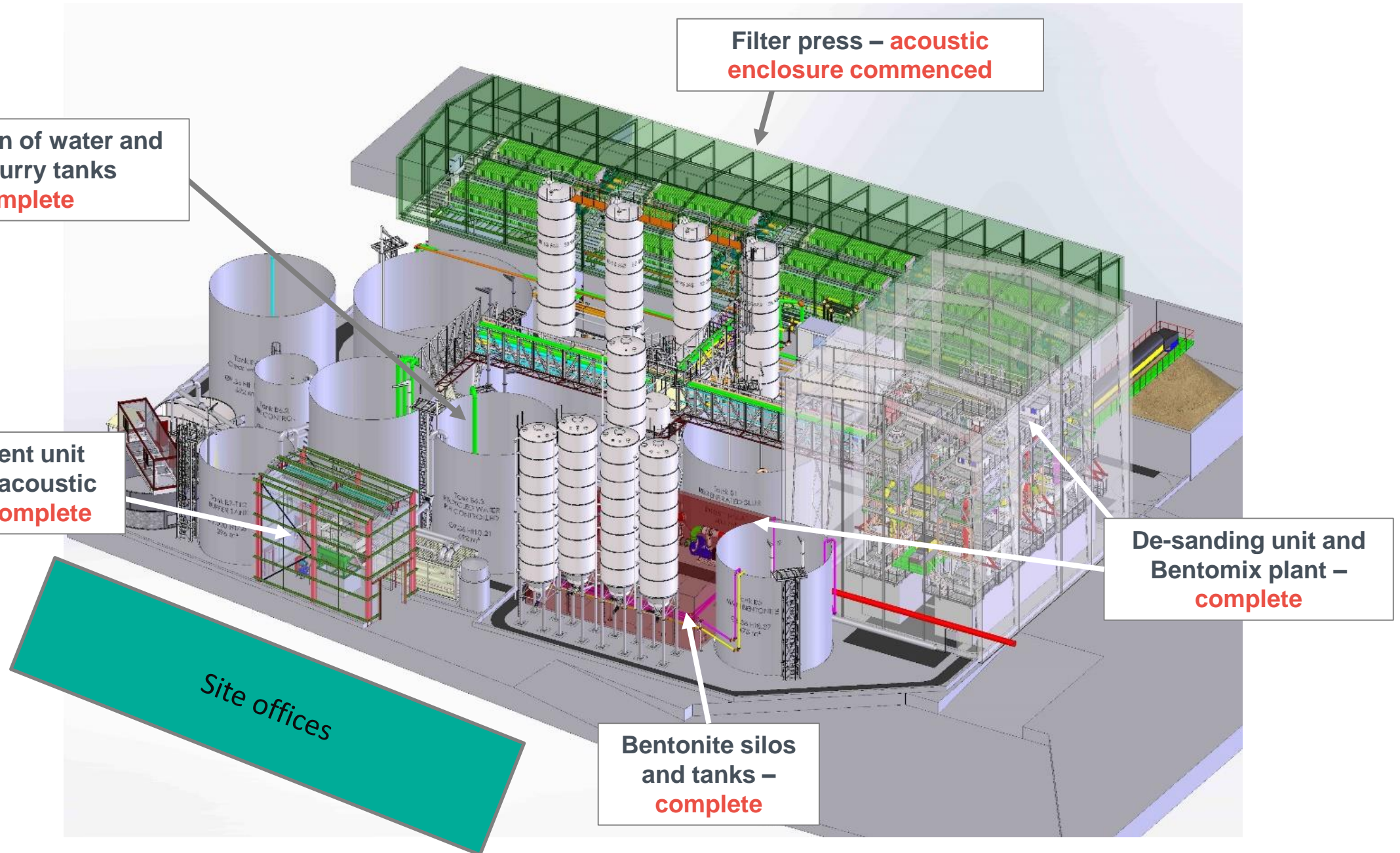
# Slurry Treatment Plant (STP) progress

- The acoustic cladding is complete on the de-sanding unit and bentomix building enclosures
- The filter press and remaining tanks are now complete
- We have begun the acoustic enclosure over the filter press
- Testing and commissioning starts in the coming months



The STP will separate materials excavated during tunnelling, before it is taken away from site by barge

# Slurry Treatment Plant



# Slurry Treatment Plant

Changes to original design include:

- Shortest tanks closest to adjacent buildings, in the south west of the site
- Highest buildings located on the eastern side of the STP (in the middle of the site)
- Filter press building located north of Luna House, to provide acoustic shielding
- Inlets extended to be submerged
- Higher specification of acoustic attenuation (additional cladding added) on buildings, where possible
- Water tanks located adjacent to site hoarding

# Section 61 - overview

- Section 61 phase five for tunnelling works – approved by LB Southwark covers:

October 2019 to October 2020

## Permitted Site Working Hours

**Standard Working Hours:** 08:00 to 18:00 (Monday to Friday) and 08:00 to 13:00 (Saturday)

### **Extended Working Hours**

- 18:00 to 22:00 (Monday to Friday). 08:00 to 17:00 (Saturday)
- General works limited to tidally influenced marine movements, lighting (task specific) and gantry crane movements within shaft enclosure

### **Continuous Working Hours (24/7)**

- Tunnelling and tunnel related activities such as;
  - Annulus infill
  - Launch and reception adit construction
  - STP operation
  - Shaft set-up for tunnelling, TBM install and launch

### **Mobilisation and demobilisation Hours**

- 07:00 to 08:00 and 18:00 to 19:00 (Monday to Friday). 07:00 to 08:00 and 13:00 to 14:00 (Saturday)
- 22:00 to 22:30 (Extended working hours activities) (Mon to Fri). 17:00 to 17:30 (Extended working on Saturdays)

# Section 61/working time details for upcoming shaft internal and annulus works

## **1) Shaft internal concreting works;**

- Delivery of concrete wagons to site between 18:00 – 22:00hrs on one evening to facilitate internal pit-bottom platform creation. [estimate of ~3 deliveries per hour].

## **2) Annulus inflill works;**

- Weekday delivery of concrete wagons between 18:00 – 20:00 [estimate of ~3 deliveries per hour].
- Weekday delivery of GGBS/ cement tankers on weekday evenings between 18:00 – 22:00 [estimate of ~2 deliveries per evening].
- Saturday delivery of concrete wagons between 13:00 – 18:00 [estimate of ~3 deliveries per hour].
- Saturday delivery of GGBS/ cement tankers between 18:00 – 22:00 [estimate of ~2 deliveries].
- Sunday delivery of GGBS/ cement and aggregate [estimate of 5 – 6 deliveries].

Concrete wagons discharging within acoustic enclosure.

All deliveries screened by existing acoustic buildings.

*Application for the above works is currently with London Borough of Southwark.*

# Approved S61 for tunnelling works – more detail

This Section 61 covers:

## Tunnel adits

- Tunnel adits are the first sections of tunnel at the base of the shaft
- One will be 30 metres long to launch Selina, our tunnel boring machine (TBM). The other adit will extend 16 metres and be the final destination of the TBM that arrives from Tideway's central section
- It will be excavated gradually while the adit is sprayed with concrete
- Concrete supplied by the batching plant inside the acoustic enclosure

## Tunnelling

- The TBM will arrive by barge; then lowered into the shaft for tunnelling
- Tunnelling will be a continuous activity: 24 hours / 7 days a week, planned from Summer 2020
- The slurry treatment plant will also run continuously to support tunnelling activities



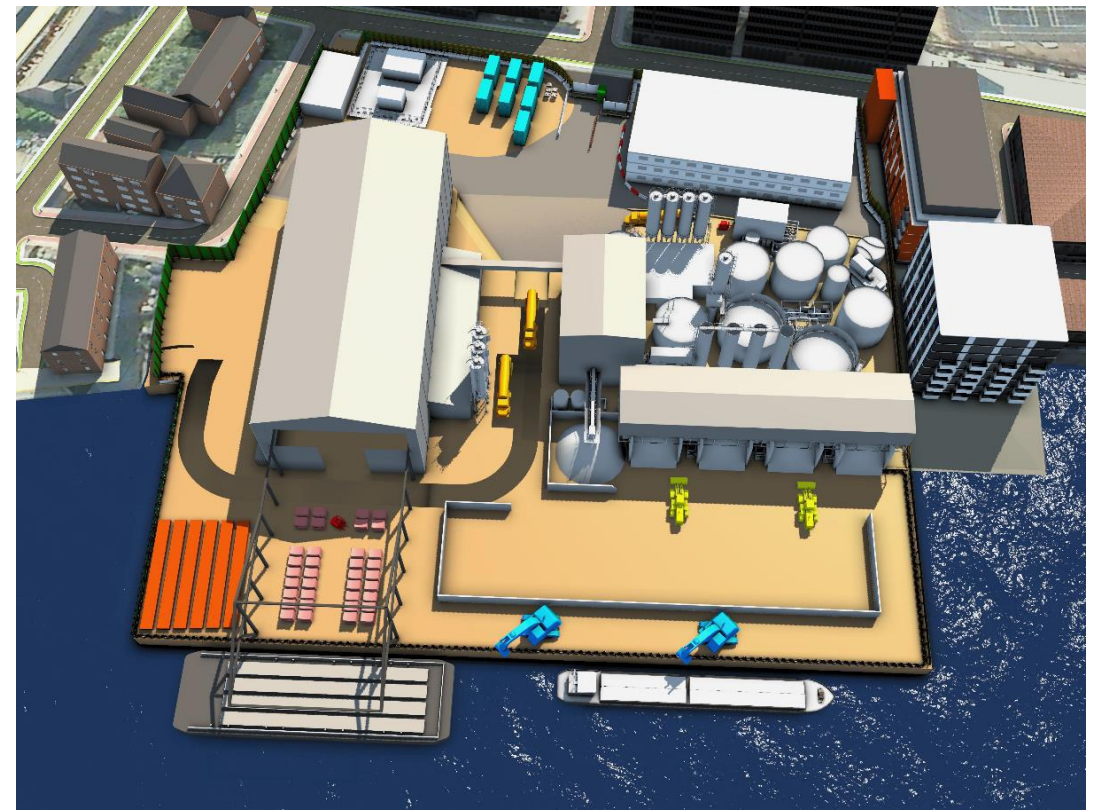
*An example of a tunnel adit being constructed*



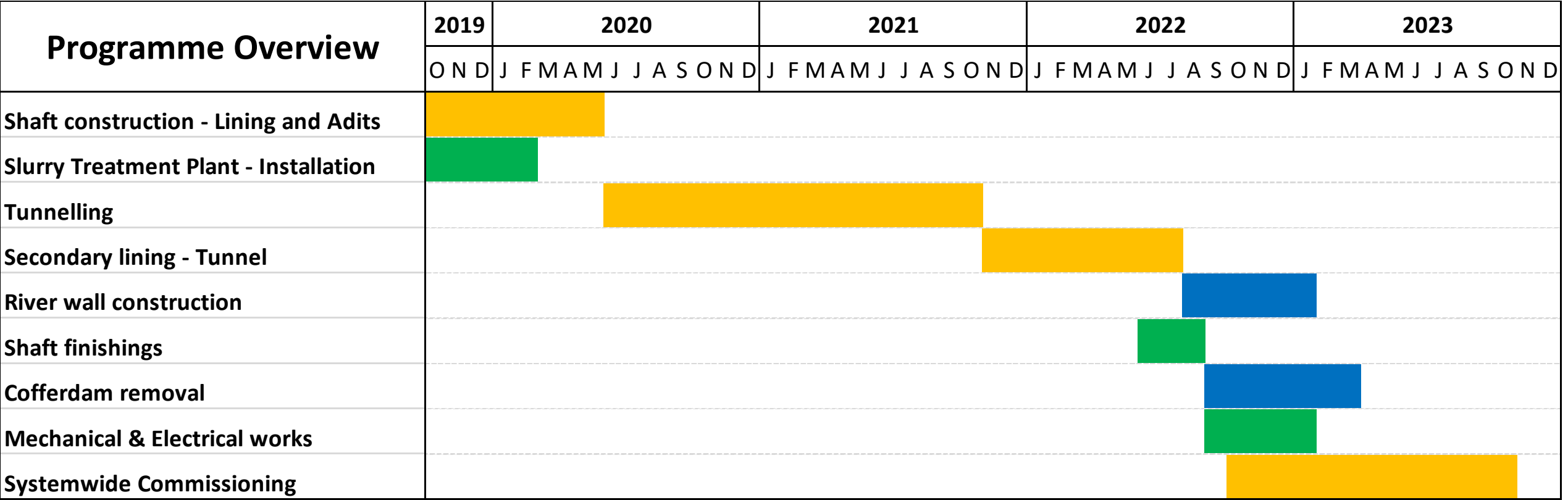
*TBM 'Selina'*

# What to expect during tunnelling

- Continuous working inside the acoustic enclosure: 24 hours / 7 days a week
- Running of the slurry treatment plant (STP) continuously, to support tunnelling
- Movement of treated, tunnelled material from the STP into muck bins with 2 loading shovels, up to 22:00 Monday to Saturday



# 12-month draft look-ahead



# Chambers Wharf Target Programme

Programme Overview		2020											
	Dec	Jan	Feb	Mar	Apr	May	Jun	Jul	Aug	Sep	Oct	Nov	Dec
Shaft Secondary Lining and Portals													
SCL Tunnel Adits													
Tunnelling Set Up													
TBM Delivery													
Tunnelling													
Erection of Slurry Treatment Plant													
Support Activities (Marine, Maintenance, etc,)													

- Standard Working Hours

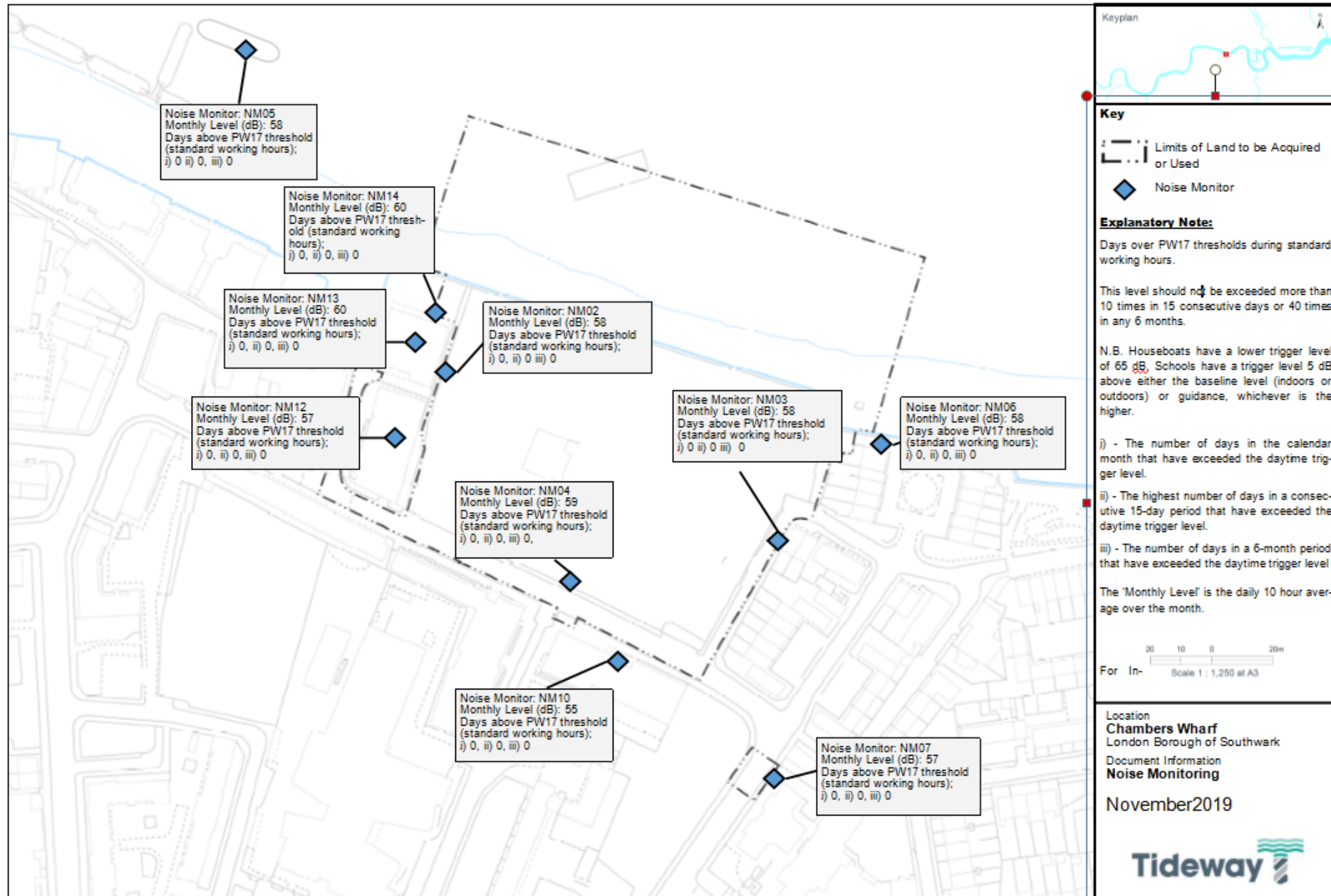
(08:00 - 18:00) Monday to Friday, (08:00 - 13:00) Saturday
- Extended Working Hours

(08:00 - 22:00) Monday to Friday - Support activities
- (08:00 - 13:00) Saturday - (Support activities to 17.00)
- Continuous Working Hours

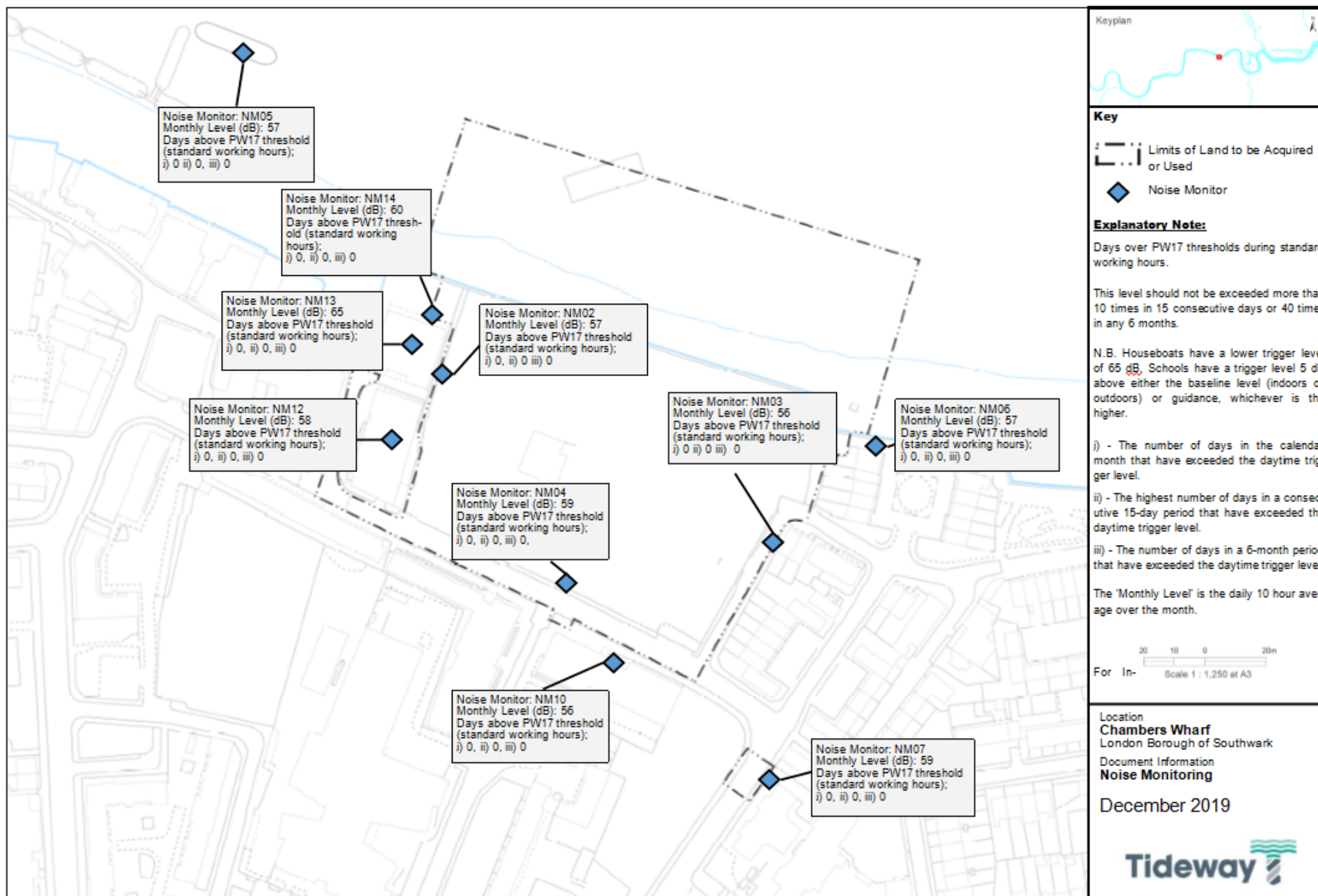
(00:00 - 00:00) Monday to Sunday

# Noise and Air Quality

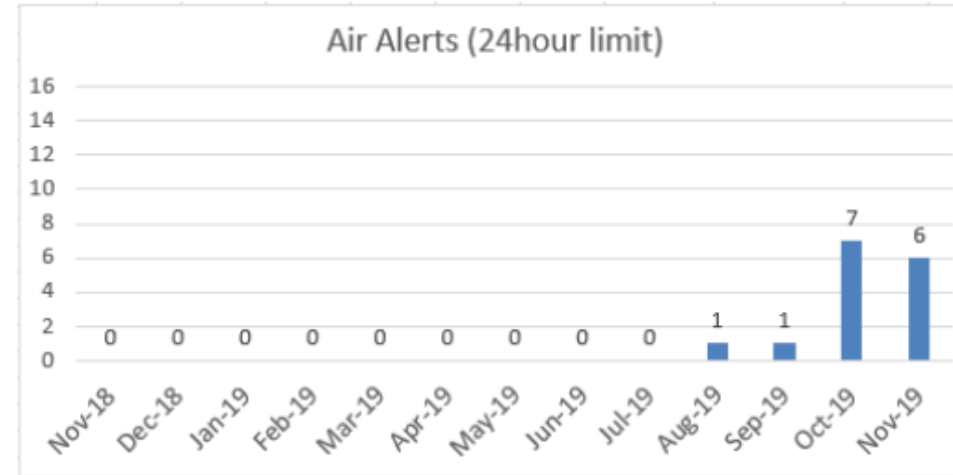
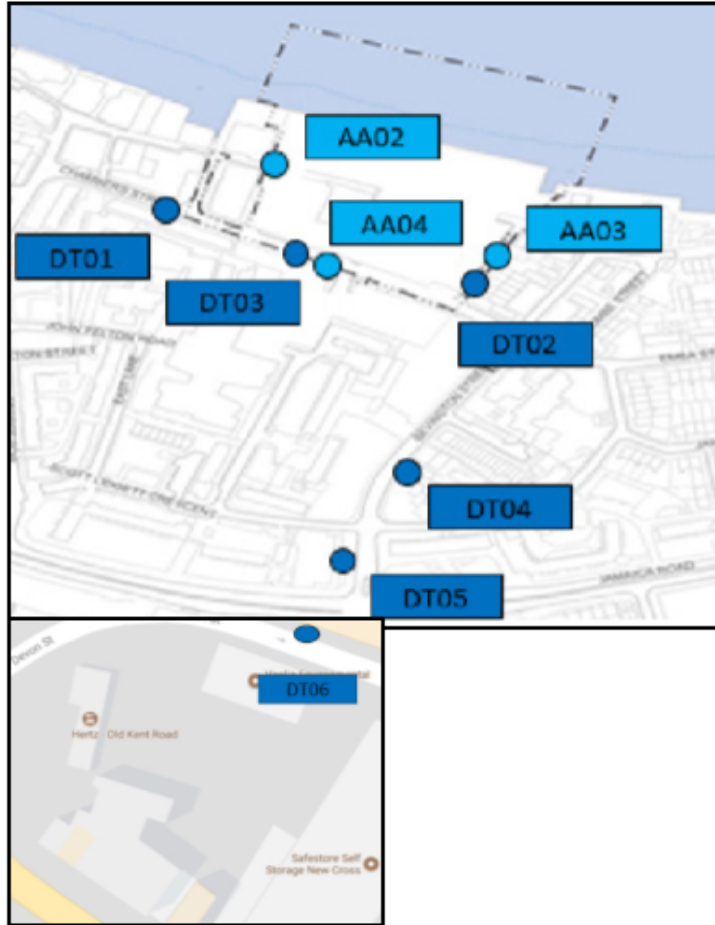
# Noise - November 2019



# Noise - December 2019



# Air Quality - November 2019



There was 6 no. 24 hour dust alert (AA03) during November 2019.

Exceedances were due to a defective heater inlet that was replaced on 27/11/19. No exceedances were recorded thereafter.

No exceedances were noted at any other monitoring points and no work was taking place during times of elevated measurement.

Total Allowable Alerts	35 per year
Total November Alerts	0
No. of alerts (12-month rolling)	15
No. of alerts due to CVB works	0

**If you have any questions or enquiries please contact the Tideway Helpdesk:**

**Telephone: 0800 030 80 80**

**Email: [Helpdesk@Tideway.London](mailto:Helpdesk@Tideway.London)**