



**Tideway**

**King Edward Memorial Park Foreshore  
Community Liaison Working Group  
Wednesday 22 January 2020**

# Staff

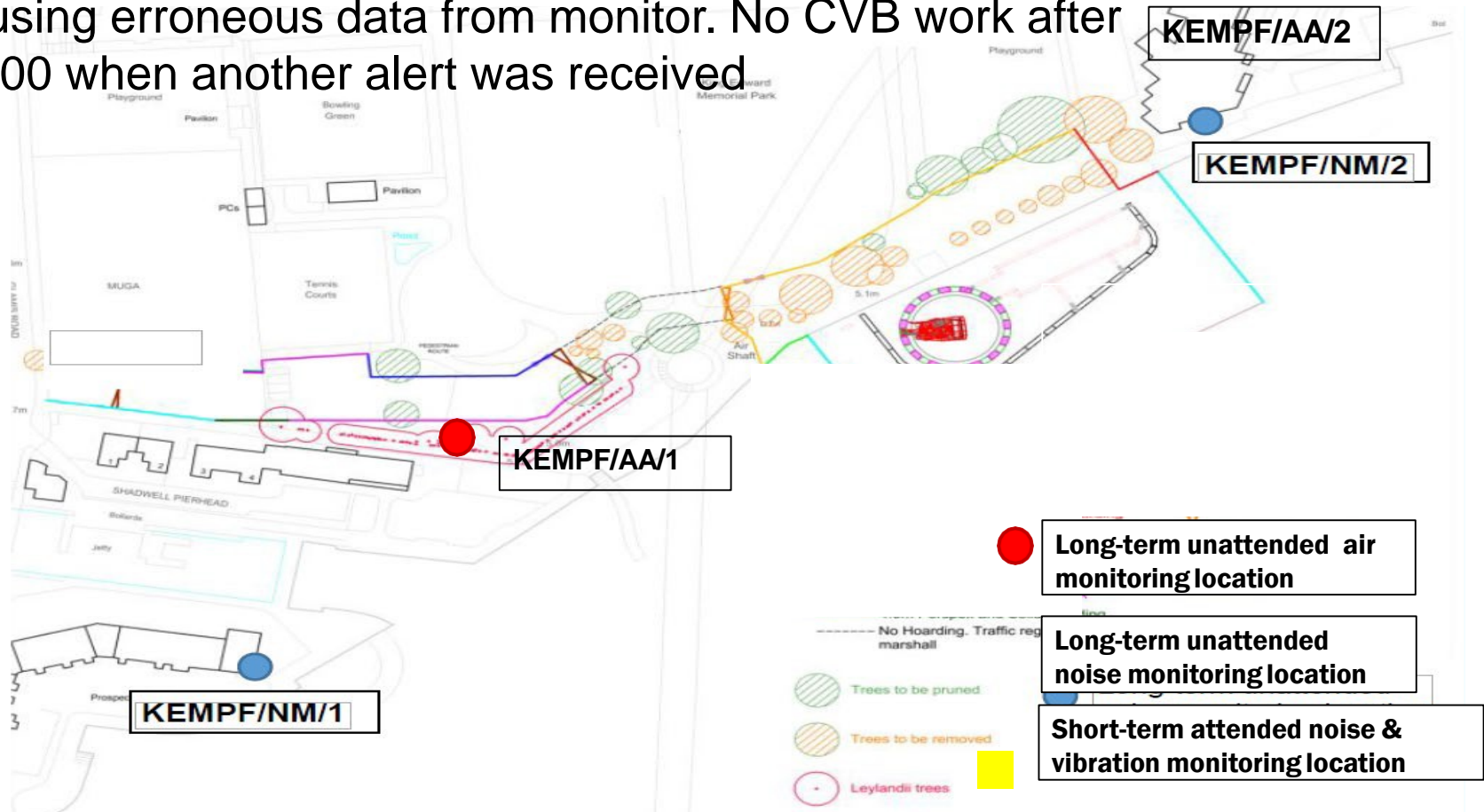
- **Dominic Lovelock, CVB Project Manager**
- **Martin Griffiths, CVB Senior Community Relations Manager**
- **Heather Nickson, CVB Environmental Advisor**
- **Toby Cuthbert, CVB Deputy Project Manager**
- **Jo Kujovic, CVB Senior Engineer**

# Content

- **Noise and air quality**
- **Legacy**
- **Construction progress**
- **Programme of future work**

# Noise and air quality

- No Section 61 noise exceedances between October and December
- No Air Quality alerts in October and November
- In December: one 24-hour mean exceedance (6/12/19). Alert reviewed onsite, no dust source identified. Potentially wind causing erroneous data from monitor. No CVB work after 22:00 when another alert was received



# LEGACY



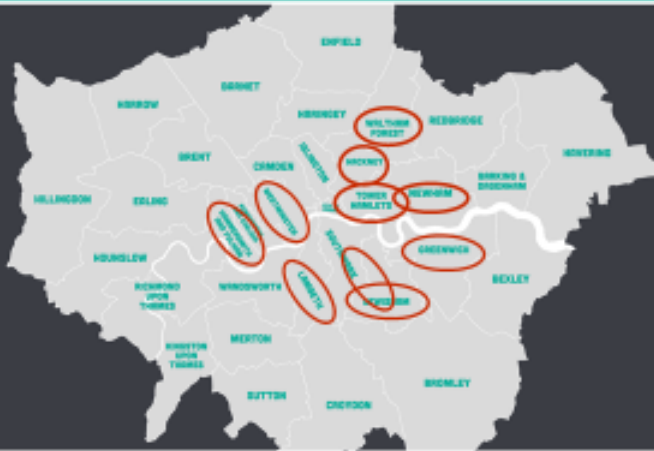


# EAST COMMUNITY INVESTMENT & STEM

## October - December 2019

LONDON  
BOROUGHS  
WE'VE  
SUPPORTED

10



NUMBER OF HOURS VOLUNTEERED

454



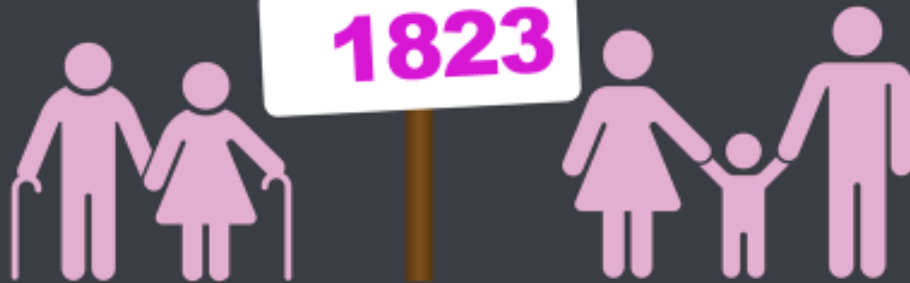
NUMBER OF PEOPLE VOLUNTEERED

150



NUMBER OF PEOPLE WE SUPPORTED

1823



ORGANISATIONS WE'VE HELPED

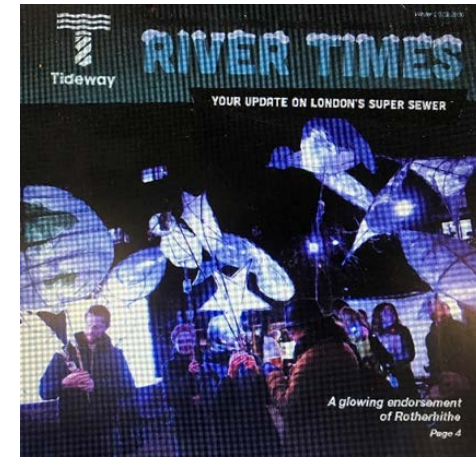
27





# Next Generation

Tideway supported  
Illuminate Rotherhithe  
in celebrating the  
history of the Thames



Tideway East went to  
Skills London to enthuse  
thousands of the  
capital's schoolchildren  
about Engineering

We hosted an apprentice information  
discussion and A Capital Experience  
for Career Ready students from  
Tower Hamlets to learn about career  
opportunities on the project





# Legacy award for Equality, Diversity & Inclusion



# Visit from Water Minister, Rebecca Pow



# 4D modelling award finalists in Singapore

# The Big Bottle Count



# Volunteering in Tower Hamlets Cemetery Park





# Charity

Observations and medical appointments triggered CVB donation to Samaritans of **£2,289.50**

Brew Monday this week on our sites

KEMPF staff are looking for a local charity to support in 2020.

Please contact Project Manager,  
Dominic Lovelock with your suggestions



You've made the **team**

Hello Dominic

Exciting news - you're now part of team Tideway East

Here's a link to your team's fundraising page:  
<http://uk.virginmoneygiving.com/team/TidewayEast1>

Email your fundraising page link to everyone you know, talk about it whenever you can, and tell friends on social media what you're up to. And don't forget to make it personal - tell people why you're doing this.

Before you do, make sure your page has a target (the bigger the better), great pictures and a compelling story.

[Sign in to edit your page](#)

Good luck with your challenge.

The Virgin Money Giving Team

# Feedback from our community survey in the River Times



- ***‘site workers friendly – always say hello, especially at pedestrian crossing’***
- ***‘everybody considerate, courteous’***
- ***‘keeping local access to the park and the Thames path’***
- ***‘Thank you for ‘River Times’, it’s so good to be informed about activities & progress’***
- ***‘trying to keep local residents happy and aware of progress and noise etc’***
- ***‘great job’***
- ***‘thank you for the proactive updates – they’re very useful’***
- ***‘nice to have windows in the hoarding surrounding the site so we see things changing.’***
- ***‘great overall, can’t wait to see what it’s like when complete’***
- ***‘very considerate to neighbours and the environment, doing an excellent job and minimising disruption to locals’***

# CONSTRUCTION





# Saturday working for Diaphragm Wall construction

- Current S61 consent allows for Saturday maintenance on cranes, excavators, compressors, grouting equipment, barges, dwall panels, marine plant and pumps
- The project would like consent to continue general construction activities during Saturdays (not concreting as can over-run)
- The sequence of dwall construction: Excavation, replacing drilling support fluid for concreting support fluid, placing the steel reinforcement, concreting. Excavation stability is the biggest concern during dwalling construction so minimising the time the excavation is open is vital. Saturdays will enable the team to complete the excavation quicker, with the excavation open for less time, reducing the risk of excavation collapse. Dwall excavation instability is the primary risk for potential programme delays so Saturday working will also reduce the risk of programme extensions.
- Completion date for the dwall is planned in mid-June. Working during Saturdays could improve the programme by 2-3 weeks and will reduce the risk of programme over-runs





# Aerial view - December 2019



# Programme – 12 month look ahead

Activity	2019				2020			
	Q1	Q2	Q3	Q4	Q1	Q2	Q3	Q4
Additional Sheet Piles and Cofferdam Works	Completed							
Prepare Cofferdam Platform and DSM	Completed							
Diaphragm Walls								
Excavate Shaft								

## Standard Working Hours



8:00 to 18:00, Monday to Friday

## Extended Working Hours



Up to 22:00, Monday to Friday  
Diaphragm walls and tidally affected works

## Mobilisation and Demobilisation Hours

Standard: up to one hour before and after  
Extended: up to 30 minutes before and after

## Maintenance

08:00 to 17:00 Saturdays and 10:00 to 16:00 Sundays



# Programme - project duration

## - subject to future council consents

### King Edward Memorial Park Foreshore Programme Overview

Programme Overview 2018-2021	2017				2018				2019				2020				2021				2022				2023			
	Q1	Q2	Q3	Q4	Q1	Q2	Q3	Q4	Q1	Q2	Q3	Q4	Q1	Q2	Q3	Q4	Q1	Q2	Q3	Q4	Q1	Q2	Q3	Q4	Q1	Q2	Q3	Q4
Install Cofferdam			Completed																									
Relieving Platform					Completed																							
Additional Sheet Piles and Cofferdam Works									Completed																			
Prepare Cofferdam Platform and DSM									Completed																			
Diaphragm Walls												40% Complete					Extended hours for long pours / Removal of excavated spoil.											
Excavate Shaft					Extended hours for long pours / Removal of excavated spoil.																							
Build Shaft													Extended hours for long pours.															
Hydraulic Structures					Extended hours for long pours / Removal of excavated spoil.																							
Connect into Sewer																												
Build Adit																												
Remove Cofferdam																												
Moving Parts and Tests																												
Landscaping																												

#### Standard Working Hours

8.00 to 18.00, Monday to Friday

#### Extended Working Hours

First Shift 8.00 to 18.00 Monday to Friday

Second Shift: 18:00 to 22:00 Monday to Friday

This work or movement of marine plant will occur only when necessary due to tidal restrictions of long concrete pours.

#### Mobilisation and Demobilisation Hours

Up to one hour before and after our standard hours and 30 minutes after extended hours working.

07:00 to 08:00 and 18:00 to 19:00 Monday to Friday or

22:00-22:30 Monday to Friday

#### Maintenance Periods

On occasions due to health and safety requirements we will also carry out maintenance between

08:00 to 17:00 Saturdays and 10:00 to 16:00 Sundays

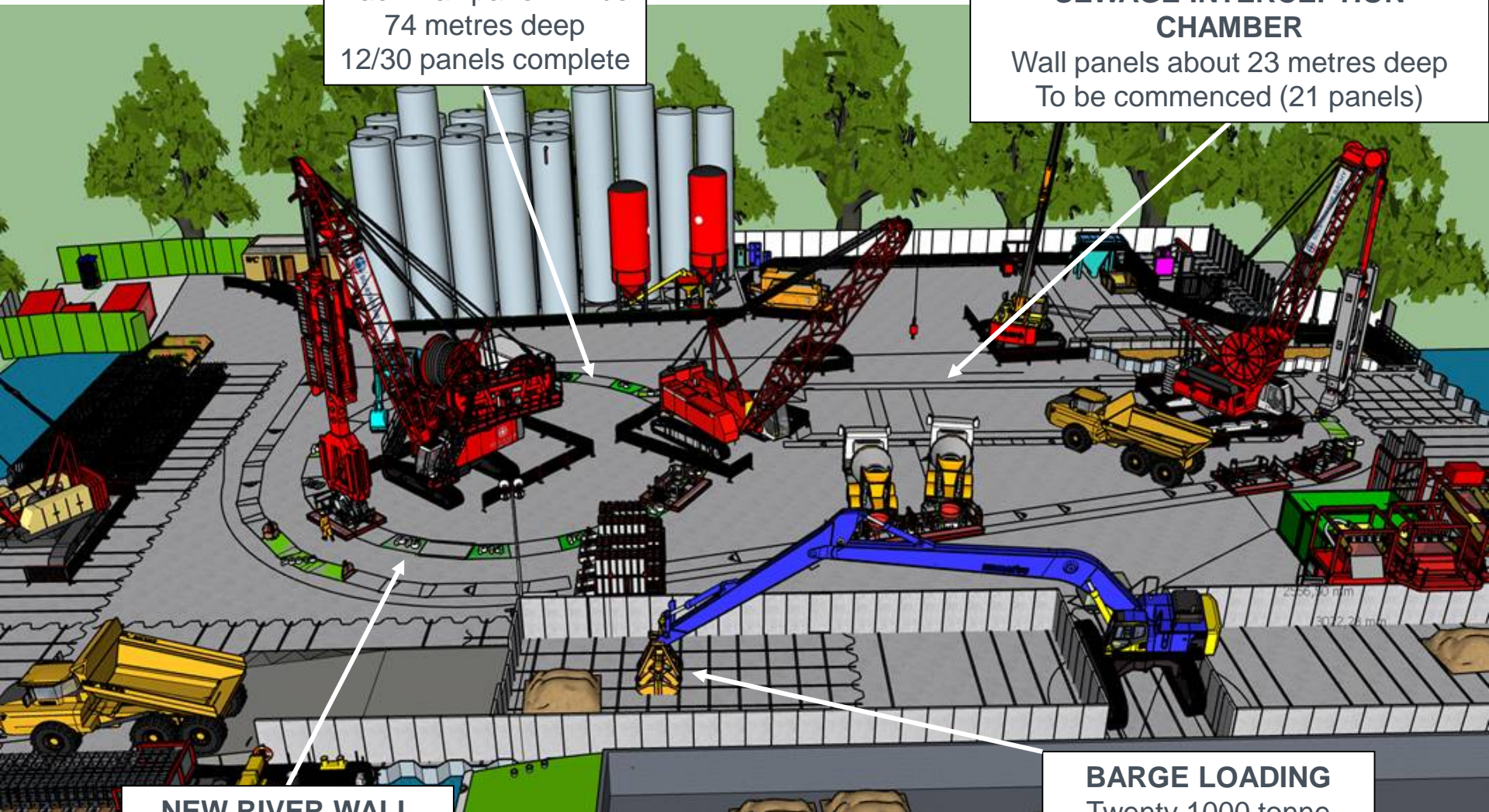
# Installing the diaphragm walls

## SHAFT

Each wall panel will be  
74 metres deep  
12/30 panels complete

## SEWAGE INTERCEPTION CHAMBER

Wall panels about 23 metres deep  
To be commenced (21 panels)



## NEW RIVER WALL

Wall panels around  
23 metres deep  
3/16 panels complete

## BARGE LOADING

Twenty 1000 tonne  
barges removed so far  
during the diaphragm  
wall activity



River wall panel excavation



Shaft wall panel excavation



Installing cages



Pouring Concrete







**Tideway**

If you have any questions or enquiries  
please contact the Tideway Helpdesk :

Telephone: **08000 308080**

Email: [Helpdesk@Tideway.London](mailto:Helpdesk@Tideway.London)