



Tideway

Deptford Church Street & Greenwich Pumping Station

Community Liaison Working Group

Tuesday 25 February 2019

STAFF

Tideway

- Andy Sefton, Senior Project Manager Greenwich
- Darren Kehoe, Project Manager Greenwich
- Anil Dhillon, Project Manager Deptford
- Rebecca Major, Communications Officer

CVB – main works contractor

- Sophie Lambert, Deptford Church Street Site Manager
- Cedric Neulat, Greenwich Project Manager
- Keegan Neal, Greenwich Section Engineer

CONTENTS

Deptford Update

- Works update
- Looking ahead
- Noise and vibration

Greenwich Update

- Works update
- Looking ahead
- Noise and vibration

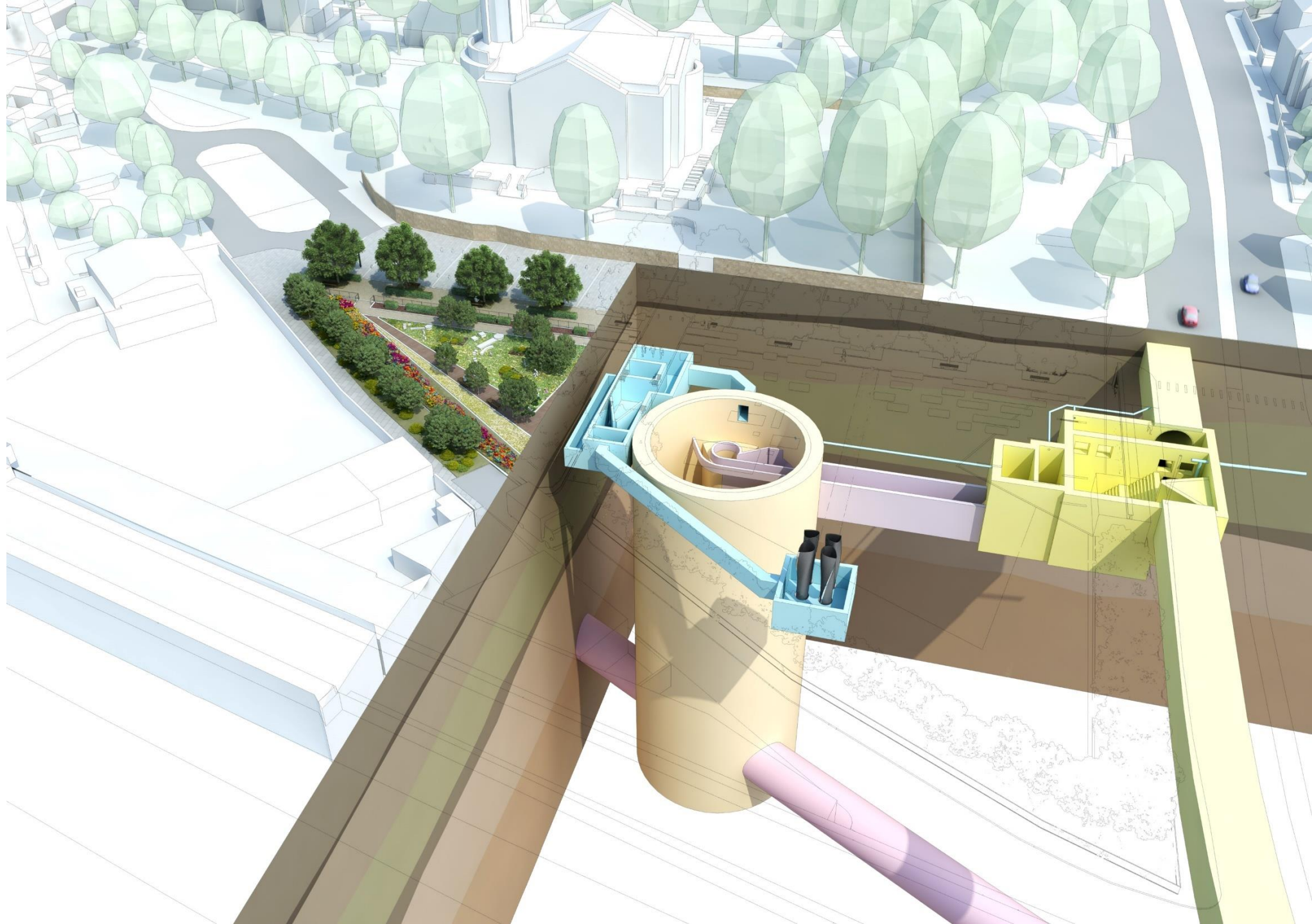
Legacy

DEPTFORD CHURCH STREET

December 2019



**What
we're
building**



Deptford works update

Shaft

- Base slab - poured on 12/09/2019
- Portals - reinforcement installed and first lift poured

Interception Chamber (Phase 1)

- Excavation completed
- Base slab completed
- Internal walls ongoing

SHAFT

3D experience
<https://kuula.co/post/79Jw3>



INTERCEPTION CHAMBER

3D experience
[https://kuula.co/
post/79Jws](https://kuula.co/post/79Jws)



Deptford look ahead

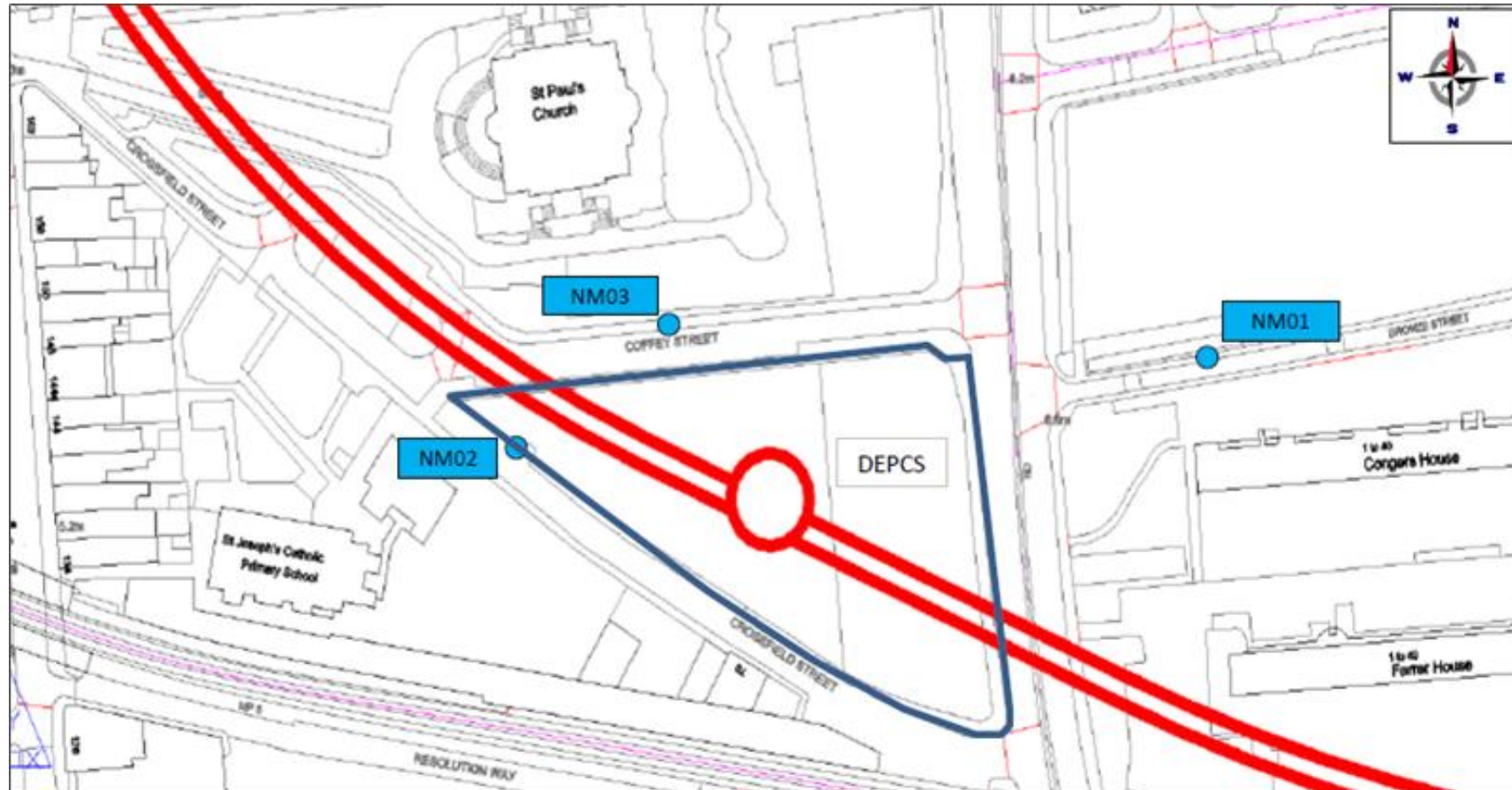
	2019	2020												2021												2022												2023																																																																																																																																																																																																																																																																																																																																																																																																																																																																																																																																																																																																																																																																																																																																																																																																																																																																																																																																																																																																																																																																																																																																																																																																																																																																																																																																																																																			
	11 12	1 2 3 4 5 6 7 8 9 10 11 12	1 2 3 4 5 6 7 8 9 10 11 12	1 2 3 4 5 6 7 8 9 10 11 12	1 2 3 4 5 6 7 8 9 10 11 12	1 2 3 4 5 6 7 8 9 10 11 12																																																																																																																																																																																																																																																																																																																																																																																																																																																																																																																																																																																																																																																																																																																																																																																																																																																																																																																																																																																																																																																																																																																																																																																																																																																																																																																																																																																																																			
Shaft civils																																																																																																																																																																																																																																																																																																																																																																																																																																																																																																																																																																																																																																																																																																																																																																																																																																																																																																																																																																																																																																																																																																																																																																																																																																																																																																																																																																																																																									

CSO internals, walls, secant piling – standard working hours (with some extended hours for concrete pours) - 08:00-18:00 Mon to Fri, 08:00-13:00 Sat

Shaft portals, backfill, vortex and slipform - extended working hours up to 22:00 Mon to Fri, up to 17:00 Sat

1 hour allowed before & afterwards for mobilization / demobilisation

Noise monitoring Sept 2019 - Jan 2020



Noise monitoring locations

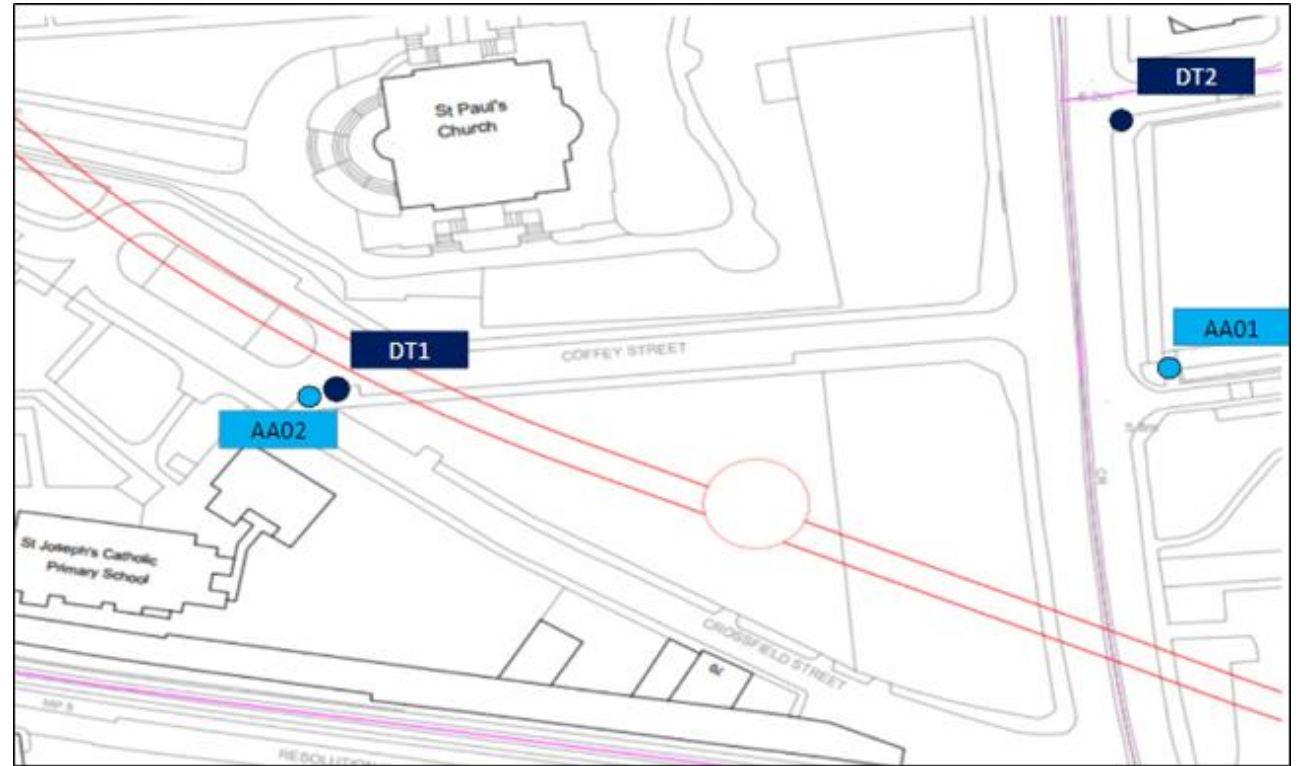
1 TAPS exceedance due to Base Slab Pour
No Section 61 exceedances

Air Quality monitoring Sept 2019 to Jan 2020

- No exceedances for the 24hour PM10 Alert
- One Particulate Pollution Incident episode reported by London Air Quality Network (LAQN) Sept 19 – Jan 20.

Tuesday 3 and Wednesday 4 December 2019 - moderate PM10 and PM2.5.
Attributed to road salting works.

- No other reported moderate or high particulate episodes recorded by the LAQN.
- From 1/9/2019 to 31/1/2020 diffusion tube results were below UK long-term Air Quality Objective annual average for NO₂ µg/m³



*Air Quality monitoring locations for particulate monitoring (PM10) (AA)
Passive NO2 monitoring using diffusion tubes (DT)*



June 2019

GREENWICH PUMPING STATION

Greenwich Overview

CLWG – 25th Feb 2020



Greenwich Connection Tunnel look ahead

GREPS - Key Dates - 2020 to 2021

Key Activity	Jan-20	Feb-20	Mar-20	Apr-20	May-20	Jun-20
Main Works						
Combined sewer Outfall (CSO) Geotechnical works						
CSO - Civils Works						
East Beam Engine House - Civils works						
Shaft Works (Tunneling)						
WTP / STP Install and commissioning						
Delivery of TBM						
Rebuild of TBM and Preperation for Tunneling						
Tunnelling						
Deptford Creek Dredging Works						

- Standard Working Hours; 08:00 - 18:00 Monday to Friday, 08:00-13:00 on Saturdays
- Extended Working Hours; up to 22:00 Monday to Friday, 08:00-17:00 on Saturdays
- Night working hours; 22:00 - 07:00 Monday to Sunday
- Continuous Working Hours (00:00-00:00) Monday to Friday

Greenwich Overview

Main site



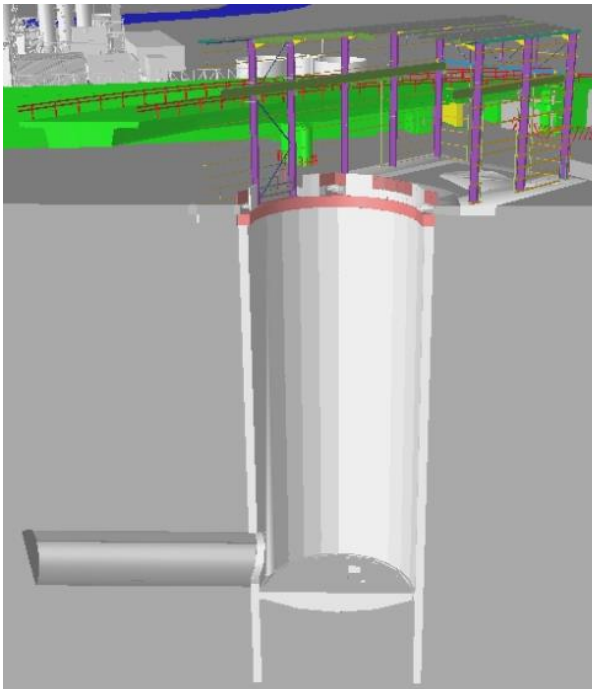
Main Site

Current Production:

- Completed construction of Sprayed Concrete Lining in Jan 2020.
- Began installation of tunnelling set up in shaft bottom
- Set up TBM lowering equipment in Feb 2020
- Thames Water continue Penstock replacement works in pumping station.

Lookahead:

- Complete tunnel set up in shaft
- Start Jet grouting on CSO (Combined Sewer Overflow) Chamber
- Start CSO Excavation



Greenwich Overview

Phoenix Wharf



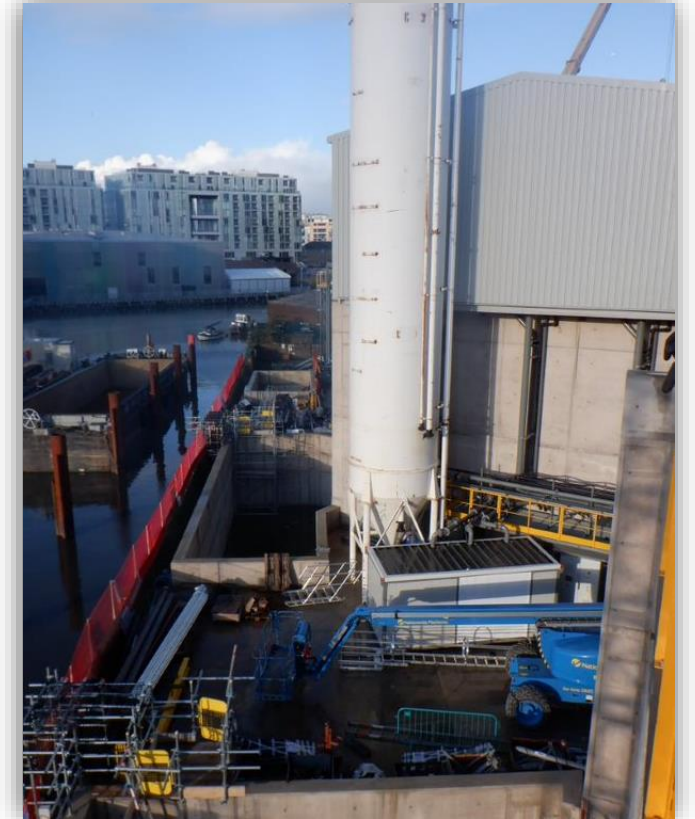
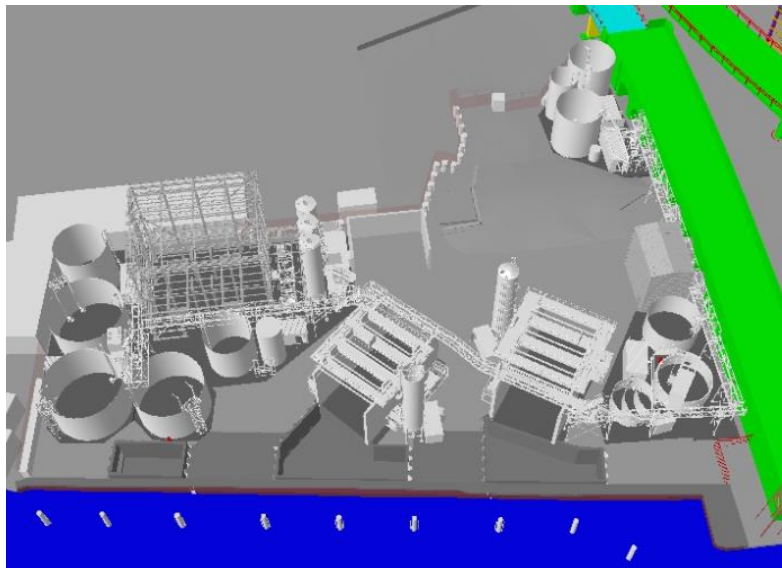
Phoenix Wharf

Current Production:

- Continue installation of the Slurry Treatment Plant
- Finished installation and commissioning of the Water treatment plant.
- Started Dredging in Deptford Creek

Lookahead:

- Complete Marine works in the Creek
- Complete Commissioning of the STP.
- Full operation of the WTP and STP during Tunnelling operations.
- Muck away from Creek with Barges of Tunnelling spoil.



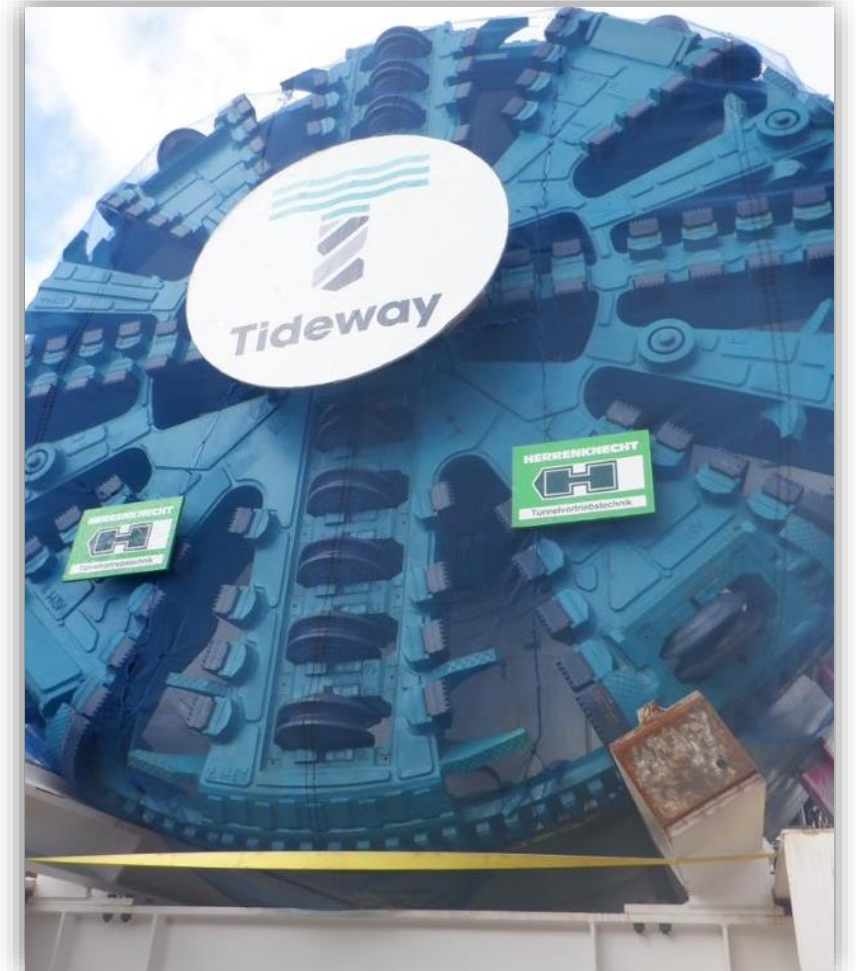
Tunnel Boring Machine

Current Production:

- TBM assembled and awaiting delivery to site.
- Delivery to site in the coming weeks with date TBD.
- Complete set up of lowering equipment in Greenwich site acoustic shed.

Lookahead:

- Arrival of TBM in Greenwich Site
- Lower TBM into shaft and start setting up ready for start of Tunnelling.
- Start Tunnelling in July 2020.
- Concrete segment delivery to site.



Deptford Creek Works Summary

February 2020



Tideway

INTRODUCTION



Deptford Creek

Construction Works



Activities

Dredging:

10/02/20 to 17/03/20

Camp Shed:

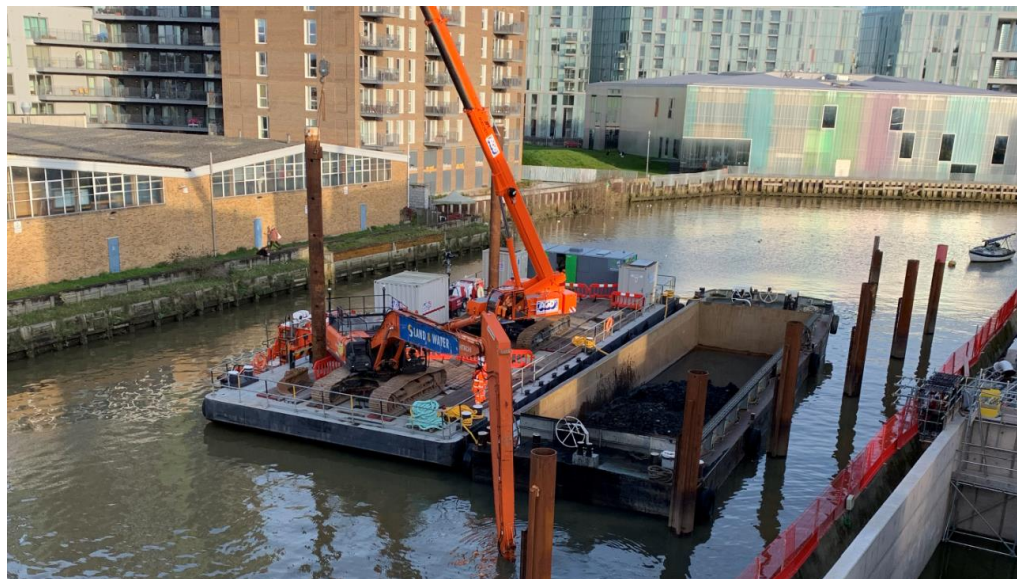
18/03/20 to 16/04/20

Scour Protection:

17/04/20 to 23/04/20

Marine Furniture:

24/04/20 to 29/05/20



Work hours

As per approved section 61

05:00-08:00

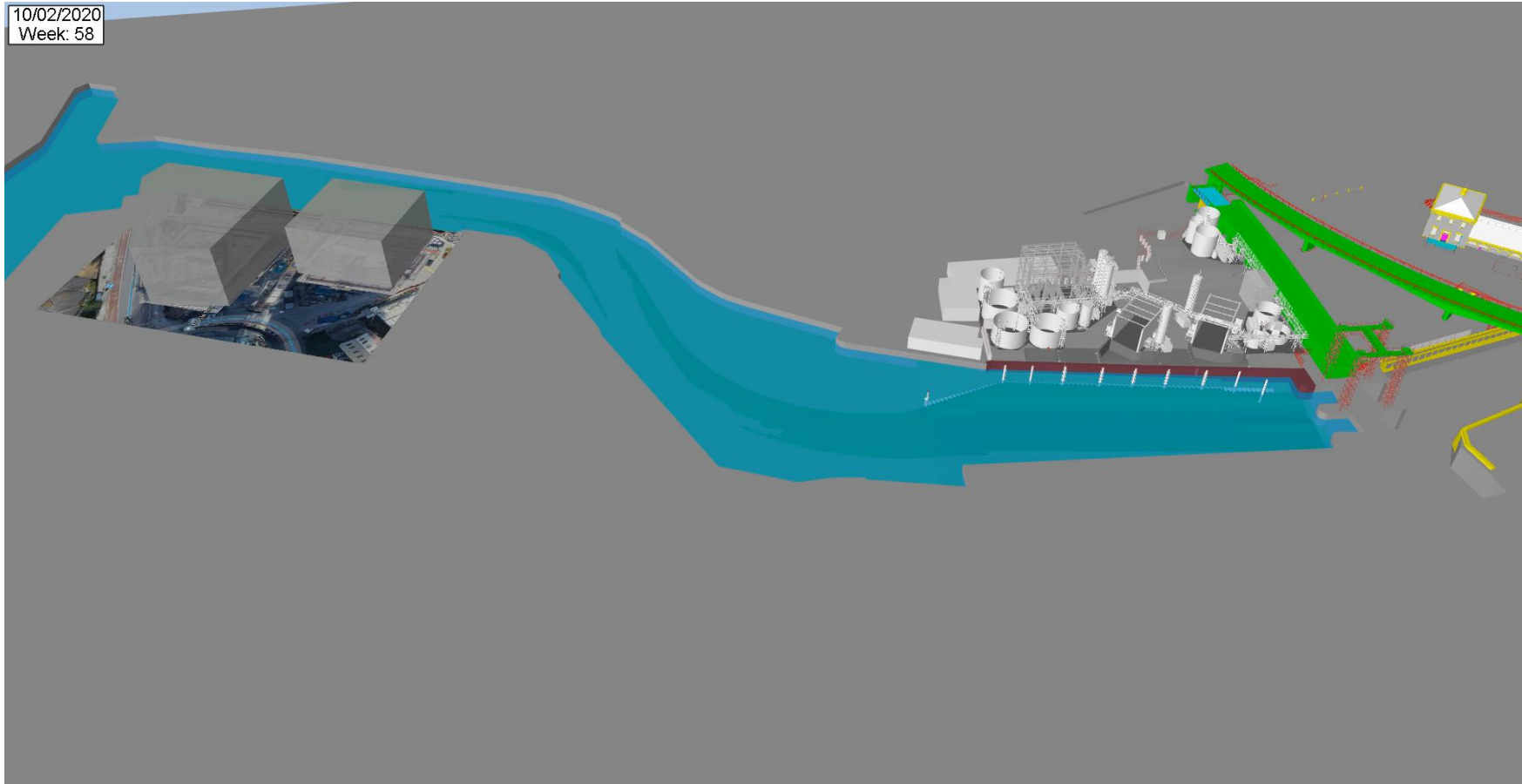
Marine plant movement

08:00-22:00

Dredging and marine plant movements

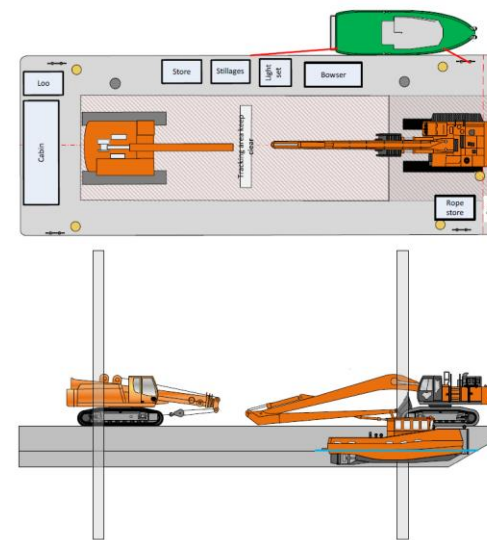
The dredging works will take place for approximately a 6 hour window each day

4D Animation



Dredging

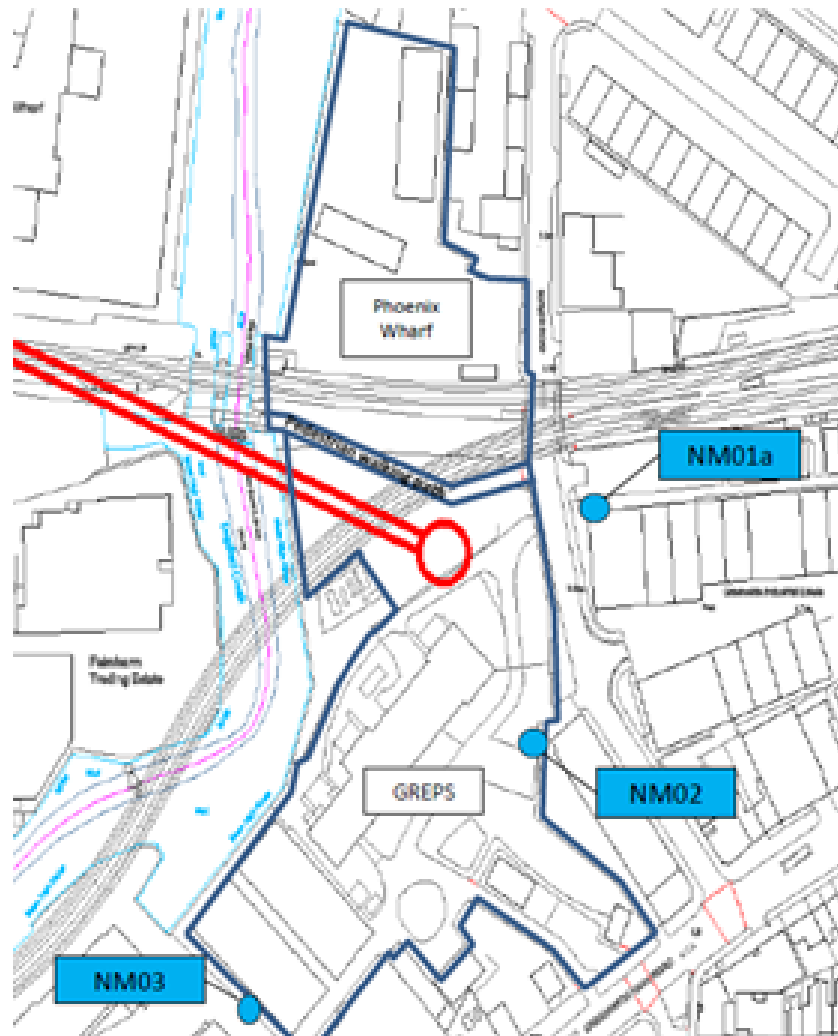
10/02/20 to 17/03/20



- Crew transfer vessel to moor alongside pontoon ladder & make fast forward & aft. Clear access from deck to ladder.
- All passengers to remain with cabin or stern of deck cabin
 - Not sitting on the gunnel of the crew transfer vessel
 - During crew transfer operations on the pontoon are to cease if operational
 - VHF contact to be made with pontoon from crew transfer vessel
 - Vessel skipper or deckhand to confirm disembarkation to passengers
 - Lifejackets to be worn
 - 3 points of contact
 - No loads to be carried up the loads
 - Lighting provided at night if access point is not illuminated



Noise from Sept to Jan 2020 (GREPS)

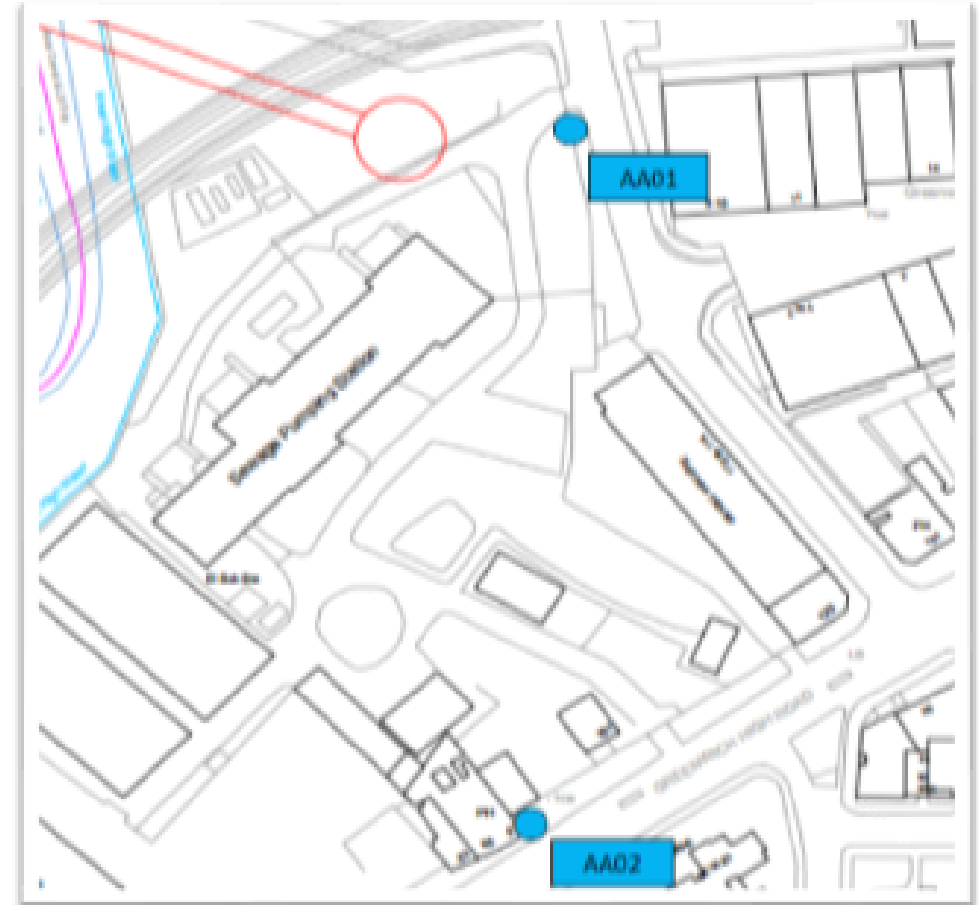


Noise monitoring locations

- No Section 61 exceedances due to CVB works

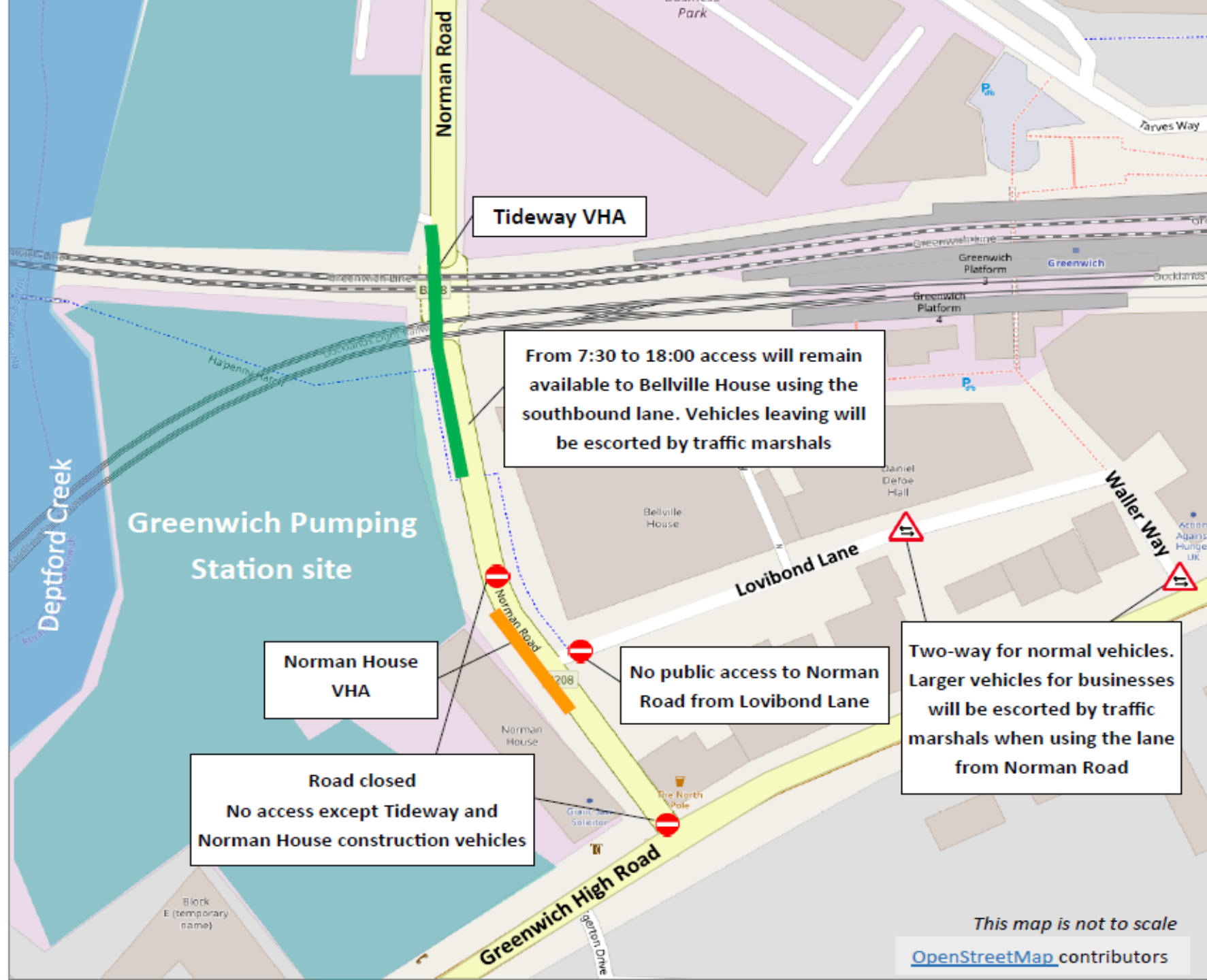
Air Quality from Sept to Jan 2020 (GREPS)

- No exceedances for the 24hour PM10 Alert



*Air Quality monitoring locations for
particulate monitoring (PM10)*

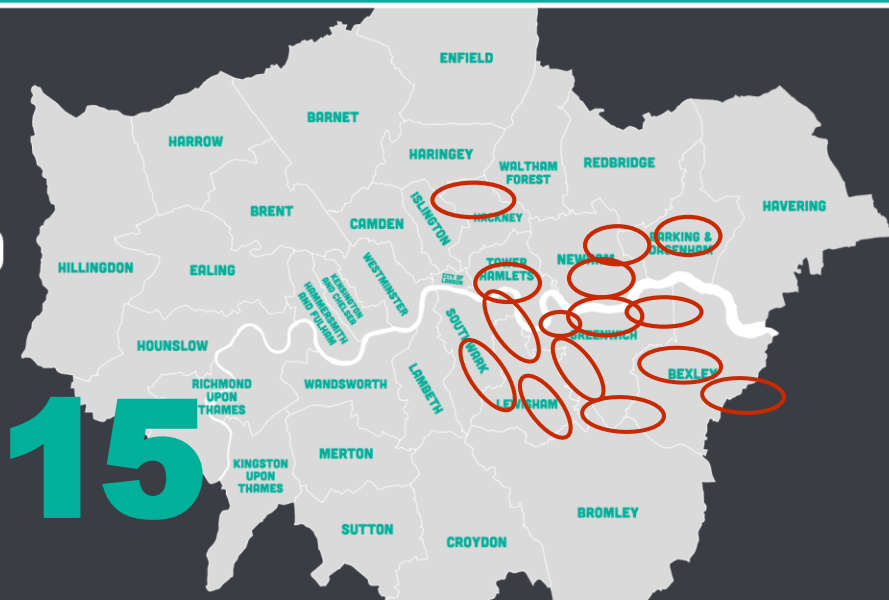
Map



EAST COMMUNITY INVESTMENT & STEM

January - December 2019

LONDON
BOROUGHES
WE'VE
SUPPORTED



NUMBER OF HOURS VOLUNTEERED

1949



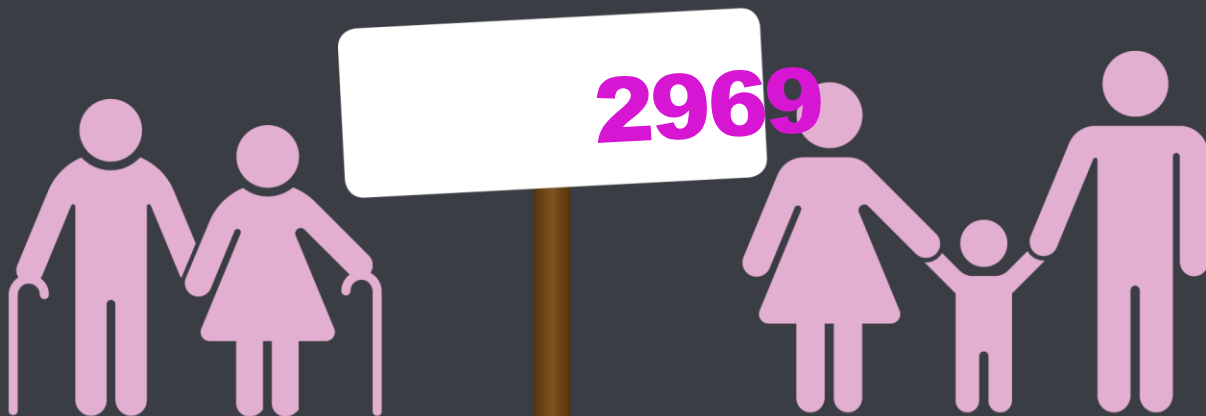
NUMBER OF PEOPLE VOLUNTEERED

577



NUMBER OF PEOPLE WE SUPPORTED

2969



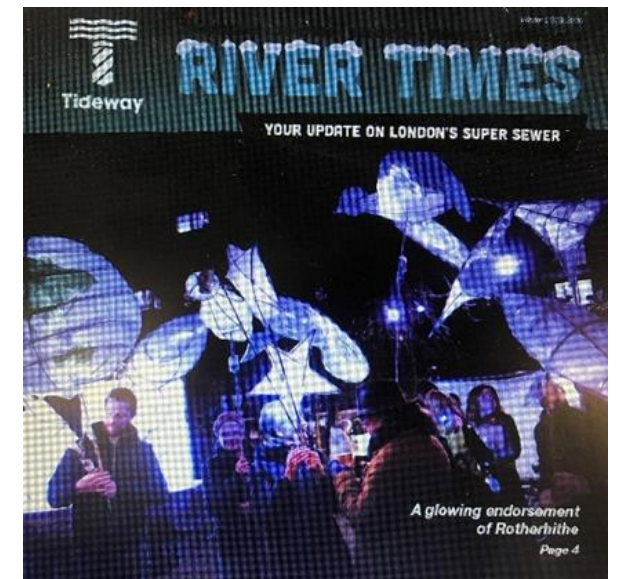
ORGANISATIONS WE'VE HELPED

58





Tideway supported Illuminate Rotherhithe in celebrating the history of the Thames



The Next Generation

Tideway East went to Skills London to enthuse thousands of the capital's schoolchildren about Engineering



We're proud to be investing in young people by opening our doors for A Capital Experience.

“
Every pupil should have first-hand experiences of the workplace through work visits, work shadowing and / or work experience.
- Department for Education's Careers Strategy

#ACapitalExperience #OpeningDoors #Pathways2Progress

5 December 2018 • Dominion Theatre • 11.00-15.00

career ready

We hosted A Capital Experience for local Career Ready students to learn about career opportunities on the project

Legacy award for Equality, Diversity & Inclusion



Visit from the Water Minister, Rebecca Pow



4D modelling award finalists in Singapore

The Big Bottle Count



Staff Volunteering



**If you have any questions or enquiries
please contact the Tideway Helpdesk on:**

Telephone: 08000 308080

Email: Helpdesk@Tideway.London