

CHAMBERS WHARF

Online Community Liaison Working Group

Monday 02 November 2020



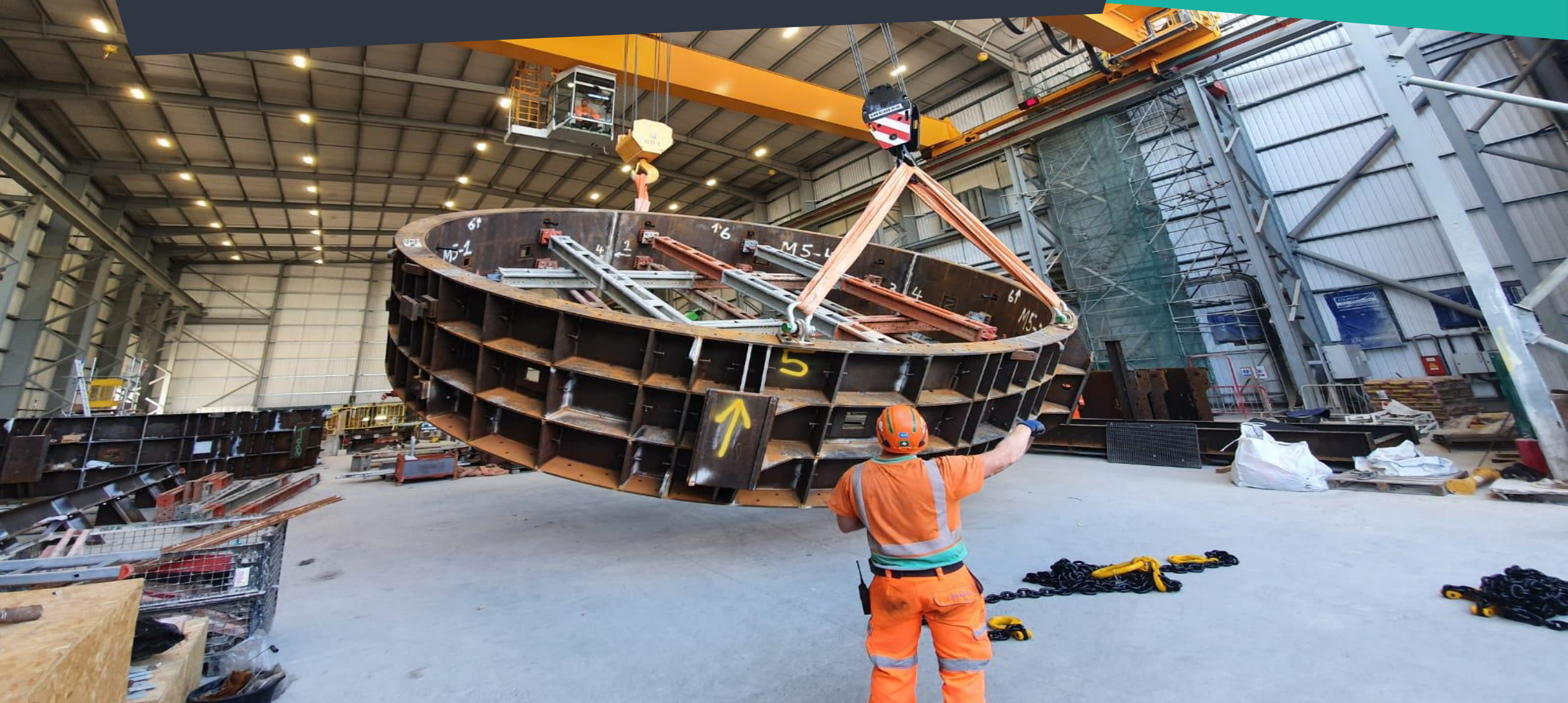
Tideway



CONSTRUCTION UPDATE

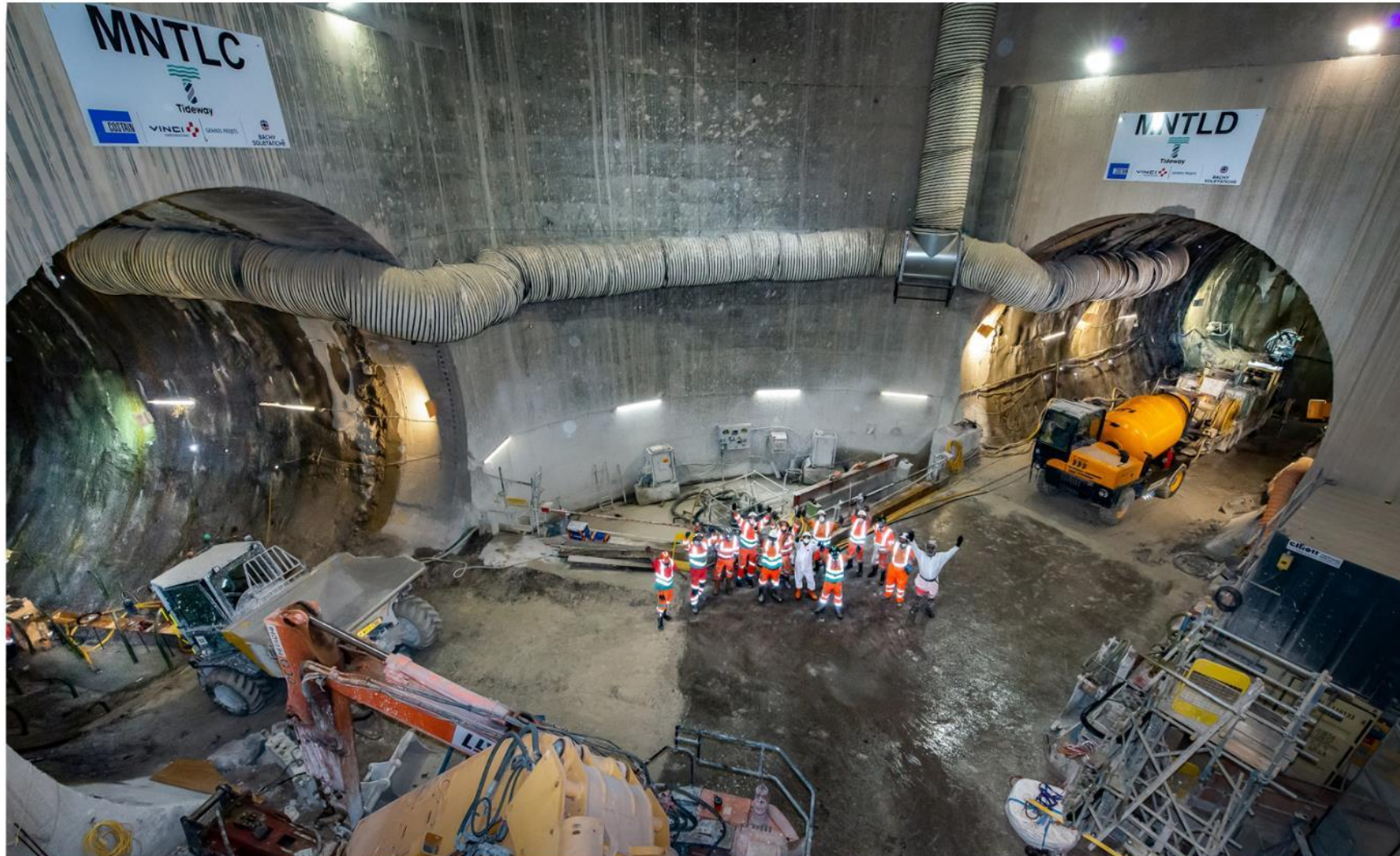


Tideway



MAIN TUNNEL

SCL ADIT CONSTRUCTION COMPLETE



'SELINA'

DELIVERY TO CHAWF



'SELINA'

LOWERING DOWN TO SHAFT BOTTOM

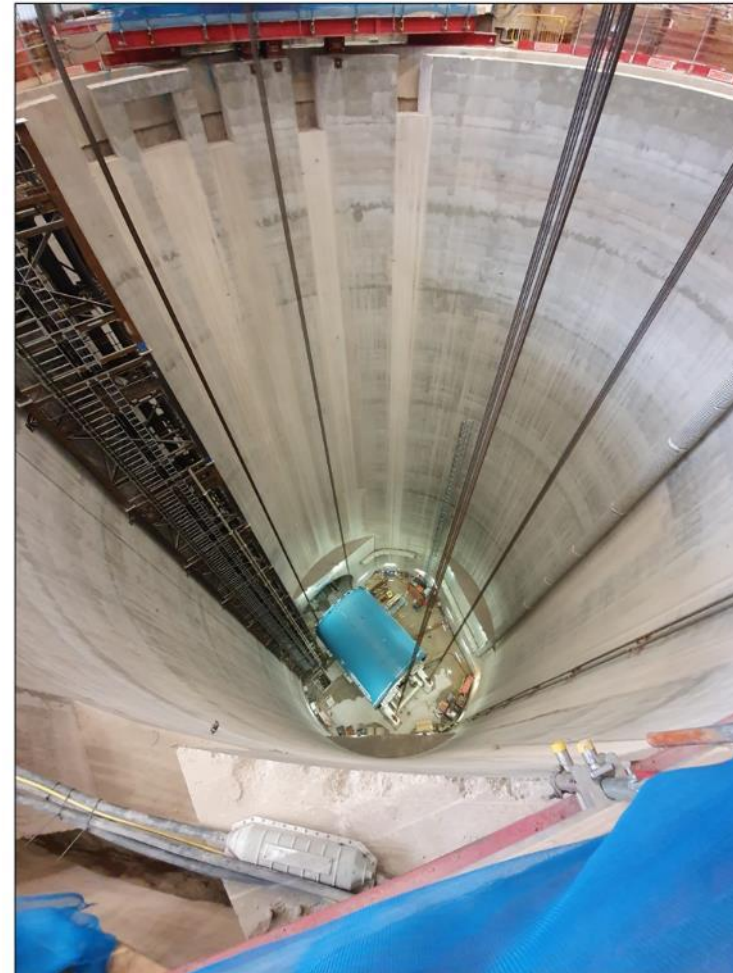


- TBM moved across the shaft top and lowered to the bottom on 28-09-2020 (4:50am to 3:45pm)



'SELINA'

LOWERING DOWN TO SHAFT BOTTOM



'SELINA'

PUSHED INTO THE LAUNCH ADIT



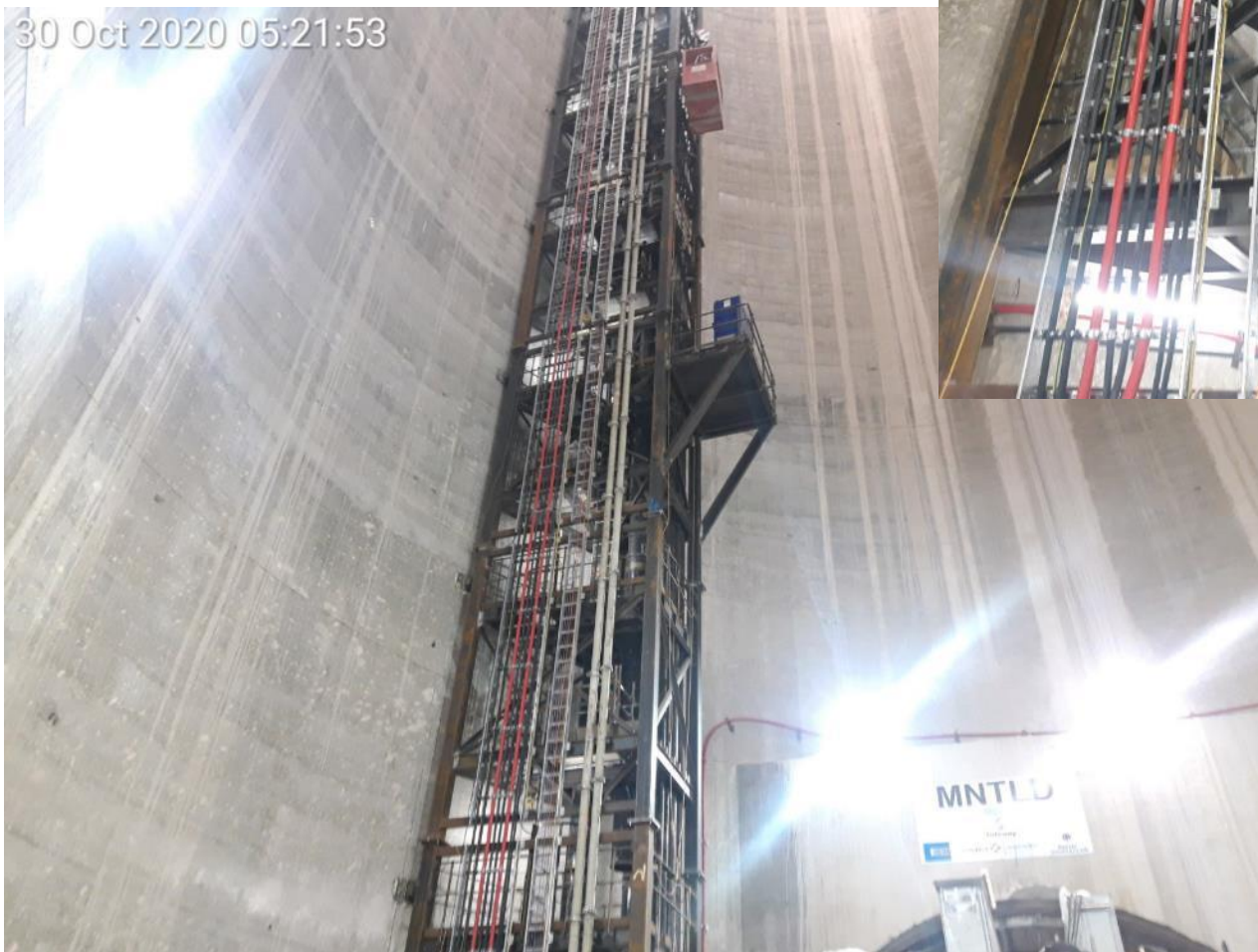
Tideway



TBM THRUST FRAME



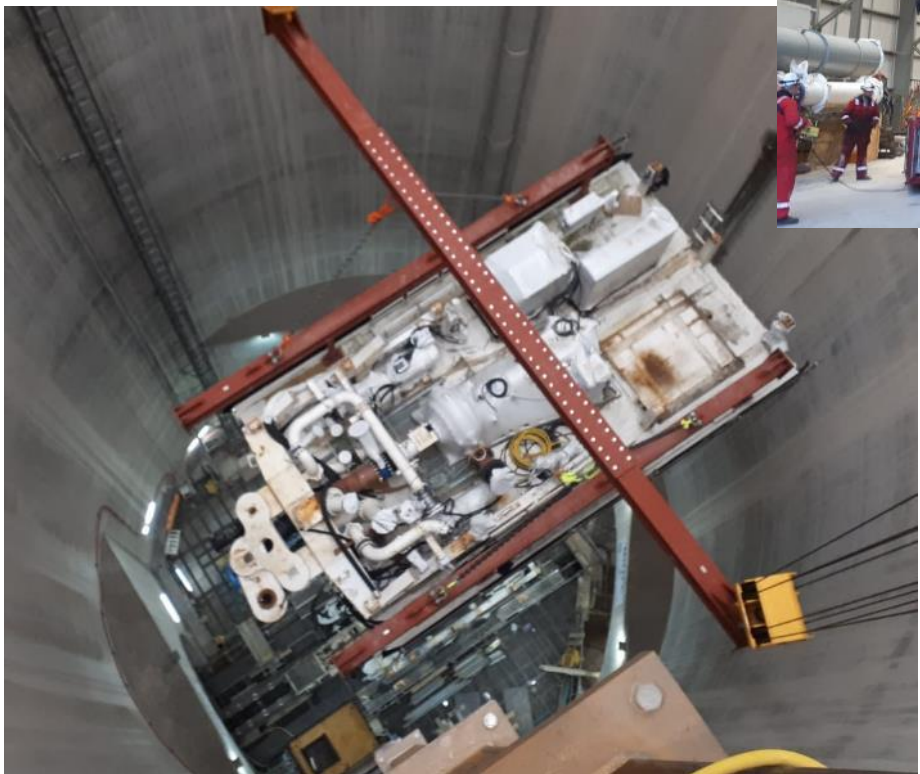
SHAFT WORKS



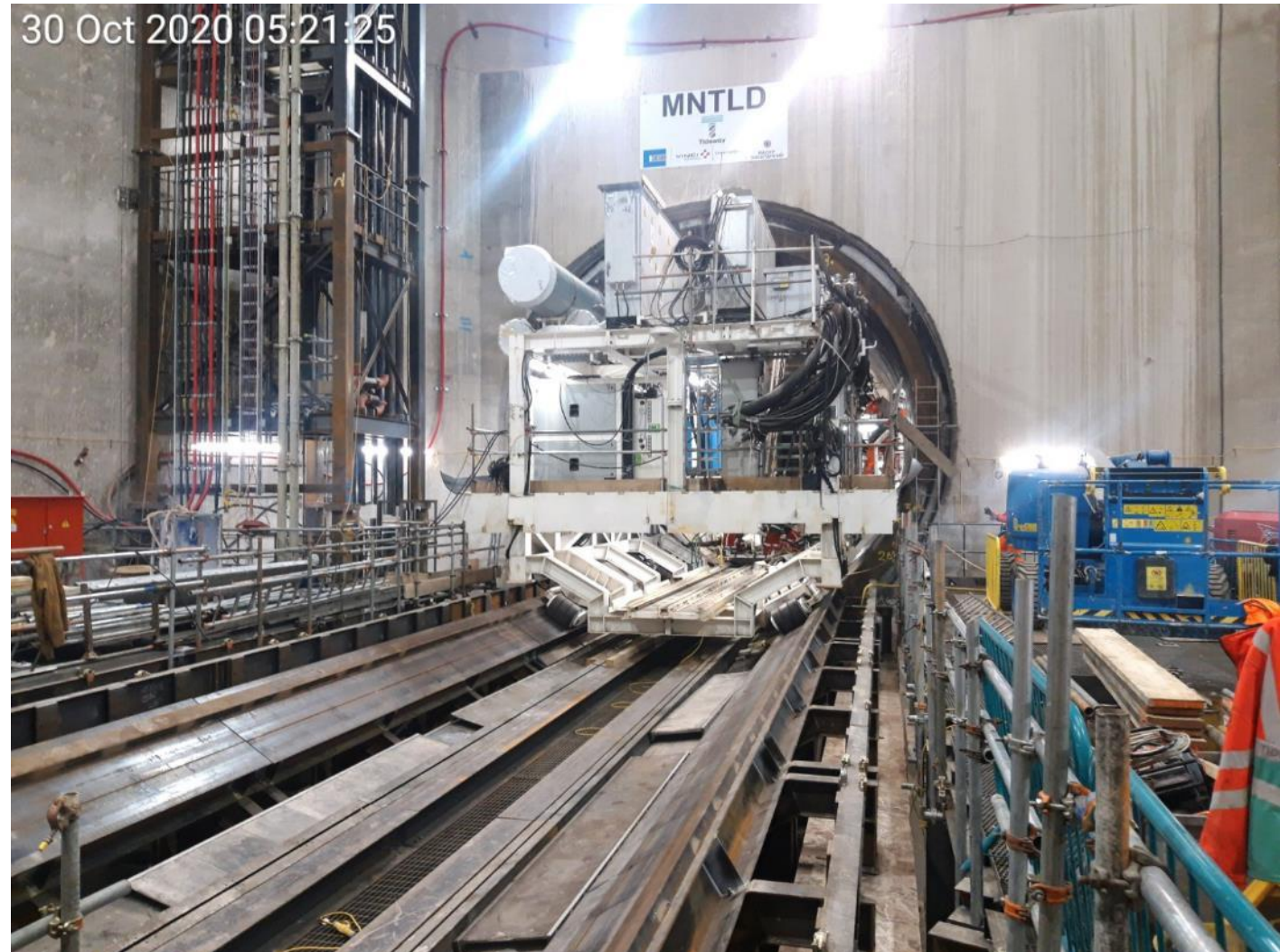
SHAFT WORKS



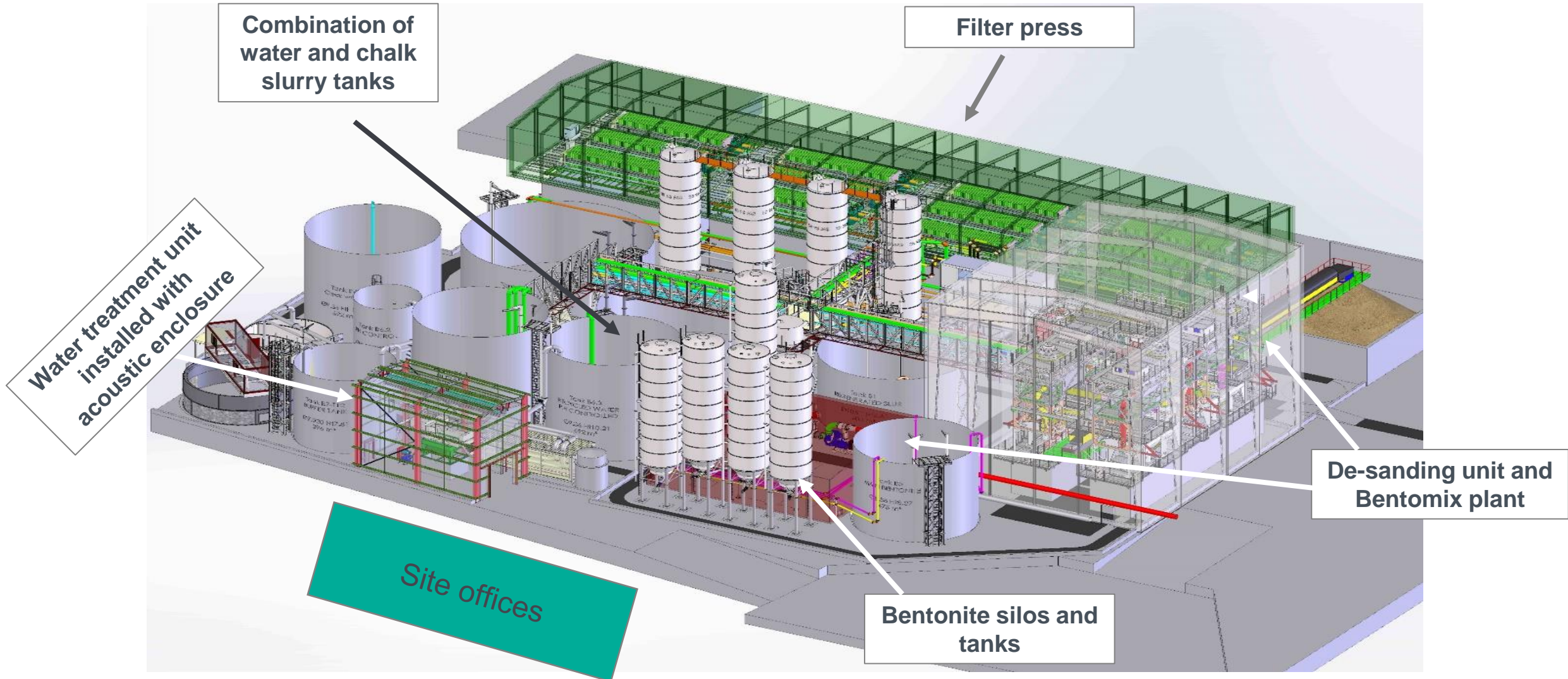
TBM ASSEMBLY



TBM ASSEMBLY



SLURRY TREATMENT PLANT



SLURRY TREATMENT PLANT



- **Changes to original design include:**
- **Shortest tanks closest to adjacent buildings, in the south west of the site**
- **Highest buildings located on the eastern side of the STP (in the middle of the site)**
- **Filter press building located north of Luna House, to provide acoustic shielding**
- **Inlets extended to be submerged**
- **Higher specification of acoustic attenuation (additional cladding added) on buildings, where possible**
- **Water tanks located adjacent to site hoarding**

SECTION 61 - OVERVIEW

Section 61 phase five for tunnelling works – approved by LB Southwark covers: October 2019 to October 2020

Permitted Site Working Hours

Standard Working Hours:

- 08:00 to 18:00 (Monday to Friday) and 08:00 to 13:00 (Saturday)

Extended Working Hours

- 18:00 to 22:00 (Monday to Friday). 08:00 to 17:00 (Saturday)
- General works limited to tidally influenced marine movements, lighting (task specific) and gantry crane movements within shaft enclosure

Continuous Working Hours (24/7)

Tunnelling and tunnel related activities such as;

- STP operation
- Shaft set-up for tunnelling, TBM install and launch

Mobilisation and demobilisation Hours •

- 07:00 to 08:00 and 18:00 to 19:00 (Monday to Friday). 07:00 to 08:00 and 13:00 to 14:00 (Saturday)
- 22:00 to 22:30 (Extended working hours activities) (Mon to Fri). 17:00 to 17:30 (Extended working on Saturdays)



Approved S61 for tunnelling works – more detail

This Section 61 covers:

Tunnelling

- The TBM will arrive by barge; then lowered into the shaft for tunnelling
- Tunnelling will be a continuous activity: 24 hours / 7 days a week, planned from Autumn 2020
- The slurry treatment plant will also run continuously to support tunnelling activities



TBM 'Selina'

Programme Overview	2020		2021									
	November	December	January	February	March	April	May	June	July	August	September	October
Tunnelling Set Up												
TBM Tunnelling												
Support Activities (Marine, Maintenance, etc.)												

	Standard Working Hours	(08:00 - 18:00) Monday to Friday, (08:00 - 13:00) Saturday
	Extended Working Hours	(08:00 - 22:00) Monday to Friday - Support activities (08:00 - 13:00) Saturday - (Support activities to 17.00)
	Continuous Working Hours	(00:00 - 00:00) Monday to Sunday

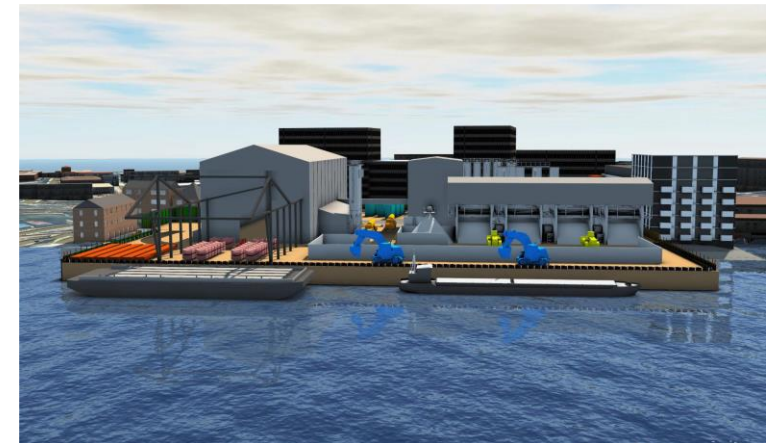
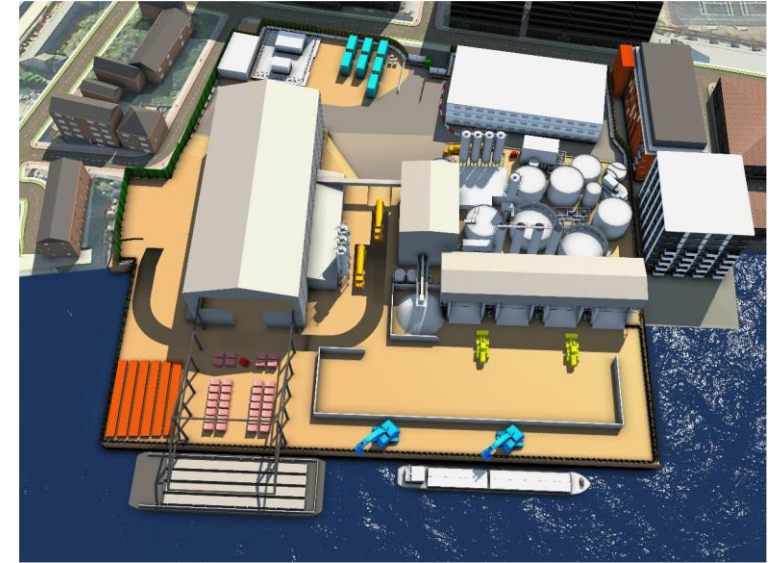
WHAT TO EXPECT DURING TUNNELLING

**Continuous working
inside the acoustic
enclosure: 24 hours / 7
days a week**

**Running of the slurry
treatment plant
(STP) continuously, to
support tunnelling**

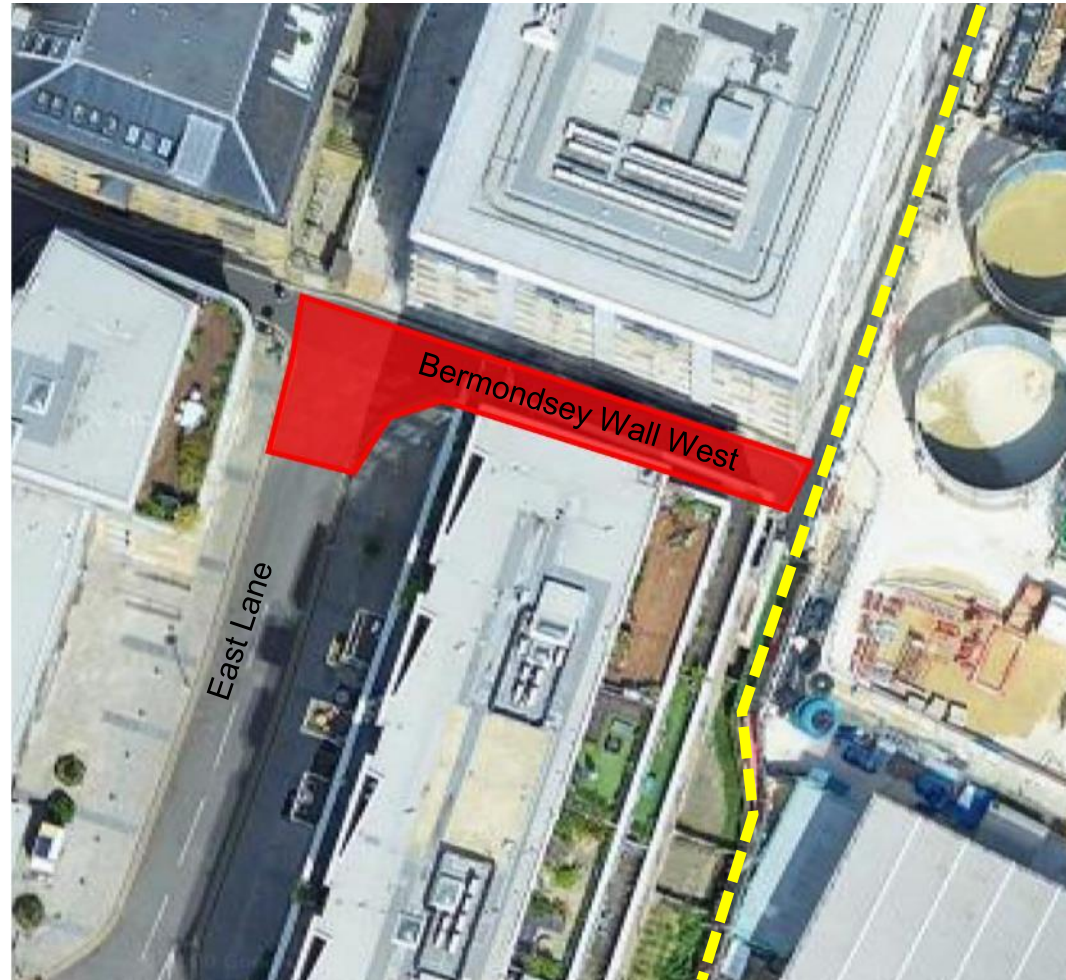
**Movement of treated,
tunnelled material from
the STP into muck bins**

**2 loading shovels, up to
22:00 Monday to
Saturday**

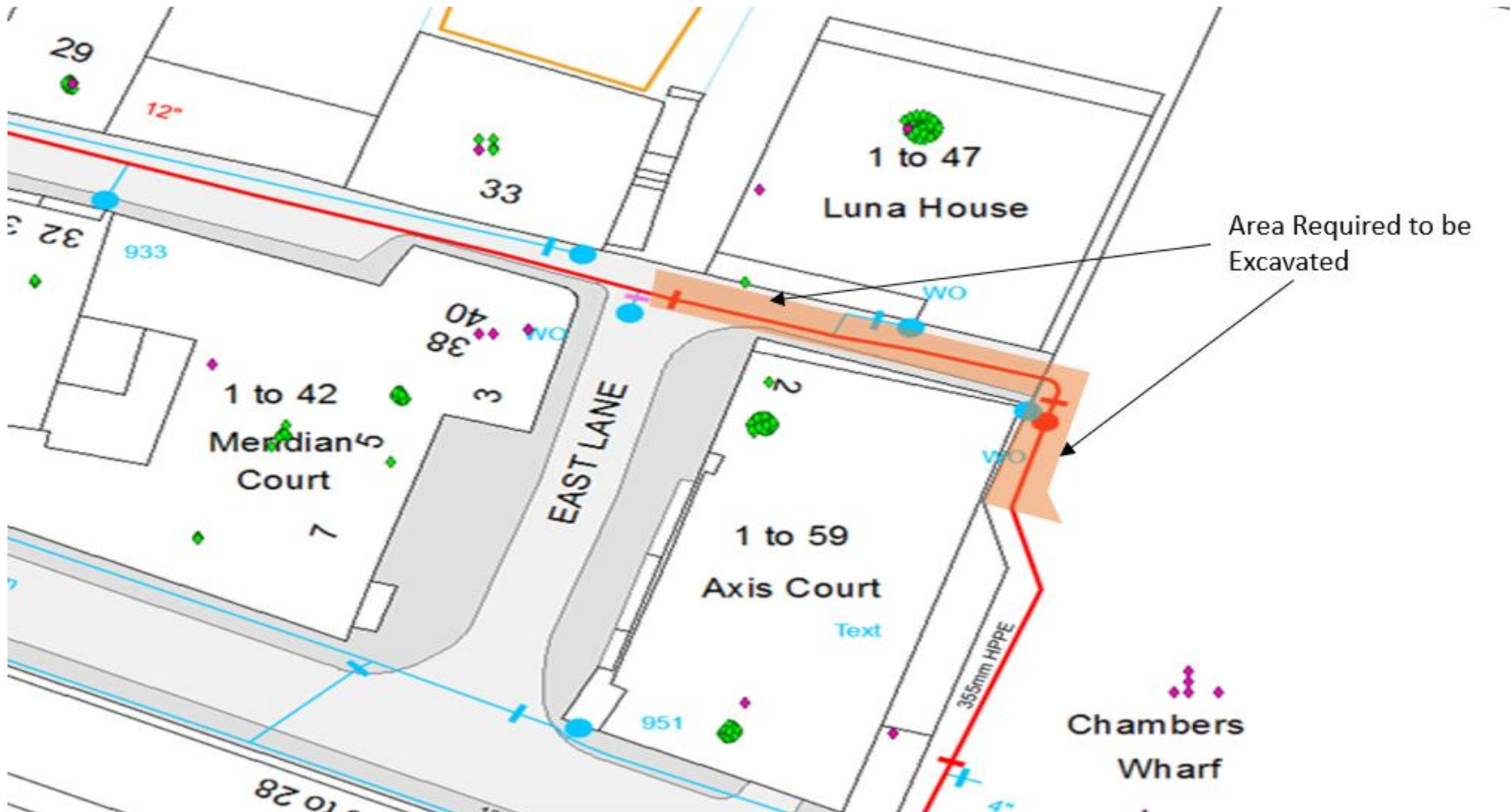


UPCOMING WORKS

- Water Main pipe replacement



Water Main pipe replacement Excavation Area



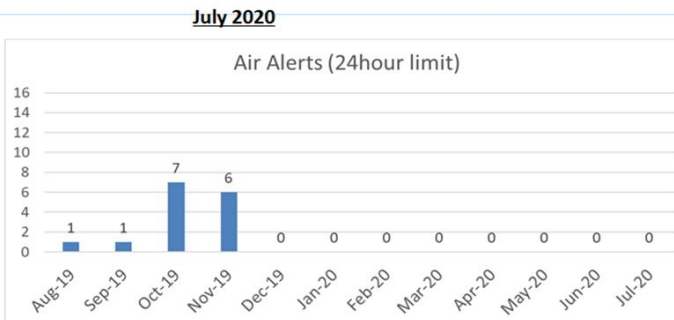
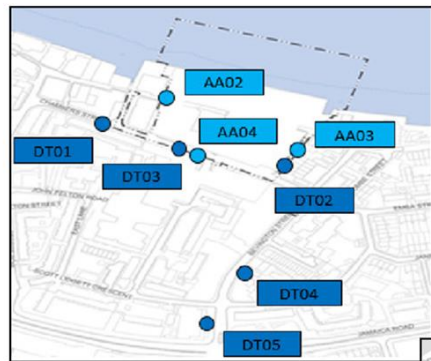
NOISE AND AIR QUALITY



Tideway



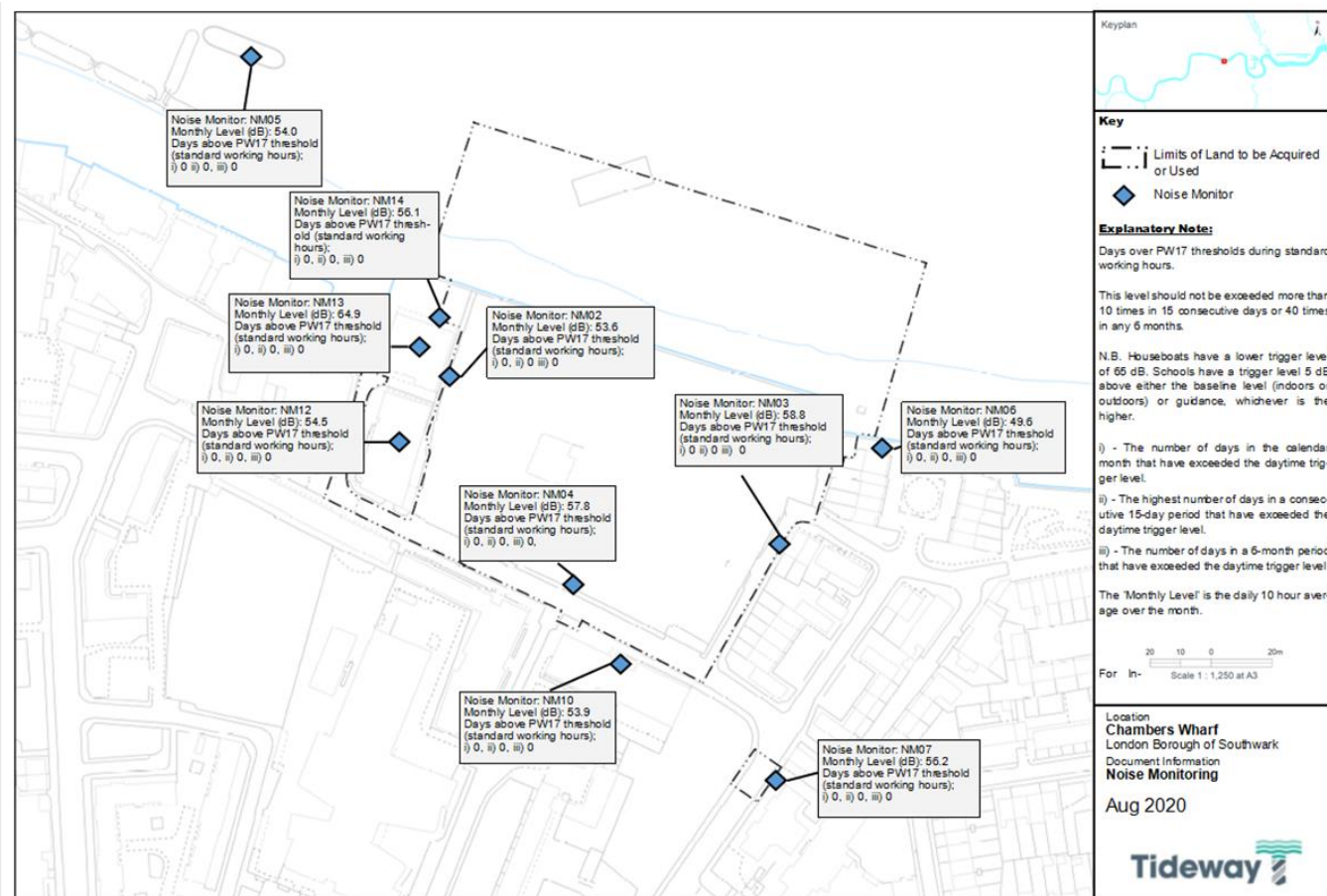
AIR AND NOISE MONITORING JULY



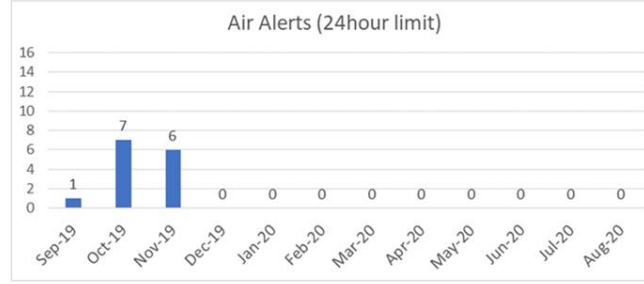
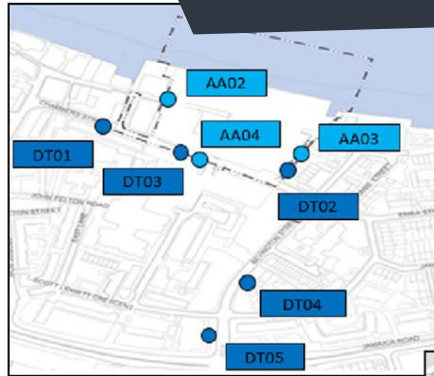
Location	UK Air Quality Objective	NO ₂ µg/m ³	Mean value for NO ₂ µg/m ³	Annual mean value for NO ₂ µg/m ³ (with bias correction)
DT1	40	no data	30.06	28.25
DT2		no data	27.00	25.38
DT3		no data	27.14	25.51
DT4		no data	29.92	28.12
DT5		no data	36.52	34.33
DT6		no data	33.17	31.18
Monitoring period			Monitoring period	
03/06/2020	-	01/07/2020	03/07/2019	- 01/07/2020

Please note that NO₂ pollutant concentration results are presented one month in arrears in order to provide data for the site and its immediate environs without having to wait for the laboratory analysis results, which usually takes 3 to 4 weeks to receive. No data since 04/03/2020, due to COVID-19. Diffusion tube monitoring has restarted on 29/07/2020.

Total Allowable Alerts	35 per year
Total May Alerts	0
Number of Alerts (12-month rolling)	14



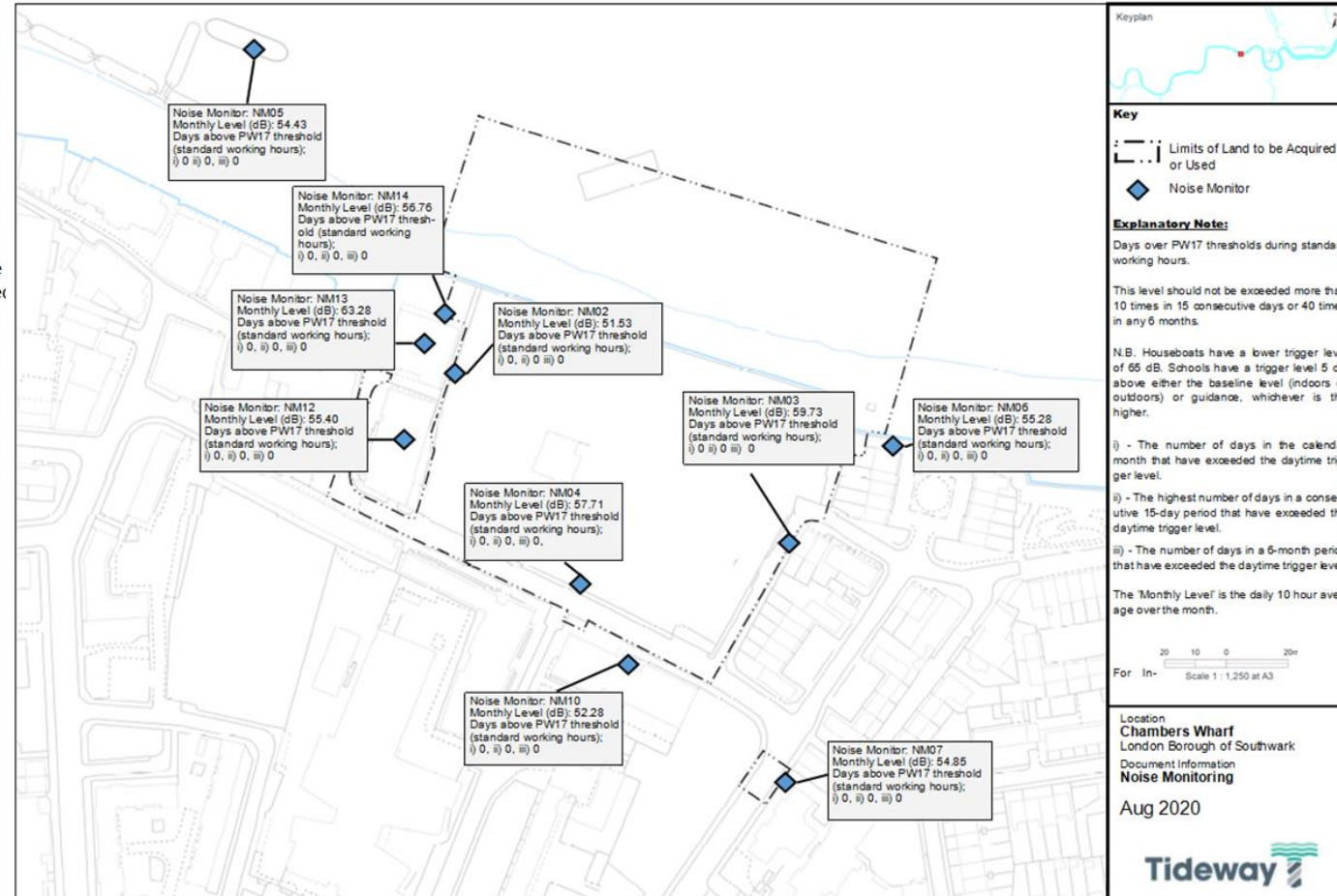
AIR AND NOISE MONITORING AUGUST



Location	UK Air Quality Objective	NO ₂ µg/m ³	Mean value for NO ₂ µg/m ³	Annual mean value for NO ₂ µg/m ³ (with bias correction)	
DT1	40	17.06	29.50	27.73	
DT2		14.68	26.04	24.48	
DT3		13.71	26.81	25.20	
DT4		-	29.92	28.12	
DT5		-	36.52	34.33	
DT6		20.36	32.45	30.51	
Monitoring period			Monitoring period		
04/03/2020	-	29/07/2020	07/08/2019	-	29/07/2020

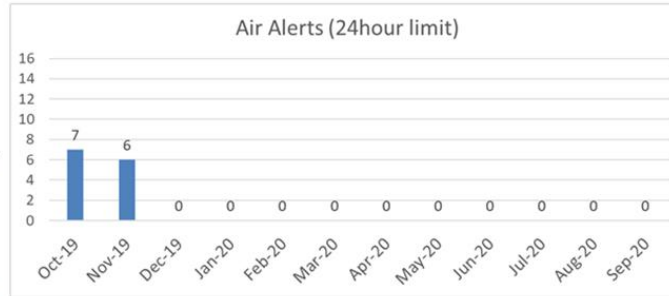
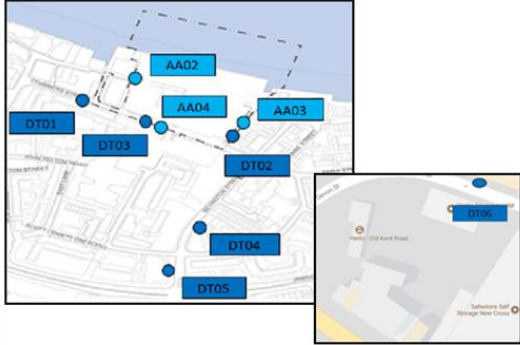
Please note that NO₂ pollutant concentration results are presented one month in arrears. Tubes were exposed for longer than the recommended time. Results may be compromised due to COVID-19 and access.

Total Allowable Alerts	35 per year
Total May Alerts	0
Number of Alerts (12-month rolling)	14



AIR AND NOISE MONITORING SEPTEMBER

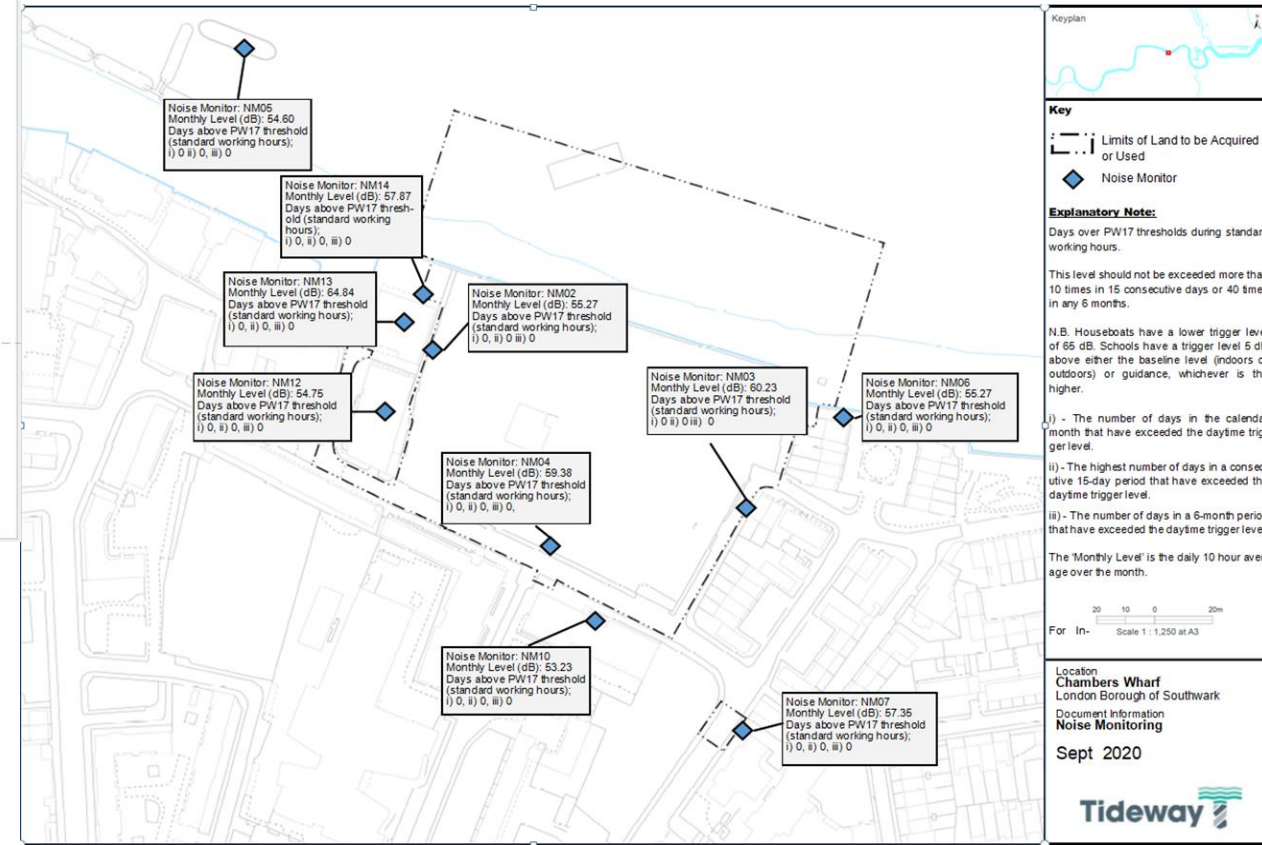
Sept 2020



Location	UK Air Quality Objective	NO ₂ µg/m ³	Mean value for NO ₂ µg/m ³	Annual mean value for NO ₂ µg/m ³ (with bias correction)
DT1	40	24.37	28.28	26.59
DT2		20.21	25.63	24.09
DT3		20.31	27.44	25.79
DT4		20.20	30.03	28.22
DT5		28.12	36.26	34.09
DT6		-	32.45	30.51
Monitoring period			Monitoring period	
29/07/2020	-	02/09/2020	04/09/2019	- 02/09/2020

Please note that NO₂ pollutant concentration results are presented one month in arrears.

Total Allowable Alerts	35 per year
Total May Alerts	0
Number of Alerts (12-month)	13



LEGACY



Tideway



MAKE A DIFFERENCE

Happy 5th Birthday Tideway



To mark Tideway's 5th birthday, the 'Make a Difference' campaign was launched on 24 August. Tideway colleagues along with friends and families raised thousands of pounds for charity



The Tunnel Challenge –

- Raised over £5,000 In just five weeks!
- 14 teams, comprising 64 colleagues from across Tideway, collectively walked, ran, cycled, rowed and swam over 15,020km or 600 lengths of the Tideway Tunnel (in simpler terms - just over 1/3 of the way around the globe!).

LEGACY THE NEXT GENERATION



Volunteering hours

People - including Skills and Employment

Community Relations

Innovation and Technology

The 5000 word CVB training case study developed by
UCL has been approved

Community Investment

London Youth Rowing (LYR)
ACTIVE ROW aims to get children active
through indoor and outdoor rowing



BELIEVING IN OUR APPRENTICES

Tideway Talk and Communications

Residential Complaints

CELEBRATING INTERNATIONAL WOMEN'S DAY



Tideway East supported a of panel discussions with 120
colleagues and guests to explore the changing culture for
women in the construction industry.



STEM BOAT TOUR
BRINGING CLASSROOM TEACHING TO LIFE

TIDEWAY EAST HIGHLIGHTS

Skills and Employment Forum October 2020



Apprentice results:

Some exceptional results with a 93% and four above 70%.
Tunnelling apprentices progressing to final assessment.
Some great feedback on their commitment.

Women In Construction:

Virtual mentoring - A range of staff volunteers were involved to support during lockdown and beyond.

Increase in local employment

This quarter we reached our local employment targets

Governor role :

Two East staff have roles as Chair of Governors supporting local borough schools. Commitment to dealing with COVID shut-down, re-opening and exam arrangements, affects on staff and pupil mental welfare.

LDE UTC in top 1% (UK) for technical results.

Recruitment reopen:

Tunnelling contractor JGL, liaising directly with East London boroughs, had 30 applications for 2 entry level tunnelling vacancies.

THAMES 21 LITTER SURVEY



PLOGGING!!!!!!

The word plogging is an English-Swedish combination of jogging and plocka upp, which means “pick up” in Swedish



Tideway

We will soon start plogging around site, so please contact Helpdesk if you want to get involved in our plogging sessions around Earl Pumping station.



“SAFE” by choice!

Contact US

- If you do have any questions or enquiries, please contact the Tideway Helpdesk:
- Telephone: **0800 030 80 80**
- Email: **Helpdesk@Tideway.London**



THANK YOU



Tideway

RECONNECTING LONDON WITH THE RIVER THAMES

#SuperSewer

www.tideway.london