

# HAMMERSMITH PUMPING STATION

Community Liaison Working Group

Tuesday 16 February



Tideway





**WELCOME**

**John Corcoran, Section Manager**



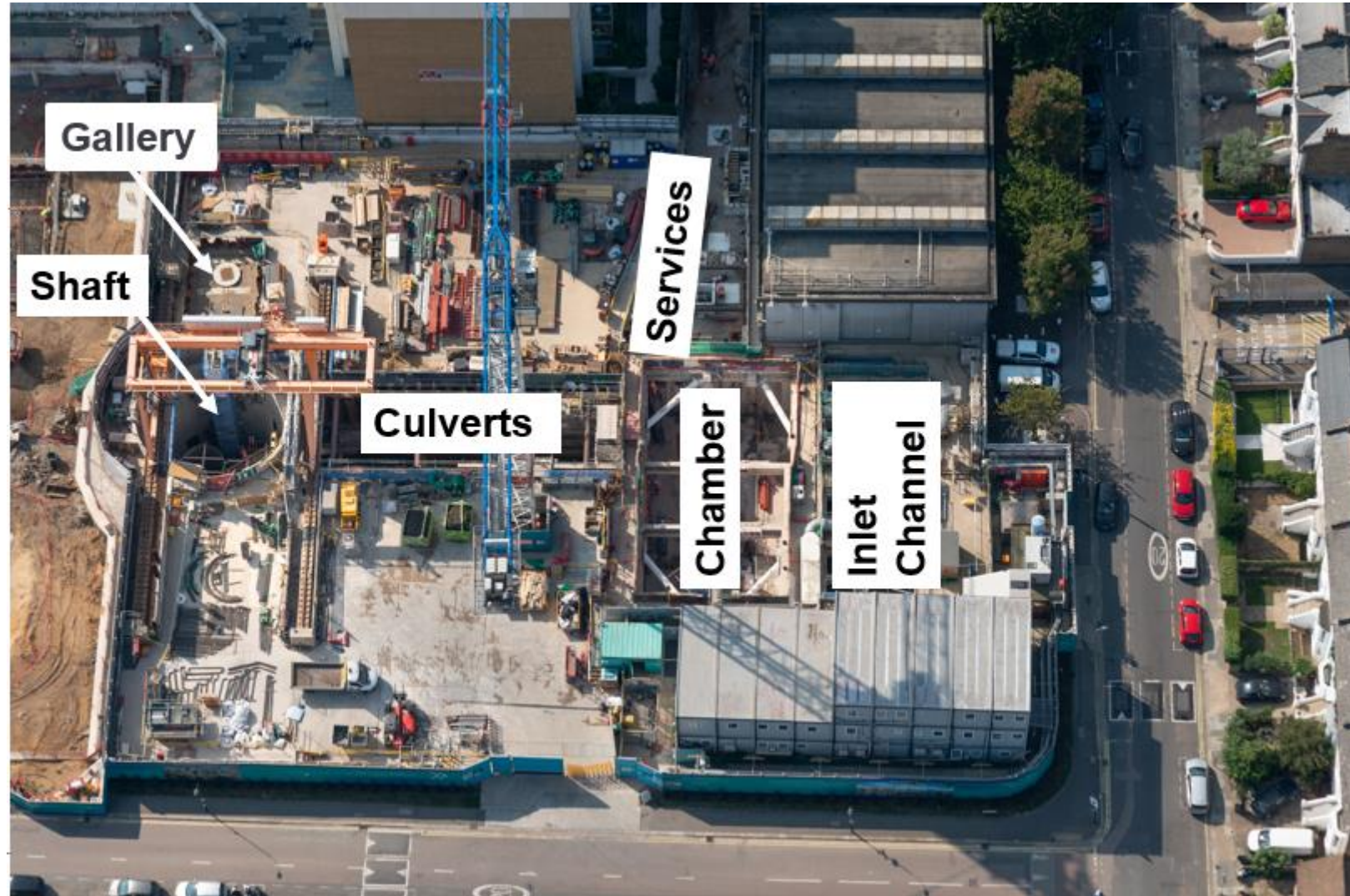
## Works Update

- **HAMPS tunnel** – Completed
- **Connection with main tunnel** – In progress
- **Shaft** – Vortex Generator installation completed



## Works Update

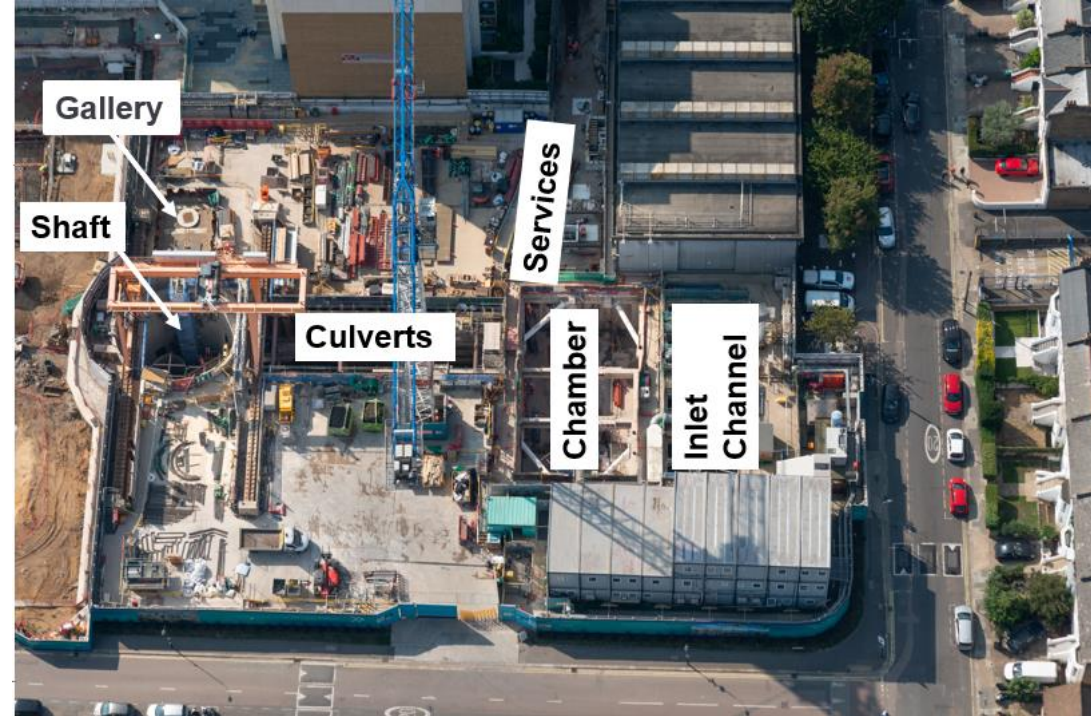
- **Shaft** – Completing internal concrete structures
- **Gallery** – Excavation completed, building concrete structure
- **Culverts** – Excavation completed, building concrete structures
- **Chamber** – Building internal concrete walls & landings
- **Inlet** – Connecting it to the Chamber
- **Services** – Installation of numerous services in progress





# Shaft & Tunnel Construction

- Shaft internal concreting – Upper walkways cast





## Shaft & Tunnel Construction

- Stainless steel vortex installed and now suspended off a bridge





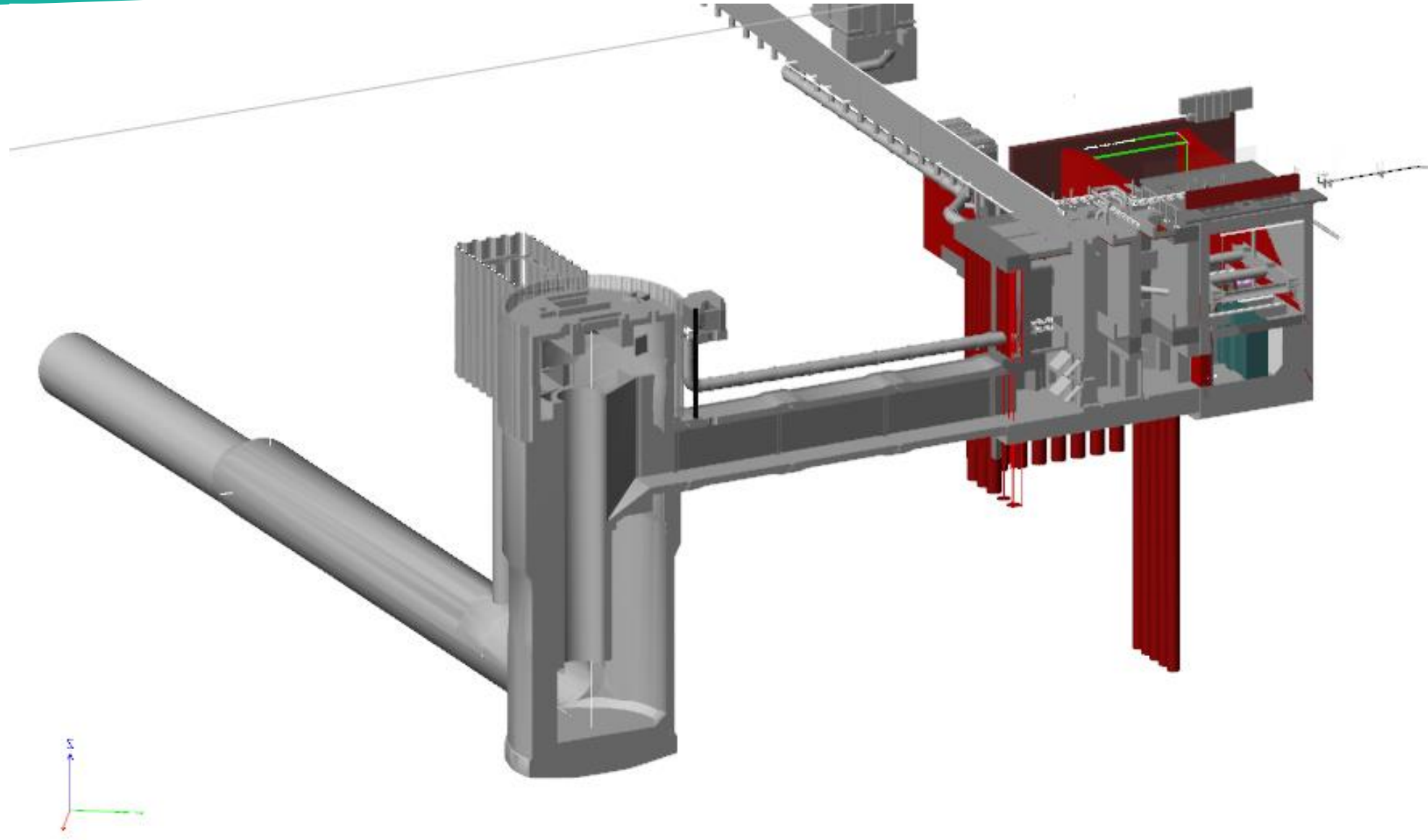
## Shaft & Tunnel Construction

- Stainless steel vortex generator
- Concreted into position within the shaft



# Culverts

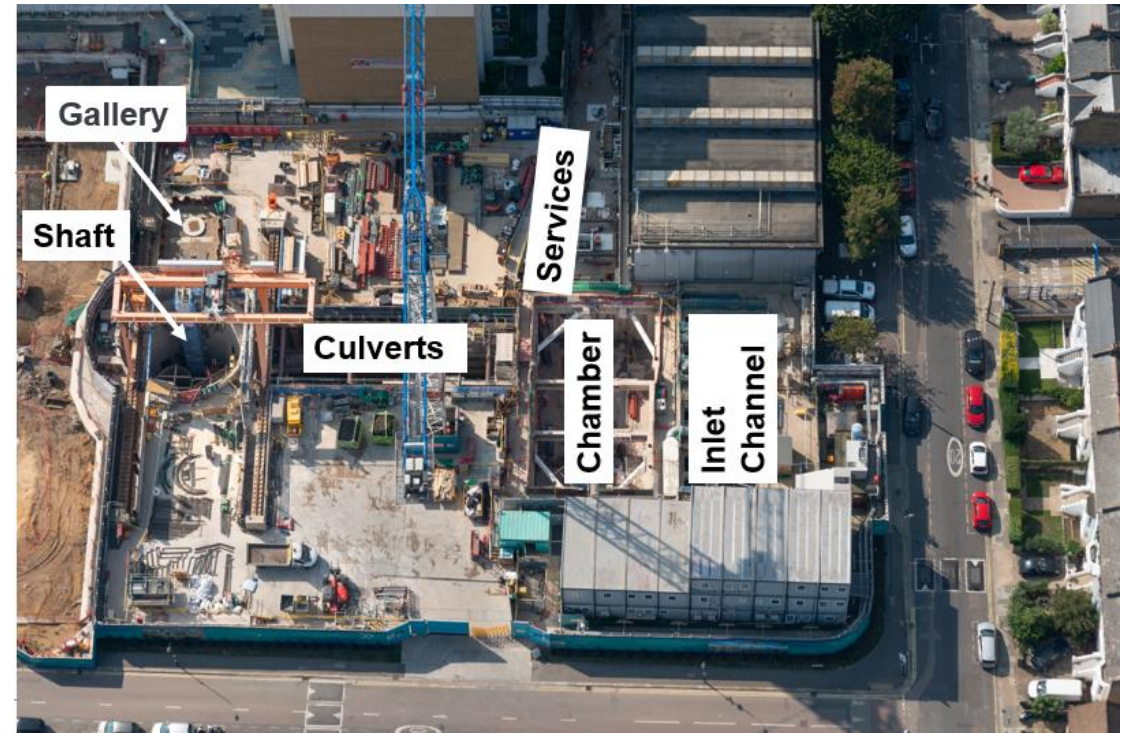
- The Culverts connect the Chamber to the shaft





# Culverts

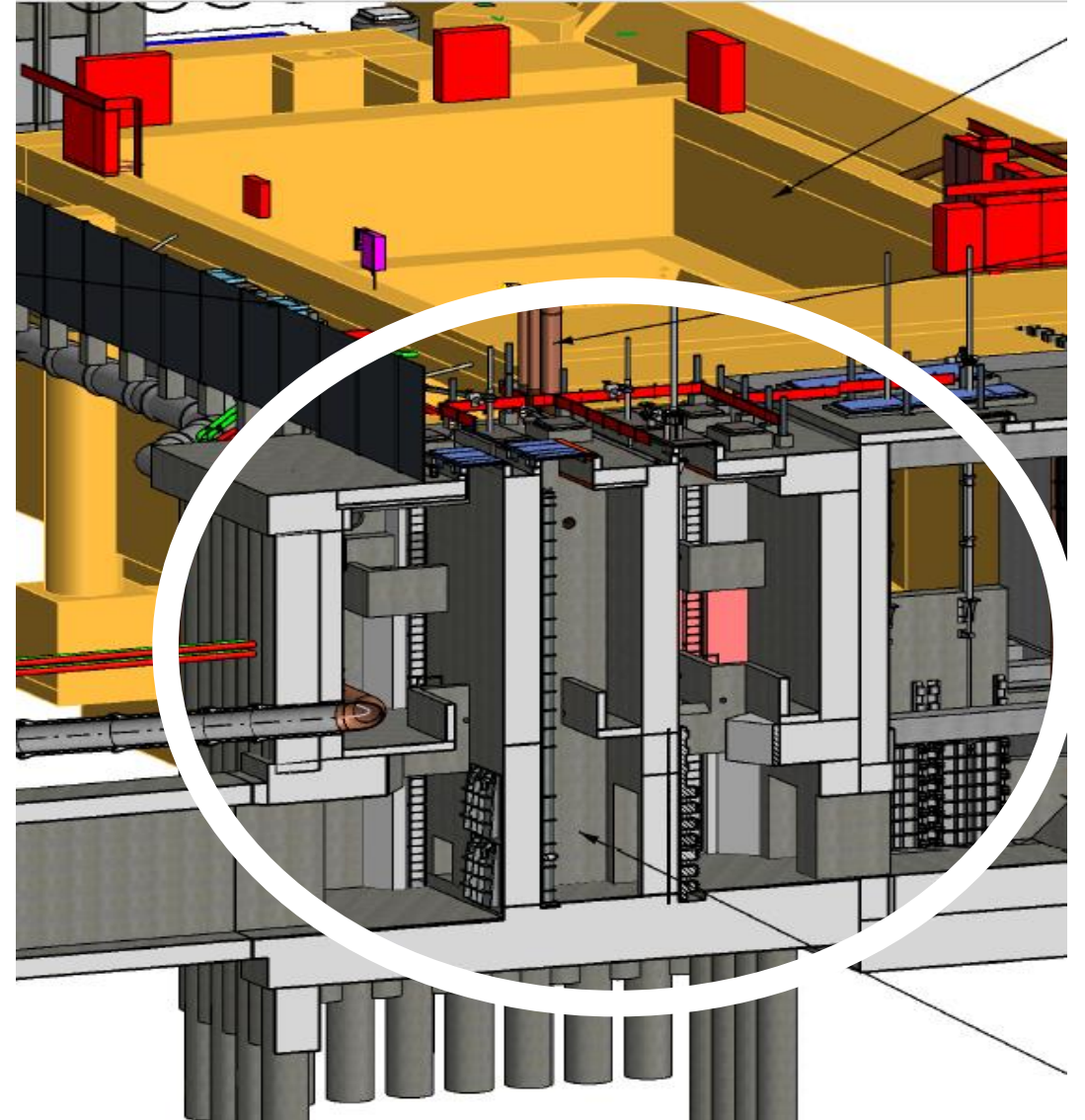
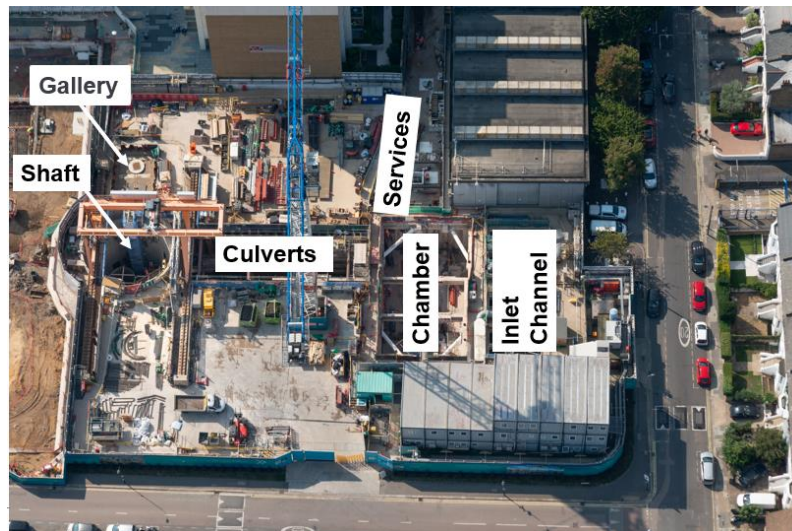
- Casting of concrete structure in progress
- Connections to the shaft and chamber completed





# Interception Chamber

- All internal walls completed
- Casting of internal access walkways in progress
- Preparing to cast the roof slab in April 2021
- Numerous Mechanical & Electrical Installation now required to complete the works

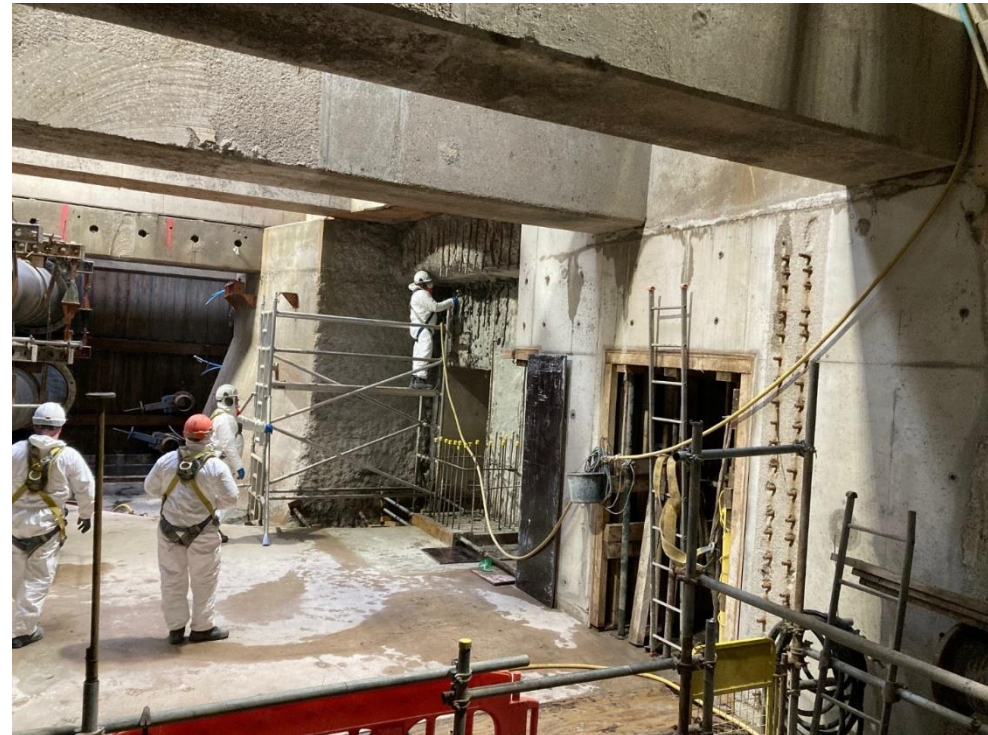
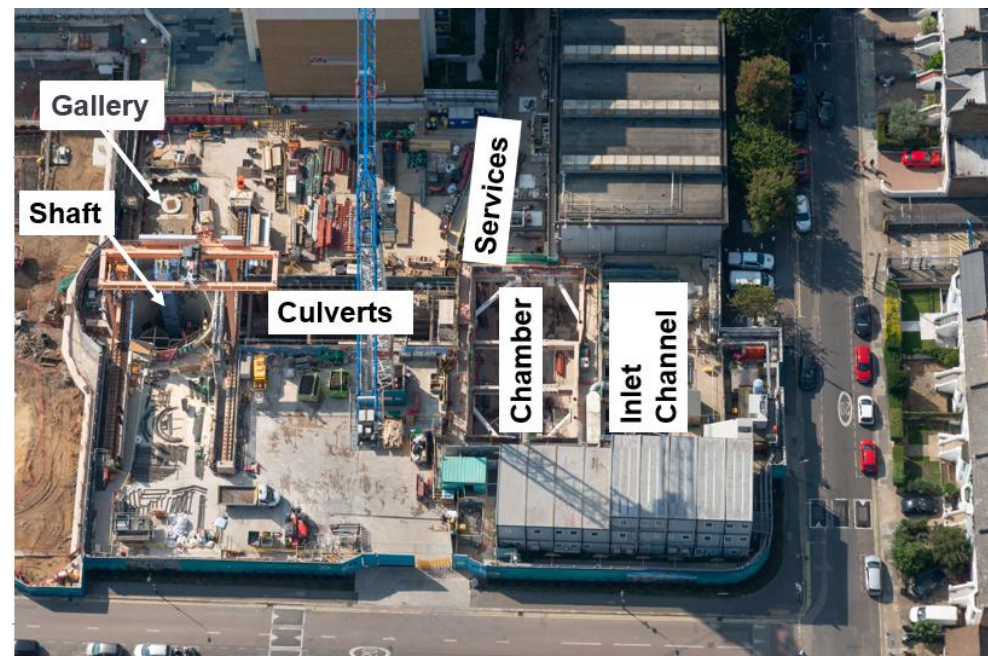




## Inlet Channel Works

- Forming connection to the Interception Chamber

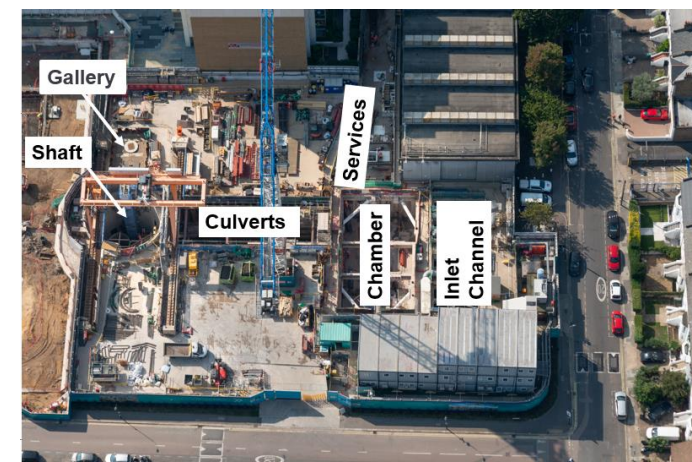
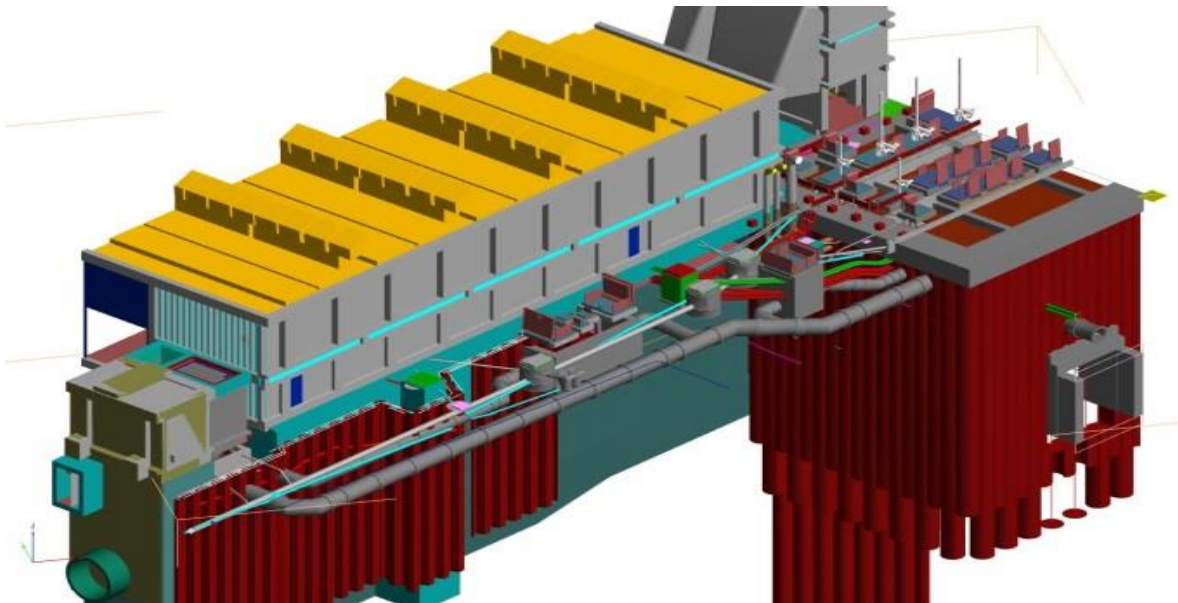
Inlet Channel – Existing wall to be cut out and new wall cast





## External MEICA Services

- We are continuing to construct new services around the Thames Water Pumping station
- Backfilling of the area is in progress as the services are completed
- Construction of the upper level of the Venturi Chamber will start shortly





## Next 4 Months

	Jan	Feb	Mar	Apr	May	Jun	Jul
Drop Shaft remaining works incl cover, backfill	Active	Active	Active	Active	Active	Active	Active
Existing Inlet channel and roof works	Active	Active	Active	Active	Active	Active	Active
Culvert & De-aeration chambers construction	Active	Active	Active	Active	Active	Completed	Completed
Site-wide Underground Services, Electrical	Active	Active	Active	Active	Active	Active	Active
Interception Chamber - Concrete works	Active	Active	Active	Active	Completed	Completed	Completed

- Core working hours 8am-6pm Monday-Friday and 8am-1pm Saturday
- One hour start up and shutdown periods either side of working hours

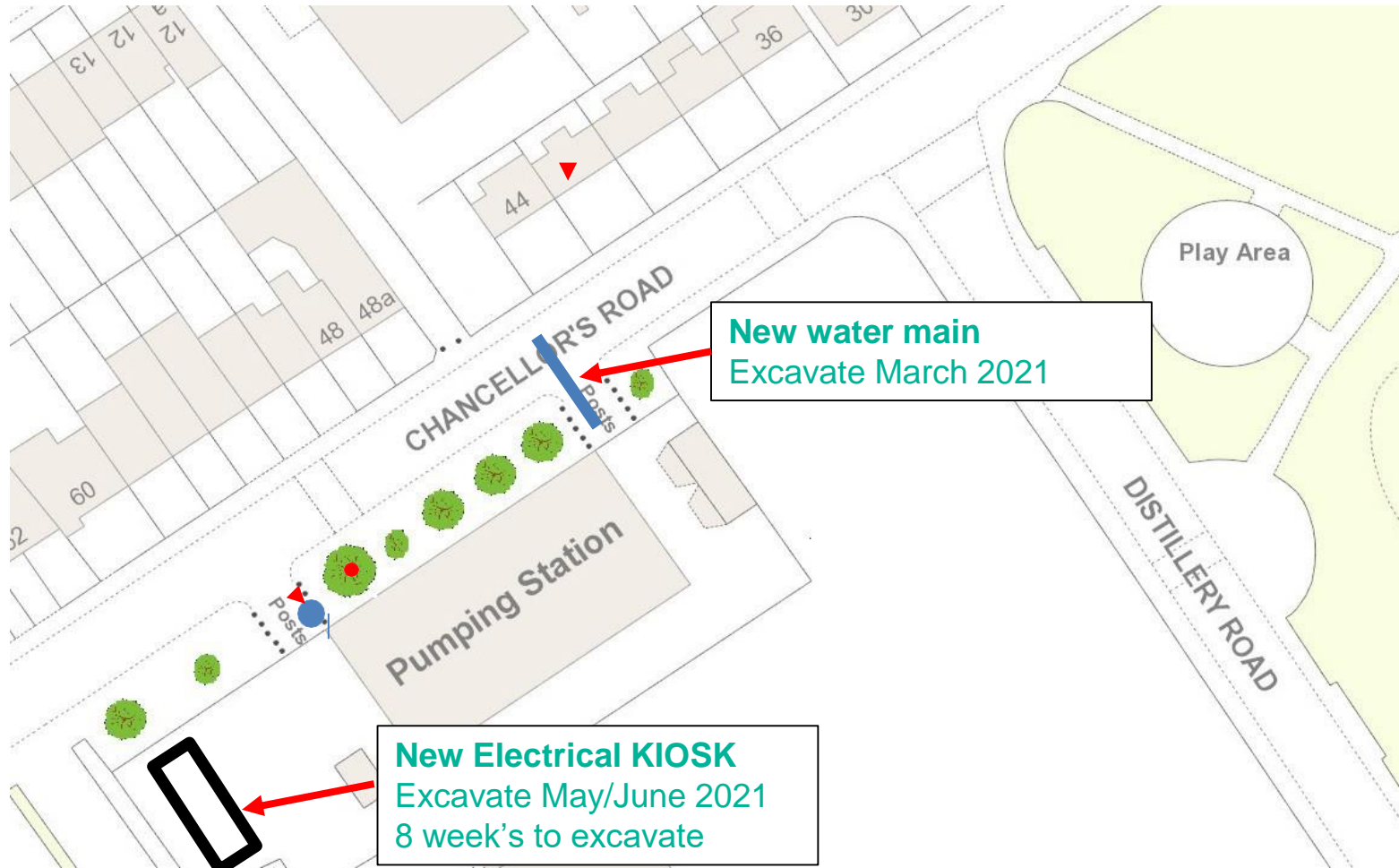
## Nightshift working

- Monday to Thursday 18:30-05:00
- Between 12 - 15 workers – No change from when the nightshift started in Sept 2020
- All works carried out a minimum of 15m below ground
- Initially agreed with council to run to 18<sup>th</sup> Dec 2020, and then review
- WhatsApp Resident's Group has been beneficial in resolution of any issues
- The same dedicated nightshift-only supervisor remains in place
- Nightshift will be completed before the end of April 21

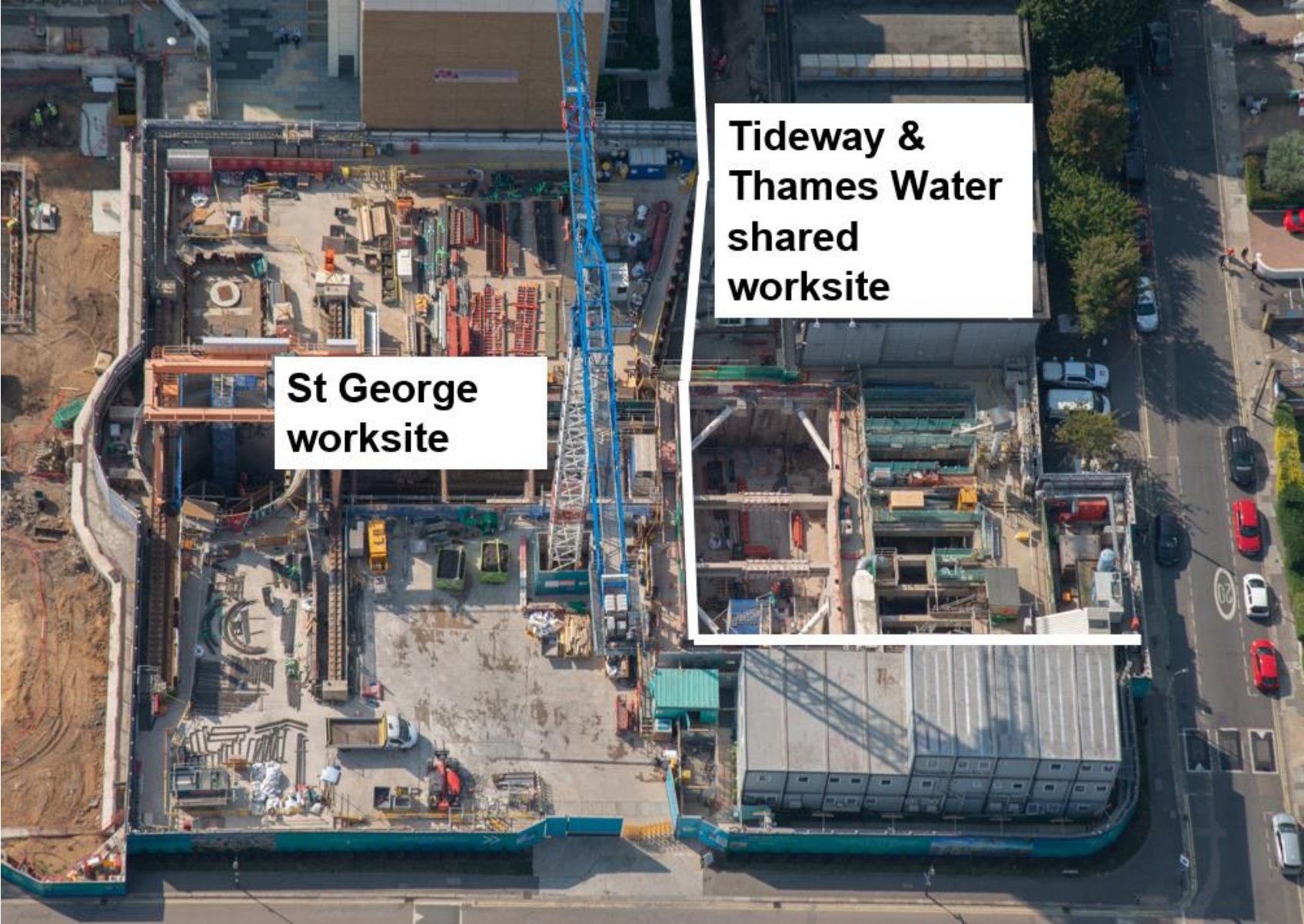


# Rising Main & External Connections Update

- Water connection



**Handover of part of site to  
St George – July 2021**



**St George  
worksite**

**Tideway &  
Thames Water  
shared  
worksite**



## Above Ground Design Approval

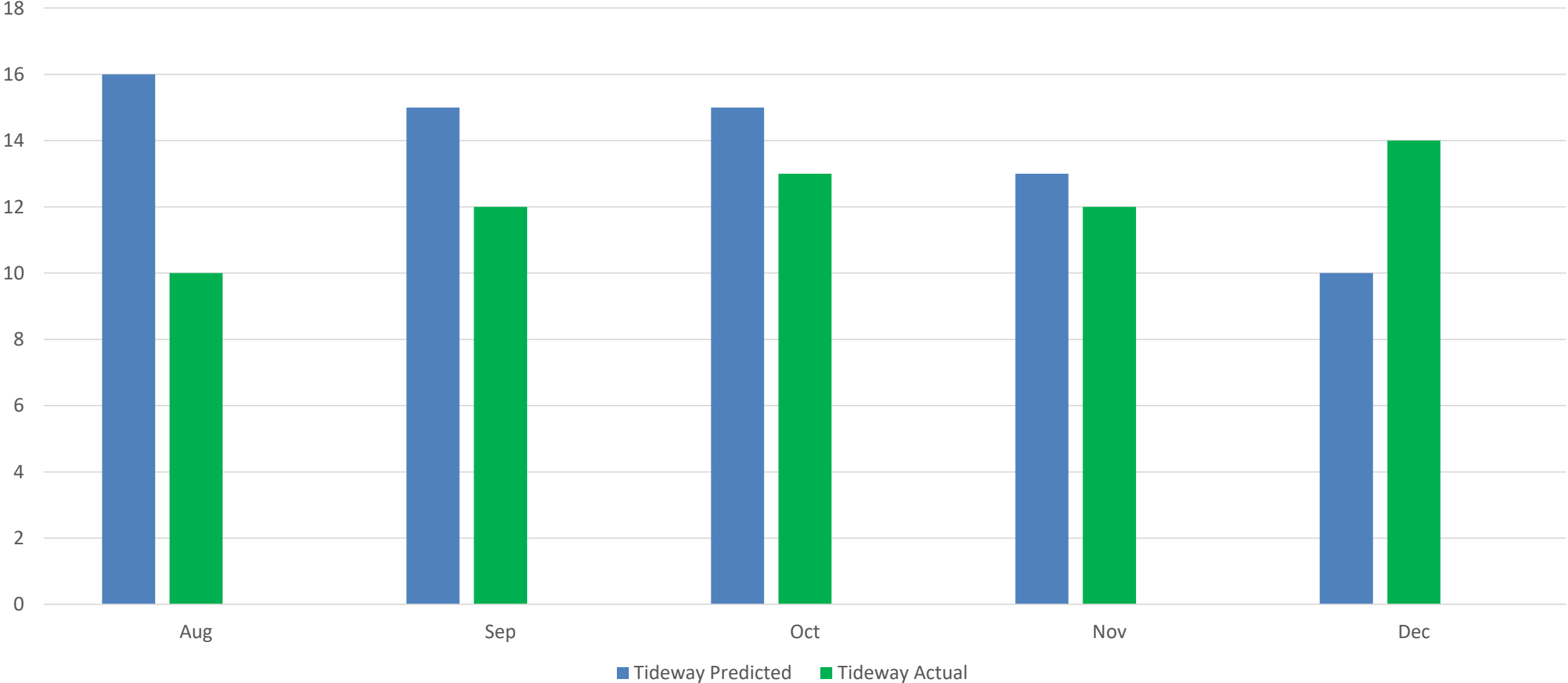


- Pumping Station artwork design approved in September 2019.

- Approval received from the London Borough of Hammersmith & Fulham for the permanent above ground design in April 2019
- The approval covers the new ventilation structures, boundary walls & fencing, hard surfacing, surface water drainage system and boundary wall design.



# Predicted & Actual Vehicle Movements (2020)







**COMMUNITY  
ENGAGEMENT**

**Katie Ashton, Communications Manager**

## Community Engagement

3 x Information notice sent out since last meeting for:

- 1 x abnormal load delivery
- 1 x extended working hours
- 1 x Christmas Shutdown

95 general enquiries and complaints since July 2020

- 42 x noise and vibrations
- 12 x lighting
- 3 x air quality
- 38 x general project (includes settlement, virtual meetings requests, locos in tunnels)

All enquiries have been responded to within 24 hours (where possible)



**Call:** 08000 30 80 80

**Email:** [helpdesk@tideway.london](mailto:helpdesk@tideway.london)

**Write to:** Freepost TIDEWAY



**0800 316 9800**

Available 24 hours, 7 days a week to answer all enquiries & complaints related to the operations and maintenance of the site



## How To Make A Claim if Affected By Tideway's Work

### Who do I go to for advice?

Independent Advisory Service (IAS) Helpline for independent advice:

- 0800 917 8845 or [info@tidewayias.co.uk](mailto:info@tidewayias.co.uk)
- Tideway's Compensation & Mitigation Lead, Louise Walsh, for personal assistance and advice
  - Helpdesk: 08000 30 80 80 / [helpdesk@tideway.london](mailto:helpdesk@tideway.london) or
  - Direct: 07971 077165 / [louise.walsh@tideway.london](mailto:louise.walsh@tideway.london)

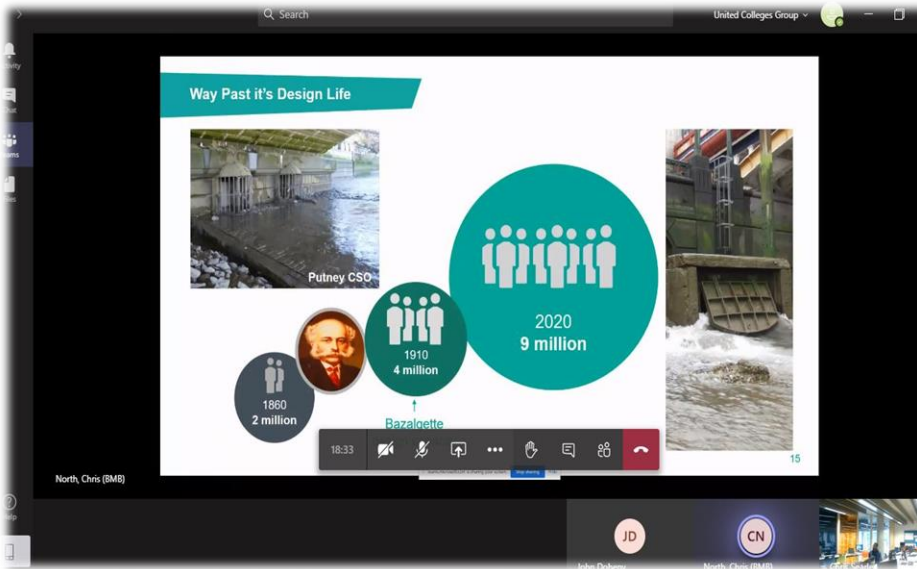
### How do I submit my claim?

Louise can submit your claim to the Independent Compensation Panel (ICP) on your behalf, or you can submit your claim direct to the ICP: [admin@tidewayicp.london](mailto:admin@tidewayicp.london)

The IAS can send you a claim form, or you can download the form off the Tideway website: [www.tideway.london/help-advice/compensation-information/Independent-Compensation-Panel](http://www.tideway.london/help-advice/compensation-information/Independent-Compensation-Panel)

# Community Investment

- Our community investment activities are continuing when we are able to undertake them safely
- Please contact us if you are aware of an opportunity or community group that we could help





## How To Stay Up To Date

# INFORMATION SHEET

Ref : 2140-TDWAY-TTUN-990-ZZ-Report-700004  
March 2020



### Information Sheets

## ACTON STORM TANKS

Community Liaison Working Group  
Tuesday 4 February 2020



### Community Liaison Working Group Meeting's



### Quarterly Newsletter



### Monthly 'Virtual Drop-In' Every First Tuesday

Follow us on social media:

[@TidewayLondon](https://www.instagram.com/tidewaylondon/)



[en-gb.facebook.com/TidewayLondon/](https://en-gb.facebook.com/TidewayLondon/)



[www.instagram.com/tidewaylondon/](https://www.instagram.com/tidewaylondon/)



[www.linkedin.com/company/tideway-london/](https://www.linkedin.com/company/tideway-london/)



[twitter.com/TidewayLondon](https://twitter.com/TidewayLondon)

If you would like to be added to our mailing list for works updates/notifications, email [helpdesk@Tideway.London](mailto:helpdesk@Tideway.London)

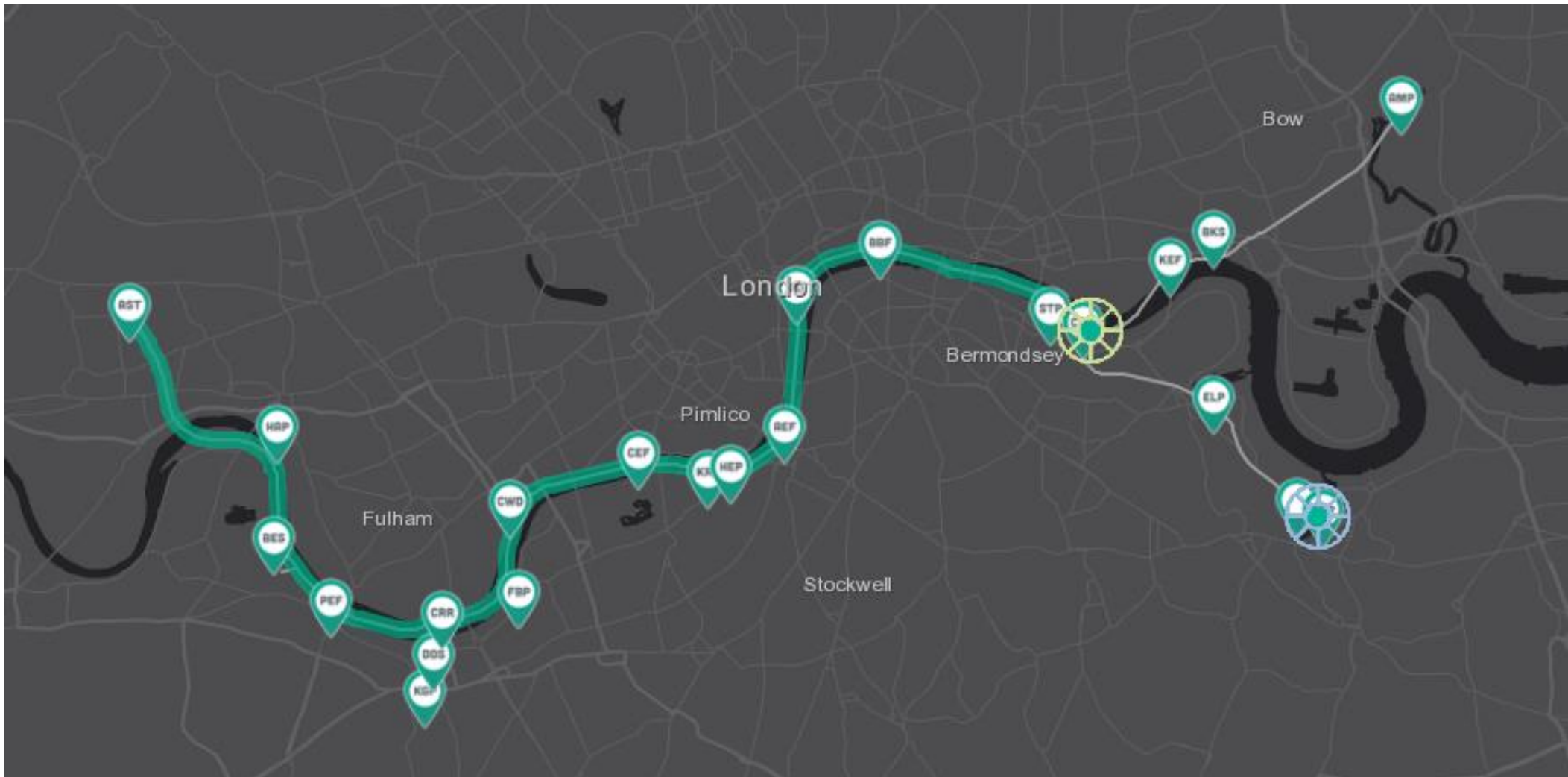
# **OVERALL PROJECT UPDATE**

**Andeep Gehlot, Communications Lead (West)**



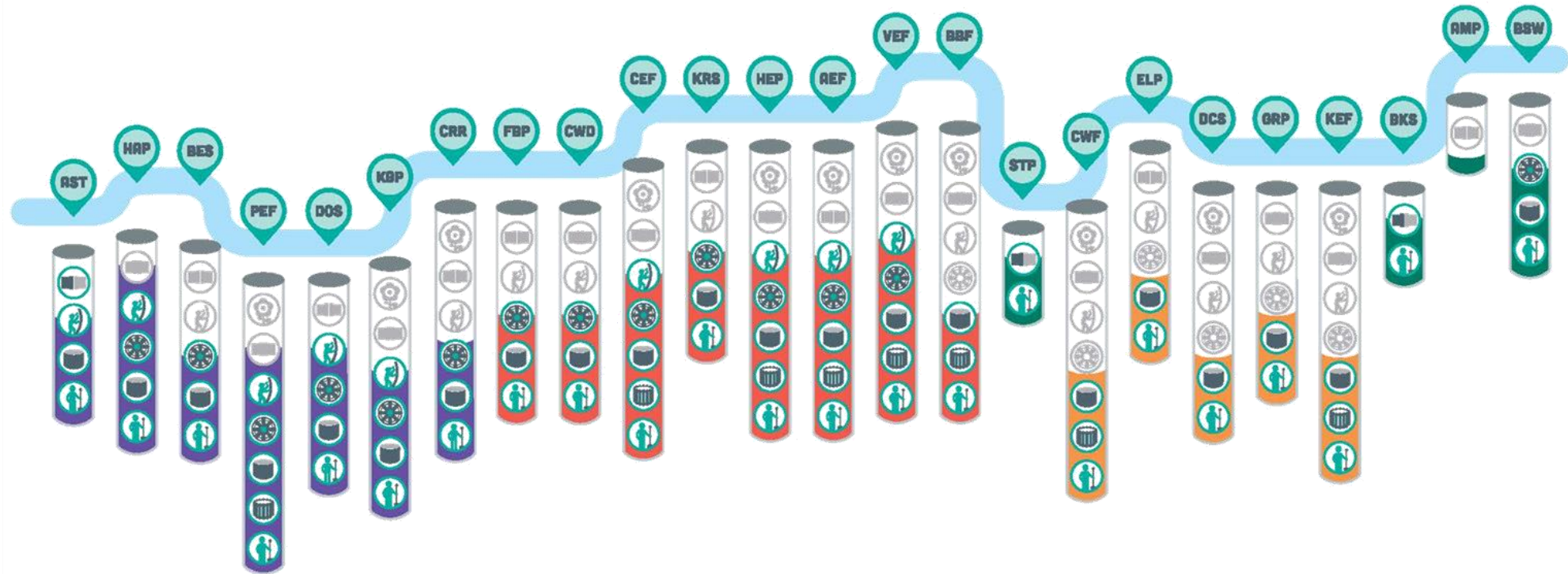
## Where is Rachel?

The Tideway TBM Tracker <https://www.tideway.london/tbm-tracker/>



## BUILDING THE SUPER SEWER

Autumn 2020



### KEY

- Site Preparation
- Cofferdam Built
- Shaft Construction
- Tunnelling
- Secondary Lining
- Sewer Connections
- Public Realm

- West Sites
- Central Sites
- East Sites
- Thames Water Sites





**Tideway**

# **RECONNECTING LONDON WITH THE RIVER THAMES**

**#SuperSewer**

[www.tideway.london](http://www.tideway.london)