

INFORMATION SHEET

2021-TDWAY- KEMPF-150-ZZ-CO-700023
June 2021

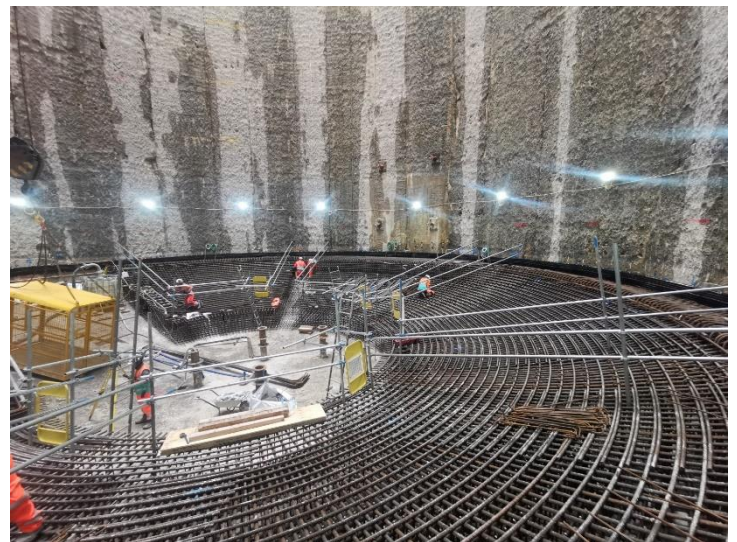


KING EDWARD MEMORIAL PARK FORESHORE WORKS UPDATE

This is the latest construction update from our King Edward Memorial Park Foreshore site.

We have recently completed excavation here of the final shaft on Tideway and are now preparing to pour the concrete base of the shaft. Before we pour the concrete, we needed to install 120 tonnes of steel. This was delivered to the site by river in 6 large, prefabricated segments and lowered to the bottom of the shaft.

You can see a picture on the right.



The site team is now planning to pour the concrete for the base slab on Wednesday 23 June. The base slab requires 780m³ of concrete, or around a third of an Olympic swimming pool and is expected to take approximately 18 hours to complete.

The casting of the base slab must be completed in one operation to ensure its quality and structural integrity and we will need to bring in regular concrete deliveries by road.

We will be starting on the day of the pour at 6:00 am and should be finished by midnight.

KEY INFO

- 23 June concrete pour from 6:00 a.m. with lorries, pumps and cranes
- Monitor site noise and use best practice onsite
- Hold community liaison working groups, currently online
- Normal Working Hours: Monday to Friday: 08:00 – 22:00, Saturday 08:00 - 18:00
- Up to one hour start up and shut down periods
- Tideway is happy to provide information in other languages and formats such as braille or large print. Please contact the Helpdesk

24 HOUR HELPDESK 08000 30 80 80

helpdesk@tideway.london | Freepost TIDEWAY
www.tideway.london

   @TidewayLondon

It is not our intention to work past midnight, however this may be required if there is any delay during the operation, such as late deliveries or issues with the quality of the concrete. Similarly, poor weather may result in a postponement.

We will continue to try our best to minimise disruption and apologise for any disturbance this may cause. If you have particular concerns about the impact of the work, we may be able to offer you support and advice. Please contact the Tideway Helpdesk.

New Foreshore Structure

We have now submitted our Formal Submission to LB Tower Hamlets for design of the new permanent foreshore structure in the park when we leave after construction.

Details can be found on the LB Tower Hamlets Planning Department website, under reference: [PA/21/01190/NC](#)

Please ensure if you have any comments, you provide these directly to LB Tower Hamlets in accordance with the timescales listed on their website.

We plan to hold a Community Liaison Working Group next month where you will be able to ask questions about the design.

Please contact the Tideway Helpdesk to receive an invitation.

We would like to thank you for your patience and co-operation while we continue construction for the Thames Tideway Tunnel in King Edward Memorial Park.