

# INFORMATION SHEET

July 2022



Tideway



Balfour Beatty

## HAMMERSMITH PUMPING STATION SITE ACCESS UPDATE

Our works on the Hammersmith Pumping Station site are progressing well and we would like to update you on the arrangements in place for the arrival of deliveries to the site.

Access for our deliveries will continue to be via the vehicle holding area we have set up on Chancellor's Road until Friday 23 December. To enable them to arrive at the site safely during our working hours, we have suspended several parking bays located on both sides of Chancellor's Road adjacent to our site. These suspensions will also remain in place until Friday 23 December. Please see the drawing overleaf.

The closure of the footway next to our site hoarding on Chancellor's Road will continue and the signage that has been placed on the footway on Chancellor's Road, adjacent to our site, advising pedestrians to use the opposite side of the road will also remain.

We would like to apologise for any inconvenience this may cause you and would encourage anyone with concerns or queries regarding this or our activities on the Hammersmith Pumping Station site to contact our 24/7 Helpdesk on 08000 30 80 80 or at [helpdesk@tideway.london](mailto:helpdesk@tideway.london).

## KEY INFO

### Duration of work

- 6 months – July 2022 to December 2022

### What to expect

- Parking suspension and a footway closure on Chancellor's Road

### What will we do

- Monitor noise, dust, and vibration levels
- Tell you if our plans change

24 HOUR HELPDESK 08000 30 80 80

[helpdesk@tideway.london](mailto:helpdesk@tideway.london) | Freepost TIDEWAY

[www.tideway.london](http://www.tideway.london)

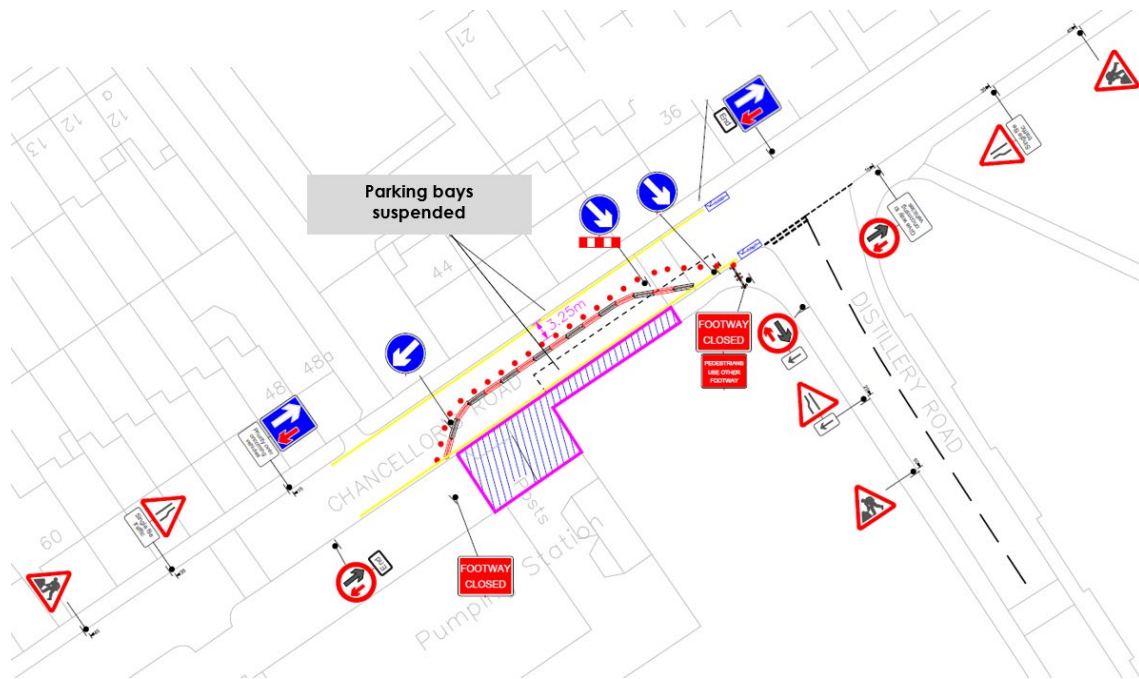


@TidewayLondon

# INFORMATION SHEET



Tideway



*Parking suspension and footway closure until Friday 23 December*

***If you feel affected by Tideway's work, you can contact Tideway's Helpdesk and ask to speak to your local Mitigation and Compensation Lead, who will be able to advise you on the Independent Compensation Panel (ICP).***

*Tideway is happy to provide information in other languages and formats such as braille or large print. Please contact us: 08000 30 80 80 or [helpdesk@tideway.london](mailto:helpdesk@tideway.london). You can also find out more on our website: [www.tideway.london/language](http://www.tideway.london/language)*