

INFORMATION SHEET

July 2022



Tideway



Balfour Beatty

KING GEORGE'S PARK FOOTPATH & ROAD CLOSURES

Work at our King George's Park site is progressing well as we continue with the final stages of our landscaping activities.

To enable us to safely continue with our landscaping and paving works, for three weeks from Monday 25 July we will be putting in place some footpath and road closures.

- **Phase 1** will be in place for two weeks from Monday 25 July to Friday 5 August and includes the introduction of single file traffic at the junction of Neville Gill Close and Buckhold Road. This will be in place in both directions operated by temporary traffic lights.

The footpath in this area will also be closed and directional signage will be put in place for the redirection of pedestrians. Please see the diagram overleaf.

- **Phase 2** will be in place for one week from Monday 8 August when the temporary traffic lights will be removed and the junction will fully re-open in both directions but the footpath closure will remain in place. Please see the diagram overleaf.

We apologise in advance for any inconvenience this may cause you and encourage anyone who has any queries or concerns regarding our works on our King George's Park site to please contact the Tideway Helpdesk on 0800 030 8080 or at helpdesk@tideway.london

KEY INFO

Duration of work

- 3 weeks 25 July – 12 August

What to expect

- Introduction of a road closure and temporary traffic lights for 2 weeks (25 July – 5 August)
- Footpath closure for 3 weeks (25 July – 12 August)

What will we do

- Install temporary traffic lights
- Place directional signage for pedestrians
- Contact you if our plans change

24 HOUR HELPDESK 08000 30 80 80

helpdesk@tideway.london | Freepost TIDEWAY

www.tideway.london

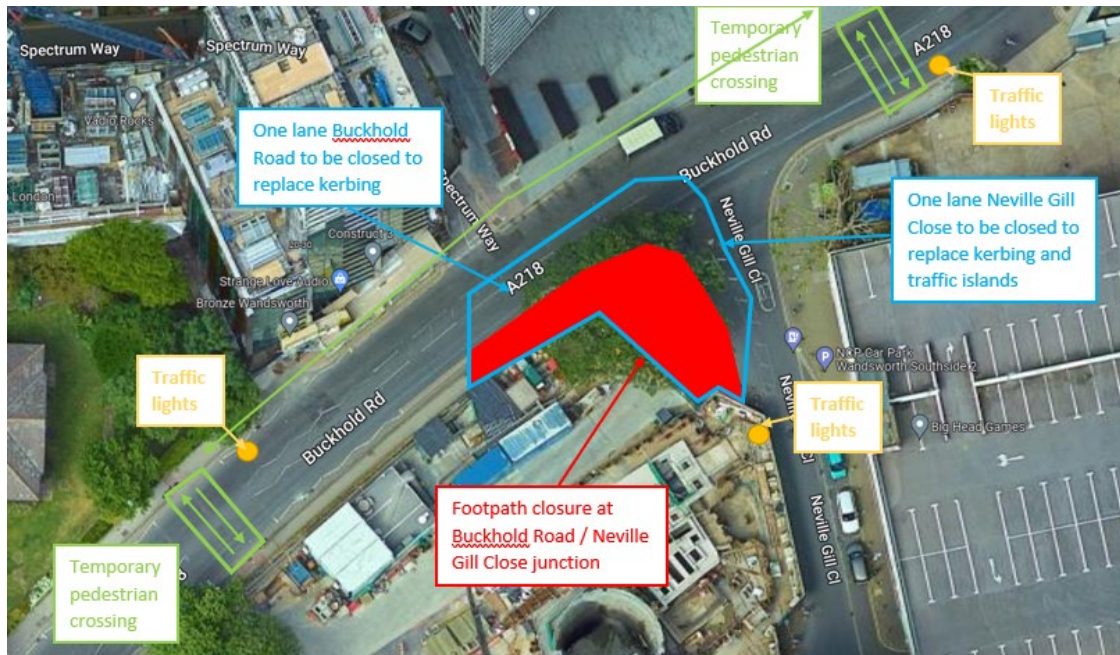


@TidewayLondon

INFORMATION SHEET



Tideway



Phase 1 - 25 July 2022 to 5 August 2022



Phase 2 - 25 July 2022 to 12 August 2022