

INFORMATION SHEET



December 2022



HAMMERSMITH PUMPING STATION VEHICLE HOLDING AREA UPDATE

Our works on the Hammersmith Pumping Station site are progressing well and we would like to update you on the arrangements we have in place for the vehicle holding area on Chancellor's Road.

To enable us to continue to safely receive deliveries, the vehicle holding area we have set up on Chancellor's Road will now remain in place until Tuesday 28 February. This extension is due to works we need to continue within the inlet channel taking longer than anticipated to complete primarily due to the recent heavy wet weather.

The parking suspensions and closure of the footway next to our site hoarding on Chancellor's Road will also continue and the signage that is in place on the footway on Chancellor's Road, adjacent to our site advising pedestrians to use the opposite side of the road will remain.

We would like to apologise for any inconvenience this may cause you and would encourage anyone with concerns or queries regarding this or our activities on the Hammersmith Pumping Station site to contact our 24/7 Helpdesk on 08000 30 80 80 or at helpdesk@tideway.london.

If you feel affected by Tideway's work, you can contact Tideway's Helpdesk and they will be able to advise you on the Independent Compensation Panel (ICP).

Tideway is happy to provide information in other languages and formats such as braille or large print. Please contact us: 08000 30 80 80 or helpdesk@tideway.london. You can also find out more on our website: www.tideway.london/language

KEY INFO

Duration of work

- Extension for 2 months – end December 2022 to end February 2023

What to expect

- Continuation of parking suspension and the footway closure on Chancellor's Road

What will we do

- Monitor noise, dust, and vibration levels
- Tell you if our plans change

24 HOUR HELPDESK 08000 30 80 80
helpdesk@tideway.london | Freepost TIDEWAY
www.tideway.london



INFORMATION SHEET

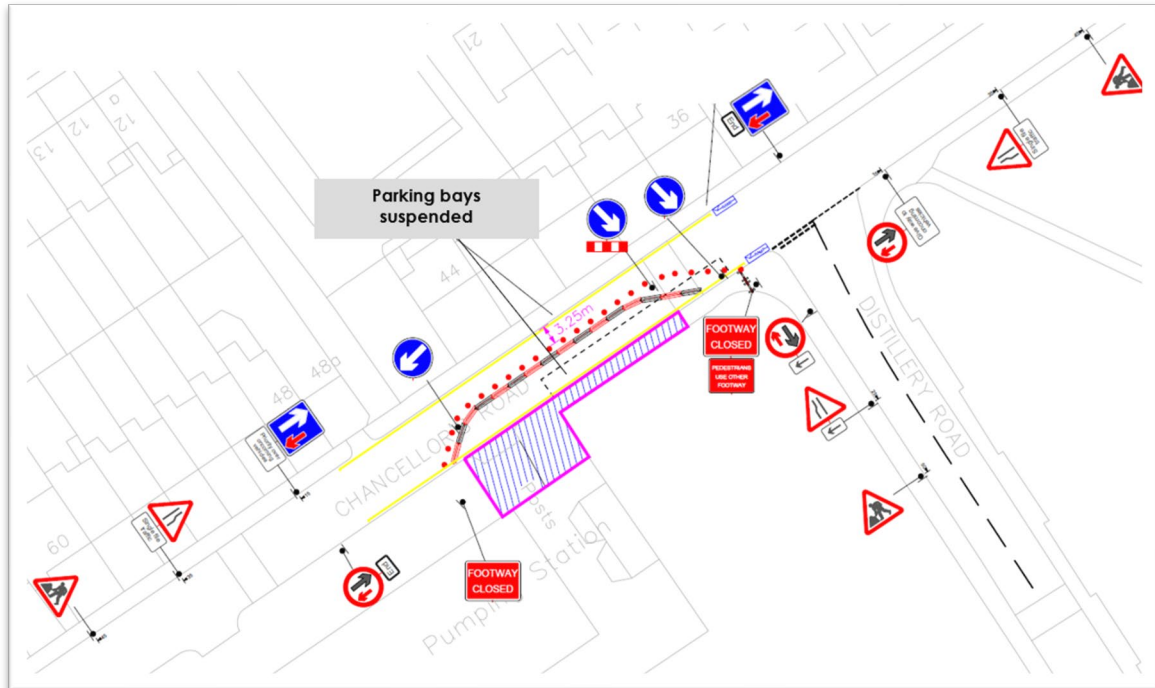


Tideway



MORGAN
SINDALL

Balfour Beatty



Parking suspension and footway closure until Tuesday 28 February.