

INFORMATION SHEET

2023-TDWAY- GREPS-150-ZZ-CO-700027
April 2023



GREENWICH PUMPING STATION

CONTINUOUS WORKING INSIDE THE SHAFT

During April, the site team is constructing three internal walls inside the shaft. This work takes place inside our acoustic enclosure but does require vehicle deliveries of concrete to the site. As explained in our information sheet in January, some of these deliveries need to take place at night.

When concrete lorries need to enter the acoustic enclosure, one of the doors is kept partially open during the night, to a height that enables the lorries access.

The site team is starting each concrete operation from 8am, to minimise the number of night shifts needed for the work. We require approximately 5 more night shifts for this construction activity.

Generally, within the acoustic enclosure, we are working 24 hours a day, five days a week (24/5).

There is no working on Saturday nights and Sundays.

COMPLETION OF AIR TREATMENT CHAMBER CIVIL WORKS

We are also planning to complete works for the Air Treatment Chamber by the end of the month.

The final task is to remove the temporary sheet piles, which should take around 5 days using an excavator-mounted vibrator. There will be an increase of vibration during this activity, although it is expected to be less disruptive than during installation in October.

Removal is planned for the last week of April.

KEY INFO

WORKING HOURS

- Normal: Monday to Friday: 8am to 6pm, Saturday 8am to 1pm
- Extended (CSO): Monday to Friday: 6pm to 10pm, Saturday 1pm to 5pm
- Continuous (shaft and tunnel lining): 24/5 (not Saturday nights or Sundays)
- Up to one hour start up and shut down periods

WHAT TO EXPECT

- Increase in vehicle movements during day and night shifts
- Site lighting during night-time hours

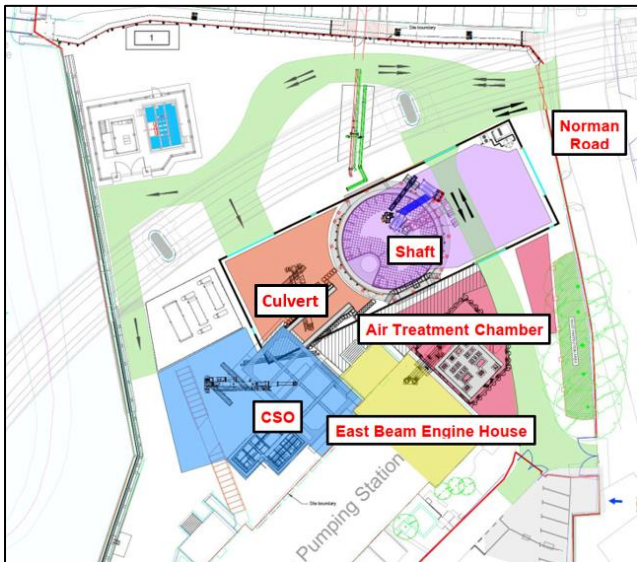
WHAT WE WILL DO

- Continue to use best practice
- Hold Community Liaison Working Group meetings: Contact the Helpdesk to join the next meeting

24 HOUR HELPDESK 08000 30 80 80

helpdesk@tideway.london | Freepost TIDEWAY
www.tideway.london





General site plan layout (left) and picture of the Air Treatment Chamber (right)

The site team will continue to try and minimise disruption, but if you have concerns about the impact of any of our construction work, we may be able to offer you support and advice. Please contact the Tideway Helpdesk.

We would like to thank you for your patience and co-operation while we continue construction for the Thames Tideway Tunnel at the Greenwich Pumping Station site.

We are happy to provide information in other languages and formats such as braille or large print. Please contact the Tideway Helpdesk on 08000 308080.