

INFORMATION SHEET

2023-TDWAY- DEPCS-150-ZZ-CO-700025
January 2023



GREENWICH PUMPING STATION

The Tideway project is progressing well across the capital. Tunnelling is complete and, in the shafts, we have been installing vortex tubes, which will transfer sewage overflow into the new tunnel. The team has also been preparing for our next phase of works, the secondary concrete lining of the tunnel and shaft.

CONTINUOUS WORKING

From January to July 2023, we will construct the shaft's secondary concrete lining. The site team will be working 24 hours, five days a week (24/5) within the acoustic enclosure. There will be an increase in vehicle deliveries to the site to support these works, including some concrete deliveries during the night.

In addition to the shaft secondary lining works, we will be excavating a connection between the Combined Sewer Overflow (CSO) and the shaft, from January to April. This will also be 24/5 within the acoustic enclosure. There will be an increase of vehicle movements during the day.

Looking further ahead, from August to October, we will be adding a secondary concrete lining to the tunnel.

We will not be working on Saturday nights or Sundays on these elements of construction. The acoustic enclosure will remain shut from 7pm to 7am.

OTHER WORKS

We will continue construction within the CSO, during normal and extended working hours.

The Air Treatment Chamber, between the Thames Water Pumping Station and Norman Road, is also under construction during normal working hours.

Once operational, this structure will remove odours coming from the tunnel.

KEY INFO

WORKING HOURS

- Normal: Monday to Friday: 8am to 6pm, Saturday 8am to 1pm
- Extended (CSO): Monday to Friday: 6pm to 10pm, Saturday 1pm to 5pm
- Continuous (shaft and tunnel lining): 24/5 (not Saturday nights or Sundays)
- Up to one hour start up and shut down periods

WHAT TO EXPECT

- Increase in vehicle movements during days
- Vehicle movements during night
- Lighting during night hours

WHAT WE WILL DO

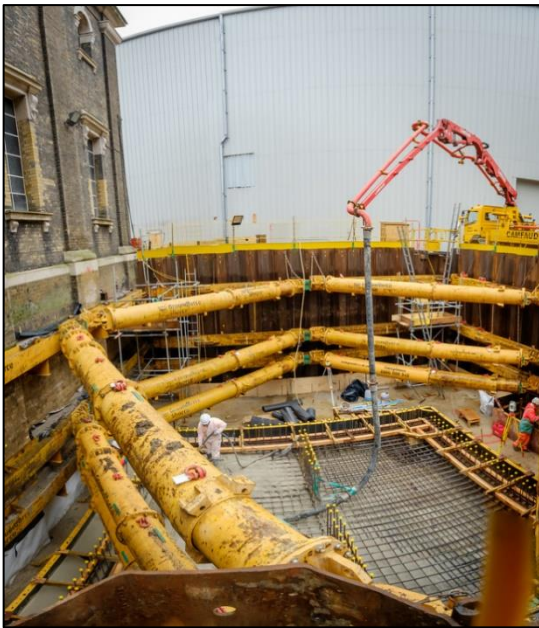
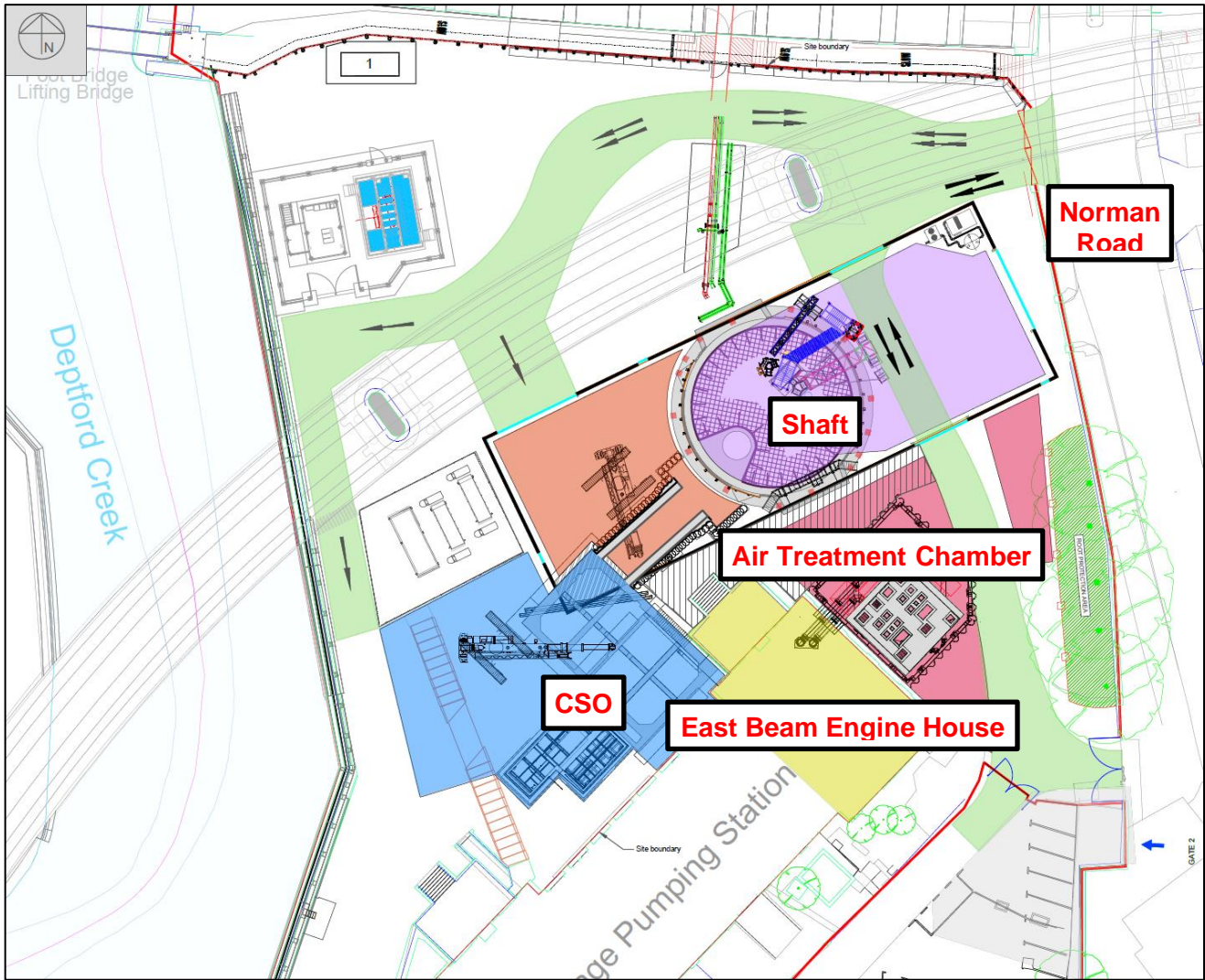
- Continue to use best practice
 - Monitor noise & dust levels
 - Hold Community Liaison Working Group (CLWG) meetings
- Contact the Helpdesk to join the next CLWG on Tues 7 Feb

24 HOUR HELPDESK 08000 30 80 80

helpdesk@tideway.london | Freepost TIDEWAY
www.tideway.london



A plan of the site showing Tideway construction areas



Talk to the team

If you would like to talk to the team about our work, we will be holding an online CLWG (community meeting) on Tuesday 7 February 6.30pm-8.00pm.

If you are interested in attending, please email GetInvolved@tideway.london

If you feel affected by Tideway construction work, please contact our Helpdesk, where someone will be able to advise you on any available support.

Tideway is happy to provide information in other languages and formats such as braille or large print.

Please contact: 08000 30 80 80 or helpdesk@tideway.london

Photograph: Concreting the reinforced base slab for the Air Treatment Chamber