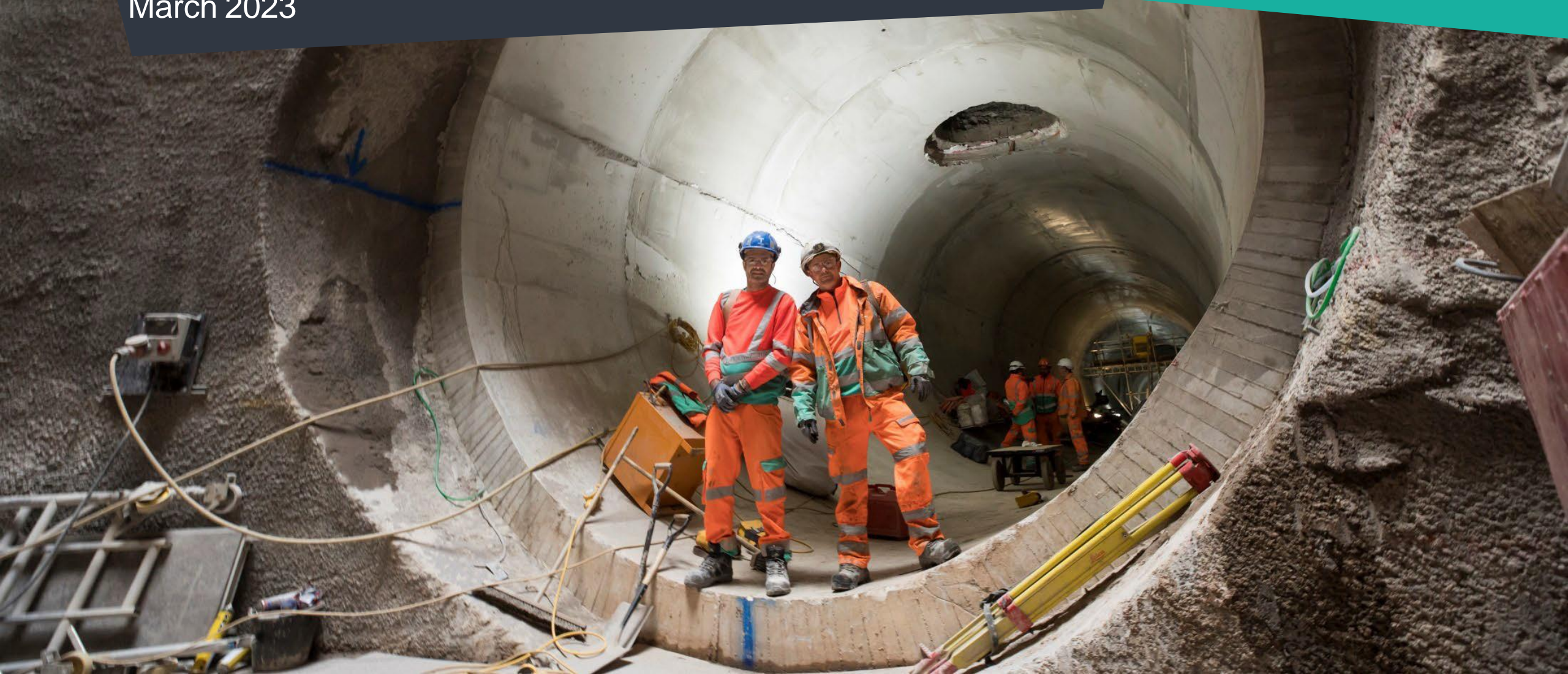


# HAMMERSMITH PUMPING STATION

Community Liaison Working Group  
March 2023



Tideway





**WELCOME**

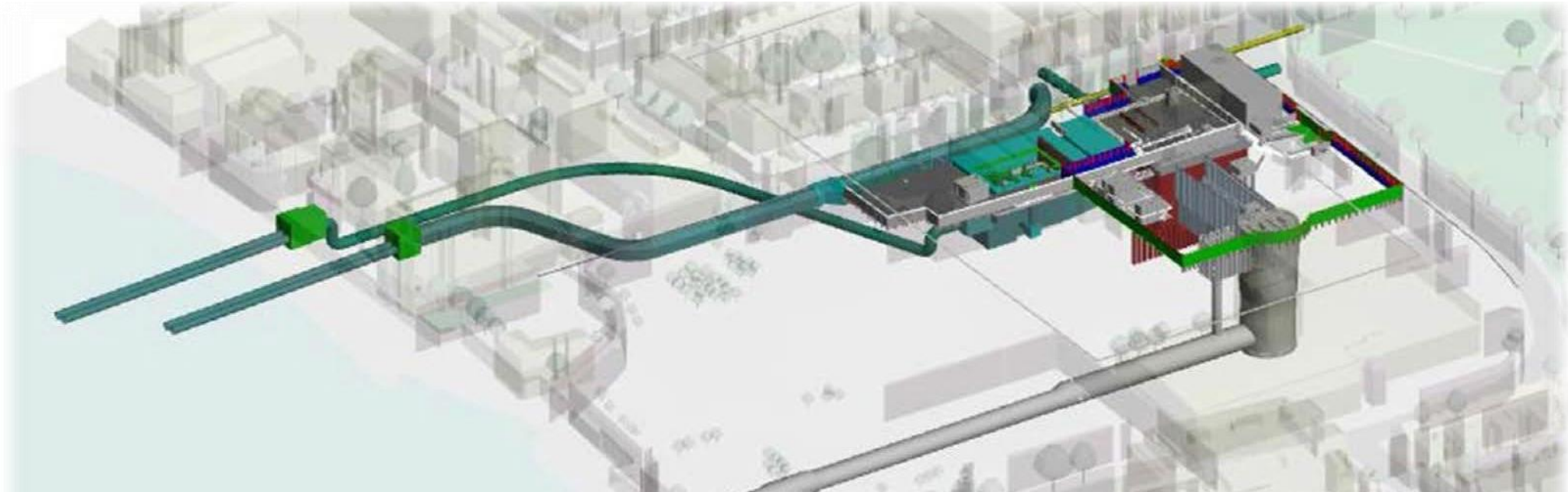
**Vasile Gornea, Section Manager**

## Aerial View of Site

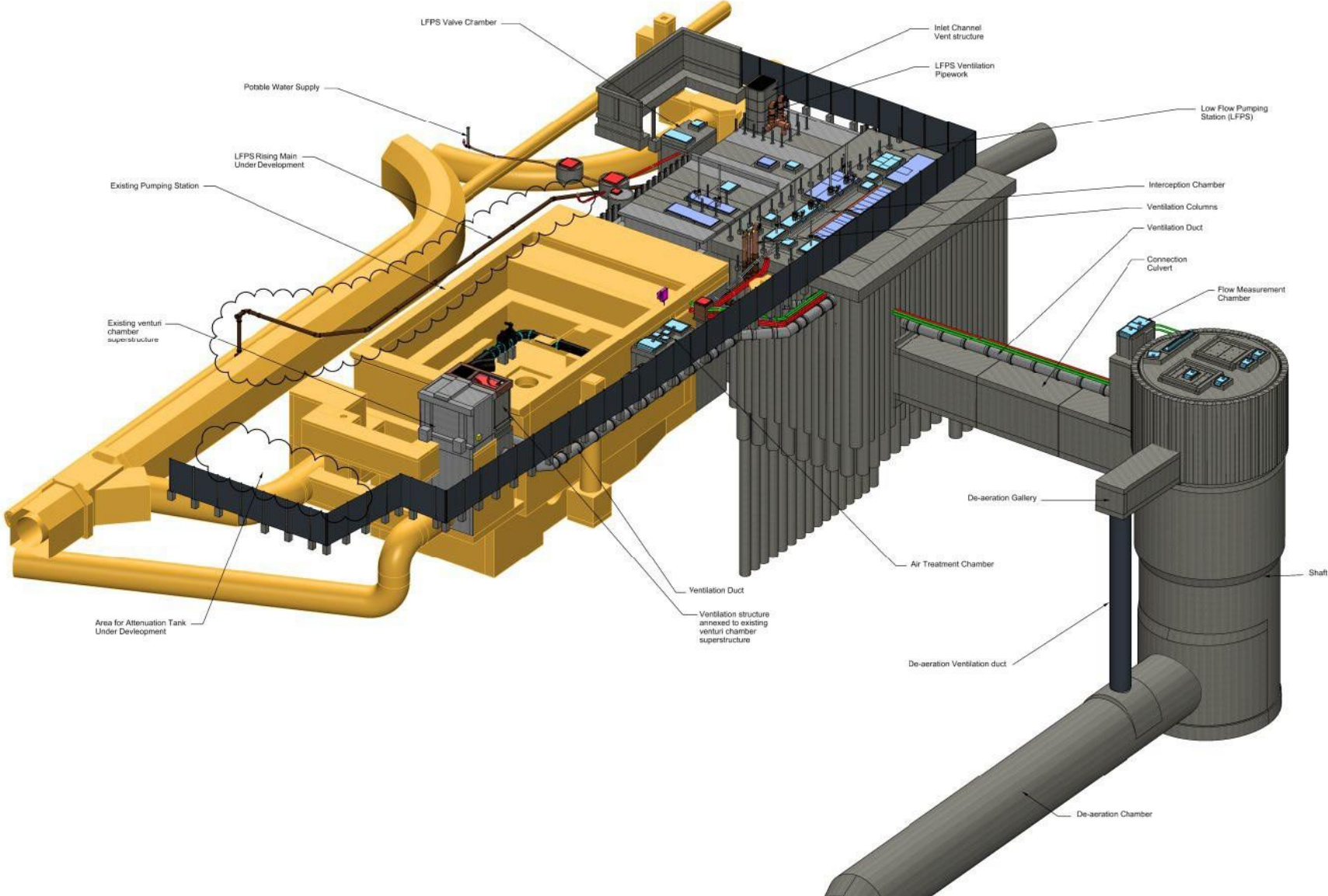


## Works Update - Summary

- Interception Chamber completed
- Inlet Channel works completed
- Penstocks and heavy mechanical installations completed
- Precast structures completed
- Installation of cabling and instrumentation – ongoing
- Landscaping works – ongoing
- Final snagging - ongoing



# Below Ground

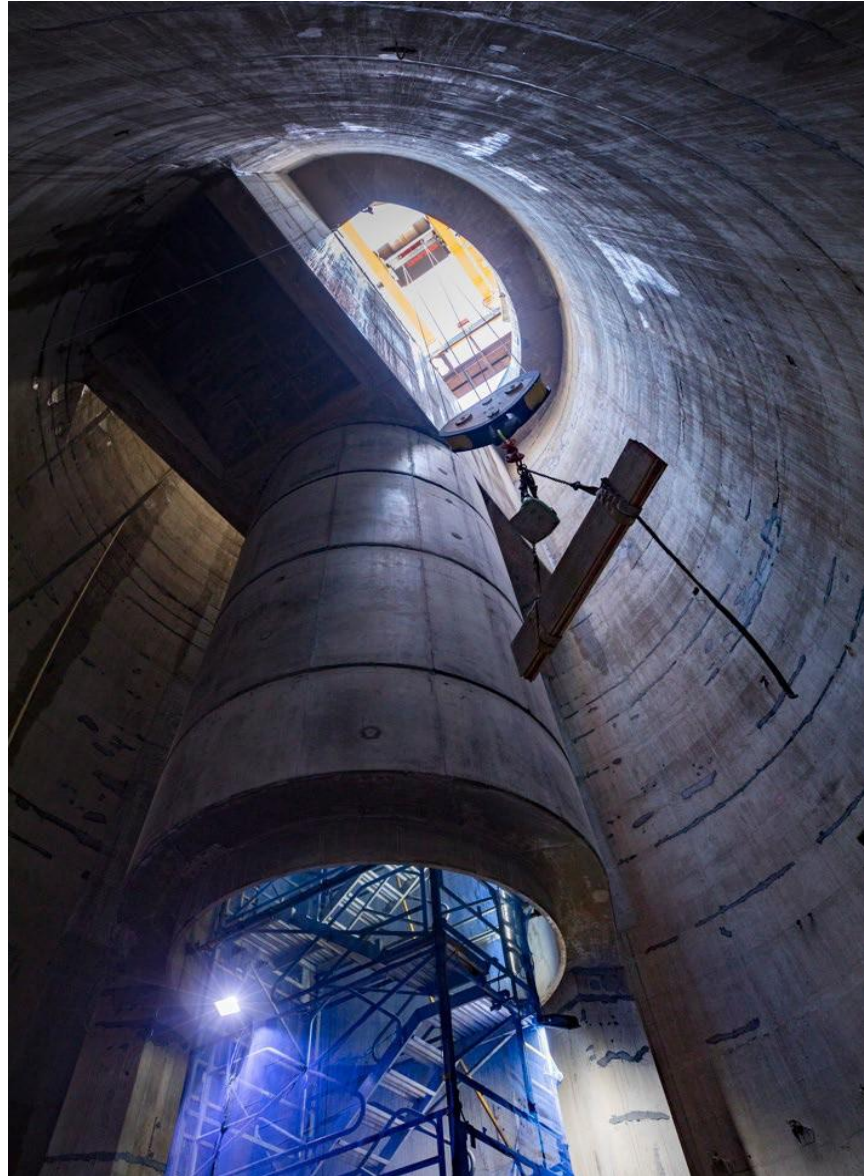


## Tunnel Construction

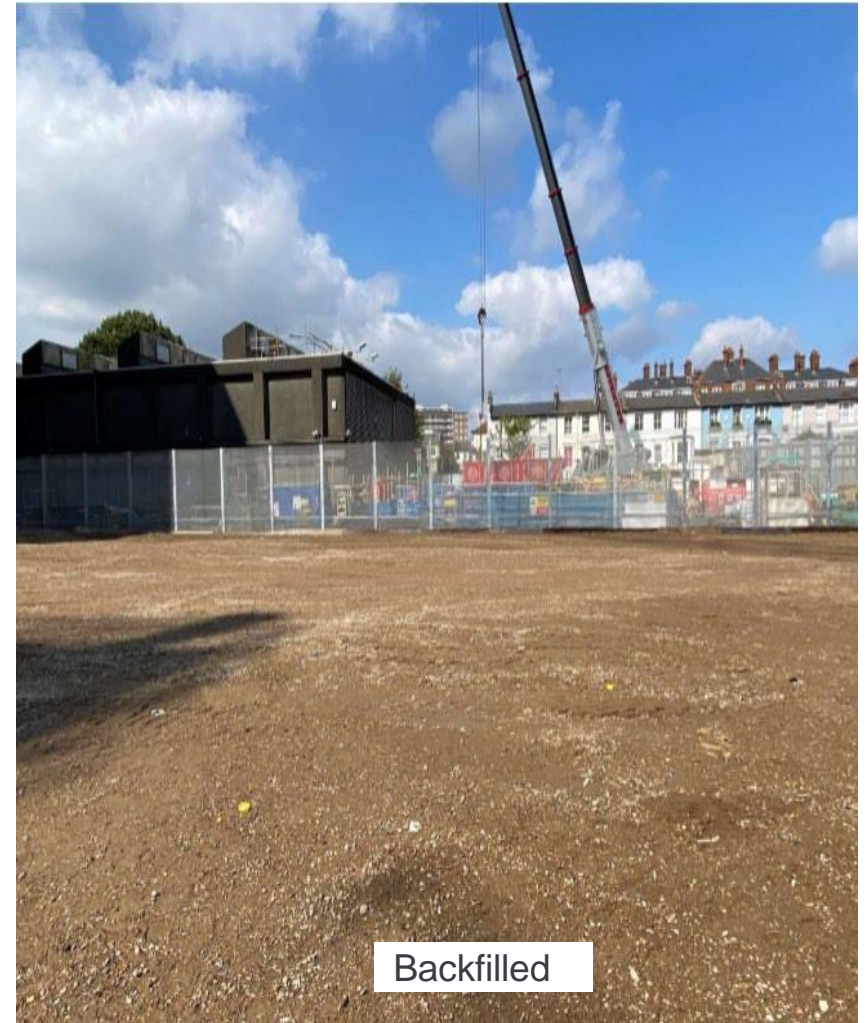
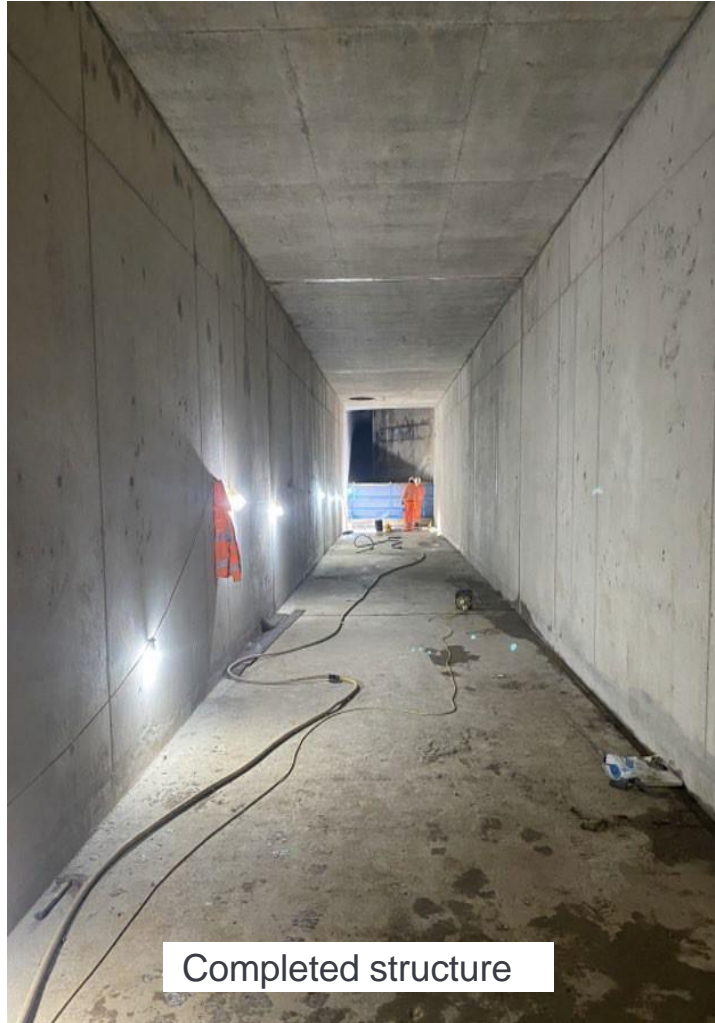
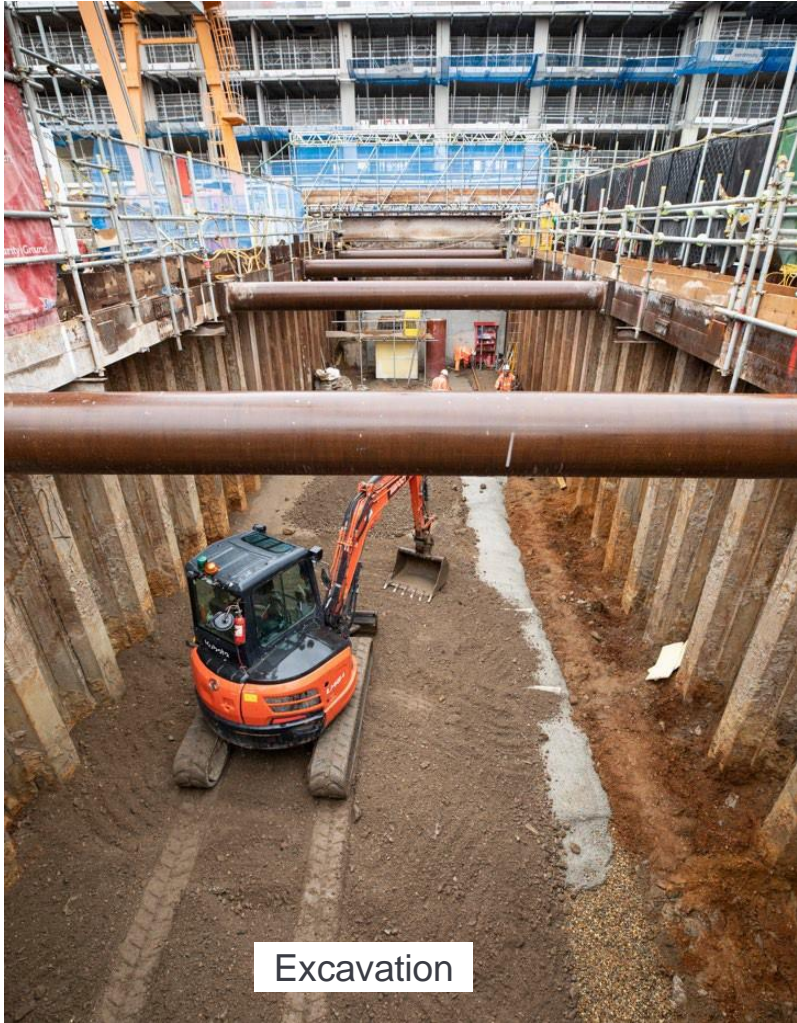
- Tunnel secondary lining successfully completed
- Connection to the main tunnel formed under the river



# Shaft

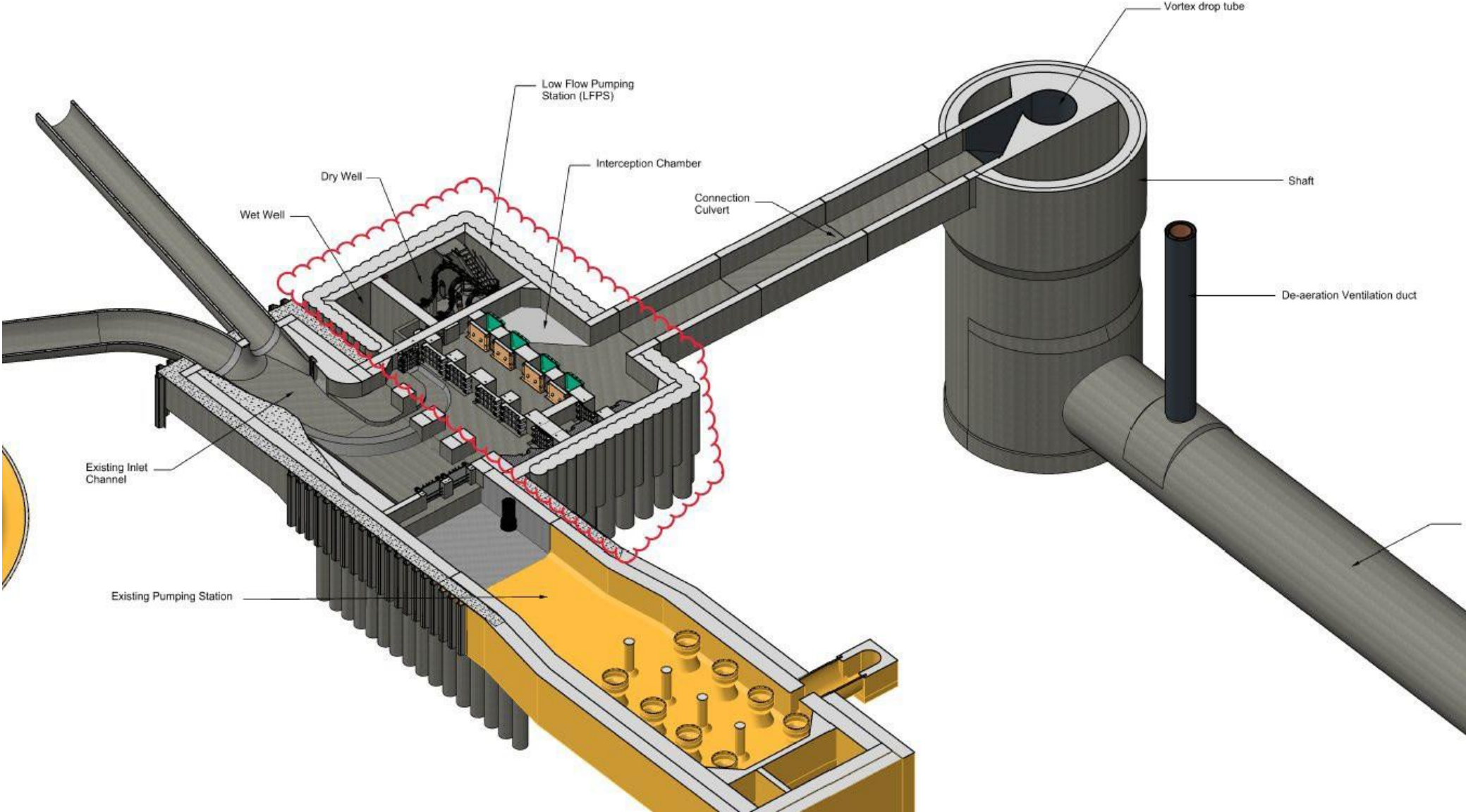


# Culvert





# Interception Chamber



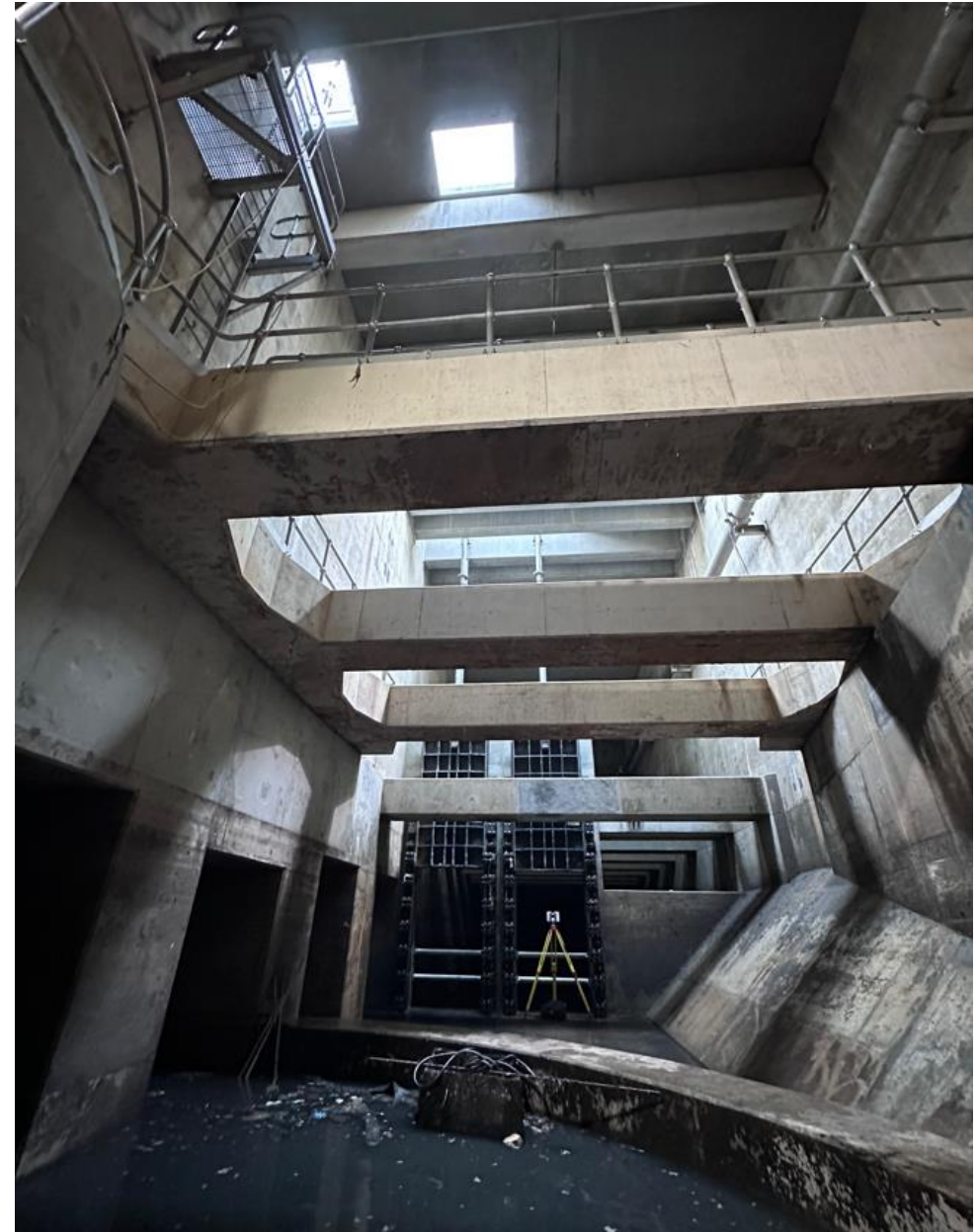
## Interception Chamber

- The structure was completed in 2021
- Installation of mechanical equipment - completed late 2022
- All covers installed Feb 2023



## Inlet Channel Works

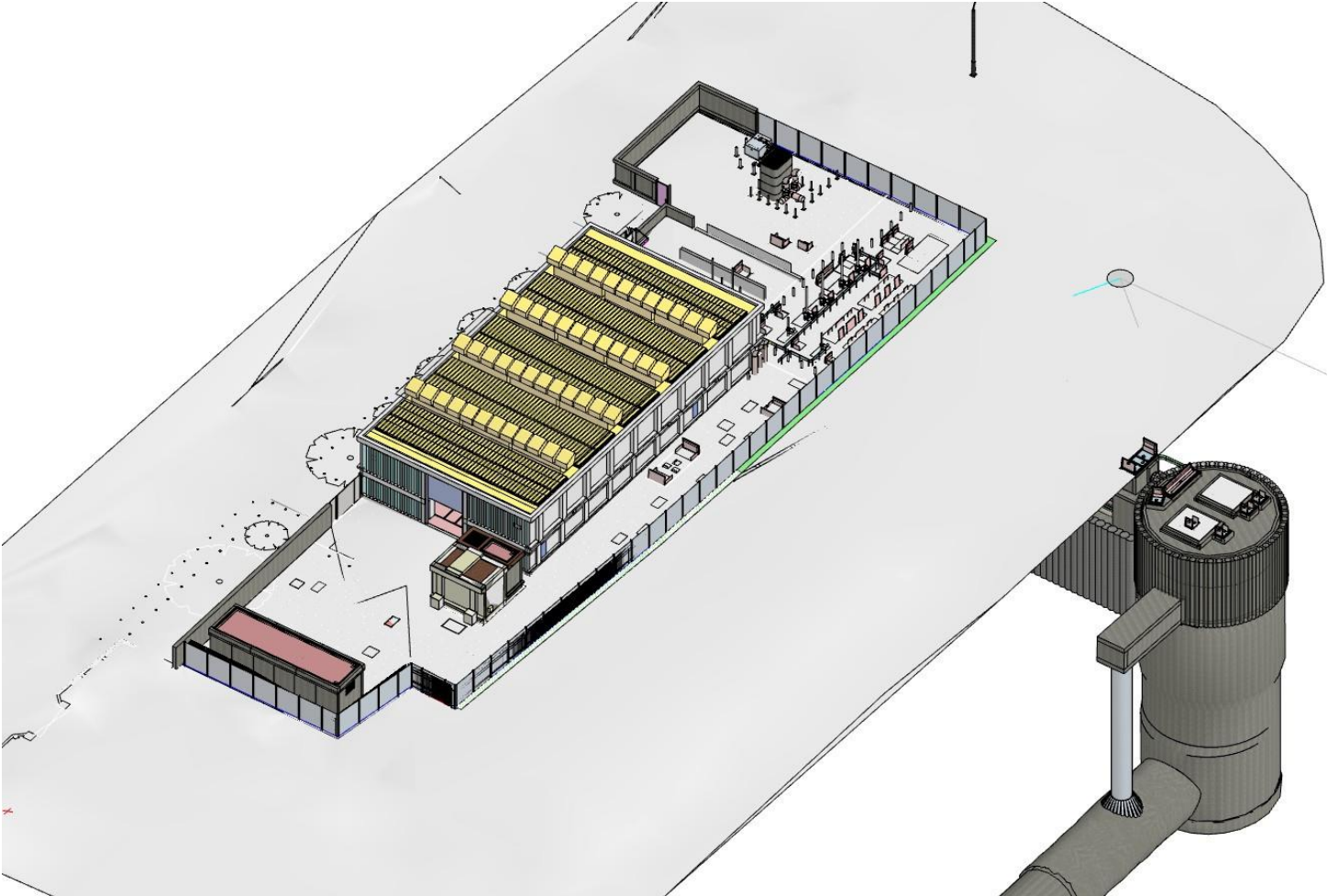
- Completed the internal works and removed all the temporary weir wall and flumes



# Inlet Channel Works



# Surface works



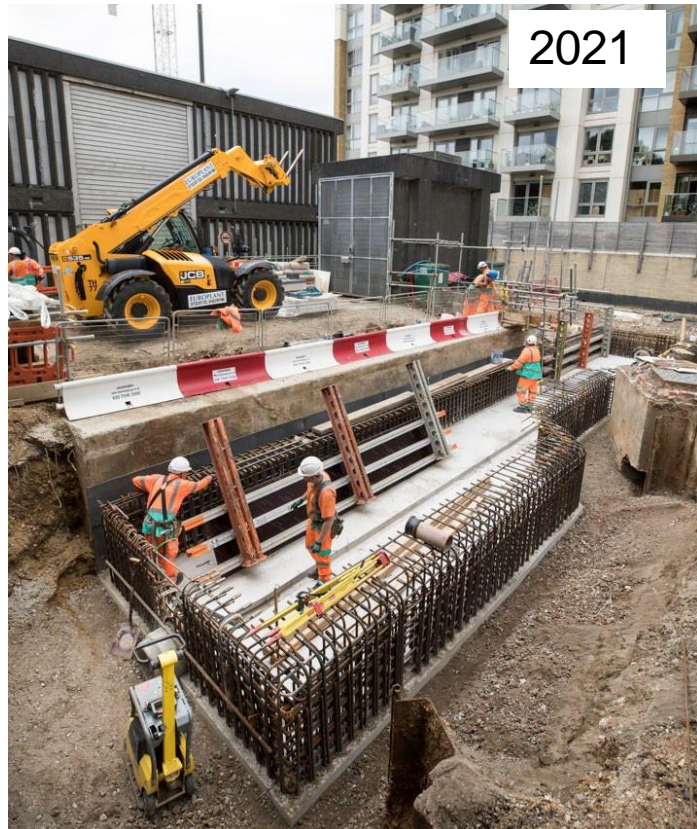
## Roof works and covers

- All of the Inlet Channel roof is now complete and sealed
- All the air tight covers are installed
- The crane was removed from site



## External MEICA Services

- Completed installing all the external services, including surface water drainage, ventilation ductwork and cable draw pits
- Backfilled all the excavations



## Above ground structures

- All above ground structures are now installed
- All structures were designed to match the existing structures aesthetically



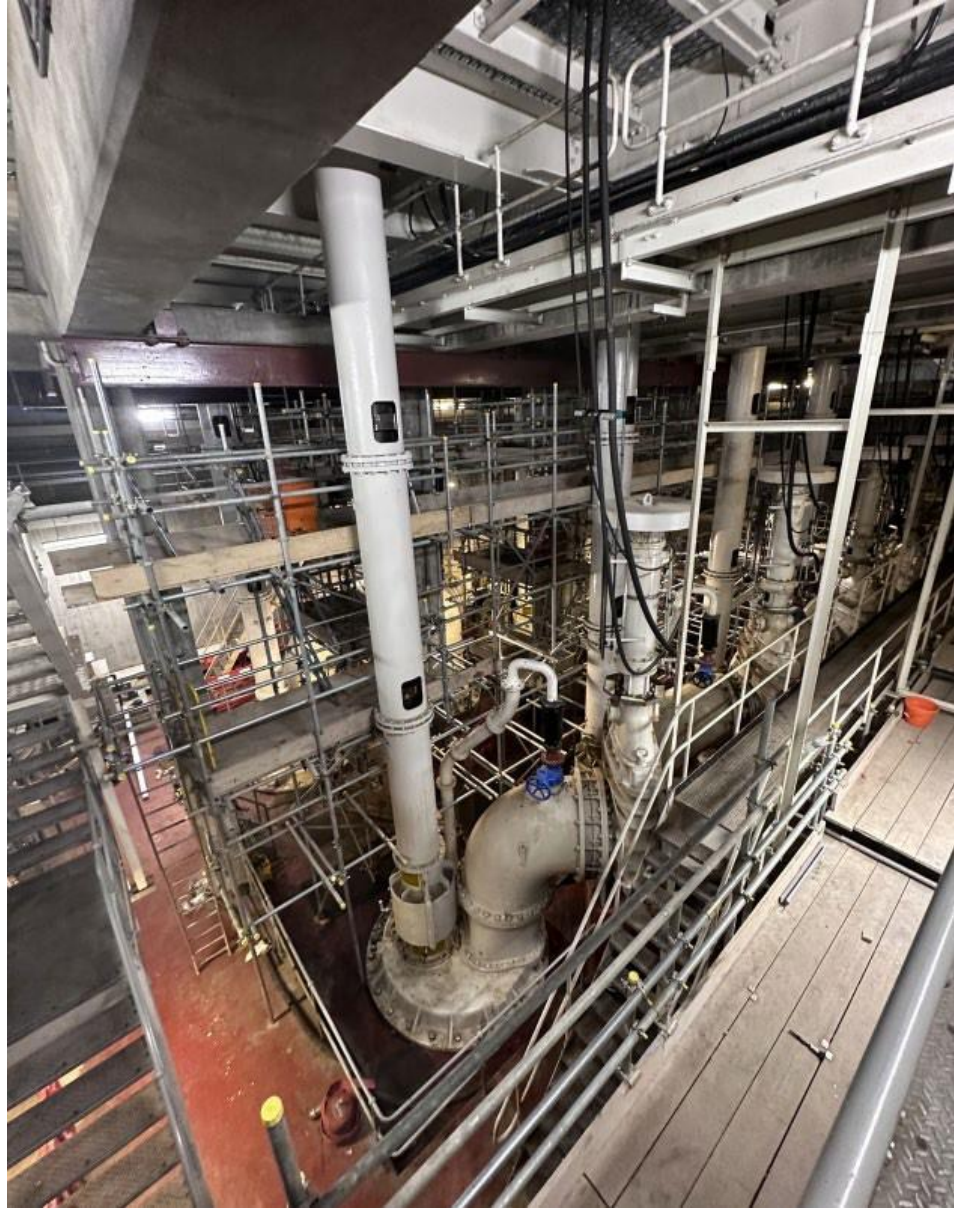


## Electrical equipment

- Installation of cables and containment – ongoing. Approx. 14km cables being installed
- Equipment in the Kiosk and Pumping Station being installed
- Electricals panels delivery – early April
- Testing and Commissioning – May – Oct 2023



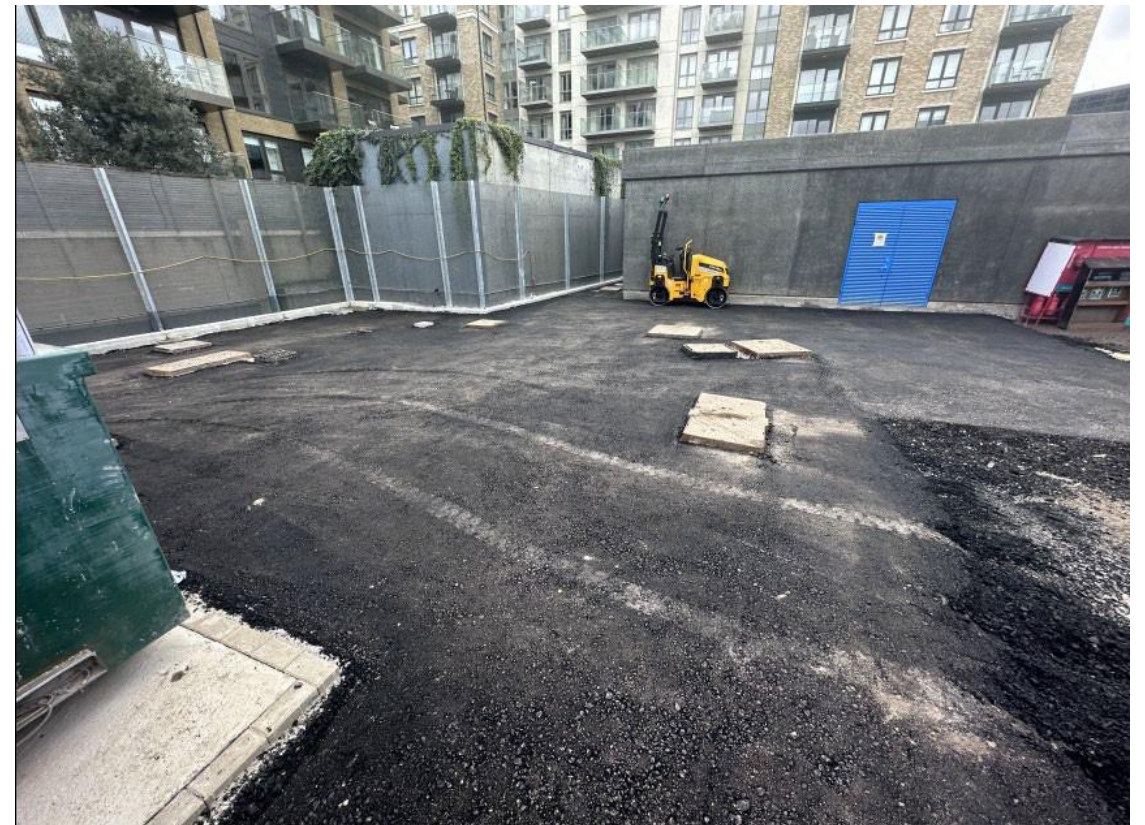
# Electrical and mechanical equipment



# Surfacing and Landscaping works



- Sections 1 and 2 – being asphalted at the moment, to be completed this week
- Section 3 – new pavement and gates – early April
- Section 4 – surfacing to be completed by end of May 2023



## Chancellor's Road works

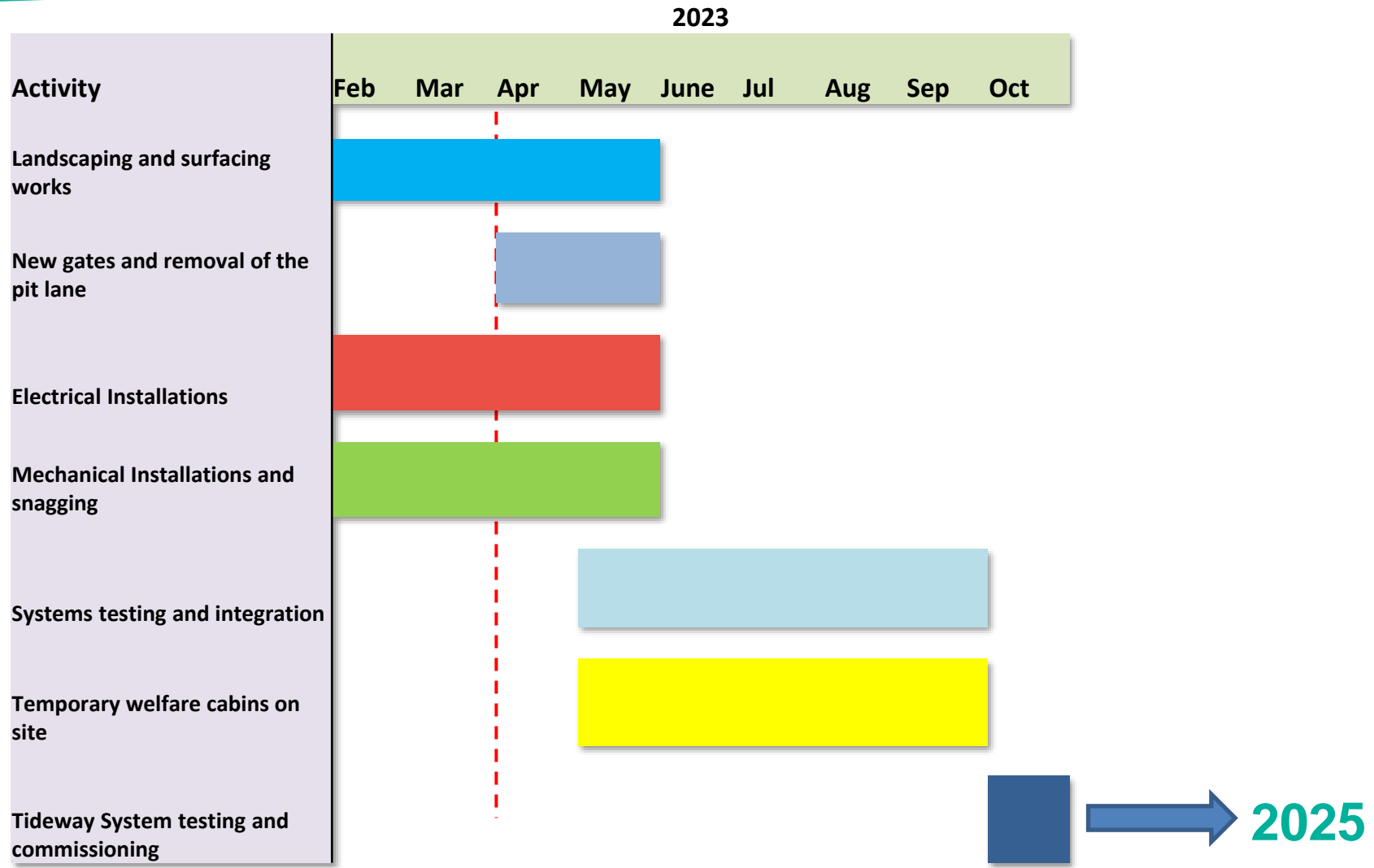


Temporary pit lane and fences will be removed in June once the landscaping works are completed



Over-pumping lane is now removed permanently

# Next 3 Months



# **COMMUNITY ENGAGEMENT**

**Anne-Marie Brannigan, Communications Manager**

# Community Engagement

- Our community support activities are continuing
- 595 volunteering hours undertaken in 2021 - including support for STEM activities and local community groups
- Over £2,000 raised for Breast Cancer Care
- Support for 26 work placement students
- Please contact us if you are aware of an opportunity or community group that we could possibly help



**Foreshore Structure Edge Protection**  
Design Challenges

- Fixings - finding a way of fixing the edge protection system onto the existing structure
- Span between fenders - the span between fenders is almost 5m, the maximum allowed span between supports is 3m
- Rigidity - ensuring that the maximum deflections in the system are below 50mm (as required by British standards)
- Obtaining CAT II design approval - far more complex design than I had previously worked with

The slide includes technical diagrams showing cross-sections of the edge protection system and a 3D perspective view of the structure. A video call interface is visible on the right side of the slide, showing a grid of participant icons and a small video feed of a person.



# Community Engagement

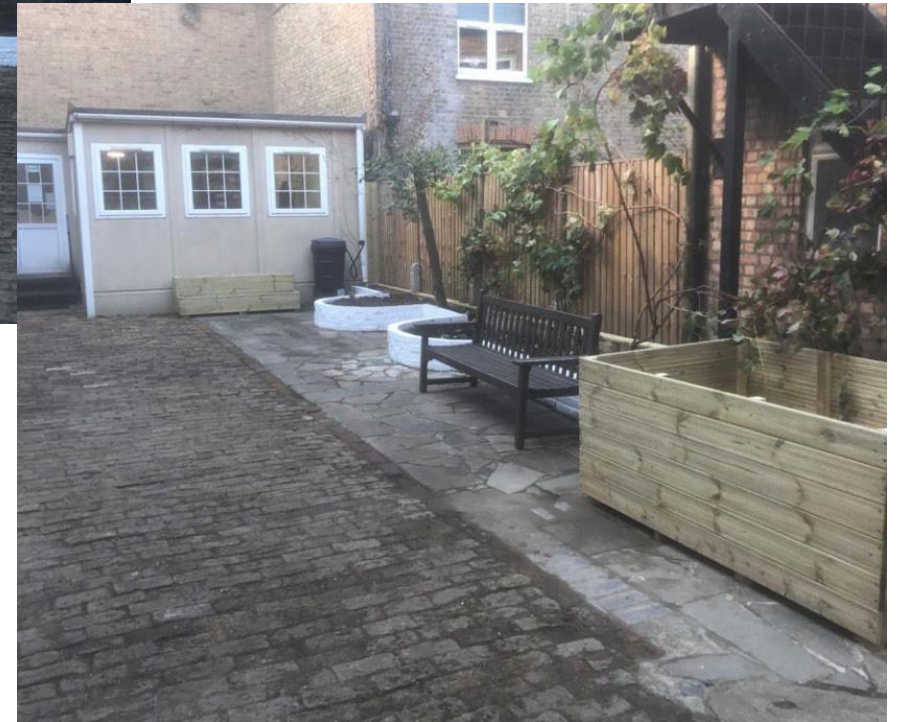
Bishop Creighton House – before ...





# Community Engagement

After .....



# Community Engagement

## Enquiries

- 87 enquires received since March 2022
  - 53 enquiries relating to properties
  - 5 x lighting
  - 9 x noise
  - 7 x air quality
  - 13 x general project enquiries



**Tideway**

**Call:** 08000 30 80 80

**Email:** [helpdesk@tideway.london](mailto:helpdesk@tideway.london)

**Write to:** Freepost TIDEWAY



**0800 316 9800**

Available 24/7 to answer all enquiries & complaints related to the operations and maintenance of the site

## Community Engagement

**As our work progresses and we move onto the testing and commissioning phase what you can expect from us?**

- Notification as to the completion of our construction works
- Information regarding the testing phase and what this will look like
- Information regarding any community events that will take place



**Tideway**

**Call:** 08000 30 80 80

**Email:** [helpdesk@tideway.london](mailto:helpdesk@tideway.london)

**Write to:** Freepost TIDEWAY



**0800 316 9800**

Available 24/7 to answer all enquiries & complaints related to the operations and maintenance of the site

## How to make a claim if affected by Tideway's work

### **Who do I go to for help and advice?**

For personal assistance and advice contact our Helpdesk: 08000 30 80 80 / [helpdesk@tideway.london](mailto:helpdesk@tideway.london)

For independent advice contact the Independent Advisory Service (IAS) Helpline 0800 917 8845 or [info@tidewayias.co.uk](mailto:info@tidewayias.co.uk)

### **How do I submit my claim?**

You can submit your claim direct to the ICP: [admin@tidewayicp.london](mailto:admin@tidewayicp.london)

[You can download the form off the Tideway website: www.tideway.london/help-advice/compensation-information/Independent-Compensation-Panel](http://www.tideway.london/help-advice/compensation-information/Independent-Compensation-Panel)

## How To Stay Up To Date

Follow us on social media: **@TidewayLondon**



[en-gb.facebook.com/TidewayLondon/](https://en-gb.facebook.com/TidewayLondon/)



[www.instagram.com/tidewaylondon/](https://www.instagram.com/tidewaylondon/)



[www.linkedin.com/company/tideway-london/](https://www.linkedin.com/company/tideway-london/)



[twitter.com/TidewayLondon](https://twitter.com/TidewayLondon)



**Tideway**

# **RECONNECTING LONDON WITH THE RIVER THAMES**

**#SuperSewer**

[www.tideway.london](http://www.tideway.london)