

KING EDWARD MEMORIAL PARK FORESHORE

Community Liaison Working Group



13 June 2023

CONSTRUCTION UPDATE



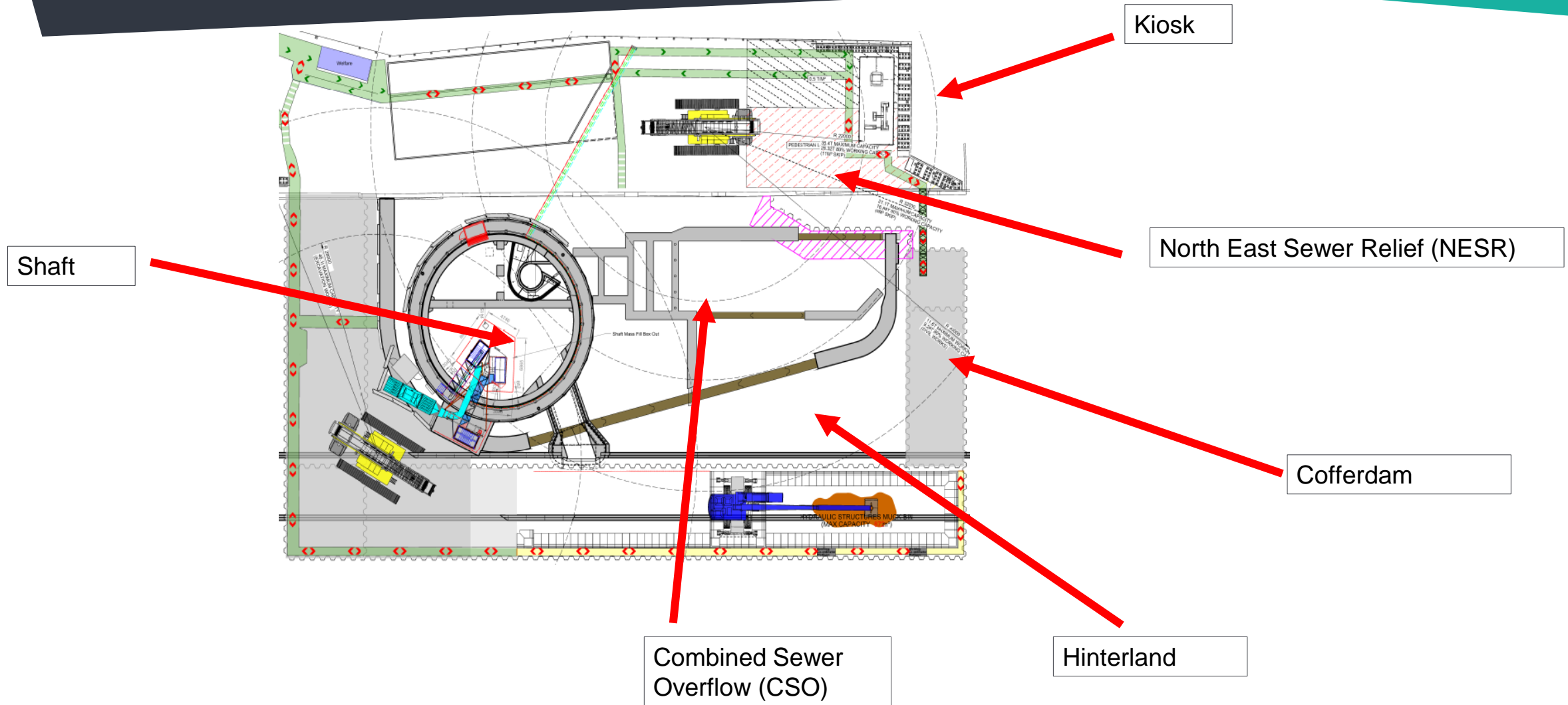
Tideway





Tideway

LOCATION OF VARIOUS WORKS



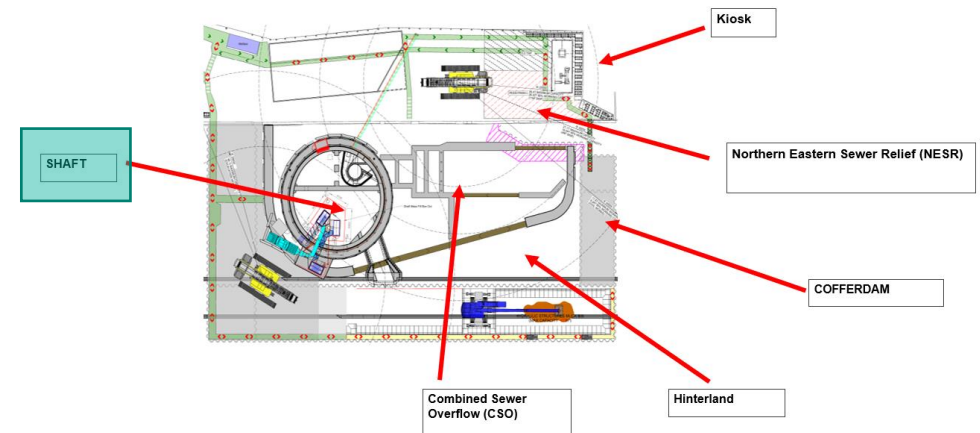


Tideway

SITE UPDATE: SHAFT

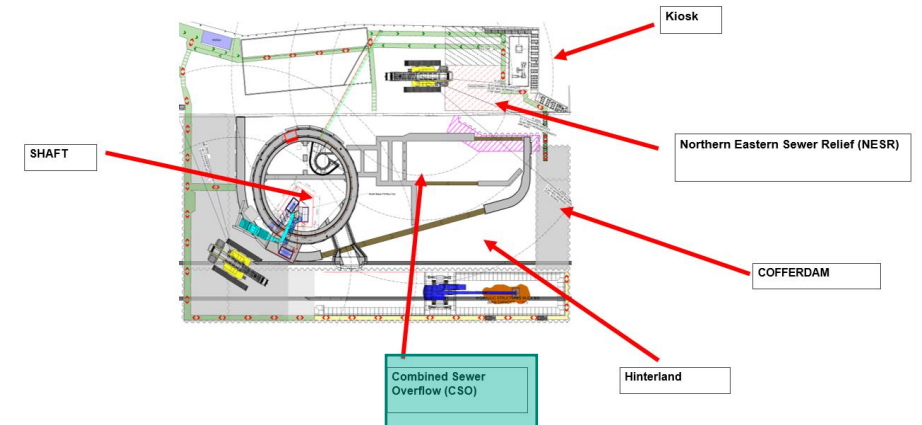


- Internal works completed
- Shaft cover slab installation ongoing



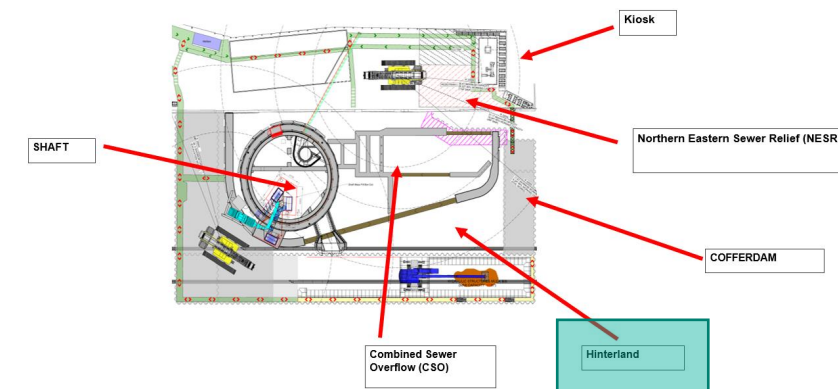
COMBINED SEWER OVERFLOW (CSO)

- Roof slab installation towards North East Sewer Relief (NESR) connection



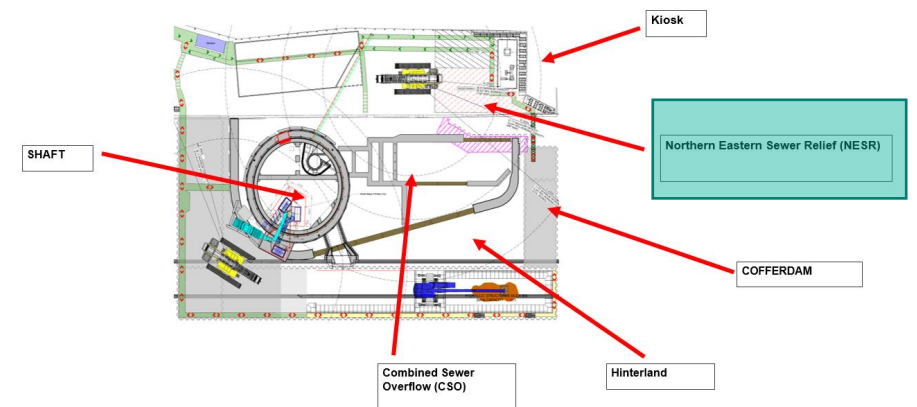
RIVER WALL - HINTERLAND

- Hinterland excavation completed
- Precast cladding installation completed with apron grout mattress poured
- Lower path being completed



NORTH EAST SEWER RELIEF AND KIOSK WORKS

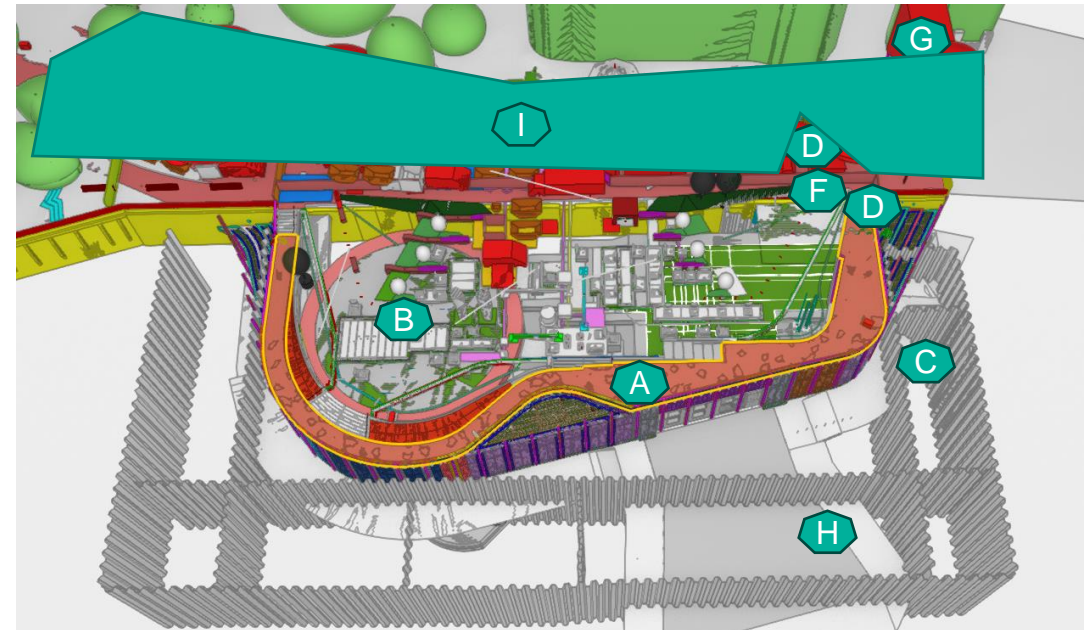
- North East Sewer Relief strengthening works: Excavation on going
- Kiosk: Base slab installation on going



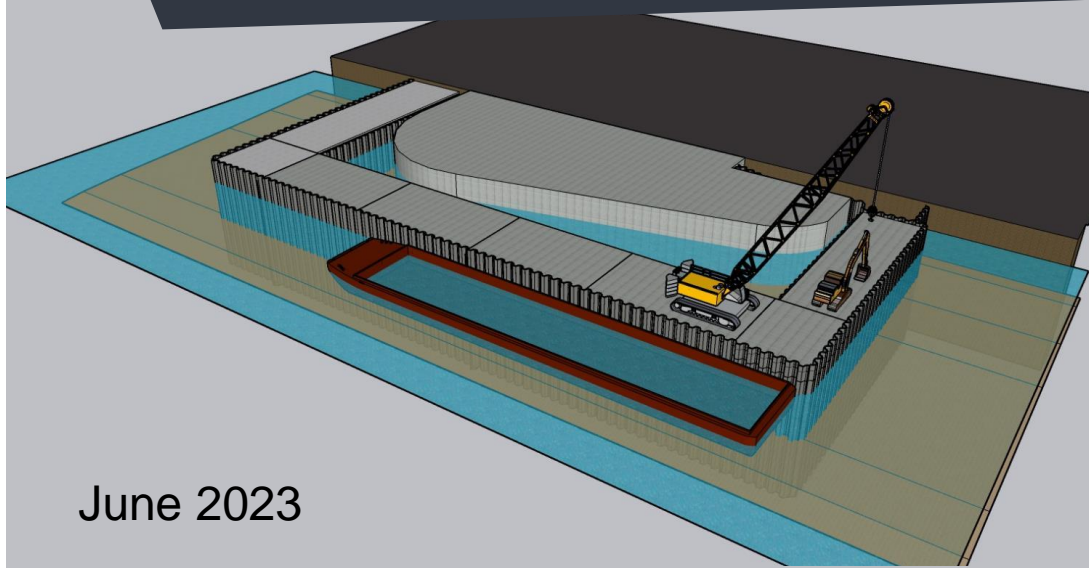
KING EDWARD MEMORIAL PARK FORESHORE UPCOMING WORKS

The next 6 months

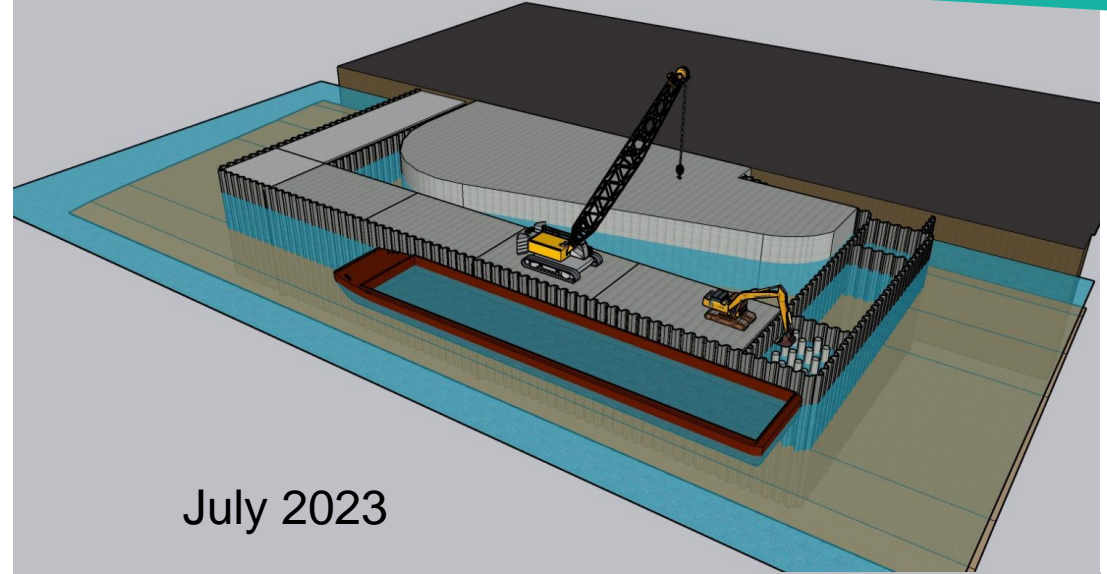
- Completion of lower path enabling works – end of August 2023 (A)
- Shaft completion: June 2023 (B)
- Start of cofferdam removal: June 2023 (C)
- NESR strengthening works: June 2023 (D)
- Installation of intertidal terrace foundation : June 2023 (E)
- Upper interception chamber construction start: August 2023 (F)
- Kiosk (structural works and start of mechanical and electrical installation) (G)
- Cofferdam removal (H)
- Site wide ducting and drainage (I)
- Site Wide architectural and landscaping



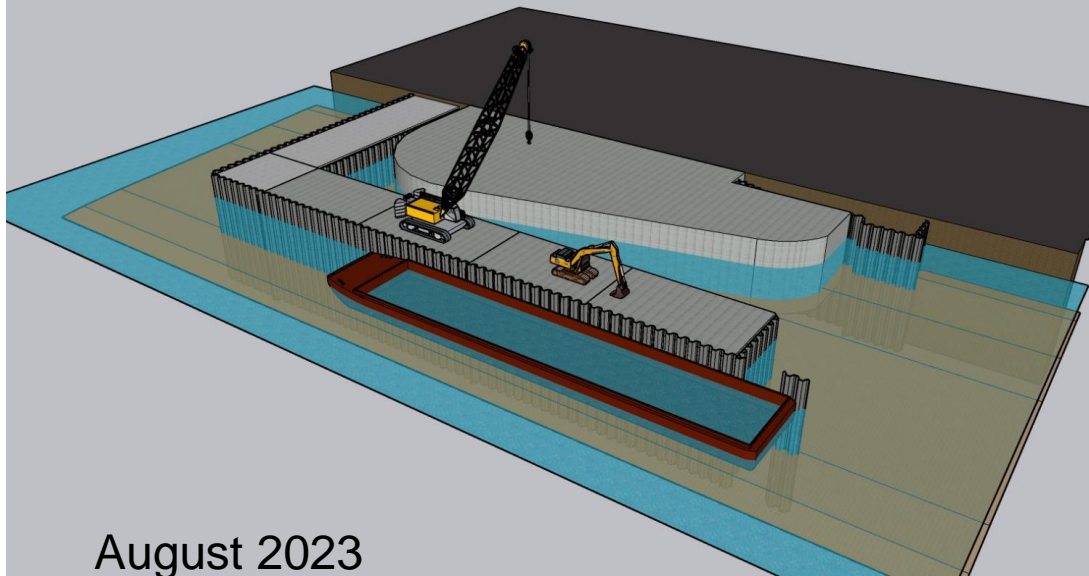
COFFERDAM REMOVAL SEQUENCE



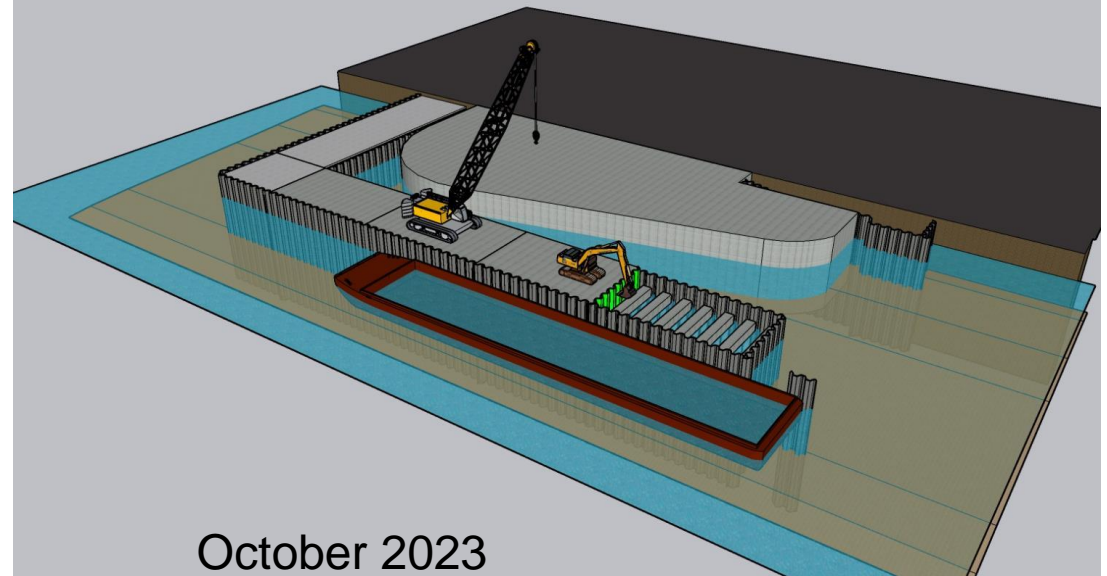
June 2023



July 2023

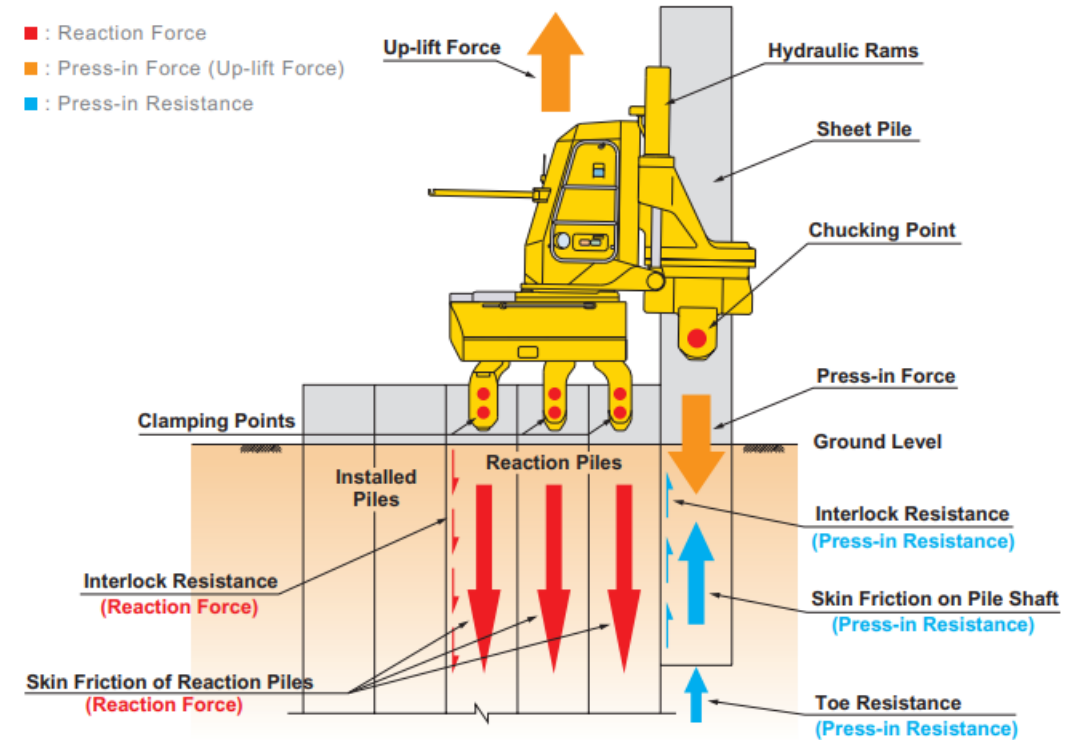
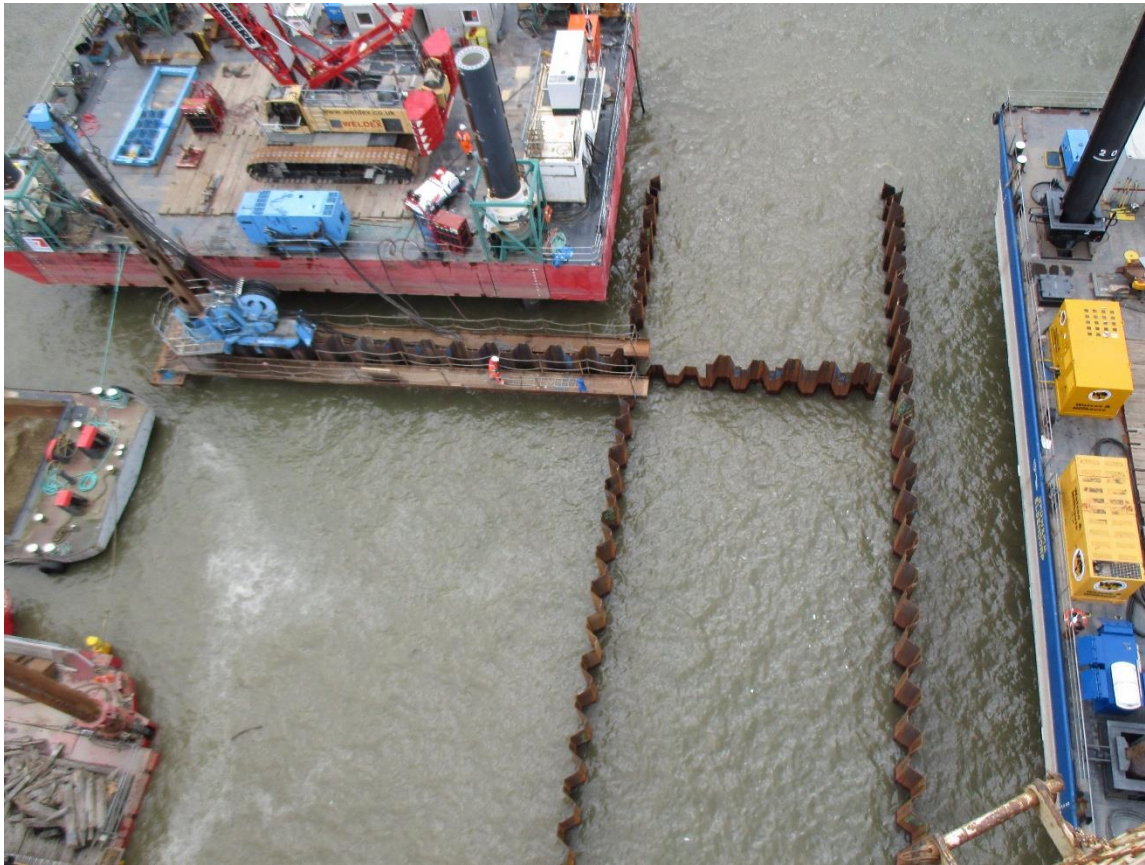


August 2023



October 2023

COFFERDAM REMOVAL



Example of GIKEN used at Chambers Wharf site, Bermondsey, to install sheet piles.
At King Edward Memorial Park Foreshore it will be the reverse operation

PROGRAMME



Key Activity	Q2 2023	Q3 2023	Q4 2023	Q1 2024	Q2 2024	Q3 2024
KEMPF riverwall precast installation						
Upper interception chamber						
Scour Protection and mattress installation						
Cofferdam Removal						
Intertidal terrace install						
Kiosk Construction						
Lower pathway excavation, backfill and construction						
Backfilling for civil and pre-A&L works						
Architectural and Landscaping						
Site demobilisation						

ENVIRONMENT: Noise and Air Quality

Section 61 Overview

Permitted Hours

Standard Hours = **Mon-Fri** 08:00-18:00 & **Sat** 08:00-13:00

- General Site Activity - Allowed Sat 13:00-18:00.
- Architecture & Landscaping – including NESR roof. Allowed Sat 13:00-18:00.
- Cofferdam removal - excavating and breaking
- Kiosk - excavation, backfill and services
- MEICA

Extended Hours = **Mon-Fri** 05:00-08:00 & 18:00-22:00, **Sat** 05:00-08:00 & 13:00-18:00

- Barge loading/unloading
- Scour Protection Installation
- Cofferdam removal – use of long reach and crane only

Continuous Hours = **24/7**

- Dewatering
- NESR and Cofferdam Repair/Maintenance – contingency measure

Mobilisation / Demob Hours = **Stnd. hrs** 07:00-08:00 & 18:00-19:00, **Ext. hrs** 04:30-05:00 & 22:00-22:30

- Briefings, inspections, safety plant start-up checks, site cleaning, concrete wagons arriving for testing.

Maintenance Hours = **Sat** 08:00-17:00, **Sun** 10:00-16:00

- Plant maintenance: installation and maintenance of services

Section 61 Exceedances

Noise

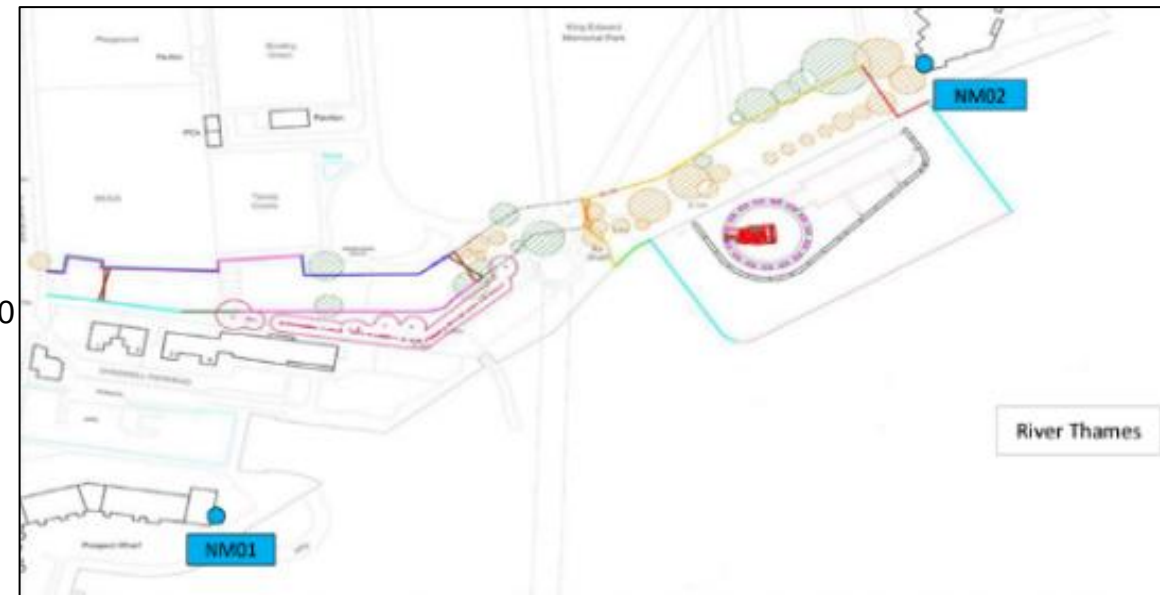
Jan 23 to date:

0 out of 40 allowed TAP exceedances during any 6 month period

Air

Jan 23 to date: 0 exceedances

Monitoring Locations



ARCHITECTURE & LANDSCAPE

Foreshore structure



ARCHITECTURE & LANDSCAPE

Foreshore structure



ARCHITECTURE & LANDSCAPE

Foreshore structure



- Architecture and Landscape works: Q1 2023 to Q3 2024
- Kiosk construction: throughout 2023

KIOSK



COMMUNITY INVESTMENT & LEGACY



CVB Staff member will climb Ben Nevis to raise funds for Rural Development Foundation charity Maternity Clinic



CVB staff completed the London Marathon, raising funds for the Children's Liver Disease Foundation and JDRF UK, a type 1 diabetes research charity.



Our site General Foreman, committed to climbing the shaft's 65m high staircase until he reached the equivalent distance as ascending Mount Everest reaching his fundraising goal of £2,000 for Prostate Cancer UK.



National Junior Indoor Rowing Championships. Staff raised funds for London Youth Rowing.



Our Deptford Church Street site team ran a sponsored half marathon at Hampton Court and also donated their Tideway RightWay team award to a Syrian earthquake charity.



COMMUNITY INVESTMENT & LEGACY



**SKILLS
FOR LIFE**

Apprenticeships
National Apprenticeship Week
6th to 12th February 2023



Tideway & CVB continue support for STEM, providing interview preparatory skills, CV building, careers advice and mentoring at the London Design & Engineering University Technical College and employability sessions at Langdon Park in Tower Hamlets.



MITIGATION – if affected by Tideway’s work



Who do I go to for advice?

For personal assistance contact our Helpdesk: 08000 30 80 80 or helpdesk@tideway.london

For independent advice contact Independent Advisory Service (IAS) Helpline:
0800 917 8845 or info@tidewayias.co.uk

Applications to the Independent Compensation Panel

You can download an application form from the Tideway website:

www.tideway.london/help-advice/compensation-information/Independent-Compensation-Panel

The Helpdesk can submit your form to the Independent Compensation Panel (ICP) on your behalf, or you can submit your claim direct to the ICP: admin@tidewayicp.london

CONTACT US



If you have any questions or enquiries,
please contact the Tideway Helpdesk

Telephone: 0800 030 80 80

Email: Helpdesk@Tideway.London



Tideway

RECONNECTING LONDON WITH THE RIVER THAMES

#SuperSewer

www.tideway.london