

INFORMATION SHEET

2023-TDWAY- GREPS-150-ZZ-CO-700028
July 2023



GREENWICH PUMPING STATION

WORK UPDATE

From Monday 31 July until the end of September, we plan to remove the remaining temporary concrete tanks, or muck bins, adjacent to the river wall at Phoenix Wharf (see photograph overleaf).

Removal works will take place during normal working hours, Monday to Friday, with an increase in vehicle movements during the day. Concrete demolition requires machinery to break concrete up for removal from the site and can be noisy. We will be using saw cutting to reduce mechanical demolition as much as possible, working between 8am and 4pm within noise limits agreed with the council. Damping down will be used to reduce dust.

The site team will continue to try our best to minimise disruption, but we understand some people are affected more than others by construction work such as noise and vibration. If you feel you may be affected by any of Tideway's work, including these activities, contact the Helpdesk - helpdesk@tideway.london - to discuss support available through the Independent Compensation Panel process.

The sewer is expected to be operational in the latter half of 2025, working to clean up the River Thames for the benefit of many future generations of Londoners.

We would like to thank you for your patience and co-operation while we continue construction for the Thames Tideway Tunnel at the Greenwich Pumping Station site.

KEY INFO

WORKING HOURS

- Normal: Monday to Friday: 8am to 6pm, Saturday 8am to 1pm
- Extended: Monday to Friday: 6pm to 10pm, Saturday 1pm to 5pm (in the CSO)
- Continuous - inside the acoustic enclosure: 24/5 (not Saturday nights or Sundays)
- Up to one hour start up and shut down periods before and after these times

WHAT TO EXPECT

- Increase in noisier activities at Phoenix Wharf
- Increase in vehicle movements during daytime

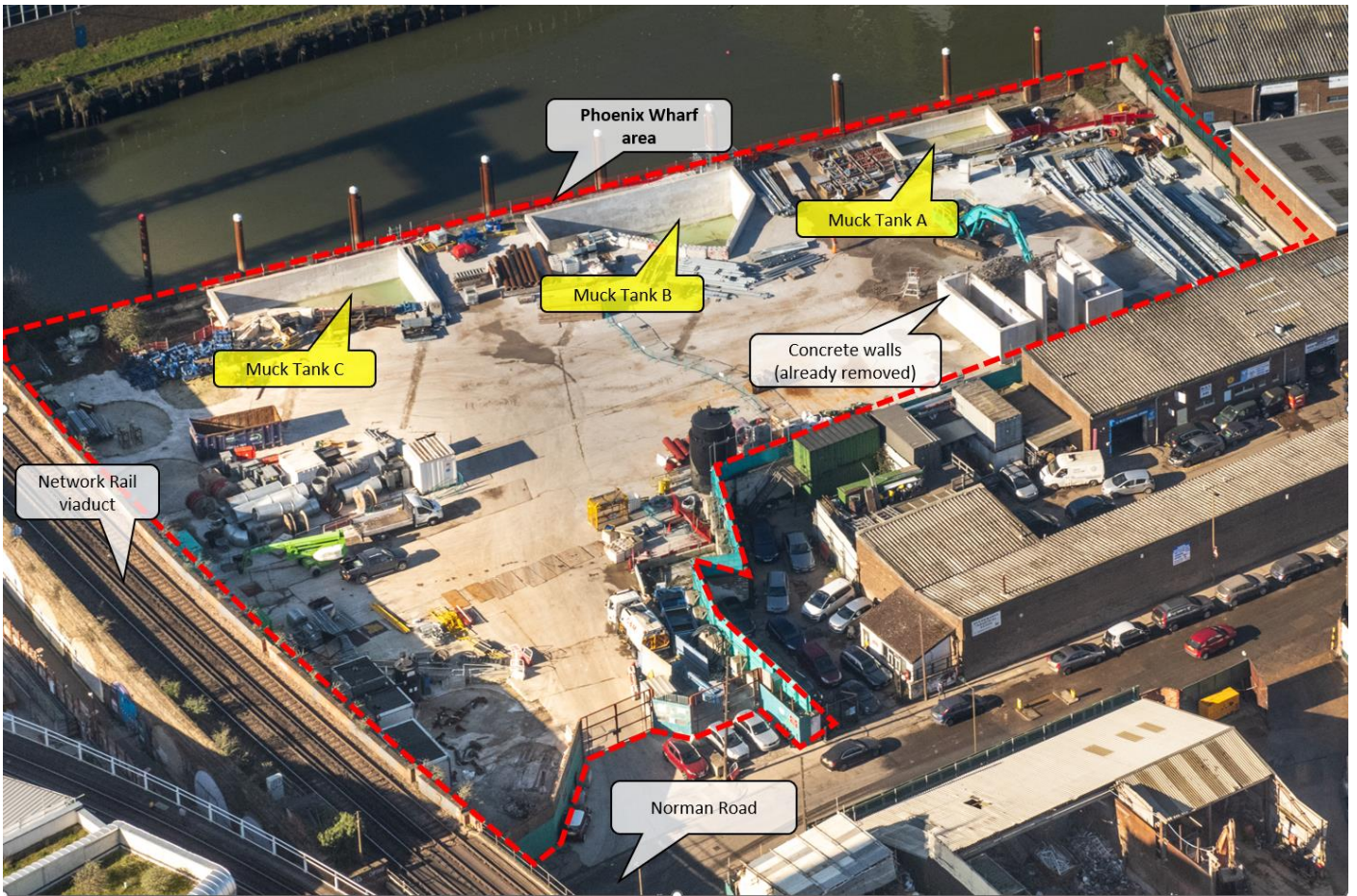
WHAT WE WILL DO

- Continue to use best practice
- Monitor noise & dust levels
- Hold Community Liaison Working Group meetings. Contact the Helpdesk to join the next one

24 HOUR HELPDESK 08000 30 80 80

helpdesk@tideway.london | Freepost TIDEWAY
www.tideway.london





Aerial view of Phoenix Wharf, situated to the east of Deptford Creek, showing the concrete muck tanks to be removed via Norman Road. The mooring poles in the Creek (shown at the top) will be removed from November.

We are happy to provide information in other languages and formats such as braille or large print. Please contact the Tideway Helpdesk on 08000 308080.