

INFORMATION SHEET



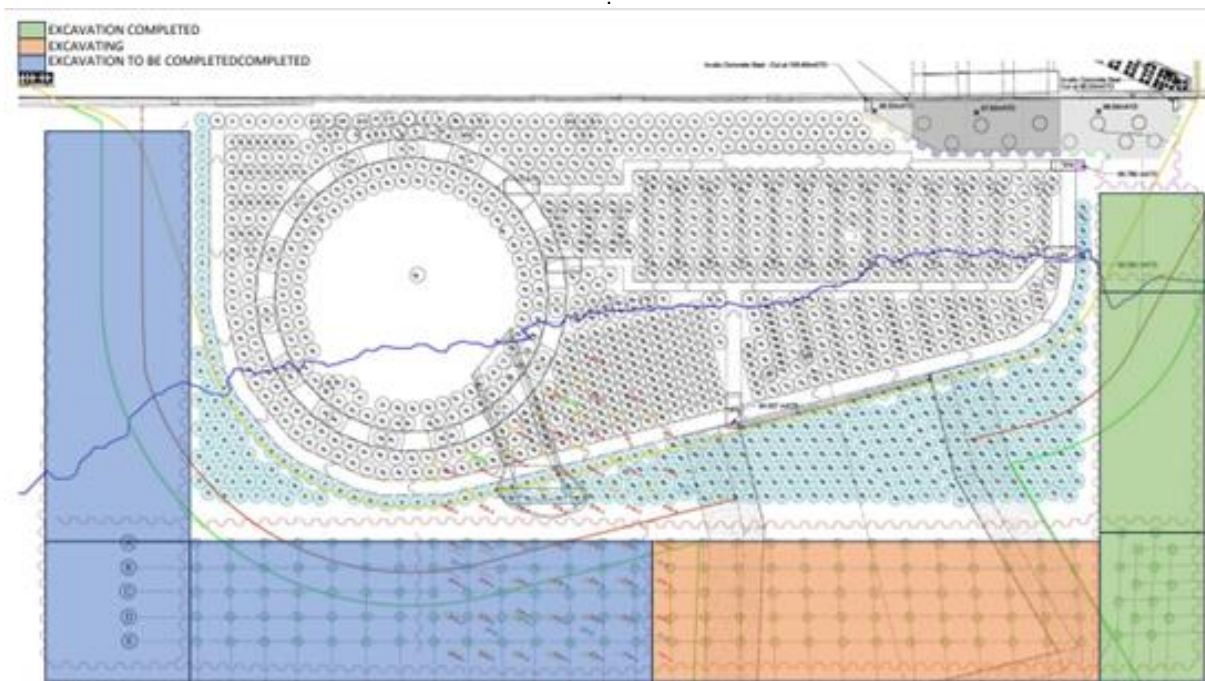
2023-TDWAY- KEMPF-150-ZZ-CO-700032
October 2023



KING EDWARD MEMORIAL PARK FORESHORE - WORKS UPDATE

Cofferdam Removal: the cofferdam is the temporary area of land that we built out into the river so that we could construct a drop shaft to link to the new super sewer. Once the cofferdam's removed, the new river wall will be publicly visible for the first time.

The cofferdam structure has been split into cells and we are removing one cell at a time. We began closest to Free Trade Wharf (the top right green cell) and are now working in the orange cell, moving clockwise to excavate the infill, which will be taken away by barge.



KEY INFO

Normal working hours:

- Monday to Friday 8am – 6pm
- Saturdays 8am to 1pm
- Some barge movements outside of these hours due to tidal requirements

Activities include:

Breaking out of concrete slabs, excavation of infill and removal of sheet piles

24 HOUR HELPDESK 08000 30 80 80

helpdesk@tideway.london | Freepost TIDEWAY
www.tideway.london



A recent photograph of the site



The concrete working platform is being cut into sections, broken up and removed, to be reused as aggregate. We are now using two excavator machines with hydraulic breakers, to speed up the process as they move clockwise around the new, permanent structure.

The Giken Hydraulic Piler has now left the site, with one of the cranes soon to follow.

After Christmas, we plan to remove further piles with a crane-operated 'silent' extractor, as is currently happening at the Tideway Victoria site. This will involve a barge and crane. Where it is not possible to do so, the site team will have to revert back to using a vibration method to extract the piles.

To minimise disruption, wherever possible we will use the less intrusive pile removal equipment, appropriate noise mitigation such as noise blankets and continue to monitor noise levels to ensure we stay within limits approved by the local authority.

* * * *

From next month, the sewer that currently overflows under the park and into the river near Free Trade Wharf will be diverted through the new sewer structures and into the river. Eventually, this flow will be diverted downwards into the Thames Tideway Tunnel, once operational in 2025.

The team will be placing the final cover slab onto the top of the shaft in the coming weeks. Concrete is being poured around the shaft at surface level and work to erect the kiosk in the corner of the park continues.

Once the area nears construction completion, we will begin the architecture and landscaping phase of the project.

Finally for now, the legato concrete block that sits on the foreshore to protect the Free Trade Wharf jetty, will be removed using a crane in the coming months.

INFORMATION SHEET

2023-TDWAY- KEMPF-150-ZZ-CO-700032
October 2023



If you feel affected by our work, please contact the Helpdesk, who can advise you on support available through the Independent Compensation Panel. Typical mitigation could include noise cancelling headphones or temporary respite.

If you would like to make an application to the Independent Compensation Panel (ICP), please contact the Helpdesk at helpdesk@tideway.london to request a copy of the application form.

We would like to thank you for your patience and co-operation while we continue construction for the super sewer at King Edward Memorial Park Foreshore.

The next update is planned for the new year.

We are happy to provide information in other languages and formats such as braille or large print. Please contact the Tideway Helpdesk on 08000 308080.

KEY INFO

Normal working hours:

- Monday to Friday 8am – 6pm
- Saturdays 8am to 1pm
- Some barge movements outside of these hours due to tidal requirements

Activities include:

Breaking out of concrete slabs, excavation of infill and removal of sheet piles

24 HOUR HELPDESK 08000 30 80 80

helpdesk@tideway.london | Freepost TIDEWAY
www.tideway.london

