

INFORMATION SHEET



Tideway



Tideway's work at Hammersmith Pumping Station – coming to an end

Tideway's construction work at Hammersmith Pumping Station, on Distillery Road near Hammersmith Bridge, is now substantially complete. This information sheet explains what we have done and what happens next.

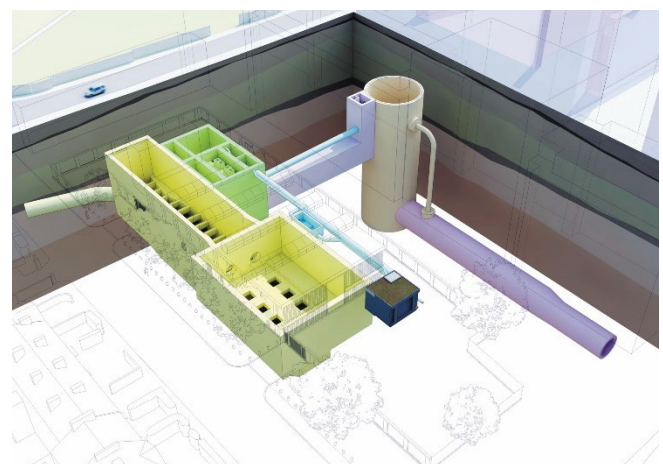
London's new super sewer

Our work at Hammersmith is part of the London super sewer project, a 25km tunnel under the River Thames, designed to protect the river from sewage pollution.

The completion of our work at Hammersmith is an important milestone before the project starts to 'go live' in 2024. This is when parts of the system will be switched on and will start to protect the Thames from sewage pollution for the first time. The tunnel is due to be fully operational in 2025, when it will prevent an estimated 95 per cent of sewage spills that currently overflow into the tidal Thames, improving the water quality for fish and other wildlife - and for people who use it for recreation and leisure.

At our Hammersmith site we have:

- Excavated a 32m-deep shaft which will channel and direct sewage overflows into the new 300m tunnel.
- Built a 300m tunnel linking the pumping station to the main 25km sewer.
- Built new air treatment structures to draw air into the sewer and ensure that the air that is released is filtered, to minimise odour.
- Installed mechanical and electrical equipment to make everything run smoothly.



Drawings to illustrate Hammersmith Pumping Station both above and below ground

INFORMATION SHEET



Tideway



Balfour Beatty

Public artwork

As part of a new public art programme to mark the Tideway project, we have installed a bronze artwork plaque. The artwork, unveiled in September 2023, is called 'Smart Queen Caroline' by artist Sarah Staton, can now be seen on the wall of the pumping station facing Chancellor's Road. For more information about the artwork and the idea behind it please scan the QR code below.



What happens next

Although construction is mostly complete, you may continue to see some Tideway staff working as we bring the super sewer into operation. There will also be occasional periods when we need to close part or all of the area while we undertake testing works for the new sewer tunnel.

Hammersmith Pumping Station will remain as an operational Thames Water Pumping Station, but in a reduced capacity as the majority of the storm overflows will be diverted into the Thames Tideway Tunnel instead of being pumped into the river.

Keeping in touch

Our Helpdesk will remain open until 2025. If you have any questions, comments or feedback call us on 0800 030 8080 or email helpdesk@tideway.london.

You can also find lots of information on our website www.tideway.london and social media channels @tidewaylondon. Use the QR code to link directly to our Hammersmith site pages.

Thank you once again for your patience, interest and support.

The Tideway team



24 HOUR HELPDESK 08000 30 80 80

helpdesk@tideway.london | Freepost TIDEWAY

www.tideway.london



@TidewayLondon