

INFORMATION SHEET



2024-TDWAY- KEMPF-150-ZZ-CO-700033
January 2024



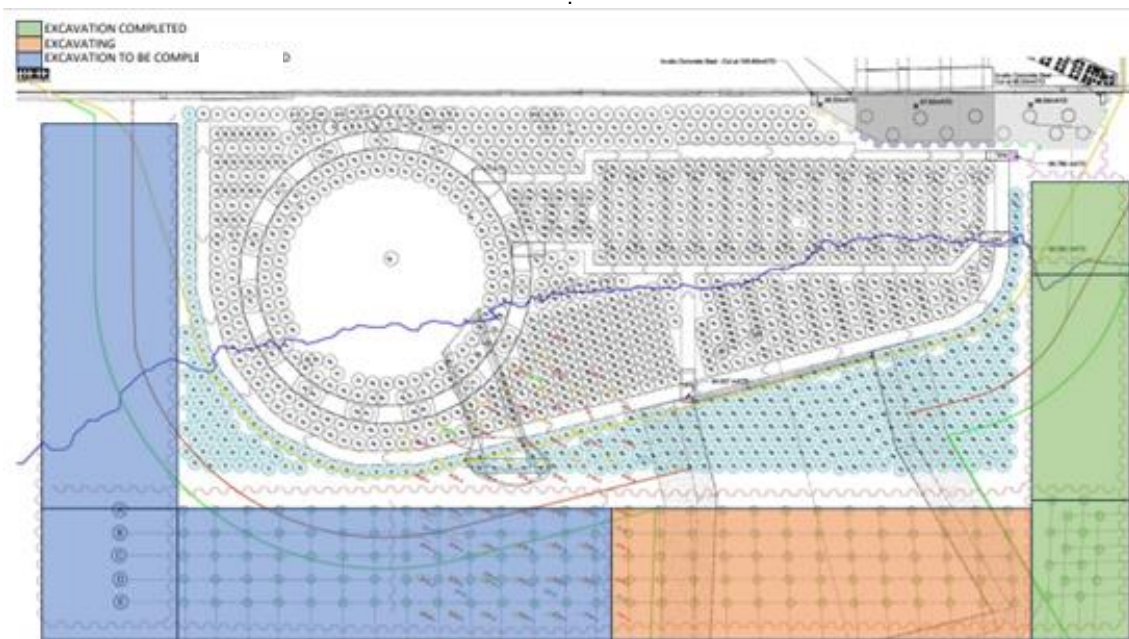
GRANDS PROJETS



KING EDWARD MEMORIAL PARK FORESHORE - WORKS UPDATE

Works for the cofferdam removal are going well. The cofferdam is the temporary area of land that we built out into the river so we could construct a drop shaft and structures for the new super sewer. As the cofferdam is removed, the new river wall is becoming visible for the first time.

The cofferdam structure was split into cells, which we are removing one at a time. We began closest to Free Trade Wharf (the top right green cell) and are now working in the orange cells, moving clockwise to excavate the material which is taken away by barge.



KEY INFO

Normal working hours:

- Monday to Friday: 8am to 6pm
- Saturdays: 8am to 1pm
- Some barge movements outside of these hours due to tidal requirements

Activities include:

- Breaking out concrete slabs, excavation of material and removal of sheet piles

24 HOUR HELPDESK 08000 30 80 80

helpdesk@tideway.london | Freepost TIDEWAY
www.tideway.london





The concrete working platform, which formed the surface of the cofferdam, is being cut into sections, broken up and removed, to be reused as aggregate.

We are using two excavator machines, with hydraulic breakers to speed up the process as they move clockwise around the new, permanent structure. We have removed about half the concrete.

Within the next few weeks, we will be restarting the cofferdam sheet pile extraction. We plan to bring in a barge and crane, moored adjacent to the site, to operate a crane-mounted 'silent' extractor previously used at the Tideway Victoria site. Where it is not possible to remove the piles using this method, the site team will need to revert to using a vibration method. The team will continue to use appropriate noise mitigation such as noise blankets and monitor noise levels to ensure we stay within limits approved by the local authority.

The final hydraulic structure connection is well underway, with the first sections of concrete walls poured. Once the remaining walls are poured, the chambers will be covered.

* * * *

The shaft is now completely covered, with the team working on preparations for the planned architectural, landscaping and finishing works.

Once our works are complete, flows from the northeastern storm relief sewer that are currently discharged into the river will be diverted downwards into the Thames Tideway Tunnel. The tunnel will begin to receive flows later this year and be fully operational in 2025.

* * * *

If you feel affected by our work, please contact the Helpdesk, who can advise you on support available through the Independent Compensation Panel. Typical mitigation could include noise cancelling headphones or temporary respite.

If you would like to make an application to the Independent Compensation Panel (ICP), please contact the Helpdesk at helpdesk@tideway.london to request a copy of the application form.

* * * *

The next Community Liaison Working Group will be a drop-in session at the Shadwell Centre, opposite Free Trade Wharf, on Monday 15 January between 6:30 and 7:30 p.m.

You are welcome to come and talk to the site team about our progress and plans for the super sewer and the future of the site.

We are happy to provide information in other languages and formats such as braille or large print. Please contact the Tideway Helpdesk on 08000 308080