

King Edward Memorial Park Foreshore (KEMPF)

Community Liaison Working Group – drop-in session
Shadwell Centre, 15 January 2024



Tideway



Agenda

1. Welcome
2. Site Update
3. Noise and Environment
4. Mitigation and Contacting Tideway
5. Legacy and Community Investment
6. Questions
7. Any Other Business



**King Edward
Memorial Park
Foreshore
(KEMPF)**

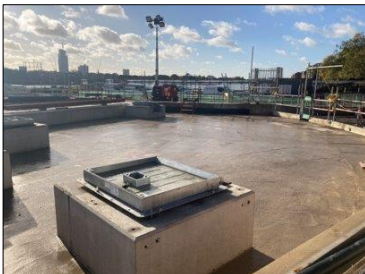
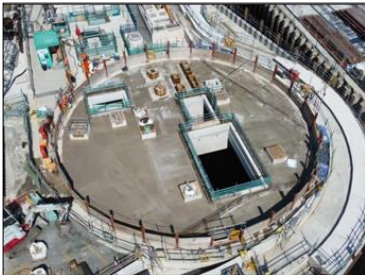
**Jo Kujovic
Project Manager**

KEMPF – Aerial View (Aug 2023)



KEMPF – Progress 2023

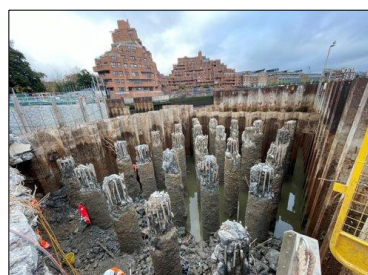
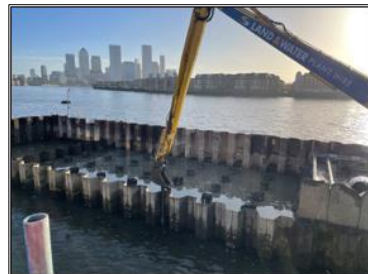
Shaft



Riverwall cladding



Cofferdam removal



Lower path

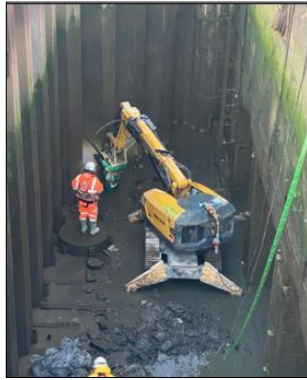


Curved bench

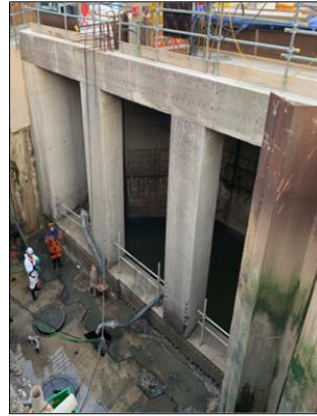


KEMPF – Progress 2023 continued

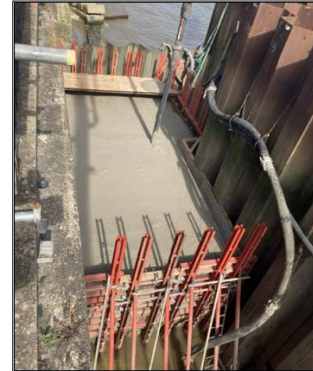
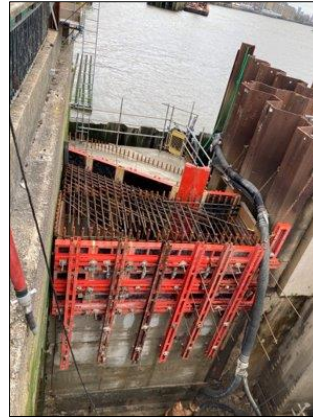
North East Sewer Relief (NESR)



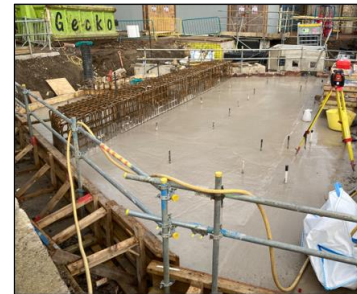
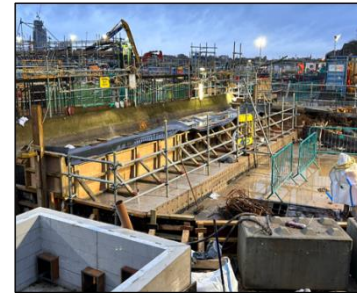
Upper Interception CC



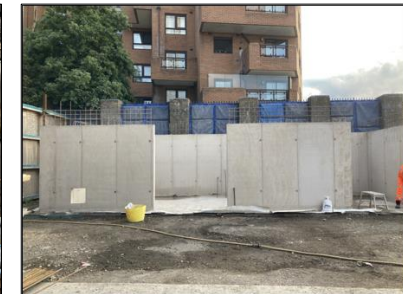
Mass Concrete Block



North East Sewer Relief (NESR)



Kiosk



KEMPF – Upcoming Works

Cofferdam removal

- Requires re-sequencing which includes additional marine plant and equipment including vibratory hammer as of w/c 15 January (see information sheet)

North East area

- Upper interception chamber
- Mass concrete block

Architecture and Landscaping

- Soft and hard landscaping, however as part of these works Tree 26 will need to be removed
- Intertidal terraces

Completion

- Physical works are expected to be completed by the end of the year

Opening to the public

- Thames Path
- King Edward Memorial Park

KEMPF – Programme 2024/2025

Key Activity	Jan-Mar 2024	Apr-Jun 2024	Jul-Sep 2024	Oct-Dec 2024	Jan-Mar 2025	Apr-Jun 2025
North-East Area						
Cofferdam Removal						
Architecture & landscaping						
Site Demobilisation						
Commissioning						

KEMPF – Final Scheme



KEMPF – Final Scheme



KEMPF – Final Scheme



Noise and Environment

Lydia Claxton
Environmental Advisor

Environment: Noise and Air Quality

Section 61 Overview

Working Hours

Standard hours: 08:00-18:00 (Monday to Saturday)

Extended hours: 05:00 to 08:00 and 18:00 to 22:00 (Monday to Friday)

Including:

- Concrete pours
- Drainage and excavation dewatering
- Barge movements
- Cofferdam removal works – tidally restricted

Mobilisation and Demobilisation: 07:00-08:00 & 18:00-19:00
(Standard hours) 04:30-05:00 & 22:00-22:30 (extended hours)

- Briefings, inspections, safety start up checks, concrete wagons arriving for testing, ventilation fan switched on.

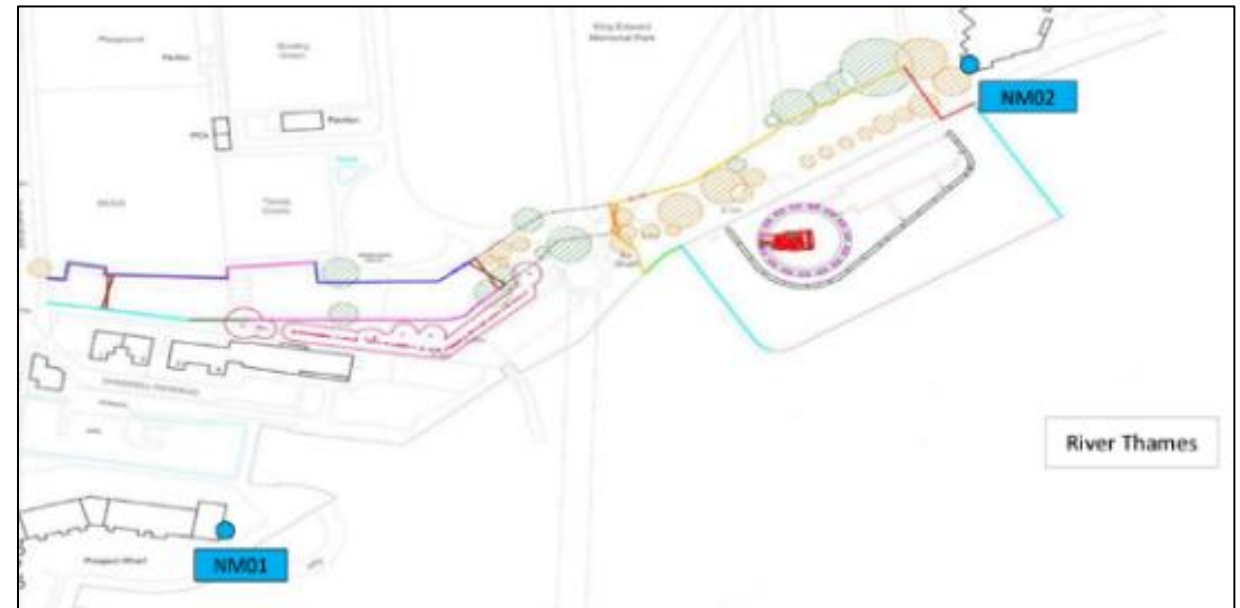
Maintenance: 08:00-17:00 (Saturday) 10:00-16:00 (Sunday)

- Plant maintenance and installation/maintenance of services such as dewatering

Section 61 Exceedances

- **Noise** (June 23 - Current): 0 out of 40 allowed TAP exceedances during 6 month period.
- **Air** (June 23 - Current): 0

Monitoring Locations



Mitigation & Contacting Tideway

Emily Black
Engagement Manager

How To Make A Claim if Affected By Tideway's Work

Who do I go to for advice?

Independent Advisory Service (IAS) Helpline for independent advice:

- 0800 917 8845 or info@tidewayias.co.uk
- For personal assistance and advice contact our Helpdesk.
 - Helpdesk: 08000 30 80 80 / helpdesk@tideway.london

How do I submit my claim?

The Helpdesk can submit your claim to the Independent Compensation Panel (ICP) on your behalf, or you can submit your claim direct to the ICP: admin@tidewayicp.london

The IAS can send you a claim form, or you can download the form off the Tideway website: www.tideway.london/help-advice/compensation-information/Independent-Compensation-Panel

Contact us and stay up to date

- Email us at helpdesk@tideway.london
- Call our 24 hour number **08000 30 80 80**

Follow us on our social media platforms:



[Twitter / X](#)



[Facebook](#)



[Instagram](#)



[LinkedIn](#)



[YouTube](#)

Legacy and Community Investment

Martin Griffiths

Senior Community Relations Manager

Awards and youth activities

Women in Engineering Awards



Chapter one Reading programme school visit



London Youth Rowing Skills Day



Work Experience – we hosted 17 students and volunteered more than 490 STEM hours supporting young people in 2023



Shaping Our World 2023



Fundraising & local community

Movember £1000 + raised for men's charity



Ben Nevis Climb for Bangladeshi Maternity Ward



Children's liver disease charity - London Marathon



Clean ups by site team



Juvenile Diabetes Research Foundation - London Marathon run



Royal Marsden Hospital run



Macmillan Cancer Support Bake sale



London Youth Rowers - National Junior Indoor Rowing Championships





Tideway

RECONNECTING LONDON WITH THE RIVER THAMES

#SuperSewer

www.tideway.london