

# WEEKLY SITE UPDATE

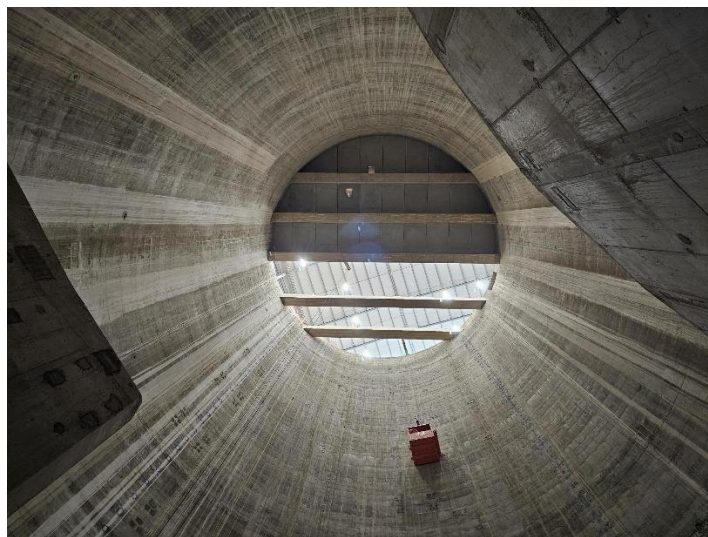
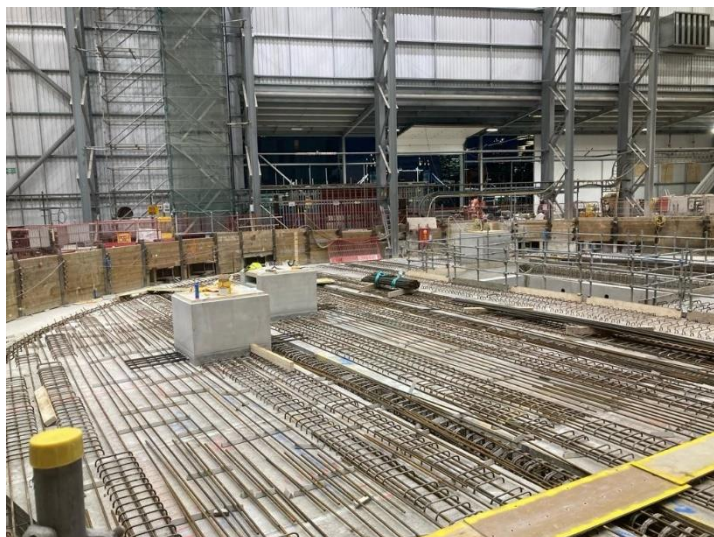


19 January 2024

## THIS WEEK

As we head towards the end of construction, we have begun to dismantle the initial cladding panels of the acoustic enclosure. We also:

- installed steel reinforcement for the shaft cover slab and have been installing the precast slabs. An image of this is below
- continued snagging works inside the shaft
- progressed with the installation of the temporary equipment which will dewater the water treatment plant in preparation for its removal
- continued with construction of the capping beam on the western side of the site. This will connect the new permanent river wall to the existing river wall. This work included installing steel reinforcement and the periodic breaking of concrete
- carried out MEICA (mechanical, electrical, instrumentation, control and automation) works in the below ground air treatment unit and have been installing the steel frame and precast units for the above ground electrical and control kiosk.



*The left image shows steel fixing over the shaft cover slab concrete planks.  
On the right an upward view from inside the shaft shows the partly completed cover slab.*

## THIS WEEKEND

The team will be undertaking crane maintenance within the acoustic enclosure.

24 HOUR HELPDESK 08000 30 80 80  
helpdesk@tideway.london | Freepost TIDEWAY  
www.tideway.london



## NEXT WEEK

We will continue dismantling the acoustic enclosure and working on the shaft cover slab inside the acoustic enclosure, in preparation for upcoming concrete pours.

The site team will continue MEICA (mechanical, electrical, instrumentation, control and automation) works in the air treatment unit.

On the east side of the site, adjacent to the rear of Fountain Green Square, works to construct the electrical and control kiosk, including installing the steel frame and precast units, will continue.

Works in this area of the site will continue as part of the long term architectural and landscaping works.

We will continue with capping beam works with some periodic concrete breaking in the west of the site. We will also continue to prepare for the removal of the water treatment plant in the coming weeks.

## WORKING HOURS

We have now stopped overnight working inside the acoustic enclosure. Certain activities such as barge movements within the river foreshore for the removal of the noise enclosure and those that are dependent on the tide, may take place between 5am and 10pm.

## INDEPENDENT COMPENSATION PANEL

If you feel affected by our work, please continue to contact the Helpdesk, who can advise you on support available through the Independent Compensation Panel (ICP). If you would like to make an application to the ICP, please contact the Helpdesk at [helpdesk@tideway.london](mailto:helpdesk@tideway.london).

## OTHER NEWS – Section 106 Community Enhancement Fund

Under the project's Section 106 agreement, a Community Enhancement Fund of £1million was allocated to improve and enhance the area around our Chambers Wharf site. Funding can be spent on any positive project idea which can benefit the community within the area around the Chambers Wharf site and can be properly maintained in the future.

Further information on the fund and details about the application process is available on Southwark Council's [webpage](#). The next round of submissions close on **29 February**.

If you have any questions, wish to apply for the next round of voting, or are interested in joining the panel of local representatives, please email Jacqueline Christie at Southwark council: [Community.Engagement@southwark.gov.uk](mailto:Community.Engagement@southwark.gov.uk).

## CONTACT DETAILS

If you have any questions, contact the Tideway Helpdesk on 08000 30 80 80 or at [helpdesk@tideway.london](mailto:helpdesk@tideway.london).

Jacqueline Christie, Consultation and Involvement Officer for Southwark Council, can be contacted for Tideway enquiries at: [Community.Engagement@southwark.gov.uk](mailto:Community.Engagement@southwark.gov.uk)

The Southwark Council Environmental Health team can also be contacted directly if you have concerns about our work - [environment@southwark.gov.uk](mailto:environment@southwark.gov.uk)