

INFORMATION SHEET

2024-TDWAY- GREPS-150-ZZ-CO-700032
March 2024



GRANDS PROJETS



GREENWICH PUMPING STATION

CONSTRUCTION UPDATE

The team at the Greenwich Pumping Station site is continuing to take down the acoustic enclosure adjacent to Norman Road. The temporary structure allowed us to work 24 hours a day to construct the new super sewer tunnel underground.

We are not permitted to work near the DLR viaduct when trains are running, for safety reasons. This means we need to finish dismantling it at night, from 10pm to 7am.

We apologise for any disruption this essential work may cause and will, as always, be working within noise limits agreed with the council, with damping down used to reduce any dust.

The site team will continue to try our best to minimise disruption, but we understand some people are affected more than others by noise and vibration during construction work.

The updated schedule for night works is on the next page, with working hours in the Key Information box, below. Night working on the acoustic enclosure removal is expected to finish on 15 March.

Work is also going to resume at Phoenix Wharf, as we start working on the river walls and bed within Deptford Creek. More information is on the next page.

KEY INFO

WORKING HOURS ONSITE

- Normal: Monday to Friday: 8am to 6pm; Saturday 8am to 1pm
- Extended: Monday to Friday: 6pm to 10pm; Saturday 1pm to 5pm (in the CSO)
- Night: 10pm to 7am (for noise enclosure removal)
- Marine: 4am to 9pm as work is tidally dependent
- Up to one hour start up and shut down periods before & after these times

24 HOUR HELPDESK 08000 30 80 80
helpdesk@tideway.london | Freepost TIDEWAY
www.tideway.london



GREENWICH PUMPING STATION
ACOUSTIC ENCLOSURE DISMANTLING
NIGHT WORKS WORKS SCHEDULE

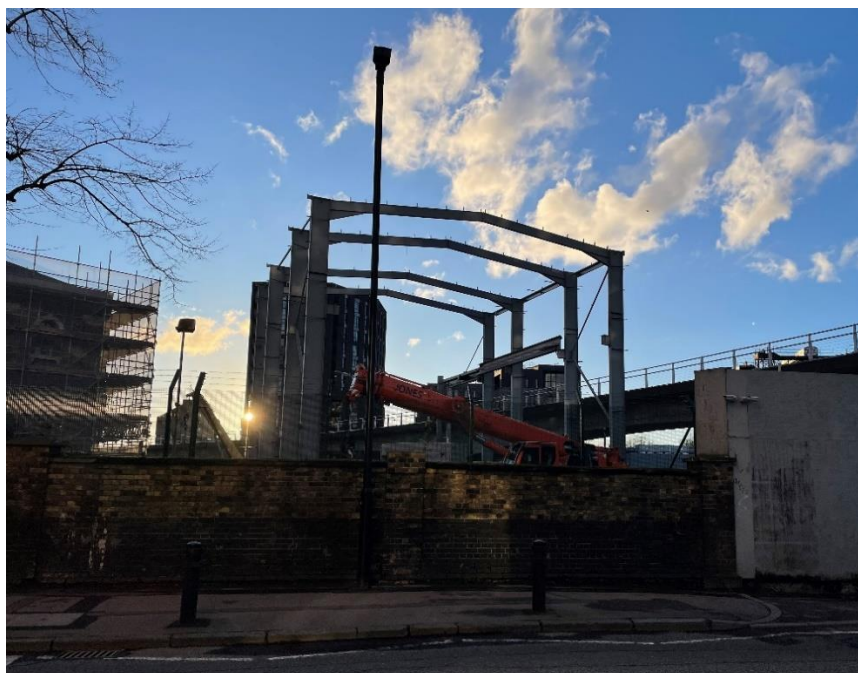
 Night Works	 No Works
 Day Works only	 To be confirmed

March 2024

Mon	Tue	Wed	Thu	Fri	Sat	Sun
4	5	6	7	8	9	10
11	12	13	14	15	16	17
18	19	20	21	22	23	24
25	26	27	28	29	30	31

April 2024

Mon	Tue	Wed	Thu	Fri	Sat	Sun
1	2	3	4	5	6	7
8	9	10	11	12	13	14
15	16	17	18	19	20	21
22	23	24	25	26	27	28
29	30	1	2	3	4	5



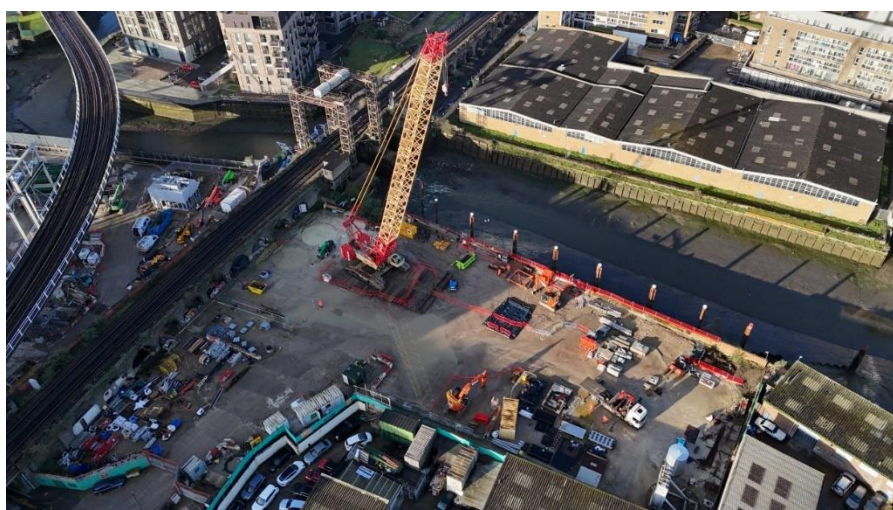
PHOENIX WHARF

North of the two railway lines, at the Phoenix Wharf area of our site shown below, we need to remove the temporary mooring, sheet piles and floating pontoon from Deptford Creek. These were all needed during tunnelling. This river reinstatement work will be starting imminently.

Some of this work may also be noisy and cause vibration, however it will mainly be happening during daytime working hours. The planned schedule is on the next page.

As the work is in the river, tidal conditions mean that we may need to occasionally start **as early as 4am** or finish **as late as 9pm**. On most tidally-affected days however, we will endeavor to either start around 6am or finish around 8pm. We will not be starting early and finishing late on the same day.

Deptford Creek ecological enhancement works begin later in the Spring.



Aerial view of Phoenix Wharf site activities

INFORMATION SHEET



GRANDS PROJETS



If you feel you may be affected by any of Tideway's work, including these activities, contact the Helpdesk - helpdesk@tideway.london - to discuss support available through the Independent Compensation Panel process.

We would like to thank you for your patience and co-operation while we continue construction for the Thames Tideway Tunnel at the Greenwich Pumping Station site.



Aerial of the location for upcoming site activities

KEY INFO

WORKING HOURS ONSITE

- Normal: Monday to Friday: 8am to 6pm; Saturday 8am to 1pm
- Extended: Monday to Friday: 6pm to 10pm; Saturday 1pm to 5pm (in the CSO)
- Night: 10pm to 7am (for noise enclosure removal)
- Marine: 4am to 9pm as work is tidally dependent
- Up to one hour start up and shut down periods before & after these times

24 HOUR HELPDESK 08000 30 80 80

helpdesk@tideway.london | Freepost TIDEWAY
www.tideway.london



GREENWICH PUMPING STATION
DEPTFORD CREEK & PHOENIX WHARF

	Low Vibration activities		No Works
	High Vibration activities		To be confirmed

March 2024

Mon	Tue	Wed	Thu	Fri	Sat	Sun
4	5	6	7	8	9	10
11	12	13	14	15	16	17
18	19	20	21	22	23	24
25	26	27	28	29	30	31

April 2024

Mon	Tue	Wed	Thu	Fri	Sat	Sun
1	2	3	4	5	6	7
8	9	10	11	12	13	14
15	16	17	18	19	20	21
22	23	24	25	26	27	28

May 2024

Mon	Tue	Wed	Thu	Fri	Sat	Sun
29	30	1	2	3	4	5
6	7	8	9	10	11	12
13	14	15	16	17	18	19
20	21	22	23	24	25	26

Schedule of Deptford Creek reinstatement work