

**THE THAMES WATER UTILITIES LIMITED (THAMES TIDEWAY TUNNEL) ORDER 2014 (AS AMENDED)<sup>1</sup> SI 2014 NO.2384**

**GENERAL VESTING DECLARATION No. 37**

This GENERAL VESTING DECLARATION NO. 37 is made the 12 day of June 2024 by Thames Water Utilities Limited ("Thames Water").

**WHEREAS:**

- 1 On 3 September 2014 an order entitled The Thames Water Utilities Limited (Thames Tideway Tunnel) Order 2014 (as amended) SI 2014 No.2384 ("the Order") was made (and came into force on 24 September 2014) by the Secretaries of State for Communities and Local Government and Environment, Food and Rural Affairs under the powers conferred on them by the Planning Act 2008 authorising Thames Water to acquire the land specified in the Schedule hereto.
- 2 Notice of the making/confirmation of the Order was first published in accordance with section 134 of the Planning Act 2008 on 19 September 2014.
- 3 Preliminary notice of the intention to make a general vesting declaration in respect of any of the land described in the Schedule hereto was first published on **24 November 2023** in accordance with section 3 of the Compulsory Purchase (Vesting Declarations) Act 1981 ("the 1981 Act")<sup>2</sup>, as modified by Article 34 of the Order.
- 4 That preliminary notice included the particulars specified in section 3(3) of the 1981 Act, as modified by Article 34 of the Order.
- 5 The notice referred to in (4) above specified the period of two months beginning with the date of its first publication as the period before the end of which this general vesting declaration could not be executed.

NOW THIS DEED WITNESSETH that, in exercise of the powers conferred on them by the Order and section 4 of the 1981 Act, Thames Water hereby declare:

Save in so far as they comprise or affect interests of Excluded Persons (listed in column 5 of the Schedule), the land described in the Schedule hereto being part of the land authorised to be acquired by the Order and more particularly delineated on the plans annexed hereto, together with the right to enter upon and take possession of the land shall vest in the Thames Water as from the end of the period of 28 days from the date on which the service of notices required by section 6 of the 1981 Act and in accordance with Article 34 of the Order is completed.

---

<sup>1</sup> The Order has been amended by (1) SI 2015/723 issued on 17 March 2015; (2) SI 2017/659 issued on 16 May 2017; (3) SI 2018/1262 issued 29 November 2018; (4) Notices of Variation Nos.1 and 2 Issued on 17 March 2015 and 17 August 2017 respectively in respect of the Deemed Marine Licence; (5) SI 2020/268 issued on 10 March 2020; and (6) SI 2020/862 issued on 13 August 2020.

<sup>2</sup> The Version of the 1981 Act is the version that applied immediately prior to amendments brought in by the Housing and Planning Bill on 13 October 2015 and as modified by the Order.

## SCHEDULE

### The land

<u>Reference number on attached notice plan</u>	<u>Description of the land</u>	<u>Associated Book of Reference plot number</u>	<u>Title Number</u>	<u>Excluded Persons</u>
DEPCS/2012	2.9 square metres of a stratum of subsoil below grassed area and land between Crossfield Street and Coffey Street where the upper surface of the stratum of the sub-soil is at a level equivalent to -31.1m (minus thirty one point one metres) OD (Ordnance Datum) or thereabout at its western boundary and -31.1m (minus thirty one point one metres) OD (Ordnance Datum) or thereabouts at its eastern boundary, and the lower surface of the stratum of the sub-soil is at a level equivalent to -48.7m (minus forty eight point seven metres) OD (Ordnance Datum) or thereabout at its western boundary and -48.7m (minus forty eight point seven metres) OD (Ordnance Datum) or thereabouts at its eastern boundary.	155 - London Borough of Lewisham	Unregistered	
DEPCS/2026	0.1 square metres of a stratum of subsoil below public road, central reservation and footway (Deptford Church Street, A2209) where the upper surface of the stratum of the sub-soil is at a level equivalent to -30.7m (minus thirty point seven metres) OD (Ordnance Datum) or thereabout at its western boundary and -30.7m (minus thirty point seven metres) OD (Ordnance Datum) or thereabouts at its eastern boundary, and the lower surface of the stratum of the sub-soil is at a level equivalent to -48.5m (minus forty eight point five metres) OD (Ordnance Datum) or thereabout at its western boundary and -48.5m (minus forty eight point five metres) OD (Ordnance Datum) or thereabouts at its eastern boundary.	176 - London Borough of Lewisham	438572	
DEPCS/2027	20.4 square metres of a stratum of subsoil below public road, central reservation and footway (Deptford Church Street, A2209) where the upper surface of the stratum of the sub-soil is at a level equivalent to -30.8m (minus thirty point eight metres) OD (Ordnance Datum) or thereabout at its western boundary and -30.8m (minus thirty point eight metres) OD (Ordnance Datum) or thereabouts at its eastern boundary, and the lower surface of the stratum of the sub-soil is at a level equivalent to -48.4m (minus forty eight point four metres) OD (Ordnance Datum) or thereabout at its western boundary and -48.4m (minus forty eight point four metres) OD (Ordnance Datum) or thereabouts at its eastern boundary.	176 - London Borough of Lewisham	442917	
DEPCS/2028	4.3 square metres of a stratum of subsoil below public road, central reservation and footway (Deptford Church Street, A2209) where the upper surface of the stratum of the sub-soil is at a level equivalent to -30.7m (minus thirty point seven metres) OD (Ordnance Datum) or thereabout at its western boundary and -30.7m (minus thirty point seven metres) OD (Ordnance Datum) or thereabouts at its eastern boundary, and the lower surface of the stratum of the sub-soil is at a level equivalent to -48.5m (minus forty eight point five metres) OD (Ordnance Datum) or thereabout at its western boundary and -48.5m (minus forty eight point five metres) OD (Ordnance Datum) or thereabouts at its eastern boundary.	176 - London Borough of Lewisham	137730	
DEPCS/2029	3.9 square metres of a stratum of subsoil below public road, central reservation and footway (Deptford Church Street, A2209) where the upper surface of the stratum of	176 - London Borough of Lewisham	112214	

	the sub-soil is at a level equivalent to -30.7m (minus thirty point seven metres) OD (Ordnance Datum) or thereabout at its western boundary and -30.7m (minus thirty point seven metres) OD (Ordnance Datum) or thereabouts at its eastern boundary, and the lower surface of the stratum of the sub-soil is at a level equivalent to -48.5m (minus forty eight point five metres) OD (Ordnance Datum) or thereabout at its western boundary and -48.5m (minus forty eight point five metres) OD (Ordnance Datum) or thereabouts at its eastern boundary.			
DEPCS/2035	110.5 square metres of a stratum of subsoil below grassed area, wall and land (between Crossfield Street, Coffey Street and Deptford Church Street) where the upper surface of the stratum of the sub-soil is at a level equivalent to -31.1m (minus thirty one point one metres) OD (Ordnance Datum) or thereabout at its western boundary and -31.1m (minus thirty one point one metres) OD (Ordnance Datum) or thereabouts at its eastern boundary, and the lower surface of the stratum of the sub-soil is at a level equivalent to -48.7m (minus forty eight point seven metres) OD (Ordnance Datum) or thereabout at its western boundary and -48.7m (minus forty eight point seven metres) OD (Ordnance Datum) or thereabouts at its eastern boundary.	156 - London Borough of Lewisham	SGL164777	
DEPCS/2044	5.6 square metres of a stratum of subsoil below grassed area, wall and land (between Crossfield Street, Coffey Street and Deptford Church Street) where the upper surface of the stratum of the sub-soil is at a level equivalent to -31.1m (minus thirty one point one metres) OD (Ordnance Datum) or thereabout at its western boundary and -31.1m (minus thirty one point one metres) OD (Ordnance Datum) or thereabouts at its eastern boundary, and the lower surface of the stratum of the sub-soil is at a level equivalent to -48.7m (minus forty eight point seven metres) OD (Ordnance Datum) or thereabout at its western boundary and -48.7m (minus forty eight point seven metres) OD (Ordnance Datum) or thereabouts at its eastern boundary.	155 - London Borough of Lewisham	SGL164777	
DEPCS/2046	120.2 square metres of a stratum of subsoil below grassed area, wall and land (between Crossfield Street, Coffey Street and Deptford Church Street) where the upper surface of the stratum of the sub-soil is at a level equivalent to -31m (minus thirty one metres) OD (Ordnance Datum) or thereabout at its western boundary and -31m (minus thirty one metres) OD (Ordnance Datum) or thereabouts at its eastern boundary, and the lower surface of the stratum of the sub-soil is at a level equivalent to -48.5m (minus forty eight point five metres) OD (Ordnance Datum) or thereabout at its western boundary and -48.5m (minus forty eight point five metres) OD (Ordnance Datum) or thereabouts at its eastern boundary.	156 - London Borough of Lewisham	SGL50271	
DEPCS/2047	336.3 square metres of a stratum of subsoil below grassed area, wall and land (between Crossfield Street, Coffey Street and Deptford Church Street) where the upper surface of the stratum of the sub-soil is at a level equivalent to -31m (minus thirty one metres) OD (Ordnance Datum) or thereabout at its western boundary and -31m (minus thirty one metres) OD (Ordnance Datum) or thereabouts at its eastern boundary, and the lower surface of the stratum of the sub-soil is at a level equivalent to -48.5m (minus forty eight point five metres) OD (Ordnance Datum) or thereabout at its western	156 - London Borough of Lewisham	SGL50268	

	boundary and -48.5m (minus forty eight point five metres) OD (Ordnance Datum) or thereabouts at its eastern boundary.			
DEPCS/2048	436.1 square metres of a stratum of subsoil below grassed area, wall and land (between Crossfield Street, Coffey Street and Deptford Church Street) where the upper surface of the stratum of the sub-soil is at a level equivalent to -30.9m (minus thirty point nine metres) OD (Ordnance Datum) or thereabout at its western boundary and -30.9m (minus thirty point nine metres) OD (Ordnance Datum) or thereabouts at its eastern boundary, and the lower surface of the stratum of the sub-soil is at a level equivalent to -48.4m (minus forty eight point four metres) OD (Ordnance Datum) or thereabout at its western boundary and -48.4m (minus forty eight point four metres) OD (Ordnance Datum) or thereabouts at its eastern boundary.	156 - London Borough of Lewisham	442917	
DEPCS/2325	199.9 square metres of a stratum of subsoil below public road, central reservation and footway (Deptford Church Street, A2209) where the upper surface of the stratum of the sub-soil is at a level equivalent to -30.9m (minus thirty point nine metres) OD (Ordnance Datum) or thereabout at its western boundary and -30.8m (minus thirty point eight metres) OD (Ordnance Datum) or thereabouts at its eastern boundary, and the lower surface of the stratum of the sub-soil is at a level equivalent to -48.4m (minus forty eight point four metres) OD (Ordnance Datum) or thereabout at its western boundary and -48.3m (minus forty eight point three metres) OD (Ordnance Datum) or thereabouts at its eastern boundary.	176 - London Borough of Lewisham	Unregistered	
GRECT/2213	325 square metres of a stratum of subsoil below grassed area and shrubbery (off Rainsborough Avenue) where the upper surface of the stratum of the sub-soil is at a level equivalent to -34m (minus thirty four metres) OD (Ordnance Datum) or thereabout at its western boundary and -34m (minus thirty four metres) OD (Ordnance Datum) or thereabouts at its eastern boundary, and the lower surface of the stratum of the sub-soil is at a level equivalent to -51.9m (minus fifty one point nine metres) OD (Ordnance Datum) or thereabout at its western boundary and -51.9m (minus fifty one point nine metres) OD (Ordnance Datum) or thereabouts at its eastern boundary.	35 - London Borough of Lewisham	SGL34177	
GRECT/2214	150.3 square metres of a stratum of subsoil below garages, car park and access (Rainsborough Avenue) where the upper surface of the stratum of the sub-soil is at a level equivalent to -34m (minus thirty four metres) OD (Ordnance Datum) or thereabout at its western boundary and -33.8m (minus thirty three point eight metres) OD (Ordnance Datum) or thereabouts at its eastern boundary, and the lower surface of the stratum of the sub-soil is at a level equivalent to -51.9m (minus fifty one point nine metres) OD (Ordnance Datum) or thereabout at its western boundary and -51.7m (minus fifty one point seven metres) OD (Ordnance Datum) or thereabouts at its eastern boundary.	36 - London Borough of Lewisham	SGL49820	
GRECT/2215	38 square metres of a stratum of subsoil below flats (Pendennis House) where the upper surface of the stratum of the sub-soil is at a level equivalent to -33.9m (minus thirty three point nine metres) OD (Ordnance Datum) or thereabout at its western boundary and -33.9m (minus thirty three point nine metres) OD (Ordnance Datum) or thereabouts at its eastern boundary, and the lower surface	37 - London Borough of Lewisham	SGL49820	

	of the stratum of the sub-soil is at a level equivalent to -51.8m (minus fifty one point eight metres) OD (Ordnance Datum) or thereabout at its western boundary and -51.8m (minus fifty one point eight metres) OD (Ordnance Datum) or thereabouts at its eastern boundary.			
GRECT/2216	2403 square metres of a stratum of subsoil below grassed area, shrubbery and footway (off Rainsborough Avenue) where the upper surface of the stratum of the sub-soil is at a level equivalent to -34m (minus thirty four metres) OD (Ordnance Datum) or thereabout at its western boundary and -33.6m (minus thirty three point six metres) OD (Ordnance Datum) or thereabouts at its eastern boundary, and the lower surface of the stratum of the sub-soil is at a level equivalent to -51.8m (minus fifty one point eight metres) OD (Ordnance Datum) or thereabout at its western boundary and -51.5m (minus fifty one point five metres) OD (Ordnance Datum) or thereabouts at its eastern boundary.	38 - London Borough of Lewisham	SGL185157	
GRECT/2217	74.6 square metres of a stratum of subsoil below footway and car park (Eddystone Tower) where the upper surface of the stratum of the sub-soil is at a level equivalent to -33.7m (minus thirty three point seven metres) OD (Ordnance Datum) or thereabout at its western boundary and -33.6m (minus thirty three point six metres) OD (Ordnance Datum) or thereabouts at its eastern boundary, and the lower surface of the stratum of the sub-soil is at a level equivalent to -51.6m (minus fifty one point six metres) OD (Ordnance Datum) or thereabout at its western boundary and -51.5m (minus fifty one point five metres) OD (Ordnance Datum) or thereabouts at its eastern boundary.	42 - London Borough of Lewisham	SGL45755	
GRECT/2218	190.3 square metres of a stratum of subsoil below grassed area, shrubbery and footway (off Rainsborough Avenue) where the upper surface of the stratum of the sub-soil is at a level equivalent to -33.7m (minus thirty three point seven metres) OD (Ordnance Datum) or thereabout at its western boundary and -33.6m (minus thirty three point six metres) OD (Ordnance Datum) or thereabouts at its eastern boundary, and the lower surface of the stratum of the sub-soil is at a level equivalent to -51.5m (minus fifty one point five metres) OD (Ordnance Datum) or thereabout at its western boundary and -51.5m (minus fifty one point five metres) OD (Ordnance Datum) or thereabouts at its eastern boundary.	43 - London Borough of Lewisham	SGL185157	
GRECT/2219	332.1 square metres of a stratum of subsoil below public road and footways (Oxestalls Road) and arches and hardstanding below where the upper surface of the stratum of the sub-soil is at a level equivalent to -33.6m (minus thirty three point six metres) OD (Ordnance Datum) or thereabout at its western boundary and -33.6m (minus thirty three point six metres) OD (Ordnance Datum) or thereabouts at its eastern boundary, and the lower surface of the stratum of the sub-soil is at a level equivalent to -51.5m (minus fifty one point five metres) OD (Ordnance Datum) or thereabout at its western boundary and -51.4m (minus fifty one point four metres) OD (Ordnance Datum) or thereabouts at its eastern boundary.	47 - London Borough of Lewisham	SGL185157	
GRECT/2220	166.4 square metres of a stratum of subsoil below development site (Deptford Landings) where the upper surface of the stratum of the sub-soil is at a level equivalent to -33.6m (minus thirty three point six metres) OD (Ordnance Datum) or thereabout at its western boundary and -33.6m (minus thirty three point six metres)	49 - London Borough of Lewisham	TGL509805	

	OD (Ordnance Datum) or thereabouts at its eastern boundary, and the lower surface of the stratum of the sub-soil is at a level equivalent to -51.4m (minus fifty one point four metres) OD (Ordnance Datum) or thereabout at its western boundary and -51.4m (minus fifty one point four metres) OD (Ordnance Datum) or thereabouts at its eastern boundary.			
GRECT/2221	1.3 square metres of a stratum of subsoil below development site (Deptford Landings) where the upper surface of the stratum of the sub-soil is at a level equivalent to -33.6m (minus thirty three point six metres) OD (Ordnance Datum) or thereabout at its western boundary and -33.6m (minus thirty three point six metres) OD (Ordnance Datum) or thereabouts at its eastern boundary, and the lower surface of the stratum of the sub-soil is at a level equivalent to -51.4m (minus fifty one point four metres) OD (Ordnance Datum) or thereabout at its western boundary and -51.4m (minus fifty one point four metres) OD (Ordnance Datum) or thereabouts at its eastern boundary.	48 - London Borough of Lewisham	TGL509805	
GRECT/2222	7.6 square metres of a stratum of subsoil below public road and footways (Oxestalls Road) and arches and hardstanding below where the upper surface of the stratum of the sub-soil is at a level equivalent to -33.6m (minus thirty three point six metres) OD (Ordnance Datum) or thereabout at its western boundary and -33.6m (minus thirty three point six metres) OD (Ordnance Datum) or thereabouts at its eastern boundary, and the lower surface of the stratum of the sub-soil is at a level equivalent to -51.5m (minus fifty one point five metres) OD (Ordnance Datum) or thereabout at its western boundary and -51.4m (minus fifty one point four metres) OD (Ordnance Datum) or thereabouts at its eastern boundary.	51 - London Borough of Lewisham	TGL509805	
GRECT/2223	657.1 square metres of a stratum of subsoil below development site (Deptford Landings) where the upper surface of the stratum of the sub-soil is at a level equivalent to -33.6m (minus thirty three point six metres) OD (Ordnance Datum) or thereabout at its western boundary and -33.6m (minus thirty three point six metres) OD (Ordnance Datum) or thereabouts at its eastern boundary, and the lower surface of the stratum of the sub-soil is at a level equivalent to -51.4m (minus fifty one point four metres) OD (Ordnance Datum) or thereabout at its western boundary and -51.4m (minus fifty one point four metres) OD (Ordnance Datum) or thereabouts at its eastern boundary.	53 - London Borough of Lewisham	SGL159270	
GRECT/2224	1540.7 square metres of a stratum of subsoil below development site (Deptford Landings) where the upper surface of the stratum of the sub-soil is at a level equivalent to -33.6m (minus thirty three point six metres) OD (Ordnance Datum) or thereabout at its western boundary and -33.6m (minus thirty three point six metres) OD (Ordnance Datum) or thereabouts at its eastern boundary, and the lower surface of the stratum of the sub-soil is at a level equivalent to -51.4m (minus fifty one point four metres) OD (Ordnance Datum) or thereabout at its western boundary and -51.4m (minus fifty one point four metres) OD (Ordnance Datum) or thereabouts at its eastern boundary.	52 - London Borough of Lewisham	TGL214423, TGL588847	
GRECT/2225	85 square metres of a stratum of subsoil below development site (Deptford Landings) where the upper surface of the stratum of the sub-soil is at a level equivalent to -33.4m (minus thirty three point four metres)	54 - London Borough of Lewisham	TGL588847, TGL214423	

	OD (Ordnance Datum) or thereabout at its western boundary and -33.3m (minus thirty three point three metres) OD (Ordnance Datum) or thereabouts at its eastern boundary, and the lower surface of the stratum of the sub-soil is at a level equivalent to -51.2m (minus fifty one point two metres) OD (Ordnance Datum) or thereabout at its western boundary and -51.2m (minus fifty one point two metres) OD (Ordnance Datum) or thereabouts at its eastern boundary.			
GRECT/2226	1151.5 square metres of a stratum of subsoil below development site (Deptford Landings) where the upper surface of the stratum of the sub-soil is at a level equivalent to -33.3m (minus thirty three point three metres) OD (Ordnance Datum) or thereabout at its western boundary and -33.2m (minus thirty three point two metres) OD (Ordnance Datum) or thereabouts at its eastern boundary, and the lower surface of the stratum of the sub-soil is at a level equivalent to -51.2m (minus fifty one point two metres) OD (Ordnance Datum) or thereabout at its western boundary and -51m (minus fifty one metres) OD (Ordnance Datum) or thereabouts at its eastern boundary.	55 - London Borough of Lewisham	TGL588847, TGL214423	
GRECT/2227	838.9 square metres of a stratum of subsoil below development site (Deptford Landings) where the upper surface of the stratum of the sub-soil is at a level equivalent to -33.2m (minus thirty three point two metres) OD (Ordnance Datum) or thereabout at its western boundary and -33.1m (minus thirty three point one metres) OD (Ordnance Datum) or thereabouts at its eastern boundary, and the lower surface of the stratum of the sub-soil is at a level equivalent to -51.1m (minus fifty one point one metres) OD (Ordnance Datum) or thereabout at its western boundary and -50.9m (minus fifty point nine metres) OD (Ordnance Datum) or thereabouts at its eastern boundary.	56 - London Borough of Lewisham	TGL214423	
GRECT/2228	553.7 square metres of a stratum of subsoil below development site (Deptford Landings) where the upper surface of the stratum of the sub-soil is at a level equivalent to -33.1m (minus thirty three point one metres) OD (Ordnance Datum) or thereabout at its western boundary and -33m (minus thirty three metres) OD (Ordnance Datum) or thereabouts at its eastern boundary, and the lower surface of the stratum of the sub-soil is at a level equivalent to -50.9m (minus fifty point nine metres) OD (Ordnance Datum) or thereabout at its western boundary and -50.9m (minus fifty point nine metres) OD (Ordnance Datum) or thereabouts at its eastern boundary.	57 - London Borough of Lewisham	TGL214423	
GRECT/2229	92.3 square metres of a stratum of subsoil below public road and footways (Dragoon Road) where the upper surface of the stratum of the sub-soil is at a level equivalent to -33m (minus thirty three metres) OD (Ordnance Datum) or thereabout at its western boundary and -33m (minus thirty three metres) OD (Ordnance Datum) or thereabouts at its eastern boundary, and the lower surface of the stratum of the sub-soil is at a level equivalent to -50.9m (minus fifty point nine metres) OD (Ordnance Datum) or thereabout at its western boundary and -50.8m (minus fifty point eight metres) OD (Ordnance Datum) or thereabouts at its eastern boundary.	59 - London Borough of Lewisham	SGL407816	
GRECT/2230	2.6 square metres of a stratum of subsoil below grassed area (Norris House) where the upper surface of the stratum of the sub-soil is at a level equivalent to -33m (minus thirty three metres) OD (Ordnance Datum) or thereabout at its western boundary and -33m (minus thirty	60 - London Borough of Lewisham	LN69694	

	three metres) OD (Ordnance Datum) or thereabouts at its eastern boundary, and the lower surface of the stratum of the sub-soil is at a level equivalent to -50.8m (minus fifty point eight metres) OD (Ordnance Datum) or thereabout at its western boundary and -50.8m (minus fifty point eight metres) OD (Ordnance Datum) or thereabouts at its eastern boundary.			
GRECT/2231	5395.7 square metres of a stratum of subsoil below public road, central reservations and footways (Evelyn Street, A200) where the upper surface of the stratum of the sub-soil is at a level equivalent to -33m (minus thirty three metres) OD (Ordnance Datum) or thereabout at its western boundary and -32.2m (minus thirty two point two metres) OD (Ordnance Datum) or thereabouts at its eastern boundary, and the lower surface of the stratum of the sub-soil is at a level equivalent to -50.9m (minus fifty point nine metres) OD (Ordnance Datum) or thereabout at its western boundary and -50.1m (minus fifty point one metres) OD (Ordnance Datum) or thereabouts at its eastern boundary.	58 - London Borough of Lewisham	Unregistered	
GRECT/2232	3.1 square metres of a stratum of subsoil below public road and footway (Evelyn Street, A200) where the upper surface of the stratum of the sub-soil is at a level equivalent to -33m (minus thirty three metres) OD (Ordnance Datum) or thereabout at its western boundary and -32.2m (minus thirty two point two metres) OD (Ordnance Datum) or thereabouts at its eastern boundary, and the lower surface of the stratum of the sub-soil is at a level equivalent to -50.9m (minus fifty point nine metres) OD (Ordnance Datum) or thereabout at its western boundary and -50.1m (minus fifty point one metres) OD (Ordnance Datum) or thereabouts at its eastern boundary.	61 - London Borough of Lewisham	TGL41917	
GRECT/2233	18.7 square metres of a stratum of subsoil below hardstanding and access (off Evelyn Street) where the upper surface of the stratum of the sub-soil is at a level equivalent to -32.9m (minus thirty two point nine metres) OD (Ordnance Datum) or thereabout at its western boundary and -32.9m (minus thirty two point nine metres) OD (Ordnance Datum) or thereabouts at its eastern boundary, and the lower surface of the stratum of the sub-soil is at a level equivalent to -50.7m (minus fifty point seven metres) OD (Ordnance Datum) or thereabout at its western boundary and -50.7m (minus fifty point seven metres) OD (Ordnance Datum) or thereabouts at its eastern boundary.	63 - London Borough of Lewisham	TGL41917	
GRECT/2234	10 square metres of a stratum of subsoil below restaurant and forecourt (166, Evelyn Street) where the upper surface of the stratum of the sub-soil is at a level equivalent to -32.9m (minus thirty two point nine metres) OD (Ordnance Datum) or thereabout at its western boundary and -32.8m (minus thirty two point eight metres) OD (Ordnance Datum) or thereabouts at its eastern boundary, and the lower surface of the stratum of the sub-soil is at a level equivalent to -50.7m (minus fifty point seven metres) OD (Ordnance Datum) or thereabout at its western boundary and -50.8m (minus fifty point eight metres) OD (Ordnance Datum) or thereabouts at its eastern boundary.	64 - London Borough of Lewisham	TGL538097, TGL288764, SGL10301	
GRECT/2235	8 square metres of a stratum of subsoil below house and garden (168, Evelyn Street) where the upper surface of the stratum of the sub-soil is at a level equivalent to -32.8m (minus thirty two point eight metres) OD (Ordnance Datum) or thereabout at its western boundary and -32.8m (minus thirty two point eight metres) OD (Ordnance Datum) or thereabouts at its eastern boundary, and the	65 - London Borough of Lewisham	SGL10301	



	lower surface of the stratum of the sub-soil is at a level equivalent to -50.7m (minus fifty point seven metres) OD (Ordnance Datum) or thereabout at its western boundary and -50.7m (minus fifty point seven metres) OD (Ordnance Datum) or thereabouts at its eastern boundary.			
GRECT/2236	7.2 square metres of a stratum of subsoil below house and garden (170, Evelyn Street) where the upper surface of the stratum of the sub-soil is at a level equivalent to -32.8m (minus thirty two point eight metres) OD (Ordnance Datum) or thereabout at its western boundary and -32.8m (minus thirty two point eight metres) OD (Ordnance Datum) or thereabouts at its eastern boundary, and the lower surface of the stratum of the sub-soil is at a level equivalent to -50.7m (minus fifty point seven metres) OD (Ordnance Datum) or thereabout at its western boundary and -50.7m (minus fifty point seven metres) OD (Ordnance Datum) or thereabouts at its eastern boundary.	66 - London Borough of Lewisham	TGL472623, SGL10301	
GRECT/2237	6.4 square metres of a stratum of subsoil below house and garden (172, Evelyn Street) where the upper surface of the stratum of the sub-soil is at a level equivalent to -32.8m (minus thirty two point eight metres) OD (Ordnance Datum) or thereabout at its western boundary and -32.8m (minus thirty two point eight metres) OD (Ordnance Datum) or thereabouts at its eastern boundary, and the lower surface of the stratum of the sub-soil is at a level equivalent to -50.7m (minus fifty point seven metres) OD (Ordnance Datum) or thereabout at its western boundary and -50.7m (minus fifty point seven metres) OD (Ordnance Datum) or thereabouts at its eastern boundary.	67 - London Borough of Lewisham	SGL10301	
GRECT/2238	5.9 square metres of a stratum of subsoil below house and garden (174, Evelyn Street) where the upper surface of the stratum of the sub-soil is at a level equivalent to -32.8m (minus thirty two point eight metres) OD (Ordnance Datum) or thereabout at its western boundary and -32.8m (minus thirty two point eight metres) OD (Ordnance Datum) or thereabouts at its eastern boundary, and the lower surface of the stratum of the sub-soil is at a level equivalent to -50.7m (minus fifty point seven metres) OD (Ordnance Datum) or thereabout at its western boundary and -50.7m (minus fifty point seven metres) OD (Ordnance Datum) or thereabouts at its eastern boundary.	68 - London Borough of Lewisham	SGL10301	
GRECT/2239	4.9 square metres of a stratum of subsoil below house and garden (176, Evelyn Street) where the upper surface of the stratum of the sub-soil is at a level equivalent to -32.8m (minus thirty two point eight metres) OD (Ordnance Datum) or thereabout at its western boundary and -32.8m (minus thirty two point eight metres) OD (Ordnance Datum) or thereabouts at its eastern boundary, and the lower surface of the stratum of the sub-soil is at a level equivalent to -50.7m (minus fifty point seven metres) OD (Ordnance Datum) or thereabout at its western boundary and -50.6m (minus fifty point six metres) OD (Ordnance Datum) or thereabouts at its eastern boundary.	69 - London Borough of Lewisham	TGL70689, SGL10301	
GRECT/2240	2.6 square metres of a stratum of subsoil below arch, hardstanding and access (off Evelyn Street) where the upper surface of the stratum of the sub-soil is at a level equivalent to -32.8m (minus thirty two point eight metres) OD (Ordnance Datum) or thereabout at its western boundary and -32.8m (minus thirty two point eight metres) OD (Ordnance Datum) or thereabouts at its eastern boundary, and the lower surface of the stratum of the sub-soil is at a level equivalent to -50.6m (minus fifty point six metres) OD (Ordnance Datum) or thereabout at its western	70 - London Borough of Lewisham	SGL10301	

	boundary and -50.6m (minus fifty point six metres) OD (Ordnance Datum) or thereabouts at its eastern boundary.			
GRECT/2241	3.8 square metres of a stratum of subsoil below house and garden (180, Evelyn Street) where the upper surface of the stratum of the sub-soil is at a level equivalent to -32.8m (minus thirty two point eight metres) OD (Ordnance Datum) or thereabout at its western boundary and -32.8m (minus thirty two point eight metres) OD (Ordnance Datum) or thereabouts at its eastern boundary, and the lower surface of the stratum of the sub-soil is at a level equivalent to -50.6m (minus fifty point six metres) OD (Ordnance Datum) or thereabout at its western boundary and -50.6m (minus fifty point six metres) OD (Ordnance Datum) or thereabouts at its eastern boundary.	71 - London Borough of Lewisham	TGL217834	
GRECT/2242	2.4 square metres of a stratum of subsoil below house and garden (182, Evelyn Street) where the upper surface of the stratum of the sub-soil is at a level equivalent to -32.8m (minus thirty two point eight metres) OD (Ordnance Datum) or thereabout at its western boundary and -32.8m (minus thirty two point eight metres) OD (Ordnance Datum) or thereabouts at its eastern boundary, and the lower surface of the stratum of the sub-soil is at a level equivalent to -50.6m (minus fifty point six metres) OD (Ordnance Datum) or thereabout at its western boundary and -50.6m (minus fifty point six metres) OD (Ordnance Datum) or thereabouts at its eastern boundary.	73 - London Borough of Lewisham	TGL217834	
GRECT/2243	1.7 square metres of a stratum of subsoil below house and garden (184, Evelyn Street) where the upper surface of the stratum of the sub-soil is at a level equivalent to -32.8m (minus thirty two point eight metres) OD (Ordnance Datum) or thereabout at its western boundary and -32.8m (minus thirty two point eight metres) OD (Ordnance Datum) or thereabouts at its eastern boundary, and the lower surface of the stratum of the sub-soil is at a level equivalent to -50.6m (minus fifty point six metres) OD (Ordnance Datum) or thereabout at its western boundary and -50.6m (minus fifty point six metres) OD (Ordnance Datum) or thereabouts at its eastern boundary.	74 - London Borough of Lewisham	SGL10301	
GRECT/2244	0.6 square metres of a stratum of subsoil below fire station (Deptford Fire Station) garden and hardstanding (186, Evelyn Street) where the upper surface of the stratum of the sub-soil is at a level equivalent to -32.8m (minus thirty two point eight metres) OD (Ordnance Datum) or thereabout at its western boundary and -32.7m (minus thirty two point seven metres) OD (Ordnance Datum) or thereabouts at its eastern boundary, and the lower surface of the stratum of the sub-soil is at a level equivalent to -50.6m (minus fifty point six metres) OD (Ordnance Datum) or thereabout at its western boundary and -50.6m (minus fifty point six metres) OD (Ordnance Datum) or thereabouts at its eastern boundary.	75 - London Borough of Lewisham	TGL267953	
GRECT/2245	7.5 square metres of a stratum of subsoil below public road and central reservation (Evelyn Street, A200) where the upper surface of the stratum of the sub-soil is at a level equivalent to -32.6m (minus thirty two point six metres) OD (Ordnance Datum) or thereabout at its western boundary and -32.6m (minus thirty two point six metres) OD (Ordnance Datum) or thereabouts at its eastern boundary, and the lower surface of the stratum of the sub-soil is at a level equivalent to -50.5m (minus fifty point five metres) OD (Ordnance Datum) or thereabout at its western boundary and -50.5m (minus fifty point five metres) OD (Ordnance Datum) or thereabouts at its eastern boundary.	79 - London Borough of Lewisham	SGL678968	

GRECT/2246	0.1 square metres of a stratum of subsoil below public footway and basement (204, Evelyn Street) where the upper surface of the stratum of the sub-soil is at a level equivalent to -32.5m (minus thirty two point five metres) OD (Ordnance Datum) or thereabout at its western boundary and -32.5m (minus thirty two point five metres) OD (Ordnance Datum) or thereabouts at its eastern boundary, and the lower surface of the stratum of the sub-soil is at a level equivalent to -50.8m (minus fifty point eight metres) OD (Ordnance Datum) or thereabout at its western boundary and -50.8m (minus fifty point eight metres) OD (Ordnance Datum) or thereabouts at its eastern boundary.	82 - London Borough of Lewisham	LN131640	
GRECT/2247	22.9 square metres of a stratum of subsoil below flats (Prospect Place) where the upper surface of the stratum of the sub-soil is at a level equivalent to -32.5m (minus thirty two point five metres) OD (Ordnance Datum) or thereabout at its western boundary and -32.4m (minus thirty two point four metres) OD (Ordnance Datum) or thereabouts at its eastern boundary, and the lower surface of the stratum of the sub-soil is at a level equivalent to -50.3m (minus fifty point three metres) OD (Ordnance Datum) or thereabout at its western boundary and -50.3m (minus fifty point three metres) OD (Ordnance Datum) or thereabouts at its eastern boundary.	87 - London Borough of Lewisham	SGL426500	
GRECT/2248	8.7 square metres of a stratum of subsoil below restaurant and flats (232, Evelyn Street) where the upper surface of the stratum of the sub-soil is at a level equivalent to -32.4m (minus thirty two point four metres) OD (Ordnance Datum) or thereabout at its western boundary and -32.4m (minus thirty two point four metres) OD (Ordnance Datum) or thereabouts at its eastern boundary, and the lower surface of the stratum of the sub-soil is at a level equivalent to -50.3m (minus fifty point three metres) OD (Ordnance Datum) or thereabout at its western boundary and -50.3m (minus fifty point three metres) OD (Ordnance Datum) or thereabouts at its eastern boundary.	88 - London Borough of Lewisham	362783	
GRECT/2249	8.2 square metres of a stratum of subsoil below restaurant and flats (234, Evelyn Street) where the upper surface of the stratum of the sub-soil is at a level equivalent to -32.4m (minus thirty two point four metres) OD (Ordnance Datum) or thereabout at its western boundary and -32.4m (minus thirty two point four metres) OD (Ordnance Datum) or thereabouts at its eastern boundary, and the lower surface of the stratum of the sub-soil is at a level equivalent to -50.3m (minus fifty point three metres) OD (Ordnance Datum) or thereabout at its western boundary and -50.3m (minus fifty point three metres) OD (Ordnance Datum) or thereabouts at its eastern boundary.	89 - London Borough of Lewisham	372571	
GRECT/2250	1.8 square metres of a stratum of subsoil below public road, central reservation and footways (Grove Street, B206) where the upper surface of the stratum of the sub-soil is at a level equivalent to -32.4m (minus thirty two point four metres) OD (Ordnance Datum) or thereabout at its western boundary and -32.4m (minus thirty two point four metres) OD (Ordnance Datum) or thereabouts at its eastern boundary, and the lower surface of the stratum of the sub-soil is at a level equivalent to -50.2m (minus fifty point two metres) OD (Ordnance Datum) or thereabout at its western boundary and -50.2m (minus fifty point two metres) OD (Ordnance Datum) or thereabouts at its eastern boundary.	90 - London Borough of Lewisham	Unregistered	

GRECT/2251	0.1 square metres of a stratum of subsoil below shop (299, Evelyn Street) where the upper surface of the stratum of the sub-soil is at a level equivalent to -32.4m (minus thirty two point four metres) OD (Ordnance Datum) or thereabout at its western boundary and -32.4m (minus thirty two point four metres) OD (Ordnance Datum) or thereabouts at its eastern boundary, and the lower surface of the stratum of the sub-soil is at a level equivalent to -50.2m (minus fifty point two metres) OD (Ordnance Datum) or thereabout at its western boundary and -50.2m (minus fifty point two metres) OD (Ordnance Datum) or thereabouts at its eastern boundary.	92 - London Borough of Lewisham	LN203344, TGL340680	
GRECT/2252	1.7 square metres of a stratum of subsoil below hardstanding (299, Evelyn Street) where the upper surface of the stratum of the sub-soil is at a level equivalent to -32.4m (minus thirty two point four metres) OD (Ordnance Datum) or thereabout at its western boundary and -32.3m (minus thirty two point three metres) OD (Ordnance Datum) or thereabouts at its eastern boundary, and the lower surface of the stratum of the sub-soil is at a level equivalent to -50.2m (minus fifty point two metres) OD (Ordnance Datum) or thereabout at its western boundary and -50.2m (minus fifty point two metres) OD (Ordnance Datum) or thereabouts at its eastern boundary.	93 - London Borough of Lewisham	LN203344, TGL340680	
GRECT/2253	192.1 square metres of a stratum of subsoil below public footway (Evelyn Street, A200) where the upper surface of the stratum of the sub-soil is at a level equivalent to -32.4m (minus thirty two point four metres) OD (Ordnance Datum) or thereabout at its western boundary and -32.2m (minus thirty two point two metres) OD (Ordnance Datum) or thereabouts at its eastern boundary, and the lower surface of the stratum of the sub-soil is at a level equivalent to -50.3m (minus fifty point three metres) OD (Ordnance Datum) or thereabout at its western boundary and -50m (minus fifty metres) OD (Ordnance Datum) or thereabouts at its eastern boundary.	91 - London Borough of Lewisham	TGL195269	
GRECT/2254	7.7 square metres of a stratum of subsoil below public road and footways (Prince Street) where the upper surface of the stratum of the sub-soil is at a level equivalent to -32.1m (minus thirty two point one metres) OD (Ordnance Datum) or thereabout at its western boundary and -32.1m (minus thirty two point one metres) OD (Ordnance Datum) or thereabouts at its eastern boundary, and the lower surface of the stratum of the sub-soil is at a level equivalent to -50m (minus fifty metres) OD (Ordnance Datum) or thereabout at its western boundary and -50m (minus fifty metres) OD (Ordnance Datum) or thereabouts at its eastern boundary.	98 - London Borough of Lewisham	Unregistered	
GRECT/2255	29.9 square metres of a stratum of subsoil below shop and flats (321, Evelyn Street) where the upper surface of the stratum of the sub-soil is at a level equivalent to -32.1m (minus thirty two point one metres) OD (Ordnance Datum) or thereabout at its western boundary and -32.1m (minus thirty two point one metres) OD (Ordnance Datum) or thereabouts at its eastern boundary, and the lower surface of the stratum of the sub-soil is at a level equivalent to -50m (minus fifty metres) OD (Ordnance Datum) or thereabout at its western boundary and -50m (minus fifty metres) OD (Ordnance Datum) or thereabouts at its eastern boundary.	99 - London Borough of Lewisham	LN225981	
GRECT/2256	3.8 square metres of a stratum of subsoil below hardstanding (321, Evelyn Street) where the upper surface of the stratum of the sub-soil is at a level equivalent to -	100 - London Borough of Lewisham	LN225981	

	32.1m (minus thirty two point one metres) OD (Ordnance Datum) or thereabout at its western boundary and -32.1m (minus thirty two point one metres) OD (Ordnance Datum) or thereabouts at its eastern boundary, and the lower surface of the stratum of the sub-soil is at a level equivalent to -49.9m (minus forty nine point nine metres) OD (Ordnance Datum) or thereabout at its western boundary and -49.9m (minus forty nine point nine metres) OD (Ordnance Datum) or thereabouts at its eastern boundary.			
GRECT/2257	69.6 square metres of a stratum of subsoil below grassed area and hardstanding (off Evelyn Road) where the upper surface of the stratum of the sub-soil is at a level equivalent to -32.1m (minus thirty two point one metres) OD (Ordnance Datum) or thereabout at its western boundary and -32.8m (minus thirty two point eight metres) OD (Ordnance Datum) or thereabouts at its eastern boundary, and the lower surface of the stratum of the sub-soil is at a level equivalent to -49.9m (minus forty nine point nine metres) OD (Ordnance Datum) or thereabout at its western boundary and -49.7m (minus forty nine point seven metres) OD (Ordnance Datum) or thereabouts at its eastern boundary.	101 - London Borough of Lewisham	TGL191661	
GRECT/2258	4667.9 square metres of a stratum of subsoil below public road and footways (Evelyn Street, A200) where the upper surface of the stratum of the sub-soil is at a level equivalent to -32.2m (minus thirty two point two metres) OD (Ordnance Datum) or thereabout at its western boundary and -31.6m (minus thirty one point six metres) OD (Ordnance Datum) or thereabouts at its eastern boundary, and the lower surface of the stratum of the sub-soil is at a level equivalent to -50.1m (minus fifty point one metres) OD (Ordnance Datum) or thereabout at its western boundary and -49.4m (minus forty nine point four metres) OD (Ordnance Datum) or thereabouts at its eastern boundary.	95 - London Borough of Lewisham	Unregistered	
GRECT/2259	525.9 square metres of a stratum of subsoil below flats, gardens (The Drakes) footway and cycle way (off Evelyn Street) where the upper surface of the stratum of the sub-soil is at a level equivalent to -31.7m (minus thirty one point seven metres) OD (Ordnance Datum) or thereabout at its western boundary and -31.6m (minus thirty one point six metres) OD (Ordnance Datum) or thereabouts at its eastern boundary, and the lower surface of the stratum of the sub-soil is at a level equivalent to -49.6m (minus forty nine point six metres) OD (Ordnance Datum) or thereabout at its western boundary and -49.4m (minus forty nine point four metres) OD (Ordnance Datum) or thereabouts at its eastern boundary.	102 - London Borough of Lewisham	TGL309056, TGL18040	
GRECT/2260	25.2 square metres of a stratum of subsoil below public footway and cycleway (off Evelyn Street) where the upper surface of the stratum of the sub-soil is at a level equivalent to -31.6m (minus thirty one point six metres) OD (Ordnance Datum) or thereabout at its western boundary and -31.5m (minus thirty one point five metres) OD (Ordnance Datum) or thereabouts at its eastern boundary, and the lower surface of the stratum of the sub-soil is at a level equivalent to -49.4m (minus forty nine point four metres) OD (Ordnance Datum) or thereabout at its western boundary and -49.4m (minus forty nine point four metres) OD (Ordnance Datum) or thereabouts at its eastern boundary.	104 - London Borough of Lewisham	Unregistered	

GRECT/2261	550.6 square metres of a stratum of subsoil below Akwaaba Community Centre, Grinling Place where the upper surface of the stratum of the sub-soil is at a level equivalent to -31.6m (minus thirty one point six metres) OD (Ordnance Datum) or thereabout at its western boundary and -31.4m (minus thirty one point four metres) OD (Ordnance Datum) or thereabouts at its eastern boundary, and the lower surface of the stratum of the sub-soil is at a level equivalent to -49.4m (minus forty nine point four metres) OD (Ordnance Datum) or thereabout at its western boundary and -49.3m (minus forty nine point three metres) OD (Ordnance Datum) or thereabouts at its eastern boundary.	105 - London Borough of Lewisham	TGL19059	
GRECT/2262	152.3 square metres of a stratum of subsoil below shop, storage, yard and flats (227, Deptford High Street), car wash, hardstanding (404, Evelyn Street) where the upper surface of the stratum of the sub-soil is at a level equivalent to -31.5m (minus thirty one point five metres) OD (Ordnance Datum) or thereabout at its western boundary and -31.5m (minus thirty one point five metres) OD (Ordnance Datum) or thereabouts at its eastern boundary, and the lower surface of the stratum of the sub-soil is at a level equivalent to -49.4m (minus forty nine point four metres) OD (Ordnance Datum) or thereabout at its western boundary and -49.3m (minus forty nine point three metres) OD (Ordnance Datum) or thereabouts at its eastern boundary.	106 - London Borough of Lewisham	LN91375	
GRECT/2263	169.7 square metres of a stratum of subsoil below car park and footways (off Grinling Place) where the upper surface of the stratum of the sub-soil is at a level equivalent to -31.5m (minus thirty one point five metres) OD (Ordnance Datum) or thereabout at its western boundary and -31.4m (minus thirty one point four metres) OD (Ordnance Datum) or thereabouts at its eastern boundary, and the lower surface of the stratum of the sub-soil is at a level equivalent to -49.3m (minus forty nine point three metres) OD (Ordnance Datum) or thereabout at its western boundary and -49.3m (minus forty nine point three metres) OD (Ordnance Datum) or thereabouts at its eastern boundary.	107 - London Borough of Lewisham	TGL79089	
GRECT/2264	66.7 square metres of a stratum of subsoil below gardens and hardstanding (6 to 12, Edward Street) where the upper surface of the stratum of the sub-soil is at a level equivalent to -31.4m (minus thirty one point four metres) OD (Ordnance Datum) or thereabout at its western boundary and -31.4m (minus thirty one point four metres) OD (Ordnance Datum) or thereabouts at its eastern boundary, and the lower surface of the stratum of the sub-soil is at a level equivalent to -49.3m (minus forty nine point three metres) OD (Ordnance Datum) or thereabout at its western boundary and -49.3m (minus forty nine point three metres) OD (Ordnance Datum) or thereabouts at its eastern boundary.	108 - London Borough of Lewisham	TGL97118	
GRECT/2265	138.9 square metres of a stratum of subsoil below public house, restaurant and flats (217 to 219, Deptford High Street) where the upper surface of the stratum of the sub-soil is at a level equivalent to -31.4m (minus thirty one point four metres) OD (Ordnance Datum) or thereabout at its western boundary and -31.4m (minus thirty one point four metres) OD (Ordnance Datum) or thereabouts at its eastern boundary, and the lower surface of the stratum of the sub-soil is at a level equivalent to -49.3m (minus forty nine point three metres) OD (Ordnance Datum) or	109 - London Borough of Lewisham	TGL137257	

	thereabout at its western boundary and -49.3m (minus forty nine point three metres) OD (Ordnance Datum) or thereabouts at its eastern boundary.			
GRECT/2266	73.3 square metres of a stratum of subsoil below houses (2 to 4, Edward Street) where the upper surface of the stratum of the sub-soil is at a level equivalent to -31.4m (minus thirty one point four metres) OD (Ordnance Datum) or thereabout at its western boundary and -31.4m (minus thirty one point four metres) OD (Ordnance Datum) or thereabouts at its eastern boundary, and the lower surface of the stratum of the sub-soil is at a level equivalent to -49.3m (minus forty nine point three metres) OD (Ordnance Datum) or thereabout at its western boundary and -49.3m (minus forty nine point three metres) OD (Ordnance Datum) or thereabouts at its eastern boundary.	110 - London Borough of Lewisham	TGL79089	
GRECT/2267	232.2 square metres of a stratum of subsoil below public road and footways (Edward Street, B207) where the upper surface of the stratum of the sub-soil is at a level equivalent to -31.4m (minus thirty one point four metres) OD (Ordnance Datum) or thereabout at its western boundary and -31.4m (minus thirty one point four metres) OD (Ordnance Datum) or thereabouts at its eastern boundary, and the lower surface of the stratum of the sub-soil is at a level equivalent to -49.3m (minus forty nine point three metres) OD (Ordnance Datum) or thereabout at its western boundary and -49.2m (minus forty nine point two metres) OD (Ordnance Datum) or thereabouts at its eastern boundary.	111 - London Borough of Lewisham	Unregistered	
GRECT/2268	42.3 square metres of a stratum of subsoil below shop and flats (215, Deptford High Street) where the upper surface of the stratum of the sub-soil is at a level equivalent to -31.4m (minus thirty one point four metres) OD (Ordnance Datum) or thereabout at its western boundary and -31.4m (minus thirty one point four metres) OD (Ordnance Datum) or thereabouts at its eastern boundary, and the lower surface of the stratum of the sub-soil is at a level equivalent to -49.2m (minus forty nine point two metres) OD (Ordnance Datum) or thereabout at its western boundary and -49.2m (minus forty nine point two metres) OD (Ordnance Datum) or thereabouts at its eastern boundary.	114 - London Borough of Lewisham	331452	
GRECT/2269	69.4 square metres of a stratum of subsoil below shops and flats (1a, 1b, 1c and 1d, Edward Street) where the upper surface of the stratum of the sub-soil is at a level equivalent to -31.4m (minus thirty one point four metres) OD (Ordnance Datum) or thereabout at its western boundary and -31.4m (minus thirty one point four metres) OD (Ordnance Datum) or thereabouts at its eastern boundary, and the lower surface of the stratum of the sub-soil is at a level equivalent to -49.3m (minus forty nine point three metres) OD (Ordnance Datum) or thereabout at its western boundary and -49.2m (minus forty nine point two metres) OD (Ordnance Datum) or thereabouts at its eastern boundary.	112 - London Borough of Lewisham	TGL306171	
GRECT/2270	89.4 square metres of a stratum of subsoil below shop, flats and garden (213, Deptford High Street) where the upper surface of the stratum of the sub-soil is at a level equivalent to -31.4m (minus thirty one point four metres) OD (Ordnance Datum) or thereabout at its western boundary and -31.4m (minus thirty one point four metres) OD (Ordnance Datum) or thereabouts at its eastern boundary, and the lower surface of the stratum of the sub-soil is at a level equivalent to -49.2m (minus forty nine	115 - London Borough of Lewisham	SGL230818	

	point two metres) OD (Ordnance Datum) or thereabout at its western boundary and -49.2m (minus forty nine point two metres) OD (Ordnance Datum) or thereabouts at its eastern boundary.			
GRECT/2272	91 square metres of a stratum of subsoil below shop, flats and garden (209, Deptford High Street) where the upper surface of the stratum of the sub-soil is at a level equivalent to -31.4m (minus thirty one point four metres) OD (Ordnance Datum) or thereabout at its western boundary and -31.3m (minus thirty one point three metres) OD (Ordnance Datum) or thereabouts at its eastern boundary, and the lower surface of the stratum of the sub-soil is at a level equivalent to -49.2m (minus forty nine point two metres) OD (Ordnance Datum) or thereabout at its western boundary and -49.2m (minus forty nine point two metres) OD (Ordnance Datum) or thereabouts at its eastern boundary.	117 - London Borough of Lewisham	TGL458011, 136999	
GRECT/2296	0.2 square metres of a stratum of subsoil below hardstanding and shrubbery (St Paul's Church) where the upper surface of the stratum of the sub-soil is at a level equivalent to -31.1m (minus thirty one point one metres) OD (Ordnance Datum) or thereabout at its western boundary and -31.1m (minus thirty one point one metres) OD (Ordnance Datum) or thereabouts at its eastern boundary, and the lower surface of the stratum of the sub-soil is at a level equivalent to -49m (minus forty nine metres) OD (Ordnance Datum) or thereabout at its western boundary and -49m (minus forty nine metres) OD (Ordnance Datum) or thereabouts at its eastern boundary.	146 - London Borough of Lewisham	Unregistered	
GRECT/2297	659.5 square metres of a stratum of subsoil below graveyard, gardens and footpath (St Paul's Church) where the upper surface of the stratum of the sub-soil is at a level equivalent to -31m (minus thirty one metres) OD (Ordnance Datum) or thereabout at its western boundary and -31.1m (minus thirty one point one metres) OD (Ordnance Datum) or thereabouts at its eastern boundary, and the lower surface of the stratum of the sub-soil is at a level equivalent to -48.9m (minus forty eight point nine metres) OD (Ordnance Datum) or thereabout at its western boundary and -49m (minus forty nine metres) OD (Ordnance Datum) or thereabouts at its eastern boundary.	147 - London Borough of Lewisham	TGL401108	
GRECT/2298	34 square metres of a stratum of subsoil below verge (Crossfield Street and Coffey Street) where the upper surface of the stratum of the sub-soil is at a level equivalent to -31.1m (minus thirty one point one metres) OD (Ordnance Datum) or thereabout at its western boundary and -31m (minus thirty one metres) OD (Ordnance Datum) or thereabouts at its eastern boundary, and the lower surface of the stratum of the sub-soil is at a level equivalent to -48.9m (minus forty eight point nine metres) OD (Ordnance Datum) or thereabout at its western boundary and -48.9m (minus forty eight point nine metres) OD (Ordnance Datum) or thereabouts at its eastern boundary.	148 - London Borough of Lewisham	SGL55204	
GRECT/2299	115.8 square metres of a stratum of subsoil below public road, traffic island and footways (Crossfield Street) where the upper surface of the stratum of the sub-soil is at a level equivalent to -31.1m (minus thirty one point one metres) OD (Ordnance Datum) or thereabout at its western boundary and -31m (minus thirty one metres) OD (Ordnance Datum) or thereabouts at its eastern boundary, and the lower surface of the stratum of the sub-soil is at a level equivalent to -48.9m (minus forty eight point nine	149 - London Borough of Lewisham	SGL55204	



	metres) OD (Ordnance Datum) or thereabout at its western boundary and -48.9m (minus forty eight point nine metres) OD (Ordnance Datum) or thereabouts at its eastern boundary.			
GRECT/2300	390.4 square metres of a stratum of subsoil below public road, traffic island and footways (Crossfield Street) where the upper surface of the stratum of the sub-soil is at a level equivalent to -31m (minus thirty one metres) OD (Ordnance Datum) or thereabout at its western boundary and -31.1m (minus thirty one point one metres) OD (Ordnance Datum) or thereabouts at its eastern boundary, and the lower surface of the stratum of the sub-soil is at a level equivalent to -48.9m (minus forty eight point nine metres) OD (Ordnance Datum) or thereabout at its western boundary and -48.7m (minus forty eight point seven metres) OD (Ordnance Datum) or thereabouts at its eastern boundary.	150 - London Borough of Lewisham	TGL166724	
GRECT/2301	0.1 square metres of a stratum of subsoil below gardens (St Paul's Church) where the upper surface of the stratum of the sub-soil is at a level equivalent to -30.9m (minus thirty point nine metres) OD (Ordnance Datum) or thereabout at its western boundary and -30.9m (minus thirty point nine metres) OD (Ordnance Datum) or thereabouts at its eastern boundary, and the lower surface of the stratum of the sub-soil is at a level equivalent to -48.8m (minus forty eight point eight metres) OD (Ordnance Datum) or thereabout at its western boundary and -48.8m (minus forty eight point eight metres) OD (Ordnance Datum) or thereabouts at its eastern boundary.	147 - London Borough of Lewisham	TGL401108	
GRECT/2302	22.7 square metres of a stratum of subsoil below verge (Coffey Street) where the upper surface of the stratum of the sub-soil is at a level equivalent to -30.9m (minus thirty point nine metres) OD (Ordnance Datum) or thereabout at its western boundary and -30.9m (minus thirty point nine metres) OD (Ordnance Datum) or thereabouts at its eastern boundary, and the lower surface of the stratum of the sub-soil is at a level equivalent to -48.8m (minus forty eight point eight metres) OD (Ordnance Datum) or thereabout at its western boundary and -48.8m (minus forty eight point eight metres) OD (Ordnance Datum) or thereabouts at its eastern boundary.	148 - London Borough of Lewisham	SGL164777	
GRECT/2303	49.7 square metres of a stratum of subsoil below public road, central reservation and footway (Deptford Church Street, A2209) where the upper surface of the stratum of the sub-soil is at a level equivalent to -30.7m (minus thirty point seven metres) OD (Ordnance Datum) or thereabout at its western boundary and -30.7m (minus thirty point seven metres) OD (Ordnance Datum) or thereabouts at its eastern boundary, and the lower surface of the stratum of the sub-soil is at a level equivalent to -48.5m (minus forty eight point five metres) OD (Ordnance Datum) or thereabout at its western boundary and -48.5m (minus forty eight point five metres) OD (Ordnance Datum) or thereabouts at its eastern boundary.	177 - London Borough of Lewisham	Unregistered	
GRECT/2304	19.6 square metres of a stratum of subsoil below public footway (Deptford Church Street, A2209) where the upper surface of the stratum of the sub-soil is at a level equivalent to -30.6m (minus thirty point six metres) OD (Ordnance Datum) or thereabout at its western boundary and -30.6m (minus thirty point six metres) OD (Ordnance Datum) or thereabouts at its eastern boundary, and the lower surface of the stratum of the sub-soil is at a level equivalent to -48.5m (minus forty eight point five metres)	183 - London Borough of Lewisham	137730	

	OD (Ordnance Datum) or thereabout at its western boundary and -48.5m (minus forty eight point five metres) OD (Ordnance Datum) or thereabouts at its eastern boundary.			
GRECT/2305	21.8 square metres of a stratum of subsoil below access and hardstanding (Farrer House) where the upper surface of the stratum of the sub-soil is at a level equivalent to -30.7m (minus thirty point seven metres) OD (Ordnance Datum) or thereabout at its western boundary and -30.6m (minus thirty point six metres) OD (Ordnance Datum) or thereabouts at its eastern boundary, and the lower surface of the stratum of the sub-soil is at a level equivalent to -48.5m (minus forty eight point five metres) OD (Ordnance Datum) or thereabout at its western boundary and -48.5m (minus forty eight point five metres) OD (Ordnance Datum) or thereabouts at its eastern boundary.	185 - London Borough of Lewisham	Unregistered	
GRECT/2306	3.1 square metres of a stratum of subsoil below flats (Farrer House) where the upper surface of the stratum of the sub-soil is at a level equivalent to -30.6m (minus thirty point six metres) OD (Ordnance Datum) or thereabout at its western boundary and -30.6m (minus thirty point six metres) OD (Ordnance Datum) or thereabouts at its eastern boundary, and the lower surface of the stratum of the sub-soil is at a level equivalent to -48.4m (minus forty eight point four metres) OD (Ordnance Datum) or thereabout at its western boundary and -48.4m (minus forty eight point four metres) OD (Ordnance Datum) or thereabouts at its eastern boundary.	188 - London Borough of Lewisham	LN12772	
GRECT/2307	839.7 square metres of a stratum of subsoil below gardens, play area and hardstanding (Farrer House) where the upper surface of the stratum of the sub-soil is at a level equivalent to -30.6m (minus thirty point six metres) OD (Ordnance Datum) or thereabout at its western boundary and -30.5m (minus thirty point five metres) OD (Ordnance Datum) or thereabouts at its eastern boundary, and the lower surface of the stratum of the sub-soil is at a level equivalent to -48.5m (minus forty eight point five metres) OD (Ordnance Datum) or thereabout at its western boundary and -48.4m (minus forty eight point four metres) OD (Ordnance Datum) or thereabouts at its eastern boundary.	186 - London Borough of Lewisham	LN12772	
GRECT/2309	107.4 square metres of a stratum of subsoil below public road and footways (Creekside) where the upper surface of the stratum of the sub-soil is at a level equivalent to -30.4m (minus thirty point four metres) OD (Ordnance Datum) or thereabout at its western boundary and -30.4m (minus thirty point four metres) OD (Ordnance Datum) or thereabouts at its eastern boundary, and the lower surface of the stratum of the sub-soil is at a level equivalent to -48.2m (minus forty eight point two metres) OD (Ordnance Datum) or thereabout at its western boundary and -48.2m (minus forty eight point two metres) OD (Ordnance Datum) or thereabouts at its eastern boundary.	189 - London Borough of Lewisham	Unregistered	
GRECT/2310	18 square metres of a stratum of subsoil below bridge (BR525 NKL) carrying railway and works (Deptford and Greenwich) over public road and footways (Creekside) where the upper surface of the stratum of the sub-soil is at a level equivalent to -30.4m (minus thirty point four metres) OD (Ordnance Datum) or thereabout at its western boundary and -30.4m (minus thirty point four metres) OD (Ordnance Datum) or thereabouts at its eastern boundary, and the lower surface of the stratum of the sub-soil is at a level equivalent to -48.2m (minus forty eight point two	190 - London Borough of Lewisham	Unregistered	Network Rail Infrastructure Limited

	metres) OD (Ordnance Datum) or thereabout at its western boundary and -48.2m (minus forty eight point two metres) OD (Ordnance Datum) or thereabouts at its eastern boundary.			
GRECT/2311	154.3 square metres of a stratum of subsoil below arts centre (Drake House, 18 to 22 Creekside) where the upper surface of the stratum of the sub-soil is at a level equivalent to -30.4m (minus thirty point four metres) OD (Ordnance Datum) or thereabout at its western boundary and -30.3m (minus thirty point three metres) OD (Ordnance Datum) or thereabouts at its eastern boundary, and the lower surface of the stratum of the sub-soil is at a level equivalent to -48.2m (minus forty eight point two metres) OD (Ordnance Datum) or thereabout at its western boundary and -48.2m (minus forty eight point two metres) OD (Ordnance Datum) or thereabouts at its eastern boundary.	191 - London Borough of Lewisham	SGL361373	
GRECT/2312	1 square metre of a stratum of subsoil below hardstanding (Sun Wharf) where the upper surface of the stratum of the sub-soil is at a level equivalent to -30.3m (minus thirty point three metres) OD (Ordnance Datum) or thereabout at its western boundary and -30.3m (minus thirty point three metres) OD (Ordnance Datum) or thereabouts at its eastern boundary, and the lower surface of the stratum of the sub-soil is at a level equivalent to -48.2m (minus forty eight point two metres) OD (Ordnance Datum) or thereabout at its western boundary and -48.2m (minus forty eight point two metres) OD (Ordnance Datum) or thereabouts at its eastern boundary.	193 - London Borough of Lewisham	SGL156218	
GRECT/2314	76.2 square metres of a stratum of subsoil below hardstanding and vegetation (Creekside Centre, 14 Creekside) where the upper surface of the stratum of the sub-soil is at a level equivalent to -30.3m (minus thirty point three metres) OD (Ordnance Datum) or thereabout at its western boundary and -30.2m (minus thirty point two metres) OD (Ordnance Datum) or thereabouts at its eastern boundary, and the lower surface of the stratum of the sub-soil is at a level equivalent to -48.1m (minus forty eight point one metres) OD (Ordnance Datum) or thereabout at its western boundary and -48.1m (minus forty eight point one metres) OD (Ordnance Datum) or thereabouts at its eastern boundary.	194 - London Borough of Lewisham	TGL558761, TGL508593	
GRECT/2320	18.6 square metres of a stratum of subsoil below hardstanding (Faircharm Trading Estate, 8 to 12, Creekside) and watercourse (Deptford Creek), and bed thereof where the upper surface of the stratum of the sub-soil is at a level equivalent to -30.2m (minus thirty point two metres) OD (Ordnance Datum) or thereabout at its western boundary and -30.2m (minus thirty point two metres) OD (Ordnance Datum) or thereabouts at its eastern boundary, and the lower surface of the stratum of the sub-soil is at a level equivalent to -48.1m (minus forty eight point one metres) OD (Ordnance Datum) or thereabout at its western boundary and -48.1m (minus forty eight point one metres) OD (Ordnance Datum) or thereabouts at its eastern boundary.	196 - London Borough of Lewisham	TGL520539	
GRECT/2342	1 square metre of a stratum of subsoil below public road, central reservation and footway (Deptford Church Street, A2209) where the upper surface of the stratum of the sub-soil is at a level equivalent to -30.7m (minus thirty point seven metres) OD (Ordnance Datum) or thereabout at its western boundary and -30.7m (minus thirty point seven metres) OD (Ordnance Datum) or thereabouts at its	177 - London Borough of Lewisham	438572	

	eastern boundary, and the lower surface of the stratum of the sub-soil is at a level equivalent to -48.5m (minus forty eight point five metres) OD (Ordnance Datum) or thereabout at its western boundary and -48.5m (minus forty eight point five metres) OD (Ordnance Datum) or thereabouts at its eastern boundary.			
GRECT/2343	33 square metres of a stratum of subsoil below public road, central reservation and footway (Deptford Church Street, A2209) where the upper surface of the stratum of the sub-soil is at a level equivalent to -30.7m (minus thirty point seven metres) OD (Ordnance Datum) or thereabout at its western boundary and -30.7m (minus thirty point seven metres) OD (Ordnance Datum) or thereabouts at its eastern boundary, and the lower surface of the stratum of the sub-soil is at a level equivalent to -48.5m (minus forty eight point five metres) OD (Ordnance Datum) or thereabout at its western boundary and -48.5m (minus forty eight point five metres) OD (Ordnance Datum) or thereabouts at its eastern boundary.	177 - London Borough of Lewisham	112214	
GRECT/2344	45.2 square metres of a stratum of subsoil below public road, central reservation and footway (Deptford Church Street, A2209) where the upper surface of the stratum of the sub-soil is at a level equivalent to -30.7m (minus thirty point seven metres) OD (Ordnance Datum) or thereabout at its western boundary and -30.6m (minus thirty point six metres) OD (Ordnance Datum) or thereabouts at its eastern boundary, and the lower surface of the stratum of the sub-soil is at a level equivalent to -48.5m (minus forty eight point five metres) OD (Ordnance Datum) or thereabout at its western boundary and -48.5m (minus forty eight point five metres) OD (Ordnance Datum) or thereabouts at its eastern boundary.	177 - London Borough of Lewisham	137730	
GRECT/2345	14.1 square metres of a stratum of subsoil below public footway (Deptford Church Street, A2209) where the upper surface of the stratum of the sub-soil is at a level equivalent to -30.7m (minus thirty point seven metres) OD (Ordnance Datum) or thereabout at its western boundary and -30.7m (minus thirty point seven metres) OD (Ordnance Datum) or thereabouts at its eastern boundary, and the lower surface of the stratum of the sub-soil is at a level equivalent to -48.5m (minus forty eight point five metres) OD (Ordnance Datum) or thereabout at its western boundary and -48.5m (minus forty eight point five metres) OD (Ordnance Datum) or thereabouts at its eastern boundary.	183 - London Borough of Lewisham	Unregistered	
GRECT/2346	0.1 square metres of a stratum of subsoil below public footway (Deptford Church Street, A2209) where the upper surface of the stratum of the sub-soil is at a level equivalent to -30.6m (minus thirty point six metres) OD (Ordnance Datum) or thereabout at its western boundary and -30.6m (minus thirty point six metres) OD (Ordnance Datum) or thereabouts at its eastern boundary, and the lower surface of the stratum of the sub-soil is at a level equivalent to -48.5m (minus forty eight point five metres) OD (Ordnance Datum) or thereabout at its western boundary and -48.5m (minus forty eight point five metres) OD (Ordnance Datum) or thereabouts at its eastern boundary.	183 - London Borough of Lewisham	137479	
GRECT/2347	5.3 square metres of a stratum of subsoil below public road and footway (Deptford Church Street, A2209) where the upper surface of the stratum of the sub-soil is at a level equivalent to -30.6m (minus thirty point six metres) OD (Ordnance Datum) or thereabout at its western boundary	177 - London Borough of Lewisham	137728	

	and -30.6m (minus thirty point six metres) OD (Ordnance Datum) or thereabouts at its eastern boundary, and the lower surface of the stratum of the sub-soil is at a level equivalent to -48.5m (minus forty eight point five metres) OD (Ordnance Datum) or thereabouts at its western boundary and -48.5m (minus forty eight point five metres) OD (Ordnance Datum) or thereabouts at its eastern boundary.			
GRECT/2348	9.6 square metres of a stratum of subsoil below public footway (Deptford Church Street, A2209) where the upper surface of the stratum of the sub-soil is at a level equivalent to -30.6m (minus thirty point six metres) OD (Ordnance Datum) or thereabouts at its western boundary and -30.6m (minus thirty point six metres) OD (Ordnance Datum) or thereabouts at its eastern boundary, and the lower surface of the stratum of the sub-soil is at a level equivalent to -48.5m (minus forty eight point five metres) OD (Ordnance Datum) or thereabouts at its western boundary and -48.5m (minus forty eight point five metres) OD (Ordnance Datum) or thereabouts at its eastern boundary.	183 - London Borough of Lewisham	137728	
GRECT/2349	12.9 square metres of a stratum of subsoil below public footway (Deptford Church Street, A2209) where the upper surface of the stratum of the sub-soil is at a level equivalent to -30.7m (minus thirty point seven metres) OD (Ordnance Datum) or thereabouts at its western boundary and -30.6m (minus thirty point six metres) OD (Ordnance Datum) or thereabouts at its eastern boundary, and the lower surface of the stratum of the sub-soil is at a level equivalent to -48.5m (minus forty eight point five metres) OD (Ordnance Datum) or thereabouts at its western boundary and -48.5m (minus forty eight point five metres) OD (Ordnance Datum) or thereabouts at its eastern boundary.	183 - London Borough of Lewisham	112214	
GRECT/2350	54 square metres of a stratum of subsoil below development site (Deptford Landings) where the upper surface of the stratum of the sub-soil is at a level equivalent to -33m (minus thirty three metres) OD (Ordnance Datum) or thereabouts at its western boundary and -33m (minus thirty three metres) OD (Ordnance Datum) or thereabouts at its eastern boundary, and the lower surface of the stratum of the sub-soil is at a level equivalent to -50.9m (minus fifty point nine metres) OD (Ordnance Datum) or thereabouts at its western boundary and -50.9m (minus fifty point nine metres) OD (Ordnance Datum) or thereabouts at its eastern boundary.	58 - London Borough of Lewisham	TGL509805	
GRECT/2351	267.4 square metres of a stratum of subsoil below public road, central reservations and footways (Evelyn Street, A200) where the upper surface of the stratum of the sub-soil is at a level equivalent to -33m (minus thirty three metres) OD (Ordnance Datum) or thereabouts at its western boundary and -32.9m (minus thirty two point nine metres) OD (Ordnance Datum) or thereabouts at its eastern boundary, and the lower surface of the stratum of the sub-soil is at a level equivalent to -50.9m (minus fifty point nine metres) OD (Ordnance Datum) or thereabouts at its western boundary and -50.7m (minus fifty point seven metres) OD (Ordnance Datum) or thereabouts at its eastern boundary.	58 - London Borough of Lewisham	SGL407816	
GRECT/2352	801.4 square metres of a stratum of subsoil below public road, central reservations and footways (Evelyn Street, A200) where the upper surface of the stratum of the sub-soil is at a level equivalent to -32.9m (minus thirty two point nine metres) OD (Ordnance Datum) or thereabouts at	58 - London Borough of Lewisham	SGL407816	

	its western boundary and -32.4m (minus thirty two point four metres) OD (Ordnance Datum) or thereabouts at its eastern boundary, and the lower surface of the stratum of the sub-soil is at a level equivalent to -50.7m (minus fifty point seven metres) OD (Ordnance Datum) or thereabout at its western boundary and -50.3m (minus fifty point three metres) OD (Ordnance Datum) or thereabouts at its eastern boundary.			
GRECT/2353	2.6 square metres of a stratum of subsoil below garden (8, Edward Street) where the upper surface of the stratum of the sub-soil is at a level equivalent to -31.4m (minus thirty one point four metres) OD (Ordnance Datum) or thereabout at its western boundary and -31.4m (minus thirty one point four metres) OD (Ordnance Datum) or thereabouts at its eastern boundary, and the lower surface of the stratum of the sub-soil is at a level equivalent to -49.3m (minus forty nine point three metres) OD (Ordnance Datum) or thereabout at its western boundary and -49.3m (minus forty nine point three metres) OD (Ordnance Datum) or thereabouts at its eastern boundary.	110 - London Borough of Lewisham	TGL97118	
GRECT/2354	16 square metres of a stratum of subsoil below houses (2 to 4, Edward Street) where the upper surface of the stratum of the sub-soil is at a level equivalent to -31.4m (minus thirty one point four metres) OD (Ordnance Datum) or thereabout at its western boundary and -31.4m (minus thirty one point four metres) OD (Ordnance Datum) or thereabouts at its eastern boundary, and the lower surface of the stratum of the sub-soil is at a level equivalent to -49.3m (minus forty nine point three metres) OD (Ordnance Datum) or thereabout at its western boundary and -49.3m (minus forty nine point three metres) OD (Ordnance Datum) or thereabouts at its eastern boundary.	110 - London Borough of Lewisham	Unregistered	
GRECT/2355	0.7 square metres of a stratum of subsoil below gardens (Farrer House) where the upper surface of the stratum of the sub-soil is at a level equivalent to -30.6m (minus thirty point six metres) OD (Ordnance Datum) or thereabout at its western boundary and -30.6m (minus thirty point six metres) OD (Ordnance Datum) or thereabouts at its eastern boundary, and the lower surface of the stratum of the sub-soil is at a level equivalent to -48.5m (minus forty eight point five metres) OD (Ordnance Datum) or thereabout at its western boundary and -48.5m (minus forty eight point five metres) OD (Ordnance Datum) or thereabouts at its eastern boundary.	186 - London Borough of Lewisham	137479	
GRECT/2356	2.7 square metres of a stratum of subsoil below gardens (Farrer House) where the upper surface of the stratum of the sub-soil is at a level equivalent to -30.6m (minus thirty point six metres) OD (Ordnance Datum) or thereabout at its western boundary and -30.6m (minus thirty point six metres) OD (Ordnance Datum) or thereabouts at its eastern boundary, and the lower surface of the stratum of the sub-soil is at a level equivalent to -48.5m (minus forty eight point five metres) OD (Ordnance Datum) or thereabout at its western boundary and -48.5m (minus forty eight point five metres) OD (Ordnance Datum) or thereabouts at its eastern boundary.	186 - London Borough of Lewisham	137479	
GRECT/2357	23.4 square metres of a stratum of subsoil below gardens and hardstanding (Farrer House) where the upper surface of the stratum of the sub-soil is at a level equivalent to -30.6m (minus thirty point six metres) OD (Ordnance Datum) or thereabout at its western boundary and -30.6m (minus thirty point six metres) OD (Ordnance Datum) or thereabouts at its eastern boundary, and the lower surface	186 - London Borough of Lewisham	137728	

	of the stratum of the sub-soil is at a level equivalent to -48.5m (minus forty eight point five metres) OD (Ordnance Datum) or thereabout at its western boundary and -48.5m (minus forty eight point five metres) OD (Ordnance Datum) or thereabouts at its eastern boundary.			
GRECT/2358	47.1 square metres of a stratum of subsoil below gardens and hardstanding (Farrer House) where the upper surface of the stratum of the sub-soil is at a level equivalent to -30.6m (minus thirty point six metres) OD (Ordnance Datum) or thereabout at its western boundary and -30.6m (minus thirty point six metres) OD (Ordnance Datum) or thereabouts at its eastern boundary, and the lower surface of the stratum of the sub-soil is at a level equivalent to -48.5m (minus forty eight point five metres) OD (Ordnance Datum) or thereabout at its western boundary and -48.5m (minus forty eight point five metres) OD (Ordnance Datum) or thereabouts at its eastern boundary.	186 - London Borough of Lewisham	137730	
GRECT/2359	33.4 square metres of a stratum of subsoil below gardens (Farrer House) where the upper surface of the stratum of the sub-soil is at a level equivalent to -30.6m (minus thirty point six metres) OD (Ordnance Datum) or thereabout at its western boundary and -30.6m (minus thirty point six metres) OD (Ordnance Datum) or thereabouts at its eastern boundary, and the lower surface of the stratum of the sub-soil is at a level equivalent to -48.5m (minus forty eight point five metres) OD (Ordnance Datum) or thereabout at its western boundary and -48.5m (minus forty eight point five metres) OD (Ordnance Datum) or thereabouts at its eastern boundary.	186 - London Borough of Lewisham	112214	
GRECT/2360	74.6 square metres of a stratum of subsoil below gardens (Farrer House) where the upper surface of the stratum of the sub-soil is at a level equivalent to -30.6m (minus thirty point six metres) OD (Ordnance Datum) or thereabout at its western boundary and -30.6m (minus thirty point six metres) OD (Ordnance Datum) or thereabouts at its eastern boundary, and the lower surface of the stratum of the sub-soil is at a level equivalent to -48.5m (minus forty eight point five metres) OD (Ordnance Datum) or thereabout at its western boundary and -48.5m (minus forty eight point five metres) OD (Ordnance Datum) or thereabouts at its eastern boundary.	186 - London Borough of Lewisham	Unregistered	
GRECT/2361	208.1 square metres of a stratum of subsoil below gardens (Farrer House) where the upper surface of the stratum of the sub-soil is at a level equivalent to -30.5m (minus thirty point five metres) OD (Ordnance Datum) or thereabout at its western boundary and -30.5m (minus thirty point five metres) OD (Ordnance Datum) or thereabouts at its eastern boundary, and the lower surface of the stratum of the sub-soil is at a level equivalent to -48.3m (minus forty eight point three metres) OD (Ordnance Datum) or thereabout at its western boundary and -48.4m (minus forty eight point four metres) OD (Ordnance Datum) or thereabouts at its eastern boundary.	186 - London Borough of Lewisham	309070	
GRECT/2362	458.3 square metres of a stratum of subsoil below gardens (Farrer House) where the upper surface of the stratum of the sub-soil is at a level equivalent to -30.5m (minus thirty point five metres) OD (Ordnance Datum) or thereabout at its western boundary and -30.5m (minus thirty point five metres) OD (Ordnance Datum) or thereabouts at its eastern boundary, and the lower surface of the stratum of the sub-soil is at a level equivalent to -48.4m (minus forty eight point four metres) OD (Ordnance Datum) or thereabout at its western boundary and -48.3m (minus	186 - London Borough of Lewisham	LN12772	

	forty eight point three metres) OD (Ordnance Datum) or thereabouts at its eastern boundary.			
GRECT/2363	70.7 square metres of a stratum of subsoil below footway and cycle way (off Evelyn Street) where the upper surface of the stratum of the sub-soil is at a level equivalent to -31.7m (minus thirty one point seven metres) OD (Ordnance Datum) or thereabout at its western boundary and -31.6m (minus thirty one point six metres) OD (Ordnance Datum) or thereabouts at its eastern boundary, and the lower surface of the stratum of the sub-soil is at a level equivalent to -49.6m (minus forty nine point six metres) OD (Ordnance Datum) or thereabout at its western boundary and -49.4m (minus forty nine point four metres) OD (Ordnance Datum) or thereabouts at its eastern boundary.	95 - London Borough of Lewisham	TGL18040	
GRECT/2364	2.5 square metres of a stratum of subsoil below footway and cycle way (off Evelyn Street) where the upper surface of the stratum of the sub-soil is at a level equivalent to -31.7m (minus thirty one point seven metres) OD (Ordnance Datum) or thereabout at its western boundary and -31.7m (minus thirty one point seven metres) OD (Ordnance Datum) or thereabouts at its eastern boundary, and the lower surface of the stratum of the sub-soil is at a level equivalent to -49.5m (minus forty nine point five metres) OD (Ordnance Datum) or thereabout at its western boundary and -49.5m (minus forty nine point five metres) OD (Ordnance Datum) or thereabouts at its eastern boundary.	95 - London Borough of Lewisham	TGL18040	
GRECT/2365	50.4 square metres of a stratum of subsoil below garden and hardstanding (Howard House, Evelyn Street) where the upper surface of the stratum of the sub-soil is at a level equivalent to -31.8m (minus thirty one point eight metres) OD (Ordnance Datum) or thereabout at its western boundary and -31.7m (minus thirty one point seven metres) OD (Ordnance Datum) or thereabouts at its eastern boundary, and the lower surface of the stratum of the sub-soil is at a level equivalent to -49.6m (minus forty nine point six metres) OD (Ordnance Datum) or thereabout at its western boundary and -49.6m (minus forty nine point six metres) OD (Ordnance Datum) or thereabouts at its eastern boundary.	95 - London Borough of Lewisham	179828	
GRECT/2366	54.9 square metres of a stratum of subsoil below garden (Evelyn Street, A200) where the upper surface of the stratum of the sub-soil is at a level equivalent to -32.1m (minus thirty two point one metres) OD (Ordnance Datum) or thereabout at its western boundary and -32m (minus thirty two metres) OD (Ordnance Datum) or thereabouts at its eastern boundary, and the lower surface of the stratum of the sub-soil is at a level equivalent to -50m (minus fifty metres) OD (Ordnance Datum) or thereabout at its western boundary and -49.9m (minus forty nine point nine metres) OD (Ordnance Datum) or thereabouts at its eastern boundary.	95 - London Borough of Lewisham	LN229294	
GRECT/2367	33.7 square metres of a stratum of subsoil below garden and hardstanding (Howard House, Evelyn Street) where the upper surface of the stratum of the sub-soil is at a level equivalent to -31.9m (minus thirty one point nine metres) OD (Ordnance Datum) or thereabout at its western boundary and -31.8m (minus thirty one point eight metres) OD (Ordnance Datum) or thereabouts at its eastern boundary, and the lower surface of the stratum of the sub-soil is at a level equivalent to -49.8m (minus forty nine point eight metres) OD (Ordnance Datum) or thereabout at	95 - London Borough of Lewisham	LN229294	



	its western boundary and -49.6m (minus forty nine point six metres) OD (Ordnance Datum) or thereabouts at its eastern boundary.			
GRECT/2368	15.7 square metres of a stratum of subsoil below public footways (Lavender Court, Evelyn Street, A200) where the upper surface of the stratum of the sub-soil is at a level equivalent to -32.1m (minus thirty two point one metres) OD (Ordnance Datum) or thereabout at its western boundary and -32.1m (minus thirty two point one metres) OD (Ordnance Datum) or thereabouts at its eastern boundary, and the lower surface of the stratum of the sub-soil is at a level equivalent to -50m (minus fifty metres) OD (Ordnance Datum) or thereabout at its western boundary and -50m (minus fifty metres) OD (Ordnance Datum) or thereabouts at its eastern boundary.	95 - London Borough of Lewisham	LN229294	
GRECT/2369	29.9 square metres of a stratum of subsoil below public road and footways (Evelyn Street, A200) where the upper surface of the stratum of the sub-soil is at a level equivalent to -32.2m (minus thirty two point two metres) OD (Ordnance Datum) or thereabout at its western boundary and -32.2m (minus thirty two point two metres) OD (Ordnance Datum) or thereabouts at its eastern boundary, and the lower surface of the stratum of the sub-soil is at a level equivalent to -50.1m (minus fifty point one metres) OD (Ordnance Datum) or thereabout at its western boundary and -50m (minus fifty metres) OD (Ordnance Datum) or thereabouts at its eastern boundary.	95 - London Borough of Lewisham	TGL195269	
GRECT/2370	8 square metres of a stratum of subsoil below public road and footways (Evelyn Street, A200) where the upper surface of the stratum of the sub-soil is at a level equivalent to -32.1m (minus thirty two point one metres) OD (Ordnance Datum) or thereabout at its western boundary and -32.1m (minus thirty two point one metres) OD (Ordnance Datum) or thereabouts at its eastern boundary, and the lower surface of the stratum of the sub-soil is at a level equivalent to -50m (minus fifty metres) OD (Ordnance Datum) or thereabout at its western boundary and -50m (minus fifty metres) OD (Ordnance Datum) or thereabouts at its eastern boundary.	95 - London Borough of Lewisham	LN107109	
GRECT/2371	89 square metres of a stratum of subsoil below public footways (Evelyn Street, A200) where the upper surface of the stratum of the sub-soil is at a level equivalent to -32m (minus thirty two metres) OD (Ordnance Datum) or thereabout at its western boundary and -31.9m (minus thirty one point nine metres) OD (Ordnance Datum) or thereabouts at its eastern boundary, and the lower surface of the stratum of the sub-soil is at a level equivalent to -49.9m (minus forty nine point nine metres) OD (Ordnance Datum) or thereabout at its western boundary and -49.8m (minus forty nine point eight metres) OD (Ordnance Datum) or thereabouts at its eastern boundary.	95 - London Borough of Lewisham	TGL195269	
GRECT/2424	6.8 square metres of a stratum of subsoil below grassed area and shrubbery (off Rainsborough Avenue) where the upper surface of the stratum of the sub-soil is at a level equivalent to -34m (minus thirty four metres) OD (Ordnance Datum) or thereabout at its western boundary and -34m (minus thirty four metres) OD (Ordnance Datum) or thereabouts at its eastern boundary, and the lower surface of the stratum of the sub-soil is at a level equivalent to -51.9m (minus fifty one point nine metres) OD (Ordnance Datum) or thereabout at its western boundary and -51.9m (minus fifty one point nine metres) OD (Ordnance Datum) or thereabouts at its eastern	35 - London Borough of Lewisham	Unregistered	

	boundary.			
GRECT/2425	0.4 square metres of a stratum of subsoil below grassed area and shrubbery (off Rainsborough Avenue) where the upper surface of the stratum of the sub-soil is at a level equivalent to -34m (minus thirty four metres) OD (Ordnance Datum) or thereabout at its western boundary and -34m (minus thirty four metres) OD (Ordnance Datum) or thereabouts at its eastern boundary, and the lower surface of the stratum of the sub-soil is at a level equivalent to -51.9m (minus fifty one point nine metres) OD (Ordnance Datum) or thereabout at its western boundary and -51.9m (minus fifty one point nine metres) OD (Ordnance Datum) or thereabouts at its eastern boundary.	35 - London Borough of Lewisham	SGL49820	
GRECT/2426	156.8 square metres of a stratum of subsoil below garages, car park and access (Rainsborough Avenue) where the upper surface of the stratum of the sub-soil is at a level equivalent to -34.2m (minus thirty four point two metres) OD (Ordnance Datum) or thereabout at its western boundary and -34.1m (minus thirty four point one metres) OD (Ordnance Datum) or thereabouts at its eastern boundary, and the lower surface of the stratum of the sub-soil is at a level equivalent to -51.6m (minus fifty one point six metres) OD (Ordnance Datum) or thereabout at its western boundary and -51.6m (minus fifty one point six metres) OD (Ordnance Datum) or thereabouts at its eastern boundary.	36 - London Borough of Lewisham	Unregistered	
GRECT/2427	437.4 square metres of a stratum of subsoil below garages, car park and access (Rainsborough Avenue) where the upper surface of the stratum of the sub-soil is at a level equivalent to -34.2m (minus thirty four point two metres) OD (Ordnance Datum) or thereabout at its western boundary and -34m (minus thirty four metres) OD (Ordnance Datum) or thereabouts at its eastern boundary, and the lower surface of the stratum of the sub-soil is at a level equivalent to -51.6m (minus fifty one point six metres) OD (Ordnance Datum) or thereabout at its western boundary and -51.5m (minus fifty one point five metres) OD (Ordnance Datum) or thereabouts at its eastern boundary.	36 - London Borough of Lewisham	SGL185157	
GRECT/2428	40.5 square metres of a stratum of subsoil below garages, car park and access (Rainsborough Avenue) where the upper surface of the stratum of the sub-soil is at a level equivalent to -34.1m (minus thirty four point one metres) OD (Ordnance Datum) or thereabout at its western boundary and -34.1m (minus thirty four point one metres) OD (Ordnance Datum) or thereabouts at its eastern boundary, and the lower surface of the stratum of the sub-soil is at a level equivalent to -51.6m (minus fifty one point six metres) OD (Ordnance Datum) or thereabout at its western boundary and -51.6m (minus fifty one point six metres) OD (Ordnance Datum) or thereabouts at its eastern boundary.	36 - London Borough of Lewisham	SGL49820	
GRECT/2429	0.6 square metres of a stratum of subsoil below garages, car park and access (Rainsborough Avenue) where the upper surface of the stratum of the sub-soil is at a level equivalent to -34.1m (minus thirty four point one metres) OD (Ordnance Datum) or thereabout at its western boundary and -34.1m (minus thirty four point one metres) OD (Ordnance Datum) or thereabouts at its eastern boundary, and the lower surface of the stratum of the sub-soil is at a level equivalent to -51.6m (minus fifty one point six metres) OD (Ordnance Datum) or thereabout at its	36 - London Borough of Lewisham	Unregistered	

	western boundary and -51.6m (minus fifty one point six metres) OD (Ordnance Datum) or thereabouts at its eastern boundary.			
GRECT/2430	12 square metres of a stratum of subsoil below flats (Pendennis House) where the upper surface of the stratum of the sub-soil is at a level equivalent to -34.1m (minus thirty four point one metres) OD (Ordnance Datum) or thereabout at its western boundary and -34.1m (minus thirty four point one metres) OD (Ordnance Datum) or thereabouts at its eastern boundary, and the lower surface of the stratum of the sub-soil is at a level equivalent to -51.6m (minus fifty one point six metres) OD (Ordnance Datum) or thereabout at its western boundary and -51.6m (minus fifty one point six metres) OD (Ordnance Datum) or thereabouts at its eastern boundary.	37 - London Borough of Lewisham	Unregistered	
GRECT/2431	17.1 square metres of a stratum of subsoil below grassed area, shrubbery and footway (off Rainsborough Avenue) where the upper surface of the stratum of the sub-soil is at a level equivalent to -33.8m (minus thirty three point eight metres) OD (Ordnance Datum) or thereabout at its western boundary and -33.8m (minus thirty three point eight metres) OD (Ordnance Datum) or thereabouts at its eastern boundary, and the lower surface of the stratum of the sub-soil is at a level equivalent to -51.4m (minus fifty one point four metres) OD (Ordnance Datum) or thereabout at its western boundary and -51.4m (minus fifty one point four metres) OD (Ordnance Datum) or thereabouts at its eastern boundary.	42 - London Borough of Lewisham	SGL185157	
GRECT/2432	9 square metres of a stratum of subsoil below public road and footways (Oxestalls Road) and arches and hardstanding below where the upper surface of the stratum of the sub-soil is at a level equivalent to -33.8m (minus thirty three point eight metres) OD (Ordnance Datum) or thereabout at its western boundary and -33.8m (minus thirty three point eight metres) OD (Ordnance Datum) or thereabouts at its eastern boundary, and the lower surface of the stratum of the sub-soil is at a level equivalent to -51.3m (minus fifty one point three metres) OD (Ordnance Datum) or thereabout at its western boundary and -51.3m (minus fifty one point three metres) OD (Ordnance Datum) or thereabouts at its eastern boundary.	47 - London Borough of Lewisham	SGL185157	
GRECT/2433	0.6 square metres of a stratum of subsoil below development site (Deptford Landings) where the upper surface of the stratum of the sub-soil is at a level equivalent to -33.6m (minus thirty three point six metres) OD (Ordnance Datum) or thereabout at its western boundary and -33.6m (minus thirty three point six metres) OD (Ordnance Datum) or thereabouts at its eastern boundary, and the lower surface of the stratum of the sub-soil is at a level equivalent to -51.4m (minus fifty one point four metres) OD (Ordnance Datum) or thereabout at its western boundary and -51.4m (minus fifty one point four metres) OD (Ordnance Datum) or thereabouts at its eastern boundary.	52 - London Borough of Lewisham	TGL214423	
GRECT/2434	1.1 square metres of a stratum of subsoil below development site (Deptford Landings) where the upper surface of the stratum of the sub-soil is at a level equivalent to -33m (minus thirty three metres) OD (Ordnance Datum) or thereabout at its western boundary and -33m (minus thirty three metres) OD (Ordnance Datum) or thereabouts at its eastern boundary, and the lower surface of the stratum of the sub-soil is at a level	59 - London Borough of Lewisham	TGL509805	

	equivalent to -50.9m (minus fifty point nine metres) OD (Ordnance Datum) or thereabout at its western boundary and -50.9m (minus fifty point nine metres) OD (Ordnance Datum) or thereabouts at its eastern boundary.			
GRECT/2435	1.3 square metres of a stratum of subsoil below bridge structure where the upper surface of the stratum of the sub-soil is at a level equivalent to -33.1m (minus thirty three point one metres) OD (Ordnance Datum) or thereabout at its western boundary and -33m (minus thirty three metres) OD (Ordnance Datum) or thereabouts at its eastern boundary, and the lower surface of the stratum of the sub-soil is at a level equivalent to -50.9m (minus fifty point nine metres) OD (Ordnance Datum) or thereabout at its western boundary and -50.9m (minus fifty point nine metres) OD (Ordnance Datum) or thereabouts at its eastern boundary.	57 - London Borough of Lewisham	Unregistered	
GRECT/2436	20.5 square metres of a stratum of subsoil below public road, central reservations and footways (Evelyn Street, A200) where the upper surface of the stratum of the sub-soil is at a level equivalent to -33.2m (minus thirty three point two metres) OD (Ordnance Datum) or thereabout at its western boundary and -33.2m (minus thirty three point two metres) OD (Ordnance Datum) or thereabouts at its eastern boundary, and the lower surface of the stratum of the sub-soil is at a level equivalent to -50.7m (minus fifty point seven metres) OD (Ordnance Datum) or thereabout at its western boundary and -50.7m (minus fifty point seven metres) OD (Ordnance Datum) or thereabouts at its eastern boundary.	58 - London Borough of Lewisham	TGL41917	
GRECT/2437	11.7 square metres of a stratum of subsoil below public road, central reservations and footways (Evelyn Street, A200) where the upper surface of the stratum of the sub-soil is at a level equivalent to -33m (minus thirty three metres) OD (Ordnance Datum) or thereabout at its western boundary and -33m (minus thirty three metres) OD (Ordnance Datum) or thereabouts at its eastern boundary, and the lower surface of the stratum of the sub-soil is at a level equivalent to -50.5m (minus fifty point five metres) OD (Ordnance Datum) or thereabout at its western boundary and -50.5m (minus fifty point five metres) OD (Ordnance Datum) or thereabouts at its eastern boundary.	58 - London Borough of Lewisham	TGL41917	
GRECT/2438	31 square metres of a stratum of subsoil below public road, central reservations and footways (Evelyn Street, A200) where the upper surface of the stratum of the sub-soil is at a level equivalent to -33m (minus thirty three metres) OD (Ordnance Datum) or thereabout at its western boundary and -33m (minus thirty three metres) OD (Ordnance Datum) or thereabouts at its eastern boundary, and the lower surface of the stratum of the sub-soil is at a level equivalent to -50.5m (minus fifty point five metres) OD (Ordnance Datum) or thereabout at its western boundary and -50.5m (minus fifty point five metres) OD (Ordnance Datum) or thereabouts at its eastern boundary.	58 - London Borough of Lewisham	LN188560	
GRECT/2439	0.1 square metres of a stratum of subsoil below development site (Deptford Landings) where the upper surface of the stratum of the sub-soil is at a level equivalent to -33.6m (minus thirty three point six metres) OD (Ordnance Datum) or thereabout at its western boundary and -33.6m (minus thirty three point six metres) OD (Ordnance Datum) or thereabouts at its eastern boundary, and the lower surface of the stratum of the sub-soil is at a level equivalent to -51.4m (minus fifty one point four metres) OD (Ordnance Datum) or thereabout at its	48 - London Borough of Lewisham	TGL214423	

	western boundary and -51.4m (minus fifty one point four metres) OD (Ordnance Datum) or thereabouts at its eastern boundary.			
GRECT/2440	13.1 square metres of a stratum of subsoil below public road, central reservations and footways (Evelyn Street, A200) where the upper surface of the stratum of the sub-soil is at a level equivalent to -32.7m (minus thirty two point seven metres) OD (Ordnance Datum) or thereabout at its western boundary and -32.7m (minus thirty two point seven metres) OD (Ordnance Datum) or thereabouts at its eastern boundary, and the lower surface of the stratum of the sub-soil is at a level equivalent to -50.3m (minus fifty point three metres) OD (Ordnance Datum) or thereabout at its western boundary and -50.3m (minus fifty point three metres) OD (Ordnance Datum) or thereabouts at its eastern boundary.	58 - London Borough of Lewisham	TGL41920	
GRECT/2441	3.5 square metres of a stratum of subsoil below public road, central reservations and footways (Evelyn Street, A200) where the upper surface of the stratum of the sub-soil is at a level equivalent to -32.6m (minus thirty two point six metres) OD (Ordnance Datum) or thereabout at its western boundary and -32.6m (minus thirty two point six metres) OD (Ordnance Datum) or thereabouts at its eastern boundary, and the lower surface of the stratum of the sub-soil is at a level equivalent to -50.1m (minus fifty point one metres) OD (Ordnance Datum) or thereabout at its western boundary and -50.1m (minus fifty point one metres) OD (Ordnance Datum) or thereabouts at its eastern boundary.	58 - London Borough of Lewisham	TGL41920	
GRECT/2442	82.1 square metres of a stratum of subsoil below public footway (Evelyn Street, A200) where the upper surface of the stratum of the sub-soil is at a level equivalent to -32.4m (minus thirty two point four metres) OD (Ordnance Datum) or thereabout at its western boundary and -32.2m (minus thirty two point two metres) OD (Ordnance Datum) or thereabouts at its eastern boundary, and the lower surface of the stratum of the sub-soil is at a level equivalent to -50.3m (minus fifty point three metres) OD (Ordnance Datum) or thereabout at its western boundary and -50m (minus fifty metres) OD (Ordnance Datum) or thereabouts at its eastern boundary.	58 - London Borough of Lewisham	TGL195269	
GRECT/2443	38.9 square metres of a stratum of subsoil below public road, central reservations and footways (Evelyn Street, A200) where the upper surface of the stratum of the sub-soil is at a level equivalent to -32.5m (minus thirty two point five metres) OD (Ordnance Datum) or thereabout at its western boundary and -32.4m (minus thirty two point four metres) OD (Ordnance Datum) or thereabouts at its eastern boundary, and the lower surface of the stratum of the sub-soil is at a level equivalent to -50m (minus fifty metres) OD (Ordnance Datum) or thereabout at its western boundary and -49.9m (minus forty nine point nine metres) OD (Ordnance Datum) or thereabouts at its eastern boundary.	58 - London Borough of Lewisham	TGL41915	
GRECT/2444	32.5 square metres of a stratum of subsoil below garden and hardstanding (Howard House, Evelyn Street) where the upper surface of the stratum of the sub-soil is at a level equivalent to -31.8m (minus thirty one point eight metres) OD (Ordnance Datum) or thereabout at its western boundary and -31.7m (minus thirty one point seven metres) OD (Ordnance Datum) or thereabouts at its eastern boundary, and the lower surface of the stratum of the sub-soil is at a level equivalent to -49.6m (minus forty	95 - London Borough of Lewisham	324411	

	nine point six metres) OD (Ordnance Datum) or thereabout at its western boundary and -49.6m (minus forty nine point six metres) OD (Ordnance Datum) or thereabouts at its eastern boundary.			
GRECT/2445	7.2 square metres of a stratum of subsoil below grassed area (Norris House) where the upper surface of the stratum of the sub-soil is at a level equivalent to -33m (minus thirty three metres) OD (Ordnance Datum) or thereabout at its western boundary and -33m (minus thirty three metres) OD (Ordnance Datum) or thereabouts at its eastern boundary, and the lower surface of the stratum of the sub-soil is at a level equivalent to -50.8m (minus fifty point eight metres) OD (Ordnance Datum) or thereabout at its western boundary and -50.8m (minus fifty point eight metres) OD (Ordnance Datum) or thereabouts at its eastern boundary.	58 - London Borough of Lewisham	LN69694	
GRECT/2447	13.1 square metres of a stratum of subsoil below hardstanding (Faircharm Trading Estate, 8 to 12, Creekside) and watercourse (Deptford Creek), and bed thereof where the upper surface of the stratum of the sub-soil is at a level equivalent to -30.2m (minus thirty point two metres) OD (Ordnance Datum) or thereabout at its western boundary and -30.2m (minus thirty point two metres) OD (Ordnance Datum) or thereabouts at its eastern boundary, and the lower surface of the stratum of the sub-soil is at a level equivalent to -48.1m (minus forty eight point one metres) OD (Ordnance Datum) or thereabout at its western boundary and -48.1m (minus forty eight point one metres) OD (Ordnance Datum) or thereabouts at its eastern boundary.	196 - London Borough of Lewisham	SGL155433	
GRECT/2448	92.5 square metres of a stratum of subsoil below public road, traffic island and footways (Crossfield Street) where the upper surface of the stratum of the sub-soil is at a level equivalent to -31m (minus thirty one metres) OD (Ordnance Datum) or thereabout at its western boundary and -30.8m (minus thirty point eight metres) OD (Ordnance Datum) or thereabouts at its eastern boundary, and the lower surface of the stratum of the sub-soil is at a level equivalent to -48.9m (minus forty eight point nine metres) OD (Ordnance Datum) or thereabout at its western boundary and -48.7m (minus forty eight point seven metres) OD (Ordnance Datum) or thereabouts at its eastern boundary.	150 - London Borough of Lewisham	Unregistered	
GRECT/2449	0.7 square metres of a stratum of subsoil below public road and footways (Crossfield Street) where the upper surface of the stratum of the sub-soil is at a level equivalent to -31.1m (minus thirty one point one metres) OD (Ordnance Datum) or thereabout at its western boundary and -31m (minus thirty one metres) OD (Ordnance Datum) or thereabouts at its eastern boundary, and the lower surface of the stratum of the sub-soil is at a level equivalent to -48.9m (minus forty eight point nine metres) OD (Ordnance Datum) or thereabout at its western boundary and -48.9m (minus forty eight point nine metres) OD (Ordnance Datum) or thereabouts at its eastern boundary.	150 - London Borough of Lewisham	SGL55204	
GRECT/2450	59.2 square metres of a stratum of subsoil below public road, traffic island and footways (Crossfield Street) where the upper surface of the stratum of the sub-soil is at a level equivalent to -31m (minus thirty one metres) OD (Ordnance Datum) or thereabout at its western boundary and -31.1m (minus thirty one point one metres) OD (Ordnance Datum) or thereabouts at its eastern boundary, and the lower surface of the stratum of the sub-soil is at a	150 - London Borough of Lewisham	SGL164777	

	level equivalent to -48.9m (minus forty eight point nine metres) OD (Ordnance Datum) or thereabout at its western boundary and -48.7m (minus forty eight point seven metres) OD (Ordnance Datum) or thereabouts at its eastern boundary.			
GRECT/2451	81.1 square metres of a stratum of subsoil below public road, traffic island and footways (Crossfield Street) where the upper surface of the stratum of the sub-soil is at a level equivalent to -31m (minus thirty one metres) OD (Ordnance Datum) or thereabout at its western boundary and -31.1m (minus thirty one point one metres) OD (Ordnance Datum) or thereabouts at its eastern boundary, and the lower surface of the stratum of the sub-soil is at a level equivalent to -48.9m (minus forty eight point nine metres) OD (Ordnance Datum) or thereabout at its western boundary and -48.7m (minus forty eight point seven metres) OD (Ordnance Datum) or thereabouts at its eastern boundary.	150 - London Borough of Lewisham	SGL164777	
GRECT/2452	466.5 square metres of a stratum of subsoil below public road, traffic island and footways (Crossfield Street) where the upper surface of the stratum of the sub-soil is at a level equivalent to -31m (minus thirty one metres) OD (Ordnance Datum) or thereabout at its western boundary and -31.1m (minus thirty one point one metres) OD (Ordnance Datum) or thereabouts at its eastern boundary, and the lower surface of the stratum of the sub-soil is at a level equivalent to -48.9m (minus forty eight point nine metres) OD (Ordnance Datum) or thereabout at its western boundary and -48.7m (minus forty eight point seven metres) OD (Ordnance Datum) or thereabouts at its eastern boundary.	150 - London Borough of Lewisham	SGL164777	
GRECT/2453	25.9 square metres of a stratum of subsoil below public road, traffic island and footways (Crossfield Street) where the upper surface of the stratum of the sub-soil is at a level equivalent to -31m (minus thirty one metres) OD (Ordnance Datum) or thereabout at its western boundary and -31.1m (minus thirty one point one metres) OD (Ordnance Datum) or thereabouts at its eastern boundary, and the lower surface of the stratum of the sub-soil is at a level equivalent to -48.9m (minus forty eight point nine metres) OD (Ordnance Datum) or thereabout at its western boundary and -48.7m (minus forty eight point seven metres) OD (Ordnance Datum) or thereabouts at its eastern boundary.	150 - London Borough of Lewisham	SGL50271	
GRECT/2455	2.1 square metres of a stratum of subsoil below flats (Prospect Place) where the upper surface of the stratum of the sub-soil is at a level equivalent to -32.5m (minus thirty two point five metres) OD (Ordnance Datum) or thereabout at its western boundary and -32.4m (minus thirty two point four metres) OD (Ordnance Datum) or thereabouts at its eastern boundary, and the lower surface of the stratum of the sub-soil is at a level equivalent to -50.3m (minus fifty point three metres) OD (Ordnance Datum) or thereabout at its western boundary and -50.3m (minus fifty point three metres) OD (Ordnance Datum) or thereabouts at its eastern boundary.	87 - London Borough of Lewisham	SGL426566	
GRECT/2456	3 square metres of a stratum of subsoil below flats (Prospect Place) where the upper surface of the stratum of the sub-soil is at a level equivalent to -32.5m (minus thirty two point five metres) OD (Ordnance Datum) or thereabout at its western boundary and -32.4m (minus thirty two point four metres) OD (Ordnance Datum) or thereabouts at its eastern boundary, and the lower surface	87 - London Borough of Lewisham	363229	

	of the stratum of the sub-soil is at a level equivalent to -50.3m (minus fifty point three metres) OD (Ordnance Datum) or thereabout at its western boundary and -50.3m (minus fifty point three metres) OD (Ordnance Datum) or thereabouts at its eastern boundary.			
GRECT/2457	4.2 square metres of a stratum of subsoil below flats (Prospect Place) where the upper surface of the stratum of the sub-soil is at a level equivalent to -32.5m (minus thirty two point five metres) OD (Ordnance Datum) or thereabout at its western boundary and -32.4m (minus thirty two point four metres) OD (Ordnance Datum) or thereabouts at its eastern boundary, and the lower surface of the stratum of the sub-soil is at a level equivalent to -50.3m (minus fifty point three metres) OD (Ordnance Datum) or thereabout at its western boundary and -50.3m (minus fifty point three metres) OD (Ordnance Datum) or thereabouts at its eastern boundary.	87 - London Borough of Lewisham	SGL426805	
GRECT/2458	6.1 square metres of a stratum of subsoil below flats (Prospect Place) where the upper surface of the stratum of the sub-soil is at a level equivalent to -32.5m (minus thirty two point five metres) OD (Ordnance Datum) or thereabout at its western boundary and -32.4m (minus thirty two point four metres) OD (Ordnance Datum) or thereabouts at its eastern boundary, and the lower surface of the stratum of the sub-soil is at a level equivalent to -50.3m (minus fifty point three metres) OD (Ordnance Datum) or thereabout at its western boundary and -50.3m (minus fifty point three metres) OD (Ordnance Datum) or thereabouts at its eastern boundary.	87 - London Borough of Lewisham	370559	
GRECT/2459	5 square metres of a stratum of subsoil below public road and footway (Evelyn Street) where the upper surface of the stratum of the sub-soil is at a level equivalent to -32.1m (minus thirty two point one metres) OD (Ordnance Datum) or thereabout at its western boundary and -32.1m (minus thirty two point one metres) OD (Ordnance Datum) or thereabouts at its eastern boundary, and the lower surface of the stratum of the sub-soil is at a level equivalent to -50m (minus fifty metres) OD (Ordnance Datum) or thereabout at its western boundary and -50m (minus fifty metres) OD (Ordnance Datum) or thereabouts at its eastern boundary.	99 - London Borough of Lewisham	Unregistered	
GRECT/2460	2 square metres of a stratum of subsoil below public road and footways (Evelyn Street) where the upper surface of the stratum of the sub-soil is at a level equivalent to -32.1m (minus thirty two point one metres) OD (Ordnance Datum) or thereabout at its western boundary and -32.1m (minus thirty two point one metres) OD (Ordnance Datum) or thereabouts at its eastern boundary, and the lower surface of the stratum of the sub-soil is at a level equivalent to -49.9m (minus forty nine point nine metres) OD (Ordnance Datum) or thereabout at its western boundary and -49.9m (minus forty nine point nine metres) OD (Ordnance Datum) or thereabouts at its eastern boundary.	100 - London Borough of Lewisham	Unregistered	
GRECT/2461	0.9 square metres of a stratum of subsoil below Akwaaba Community Centre, Grinling Place where the upper surface of the stratum of the sub-soil is at a level equivalent to -31.6m (minus thirty one point six metres) OD (Ordnance Datum) or thereabout at its western boundary and -31.4m (minus thirty one point four metres) OD (Ordnance Datum) or thereabouts at its eastern boundary, and the lower surface of the stratum of the sub-soil is at a level equivalent to -49.4m (minus forty nine point four metres)	104 - London Borough of Lewisham	TGL19059	



	OD (Ordnance Datum) or thereabout at its western boundary and -49.3m (minus forty nine point three metres) OD (Ordnance Datum) or thereabouts at its eastern boundary.			
GRECT/2462	1 square metre of a stratum of subsoil below public footway and cycleway (off Evelyn Street) where the upper surface of the stratum of the sub-soil is at a level equivalent to -31.6m (minus thirty one point six metres) OD (Ordnance Datum) or thereabout at its western boundary and -31.5m (minus thirty one point five metres) OD (Ordnance Datum) or thereabouts at its eastern boundary, and the lower surface of the stratum of the sub-soil is at a level equivalent to -49.4m (minus forty nine point four metres) OD (Ordnance Datum) or thereabout at its western boundary and -49.4m (minus forty nine point four metres) OD (Ordnance Datum) or thereabouts at its eastern boundary.	105 - London Borough of Lewisham	Unregistered	
GRECT/2463	264.2 square metres of a stratum of subsoil below car park and footways (off Grinling Place) where the upper surface of the stratum of the sub-soil is at a level equivalent to -31.5m (minus thirty one point five metres) OD (Ordnance Datum) or thereabout at its western boundary and -31.4m (minus thirty one point four metres) OD (Ordnance Datum) or thereabouts at its eastern boundary, and the lower surface of the stratum of the sub-soil is at a level equivalent to -49.3m (minus forty nine point three metres) OD (Ordnance Datum) or thereabout at its western boundary and -49.3m (minus forty nine point three metres) OD (Ordnance Datum) or thereabouts at its eastern boundary.	105 - London Borough of Lewisham	LN240502	
GRECT/2464	9.9 square metres of a stratum of subsoil below shop, storage, yard and flats (227, Deptford High Street), car wash, hardstanding (404, Evelyn Street) where the upper surface of the stratum of the sub-soil is at a level equivalent to -31.5m (minus thirty one point five metres) OD (Ordnance Datum) or thereabout at its western boundary and -31.5m (minus thirty one point five metres) OD (Ordnance Datum) or thereabouts at its eastern boundary, and the lower surface of the stratum of the sub-soil is at a level equivalent to -49.4m (minus forty nine point four metres) OD (Ordnance Datum) or thereabout at its western boundary and -49.3m (minus forty nine point three metres) OD (Ordnance Datum) or thereabouts at its eastern boundary.	106 - London Borough of Lewisham	TGL115248	
GRECT/2465	0.6 square metres of a stratum of subsoil below verge (Crossfield Street and Coffey Street) where the upper surface of the stratum of the sub-soil is at a level equivalent to -31.1m (minus thirty one point one metres) OD (Ordnance Datum) or thereabout at its western boundary and -31m (minus thirty one metres) OD (Ordnance Datum) or thereabouts at its eastern boundary, and the lower surface of the stratum of the sub-soil is at a level equivalent to -48.9m (minus forty eight point nine metres) OD (Ordnance Datum) or thereabout at its western boundary and -48.9m (minus forty eight point nine metres) OD (Ordnance Datum) or thereabouts at its eastern boundary.	148 - London Borough of Lewisham	TGL166724	
GRECT/2466	128.2 square metres of a stratum of subsoil below public road, traffic island and footways (Crossfield Street) where the upper surface of the stratum of the sub-soil is at a level equivalent to -31.1m (minus thirty one point one metres) OD (Ordnance Datum) or thereabout at its western boundary and -31m (minus thirty one metres) OD	149 - London Borough of Lewisham	TGL166724	

	(Ordnance Datum) or thereabouts at its eastern boundary, and the lower surface of the stratum of the sub-soil is at a level equivalent to -48.9m (minus forty eight point nine metres) OD (Ordnance Datum) or thereabout at its western boundary and -48.9m (minus forty eight point nine metres) OD (Ordnance Datum) or thereabouts at its eastern boundary.			
GRECT/2467	7.2 square metres of a stratum of subsoil below public road, traffic island and footways (Crossfield Street) where the upper surface of the stratum of the sub-soil is at a level equivalent to -31.1m (minus thirty one point one metres) OD (Ordnance Datum) or thereabout at its western boundary and -31m (minus thirty one metres) OD (Ordnance Datum) or thereabouts at its eastern boundary, and the lower surface of the stratum of the sub-soil is at a level equivalent to -48.9m (minus forty eight point nine metres) OD (Ordnance Datum) or thereabout at its western boundary and -48.9m (minus forty eight point nine metres) OD (Ordnance Datum) or thereabouts at its eastern boundary.	149 - London Borough of Lewisham	Unregistered	
GRECT/2468	0.1 square metres of a stratum of subsoil below footway and cycle way (off Evelyn Street) where the upper surface of the stratum of the sub-soil is at a level equivalent to -31.7m (minus thirty one point seven metres) OD (Ordnance Datum) or thereabout at its western boundary and -31.7m (minus thirty one point seven metres) OD (Ordnance Datum) or thereabouts at its eastern boundary, and the lower surface of the stratum of the sub-soil is at a level equivalent to -49.5m (minus forty nine point five metres) OD (Ordnance Datum) or thereabout at its western boundary and -49.5m (minus forty nine point five metres) OD (Ordnance Datum) or thereabouts at its eastern boundary.	95 - London Borough of Lewisham	TGL18040	
GRECT/2469	1.5 square metres of a stratum of subsoil below restaurant, forecourt and car park (154 to 164, Evelyn Street) where the upper surface of the stratum of the sub-soil is at a level equivalent to -33.1m (minus thirty three point one metres) OD (Ordnance Datum) or thereabout at its western boundary and -33m (minus thirty three point four metres) OD (Ordnance Datum) or thereabouts at its eastern boundary, and the lower surface of the stratum of the sub-soil is at a level equivalent to -50.6m (minus fifty point six metres) OD (Ordnance Datum) or thereabout at its western boundary and -50.5m (minus fifty point five metres) OD (Ordnance Datum) or thereabouts at its eastern boundary.	63 - London Borough of Lewisham	TGL115365, TGL544930	
GRECT/2471	0.7 square metres of a stratum of subsoil below restaurant, forecourt and car park (154 to 164, Evelyn Street) where the upper surface of the stratum of the sub-soil is at a level equivalent to -33.1m (minus thirty three point one metres) OD (Ordnance Datum) or thereabout at its western boundary and -33m (minus thirty three point four metres) OD (Ordnance Datum) or thereabouts at its eastern boundary, and the lower surface of the stratum of the sub-soil is at a level equivalent to -50.6m (minus fifty point six metres) OD (Ordnance Datum) or thereabout at its western boundary and -50.5m (minus fifty point five metres) OD (Ordnance Datum) or thereabouts at its eastern boundary.	61 - London Borough of Lewisham	TGL115365, TGL544930	
GRECT/2472	9.3 square metres of a stratum of subsoil below public road and footways (Evelyn Street, A200) where the upper surface of the stratum of the sub-soil is at a level equivalent to -33.1m (minus thirty three point one metres) OD (Ordnance Datum) or thereabout at its western boundary and -33.1m (minus thirty three point one metres)	58 - London Borough of Lewisham	TGL41917	

	OD (Ordnance Datum) or thereabouts at its eastern boundary, and the lower surface of the stratum of the sub-soil is at a level equivalent to -50.6m (minus fifty point six metres) OD (Ordnance Datum) or thereabout at its western boundary and -50.6m (minus fifty point six metres) OD (Ordnance Datum) or thereabouts at its eastern boundary.			
GRECT/2473	2.5 square metres of a stratum of subsoil below public road and footways (Evelyn Street, A200) where the upper surface of the stratum of the sub-soil is at a level equivalent to -33.1m (minus thirty three point one metres) OD (Ordnance Datum) or thereabout at its western boundary and -33.1m (minus thirty three point one metres) OD (Ordnance Datum) or thereabouts at its eastern boundary, and the lower surface of the stratum of the sub-soil is at a level equivalent to -50.6m (minus fifty point six metres) OD (Ordnance Datum) or thereabout at its western boundary and -50.6m (minus fifty point six metres) OD (Ordnance Datum) or thereabouts at its eastern boundary.	63 - London Borough of Lewisham	TGL41917	
GRECT/2475	19.8 square metres of a stratum of subsoil below public road and footways (Dragoon Road) where the upper surface of the stratum of the sub-soil is at a level equivalent to -33m (minus thirty three metres) OD (Ordnance Datum) or thereabout at its western boundary and -33m (minus thirty three metres) OD (Ordnance Datum) or thereabouts at its eastern boundary, and the lower surface of the stratum of the sub-soil is at a level equivalent to -50.9m (minus fifty point nine metres) OD (Ordnance Datum) or thereabout at its western boundary and -50.8m (minus fifty point eight metres) OD (Ordnance Datum) or thereabouts at its eastern boundary.	59 - London Borough of Lewisham	LN69694	

**EXECUTION PAGE**

The Common seal of **Thames Water** )  
**Utilities Limited** was affixed in the )  
presence of: )

Jacqueline Sandison  
Senior Legal Counsel



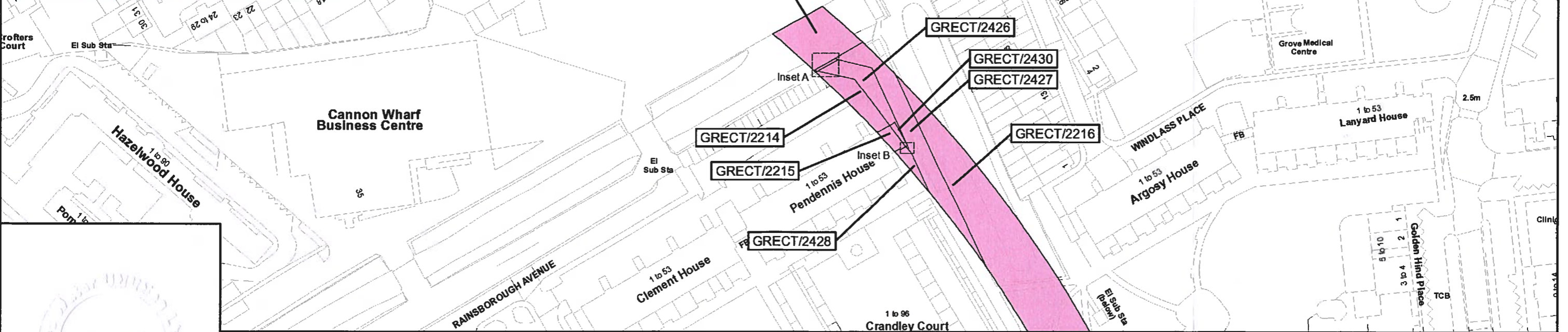
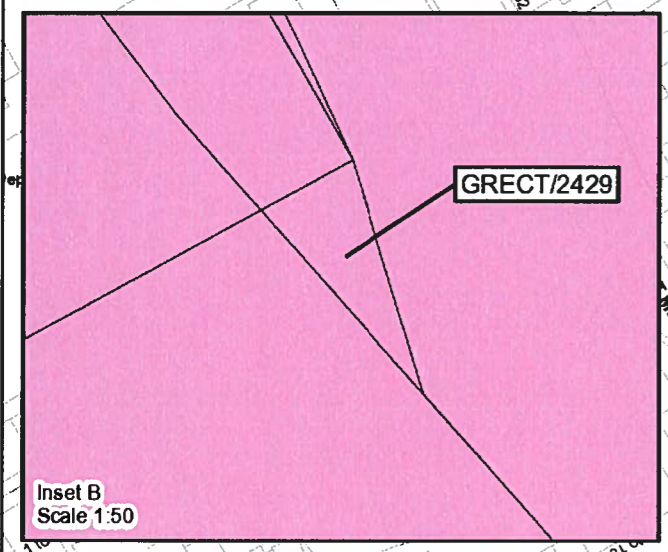
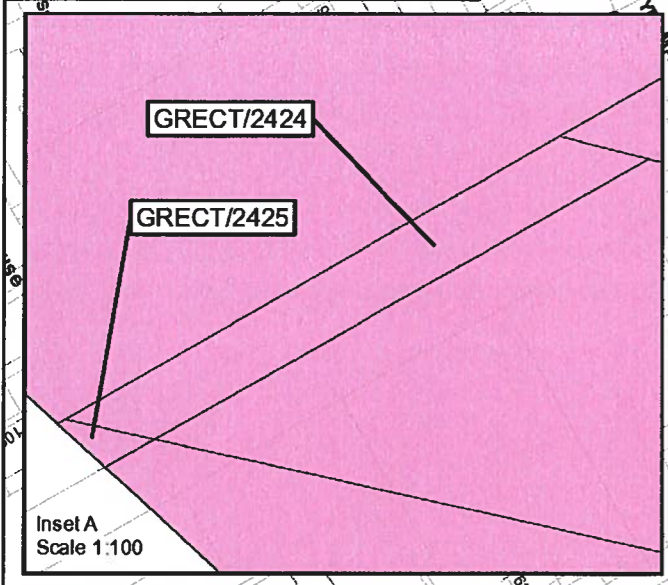
A handwritten signature in blue ink, appearing to be "J. Sandison".

.....  
Authorised Signatory

.....  
12 June 2024

Date

This map is reproduced from Ordnance Survey material with permission of Ordnance Survey on behalf of the Controller of Her Majesty's Stationery Office. Crown Copyright. Unauthorised reproduction infringes Crown Copyright and may lead to prosecution or civil proceedings. 100022432 2024



2024-1400

The Common seal of Thames Water Utilities Limited was affixed in the presence of:

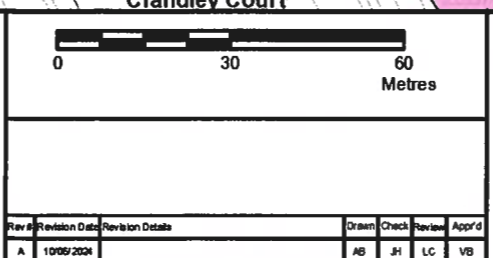
*[Signature]*  
Authorised Signatory

Dated: 12 June 2024

Key

Permanent Acquisition of Land

Jacqueline Sandison  
Senior Legal Counsel



The Thames Water Utilities Limited (Thames Tideway Tunnel) Order 2014 (AS AMENDED) SI 2014 NO 2384

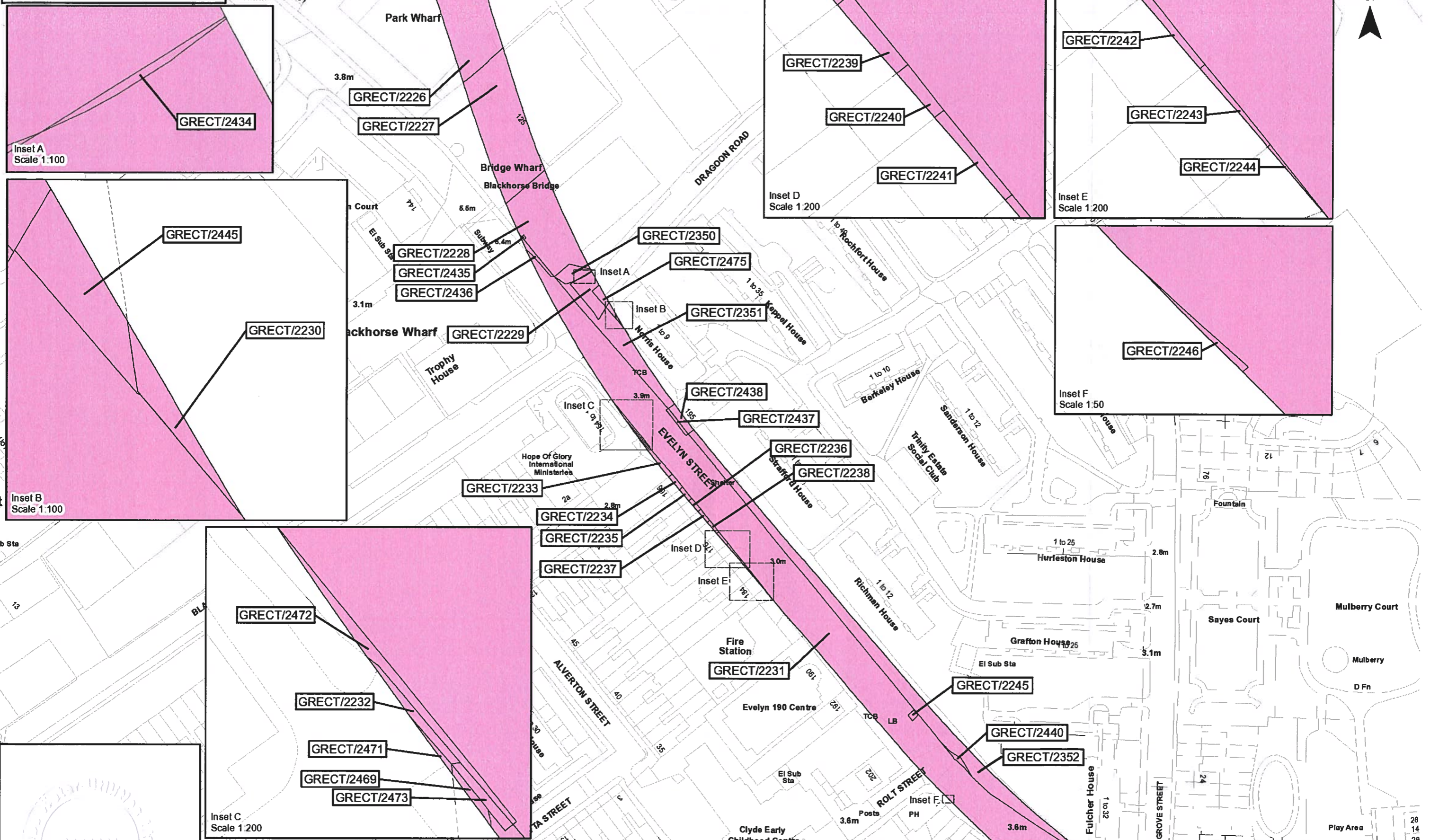
Plan referred to in General Vesting Declaration No. 37 of The Thames Water Utilities Limited (Thames Tideway Tunnel) Order 2014 (AS AMENDED) SI 2014 NO 2384

For identification only

Document Reference  
70054885-NTC-GVD-TR2-GVD37-0001



This map is reproduced from Ordnance Survey material with permission of Ordnance Survey on behalf of the Controller of Her Majesty's Stationery Office. © Crown Copyright. Unauthorised reproduction infringes Crown Copyright and may lead to prosecution or civil proceedings. 100022432 2024



Inset A  
Scale 1:100

Inset B  
Scale 1:100

Inset C  
Scale 1:200

Inset D  
Scale 1:200

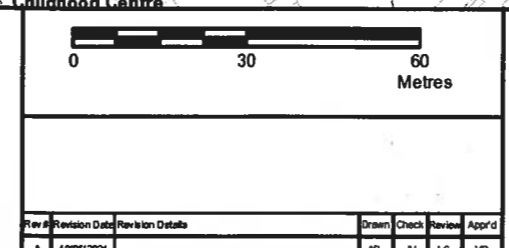
Inset E  
Scale 1:200

Inset F  
Scale 1:500

2024-1402

The Common seal of Thames Water Utilities Limited was affixed in the presence of:  
  
 Authorised Signatory  
 Dated: 12 June 2024

Key  
 Permanent Acquisition of Land  
 Jacqueline Sandison  
 Senior Legal Counsel

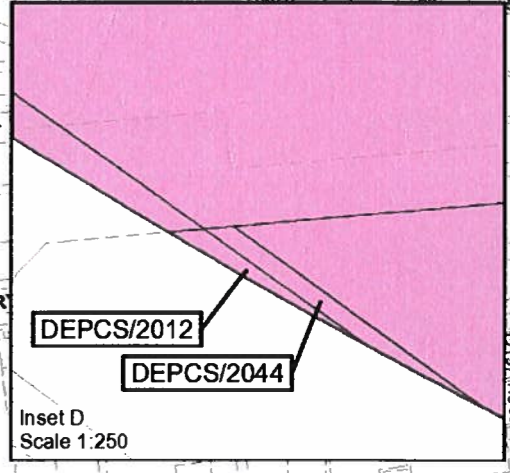
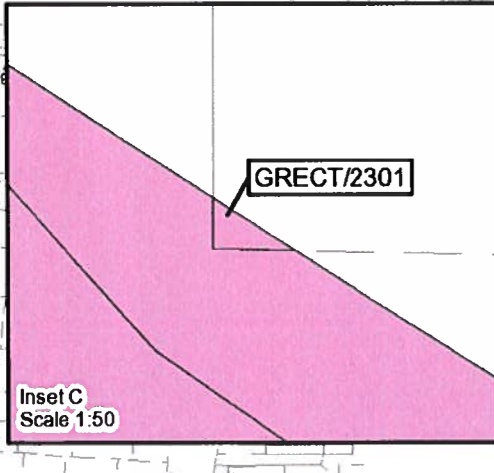
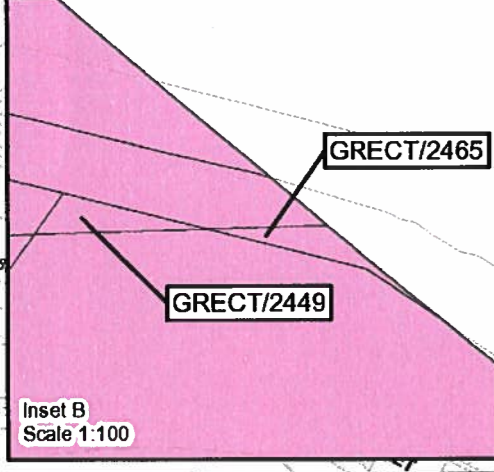
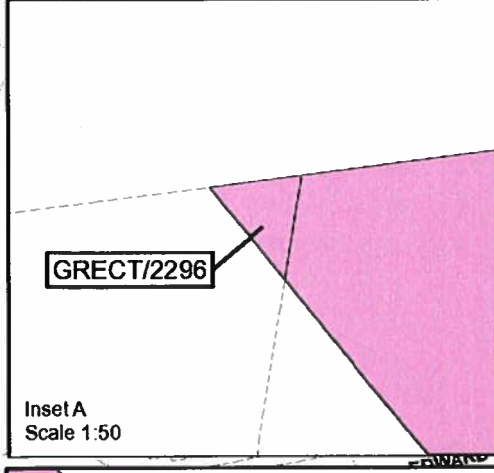


The Thames Water Utilities Limited (Thames Tideway Tunnel) Order 2014 (AS AMENDED) SI 2014 NO 2384  
 Drawing Title  
 Plan referred to in General Vesting Declaration No. 37 of The Thames Water Utilities Limited (Thames Tideway Tunnel) Order 2014 (AS AMENDED) SI 2014 NO 2384  
 Status: For identification only  
 Document Reference: 70054885-NTC-GVD-TR2-GVD37-0003







This map is reproduced from Ordnance Survey material with permission of Ordnance Survey on behalf of the Controller of Her Majesty's Stationery Office. © Crown Copyright. Unauthorised reproduction infringes Crown Copyright and may lead to prosecution or civil proceedings. 10022432 2024



2024-1404

The Common seal of Thames Water Utilities Limited was affixed in the presence of  
  
 Authorised Signatory  
 Dated: 12 June 2024

Key  
 Permanent Acquisition of Land  
 Jacqueline Sandison  
 Senior Legal Counsel

0 30 60 Metres															
wsp															
<table border="1"> <tr> <th>Rev</th> <th>Revision Date</th> <th>Revision Details</th> <th>Drawn</th> <th>Check</th> <th>Review</th> <th>App'd</th> </tr> <tr> <td>A</td> <td>10/06/2024</td> <td></td> <td>AB</td> <td>JH</td> <td>LC</td> <td>VB</td> </tr> </table>		Rev	Revision Date	Revision Details	Drawn	Check	Review	App'd	A	10/06/2024		AB	JH	LC	VB
Rev	Revision Date	Revision Details	Drawn	Check	Review	App'd									
A	10/06/2024		AB	JH	LC	VB									

Thames Water  
**Tideway**  
 Date: 10/06/2024  
 Scale at A3 1:1,250

The Thames Water Utilities Limited (Thames Tideway Tunnel) Order 2014 (AS AMENDED) SI 2014 NO 2384  
 Drawing Title  
 Plan referred to in General Vesting Declaration No. 37 of The Thames Water Utilities Limited (Thames Tideway Tunnel) Order 2014 (AS AMENDED) SI 2014 NO 2384  
 Status: For identification only  
 Document Reference  
 70054885-NTC-GVD-TR2-GVD37-0005

