

THE THAMES WATER UTILITIES LIMITED (THAMES TIDEWAY TUNNEL) ORDER 2014 (AS AMENDED)¹ SI 2014 NO.2384

GENERAL VESTING DECLARATION No. 39

This GENERAL VESTING DECLARATION NO. 39 is made the 12 day of June 2024 by Thames Water Utilities Limited ("Thames Water").

WHEREAS:

- 1 On 3 September 2014 an order entitled The Thames Water Utilities Limited (Thames Tideway Tunnel) Order 2014 (as amended) SI 2014 No.2384 ("the Order") was made (and came into force on 24 September 2014) by the Secretaries of State for Communities and Local Government and Environment, Food and Rural Affairs under the powers conferred on them by the Planning Act 2008 authorising Thames Water to acquire the land specified in the Schedule hereto.
- 2 Notice of the making/confirmation of the Order was first published in accordance with section 134 of the Planning Act 2008 on 19 September 2014.
- 3 Preliminary notice of the intention to make a general vesting declaration in respect of any of the land described in the Schedule hereto was first published on **24 November 2023** in accordance with section 3 of the Compulsory Purchase (Vesting Declarations) Act 1981 ("the 1981 Act")², as modified by Article 34 of the Order.
- 4 That preliminary notice included the particulars specified in section 3(3) of the 1981 Act, as modified by Article 34 of the Order.
- 5 The notice referred to in (4) above specified the period of two months beginning with the date of its first publication as the period before the end of which this general vesting declaration could not be executed.

NOW THIS DEED WITNESSETH that, in exercise of the powers conferred on them by the Order and section 4 of the 1981 Act, Thames Water hereby declare:

Save in so far as they comprise or affect interests of Excluded Persons (listed in column 5 of the Schedule), the land described in the Schedule hereto being part of the land authorised to be acquired by the Order and more particularly delineated on the plans annexed hereto, together with the right to enter upon and take possession of the land shall vest in the Thames Water as from the end of the period of 28 days from the date on which the service of notices required by section 6 of the 1981 Act and in accordance with Article 34 of the Order is completed.

¹ The Order has been amended by (1) SI 2015/723 issued on 17 March 2015; (2) SI 2017/659 issued on 16 May 2017; (3) SI 2018/1262 issued 29 November 2018; (4) Notices of Variation Nos.1 and 2 Issued on 17 March 2015 and 17 August 2017 respectively in respect of the Deemed Marine Licence; (5) SI 2020/268 issued on 10 March 2020; and (6) SI 2020/862 issued on 13 August 2020.

² The Version of the 1981 Act is the version that applied immediately prior to amendments brought in by the Housing and Planning Bill on 13 October 2015 and as modified by the Order.

SCHEDULE

The land

| Reference number on attached notice plan | Description of the land | Associated Book of | Title Number | Excluded |
|------------------------------------------|-------------------------------------------------------------------------------------------------------------------------------------------------------------------------------------------------------------------------------------------------------------------------------------------------------------------------------------------------------------------------------------------------------------------------------------------------------------------------------------------------------------------------------------------------------------------------------------------------------------------------------------------------------------------------------------------------------------------------------------------------------------------------------------------|--------------------------------------|-----------------------------------------------------------------------------|----------------------|
| | | Reference plot number | | Persons |
| MNTLD/2070 | 109.7 square metres of a stratum of subsoil below hardstanding and underground car parking (off Basin Approach) and public road and footways (Limehouse Link, A1203) where the upper surface of the stratum of the sub-soil is at a level equivalent to -41.8m (minus forty one point eight metres) OD (Ordnance Datum) or thereabout at its western boundary and -41.9m (minus forty one point nine metres) OD (Ordnance Datum) or thereabouts at its eastern boundary, and the lower surface of the stratum of the sub-soil is at a level equivalent to -62.8m (minus sixty two point eight metres) OD (Ordnance Datum) or thereabout at its western boundary and -62.9m (minus sixty two point nine metres) OD (Ordnance Datum) or thereabouts at its eastern boundary. | 76 - London Borough of Tower Hamlets | EGL218237, EGL463988, EGL424645 | Transport for London |
| MNTLD/2071 | 91.3 square metres of a stratum of subsoil below flats and underground car parking (97 to 126, Basin Approach) and tunnel carrying public road and footways (Limehouse Link, A1203) where the upper surface of the stratum of the sub-soil is at a level equivalent to -41.8m (minus forty one point eight metres) OD (Ordnance Datum) or thereabout at its western boundary and -41.9m (minus forty one point nine metres) OD (Ordnance Datum) or thereabouts at its eastern boundary, and the lower surface of the stratum of the sub-soil is at a level equivalent to -62.8m (minus sixty two point eight metres) OD (Ordnance Datum) or thereabout at its western boundary and -62.9m (minus sixty two point nine metres) OD (Ordnance Datum) or thereabouts at its eastern boundary. | 75 - London Borough of Tower Hamlets | EGL218237, EGL463988, EGL463567, EGL422836, EGL420771, EGL421377, EGL458451 | Transport for London |
| MNTLD/2072 | 94.4 square metres of a stratum of subsoil below hardstanding and underground car park (Basin Approach), and tunnel carrying public road and footways (Limehouse Link, A1203) where the upper surface of the stratum of the sub-soil is at a level equivalent to -41.8m (minus forty one point eight metres) OD (Ordnance Datum) or thereabout at its western boundary and -41.9m (minus forty one point nine metres) OD (Ordnance Datum) or thereabouts at its eastern boundary, and the lower surface of the stratum of the sub-soil is at a level equivalent to -62.8m (minus sixty two point eight metres) OD (Ordnance Datum) or thereabout at its western boundary and -62.9m (minus sixty two point nine metres) OD (Ordnance Datum) or thereabouts at its eastern boundary. | 77 - London Borough of Tower Hamlets | EGL218237, EGL463988 | Transport for London |
| MNTLD/2073 | 25.8 square metres of a stratum of subsoil below flats (127 to 157, Basin Approach) where the upper surface of the stratum of the sub-soil is at a level equivalent to -41.9m (minus forty one point nine metres) OD (Ordnance Datum) or thereabout at its western boundary and -41.9m (minus forty one point nine metres) OD (Ordnance Datum) or | 82 - London Borough of Tower Hamlets | EGL218237, EGL551677, EGL473278 | |

| | | | | |
|------------|-------------------------------------------------------------------------------------------------------------------------------------------------------------------------------------------------------------------------------------------------------------------------------------------------------------------------------------------------------------------------------------------------------------------------------------------------------------------------------------------------------------------------------------------------------------------------------------------------------------------------------------------------------------------------------------------------------------------|--------------------------------------|--------------------------------------------|----------------------|
| | thereabouts at its eastern boundary, and the lower surface of the stratum of the sub-soil is at a level equivalent to -62.9m (minus sixty two point nine metres) OD (Ordnance Datum) or thereabout at its western boundary and -62.9m (minus sixty two point nine metres) OD (Ordnance Datum) or thereabouts at its eastern boundary. | | | |
| MNTLD/2074 | 88.2 square metres of a stratum of subsoil below studio (270 to 271, Basin Approach) where the upper surface of the stratum of the sub-soil is at a level equivalent to -41.9m (minus forty one point nine metres) OD (Ordnance Datum) or thereabout at its western boundary and -41.9m (minus forty one point nine metres) OD (Ordnance Datum) or thereabouts at its eastern boundary, and the lower surface of the stratum of the sub-soil is at a level equivalent to -62.9m (minus sixty two point nine metres) OD (Ordnance Datum) or thereabout at its western boundary and -62.9m (minus sixty two point nine metres) OD (Ordnance Datum) or thereabouts at its eastern boundary. | 83 - London Borough of Tower Hamlets | EGL218237, AGL225865 | |
| MNTLD/2079 | 33.8 square metres of a stratum of subsoil below hardstanding and garden adjacent to building (6, Mill Place) where the upper surface of the stratum of the sub-soil is at a level equivalent to -41.9m (minus forty one point nine metres) OD (Ordnance Datum) or thereabout at its western boundary and -41.9m (minus forty one point nine metres) OD (Ordnance Datum) or thereabouts at its eastern boundary, and the lower surface of the stratum of the sub-soil is at a level equivalent to -62.9m (minus sixty two point nine metres) OD (Ordnance Datum) or thereabout at its western boundary and -62.9m (minus sixty two point nine metres) OD (Ordnance Datum) or thereabouts at its eastern boundary. | 89 - London Borough of Tower Hamlets | AGL256879, LN198943 | Transport for London |
| MNTLD/2081 | 40.2 square metres of a stratum of subsoil below private road and footways (Norway Place) where the upper surface of the stratum of the sub-soil is at a level equivalent to -41.9m (minus forty one point nine metres) OD (Ordnance Datum) or thereabout at its western boundary and -41.9m (minus forty one point nine metres) OD (Ordnance Datum) or thereabouts at its eastern boundary, and the lower surface of the stratum of the sub-soil is at a level equivalent to -62.9m (minus sixty two point nine metres) OD (Ordnance Datum) or thereabout at its western boundary and -62.9m (minus sixty two point nine metres) OD (Ordnance Datum) or thereabouts at its eastern boundary. | 92 - London Borough of Tower Hamlets | EGL373418, AGL256879 | Transport for London |
| MNTLD/2082 | 111.8 square metres of a stratum of subsoil below flats (10 to 24, Norway Place) where the upper surface of the stratum of the sub-soil is at a level equivalent to -41.9m (minus forty one point nine metres) OD (Ordnance Datum) or thereabout at its western boundary and -42m (minus forty two metres) OD (Ordnance Datum) or thereabouts at its eastern boundary, and the lower surface of the stratum of the sub-soil is at a level equivalent to -62.9m (minus sixty two point nine metres) OD (Ordnance Datum) or thereabout at its western boundary and -63m (minus sixty three metres) OD (Ordnance Datum) or thereabouts at its eastern | 93 - London Borough of Tower Hamlets | EGL373418, AGL256879, AGL275798, EGL387893 | Transport for London |

| | | | | |
|------------|-----------------------------------------------------------------------------------------------------------------------------------------------------------------------------------------------------------------------------------------------------------------------------------------------------------------------------------------------------------------------------------------------------------------------------------------------------------------------------------------------------------------------------------------------------------------------------------------------------------------------------------------------------|--------------------------------------|----------------------|----------------------|
| | boundary. | | | |
| MNTLD/2083 | 7.3 square metres of a stratum of subsoil below private road and footways (Norway Place) where the upper surface of the stratum of the sub-soil is at a level equivalent to -42m (minus forty two metres) OD (Ordnance Datum) or thereabout at its western boundary and -42m (minus forty two metres) OD (Ordnance Datum) or thereabouts at its eastern boundary, and the lower surface of the stratum of the sub-soil is at a level equivalent to -63m (minus sixty three metres) OD (Ordnance Datum) or thereabout at its western boundary and -63m (minus sixty three metres) OD (Ordnance Datum) or thereabouts at its eastern boundary. | 97 - London Borough of Tower Hamlets | EGL373418, AGL256879 | Transport for London |
| MNTLD/2084 | 73.6 square metres of a stratum of subsoil below flats (2a, Island Row) where the upper surface of the stratum of the sub-soil is at a level equivalent to -41.9m (minus forty one point nine metres) OD (Ordnance Datum) or thereabout at its western boundary and -42m (minus forty two metres) OD (Ordnance Datum) or thereabouts at its eastern boundary, and the lower surface of the stratum of the sub-soil is at a level equivalent to -62.9m (minus sixty two point nine metres) OD (Ordnance Datum) or thereabout at its western boundary and -63m (minus sixty three metres) OD (Ordnance Datum) or thereabouts at its eastern boundary. | 94 - London Borough of Tower Hamlets | EGL262986, AGL256879 | Transport for London |
| MNTLD/2085 | 57.2 square metres of a stratum of subsoil below flats (1a, Island Row) where the upper surface of the stratum of the sub-soil is at a level equivalent to -41.9m (minus forty one point nine metres) OD (Ordnance Datum) or thereabout at its western boundary and -42m (minus forty two metres) OD (Ordnance Datum) or thereabouts at its eastern boundary, and the lower surface of the stratum of the sub-soil is at a level equivalent to -62.9m (minus sixty two point nine metres) OD (Ordnance Datum) or thereabout at its western boundary and -63m (minus sixty three metres) OD (Ordnance Datum) or thereabouts at its eastern boundary. | 95 - London Borough of Tower Hamlets | EGL279995, AGL256879 | Transport for London |
| MNTLD/2086 | 28.7 square metres of a stratum of subsoil below flats (1, Island Row) where the upper surface of the stratum of the sub-soil is at a level equivalent to -42m (minus forty two metres) OD (Ordnance Datum) or thereabout at its western boundary and -42m (minus forty two metres) OD (Ordnance Datum) or thereabouts at its eastern boundary, and the lower surface of the stratum of the sub-soil is at a level equivalent to -62.9m (minus sixty two point nine metres) OD (Ordnance Datum) or thereabout at its western boundary and -62.9m (minus sixty two point nine metres) OD (Ordnance Datum) or thereabouts at its eastern boundary. | 96 - London Borough of Tower Hamlets | EGL511313, AGL256879 | Transport for London |
| MNTLD/2087 | 51.4 square metres of a stratum of subsoil below public road and footways (Norway Place) where the upper surface of the stratum of the sub-soil is at a level equivalent to -42m (minus forty two metres) OD (Ordnance Datum) or thereabout at its western boundary and -42m (minus forty two metres) OD (Ordnance Datum) or thereabouts at its eastern boundary, and the lower surface of the stratum of the sub-soil is at a level equivalent to -63m (minus sixty three metres) OD (Ordnance | 98 - London Borough of Tower Hamlets | AGL256879 | Transport for London |

| | | | | |
|------------|----------------------------------------------------------------------------------------------------------------------------------------------------------------------------------------------------------------------------------------------------------------------------------------------------------------------------------------------------------------------------------------------------------------------------------------------------------------------------------------------------------------------------------------------------------------------------------------------------------------------------------------------------|---------------------------------------|-------------------------------------------|----------------------|
| | Datum) or thereabout at its western boundary and -63m (minus sixty three metres) OD (Ordnance Datum) or thereabouts at its eastern boundary. | | | |
| MNTLD/2088 | 344.6 square metres of a stratum of subsoil below library (Limehouse District Public Library) where the upper surface of the stratum of the sub-soil is at a level equivalent to -42m (minus forty two metres) OD (Ordnance Datum) or thereabout at its western boundary and -42m (minus forty two metres) OD (Ordnance Datum) or thereabouts at its eastern boundary, and the lower surface of the stratum of the sub-soil is at a level equivalent to -63m (minus sixty three metres) OD (Ordnance Datum) or thereabout at its western boundary and -63m (minus sixty three metres) OD (Ordnance Datum) or thereabouts at its eastern boundary. | 99 - London Borough of Tower Hamlets | 339141, AGL256879, AGL255395 | Transport for London |
| MNTLD/2089 | 220.1 square metres of a stratum of subsoil below private road and footways (Wharf Lane) where the upper surface of the stratum of the sub-soil is at a level equivalent to -42m (minus forty two metres) OD (Ordnance Datum) or thereabout at its western boundary and -42m (minus forty two metres) OD (Ordnance Datum) or thereabouts at its eastern boundary, and the lower surface of the stratum of the sub-soil is at a level equivalent to -63m (minus sixty three metres) OD (Ordnance Datum) or thereabout at its western boundary and -63m (minus sixty three metres) OD (Ordnance Datum) or thereabouts at its eastern boundary. | 100 - London Borough of Tower Hamlets | NGL253094 | |
| MNTLD/2090 | 16.5 square metres of a stratum of subsoil below electricity substation (Norway Wharf) where the upper surface of the stratum of the sub-soil is at a level equivalent to -42m (minus forty two metres) OD (Ordnance Datum) or thereabout at its western boundary and -42m (minus forty two metres) OD (Ordnance Datum) or thereabouts at its eastern boundary, and the lower surface of the stratum of the sub-soil is at a level equivalent to -63m (minus sixty three metres) OD (Ordnance Datum) or thereabout at its western boundary and -63m (minus sixty three metres) OD (Ordnance Datum) or thereabouts at its eastern boundary. | 102 - London Borough of Tower Hamlets | EGL497477 | |
| MNTLD/2091 | 490 square metres of a stratum of subsoil below hardstanding (off Commercial Road) where the upper surface of the stratum of the sub-soil is at a level equivalent to -42m (minus forty two metres) OD (Ordnance Datum) or thereabout at its western boundary and -42.1m (minus forty two point one metres) OD (Ordnance Datum) or thereabouts at its eastern boundary, and the lower surface of the stratum of the sub-soil is at a level equivalent to -63m (minus sixty three metres) OD (Ordnance Datum) or thereabout at its western boundary and -63m (minus sixty three metres) OD (Ordnance Datum) or thereabouts at its eastern boundary. | 101 - London Borough of Tower Hamlets | NGL23117, AGL377298, AGL528203, AGL472969 | |
| MNTLD/2092 | 651.5 square metres of a stratum of subsoil below park and footways (Rectory Park) where the upper surface of the stratum of the sub-soil is at a level equivalent to -42m (minus forty two metres) OD (Ordnance Datum) or thereabout at its western boundary and -42.1m (minus forty two point one metres) OD (Ordnance Datum) or | 104 - London Borough of Tower Hamlets | NGL95866 | |

| | | | | |
|------------|---------------------------------------------------------------------------------------------------------------------------------------------------------------------------------------------------------------------------------------------------------------------------------------------------------------------------------------------------------------------------------------------------------------------------------------------------------------------------------------------------------------------------------------------------------------------------------------------------------------------------------------------------------------------------------------------------------------------------------------------------------------------------------------|---------------------------------------|--------------|----------------------|
| | thereabouts at its eastern boundary, and the lower surface of the stratum of the sub-soil is at a level equivalent to -63m (minus sixty three metres) OD (Ordnance Datum) or thereabout at its western boundary and -63.1m (minus sixty three point one metres) OD (Ordnance Datum) or thereabouts at its eastern boundary. | | | |
| MNTLD/2093 | 699.6 square metres of a stratum of subsoil below public road, footways and central reservation (Commercial Road, A13) where the upper surface of the stratum of the sub-soil is at a level equivalent to -42.1m (minus forty two point one metres) OD (Ordnance Datum) or thereabout at its western boundary and -42.2m (minus forty two point two metres) OD (Ordnance Datum) or thereabouts at its eastern boundary, and the lower surface of the stratum of the sub-soil is at a level equivalent to -63.1m (minus sixty three point one metres) OD (Ordnance Datum) or thereabout at its western boundary and -63.1m (minus sixty three point one metres) OD (Ordnance Datum) or thereabouts at its eastern boundary. | 105 - London Borough of Tower Hamlets | Unregistered | Transport for London |
| MNTLD/2094 | 2.1 square metres of a stratum of subsoil below bridge (Britannia Bridge) carrying public road, footway and central reservation (Commercial Road, A13) over canal (Limehouse Cut) where the upper surface of the stratum of the sub-soil is at a level equivalent to -42.2m (minus forty two point two metres) OD (Ordnance Datum) or thereabout at its western boundary and -42.2m (minus forty two point two metres) OD (Ordnance Datum) or thereabouts at its eastern boundary, and the lower surface of the stratum of the sub-soil is at a level equivalent to -63.1m (minus sixty three point one metres) OD (Ordnance Datum) or thereabout at its western boundary and -63.1m (minus sixty three point one metres) OD (Ordnance Datum) or thereabouts at its eastern boundary. | 107 - London Borough of Tower Hamlets | EGL526238 | Transport for London |
| MNTLD/2095 | 231.7 square metres of a stratum of subsoil below public road, footways and traffic island (Salmon Lane) where the upper surface of the stratum of the sub-soil is at a level equivalent to -42.1m (minus forty two point one metres) OD (Ordnance Datum) or thereabout at its western boundary and -42.2m (minus forty two point two metres) OD (Ordnance Datum) or thereabouts at its eastern boundary, and the lower surface of the stratum of the sub-soil is at a level equivalent to -63.1m (minus sixty three point one metres) OD (Ordnance Datum) or thereabout at its western boundary and -63.1m (minus sixty three point one metres) OD (Ordnance Datum) or thereabouts at its eastern boundary. | 106 - London Borough of Tower Hamlets | Unregistered | |
| MNTLD/2096 | 29 square metres of a stratum of subsoil below shrubbery (off Commercial Road) where the upper surface of the stratum of the sub-soil is at a level equivalent to -42.2m (minus forty two point two metres) OD (Ordnance Datum) or thereabout at its western boundary and -42.2m (minus forty two point two metres) OD (Ordnance Datum) or thereabouts at its eastern boundary, and the lower surface of the stratum of the sub-soil is at a level equivalent to -63.1m (minus sixty three point | 109 - London Borough of Tower Hamlets | Unregistered | |

| | | | | |
|------------|------------------------------------------------------------------------------------------------------------------------------------------------------------------------------------------------------------------------------------------------------------------------------------------------------------------------------------------------------------------------------------------------------------------------------------------------------------------------------------------------------------------------------------------------------------------------------------------------------------------------------------------------------------------------------------------------------------------|---------------------------------------|-----------|--|
| | one metres) OD (Ordnance Datum) or thereabout at its western boundary and -63.2m (minus sixty three point two metres) OD (Ordnance Datum) or thereabouts at its eastern boundary. | | | |
| MNTLD/2097 | 36.8 square metres of a stratum of subsoil below hardstanding, grassed areas and shrubbery (off Salmon Lane) where the upper surface of the stratum of the sub-soil is at a level equivalent to -42.2m (minus forty two point two metres) OD (Ordnance Datum) or thereabout at its western boundary and -42.2m (minus forty two point two metres) OD (Ordnance Datum) or thereabouts at its eastern boundary, and the lower surface of the stratum of the sub-soil is at a level equivalent to -63.1m (minus sixty three point one metres) OD (Ordnance Datum) or thereabout at its western boundary and -63.2m (minus sixty three point two metres) OD (Ordnance Datum) or thereabouts at its eastern boundary. | 108 - London Borough of Tower Hamlets | LN189962 | |
| MNTLD/2098 | 5019.7 square metres of a stratum of subsoil below canal and tow path (Limehouse Cut) where the upper surface of the stratum of the sub-soil is at a level equivalent to -42.5m (minus forty two point five metres) OD (Ordnance Datum) or thereabout at its western boundary and -42.5m (minus forty two point five metres) OD (Ordnance Datum) or thereabouts at its eastern boundary, and the lower surface of the stratum of the sub-soil is at a level equivalent to -63.1m (minus sixty three point one metres) OD (Ordnance Datum) or thereabout at its western boundary and -63.5m (minus sixty three point five metres) OD (Ordnance Datum) or thereabouts at its eastern boundary. | 110 - London Borough of Tower Hamlets | EGL526238 | |
| MNTLD/2099 | 29.1 square metres of a stratum of subsoil below footpath and hardstanding (Copenhagen Place) where the upper surface of the stratum of the sub-soil is at a level equivalent to -42.3m (minus forty two point three metres) OD (Ordnance Datum) or thereabout at its western boundary and -42.3m (minus forty two point three metres) OD (Ordnance Datum) or thereabouts at its eastern boundary, and the lower surface of the stratum of the sub-soil is at a level equivalent to -63.3m (minus sixty three point three metres) OD (Ordnance Datum) or thereabout at its western boundary and -63.3m (minus sixty three point three metres) OD (Ordnance Datum) or thereabouts at its eastern boundary. | 114 - London Borough of Tower Hamlets | 313379 | |
| MNTLD/2101 | 31.6 square metres of a stratum of subsoil below flats and car parking (Andersen's Wharf) where the upper surface of the stratum of the sub-soil is at a level equivalent to -42.4m (minus forty two point four metres) OD (Ordnance Datum) or thereabout at its western boundary and -42.4m (minus forty two point four metres) OD (Ordnance Datum) or thereabouts at its eastern boundary, and the lower surface of the stratum of the sub-soil is at a level equivalent to -63.3m (minus sixty three point three metres) OD (Ordnance Datum) or thereabout at its western boundary and -63.4m (minus sixty three point four metres) OD (Ordnance Datum) or thereabouts at its eastern | 117 - London Borough of Tower Hamlets | EGL200883 | |

| | | | | |
|------------|----------------------------------------------------------------------------------------------------------------------------------------------------------------------------------------------------------------------------------------------------------------------------------------------------------------------------------------------------------------------------------------------------------------------------------------------------------------------------------------------------------------------------------------------------------------------------------------------------------------------------------------------------------------------------------------------------------------|---------------------------------------|--------------|----------------------|
| | boundary. | | | |
| MNTLD/2102 | 125.7 square metres of a stratum of subsoil below hardstanding and private footway (Andersen's Wharf) where the upper surface of the stratum of the sub-soil is at a level equivalent to -42.4m (minus forty two point four metres) OD (Ordnance Datum) or thereabout at its western boundary and -42.4m (minus forty two point four metres) OD (Ordnance Datum) or thereabouts at its eastern boundary, and the lower surface of the stratum of the sub-soil is at a level equivalent to -63.3m (minus sixty three point three metres) OD (Ordnance Datum) or thereabout at its western boundary and -63.4m (minus sixty three point four metres) OD (Ordnance Datum) or thereabouts at its eastern boundary. | 118 - London Borough of Tower Hamlets | EGL200883 | |
| MNTLD/2103 | 0.4 square metres of a stratum of subsoil below land (off Limehouse Cut) where the upper surface of the stratum of the sub-soil is at a level equivalent to -42.5m (minus forty two point five metres) OD (Ordnance Datum) or thereabout at its western boundary and -42.5m (minus forty two point five metres) OD (Ordnance Datum) or thereabouts at its eastern boundary, and the lower surface of the stratum of the sub-soil is at a level equivalent to -63.4m (minus sixty three point four metres) OD (Ordnance Datum) or thereabout at its western boundary and -63.4m (minus sixty three point four metres) OD (Ordnance Datum) or thereabouts at its eastern boundary. | 123 - London Borough of Tower Hamlets | Unregistered | |
| MNTLD/2104 | 2.3 square metres of a stratum of subsoil below land (off Pixley Street) where the upper surface of the stratum of the sub-soil is at a level equivalent to -42.5m (minus forty two point five metres) OD (Ordnance Datum) or thereabout at its western boundary and -42.5m (minus forty two point five metres) OD (Ordnance Datum) or thereabouts at its eastern boundary, and the lower surface of the stratum of the sub-soil is at a level equivalent to -63.4m (minus sixty three point four metres) OD (Ordnance Datum) or thereabout at its western boundary and -63.4m (minus sixty three point four metres) OD (Ordnance Datum) or thereabouts at its eastern boundary. | 124 - London Borough of Tower Hamlets | NGL483172 | |
| MNTLD/2105 | 50.7 square metres of a stratum of subsoil below hardstanding and car parking (306, Burdett Road) where the upper surface of the stratum of the sub-soil is at a level equivalent to -42.5m (minus forty two point five metres) OD (Ordnance Datum) or thereabout at its western boundary and -42.5m (minus forty two point five metres) OD (Ordnance Datum) or thereabouts at its eastern boundary, and the lower surface of the stratum of the sub-soil is at a level equivalent to -63.4m (minus sixty three point four metres) OD (Ordnance Datum) or thereabout at its western boundary and -63.5m (minus sixty three point five metres) OD (Ordnance Datum) or thereabouts at its eastern boundary. | 125 - London Borough of Tower Hamlets | 253750 | |
| MNTLD/2106 | 293.1 square metres of a stratum of subsoil below public road and footways (Burdett Road, A1205) above canal and towpath (Limehouse Cut) where the upper surface of the stratum of the sub-soil is | 128 - London Borough of Tower Hamlets | EGL526238 | Transport for London |

| | | | | |
|------------|------------------------------------------------------------------------------------------------------------------------------------------------------------------------------------------------------------------------------------------------------------------------------------------------------------------------------------------------------------------------------------------------------------------------------------------------------------------------------------------------------------------------------------------------------------------------------------------------------------------------------------------------------------------------------------------------------------------------------------------------------|---------------------------------------|--------------|--|
| | at a level equivalent to -42.5m (minus forty two point five metres) OD (Ordnance Datum) or thereabout at its western boundary and -42.6m (minus forty two point six metres) OD (Ordnance Datum) or thereabouts at its eastern boundary, and the lower surface of the stratum of the sub-soil is at a level equivalent to -63.5m (minus sixty three point five metres) OD (Ordnance Datum) or thereabout at its western boundary and -63.5m (minus sixty three point five metres) OD (Ordnance Datum) or thereabouts at its eastern boundary. | | | |
| MNTLD/2109 | 7811.6 square metres of a stratum of subsoil below canal and tow path (Limehouse Cut) where the upper surface of the stratum of the sub-soil is at a level equivalent to -42.6m (minus forty two point six metres) OD (Ordnance Datum) or thereabout at its western boundary and -43.2m (minus forty three point two metres) OD (Ordnance Datum) or thereabouts at its eastern boundary, and the lower surface of the stratum of the sub-soil is at a level equivalent to -63.5m (minus sixty three point five metres) OD (Ordnance Datum) or thereabout at its western boundary and -64.2m (minus sixty four point two metres) OD (Ordnance Datum) or thereabouts at its eastern boundary. | 132 - London Borough of Tower Hamlets | AGL345258 | |
| MNTLD/2110 | 34.5 square metres of a stratum of subsoil below hardstanding (Dormers Court) where the upper surface of the stratum of the sub-soil is at a level equivalent to -42.6m (minus forty two point six metres) OD (Ordnance Datum) or thereabout at its western boundary and -42.7m (minus forty two point seven metres) OD (Ordnance Datum) or thereabouts at its eastern boundary, and the lower surface of the stratum of the sub-soil is at a level equivalent to -63.6m (minus sixty three point six metres) OD (Ordnance Datum) or thereabout at its western boundary and -63.7m (minus sixty three point seven metres) OD (Ordnance Datum) or thereabouts at its eastern boundary. | 136 - London Borough of Tower Hamlets | Unregistered | |
| MNTLD/2111 | 139.4 square metres of a stratum of subsoil below hardstanding, industrial unit, car parking and shrubbery (Thomas Road Industrial Estate) where the upper surface of the stratum of the sub-soil is at a level equivalent to -42.8m (minus forty two point eight metres) OD (Ordnance Datum) or thereabout at its western boundary and -42.9m (minus forty two point nine metres) OD (Ordnance Datum) or thereabouts at its eastern boundary, and the lower surface of the stratum of the sub-soil is at a level equivalent to -63.8m (minus sixty three point eight metres) OD (Ordnance Datum) or thereabout at its western boundary and -63.9m (minus sixty three point nine metres) OD (Ordnance Datum) or thereabouts at its eastern boundary. | 144 - London Borough of Tower Hamlets | NGL372271 | |
| MNTLD/2112 | 32.3 square metres of a stratum of subsoil below hardstanding and shrubbery (Thomas Road Industrial Estate) where the upper surface of the stratum of the sub-soil is at a level equivalent to -42.9m (minus forty two point nine metres) OD (Ordnance Datum) or thereabout at its western | 151 - London Borough of Tower Hamlets | NGL417763 | |

| | | | | |
|------------|-----------------------------------------------------------------------------------------------------------------------------------------------------------------------------------------------------------------------------------------------------------------------------------------------------------------------------------------------------------------------------------------------------------------------------------------------------------------------------------------------------------------------------------------------------------------------------------------------------------------------------------------------------------------------------------------------------|---------------------------------------|----------------------|--|
| | boundary and -42.9m (minus forty two point nine metres) OD (Ordnance Datum) or thereabouts at its eastern boundary, and the lower surface of the stratum of the sub-soil is at a level equivalent to -63.9m (minus sixty three point nine metres) OD (Ordnance Datum) or thereabout at its western boundary and -63.9m (minus sixty three point nine metres) OD (Ordnance Datum) or thereabouts at its eastern boundary. | | | |
| MNTLD/2113 | 100.7 square metres of a stratum of subsoil below hardstanding and shrubbery (Thomas Road Industrial Estate) where the upper surface of the stratum of the sub-soil is at a level equivalent to -43m (minus forty three metres) OD (Ordnance Datum) or thereabout at its western boundary and -43.1m (minus forty three point one metres) OD (Ordnance Datum) or thereabouts at its eastern boundary, and the lower surface of the stratum of the sub-soil is at a level equivalent to -64m (minus sixty four metres) OD (Ordnance Datum) or thereabout at its western boundary and -64m (minus sixty four metres) OD (Ordnance Datum) or thereabouts at its eastern boundary. | 151 - London Borough of Tower Hamlets | NGL417763 | |
| MNTLD/2114 | 222 square metres of a stratum of subsoil below hardstanding and shrubbery (off Ursula Gould Way) where the upper surface of the stratum of the sub-soil is at a level equivalent to -43.1m (minus forty three point one metres) OD (Ordnance Datum) or thereabout at its western boundary and -43.1m (minus forty three point one metres) OD (Ordnance Datum) or thereabouts at its eastern boundary, and the lower surface of the stratum of the sub-soil is at a level equivalent to -64m (minus sixty four metres) OD (Ordnance Datum) or thereabout at its western boundary and -64.1m (minus sixty four point one metres) OD (Ordnance Datum) or thereabouts at its eastern boundary. | 154 - London Borough of Tower Hamlets | EGL195505 | |
| MNTLD/2115 | 10.6 square metres of a stratum of subsoil below flats and basement car parking (Ingot Tower) where the upper surface of the stratum of the sub-soil is at a level equivalent to -43.1m (minus forty three point one metres) OD (Ordnance Datum) or thereabout at its western boundary and -43.1m (minus forty three point one metres) OD (Ordnance Datum) or thereabouts at its eastern boundary, and the lower surface of the stratum of the sub-soil is at a level equivalent to -64.1m (minus sixty four point one metres) OD (Ordnance Datum) or thereabout at its western boundary and -64.1m (minus sixty four point one metres) OD (Ordnance Datum) or thereabouts at its eastern boundary. | 155 - London Borough of Tower Hamlets | EGL195505, EGL575746 | |
| MNTLD/2116 | 30.5 square metres of a stratum of subsoil below flats and basement car parking (Ingot Tower) where the upper surface of the stratum of the sub-soil is at a level equivalent to -43.2m (minus forty three point two metres) OD (Ordnance Datum) or thereabout at its western boundary and -43.2m (minus forty three point two metres) OD (Ordnance Datum) or thereabouts at its eastern boundary, and the lower surface of the stratum of the sub-soil is at a level equivalent to -64.1m | 155 - London Borough of Tower Hamlets | EGL195505, EGL575746 | |

| | | | | |
|------------|----------------------------------------------------------------------------------------------------------------------------------------------------------------------------------------------------------------------------------------------------------------------------------------------------------------------------------------------------------------------------------------------------------------------------------------------------------------------------------------------------------------------------------------------------------------------------------------------------------------------------------------------------------------------------------------------------------------------------------------------------------|---------------------------------------|--------------|--|
| | (minus sixty four point one metres) OD (Ordnance Datum) or thereabout at its western boundary and -64.2m (minus sixty four point two metres) OD (Ordnance Datum) or thereabouts at its eastern boundary. | | | |
| MNTLD/2117 | 149.6 square metres of a stratum of subsoil below bridge (Bow Common Bridge) carrying public road (Upper North Street) above canal (Limehouse Cut) where the upper surface of the stratum of the sub-soil is at a level equivalent to -43.2m (minus forty three point two metres) OD (Ordnance Datum) or thereabout at its western boundary and -43.2m (minus forty three point two metres) OD (Ordnance Datum) or thereabouts at its eastern boundary, and the lower surface of the stratum of the sub-soil is at a level equivalent to -64.2m (minus sixty four point two metres) OD (Ordnance Datum) or thereabout at its western boundary and -64.2m (minus sixty four point two metres) OD (Ordnance Datum) or thereabouts at its eastern boundary. | 158 - London Borough of Tower Hamlets | AGL345258 | |
| MNTLD/2118 | 12.3 square metres of a stratum of subsoil below public road and footway (Upper North Street) where the upper surface of the stratum of the sub-soil is at a level equivalent to -43.2m (minus forty three point two metres) OD (Ordnance Datum) or thereabout at its western boundary and -43.2m (minus forty three point two metres) OD (Ordnance Datum) or thereabouts at its eastern boundary, and the lower surface of the stratum of the sub-soil is at a level equivalent to -64.2m (minus sixty four point two metres) OD (Ordnance Datum) or thereabout at its western boundary and -64.2m (minus sixty four point two metres) OD (Ordnance Datum) or thereabouts at its eastern boundary. | 156 - London Borough of Tower Hamlets | 338576 | |
| MNTLD/2119 | 92.1 square metres of a stratum of subsoil below bridge carrying public road and footways (Upper North Street) where the upper surface of the stratum of the sub-soil is at a level equivalent to -43.2m (minus forty three point two metres) OD (Ordnance Datum) or thereabout at its western boundary and -43.2m (minus forty three point two metres) OD (Ordnance Datum) or thereabouts at its eastern boundary, and the lower surface of the stratum of the sub-soil is at a level equivalent to -64.2m (minus sixty four point two metres) OD (Ordnance Datum) or thereabout at its western boundary and -64.2m (minus sixty four point two metres) OD (Ordnance Datum) or thereabouts at its eastern boundary. | 157 - London Borough of Tower Hamlets | Unregistered | |
| MNTLD/2120 | 3500.8 square metres of a stratum of subsoil below canal and tow path (Limehouse Cut) where the upper surface of the stratum of the sub-soil is at a level equivalent to -43.2m (minus forty three point two metres) OD (Ordnance Datum) or thereabout at its western boundary and -43.7m (minus forty three point seven metres) OD (Ordnance Datum) or thereabouts at its eastern boundary, and the lower surface of the stratum of the sub-soil is at a level equivalent to -64.2m (minus sixty four point two metres) OD (Ordnance Datum) or thereabout at its western boundary and | 161 - London Borough of Tower Hamlets | AGL345258 | |

| | | | | |
|------------|--------------------------------------------------------------------------------------------------------------------------------------------------------------------------------------------------------------------------------------------------------------------------------------------------------------------------------------------------------------------------------------------------------------------------------------------------------------------------------------------------------------------------------------------------------------------------------------------------------------------------------------------------------------------------------------------------------------------------------------------------|---------------------------------------|----------------------|--|
| | -64.7m (minus sixty four point seven metres) OD (Ordnance Datum) or thereabouts at its eastern boundary. | | | |
| MNTLD/2121 | 424.1 square metres of a stratum of subsoil below hardstanding (Craig Tower and Werner Court) where the upper surface of the stratum of the sub-soil is at a level equivalent to -43.2m (minus forty three point two metres) OD (Ordnance Datum) or thereabout at its western boundary and -43.3m (minus forty three point three metres) OD (Ordnance Datum) or thereabouts at its eastern boundary, and the lower surface of the stratum of the sub-soil is at a level equivalent to -64.2m (minus sixty four point two metres) OD (Ordnance Datum) or thereabout at its western boundary and -64.3m (minus sixty four point three metres) OD (Ordnance Datum) or thereabouts at its eastern boundary. | 160 - London Borough of Tower Hamlets | EGL233703 | |
| MNTLD/2122 | 10.1 square metres of a stratum of subsoil below flats (Werner Court) where the upper surface of the stratum of the sub-soil is at a level equivalent to -43.3m (minus forty three point three metres) OD (Ordnance Datum) or thereabout at its western boundary and -43.3m (minus forty three point three metres) OD (Ordnance Datum) or thereabouts at its eastern boundary, and the lower surface of the stratum of the sub-soil is at a level equivalent to -64.3m (minus sixty four point three metres) OD (Ordnance Datum) or thereabout at its western boundary and -64.3m (minus sixty four point three metres) OD (Ordnance Datum) or thereabouts at its eastern boundary. | 163 - London Borough of Tower Hamlets | EGL233703, AGL450211 | |
| MNTLD/2123 | 409.3 square metres of a stratum of subsoil below houses and flats, private road and footways (1 to 25, Invicta Close) where the upper surface of the stratum of the sub-soil is at a level equivalent to -43.3m (minus forty three point three metres) OD (Ordnance Datum) or thereabout at its western boundary and -43.4m (minus forty three point four metres) OD (Ordnance Datum) or thereabouts at its eastern boundary, and the lower surface of the stratum of the sub-soil is at a level equivalent to -64.3m (minus sixty four point three metres) OD (Ordnance Datum) or thereabout at its western boundary and -64.4m (minus sixty four point four metres) OD (Ordnance Datum) or thereabouts at its eastern boundary. | 164 - London Borough of Tower Hamlets | EGL456939 | |
| MNTLD/2124 | 247.1 square metres of a stratum of subsoil below private road and footways, car parking, hardstanding and shrubbery (Alphabet Square) where the upper surface of the stratum of the sub-soil is at a level equivalent to -43.4m (minus forty three point four metres) OD (Ordnance Datum) or thereabout at its western boundary and -43.5m (minus forty three point five metres) OD (Ordnance Datum) or thereabouts at its eastern boundary, and the lower surface of the stratum of the sub-soil is at a level equivalent to -64.4m (minus sixty four point four metres) OD (Ordnance Datum) or thereabout at its western boundary and -64.4m (minus sixty four point four metres) OD (Ordnance Datum) or thereabouts at its eastern boundary. | 165 - London Borough of Tower Hamlets | EGL435121 | |

| | | | | |
|------------|-------------------------------------------------------------------------------------------------------------------------------------------------------------------------------------------------------------------------------------------------------------------------------------------------------------------------------------------------------------------------------------------------------------------------------------------------------------------------------------------------------------------------------------------------------------------------------------------------------------------------------------------------------------------------------------------------------|---------------------------------------|-------------------------|--|
| | boundary. | | | |
| MNTLD/2125 | 16.9 square metres of a stratum of subsoil below house (20, Alphabet Square) where the upper surface of the stratum of the sub-soil is at a level equivalent to -43.4m (minus forty three point four metres) OD (Ordnance Datum) or thereabout at its western boundary and -43.4m (minus forty three point four metres) OD (Ordnance Datum) or thereabouts at its eastern boundary, and the lower surface of the stratum of the sub-soil is at a level equivalent to -64.4m (minus sixty four point four metres) OD (Ordnance Datum) or thereabout at its western boundary and -64.4m (minus sixty four point four metres) OD (Ordnance Datum) or thereabouts at its eastern boundary. | 167 - London Borough of Tower Hamlets | EGL435121, EGL262557 | |
| MNTLD/2126 | 177.3 square metres of a stratum of subsoil below industrial unit (Unit 3 Watts Grove) where the upper surface of the stratum of the sub-soil is at a level equivalent to -43.5m (minus forty three point five metres) OD (Ordnance Datum) or thereabout at its western boundary and -43.5m (minus forty three point five metres) OD (Ordnance Datum) or thereabouts at its eastern boundary, and the lower surface of the stratum of the sub-soil is at a level equivalent to -64.4m (minus sixty four point four metres) OD (Ordnance Datum) or thereabout at its western boundary and -64.5m (minus sixty four point five metres) OD (Ordnance Datum) or thereabouts at its eastern boundary. | 168 - London Borough of Tower Hamlets | EGL236819 | |
| MNTLD/2127 | 319 square metres of a stratum of subsoil below outbuildings and hardstanding (Anchor Wharf) where the upper surface of the stratum of the sub-soil is at a level equivalent to -43.5m (minus forty three point five metres) OD (Ordnance Datum) or thereabout at its western boundary and -43.6m (minus forty three point six metres) OD (Ordnance Datum) or thereabouts at its eastern boundary, and the lower surface of the stratum of the sub-soil is at a level equivalent to -64.5m (minus sixty four point five metres) OD (Ordnance Datum) or thereabout at its western boundary and -64.6m (minus sixty four point six metres) OD (Ordnance Datum) or thereabouts at its eastern boundary. | 169 - London Borough of Tower Hamlets | 432470 | |
| MNTLD/2128 | 209.8 square metres of a stratum of subsoil below footpath and hardstanding (Waters Edge Court) where the upper surface of the stratum of the sub-soil is at a level equivalent to -43.6m (minus forty three point six metres) OD (Ordnance Datum) or thereabout at its western boundary and -43.6m (minus forty three point six metres) OD (Ordnance Datum) or thereabouts at its eastern boundary, and the lower surface of the stratum of the sub-soil is at a level equivalent to -64.6m (minus sixty four point six metres) OD (Ordnance Datum) or thereabout at its western boundary and -64.6m (minus sixty four point six metres) OD (Ordnance Datum) or thereabouts at its eastern boundary. | 170 - London Borough of Tower Hamlets | NGL501123 | |
| MNTLD/2129 | 2.5 square metres of a stratum of subsoil below footpath and hardstanding (Waters Edge Court) where the upper surface of the stratum of the sub-soil is at a level equivalent to -43.6m (minus | 171 - London Borough of Tower Hamlets | NGL501123 | |

| | | | | |
|------------|-------------------------------------------------------------------------------------------------------------------------------------------------------------------------------------------------------------------------------------------------------------------------------------------------------------------------------------------------------------------------------------------------------------------------------------------------------------------------------------------------------------------------------------------------------------------------------------------------------------------------------------------------------------------------------------------------------------------------------------------------------------------------|---------------------------------------|--------------|--|
| | forty three point six metres) OD (Ordnance Datum) or thereabout at its western boundary and -43.6m (minus forty three point six metres) OD (Ordnance Datum) or thereabouts at its eastern boundary, and the lower surface of the stratum of the sub-soil is at a level equivalent to -64.6m (minus sixty four point six metres) OD (Ordnance Datum) or thereabout at its western boundary and -64.6m (minus sixty four point six metres) OD (Ordnance Datum) or thereabouts at its eastern boundary. | | | |
| MNTLD/2130 | 2.4 square metres of a stratum of subsoil below footpath and hardstanding (Waters Edge Court) where the upper surface of the stratum of the sub-soil is at a level equivalent to -43.6m (minus forty three point six metres) OD (Ordnance Datum) or thereabout at its western boundary and -43.6m (minus forty three point six metres) OD (Ordnance Datum) or thereabouts at its eastern boundary, and the lower surface of the stratum of the sub-soil is at a level equivalent to -64.6m (minus sixty four point six metres) OD (Ordnance Datum) or thereabout at its western boundary and -64.6m (minus sixty four point six metres) OD (Ordnance Datum) or thereabouts at its eastern boundary. | 171 - London Borough of Tower Hamlets | NGL501123 | |
| MNTLD/2131 | 240.7 square metres of a stratum of subsoil below hardstanding, grassed areas and shrubbery (Caspian Wharf) where the upper surface of the stratum of the sub-soil is at a level equivalent to -43.6m (minus forty three point six metres) OD (Ordnance Datum) or thereabout at its western boundary and -43.7m (minus forty three point seven metres) OD (Ordnance Datum) or thereabouts at its eastern boundary, and the lower surface of the stratum of the sub-soil is at a level equivalent to -64.6m (minus sixty four point six metres) OD (Ordnance Datum) or thereabout at its western boundary and -64.7m (minus sixty four point seven metres) OD (Ordnance Datum) or thereabouts at its eastern boundary. | 172 - London Borough of Tower Hamlets | LN39962 | |
| MNTLD/2132 | 186.9 square metres of a stratum of subsoil below bridge (Violet Road Bridge) carrying public road and footways (Violet Road) above canal (Limehouse Cut) where the upper surface of the stratum of the sub-soil is at a level equivalent to -43.7m (minus forty three point seven metres) OD (Ordnance Datum) or thereabout at its western boundary and -43.7m (minus forty three point seven metres) OD (Ordnance Datum) or thereabouts at its eastern boundary, and the lower surface of the stratum of the sub-soil is at a level equivalent to -64.7m (minus sixty four point seven metres) OD (Ordnance Datum) or thereabout at its western boundary and -64.7m (minus sixty four point seven metres) OD (Ordnance Datum) or thereabouts at its eastern boundary. | 174 - London Borough of Tower Hamlets | AGL347020 | |
| MNTLD/2133 | 70.9 square metres of a stratum of subsoil below public road and footways (Violet Road) where the upper surface of the stratum of the sub-soil is at a level equivalent to -43.7m (minus forty three point seven metres) OD (Ordnance Datum) or | 173 - London Borough of Tower Hamlets | Unregistered | |

| | | | | |
|------------|-------------------------------------------------------------------------------------------------------------------------------------------------------------------------------------------------------------------------------------------------------------------------------------------------------------------------------------------------------------------------------------------------------------------------------------------------------------------------------------------------------------------------------------------------------------------------------------------------------------------------------------------------------------------------------------------------------------|---------------------------------------|----------------------|---------------------------------|
| | thereabout at its western boundary and -43.7m (minus forty three point seven metres) OD (Ordnance Datum) or thereabouts at its eastern boundary, and the lower surface of the stratum of the sub-soil is at a level equivalent to -64.7m (minus sixty four point seven metres) OD (Ordnance Datum) or thereabout at its western boundary and -64.7m (minus sixty four point seven metres) OD (Ordnance Datum) or thereabouts at its eastern boundary. | | | |
| MNTLD/2134 | 1359.6 square metres of a stratum of subsoil below canal (Limehouse Cut) above where the upper surface of the stratum of the sub-soil is at a level equivalent to -43.8m (minus forty three point eight metres) OD (Ordnance Datum) or thereabout at its western boundary and -43.8m (minus forty three point eight metres) OD (Ordnance Datum) or thereabouts at its eastern boundary, and the lower surface of the stratum of the sub-soil is at a level equivalent to -64.7m (minus sixty four point seven metres) OD (Ordnance Datum) or thereabout at its western boundary and -64.8m (minus sixty four point eight metres) OD (Ordnance Datum) or thereabouts at its eastern boundary. | 176 - London Borough of Tower Hamlets | AGL347020 | |
| MNTLD/2135 | 195.5 square metres of a stratum of subsoil below hardstanding and garden (Seven Sea Gardens) where the upper surface of the stratum of the sub-soil is at a level equivalent to -43.7m (minus forty three point seven metres) OD (Ordnance Datum) or thereabout at its western boundary and -43.8m (minus forty three point eight metres) OD (Ordnance Datum) or thereabouts at its eastern boundary, and the lower surface of the stratum of the sub-soil is at a level equivalent to -64.7m (minus sixty four point seven metres) OD (Ordnance Datum) or thereabout at its western boundary and -64.8m (minus sixty four point eight metres) OD (Ordnance Datum) or thereabouts at its eastern boundary. | 175 - London Borough of Tower Hamlets | EGL566817 | |
| MNTLD/2136 | 37.6 square metres of a stratum of subsoil below hardstanding and garden (Seven Sea Gardens) where the upper surface of the stratum of the sub-soil is at a level equivalent to -43.8m (minus forty three point eight metres) OD (Ordnance Datum) or thereabout at its western boundary and -43.8m (minus forty three point eight metres) OD (Ordnance Datum) or thereabouts at its eastern boundary, and the lower surface of the stratum of the sub-soil is at a level equivalent to -64.8m (minus sixty four point eight metres) OD (Ordnance Datum) or thereabout at its western boundary and -64.8m (minus sixty four point eight metres) OD (Ordnance Datum) or thereabouts at its eastern boundary. | 175 - London Borough of Tower Hamlets | EGL566817 | |
| MNTLD/2137 | 142.8 square metres of a stratum of subsoil below railway and works (Docklands Light Railway - Devons Road and Langdon Park) above where the upper surface of the stratum of the sub-soil is at a level equivalent to -43.8m (minus forty three point eight metres) OD (Ordnance Datum) or thereabout at its western boundary and -43.8m (minus forty three point eight metres) OD | 178 - London Borough of Tower Hamlets | AGL347020, EGL340387 | Docklands Light Railway Limited |

| | | | | |
|------------|-------------------------------------------------------------------------------------------------------------------------------------------------------------------------------------------------------------------------------------------------------------------------------------------------------------------------------------------------------------------------------------------------------------------------------------------------------------------------------------------------------------------------------------------------------------------------------------------------------------------------------------------------------------------------------------------------|---------------------------------------|---------------------------------|--|
| | (Ordnance Datum) or thereabouts at its eastern boundary, and the lower surface of the stratum of the sub-soil is at a level equivalent to -64.8m (minus sixty four point eight metres) OD (Ordnance Datum) or thereabout at its western boundary and -64.8m (minus sixty four point eight metres) OD (Ordnance Datum) or thereabouts at its eastern boundary. | | | |
| MNTLD/2139 | 247.6 square metres of a stratum of subsoil below buildings and hardstanding (22, St. Andrews Way) where the upper surface of the stratum of the sub-soil is at a level equivalent to -43.9m (minus forty three point nine metres) OD (Ordnance Datum) or thereabout at its western boundary and -44m (minus forty four metres) OD (Ordnance Datum) or thereabouts at its eastern boundary, and the lower surface of the stratum of the sub-soil is at a level equivalent to -64.8m (minus sixty four point eight metres) OD (Ordnance Datum) or thereabout at its western boundary and -64.9m (minus sixty four point nine metres) OD (Ordnance Datum) or thereabouts at its eastern boundary. | 180 - London Borough of Tower Hamlets | EGL381499, AGL300376, EGL420585 | |
| MNTLD/2140 | 3912.3 square metres of a stratum of subsoil below canal and tow path (Limehouse Cut) where the upper surface of the stratum of the sub-soil is at a level equivalent to -44.1m (minus forty four point one metres) OD (Ordnance Datum) or thereabout at its western boundary and -44.4m (minus forty four point four metres) OD (Ordnance Datum) or thereabouts at its eastern boundary, and the lower surface of the stratum of the sub-soil is at a level equivalent to -65.1m (minus sixty five point one metres) OD (Ordnance Datum) or thereabout at its western boundary and -65.3m (minus sixty five point three metres) OD (Ordnance Datum) or thereabouts at its eastern boundary. | 179 - London Borough of Tower Hamlets | EGL519604 | |
| MNTLD/2141 | 153.5 square metres of a stratum of subsoil below building, car parking and hardstanding (21, St. Andrews Way) where the upper surface of the stratum of the sub-soil is at a level equivalent to -44m (minus forty four metres) OD (Ordnance Datum) or thereabout at its western boundary and -44m (minus forty four metres) OD (Ordnance Datum) or thereabouts at its eastern boundary, and the lower surface of the stratum of the sub-soil is at a level equivalent to -64.9m (minus sixty four point nine metres) OD (Ordnance Datum) or thereabout at its western boundary and -65m (minus sixty five metres) OD (Ordnance Datum) or thereabouts at its eastern boundary. | 181 - London Borough of Tower Hamlets | EGL369348 | |
| MNTLD/2142 | 116.5 square metres of a stratum of subsoil below building, car parking and hardstanding (off Brickfield Road) where the upper surface of the stratum of the sub-soil is at a level equivalent to -44m (minus forty four metres) OD (Ordnance Datum) or thereabout at its western boundary and -44.1m (minus forty four point one metres) OD (Ordnance Datum) or thereabouts at its eastern boundary, and the lower surface of the stratum of the sub-soil is at a level equivalent to -65m (minus sixty five metres) OD (Ordnance Datum) or | 182 - London Borough of Tower Hamlets | EGL234660 | |

| | | | | |
|------------|---------------------------------------------------------------------------------------------------------------------------------------------------------------------------------------------------------------------------------------------------------------------------------------------------------------------------------------------------------------------------------------------------------------------------------------------------------------------------------------------------------------------------------------------------------------------------------------------------------------------------------------------------------------------------------------------------------|---------------------------------------|-----------|--|
| | thereabout at its western boundary and -65m (minus sixty five metres) OD (Ordnance Datum) or thereabouts at its eastern boundary. | | | |
| MNTLD/2143 | 37.6 square metres of a stratum of subsoil below building and hardstanding (17, Towchester Road) where the upper surface of the stratum of the sub-soil is at a level equivalent to -44.1m (minus forty four point one metres) OD (Ordnance Datum) or thereabout at its western boundary and -44.2m (minus forty four point two metres) OD (Ordnance Datum) or thereabouts at its eastern boundary, and the lower surface of the stratum of the sub-soil is at a level equivalent to -65.1m (minus sixty five point one metres) OD (Ordnance Datum) or thereabout at its western boundary and -65.2m (minus sixty five point two metres) OD (Ordnance Datum) or thereabouts at its eastern boundary. | 185 - London Borough of Tower Hamlets | NGL142768 | |
| MNTLD/2144 | 13.3 square metres of a stratum of subsoil below hardstanding (17, Towchester Road) where the upper surface of the stratum of the sub-soil is at a level equivalent to -44.2m (minus forty four point two metres) OD (Ordnance Datum) or thereabout at its western boundary and -44.2m (minus forty four point two metres) OD (Ordnance Datum) or thereabouts at its eastern boundary, and the lower surface of the stratum of the sub-soil is at a level equivalent to -65.2m (minus sixty five point two metres) OD (Ordnance Datum) or thereabout at its western boundary and -65.2m (minus sixty five point two metres) OD (Ordnance Datum) or thereabouts at its eastern boundary. | 186 - London Borough of Tower Hamlets | NGL367851 | |
| MNTLD/2145 | 286.6 square metres of a stratum of subsoil below building and hardstanding (17, Towchester Road) where the upper surface of the stratum of the sub-soil is at a level equivalent to -44.2m (minus forty four point two metres) OD (Ordnance Datum) or thereabout at its western boundary and -44.3m (minus forty four point three metres) OD (Ordnance Datum) or thereabouts at its eastern boundary, and the lower surface of the stratum of the sub-soil is at a level equivalent to -65.2m (minus sixty five point two metres) OD (Ordnance Datum) or thereabout at its western boundary and -65.2m (minus sixty five point two metres) OD (Ordnance Datum) or thereabouts at its eastern boundary. | 185 - London Borough of Tower Hamlets | NGL142768 | |
| MNTLD/2146 | 13.6 square metres of a stratum of subsoil below hardstanding (4, Towchester Road) where the upper surface of the stratum of the sub-soil is at a level equivalent to -44.3m (minus forty four point three metres) OD (Ordnance Datum) or thereabout at its western boundary and -44.3m (minus forty four point three metres) OD (Ordnance Datum) or thereabouts at its eastern boundary, and the lower surface of the stratum of the sub-soil is at a level equivalent to -65.2m (minus sixty five point two metres) OD (Ordnance Datum) or thereabout at its western boundary and -65.3m (minus sixty five point three metres) OD (Ordnance Datum) or thereabouts at its eastern boundary. | 187 - London Borough of Tower Hamlets | NGL107473 | |

| | | | | |
|------------|-------------------------------------------------------------------------------------------------------------------------------------------------------------------------------------------------------------------------------------------------------------------------------------------------------------------------------------------------------------------------------------------------------------------------------------------------------------------------------------------------------------------------------------------------------------------------------------------------------------------------------------------------------------------------------------------------------------------------------------------------------------------------|---------------------------------------|----------------------|----------------------|
| MNTLD/2147 | 1.2 square metres of a stratum of subsoil below garage, car parking and hardstanding (Tweed House) where the upper surface of the stratum of the sub-soil is at a level equivalent to -44.3m (minus forty four point three metres) OD (Ordnance Datum) or thereabout at its western boundary and -44.3m (minus forty four point three metres) OD (Ordnance Datum) or thereabouts at its eastern boundary, and the lower surface of the stratum of the sub-soil is at a level equivalent to -65.3m (minus sixty five point three metres) OD (Ordnance Datum) or thereabout at its western boundary and -65.3m (minus sixty five point three metres) OD (Ordnance Datum) or thereabouts at its eastern boundary. | 188 - London Borough of Tower Hamlets | EGL519568, AGL279112 | |
| MNTLD/2149 | 471.6 square metres of a stratum of subsoil below public road and footways (Blackwall Tunnel Northern Approach, A12) above canal and tow path (Limehouse Cut) where the upper surface of the stratum of the sub-soil is at a level equivalent to -44.3m (minus forty four point three metres) OD (Ordnance Datum) or thereabout at its western boundary and -44.4m (minus forty four point four metres) OD (Ordnance Datum) or thereabouts at its eastern boundary, and the lower surface of the stratum of the sub-soil is at a level equivalent to -65.3m (minus sixty five point three metres) OD (Ordnance Datum) or thereabout at its western boundary and -65.4m (minus sixty five point four metres) OD (Ordnance Datum) or thereabouts at its eastern boundary. | 190 - London Borough of Tower Hamlets | EGL519604 | Transport for London |
| MNTLD/2150 | 28.4 square metres of a stratum of subsoil below public road, footways and central reservation (Blackwall Tunnel Northern Approach (A12) where the upper surface of the stratum of the sub-soil is at a level equivalent to -44.4m (minus forty four point four metres) OD (Ordnance Datum) or thereabout at its western boundary and -44.4m (minus forty four point four metres) OD (Ordnance Datum) or thereabouts at its eastern boundary, and the lower surface of the stratum of the sub-soil is at a level equivalent to -65.4m (minus sixty five point four metres) OD (Ordnance Datum) or thereabout at its western boundary and -65.4m (minus sixty five point four metres) OD (Ordnance Datum) or thereabouts at its eastern boundary. | 191 - London Borough of Tower Hamlets | Unregistered | Transport for London |
| MNTLD/2152 | 66 square metres of a stratum of subsoil below private road and public footpath (off Gillender Street) where the upper surface of the stratum of the sub-soil is at a level equivalent to -44.4m (minus forty four point four metres) OD (Ordnance Datum) or thereabout at its western boundary and -44.5m (minus forty four point five metres) OD (Ordnance Datum) or thereabouts at its eastern boundary, and the lower surface of the stratum of the sub-soil is at a level equivalent to -65.4m (minus sixty five point four metres) OD (Ordnance Datum) or thereabout at its western boundary and -65.4m (minus sixty five point four metres) OD (Ordnance Datum) or thereabouts at its eastern boundary. | 202 - London Borough of Tower Hamlets | AGL255187 | |

| | | | | |
|------------|-----------------------------------------------------------------------------------------------------------------------------------------------------------------------------------------------------------------------------------------------------------------------------------------------------------------------------------------------------------------------------------------------------------------------------------------------------------------------------------------------------------------------------------------------------------------------------------------------------------------------------------------------------------------------------------------------------------------------------------------------|---------------------------------------|--------------|--|
| MNTLD/2153 | 70.9 square metres of a stratum of subsoil below public road and footways (Gillender Street) above canal and tow path (Limehouse Cut) where the upper surface of the stratum of the sub-soil is at a level equivalent to -44.4m (minus forty four point four metres) OD (Ordnance Datum) or thereabout at its western boundary and -44.4m (minus forty four point four metres) OD (Ordnance Datum) or thereabouts at its eastern boundary, and the lower surface of the stratum of the sub-soil is at a level equivalent to -65.4m (minus sixty five point four metres) OD (Ordnance Datum) or thereabout at its western boundary and -65.4m (minus sixty five point four metres) OD (Ordnance Datum) or thereabouts at its eastern boundary. | 195 - London Borough of Tower Hamlets | EGL519604 | |
| MNTLD/2154 | 96.2 square metres of a stratum of subsoil below public road and footways (Gillender Street) above canal and tow path (Limehouse Cut) where the upper surface of the stratum of the sub-soil is at a level equivalent to -44.4m (minus forty four point four metres) OD (Ordnance Datum) or thereabout at its western boundary and -44.4m (minus forty four point four metres) OD (Ordnance Datum) or thereabouts at its eastern boundary, and the lower surface of the stratum of the sub-soil is at a level equivalent to -65.4m (minus sixty five point four metres) OD (Ordnance Datum) or thereabout at its western boundary and -65.4m (minus sixty five point four metres) OD (Ordnance Datum) or thereabouts at its eastern boundary. | 196 - London Borough of Tower Hamlets | AGL255187 | |
| MNTLD/2155 | 24.9 square metres of a stratum of subsoil below public road and footways (Gillender Street) where the upper surface of the stratum of the sub-soil is at a level equivalent to -44.4m (minus forty four point four metres) OD (Ordnance Datum) or thereabout at its western boundary and -44.5m (minus forty four point five metres) OD (Ordnance Datum) or thereabouts at its eastern boundary, and the lower surface of the stratum of the sub-soil is at a level equivalent to -65.4m (minus sixty five point four metres) OD (Ordnance Datum) or thereabout at its western boundary and -65.4m (minus sixty five point four metres) OD (Ordnance Datum) or thereabouts at its eastern boundary. | 197 - London Borough of Tower Hamlets | Unregistered | |
| MNTLD/2156 | 1110.5 square metres of a stratum of subsoil below canal and tow paths (Limehouse Cut) where the upper surface of the stratum of the sub-soil is at a level equivalent to -44.6m (minus forty four point six metres) OD (Ordnance Datum) or thereabout at its western boundary and -44.7m (minus forty four point seven metres) OD (Ordnance Datum) or thereabouts at its eastern boundary, and the lower surface of the stratum of the sub-soil is at a level equivalent to -65.5m (minus sixty five point five metres) OD (Ordnance Datum) or thereabout at its western boundary and -65.7m (minus sixty five point seven metres) OD (Ordnance Datum) or thereabouts at its eastern boundary. | 203 - London Borough of Tower Hamlets | AGL255187 | |
| MNTLD/2157 | 149.8 square metres of a stratum of subsoil below land and advertising hoarding (off Gillender Street) where the upper surface of the stratum of the sub-soil is at a level equivalent to -44.4m | 204 - London Borough of Tower Hamlets | NGL441478 | |

| | | | | |
|------------|----------------------------------------------------------------------------------------------------------------------------------------------------------------------------------------------------------------------------------------------------------------------------------------------------------------------------------------------------------------------------------------------------------------------------------------------------------------------------------------------------------------------------------------------------------------------------------------------------------------------------------------------------------------------------------------------------------------------------------------------------|---------------------------------------|----------------------|--|
| | (minus forty four point four metres) OD (Ordnance Datum) or thereabout at its western boundary and -44.5m (minus forty four point five metres) OD (Ordnance Datum) or thereabouts at its eastern boundary, and the lower surface of the stratum of the sub-soil is at a level equivalent to -65.4m (minus sixty five point four metres) OD (Ordnance Datum) or thereabout at its western boundary and -65.4m (minus sixty five point four metres) OD (Ordnance Datum) or thereabouts at its eastern boundary. | | | |
| MNTLD/2158 | 65 square metres of a stratum of subsoil below electricity substation (66017), off Gillender Street) where the upper surface of the stratum of the sub-soil is at a level equivalent to -44.5m (minus forty four point five metres) OD (Ordnance Datum) or thereabout at its western boundary and -44.5m (minus forty four point five metres) OD (Ordnance Datum) or thereabouts at its eastern boundary, and the lower surface of the stratum of the sub-soil is at a level equivalent to -65.4m (minus sixty five point four metres) OD (Ordnance Datum) or thereabout at its western boundary and -65.4m (minus sixty five point four metres) OD (Ordnance Datum) or thereabouts at its eastern boundary. | 205 - London Borough of Tower Hamlets | NGL441478, EGL513369 | |
| MNTLD/2159 | 1535 square metres of a stratum of subsoil below land, hardstanding and advertising hoarding (off Gillender Street) where the upper surface of the stratum of the sub-soil is at a level equivalent to -44.5m (minus forty four point five metres) OD (Ordnance Datum) or thereabout at its western boundary and -44.6m (minus forty four point six metres) OD (Ordnance Datum) or thereabouts at its eastern boundary, and the lower surface of the stratum of the sub-soil is at a level equivalent to -65.4m (minus sixty five point four metres) OD (Ordnance Datum) or thereabout at its western boundary and -65.6m (minus sixty five point six metres) OD (Ordnance Datum) or thereabouts at its eastern boundary. | 206 - London Borough of Tower Hamlets | NGL441478 | |
| MNTLD/2160 | 25.1 square metres of a stratum of subsoil below structure (Bow Locks), hardstanding, footbridge and public footpath (Channelsea Path) where the upper surface of the stratum of the sub-soil is at a level equivalent to -44.7m (minus forty four point seven metres) OD (Ordnance Datum) or thereabout at its western boundary and -44.7m (minus forty four point seven metres) OD (Ordnance Datum) or thereabouts at its eastern boundary, and the lower surface of the stratum of the sub-soil is at a level equivalent to -65.7m (minus sixty five point seven metres) OD (Ordnance Datum) or thereabout at its western boundary and -65.7m (minus sixty five point seven metres) OD (Ordnance Datum) or thereabouts at its eastern boundary. | 207 - London Borough of Tower Hamlets | AGL255187 | |
| MNTLD/2161 | 698.7 square metres of a stratum of subsoil below river (River Lea), foreshore and bed thereof where the upper surface of the stratum of the sub-soil is at a level equivalent to -44.7m (minus forty four point seven metres) OD (Ordnance Datum) or thereabout at its western boundary and -44.8m | 1 - London Borough of Newham | EGL504192 | |

| | | | | |
|------------|----------------------------------------------------------------------------------------------------------------------------------------------------------------------------------------------------------------------------------------------------------------------------------------------------------------------------------------------------------------------------------------------------------------------------------------------------------------------------------------------------------------------------------------------------------------------------------------------------------------------------------------------------------------------------------------------------------------------------------------------------------------------------------|------------------------------|---------------------------------|--|
| | (minus forty four point eight metres) OD (Ordnance Datum) or thereabouts at its eastern boundary, and the lower surface of the stratum of the sub-soil is at a level equivalent to -65.7m (minus sixty five point seven metres) OD (Ordnance Datum) or thereabout at its western boundary and -65.7m (minus sixty five point seven metres) OD (Ordnance Datum) or thereabouts at its eastern boundary. | | | |
| MNTLD/2162 | 182.3 square metres of a stratum of subsoil below tow path (Lee Valley Walk), hardstanding and land (south of Bromley Bridge) where the upper surface of the stratum of the sub-soil is at a level equivalent to -44.8m (minus forty four point eight metres) OD (Ordnance Datum) or thereabout at its western boundary and -44.8m (minus forty four point eight metres) OD (Ordnance Datum) or thereabouts at its eastern boundary, and the lower surface of the stratum of the sub-soil is at a level equivalent to -65.7m (minus sixty five point seven metres) OD (Ordnance Datum) or thereabout at its western boundary and -65.7m (minus sixty five point seven metres) OD (Ordnance Datum) or thereabouts at its eastern boundary. | 3 - London Borough of Newham | EGL504192, AGL301550 | |
| MNTLD/2163 | 40.8 square metres of a stratum of subsoil below river (River Lea), foreshore, banks and bed thereof where the upper surface of the stratum of the sub-soil is at a level equivalent to -44.8m (minus forty four point eight metres) OD (Ordnance Datum) or thereabout at its western boundary and -44.8m (minus forty four point eight metres) OD (Ordnance Datum) or thereabouts at its eastern boundary, and the lower surface of the stratum of the sub-soil is at a level equivalent to -65.7m (minus sixty five point seven metres) OD (Ordnance Datum) or thereabout at its western boundary and -65.7m (minus sixty five point seven metres) OD (Ordnance Datum) or thereabouts at its eastern boundary. | 7 - London Borough of Newham | EGL504192 | |
| MNTLD/2165 | 24.6 square metres of a stratum of subsoil below bridge carrying private road and footways (Twelvetrees Crescent) above river (River Lee), foreshore and bed thereof where the upper surface of the stratum of the sub-soil is at a level equivalent to -44.8m (minus forty four point eight metres) OD (Ordnance Datum) or thereabout at its western boundary and -44.8m (minus forty four point eight metres) OD (Ordnance Datum) or thereabouts at its eastern boundary, and the lower surface of the stratum of the sub-soil is at a level equivalent to -65.7m (minus sixty five point seven metres) OD (Ordnance Datum) or thereabout at its western boundary and -65.7m (minus sixty five point seven metres) OD (Ordnance Datum) or thereabouts at its eastern boundary. | 2 - London Borough of Newham | EGL504192, EGL512707 | |
| MNTLD/2166 | 140.6 square metres of a stratum of subsoil below bridge carrying private road and footways (Twelvetrees Crescent) above tow path (Lee Valley Walk) where the upper surface of the stratum of the sub-soil is at a level equivalent to -44.8m (minus forty four point eight metres) OD | 4 - London Borough of Newham | AGL301553, EGL504192, EGL512707 | |

| | | | | |
|------------|----------------------------------------------------------------------------------------------------------------------------------------------------------------------------------------------------------------------------------------------------------------------------------------------------------------------------------------------------------------------------------------------------------------------------------------------------------------------------------------------------------------------------------------------------------------------------------------------------------------------------------------------------------------------------------------------------------------------------------------------------------|-------------------------------|-----------|--|
| | (Ordnance Datum) or thereabouts at its western boundary and -44.8m (minus forty four point eight metres) OD (Ordnance Datum) or thereabouts at its eastern boundary, and the lower surface of the stratum of the sub-soil is at a level equivalent to -65.7m (minus sixty five point seven metres) OD (Ordnance Datum) or thereabouts at its western boundary and -65.7m (minus sixty five point seven metres) OD (Ordnance Datum) or thereabouts at its eastern boundary. | | | |
| MNTLD/2168 | 11.9 square metres of a stratum of subsoil below tow path (Lee Valley Walk), hardstanding and land to the south of bridge (Bromley Bridge) where the upper surface of the stratum of the sub-soil is at a level equivalent to -44.8m (minus forty four point eight metres) OD (Ordnance Datum) or thereabouts at its western boundary and -44.8m (minus forty four point eight metres) OD (Ordnance Datum) or thereabouts at its eastern boundary, and the lower surface of the stratum of the sub-soil is at a level equivalent to -65.7m (minus sixty five point seven metres) OD (Ordnance Datum) or thereabouts at its western boundary and -65.7m (minus sixty five point seven metres) OD (Ordnance Datum) or thereabouts at its eastern boundary. | 6 - London Borough of Newham | EGL504192 | |
| MNTLD/2172 | 275.5 square metres of a stratum of subsoil below shrubbery, hardstanding and land, adjacent to gas works (Bromley Gas Works) where the upper surface of the stratum of the sub-soil is at a level equivalent to -44.8m (minus forty four point eight metres) OD (Ordnance Datum) or thereabouts at its western boundary and -44.9m (minus forty four point nine metres) OD (Ordnance Datum) or thereabouts at its eastern boundary, and the lower surface of the stratum of the sub-soil is at a level equivalent to -65.8m (minus sixty five point eight metres) OD (Ordnance Datum) or thereabouts at its western boundary and -65.9m (minus sixty five point nine metres) OD (Ordnance Datum) or thereabouts at its eastern boundary. | 13 - London Borough of Newham | EGL417833 | |
| MNTLD/2173 | 446.8 square metres of a stratum of subsoil below gas pipes, hardstanding and shrubbery, adjacent to gas works (Bromley Gas Works) where the upper surface of the stratum of the sub-soil is at a level equivalent to -44.9m (minus forty four point nine metres) OD (Ordnance Datum) or thereabouts at its western boundary and -44.9m (minus forty four point nine metres) OD (Ordnance Datum) or thereabouts at its eastern boundary, and the lower surface of the stratum of the sub-soil is at a level equivalent to -65.8m (minus sixty five point eight metres) OD (Ordnance Datum) or thereabouts at its western boundary and -65.9m (minus sixty five point nine metres) OD (Ordnance Datum) or thereabouts at its eastern boundary. | 14 - London Borough of Newham | TGL475853 | |
| MNTLD/2174 | 3133.8 square metres of a stratum of subsoil below shrubbery, hardstanding and land, adjacent to gas works (Bromley Gas Works) where the upper surface of the stratum of the sub-soil is at a level equivalent to -44.9m (minus forty four point nine metres) OD (Ordnance Datum) or thereabouts at its western boundary and -45.1m (minus forty | 13 - London Borough of Newham | EGL417833 | |

| | | | | |
|------------|--------------------------------------------------------------------------------------------------------------------------------------------------------------------------------------------------------------------------------------------------------------------------------------------------------------------------------------------------------------------------------------------------------------------------------------------------------------------------------------------------------------------------------------------------------------------------------------------------------------------------------------------------------------------------------------------------------------------------------------------------------------------------------|-------------------------------|---------------------|--|
| | five point one metres) OD (Ordnance Datum) or thereabouts at its eastern boundary, and the lower surface of the stratum of the sub-soil is at a level equivalent to -65.9m (minus sixty five point nine metres) OD (Ordnance Datum) or thereabout at its western boundary and -66.1m (minus sixty six point one metres) OD (Ordnance Datum) or thereabouts at its eastern boundary. | | | |
| MNTLD/2177 | 267.8 square metres of a stratum of subsoil below river bank (Channelsea River) where the upper surface of the stratum of the sub-soil is at a level equivalent to -45.1m (minus forty five point one metres) OD (Ordnance Datum) or thereabout at its western boundary and -45.2m (minus forty five point two metres) OD (Ordnance Datum) or thereabouts at its eastern boundary, and the lower surface of the stratum of the sub-soil is at a level equivalent to -66.1m (minus sixty six point one metres) OD (Ordnance Datum) or thereabout at its western boundary and -66.2m (minus sixty six point two metres) OD (Ordnance Datum) or thereabouts at its eastern boundary. | 17 - London Borough of Newham | EGL374498 | |
| MNTLD/2180 | 1068.1 square metres of a stratum of subsoil below buildings (Three Mills Studio), hardstanding, car parking and shrubbery, adjacent to river (Prescott Channel) where the upper surface of the stratum of the sub-soil is at a level equivalent to -45.2m (minus forty five point two metres) OD (Ordnance Datum) or thereabout at its western boundary and -45.3m (minus forty five point three metres) OD (Ordnance Datum) or thereabouts at its eastern boundary, and the lower surface of the stratum of the sub-soil is at a level equivalent to -66.2m (minus sixty six point two metres) OD (Ordnance Datum) or thereabout at its western boundary and -66.3m (minus sixty six point three metres) OD (Ordnance Datum) or thereabouts at its eastern boundary. | 20 - London Borough of Newham | NGL23661, EGL484281 | |
| MNTLD/2182 | 385.8 square metres of a stratum of subsoil below hardstanding, public footway and shrubbery adjacent to river (Prescott Channel) and buildings (Three Mills Studio) where the upper surface of the stratum of the sub-soil is at a level equivalent to -45.3m (minus forty five point three metres) OD (Ordnance Datum) or thereabout at its western boundary and -45.3m (minus forty five point three metres) OD (Ordnance Datum) or thereabouts at its eastern boundary, and the lower surface of the stratum of the sub-soil is at a level equivalent to -66.3m (minus sixty six point three metres) OD (Ordnance Datum) or thereabout at its western boundary and -66.3m (minus sixty six point three metres) OD (Ordnance Datum) or thereabouts at its eastern boundary. | 21 - London Borough of Newham | NGL23661, EGL484281 | |
| MNTLD/2185 | 1078.9 square metres of a stratum of subsoil below hardstanding and land (Abbey Mills Pumping Station) where the upper surface of the stratum of the sub-soil is at a level equivalent to -45.4m (minus forty five point four metres) OD (Ordnance Datum) or thereabout at its western boundary and -45.5m (minus forty five point five metres) OD (Ordnance Datum) or thereabouts at its eastern boundary, and the lower surface of the | 24 - London Borough of Newham | TGL345034 | |

| | | | | |
|------------|-------------------------------------------------------------------------------------------------------------------------------------------------------------------------------------------------------------------------------------------------------------------------------------------------------------------------------------------------------------------------------------------------------------------------------------------------------------------------------------------------------------------------------------------------------------------------------------------------------------------------------------------------------------------------------------------------------------------------------------------------------------------------------|---------------------------------------|----------------------|--|
| | stratum of the sub-soil is at a level equivalent to -66.3m (minus sixty six point three metres) OD (Ordnance Datum) or thereabout at its western boundary and -66.5m (minus sixty six point five metres) OD (Ordnance Datum) or thereabouts at its eastern boundary. | | | |
| MNTLD/2194 | 34.6 square metres of a stratum of subsoil below hardstanding, public footway and shrubbery adjacent to river (Prescott Channel) and buildings (Three Mills Studio) where the upper surface of the stratum of the sub-soil is at a level equivalent to -45.3m (minus forty five point three metres) OD (Ordnance Datum) or thereabout at its western boundary and -45.3m (minus forty five point three metres) OD (Ordnance Datum) or thereabouts at its eastern boundary, and the lower surface of the stratum of the sub-soil is at a level equivalent to -66.3m (minus sixty six point three metres) OD (Ordnance Datum) or thereabout at its western boundary and -66.3m (minus sixty six point three metres) OD (Ordnance Datum) or thereabouts at its eastern boundary. | 21 - London Borough of Newham | TGL458503, EGL484281 | |
| MNTLD/2195 | 54.3 square metres of a stratum of subsoil below canal and tow path (Limehouse Cut) where the upper surface of the stratum of the sub-soil is at a level equivalent to -42.9m (minus forty two point nine metres) OD (Ordnance Datum) or thereabout at its western boundary and -43m (minus forty three metres) OD (Ordnance Datum) or thereabouts at its eastern boundary, and the lower surface of the stratum of the sub-soil is at a level equivalent to -63.9m (minus sixty three point nine metres) OD (Ordnance Datum) or thereabout at its western boundary and -64m (minus sixty four metres) OD (Ordnance Datum) or thereabouts at its eastern boundary. | 132 - London Borough of Tower Hamlets | EGL526347 | |
| MNTLD/2196 | 20.3 square metres of a stratum of subsoil below hardstanding and public footpath (Canoe Walk) where the upper surface of the stratum of the sub-soil is at a level equivalent to -42.2m (minus forty two point two metres) OD (Ordnance Datum) or thereabout at its western boundary and -42.2m (minus forty two point two metres) OD (Ordnance Datum) or thereabouts at its eastern boundary, and the lower surface of the stratum of the sub-soil is at a level equivalent to -63.2m (minus sixty three point two metres) OD (Ordnance Datum) or thereabout at its western boundary and -63.2m (minus sixty three point two metres) OD (Ordnance Datum) or thereabouts at its eastern boundary. | 108 - London Borough of Tower Hamlets | Unregistered | |
| MNTLD/2197 | 1.3 square metres of a stratum of subsoil below hardstanding (off Salmon Lane) where the upper surface of the stratum of the sub-soil is at a level equivalent to -42.2m (minus forty two point two metres) OD (Ordnance Datum) or thereabout at its western boundary and -42.2m (minus forty two point two metres) OD (Ordnance Datum) or thereabouts at its eastern boundary, and the lower surface of the stratum of the sub-soil is at a level equivalent to -63.1m (minus sixty three point one metres) OD (Ordnance Datum) or thereabout at its western boundary and -63.1m (minus sixty | 108 - London Borough of Tower Hamlets | Unregistered | |

| | | | | |
|------------|---------------------------------------------------------------------------------------------------------------------------------------------------------------------------------------------------------------------------------------------------------------------------------------------------------------------------------------------------------------------------------------------------------------------------------------------------------------------------------------------------------------------------------------------------------------------------------------------------------------------------------------------------------------------------------------------------------------------------------------------------|---------------------------------------|--------------|--|
| | three point one metres) OD (Ordnance Datum) or thereabouts at its eastern boundary. | | | |
| MNTLD/2201 | 2.2 square metres of a stratum of subsoil below footway adjacent to river (Prescott Channel) and buildings (Three Mills Studio) where the upper surface of the stratum of the sub-soil is at a level equivalent to -45.3m (minus forty five point three metres) OD (Ordnance Datum) or thereabout at its western boundary and -45.3m (minus forty five point three metres) OD (Ordnance Datum) or thereabouts at its eastern boundary, and the lower surface of the stratum of the sub-soil is at a level equivalent to -66.3m (minus sixty six point three metres) OD (Ordnance Datum) or thereabout at its western boundary and -66.3m (minus sixty six point three metres) OD (Ordnance Datum) or thereabouts at its eastern boundary. | 21 - London Borough of Newham | EGL484281 | |
| MNTLD/2202 | 1.9 square metres of a stratum of subsoil below structure (Bow Locks), hardstanding, footbridge and public footpath (Channelsea Path) where the upper surface of the stratum of the sub-soil is at a level equivalent to -44.7m (minus forty four point seven metres) OD (Ordnance Datum) or thereabout at its western boundary and -44.7m (minus forty four point seven metres) OD (Ordnance Datum) or thereabouts at its eastern boundary, and the lower surface of the stratum of the sub-soil is at a level equivalent to -65.7m (minus sixty five point seven metres) OD (Ordnance Datum) or thereabout at its western boundary and -65.7m (minus sixty five point seven metres) OD (Ordnance Datum) or thereabouts at its eastern boundary. | 207 - London Borough of Tower Hamlets | EGL504192 | |
| MNTLD/2203 | 64.8 square metres of a stratum of subsoil below canal and tow paths (Limehouse Cut) where the upper surface of the stratum of the sub-soil is at a level equivalent to -44.6m (minus forty four point six metres) OD (Ordnance Datum) or thereabout at its western boundary and -44.7m (minus forty four point seven metres) OD (Ordnance Datum) or thereabouts at its eastern boundary, and the lower surface of the stratum of the sub-soil is at a level equivalent to -65.6m (minus sixty five point six metres) OD (Ordnance Datum) or thereabout at its western boundary and -65.7m (minus sixty five point seven metres) OD (Ordnance Datum) or thereabouts at its eastern boundary. | 203 - London Borough of Tower Hamlets | Unregistered | |
| MNTLD/2204 | 80.5 square metres of a stratum of subsoil below canal and tow paths (Limehouse Cut) where the upper surface of the stratum of the sub-soil is at a level equivalent to -44.6m (minus forty four point six metres) OD (Ordnance Datum) or thereabout at its western boundary and -44.7m (minus forty four point seven metres) OD (Ordnance Datum) or thereabouts at its eastern boundary, and the lower surface of the stratum of the sub-soil is at a level equivalent to -65.6m (minus sixty five point six metres) OD (Ordnance Datum) or thereabout at its western boundary and -65.6m (minus sixty five point six metres) OD (Ordnance Datum) or thereabouts at its eastern boundary. | 203 - London Borough of Tower Hamlets | 452416 | |

| | | | | |
|------------|---------------------------------------------------------------------------------------------------------------------------------------------------------------------------------------------------------------------------------------------------------------------------------------------------------------------------------------------------------------------------------------------------------------------------------------------------------------------------------------------------------------------------------------------------------------------------------------------------------------------------------------------------------------------------------------------------------------------------------------------------|---------------------------------------|--------------|----------------------|
| MNTLD/2205 | 147.2 square metres of a stratum of subsoil below canal and tow paths (Limehouse Cut) where the upper surface of the stratum of the sub-soil is at a level equivalent to -44.5m (minus forty four point five metres) OD (Ordnance Datum) or thereabout at its western boundary and -44.6m (minus forty four point six metres) OD (Ordnance Datum) or thereabouts at its eastern boundary, and the lower surface of the stratum of the sub-soil is at a level equivalent to -65.5m (minus sixty five point five metres) OD (Ordnance Datum) or thereabout at its western boundary and -65.6m (minus sixty five point six metres) OD (Ordnance Datum) or thereabouts at its eastern boundary. | 203 - London Borough of Tower Hamlets | 452416 | |
| MNTLD/2206 | 10.9 square metres of a stratum of subsoil below public road and footways (Gillender Street) above canal and tow path (Limehouse Cut) where the upper surface of the stratum of the sub-soil is at a level equivalent to -44.4m (minus forty four point four metres) OD (Ordnance Datum) or thereabout at its western boundary and -44.4m (minus forty four point four metres) OD (Ordnance Datum) or thereabouts at its eastern boundary, and the lower surface of the stratum of the sub-soil is at a level equivalent to -65.4m (minus sixty five point four metres) OD (Ordnance Datum) or thereabout at its western boundary and -65.4m (minus sixty five point four metres) OD (Ordnance Datum) or thereabouts at its eastern boundary. | 196 - London Borough of Tower Hamlets | LN5855 | |
| MNTLD/2207 | 2.7 square metres of a stratum of subsoil below public road and footways (Gillender Street) where the upper surface of the stratum of the sub-soil is at a level equivalent to -44.4m (minus forty four point four metres) OD (Ordnance Datum) or thereabout at its western boundary and -44.4m (minus forty four point four metres) OD (Ordnance Datum) or thereabouts at its eastern boundary, and the lower surface of the stratum of the sub-soil is at a level equivalent to -65.4m (minus sixty five point four metres) OD (Ordnance Datum) or thereabout at its western boundary and -65.4m (minus sixty five point four metres) OD (Ordnance Datum) or thereabouts at its eastern boundary. | 194 - London Borough of Tower Hamlets | EGL519604 | |
| MNTLD/2208 | 21.7 square metres of a stratum of subsoil below public road, footways and central reservation (Blackwall Tunnel Northern Approach (A12) where the upper surface of the stratum of the sub-soil is at a level equivalent to -44.4m (minus forty four point four metres) OD (Ordnance Datum) or thereabout at its western boundary and -44.4m (minus forty four point four metres) OD (Ordnance Datum) or thereabouts at its eastern boundary, and the lower surface of the stratum of the sub-soil is at a level equivalent to -65.3m (minus sixty five point three metres) OD (Ordnance Datum) or thereabout at its western boundary and -65.4m (minus sixty five point four metres) OD (Ordnance Datum) or thereabouts at its eastern boundary. | 191 - London Borough of Tower Hamlets | EGL519604 | Transport for London |
| MNTLD/2211 | 0.1 square metres of a stratum of subsoil below private road and footways (Tweed Walk) where the upper surface of the stratum of the sub-soil is | 189 - London Borough of Tower Hamlets | Unregistered | |

| | | | | |
|------------|----------------------------------------------------------------------------------------------------------------------------------------------------------------------------------------------------------------------------------------------------------------------------------------------------------------------------------------------------------------------------------------------------------------------------------------------------------------------------------------------------------------------------------------------------------------------------------------------------------------------------------------------------------------------------------------------------------------------------------------------------|---------------------------------------|-------------------------|----------------------|
| | at a level equivalent to -44.3m (minus forty four point three metres) OD (Ordnance Datum) or thereabout at its western boundary and -44.3m (minus forty four point three metres) OD (Ordnance Datum) or thereabouts at its eastern boundary, and the lower surface of the stratum of the sub-soil is at a level equivalent to -65.3m (minus sixty five point three metres) OD (Ordnance Datum) or thereabout at its western boundary and -65.3m (minus sixty five point three metres) OD (Ordnance Datum) or thereabouts at its eastern boundary. | | | |
| MNTLD/2212 | 28.9 square metres of a stratum of subsoil below public road, footways and central reservation (Blackwall Tunnel Northern Approach (A12) where the upper surface of the stratum of the sub-soil is at a level equivalent to -44.3m (minus forty four point three metres) OD (Ordnance Datum) or thereabout at its western boundary and -44.4m (minus forty four point four metres) OD (Ordnance Datum) or thereabouts at its eastern boundary, and the lower surface of the stratum of the sub-soil is at a level equivalent to -65.3m (minus sixty five point three metres) OD (Ordnance Datum) or thereabout at its western boundary and -65.4m (minus sixty five point four metres) OD (Ordnance Datum) or thereabouts at its eastern boundary. | 189 - London Borough of Tower Hamlets | EGL519604 | Transport for London |
| MNTLD/2216 | 3221.9 square metres of a stratum of subsoil below canal and tow path (Limehouse Cut) where the upper surface of the stratum of the sub-soil is at a level equivalent to -43.8m (minus forty three point two metres) OD (Ordnance Datum) or thereabout at its western boundary and -44.1m (minus forty four point one metres) OD (Ordnance Datum) or thereabouts at its eastern boundary, and the lower surface of the stratum of the sub-soil is at a level equivalent to -64.8m (minus sixty four point eight metres) OD (Ordnance Datum) or thereabout at its western boundary and -65.1m (minus sixty five point one metres) OD (Ordnance Datum) or thereabouts at its eastern boundary. | 179 - London Borough of Tower Hamlets | AGL347020 | |
| MNTLD/2218 | 178.9 square metres of a stratum of subsoil below canal (Limehouse Cut) where the upper surface of the stratum of the sub-soil is at a level equivalent to -43.8m (minus forty three point eight metres) OD (Ordnance Datum) or thereabout at its western boundary and -43.8m (minus forty three point eight metres) OD (Ordnance Datum) or thereabouts at its eastern boundary, and the lower surface of the stratum of the sub-soil is at a level equivalent to -64.8m (minus sixty four point eight metres) OD (Ordnance Datum) or thereabout at its western boundary and -64.8m (minus sixty four point eight metres) OD (Ordnance Datum) or thereabouts at its eastern boundary. | 176 - London Borough of Tower Hamlets | EGL526380 | |
| MNTLD/2220 | 678 square metres of a stratum of subsoil below marina (Limehouse Basin) and tunnel carrying public road and footways (Limehouse Link, A1203) where the upper surface of the stratum of the sub-soil is at a level equivalent to -41.7m (minus forty one point seven metres) OD (Ordnance | 71 - London Borough of Tower Hamlets | EGL218237, AGL444161 | |

| | | | | |
|------------|------------------------------------------------------------------------------------------------------------------------------------------------------------------------------------------------------------------------------------------------------------------------------------------------------------------------------------------------------------------------------------------------------------------------------------------------------------------------------------------------------------------------------------------------------------------------------------------------------------------------------------------------------------------------------------------------------------|---------------------------------------|--------------|--|
| | Datum) or thereabout at its western boundary and -41.8m (minus forty one point eight metres) OD (Ordnance Datum) or thereabouts at its eastern boundary, and the lower surface of the stratum of the sub-soil is at a level equivalent to -62.6m (minus sixty two point six metres) OD (Ordnance Datum) or thereabout at its western boundary and -62.8m (minus sixty two point eight metres) OD (Ordnance Datum) or thereabouts at its eastern boundary. | | | |
| MNTLD/2221 | 0.3 square metres of a stratum of subsoil below private road and public footpath (Navigation Road) where the upper surface of the stratum of the sub-soil is at a level equivalent to -44.4m (minus forty four point four metres) OD (Ordnance Datum) or thereabout at its western boundary and -44.4m (minus forty four point four metres) OD (Ordnance Datum) or thereabouts at its eastern boundary, and the lower surface of the stratum of the sub-soil is at a level equivalent to -65.4m (minus sixty five point four metres) OD (Ordnance Datum) or thereabout at its western boundary and -65.4m (minus sixty five point four metres) OD (Ordnance Datum) or thereabouts at its eastern boundary. | 202 - London Borough of Tower Hamlets | Unregistered | |
| MNTLD/2222 | 770.8 square metres of a stratum of subsoil below canal and tow paths (Limehouse Cut) where the upper surface of the stratum of the sub-soil is at a level equivalent to -44.4m (minus forty four point four metres) OD (Ordnance Datum) or thereabout at its western boundary and -44.5m (minus forty four point five metres) OD (Ordnance Datum) or thereabouts at its eastern boundary, and the lower surface of the stratum of the sub-soil is at a level equivalent to -65.4m (minus sixty five point four metres) OD (Ordnance Datum) or thereabout at its western boundary and -65.5m (minus sixty five point five metres) OD (Ordnance Datum) or thereabouts at its eastern boundary. | 203 - London Borough of Tower Hamlets | AGL255187 | |
| MNTLD/2223 | 661 square metres of a stratum of subsoil below canal and tow paths (Limehouse Cut) where the upper surface of the stratum of the sub-soil is at a level equivalent to -44.7m (minus forty four point seven metres) OD (Ordnance Datum) or thereabout at its western boundary and -44.7m (minus forty four point seven metres) OD (Ordnance Datum) or thereabouts at its eastern boundary, and the lower surface of the stratum of the sub-soil is at a level equivalent to -65.7m (minus sixty five point seven metres) OD (Ordnance Datum) or thereabout at its western boundary and -65.7m (minus sixty five point seven metres) OD (Ordnance Datum) or thereabouts at its eastern boundary. | 203 - London Borough of Tower Hamlets | EGL504192 | |
| MNTLD/2225 | 34.1 square metres of a stratum of subsoil below hardstanding, grassed areas and shrubbery (off Salmon Lane) where the upper surface of the stratum of the sub-soil is at a level equivalent to -42.2m (minus forty two point two metres) OD (Ordnance Datum) or thereabout at its western boundary and -42.2m (minus forty two point two metres) OD (Ordnance Datum) or thereabouts at its eastern boundary, and the lower surface of the | 108 - London Borough of Tower Hamlets | LN63434 | |

| | | | | |
|------------|-------------------------------------------------------------------------------------------------------------------------------------------------------------------------------------------------------------------------------------------------------------------------------------------------------------------------------------------------------------------------------------------------------------------------------------------------------------------------------------------------------------------------------------------------------------------------------------------------------------------------------------------------------------------------------------------------------------------|---------------------------------------|-------------------------|--|
| | stratum of the sub-soil is at a level equivalent to -63.1m (minus sixty three point one metres) OD (Ordnance Datum) or thereabout at its western boundary and -63.1m (minus sixty three point one metres) OD (Ordnance Datum) or thereabouts at its eastern boundary. | | | |
| MNTLD/2226 | 155.4 square metres of a stratum of subsoil below hardstanding, grassed areas and shrubbery (off Salmon Lane) where the upper surface of the stratum of the sub-soil is at a level equivalent to -42.2m (minus forty two point two metres) OD (Ordnance Datum) or thereabout at its western boundary and -42.2m (minus forty two point two metres) OD (Ordnance Datum) or thereabouts at its eastern boundary, and the lower surface of the stratum of the sub-soil is at a level equivalent to -63.1m (minus sixty three point one metres) OD (Ordnance Datum) or thereabout at its western boundary and -63.2m (minus sixty three point two metres) OD (Ordnance Datum) or thereabouts at its eastern boundary. | 108 - London Borough of Tower Hamlets | LN57918 | |
| MNTLD/2228 | 4.9 square metres of a stratum of subsoil below public footways (Violet Road) where the upper surface of the stratum of the sub-soil is at a level equivalent to -43.7m (minus forty three point seven metres) OD (Ordnance Datum) or thereabout at its western boundary and -43.7m (minus forty three point seven metres) OD (Ordnance Datum) or thereabouts at its eastern boundary, and the lower surface of the stratum of the sub-soil is at a level equivalent to -64.7m (minus sixty four point seven metres) OD (Ordnance Datum) or thereabout at its western boundary and -64.7m (minus sixty four point seven metres) OD (Ordnance Datum) or thereabouts at its eastern boundary. | 173 - London Borough of Tower Hamlets | LN39962 | |
| MNTLD/2230 | 132.9 square metres of a stratum of subsoil below hardstanding and shrubbery (off Gillender Street) where the upper surface of the stratum of the sub-soil is at a level equivalent to -44.5m (minus forty four point five metres) OD (Ordnance Datum) or thereabout at its western boundary and -44.7m (minus forty four point seven metres) OD (Ordnance Datum) or thereabouts at its eastern boundary, and the lower surface of the stratum of the sub-soil is at a level equivalent to -65.5m (minus sixty five point five metres) OD (Ordnance Datum) or thereabout at its western boundary and -65.6m (minus sixty five point six metres) OD (Ordnance Datum) or thereabouts at its eastern boundary. | 206 - London Borough of Tower Hamlets | NGL441478 | |
| MNTLD/2232 | 28.2 square metres of a stratum of subsoil below river (Prescott Channel) foreshore, banks and bed thereof, public footway and land south of pumping station (Abbey Mills Pumping Station) where the upper surface of the stratum of the sub-soil is at a level equivalent to -45.3m (minus forty five point three metres) OD (Ordnance Datum) or thereabout at its western boundary and -45.3m (minus forty five point three metres) OD (Ordnance Datum) or thereabouts at its eastern boundary, and the lower surface of the stratum of the sub-soil is at a level equivalent to -66.3m | 22 - London Borough of Newham | TGL458503, EGL484281 | |

| | | | | |
|------------|-------------------------------------------------------------------------------------------------------------------------------------------------------------------------------------------------------------------------------------------------------------------------------------------------------------------------------------------------------------------------------------------------------------------------------------------------------------------------------------------------------------------------------------------------------------------------------------------------------------------------------------------------------------------------------------------------------------------------------------------------------|---------------------------------------|---------------------------------|----------------------|
| | (minus sixty six point three metres) OD (Ordnance Datum) or thereabout at its western boundary and -66.3m (minus sixty six point three metres) OD (Ordnance Datum) or thereabouts at its eastern boundary. | | | |
| MNTLD/2234 | 44.5 square metres of a stratum of subsoil below public road and footways (Gillender Street) where the upper surface of the stratum of the sub-soil is at a level equivalent to -44.4m (minus forty four point four metres) OD (Ordnance Datum) or thereabout at its western boundary and -44.4m (minus forty four point four metres) OD (Ordnance Datum) or thereabouts at its eastern boundary, and the lower surface of the stratum of the sub-soil is at a level equivalent to -65.4m (minus sixty five point four metres) OD (Ordnance Datum) or thereabout at its western boundary and -65.4m (minus sixty five point four metres) OD (Ordnance Datum) or thereabouts at its eastern boundary. | 197 - London Borough of Tower Hamlets | LN5855 | |
| MNTLD/2240 | 77.5 square metres of a stratum of subsoil below hardstanding and underground car park (Basin Approach) where the upper surface of the stratum of the sub-soil is at a level equivalent to -42.5m (minus forty two point five metres) OD (Ordnance Datum) or thereabout at its western boundary and -42.5m (minus forty two point five metres) OD (Ordnance Datum) or thereabouts at its eastern boundary, and the lower surface of the stratum of the sub-soil is at a level equivalent to -62.3m (minus sixty two point three metres) OD (Ordnance Datum) or thereabout at its western boundary and -62.3m (minus sixty two point three metres) OD (Ordnance Datum) or thereabouts at its eastern boundary. | 77 - London Borough of Tower Hamlets | EGL218237 | |
| MNTLD/2241 | 165.5 square metres of a stratum of subsoil below marina (Limehouse Basin) and tunnel carrying public road and footways (Limehouse Link, A1203) where the upper surface of the stratum of the sub-soil is at a level equivalent to -41.8m (minus forty one point eight metres) OD (Ordnance Datum) or thereabout at its western boundary and -41.9m (minus forty one point nine metres) OD (Ordnance Datum) or thereabouts at its eastern boundary, and the lower surface of the stratum of the sub-soil is at a level equivalent to -62.8m (minus sixty two point eight metres) OD (Ordnance Datum) or thereabout at its western boundary and -62.9m (minus sixty two point nine metres) OD (Ordnance Datum) or thereabouts at its eastern boundary. | 71 - London Borough of Tower Hamlets | EGL218237, EGL463988, AGL444161 | Transport for London |
| MNTLD/2245 | 7.3 square metres of a stratum of subsoil below hardstanding, grassed areas and shrubbery (off Salmon Lane) where the upper surface of the stratum of the sub-soil is at a level equivalent to -42.2m (minus forty two point two metres) OD (Ordnance Datum) or thereabout at its western boundary and -42.2m (minus forty two point two metres) OD (Ordnance Datum) or thereabouts at its eastern boundary, and the lower surface of the stratum of the sub-soil is at a level equivalent to -63.1m (minus sixty three point one metres) OD (Ordnance Datum) or thereabout at its western | 109 - London Borough of Tower Hamlets | LN57918 | |

| | | | | |
|------------|--------------------------------------------------------------------------------------------------------------------------------------------------------------------------------------------------------------------------------------------------------------------------------------------------------------------------------------------------------------------------------------------------------------------------------------------------------------------------------------------------------------------------------------------------------------------------------------------------------------------------------------------------------------------------------------------------------------------------|---------------------------------------|--------------|----------------------|
| | boundary and -63.2m (minus sixty three point two metres) OD (Ordnance Datum) or thereabouts at its eastern boundary. | | | |
| MNTLD/2246 | 0.5 square metres of a stratum of subsoil below canal and tow path (Limehouse Cut) where the upper surface of the stratum of the sub-soil is at a level equivalent to -42.2m (minus forty two point two metres) OD (Ordnance Datum) or thereabout at its western boundary and -42.2m (minus forty two point two metres) OD (Ordnance Datum) or thereabouts at its eastern boundary, and the lower surface of the stratum of the sub-soil is at a level equivalent to -63.1m (minus sixty three point one metres) OD (Ordnance Datum) or thereabout at its western boundary and -63.2m (minus sixty three point two metres) OD (Ordnance Datum) or thereabouts at its eastern boundary. | 109 - London Borough of Tower Hamlets | EGL526238 | |
| MNTLD/2247 | 0.2 square metres of a stratum of subsoil below public road, footways and central reservation (Commercial Road, A13) where the upper surface of the stratum of the sub-soil is at a level equivalent to -42.2m (minus forty two point two metres) OD (Ordnance Datum) or thereabout at its western boundary and -42.2m (minus forty two point two metres) OD (Ordnance Datum) or thereabouts at its eastern boundary, and the lower surface of the stratum of the sub-soil is at a level equivalent to -63.1m (minus sixty three point one metres) OD (Ordnance Datum) or thereabout at its western boundary and -63.1m (minus sixty three point one metres) OD (Ordnance Datum) or thereabouts at its eastern boundary. | 107 - London Borough of Tower Hamlets | Unregistered | Transport for London |
| MNTLD/2252 | 99.3 square metres of a stratum of subsoil below public road and footways (Norway Place) where the upper surface of the stratum of the sub-soil is at a level equivalent to -42m (minus forty two metres) OD (Ordnance Datum) or thereabout at its western boundary and -42m (minus forty two metres) OD (Ordnance Datum) or thereabouts at its eastern boundary, and the lower surface of the stratum of the sub-soil is at a level equivalent to -63m (minus sixty three metres) OD (Ordnance Datum) or thereabout at its western boundary and -63m (minus sixty three metres) OD (Ordnance Datum) or thereabouts at its eastern boundary. | 98 - London Borough of Tower Hamlets | AGL256879 | Transport for London |
| MNTLD/2253 | 1850.7 square metres of a stratum of subsoil below canal and tow path (Limehouse Cut) where the upper surface of the stratum of the sub-soil is at a level equivalent to -43.2m (minus forty three point two metres) OD (Ordnance Datum) or thereabout at its western boundary and -43.7m (minus forty three point seven metres) OD (Ordnance Datum) or thereabouts at its eastern boundary, and the lower surface of the stratum of the sub-soil is at a level equivalent to -64.2m (minus sixty four point two metres) OD (Ordnance Datum) or thereabout at its western boundary and -64.7m (minus sixty four point seven metres) OD (Ordnance Datum) or thereabouts at its eastern boundary. | 132 - London Borough of Tower Hamlets | EGL503938 | |
| MNTLD/2254 | 2621.7 square metres of a stratum of subsoil below canal and tow path (Limehouse Cut) where the upper surface of the stratum of the sub-soil is | 161 - London Borough of Tower Hamlets | AGL347020 | |

| | | | | |
|------------|-------------------------------------------------------------------------------------------------------------------------------------------------------------------------------------------------------------------------------------------------------------------------------------------------------------------------------------------------------------------------------------------------------------------------------------------------------------------------------------------------------------------------------------------------------------------------------------------------------------------------------------------------------------------------------------------------------|---------------------------------------|----------------------|--|
| | at a level equivalent to -43.2m (minus forty three point two metres) OD (Ordnance Datum) or thereabout at its western boundary and -43.7m (minus forty three point seven metres) OD (Ordnance Datum) or thereabouts at its eastern boundary, and the lower surface of the stratum of the sub-soil is at a level equivalent to -64.2m (minus sixty four point two metres) OD (Ordnance Datum) or thereabout at its western boundary and -64.7m (minus sixty four point seven metres) OD (Ordnance Datum) or thereabouts at its eastern boundary. | | | |
| MNTLD/2255 | 9 square metres of a stratum of subsoil below hardstanding (Dormers Court) where the upper surface of the stratum of the sub-soil is at a level equivalent to -42.6m (minus forty two point six metres) OD (Ordnance Datum) or thereabout at its western boundary and -42.7m (minus forty two point seven metres) OD (Ordnance Datum) or thereabouts at its eastern boundary, and the lower surface of the stratum of the sub-soil is at a level equivalent to -63.6m (minus sixty three point six metres) OD (Ordnance Datum) or thereabout at its western boundary and -63.7m (minus sixty three point seven metres) OD (Ordnance Datum) or thereabouts at its eastern boundary. | 136 - London Borough of Tower Hamlets | EGL294361 | |
| MNTLD/2256 | 40.8 square metres of a stratum of subsoil below hardstanding and shrubbery (off Ursula Gould Way) where the upper surface of the stratum of the sub-soil is at a level equivalent to -43.1m (minus forty three point one metres) OD (Ordnance Datum) or thereabout at its western boundary and -43.1m (minus forty three point one metres) OD (Ordnance Datum) or thereabouts at its eastern boundary, and the lower surface of the stratum of the sub-soil is at a level equivalent to -64m (minus sixty four metres) OD (Ordnance Datum) or thereabout at its western boundary and -64.1m (minus sixty four point one metres) OD (Ordnance Datum) or thereabouts at its eastern boundary. | 132 - London Borough of Tower Hamlets | EGL195505 | |
| MNTLD/2257 | 4.9 square metres of a stratum of subsoil below hardstanding (Craig Tower and Werner Court) where the upper surface of the stratum of the sub-soil is at a level equivalent to -43.2m (minus forty three point two metres) OD (Ordnance Datum) or thereabout at its western boundary and -43.3m (minus forty three point three metres) OD (Ordnance Datum) or thereabouts at its eastern boundary, and the lower surface of the stratum of the sub-soil is at a level equivalent to -64.2m (minus sixty four point two metres) OD (Ordnance Datum) or thereabout at its western boundary and -64.3m (minus sixty four point three metres) OD (Ordnance Datum) or thereabouts at its eastern boundary. | 160 - London Borough of Tower Hamlets | EGL233703, AGL450211 | |
| MNTLD/2258 | 1.2 square metres of a stratum of subsoil below flats (Werner Court) where the upper surface of the stratum of the sub-soil is at a level equivalent to -43.3m (minus forty three point three metres) OD (Ordnance Datum) or thereabout at its western boundary and -43.3m (minus forty three point three metres) OD (Ordnance Datum) or | 163 - London Borough of Tower Hamlets | EGL233703 | |

| | | | | |
|------------|----------------------------------------------------------------------------------------------------------------------------------------------------------------------------------------------------------------------------------------------------------------------------------------------------------------------------------------------------------------------------------------------------------------------------------------------------------------------------------------------------------------------------------------------------------------------------------------------------------------------------------------------------------------------------------------------------------------------------------------------------------------------------------------|--------------------------------------|----------------------|-------------------------------------------------------|
| | thereabouts at its eastern boundary, and the lower surface of the stratum of the sub-soil is at a level equivalent to -64.3m (minus sixty four point three metres) OD (Ordnance Datum) or thereabout at its western boundary and -64.3m (minus sixty four point three metres) OD (Ordnance Datum) or thereabouts at its eastern boundary. | | | |
| MNTLD/2270 | 98.8 square metres of a stratum of subsoil below public road and footways (Island Row) where the upper surface of the stratum of the sub-soil is at a level equivalent to -41.9m (minus forty one point nine metres) OD (Ordnance Datum) or thereabout at its western boundary and -41.9m (minus forty one point nine metres) OD (Ordnance Datum) or thereabouts at its eastern boundary, and the lower surface of the stratum of the sub-soil is at a level equivalent to -62.9m (minus sixty two point nine metres) OD (Ordnance Datum) or thereabout at its western boundary and -62.9m (minus sixty two point nine metres) OD (Ordnance Datum) or thereabouts at its eastern boundary. | 88 - London Borough of Tower Hamlets | AGL256879 | Transport for London, Docklands Light Railway Limited |
| MNTLD/2271 | 3.3 square metres of a stratum of subsoil below viaduct carrying railway and works (Docklands Light Railway - Limehouse and Westferry), over public road and footways (Island Row) where the upper surface of the stratum of the sub-soil is at a level equivalent to -41.9m (minus forty one point nine metres) OD (Ordnance Datum) or thereabout at its western boundary and -41.9m (minus forty one point nine metres) OD (Ordnance Datum) or thereabouts at its eastern boundary, and the lower surface of the stratum of the sub-soil is at a level equivalent to -62.9m (minus sixty two point nine metres) OD (Ordnance Datum) or thereabout at its western boundary and -62.9m (minus sixty two point nine metres) OD (Ordnance Datum) or thereabouts at its eastern boundary. | 87 - London Borough of Tower Hamlets | AGL256879, EGL340304 | Transport for London, Docklands Light Railway Limited |
| ABMPS/2002 | 565.6 square metres of a stratum of subsoil below hardstanding and land (Abbey Mills Pumping Station) where the upper surface of the stratum of the sub-soil is at a level equivalent to -46.1m (minus forty six point one metres) OD (Ordnance Datum) or thereabout at its western boundary and -46.1m (minus forty six point one metres) OD (Ordnance Datum) or thereabouts at its eastern boundary, and the lower surface of the stratum of the sub-soil is at a level equivalent to -65.9m (minus sixty five point nine metres) OD (Ordnance Datum) or thereabout at its western boundary and -65.8m (minus sixty five point eight metres) OD (Ordnance Datum) or thereabouts at its eastern boundary. | 29 - London Borough of Newham | TGL345034 | |

EXECUTION PAGE

The Common seal of **Thames Water**)
Utilities Limited was affixed in the)
presence of:)



Jacqueline Sandison
Senior Legal Counsel

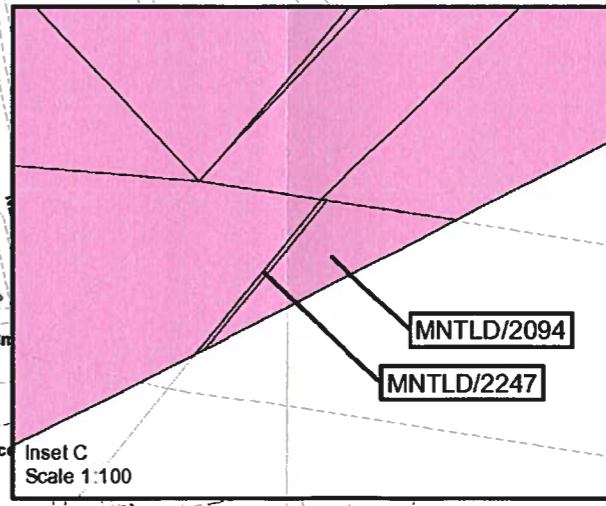
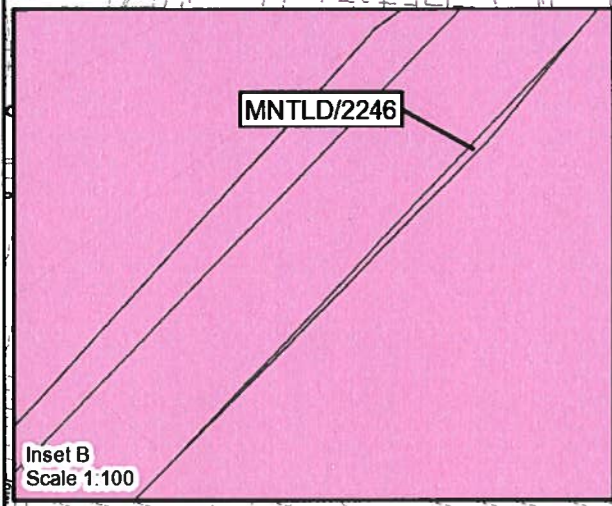
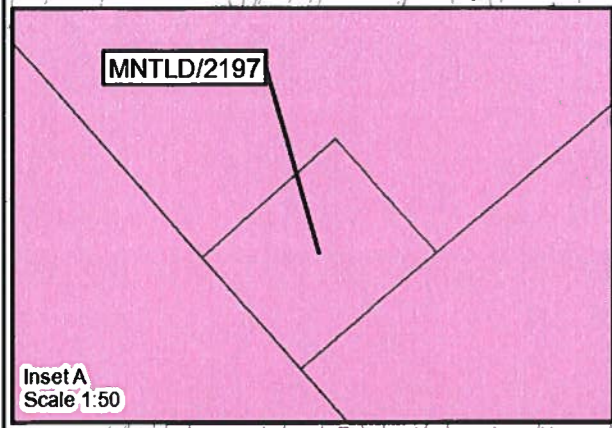
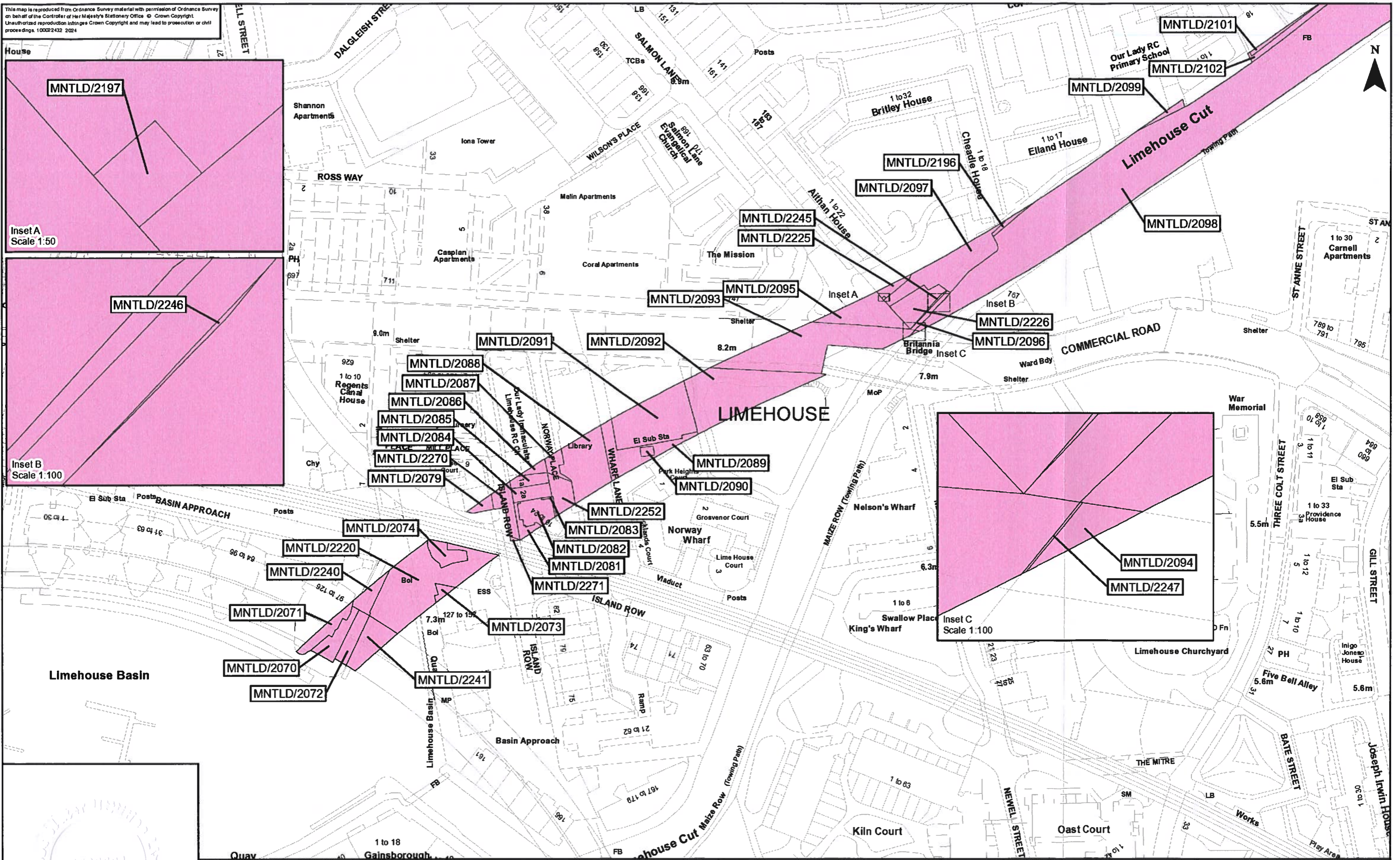
2024-1409

.....
Authorised Signatory

12 June 2024
.....

Date

This map is reproduced from Ordnance Survey material with permission of Ordnance Survey on behalf of the Controller of Her Majesty's Stationary Office. © Crown Copyright. Unauthorised reproduction infringes Crown Copyright and may lead to prosecution or civil proceedings. 10002432 2024



2024-1410

The Common seal of Thames Water Utilities Limited was affixed in the presence of:

[Signature]
 Authorised Signatory

Dated: 12 June 2024

Key

Permanent Acquisition of Land

Jacqueline Sandison
 Senior Legal Counsel

| | | | | | |
|--------|---------------|------------------|-------|-------|--------|
| 0 | | 30 | | 60 | |
| Metres | | | | | |
| Rev # | Revision Date | Revision Details | Drawn | Check | Review |
| A | 31/05/2024 | | RH | JM | LC |



Tideway

Date: 31/05/2024

Scale at A3
1:1,250

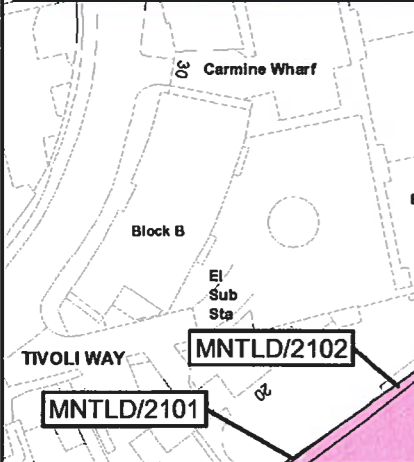
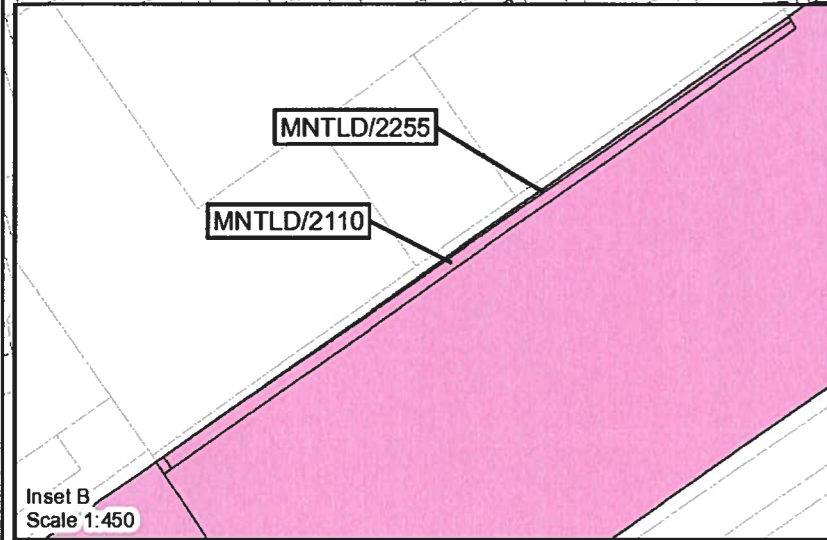
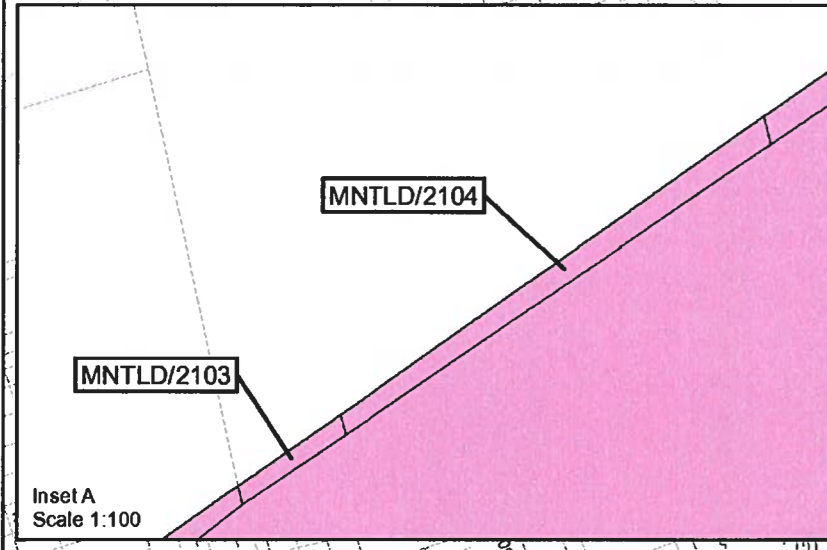
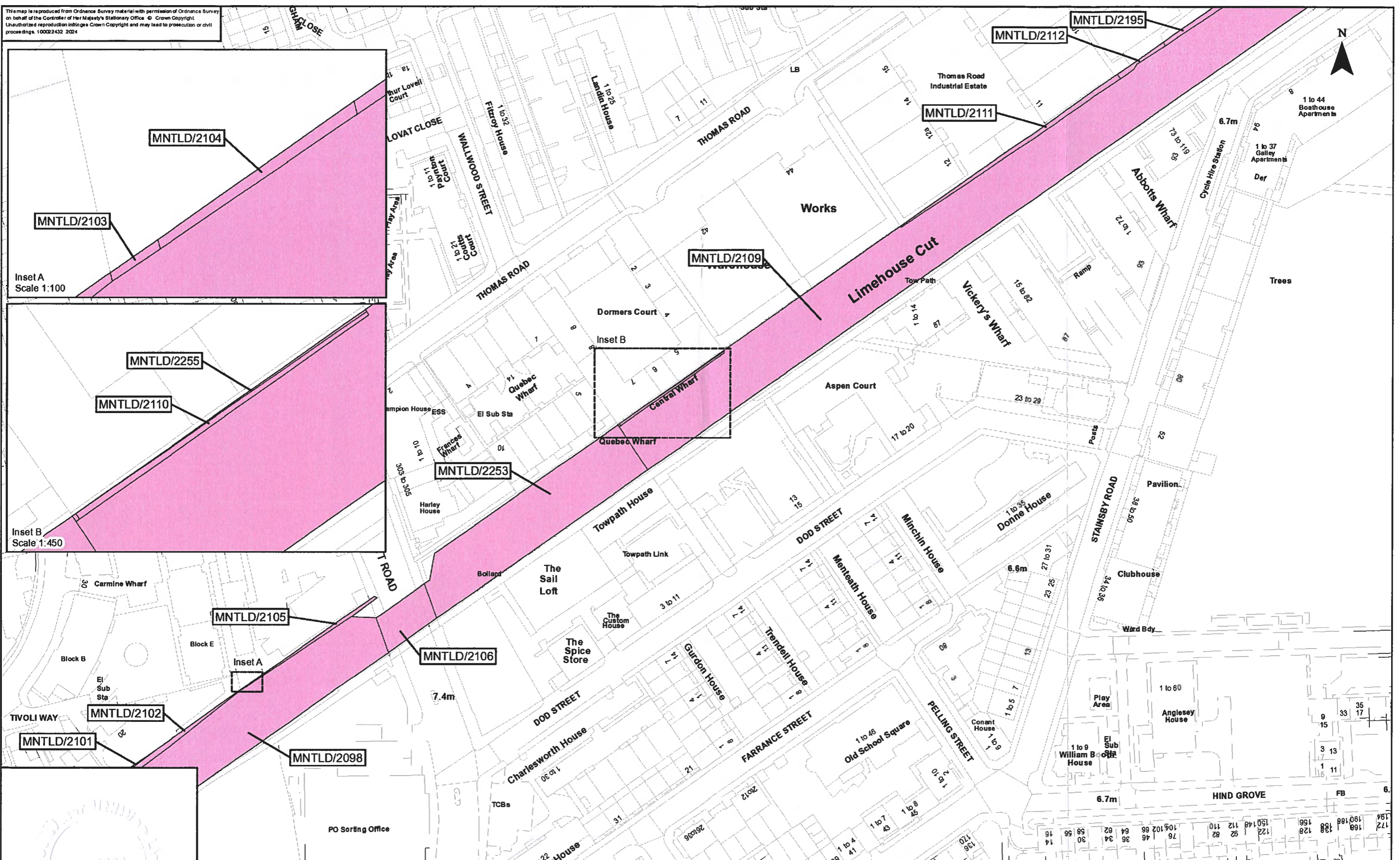
AS Title
The Thames Water Utilities Limited (Thames Tideway Tunnel) Order 2014 (AS AMENDED) SI 2014 NO 2384

Drawing Title
Plan referred to in General Vesting Declaration No. 39 of The Thames Water Utilities Limited (Thames Tideway Tunnel) Order 2014 (AS AMENDED) SI 2014 NO 2384

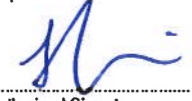
For identification only


Document Reference
70054885-N TC-GVD-TR2-GVD39-0001

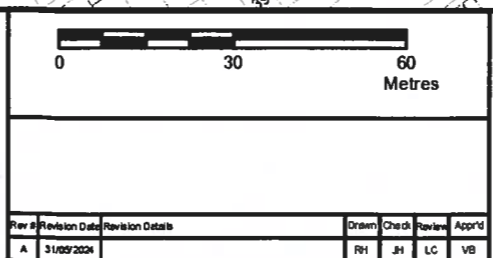


This map is reproduced from Ordnance Survey material with permission of Ordnance Survey on behalf of the Controller of Her Majesty's Stationary Office. © Crown Copyright. Unauthorised reproduction infringes Crown Copyright and may lead to prosecution or civil proceedings. 10002432 2024



2024-1411

The Common seal of Thames Water Utilities Limited was affixed in the presence of:

 Authorised Signatory
 Dated: 12 June 2024

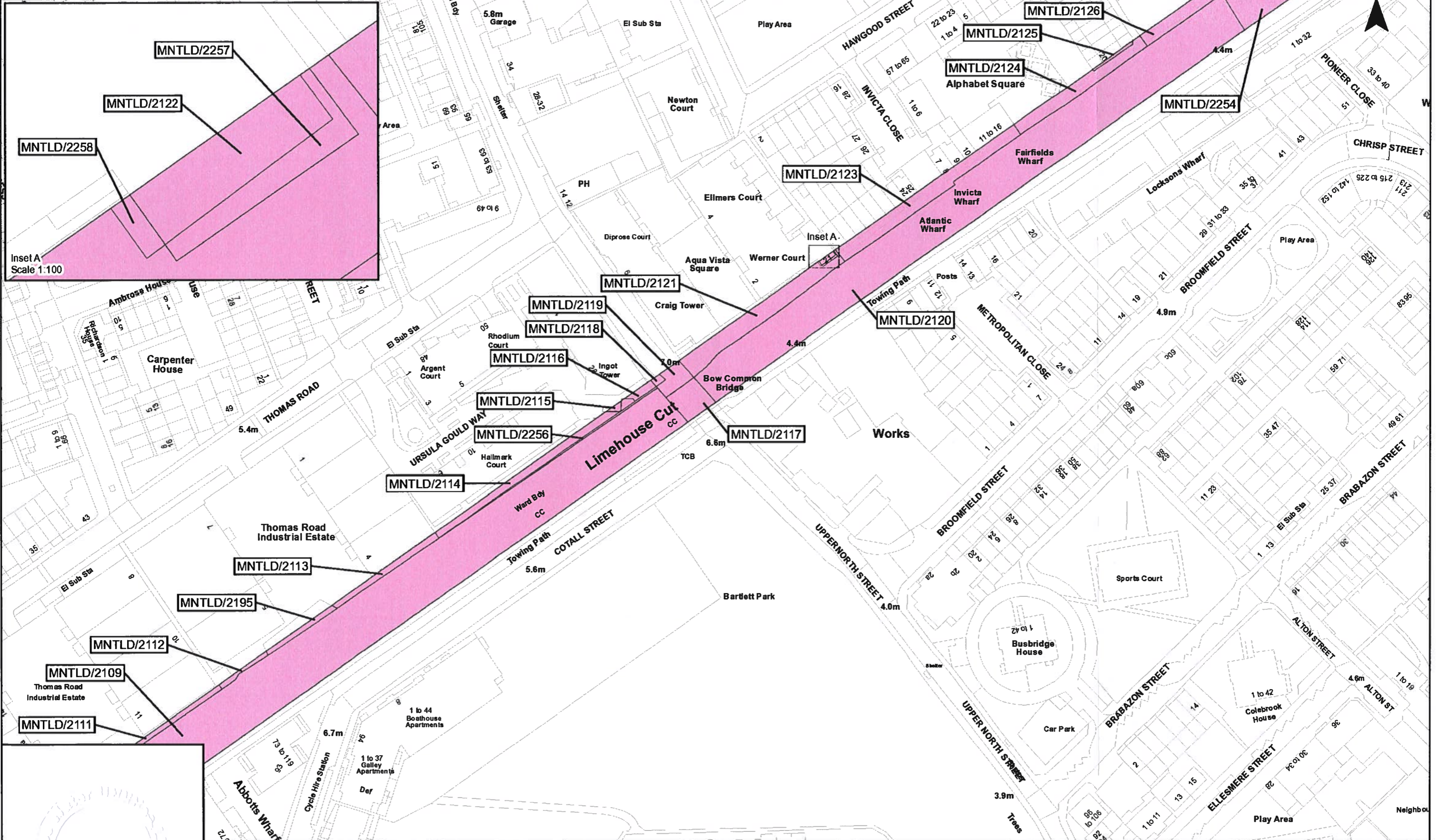
Key
 Permanent Acquisition of Land
 Jacqueline Sandison
 Senior Legal Counsel

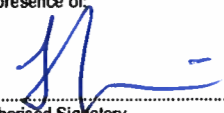
Date: 31/05/2024
 Scale: A1A3
 1:1,250


The Thames Water Utilities Limited (Thames Tideway Tunnel) Order 2014 (AS AMENDED) SI 2014 NO 2384
 Plan referred to in General Vesting Declaration No. 39 of The Thames Water Utilities Limited (Thames Tideway Tunnel) Order 2014 (AS AMENDED) SI 2014 NO 2384
 For identification only
 Document Reference
 70054885-N TC-GVD-TR2-GVD39-0002

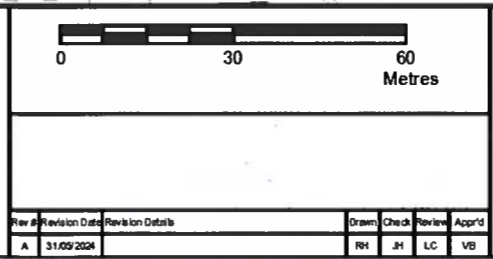
This map is reproduced from Ordnance Survey material with permission of Ordnance Survey on behalf of the Controller of Her Majesty's Stationery Office. © Crown Copyright. Unauthorised reproduction infringes Crown Copyright and may lead to prosecution or civil proceedings. 10002432 2024



2024-1412

The Common seal of Thames Water Utilities Limited was affixed in the presence of:

 Authorised Signatory
 Dated: 12 June 2024

Key
 Permanent Acquisition of Land
 Jacqueline Sandison
 Senior Legal Counsel

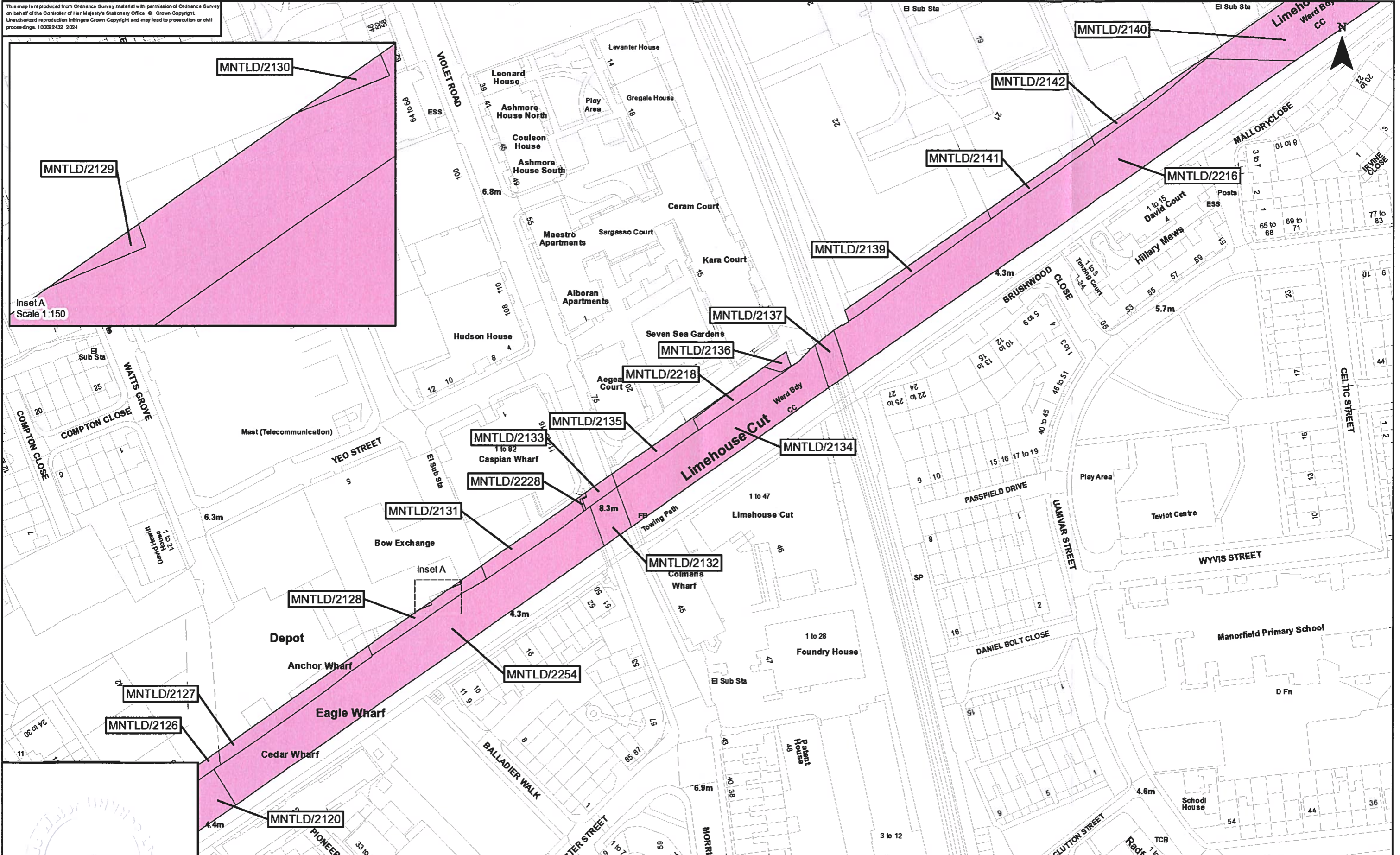




Date: 31/05/2024
 Scale at A3
 1:1,250


The Thames Water Utilities Limited (Thames Tideway Tunnel) Order 2014 (AS AMENDED) SI 2014 NO 2384
 Plan referred to in General Vesting Declaration No. 39 of The Thames Water Utilities Limited (Thames Tideway Tunnel) Order 2014 (AS AMENDED) SI 2014 NO 2384
 For identification only
 Document Reference
 70054885-N TC-GVD-TR2-GVD39-0003


This map is reproduced from Ordnance Survey material with permission of Ordnance Survey on behalf of the Controller of Her Majesty's Stationery Office. © Crown Copyright. Unauthorised reproduction infringes Crown Copyright and may lead to prosecution or civil proceedings. 100022432 2024

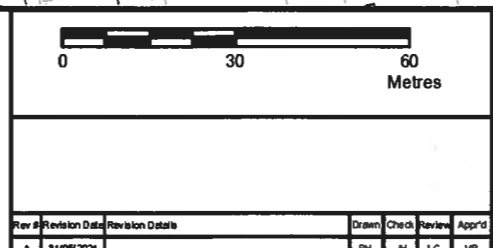


Inset A
Scale 1:150

2024-1413

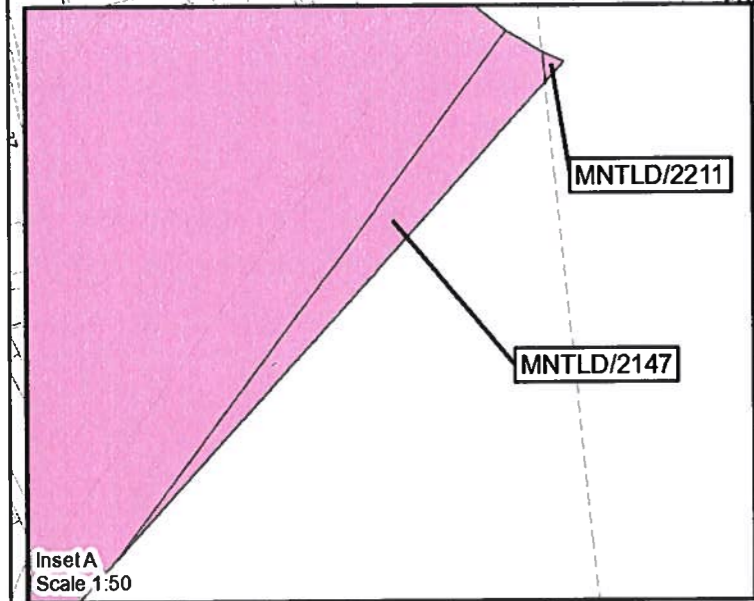
The Common seal of Thames Water Utilities Limited was affixed in the presence of:

 Authorised Signatory
 Dated: 12 June 2024

Key
 Permanent Acquisition of Land
 Jacqueline Sandison
 Senior Legal Counsel

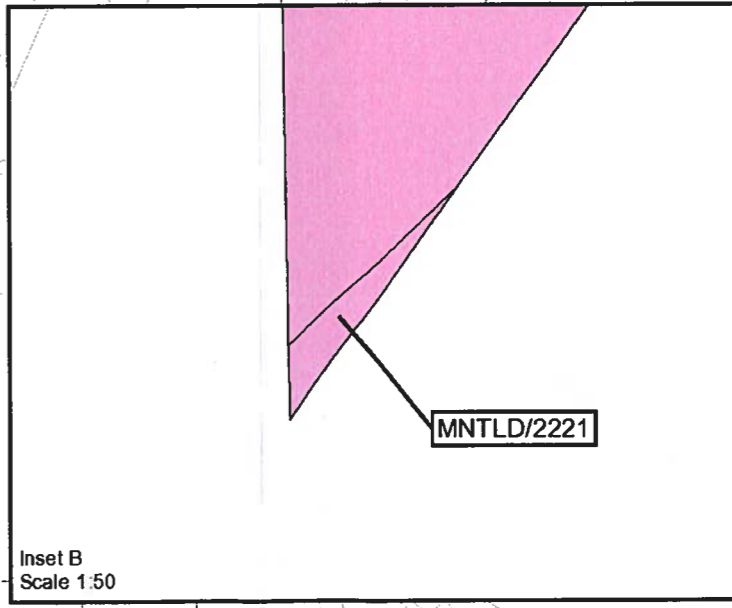
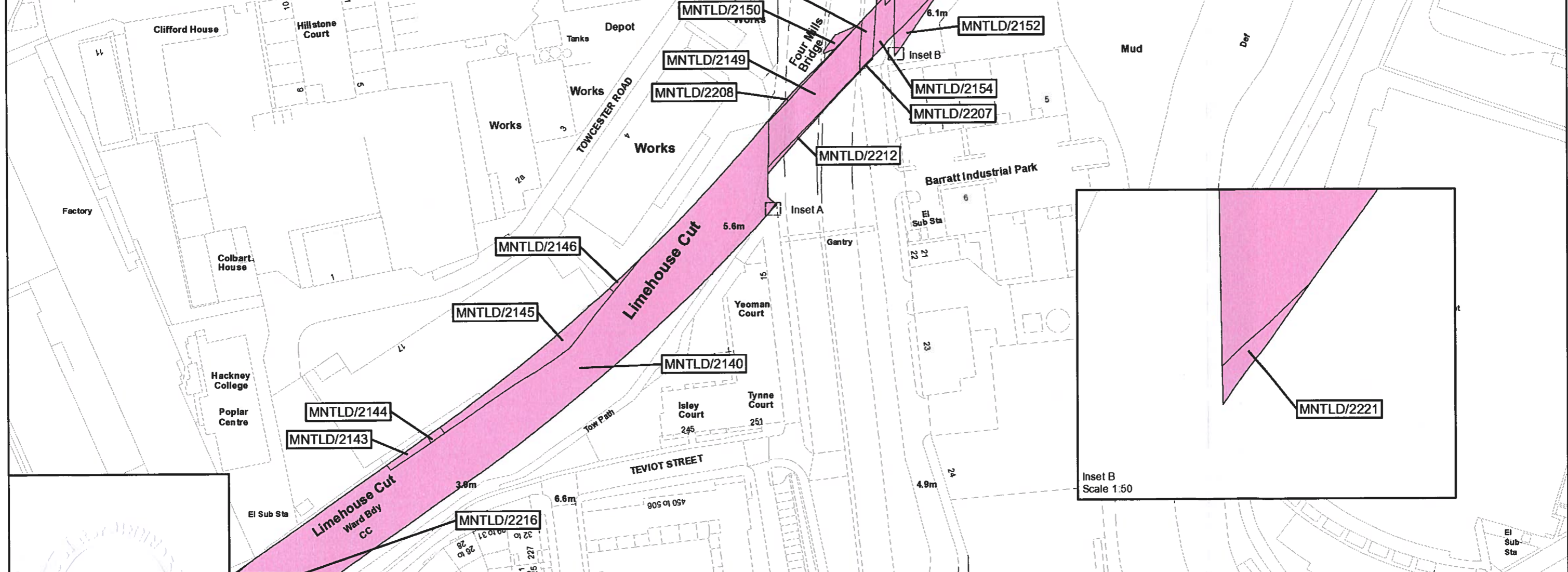


The Thames Water Utilities Limited (Thames Tideway Tunnel) Order 2014 (AS AMENDED) SI 2014 NO 2384
 Plan referred to in General Vesting Declaration No. 39 of The Thames Water Utilities Limited (Thames Tideway Tunnel) Order 2014 (AS AMENDED) SI 2014 NO 2384
 For identification only
 Document Reference
 70054885-NTC-GVD-TR2-GVD39-0004

This map is reproduced from Ordnance Survey material with permission of Ordnance Survey on behalf of the Controller of Her Majesty's Stationery Office. © Crown Copyright. Unauthorised reproduction infringes Crown Copyright and may lead to prosecution or civil proceedings. 100022432 2024





Inset A
Scale 1:50



Inset B
Scale 1:50

2024-1414

The Common seal of Thames Water Utilities Limited was affixed in the presence of:

 Authorised Signatory
 Dated: 12 June 2024

Key
 Permanent Acquisition of Land
 Jacqueline Sandison
 Senior Legal Counsel

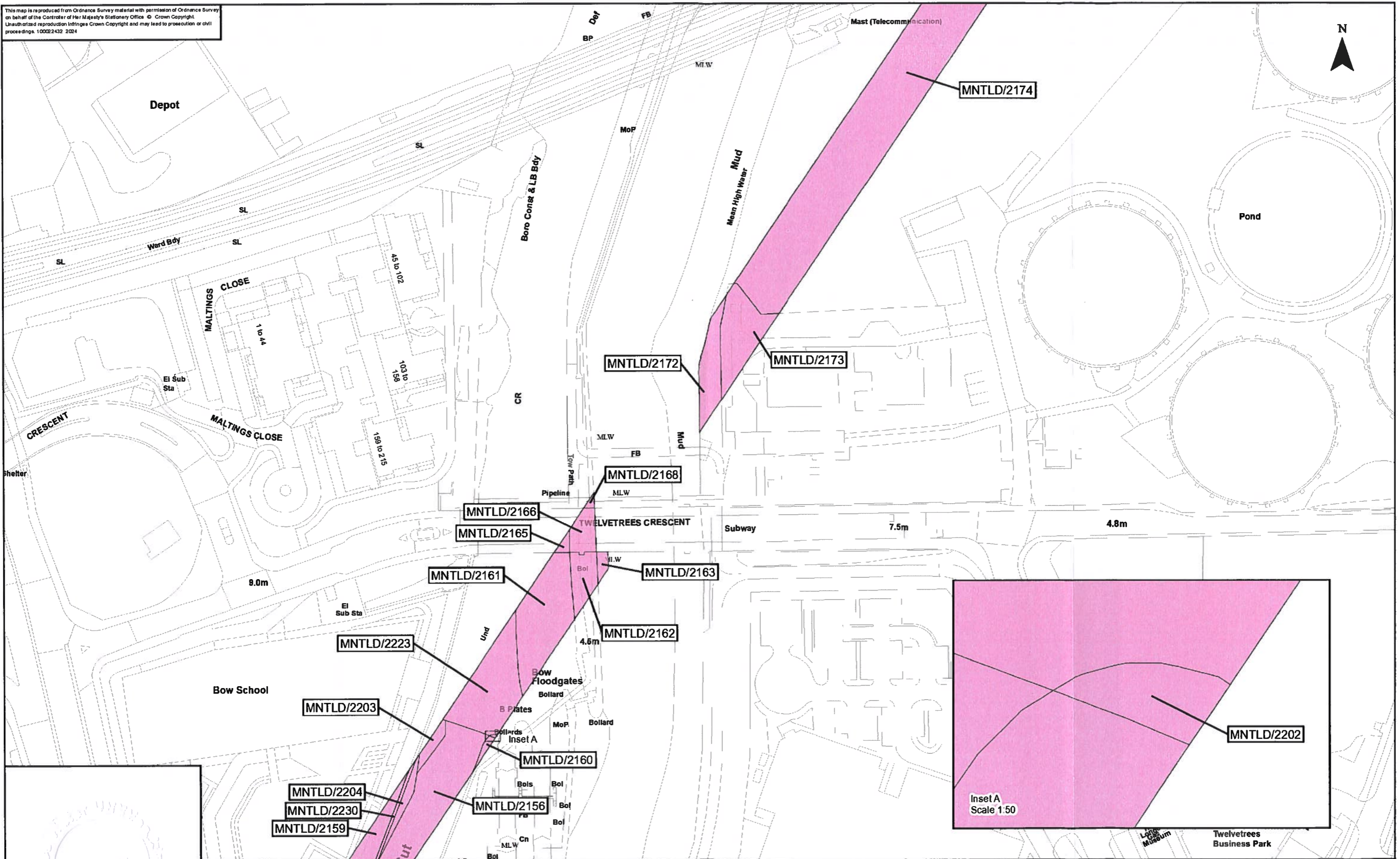
| | | | | | | | |
|-----|---------------|------------------|-------|---------|----------|----------|--|
| 0 | | 30 | | 60 | | Metres | |
| Rev | Revision Date | Revision Details | Drawn | Checked | Reviewed | Approved | |
| A | 31/05/2024 | | RH | JH | LC | VB | |



Thames Water
Tideway
 Date: 31/05/2024
 Scale at A3
 1:1,250

The Thames Water Utilities Limited (Thames Tideway Tunnel) Order 2014 (AS AMENDED) SI 2014 NO 2384
 Plan referred to in General Vesting Declaration No 39 of The Thames Water Utilities Limited (Thames Tideway Tunnel) Order 2014 (AS AMENDED) SI 2014 NO 2384
 For identification only
 Document Reference
 70054885-N TC-GVD-TR2-GVD39-0005

This map is reproduced from Ordnance Survey material with permission of Ordnance Survey on behalf of the Controller of Her Majesty's Stationery Office. © Crown Copyright. Unauthorised reproduction infringes Crown Copyright and may lead to prosecution or civil proceedings. 100022432 2024



2024-1415

The Common seal of Thames Water Utilities Limited was affixed in the presence of:

[Signature]

Authorised Signatory

Dated: 12 June 2024

Key

Permanent Acquisition of Land

Jacqueline Sandison
Senior Legal Counsel

| | | | | | |
|--------|---------------|------------------|-------|-------|-------|
| 0 | | 30 | | 60 | |
| Metres | | | | | |
| Rev # | Revision Date | Revision Details | Drawn | Check | App'd |
| A | 31/05/2024 | | RH | JH | LC |

wsp

Thames Water

Tideway

Date: 31/05/2024

Scale at A3: 1:1,250

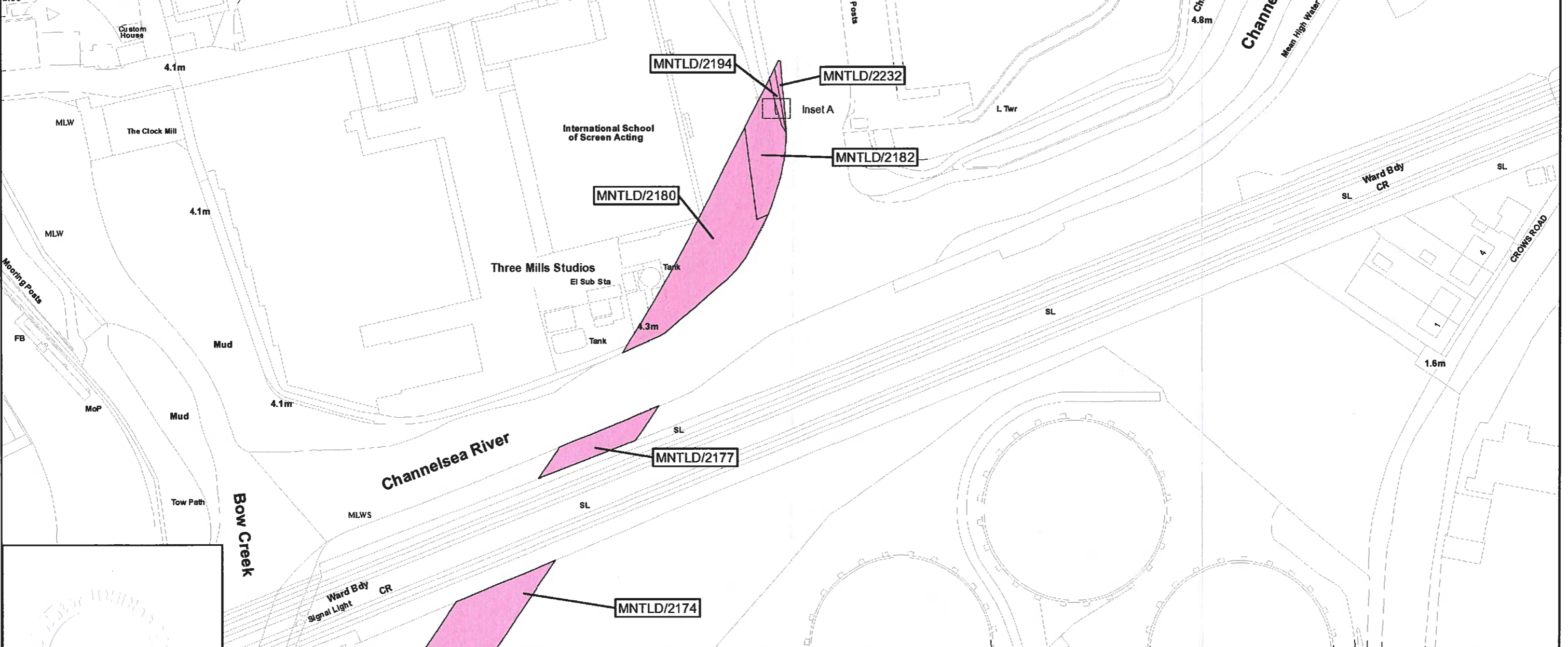
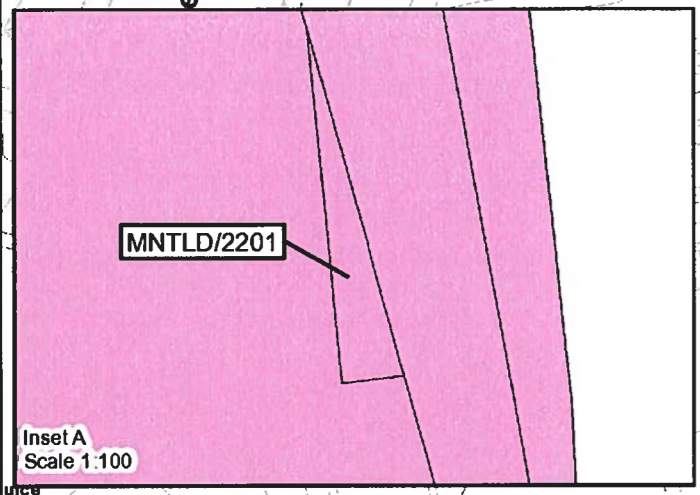
Job Title: The Thames Water Utilities Limited (Thames Tideway Tunnel) Order 2014 (AS AMENDED) SI 2014 NO 2384

Drawing Title: Plan referred to in General Vesting Declaration No. 39 of The Thames Water Utilities Limited (Thames Tideway Tunnel) Order 2014 (AS AMENDED) SI 2014 NO 2384

Notes: For identification only

Document Reference: 70054885-N-TC-GVD-TR2-GVD39-0006

This map is reproduced from Ordnance Survey material with permission of Ordnance Survey on behalf of the Controller of Her Majesty's Stationery Office © Crown Copyright. Unauthorised reproduction infringes Crown Copyright and may lead to prosecution or civil proceedings. 100022432 2024



2024-1416

The Common seal of Thames Water Utilities Limited was affixed in the presence of:

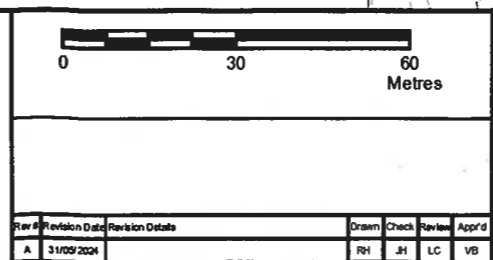
[Signature]
Authorised Signatory

Dated: 12 June 2024

Key

Permanent Acquisition of Land

Jacqueline Sandison
Senior Legal Counsel



The Thames Water Utilities Limited (Thames Tideway Tunnel) Order 2014 (AS AMENDED) SI 2014 NO 2384

Plan referred to in General Vesting Declaration No. 39 of The Thames Water Utilities Limited (Thames Tideway Tunnel) Order 2014 (AS AMENDED) SI 2014 NO 2384

Document Reference: 70054885-NTG-GVD-TR2-GVD39-7