

THE THAMES WATER UTILITIES LIMITED (THAMES TIDEWAY TUNNEL) ORDER 2014 (AS AMENDED)¹ SI 2014 NO.2384

GENERAL VESTING DECLARATION No. 43

This GENERAL VESTING DECLARATION NO. 43 is made the 12 day of June 2024 by Thames Water Utilities Limited ("Thames Water").

WHEREAS:

- 1 On 3 September 2014 an order entitled The Thames Water Utilities Limited (Thames Tideway Tunnel) Order 2014 (as amended) SI 2014 No.2384 ("the Order") was made (and came into force on 24 September 2014) by the Secretaries of State for Communities and Local Government and Environment, Food and Rural Affairs under the powers conferred on them by the Planning Act 2008 authorising Thames Water to acquire the land specified in the Schedule hereto.
- 2 Notice of the making/confirmation of the Order was first published in accordance with section 134 of the Planning Act 2008 on 19 September 2014.
- 3 Preliminary notice of the intention to make a general vesting declaration in respect of any of the land described in the Schedule hereto was first published on **19 July 2023** in accordance with section 3 of the Compulsory Purchase (Vesting Declarations) Act 1981 ("the 1981 Act")², as modified by Article 34 of the Order.
- 4 That preliminary notice included the particulars specified in section 3(3) of the 1981 Act, as modified by Article 34 of the Order.
- 5 The notice referred to in (4) above specified the period of two months beginning with the date of its first publication as the period before the end of which this general vesting declaration could not be executed.

NOW THIS DEED WITNESSETH that, in exercise of the powers conferred on them by the Order and section 4 of the 1981 Act, Thames Water hereby declare:

Save in so far as they comprise or affect interests of Excluded Persons (listed in column 5 of the Schedule), the land described in the Schedule hereto being part of the land authorised to be acquired by the Order and more particularly delineated on the plans annexed hereto, together with the right to enter upon and take possession of the land shall vest in the Thames Water as from the end of the period of 28 days from the date on which the service of notices required by section 6 of the 1981 Act and in accordance with Article 34 of the Order is completed.

¹ The Order has been amended by (1) SI 2015/723 issued on 17 March 2015; (2) SI 2017/659 issued on 16 May 2017; (3) SI 2018/1262 issued 29 November 2018; (4) Notices of Variation Nos.1 and 2 Issued on 17 March 2015 and 17 August 2017 respectively in respect of the Deemed Marine Licence; (5) SI 2020/268 issued on 10 March 2020; and (6) SI 2020/862 issued on 13 August 2020.

² The Version of the 1981 Act is the version that applied immediately prior to amendments brought in by the Housing and Planning Bill on 13 October 2015 and as modified by the Order.

SCHEDULE

The land

<u>Reference number on attached notice plan</u>	<u>Description of the land</u>	<u>Associated Book of Reference plot number</u>	<u>Title Number</u>	<u>Excluded Persons</u>
FALCT/2008	20.7 square metres of a stratum of subsoil below public road and footway (York Road, A3205) where the upper surface of the stratum of the sub-soil is at a level equivalent to -25.1m (minus Twenty Five Point One metres) OD (Ordnance Datum) or thereabout at its western boundary and -25.2m (minus Twenty Five Point Two metres) OD (Ordnance Datum) or thereabouts at its eastern boundary, and the lower surface of the stratum of the sub-soil is at a level equivalent to -41.8m (minus Forty One Point Eight metres) OD (Ordnance Datum) or thereabout at its western boundary and -41.9m (minus Forty One Point Nine metres) OD (Ordnance Datum) or thereabouts at its eastern boundary.	203 - London Borough of Wandsworth	TGL62250	Transport for London
FALCT/2012	1.6 square metres of a stratum of subsoil below public footway (York Road, A3205) where the upper surface of the stratum of the sub-soil is at a level equivalent to -26.1m (minus Twenty Six Point One metres) OD (Ordnance Datum) or thereabout at its western boundary and -26.1m (minus Twenty Six Point One metres) OD (Ordnance Datum) or thereabouts at its eastern boundary, and the lower surface of the stratum of the sub-soil is at a level equivalent to -42m (minus Forty Two metres) OD (Ordnance Datum) or thereabout at its western boundary and -42m (minus Forty Two metres) OD (Ordnance Datum) or thereabouts at its eastern boundary.	191 - London Borough of Wandsworth	Unregistered	Transport for London
FALCT/2014	0.6 square metres of a stratum of subsoil below public footway (York Road, A3205) where the upper surface of the stratum of the sub-soil is at a level equivalent to -25.2m (minus Twenty Five Point Two metres) OD (Ordnance Datum) or thereabout at its western boundary and -41.9m (minus Forty One Point Nine metres) OD (Ordnance Datum) or thereabouts at its eastern boundary, and the lower surface of the stratum of the sub-soil is at a level equivalent to -25.2m (minus Twenty Five Point Two metres) OD (Ordnance Datum) or thereabout at its western boundary and -41.9m (minus Forty One Point Nine metres) OD (Ordnance Datum) or thereabouts at its eastern boundary.	206 - London Borough of Wandsworth	Unregistered	Transport for London
FALCT/2016	2.6 square metres of a stratum of subsoil below public road and footway (York Road, A3205) where the upper surface of the stratum of the sub-soil is at a level equivalent to -25.1m (minus Twenty Five Point One metres) OD (Ordnance Datum) or thereabout at its western boundary and -25.2m (minus Twenty Five Point Two metres) OD (Ordnance Datum) or thereabouts at its eastern boundary, and the lower surface of the stratum of the sub-soil is at a level equivalent to -41.8m (minus Forty One Point Eight metres) OD	201 - London Borough of Wandsworth	TGL62250	Transport for London

	(Ordnance Datum) or thereabout at its western boundary and -41.9m (minus Forty One Point Nine metres) OD (Ordnance Datum) or thereabouts at its eastern boundary.			
FALCT/2017	0.7 square metres of a stratum of subsoil below public footway (York Road, A3205) where the upper surface of the stratum of the sub-soil is at a level equivalent to -25.2m (minus Twenty Five Point Two metres) OD (Ordnance Datum) or thereabout at its western boundary and -41.9m (minus Forty One Point Nine metres) OD (Ordnance Datum) or thereabouts at its eastern boundary, and the lower surface of the stratum of the sub-soil is at a level equivalent to -25.2m (minus Twenty Five Point Two metres) OD (Ordnance Datum) or thereabout at its western boundary and -41.9m (minus Forty One Point Nine metres) OD (Ordnance Datum) or thereabouts at its eastern boundary.	207 - London Borough of Wandsworth	Unregistered	Transport for London
FALCT/2021	0.2 square metres of a stratum of subsoil below public footway (York Road, A3205) where the upper surface of the stratum of the sub-soil is at a level equivalent to -25.1m (minus Twenty Five Point One metres) OD (Ordnance Datum) or thereabout at its western boundary and -25.2m (minus Twenty Five Point Two metres) OD (Ordnance Datum) or thereabouts at its eastern boundary, and the lower surface of the stratum of the sub-soil is at a level equivalent to -41.8m (minus Forty One Point Eight metres) OD (Ordnance Datum) or thereabout at its western boundary and -41.9m (minus Forty One Point Nine metres) OD (Ordnance Datum) or thereabouts at its eastern boundary.	202 - London Borough of Wandsworth	Unregistered	Transport for London
FALCT/2022	26.4 square metres of a stratum of subsoil below public road and footway (York Road, A3205) where the upper surface of the stratum of the sub-soil is at a level equivalent to -25.1m (minus Twenty Five Point One metres) OD (Ordnance Datum) or thereabout at its western boundary and -25.2m (minus Twenty Five Point Two metres) OD (Ordnance Datum) or thereabouts at its eastern boundary, and the lower surface of the stratum of the sub-soil is at a level equivalent to -41.8m (minus Forty One Point Eight metres) OD (Ordnance Datum) or thereabout at its western boundary and -41.9m (minus Forty One Point Nine metres) OD (Ordnance Datum) or thereabouts at its eastern boundary.	196 - London Borough of Wandsworth	Unregistered	Transport for London
FALCT/2023	282 square metres of a stratum of subsoil below public road, central reservation and footway (York Road, A3205) and shrubbery where the upper surface of the stratum of the sub-soil is at a level equivalent to -26.1m (minus Twenty Six Point One metres) OD (Ordnance Datum) or thereabout at its western boundary and -25.1m (minus Twenty Five Point One metres) OD (Ordnance Datum) or thereabouts at its eastern boundary, and the lower surface of the stratum of the sub-soil is at a level equivalent to -41.9m (minus Forty One Point Nine metres) OD (Ordnance Datum) or thereabout at its western boundary and -41.8m (minus Forty One Point Eight metres) OD (Ordnance Datum) or	191 - London Borough of Wandsworth	Unregistered	Transport for London

	thereabouts at its eastern boundary.			
FALPS/2081	12.7 square metres of a stratum of subsoil below public road and footway (York Road, A3205) where the upper surface of the stratum of the sub-soil is at a level equivalent to -25.1m (minus Twenty Five Point One metres) OD (Ordnance Datum) or thereabout at its western boundary and -25.2m (minus Twenty Five Point Two metres) OD (Ordnance Datum) or thereabouts at its eastern boundary, and the lower surface of the stratum of the sub-soil is at a level equivalent to -41.8m (minus Forty One Point Eight metres) OD (Ordnance Datum) or thereabout at its western boundary and -41.9m (minus Forty One Point Nine metres) OD (Ordnance Datum) or thereabouts at its eastern boundary.	201 - London Borough of Wandsworth	TGL62250	Transport for London
FRGCT/2040	400 square metres of a stratum of subsoil below public road, footways and grassy knoll (Armoury Way) where the upper surface of the stratum of the sub-soil is at a level equivalent to -7.2m (minus Seven Point Two metres) OD (Ordnance Datum) or thereabout at its southern boundary and -7.3m (minus Seven Point Three metres) OD (Ordnance Datum) or thereabouts at its northern boundary, and the lower surface of the stratum of the sub-soil is at a level equivalent to -21.8m (minus Twenty One Point Eight metres) OD (Ordnance Datum) or thereabout at its southern boundary and -21.9m (minus Twenty One Point Nine metres) OD (Ordnance Datum) or thereabouts at its northern boundary.	122 - London Borough of Wandsworth	Unregistered	Transport for London
FRGCT/2044	1484.2 square metres of a stratum of subsoil below public road and footways (Wandsworth Plain) where the upper surface of the stratum of the sub-soil is at a level equivalent to -7m (minus Seven metres) OD (Ordnance Datum) or thereabout at its southern boundary and -7.3m (minus Seven Point Three metres) OD (Ordnance Datum) or thereabouts at its northern boundary, and the lower surface of the stratum of the sub-soil is at a level equivalent to -21.6m (minus Twenty One Point Six metres) OD (Ordnance Datum) or thereabout at its southern boundary and -21.9m (minus Twenty One Point Nine metres) OD (Ordnance Datum) or thereabouts at its northern boundary.	124 - London Borough of Wandsworth	Unregistered	Transport for London
FRGCT/2094	17.7 square metres of a stratum of subsoil below hardstanding and weigh bridge off public Road (Dormay Street) where the upper surface of the stratum of the sub-soil is at a level equivalent to -7.5m (Seven Point Five metres) OD (Ordnance Datum) or thereabout at its western boundary and -7.5m (Seven Point Five metres) OD (Ordnance Datum) or thereabouts at its eastern boundary, and the lower surface of the stratum of the sub-soil is at a level equivalent to -22.1m (Twenty Two Point One metres) OD (Ordnance Datum) or thereabout at its western boundary and -22.1m (Twenty Two Point One metres) OD (Ordnance Datum) or thereabouts at its eastern boundary.	98 - London Borough of Wandsworth	TGL79342	
FRGCT/2095	42.8 square metres of a stratum of subsoil below storage building and hardstanding (Frogmore Complex) where the upper surface of the stratum	98 - London Borough of Wandsworth	LN128945	

	of the sub-soil is at a level equivalent to -10.6m (minus Ten Point Six metres) OD (Ordnance Datum) or thereabout at its southern boundary and -10.6m (minus Ten Point Six metres) OD (Ordnance Datum) or thereabouts at its northern boundary, and the lower surface of the stratum of the sub-soil is at a level equivalent to -25.2m (minus Twenty Five Point Two metres) OD (Ordnance Datum) or thereabout at its southern boundary and -25.2m (minus Twenty Five Point Two metres) OD (Ordnance Datum) or thereabouts at its northern boundary.			
FRGCT/2103	178 square metres of a stratum of subsoil below public road and footways (Wandsworth High Street) where the upper surface of the stratum of the sub-soil is at a level equivalent to -6.9m (minus Six Point Nine metres) OD (Ordnance Datum) or thereabout at its southern boundary and -7m (minus Seven metres) OD (Ordnance Datum) or thereabouts at its northern boundary, and the lower surface of the stratum of the sub-soil is at a level equivalent to -21.5m (minus Twenty One Point Five metres) OD (Ordnance Datum) or thereabout at its southern boundary and -21.6m (minus Twenty One Point Six metres) OD (Ordnance Datum) or thereabouts at its northern boundary.	148 - London Borough of Wandsworth	Unregistered	Transport for London
HEAPS/2020	9.2 square metres of a stratum of subsoil below hardstanding (Nine Elms Lane) where the upper surface of the stratum of the sub-soil is at a level equivalent to -31.1m (minus Thirty One Point One metres) OD (Ordnance Datum) or thereabout at its western boundary and -31.1m (minus Thirty One Point One metres) OD (Ordnance Datum) or thereabouts at its eastern boundary, and the lower surface of the stratum of the sub-soil is at a level equivalent to -48.4m (minus Forty Eight Point Four metres) OD (Ordnance Datum) or thereabout at its western boundary and -48.4m (minus Forty Eight Point Four metres) OD (Ordnance Datum) or thereabouts at its eastern boundary.	314 - London Borough of Wandsworth	116727	
MNTLA/2112	115.7 square metres of a stratum of subsoil below viaduct carrying railway and works (District line) and car park (off Welstead Way) where the upper surface of the stratum of the sub-soil is at a level equivalent to -14m (minus Fourteen metres) OD (Ordnance Datum) or thereabout at its western boundary and -14m (minus Fourteen metres) OD (Ordnance Datum) or thereabouts at its eastern boundary, and the lower surface of the stratum of the sub-soil is at a level equivalent to -32.5m (minus Thirty Two Point Five metres) OD (Ordnance Datum) or thereabout at its western boundary and -32.5m (minus Thirty Two Point Five metres) OD (Ordnance Datum) or thereabouts at its eastern boundary.	71 - London Borough of Hounslow	NGL164185, AGL365095	London Underground Limited
MNTLA/2114	184.8 square metres of a stratum of subsoil below viaduct carrying railway and works (District line) and car park (off Welstead Way) where the upper surface of the stratum of the sub-soil is at a level equivalent to -14m (minus Fourteen metres) OD (Ordnance Datum) or thereabout at its western	73 - London Borough of Hounslow	NGL164185	London Underground Limited

	boundary and -14m (minus Fourteen metres) OD (Ordnance Datum) or thereabouts at its eastern boundary, and the lower surface of the stratum of the sub-soil is at a level equivalent to -32.5m (minus Thirty Two Point Five metres) OD (Ordnance Datum) or thereabout at its western boundary and -32.5m (minus Thirty Two Point Five metres) OD (Ordnance Datum) or thereabouts at its eastern boundary.			
MNTLA/2196	80.1 square metres of a stratum of subsoil below house and garden (26, British Grove) where the upper surface of the stratum of the sub-soil is at a level equivalent to -14.8m (minus Fourteen Point Eight metres) OD (Ordnance Datum) or thereabout at its western boundary and -14.8m (minus Fourteen Point Eight metres) OD (Ordnance Datum) or thereabouts at its eastern boundary, and the lower surface of the stratum of the sub-soil is at a level equivalent to -33.3m (minus Thirty Three Point Three metres) OD (Ordnance Datum) or thereabout at its western boundary and -33.3m (minus Thirty Three Point Three metres) OD (Ordnance Datum) or thereabouts at its eastern boundary.	174 - London Borough of Hounslow	NGL563521	
MNTLA/2204	4.6 square metres of a stratum of subsoil below house (36, British Grove South) where the upper surface of the stratum of the sub-soil is at a level equivalent to -14.9m (minus Fourteen Point Nine metres) OD (Ordnance Datum) or thereabout at its western boundary and -14.9m (minus Fourteen Point Nine metres) OD (Ordnance Datum) or thereabouts at its eastern boundary, and the lower surface of the stratum of the sub-soil is at a level equivalent to -33.4m (minus Thirty Three Point Four metres) OD (Ordnance Datum) or thereabout at its western boundary and -33.4m (minus Thirty Three Point Four metres) OD (Ordnance Datum) or thereabouts at its eastern boundary.	183 - London Borough of Hounslow	AGL55742	
MNTLA/2206	104.6 square metres of a stratum of subsoil below private road (British Grove South) where the upper surface of the stratum of the sub-soil is at a level equivalent to -14.9m (minus Fourteen Point Nine metres) OD (Ordnance Datum) or thereabout at its western boundary and -14.9m (minus Fourteen Point Nine metres) OD (Ordnance Datum) or thereabouts at its eastern boundary, and the lower surface of the stratum of the sub-soil is at a level equivalent to -33.4m (minus Thirty Three Point Four metres) OD (Ordnance Datum) or thereabout at its western boundary and -33.5m (minus Thirty Three Point Five metres) OD (Ordnance Datum) or thereabouts at its eastern boundary.	57 - London Borough of Hammersmith & Fulham	NGL528095	
MNTLA/2216	104.8 square metres of a stratum of subsoil below house and garden (14, Miller's Court) where the upper surface of the stratum of the sub-soil is at a level equivalent to -15m (minus Fifteen metres) OD (Ordnance Datum) or thereabout at its western boundary and -15m (minus Fifteen metres) OD (Ordnance Datum) or thereabouts at its eastern boundary, and the lower surface of the stratum of the sub-soil is at a level equivalent to -	67 - London Borough of Hammersmith & Fulham	NGL682784	

	33.5m (minus Thirty Three Point Five metres) OD (Ordnance Datum) or thereabout at its western boundary and -33.5m (minus Thirty Three Point Five metres) OD (Ordnance Datum) or thereabouts at its eastern boundary.			
MNTLA/2217	76.9 square metres of a stratum of subsoil below house and garden (12, Miller's Court) where the upper surface of the stratum of the sub-soil is at a level equivalent to -15m (minus Fifteen metres) OD (Ordnance Datum) or thereabout at its western boundary and -15m (minus Fifteen metres) OD (Ordnance Datum) or thereabouts at its eastern boundary, and the lower surface of the stratum of the sub-soil is at a level equivalent to -33.5m (minus Thirty Three Point Five metres) OD (Ordnance Datum) or thereabout at its western boundary and -33.5m (minus Thirty Three Point Five metres) OD (Ordnance Datum) or thereabouts at its eastern boundary.	68 - London Borough of Hammersmith & Fulham	NGL665577	
MNTLA/2218	75.8 square metres of a stratum of subsoil below house and garden (11, Miller's Court) where the upper surface of the stratum of the sub-soil is at a level equivalent to -15m (minus Fifteen metres) OD (Ordnance Datum) or thereabout at its western boundary and -15m (minus Fifteen metres) OD (Ordnance Datum) or thereabouts at its eastern boundary, and the lower surface of the stratum of the sub-soil is at a level equivalent to -33.5m (minus Thirty Three Point Five metres) OD (Ordnance Datum) or thereabout at its western boundary and -33.5m (minus Thirty Three Point Five metres) OD (Ordnance Datum) or thereabouts at its eastern boundary.	69 - London Borough of Hammersmith & Fulham	NGL207622	
MNTLA/2219	56.1 square metres of a stratum of subsoil below house and garden (10, Miller's Court) where the upper surface of the stratum of the sub-soil is at a level equivalent to -15m (minus Fifteen metres) OD (Ordnance Datum) or thereabout at its western boundary and -15m (minus Fifteen metres) OD (Ordnance Datum) or thereabouts at its eastern boundary, and the lower surface of the stratum of the sub-soil is at a level equivalent to -33.5m (minus Thirty Three Point Five metres) OD (Ordnance Datum) or thereabout at its western boundary and -33.5m (minus Thirty Three Point Five metres) OD (Ordnance Datum) or thereabouts at its eastern boundary.	70 - London Borough of Hammersmith & Fulham	NGL261029	
MNTLA/2322	4.8 square metres of a stratum of subsoil below footway (11, Miller's Court) where the upper surface of the stratum of the sub-soil is at a level equivalent to -15m (minus Fifteen metres) OD (Ordnance Datum) or thereabout at its western boundary and -15m (minus Fifteen metres) OD (Ordnance Datum) or thereabouts at its eastern boundary, and the lower surface of the stratum of the sub-soil is at a level equivalent to -33.5m (minus Thirty Three Point Five metres) OD (Ordnance Datum) or thereabout at its western boundary and -33.5m (minus Thirty Three Point Five metres) OD (Ordnance Datum) or thereabouts at its eastern boundary.	69 - London Borough of Hammersmith & Fulham	Unregistered	

MNTLA/2329	76.6 square metres of a stratum of subsoil below public road, footways, hardstanding and car parking (British Grove South) where the upper surface of the stratum of the sub-soil is at a level equivalent to -14.9m (minus Fourteen Point Nine metres) OD (Ordnance Datum) or thereabout at its western boundary and -14.9m (minus Fourteen Point Nine metres) OD (Ordnance Datum) or thereabouts at its eastern boundary, and the lower surface of the stratum of the sub-soil is at a level equivalent to -33.4m (minus Thirty Three Point Four metres) OD (Ordnance Datum) or thereabout at its western boundary and -33.4m (minus Thirty Three Point Four metres) OD (Ordnance Datum) or thereabouts at its eastern boundary.	181 - London Borough of Hounslow	Unregistered	
MNTLA/2330	74.6 square metres of a stratum of subsoil below public road and footpath (British Grove South and British Grove Passage) where the upper surface of the stratum of the sub-soil is at a level equivalent to -14.9m (minus Fourteen Point Nine metres) OD (Ordnance Datum) or thereabout at its western boundary and -14.9m (minus Fourteen Point Nine metres) OD (Ordnance Datum) or thereabouts at its eastern boundary, and the lower surface of the stratum of the sub-soil is at a level equivalent to -33.4m (minus Thirty Three Point Four metres) OD (Ordnance Datum) or thereabout at its western boundary and -33.5m (minus Thirty Three Point Five metres) OD (Ordnance Datum) or thereabouts at its eastern boundary.	57 - London Borough of Hammersmith & Fulham	Unregistered	
MNTLA/2332	0.4 square metres of a stratum of subsoil below public road (British Grove) where the upper surface of the stratum of the sub-soil is at a level equivalent to -14.8m (minus Fourteen Point Eight metres) OD (Ordnance Datum) or thereabout at its western boundary and -14.8m (minus Fourteen Point Eight metres) OD (Ordnance Datum) or thereabouts at its eastern boundary, and the lower surface of the stratum of the sub-soil is at a level equivalent to -33.3m (minus Thirty Three Point Three metres) OD (Ordnance Datum) or thereabout at its western boundary and -33.3m (minus Thirty Three Point Three metres) OD (Ordnance Datum) or thereabouts at its eastern boundary.	176 - London Borough of Hounslow	Unregistered	
MNTLB/2047	356.1 square metres of a stratum of subsoil below hardstanding, conveyor and storage (off Cringle Street) where the upper surface of the stratum of the sub-soil is at a level equivalent to -29.5m (minus Twenty Nine Point Five metres) OD (Ordnance Datum) or thereabout at its western boundary and -49.3m (minus Forty Nine Point Three metres) OD (Ordnance Datum) or thereabouts at its eastern boundary, and the lower surface of the stratum of the sub-soil is at a level equivalent to -29.5m (minus Twenty Nine Point Five metres) OD (Ordnance Datum) or thereabout at its western boundary and -49.3m (minus Forty Nine Point Three metres) OD (Ordnance Datum) or thereabouts at its eastern boundary.	251 - London Borough of Wandsworth	LN153350	

MNTLB/2048	0.1 square metres of a stratum of subsoil below hardstanding, conveyor and storage (off Cringle Street) where the upper surface of the stratum of the sub-soil is at a level equivalent to -29.5m (minus Twenty Nine Point Five metres) OD (Ordnance Datum) or thereabout at its western boundary and -29.5m (minus Twenty Nine Point Five metres) OD (Ordnance Datum) or thereabouts at its eastern boundary, and the lower surface of the stratum of the sub-soil is at a level equivalent to -49.3m (minus Forty Nine Point Three metres) OD (Ordnance Datum) or thereabout at its western boundary and -49.3m (minus Forty Nine Point Three metres) OD (Ordnance Datum) or thereabouts at its eastern boundary.	246 - London Borough of Wandsworth	LN153350	
MNTLB/2049	27.5 square metres of a stratum of subsoil below hardstanding, conveyor and storage (off Cringle Street) where the upper surface of the stratum of the sub-soil is at a level equivalent to -29.5m (minus Twenty Nine Point Five metres) OD (Ordnance Datum) or thereabout at its western boundary and -49.3m (minus Forty Nine Point Three metres) OD (Ordnance Datum) or thereabouts at its eastern boundary, and the lower surface of the stratum of the sub-soil is at a level equivalent to -29.5m (minus Twenty Nine Point Five metres) OD (Ordnance Datum) or thereabout at its western boundary and -49.3m (minus Forty Nine Point Three metres) OD (Ordnance Datum) or thereabouts at its eastern boundary.	246 - London Borough of Wandsworth	LN153350	
MNTLC/2002	5.6 square metres of a stratum of subsoil below hardstanding, conveyor, storage and works (off Cringle Street) where the upper surface of the stratum of the sub-soil is at a level equivalent to -29.6m (minus Twenty Nine Point Six metres) OD (Ordnance Datum) or thereabout at its western boundary and -29.6m (minus Twenty Nine Point Six metres) OD (Ordnance Datum) or thereabouts at its eastern boundary, and the lower surface of the stratum of the sub-soil is at a level equivalent to -49.4m (minus Forty Nine Point Four metres) OD (Ordnance Datum) or thereabout at its western boundary and -49.4m (minus Forty Nine Point Four metres) OD (Ordnance Datum) or thereabouts at its eastern boundary.	251 - London Borough of Wandsworth	LN153350	
MNTLC/2003	894 square metres of a stratum of subsoil below warehouse and footway (88, Kirtling Street) where the upper surface of the stratum of the sub-soil is at a level equivalent to -29.6m (minus Twenty Nine Point Six metres) OD (Ordnance Datum) or thereabout at its western boundary and -29.6m (minus Twenty Nine Point Six metres) OD (Ordnance Datum) or thereabouts at its eastern boundary, and the lower surface of the stratum of the sub-soil is at a level equivalent to -49.4m (minus Forty Nine Point Four metres) OD (Ordnance Datum) or thereabout at its western boundary and -49.4m (minus Forty Nine Point Four metres) OD (Ordnance Datum) or thereabouts at its eastern boundary.	253 - London Borough of Wandsworth	SGL102320, TGL390233	

MNTLC/2012	11.1 square metres of a stratum of subsoil below hardstanding (William Henry Walk) where the upper surface of the stratum of the sub-soil is at a level equivalent to -31.1m (minus Thirty One Point One metres) OD (Ordnance Datum) or thereabout at its western boundary and -31.1m (minus Thirty One Point One metres) OD (Ordnance Datum) or thereabouts at its eastern boundary, and the lower surface of the stratum of the sub-soil is at a level equivalent to -48.4m (minus Forty Eight Point Four metres) OD (Ordnance Datum) or thereabout at its western boundary and -48.4m (minus Forty Eight Point Four metres) OD (Ordnance Datum) or thereabouts at its eastern boundary.	320 - London Borough of Wandsworth	SGL140009	
MNTLC/2013	3.3 square metres of a stratum of subsoil below wall and hardstanding (off Nine Elms Lane) where the upper surface of the stratum of the sub-soil is at a level equivalent to -31.1m (minus Thirty One Point One metres) OD (Ordnance Datum) or thereabout at its western boundary and -31.1m (minus Thirty One Point One metres) OD (Ordnance Datum) or thereabouts at its eastern boundary, and the lower surface of the stratum of the sub-soil is at a level equivalent to -48.4m (minus Forty Eight Point Four metres) OD (Ordnance Datum) or thereabout at its western boundary and -48.4m (minus Forty Eight Point Four metres) OD (Ordnance Datum) or thereabouts at its eastern boundary.	319 - London Borough of Wandsworth	SGL140009	
MNTLC/2147	45.8 square metres of a stratum of subsoil below hardstanding (William Henry Walk) where the upper surface of the stratum of the sub-soil is at a level equivalent to -9.5m (minus Nine Point Five metres) OD (Ordnance Datum) or thereabout at its western boundary and -9.5m (minus Nine Point Five metres) OD (Ordnance Datum) or thereabouts at its eastern boundary, and the lower surface of the stratum of the sub-soil is at a level equivalent to -22.9m (minus Twenty Two Point Nine metres) OD (Ordnance Datum) or thereabout at its western boundary and -22.9m (minus Twenty Two Point Nine metres) OD (Ordnance Datum) or thereabouts at its eastern boundary.	320 - London Borough of Wandsworth	SGL140009	
MNTLC/2148	12.8 square metres of a stratum of subsoil below wall and hardstanding (off Nine Elms Lane) where the upper surface of the stratum of the sub-soil is at a level equivalent to -9.5m (minus Nine Point Five metres) OD (Ordnance Datum) or thereabout at its western boundary and -9.5m (minus Nine Point Five metres) OD (Ordnance Datum) or thereabouts at its eastern boundary, and the lower surface of the stratum of the sub-soil is at a level equivalent to -22.9m (minus Twenty Two Point Nine metres) OD (Ordnance Datum) or thereabout at its western boundary and -22.9m (minus Twenty Two Point Nine metres) OD (Ordnance Datum) or thereabouts at its eastern boundary.	319 - London Borough of Wandsworth	SGL140009	

EXECUTION PAGE

The Common seal of **Thames Water**)
Utilities Limited was affixed in the)
presence of:)

Jacqueline Sandison
Senior Legal Counsel



2024-1417

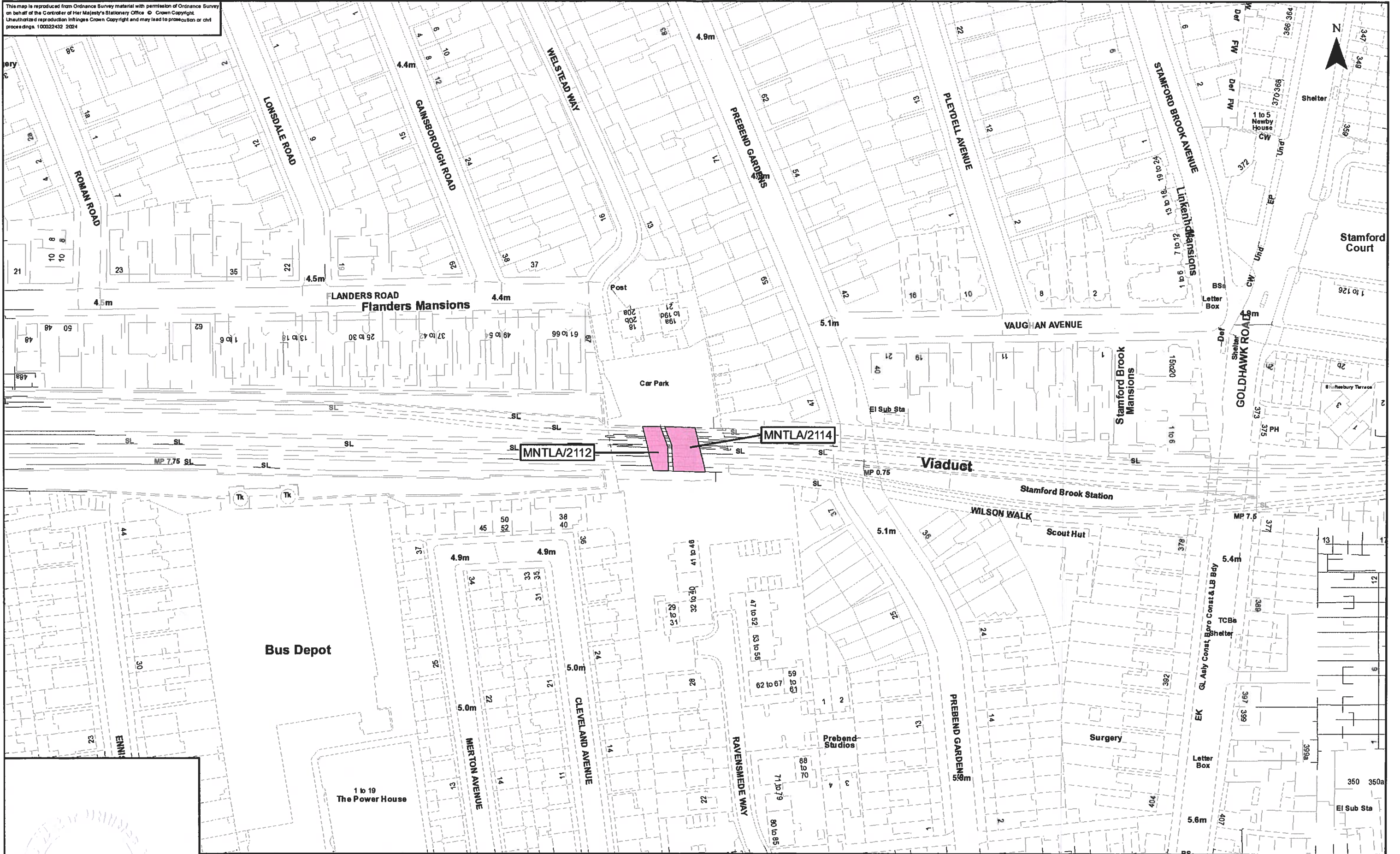
A handwritten signature in blue ink, appearing to be 'J. Sandison', written over a dotted line.

Authorised Signatory

12 June 2024

Date

This map is reproduced from Ordnance Survey material with permission of Ordnance Survey on behalf of the Controller of Her Majesty's Stationery Office. © Crown Copyright. Unauthorised reproduction infringes Crown Copyright and may lead to prosecution or civil proceedings. 100022432 2024



2024-1428

The Common seal of Thames Water Utilities Limited was affixed in the presence of:

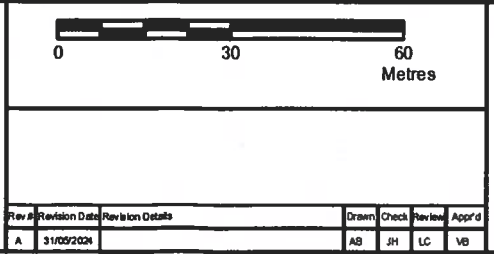
[Signature]
 Authorised Signatory

Dated: 12 June 2024

Key

Permanent Acquisition of Land

Jacqueline Sandison
 Senior Legal Counsel



Tideway

Date: 31/05/2024

Scale at A3
1:1,250

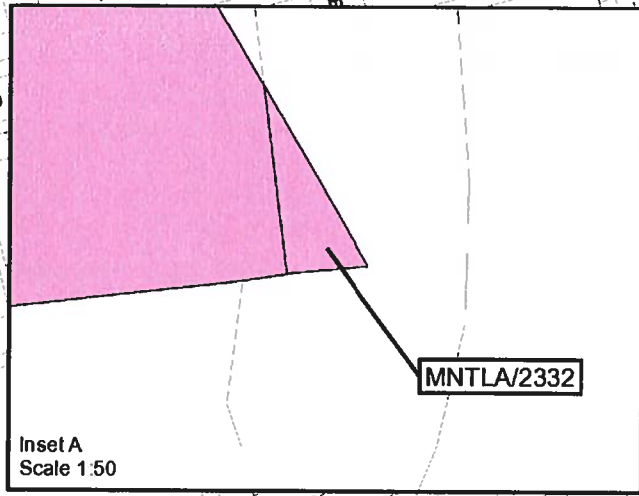
The Thames Water Utilities Limited (Thames Tideway Tunnel) Order 2014 (AS AMENDED) SI 2014 NO 2384

Drawing Title
 Plan referred to in General Vesting Declaration No. 43 of The Thames Water Utilities Limited (Thames Tideway Tunnel) Order 2014 (AS AMENDED) SI 2014 NO 2384


For identification only


Document Reference
 70054885-NTC-GVD-TR1-GVD43-0001

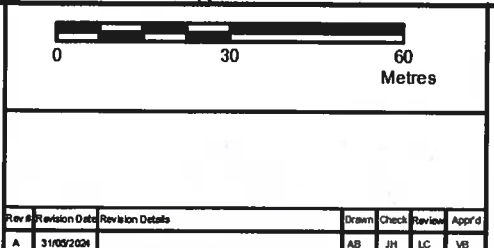
This map is reproduced from Ordnance Survey material with permission of Ordnance Survey on behalf of the Controller of Her Majesty's Stationery Office © Crown Copyright. Unauthorised reproduction infringes Crown Copyright and may lead to prosecution or civil proceedings. 10002432 2024



2024-1419

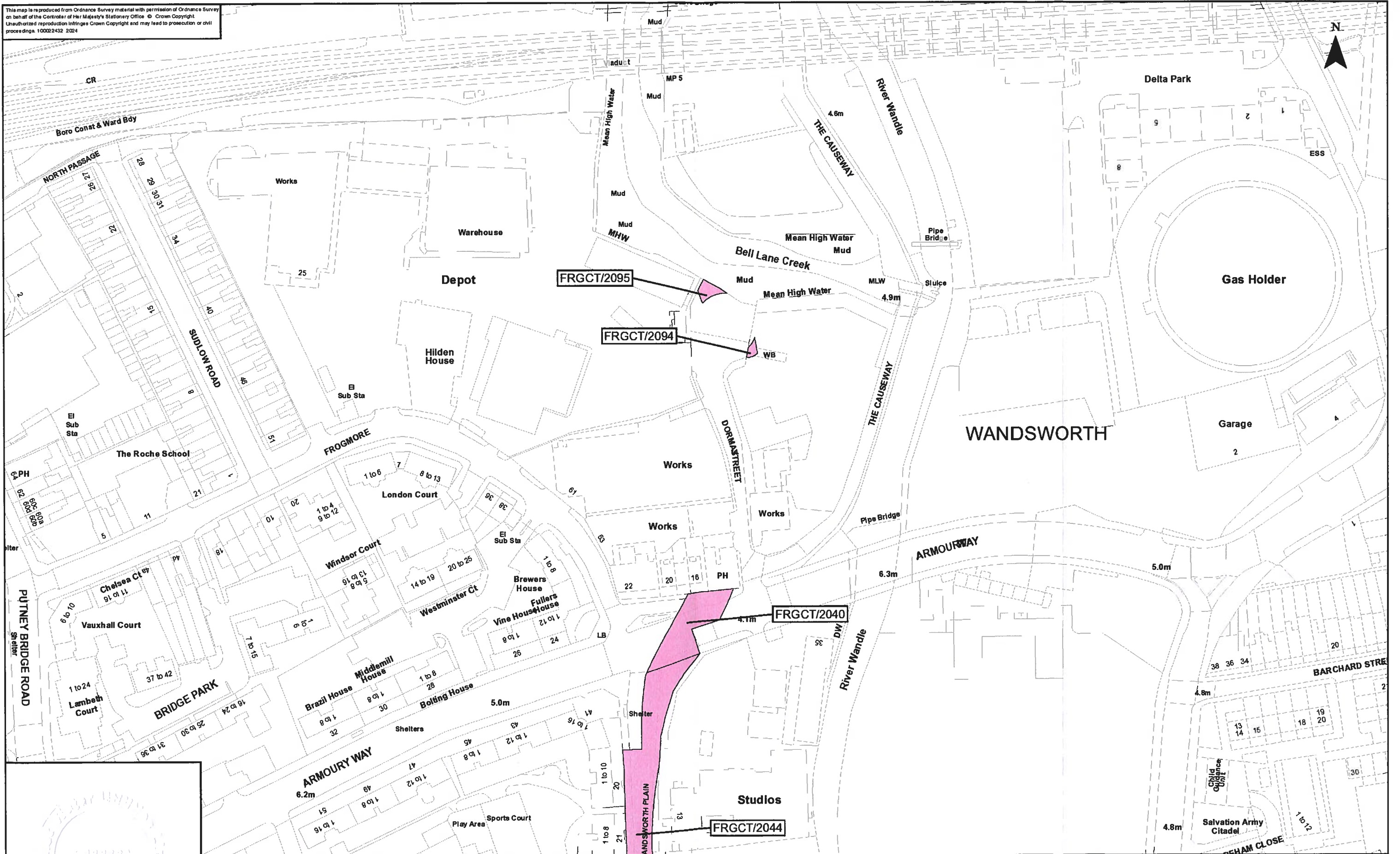
The Common seal of Thames Water Utilities Limited was affixed in the presence of:

 Authorised Signatory
 Dated: 12 June 2024

Key
 Permanent Acquisition of Land
 Jacqueline Sandison
 Senior Legal Counsel



The Thames Water Utilities Limited (Thames Tideway Tunnel) Order 2014 (AS AMENDED) SI 2014 NO 2384
 Plan referred to in General Vesting Declaration No. 43 of The Thames Water Utilities Limited (Thames Tideway Tunnel) Order 2014 (AS AMENDED) SI 2014 NO 2384
 For identification only
 Document Reference
 70054885-NTC-GVD-TR1-GVD43-0002

This map is reproduced from Ordnance Survey material with permission of Ordnance Survey on behalf of the Controller of Her Majesty's Stationery Office. © Crown Copyright. Unauthorised reproduction infringes Crown Copyright and may lead to prosecution or civil proceedings. 10002432 2024



2024-1420

The Common seal of Thames Water Utilities Limited was affixed in the presence of:

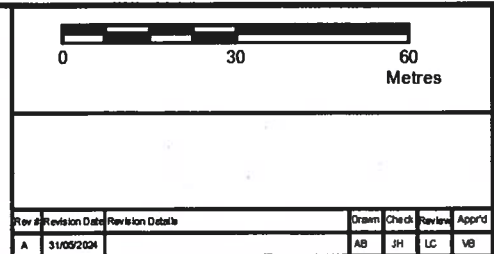
[Signature]
 Authorised Signatory

Dated: 12 June 2024

Key

Permanent Acquisition of Land

Jacqueline Sandison
 Senior Legal Counsel



Thames Water

Tideway

Date: 31/05/2024

Scale at A3
1:1,250

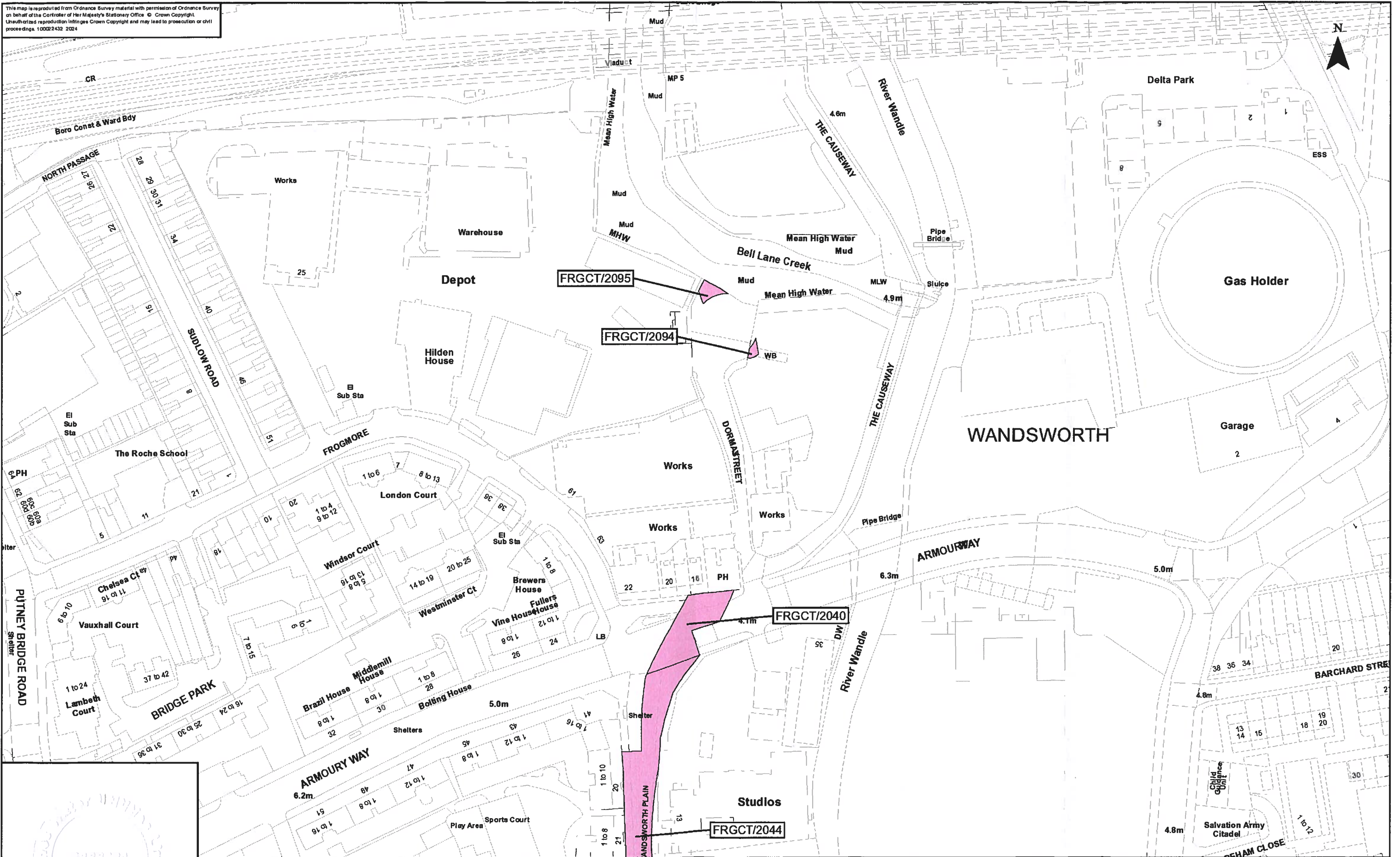
The Thames Water Utilities Limited (Thames Tideway Tunnel) Order 2014 (AS AMENDED) SI 2014 NO 2384

Plan referred to in General Vesting Declaration No. 43 of The Thames Water Utilities Limited (Thames Tideway Tunnel) Order 2014 (AS AMENDED) SI 2014 NO 2384

For identification only

Document Reference
70054885-NTC-GVD-TR1-GVD43-0003

This map is reproduced from Ordnance Survey material with permission of Ordnance Survey on behalf of the Controller of Her Majesty's Stationery Office. © Crown Copyright. Unauthorised reproduction infringes Crown Copyright and may lead to prosecution or civil proceedings. 10002432 2024



2024-1421

The Common seal of Thames Water Utilities Limited was affixed in the presence of:

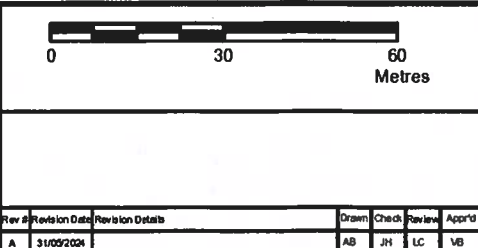
[Signature]
 Authorised Signatory

Dated: 12 June 2024

Key

Permanent Acquisition of Land

Jacqueline Sandison
 Senior Legal Counsel



Tideway

Date: 31/05/2024

Scale at A3
1:1,250

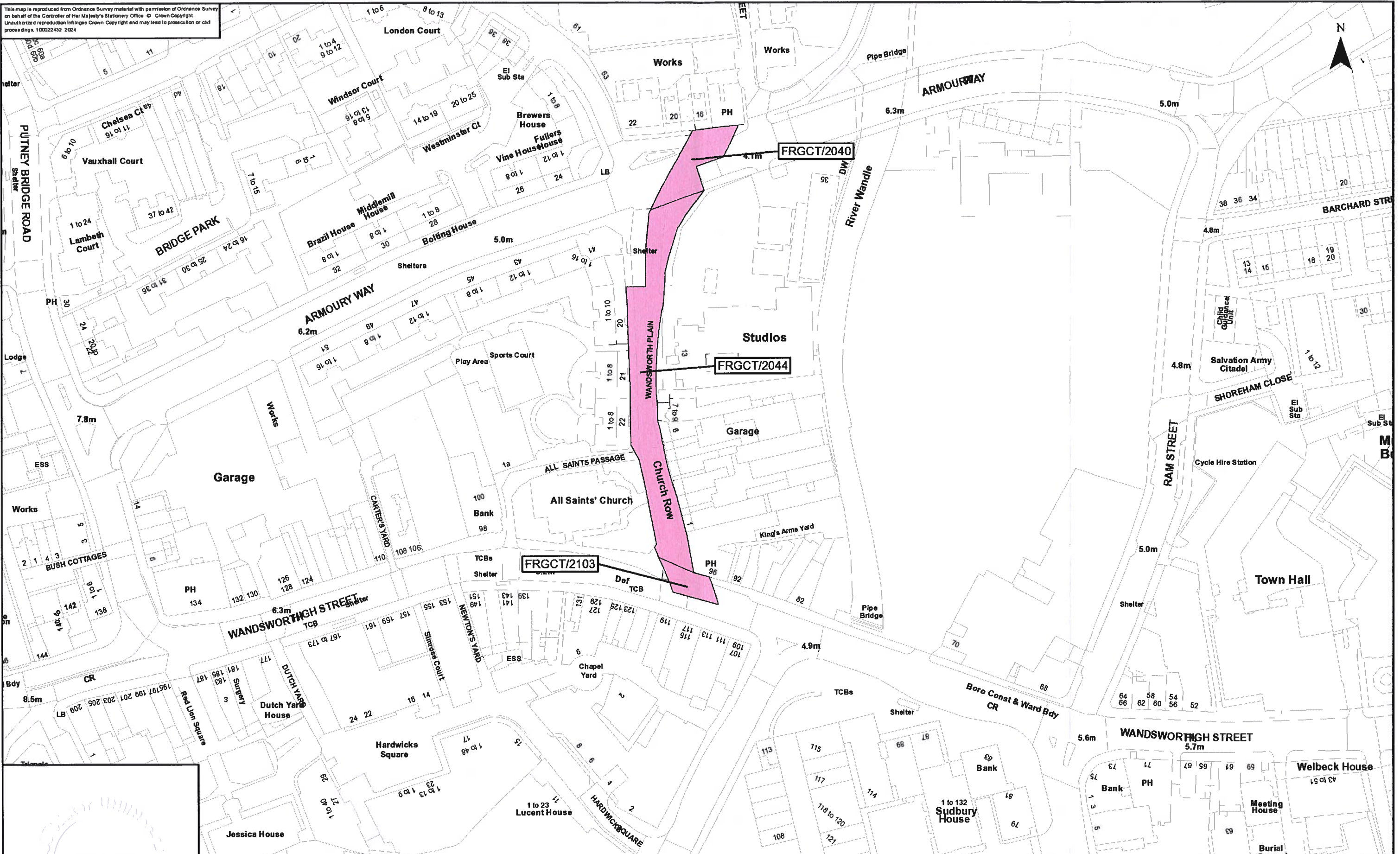
The Thames Water Utilities Limited (Thames Tideway Tunnel) Order 2014 (AS AMENDED) SI 2014 NO 2384

Plan referred to in General Vesting Declaration No. 43 of The Thames Water Utilities Limited (Thames Tideway Tunnel) Order 2014 (AS AMENDED) SI 2014 NO 2384

For identification only

Document Reference
70054885-N TC-GVD-TR1-GVD43-000

This map is reproduced from Ordnance Survey material with permission of Ordnance Survey on behalf of the Controller of Her Majesty's Stationery Office © Crown Copyright. Unauthorised reproduction infringes Crown Copyright and may lead to prosecution or civil proceedings. 100022432 2024



2024-1422

The Common seal of Thames Water Utilities Limited was affixed in the presence of

[Signature]

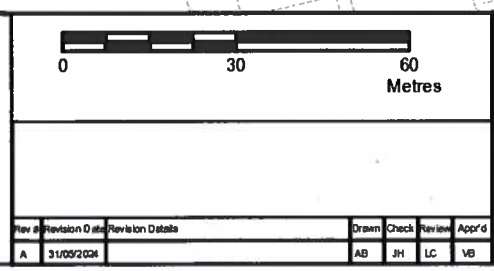
Authorised Signatory

Dated: 12 June 2024

Key

Permanent Acquisition of Land

Jacqueline Sandison
Senior Legal Counsel



The Thames Water Utilities Limited (Thames Tideway Tunnel) Order 2014 (AS AMENDED) SI 2014 NO 2384

Plan referred to in General Vesting Declaration No. 43 of The Thames Water Utilities Limited (Thames Tideway Tunnel) Order 2014 (AS AMENDED) SI 2014 NO 2384

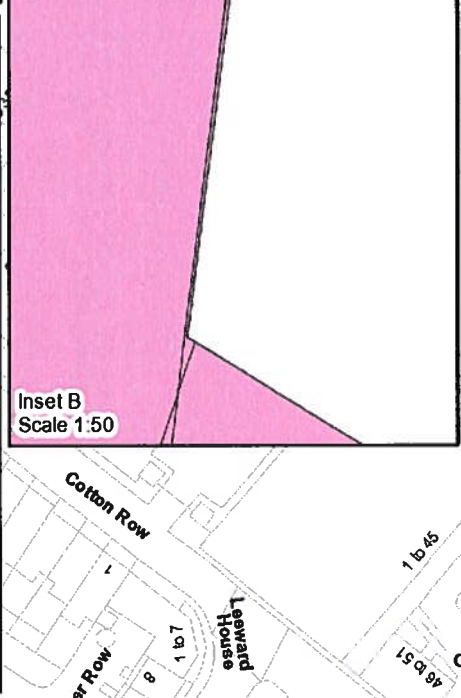
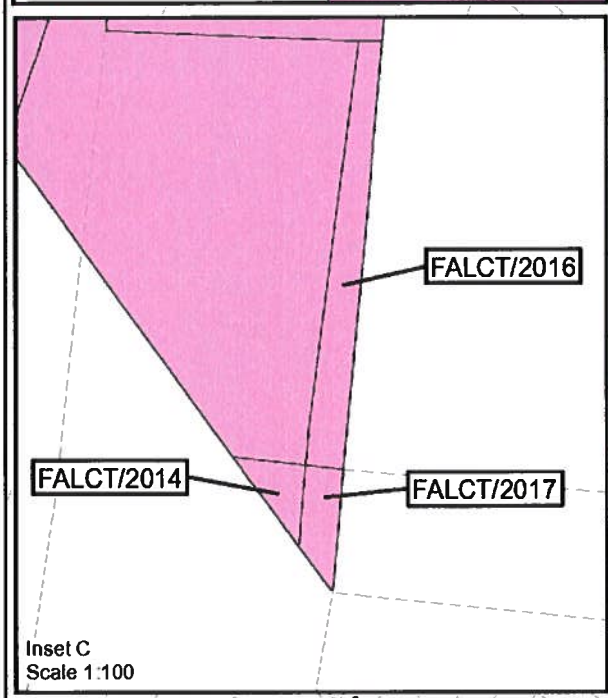
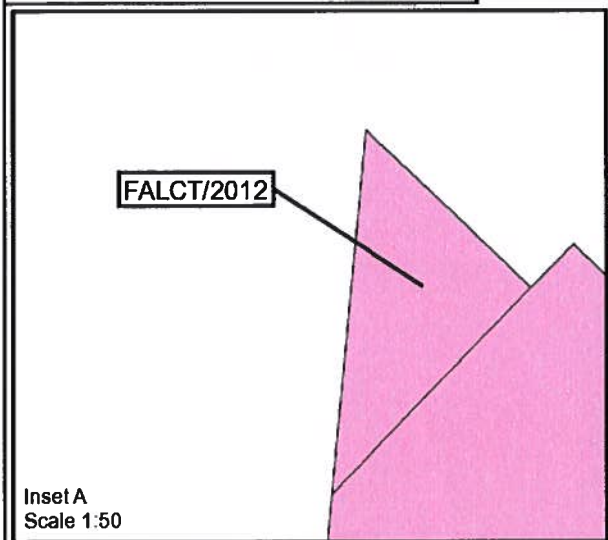
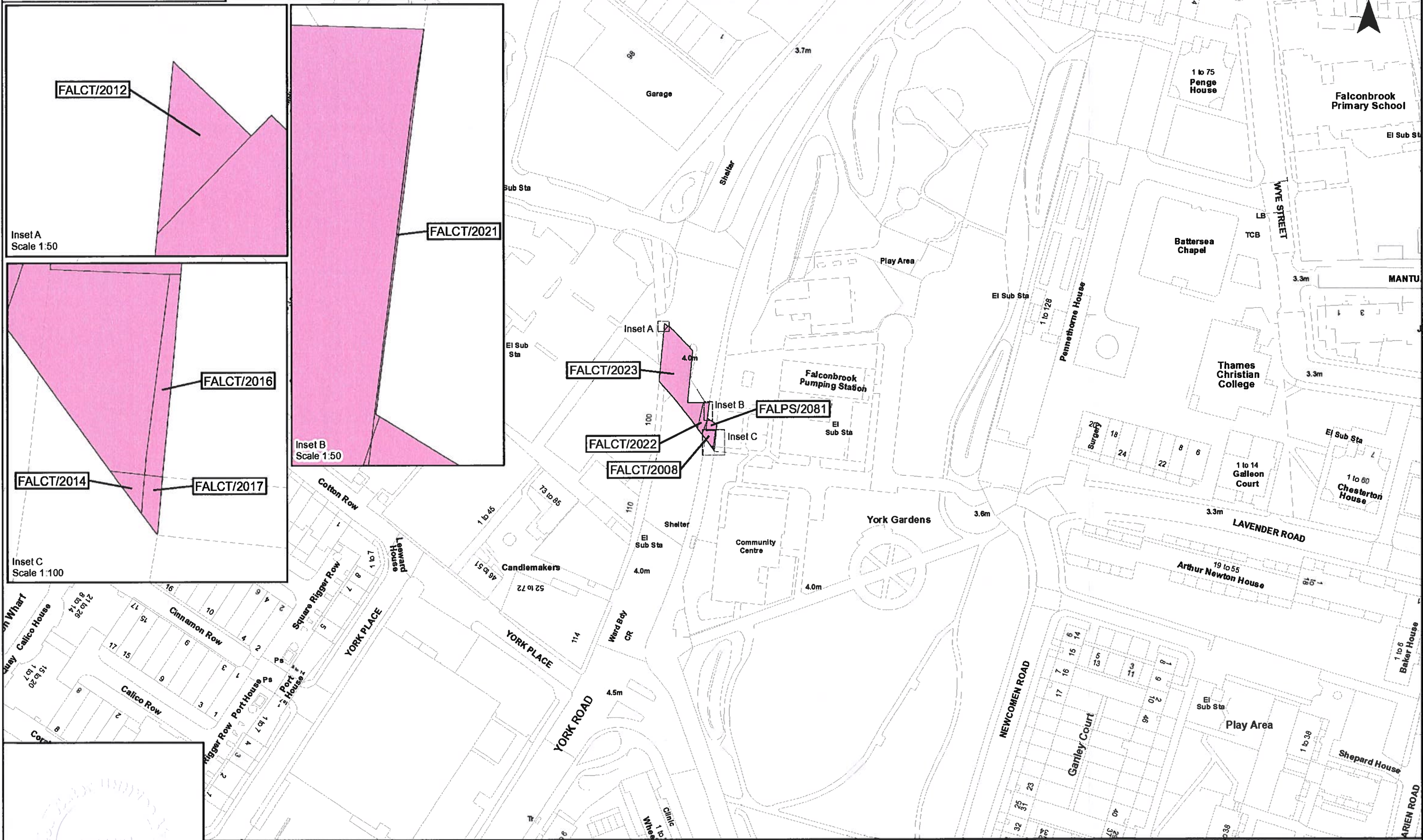
For identification only

Document Reference 70054885-NTC-GVD-TR1-GVD43-0004

Rev #	Revision Description	Drawn	Check	Review	App'd
A	31/05/2024	AB	JH	LC	VB

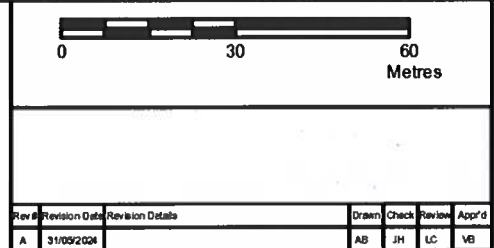
This map is reproduced from Ordnance Survey material with permission of Ordnance Survey on behalf of the Controller of Her Majesty's Stationary Office © Crown Copyright. Unauthorised reproduction infringes Crown Copyright and may lead to prosecution or civil proceedings. 100022432 2024

Shingle



The Common seal of Thames Water Utilities Limited was affixed in the presence of:
12 June 2024
 Authorised Signatory
 Dated:

Key
 Permanent Acquisition of Land
 Jacqueline Sandison
 Senior Legal Counsel



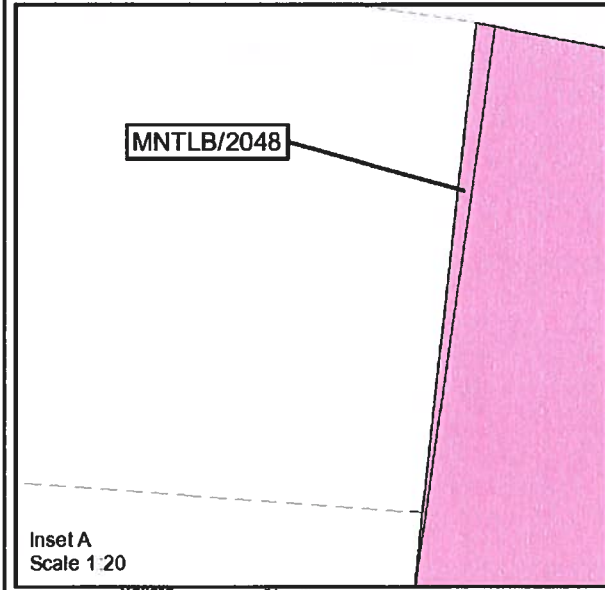
The Thames Water Utilities Limited (Thames Tideway Tunnel) Order 2014 (AS AMENDED) SI 2014 NO 2384
 Drawing Title
 Plan referred to in General Vesting Declaration No. 43 of The Thames Water Utilities Limited (Thames Tideway Tunnel) Order 2014 (AS AMENDED) SI 2014 NO 2384
 Status: For identification only
 Document Reference
 70054885-NTC-GVD-TR1-GVD43-0005

2024-1423

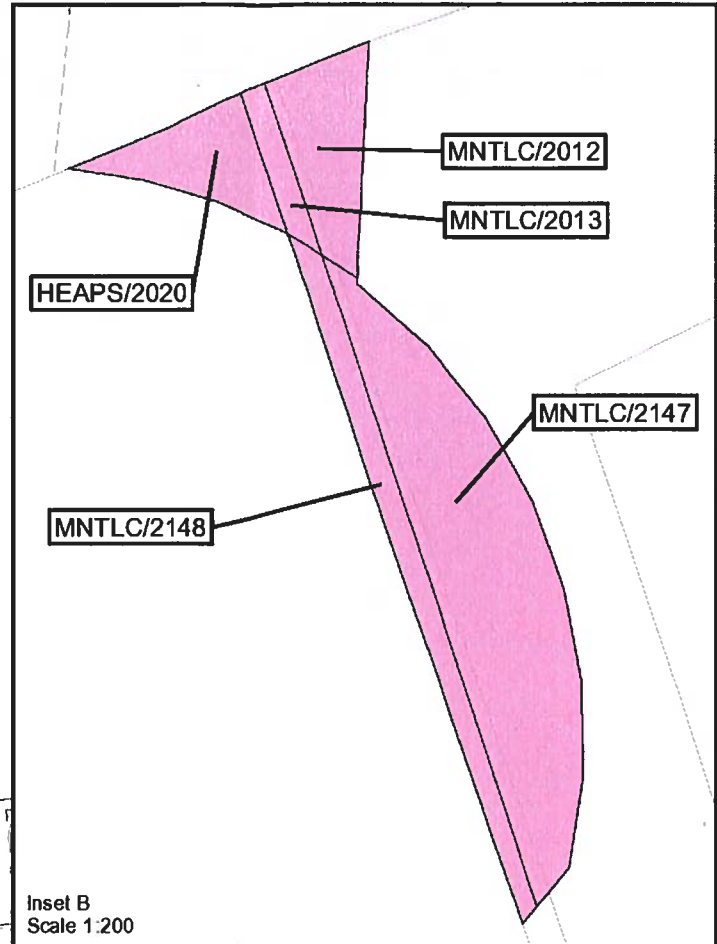
Rev #	Revision Date	Revision Details	Drawn	Check	Review	App'd
A	31/05/2024		AB	JH	LC	VB

Date: 31/05/2024
 Scale of A3
 1:1,250

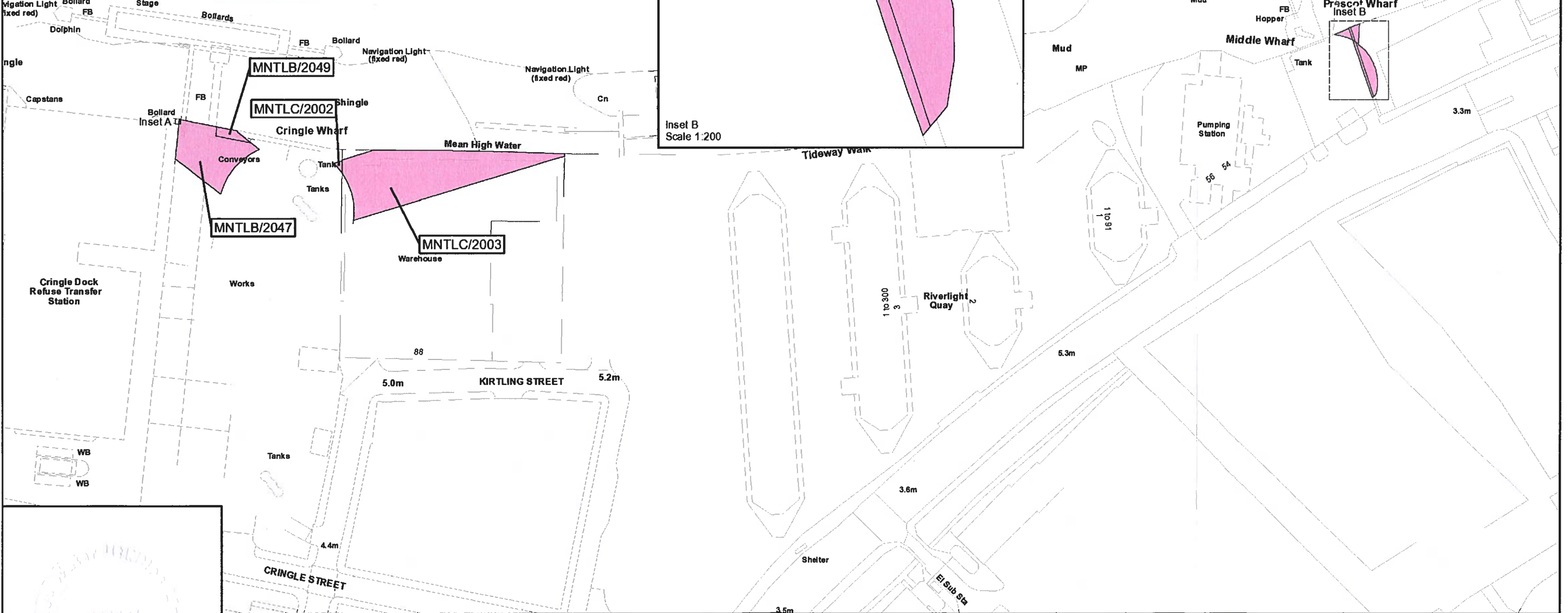
This map is reproduced from Ordnance Survey material with permission of Ordnance Survey on behalf of the Controller of Her Majesty's Stationery Office © Crown Copyright. Unauthorised reproduction infringes Crown Copyright and may lead to prosecution or civil proceedings. 100022432 2024



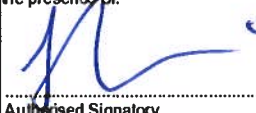
Inset A
Scale 1:20




Inset B
Scale 1:200



2024-1424

The Common seal of Thames Water Utilities Limited was affixed in the presence of:

 Authorised Signatory
 Dated: 12 June 2024

Key
 Permanent Acquisition of Land
 Jacqueline Sandison
 Senior Legal Counsel

0 30 60 Metres	
Rev #	Revision Date
A	31/05/2024
Drawn	Check
AB	JH
Reviewed	App'd
LC	VB



Thames Water
Tideway
 Date: 31/05/2024
 Scale of A3: 1:1,250

The Thames Water Utilities Limited (Thames Tideway Tunnel) Order 2014 (AS AMENDED) SI 2014 NO 2384
 Drawing Title: Plan referred to in General Vesting Declaration No. 43 of The Thames Water Utilities Limited (Thames Tideway Tunnel) Order 2014 (AS AMENDED) SI 2014 NO 2384
 Status: For identification only
 Document Reference: 70054885-NTC-GVD-TR1-GVD43-0008