

THE THAMES WATER UTILITIES LIMITED (THAMES TIDEWAY TUNNEL) ORDER 2014 (AS AMENDED)¹ SI 2014 NO.2384

GENERAL VESTING DECLARATION No. 34

This GENERAL VESTING DECLARATION NO. 34 is made the ^{9th} day of ^{May} 2024 by Thames Water Utilities Limited ("Thames Water").

WHEREAS:

- 1 On 3 September 2014 an order entitled The Thames Water Utilities Limited (Thames Tideway Tunnel) Order 2014 (as amended) SI 2014 No.2384 ("the Order") was made (and came into force on 24 September 2014) by the Secretaries of State for Communities and Local Government and Environment, Food and Rural Affairs under the powers conferred on them by the Planning Act 2008 authorising Thames Water to acquire the land specified in the Schedule hereto.
- 2 Notice of the making/confirmation of the Order was first published in accordance with section 134 of the Planning Act 2008 on 19 September 2014.
- 3 Preliminary notice of the intention to make a general vesting declaration in respect of any of the land described in the Schedule hereto was first published on **24 November 2023** in accordance with section 3 of the Compulsory Purchase (Vesting Declarations) Act 1981 ("the 1981 Act")², as modified by Article 34 of the Order.
- 4 That preliminary notice included the particulars specified in section 3(3) of the 1981 Act, as modified by Article 34 of the Order.
- 5 The notice referred to in (4) above specified the period of two months beginning with the date of its first publication as the period before the end of which this general vesting declaration could not be executed.

NOW THIS DEED WITNESSETH that, in exercise of the powers conferred on them by the Order and section 4 of the 1981 Act, Thames Water hereby declare:

The land described in the Schedule hereto being part of the land authorised to be acquired by the Order and more particularly delineated on the plans annexed hereto, together with the right to enter upon and take possession of the land shall vest in the Thames Water as from the end of the period of 28 days from the date on which the service of notices required by section 6 of the 1981 Act and in accordance with Article 34 of the Order is completed.

¹ The Order has been amended by (1) SI 2015/723 issued on 17 March 2015; (2) SI 2017/659 issued on 16 May 2017; (3) SI 2018/1262 issued 29 November 2018; (4) Notices of Variation Nos.1 and 2 Issued on 17 March 2015 and 17 August 2017 respectively in respect of the Deemed Marine Licence; (5) SI 2020/268 Issued on 10 March 2020; and (6) SI 2020/862 issued on 13 August 2020.

² The Version of the 1981 Act is the version that applied immediately prior to amendments brought in by the Housing and Planning Bill on 13 October 2015 and as modified by the Order.

SCHEDULE

The land

Reference number on attached notice plan	Description of the land	Associated Book of Reference plot number	Title Number
GRECT/2001	748.6 square metres of a stratum of subsoil below hardstanding (Chambers Wharf) where the upper surface of the stratum of the sub-soil is at a level equivalent to -39.1m (minus thirty nine point one metres) OD (Ordnance Datum) or thereabout at its western boundary and -39m (minus thirty nine metres) OD (Ordnance Datum) or thereabouts at its eastern boundary, and the lower surface of the stratum of the sub-soil is at a level equivalent to -57m (minus fifty seven metres) OD (Ordnance Datum) or thereabout at its western boundary and -56.9m (minus fifty six point nine metres) OD (Ordnance Datum) or thereabouts at its eastern boundary.	42 - London Borough of Southwark	SGL246760, TGL474848
GRECT/2002	125.4 square metres of a stratum of subsoil below public road (Chambers Street) where the upper surface of the stratum of the sub-soil is at a level equivalent to -39m (minus thirty nine metres) OD (Ordnance Datum) or thereabout at its western boundary and -39m (minus thirty nine metres) OD (Ordnance Datum) or thereabouts at its eastern boundary, and the lower surface of the stratum of the sub-soil is at a level equivalent to -56.9m (minus fifty six point nine metres) OD (Ordnance Datum) or thereabout at its western boundary and -56.8m (minus fifty six point eight metres) OD (Ordnance Datum) or thereabouts at its eastern boundary.	51 - London Borough of Southwark	LN64954
GRECT/2003	44.8 square metres of a stratum of subsoil below public footway (Chambers Street) where the upper surface of the stratum of the sub-soil is at a level equivalent to -39m (minus thirty nine metres) OD (Ordnance Datum) or thereabout at its western boundary and -39m (minus thirty nine metres) OD (Ordnance Datum) or thereabouts at its eastern boundary, and the lower surface of the stratum of the sub-soil is at a level equivalent to -56.9m (minus fifty six point nine metres) OD (Ordnance Datum) or thereabout at its western boundary and -56.8m (minus fifty six point eight metres) OD (Ordnance Datum) or thereabouts at its eastern boundary.	56 - London Borough of Southwark	LN64954
GRECT/2005	439 square metres of a stratum of subsoil below grassed area, shrubbery, hardstanding and forecourt (Wrayburn House) where the upper surface of the stratum of the sub-soil is at a level equivalent to -38.9m (minus thirty eight point nine metres) OD (Ordnance Datum) or thereabout at its western boundary and -38.8m (minus thirty eight point eight metres) OD (Ordnance Datum) or thereabouts at its eastern boundary, and the lower surface of the stratum of the sub-soil is at a level equivalent to -56.8m (minus fifty six point eight metres) OD (Ordnance Datum) or thereabout at its western boundary and -56.7m (minus fifty six point seven metres) OD (Ordnance Datum) or thereabouts at its eastern boundary.	58 - London Borough of Southwark	TGL91108
GRECT/2007	933.1 square metres of a stratum of subsoil below forecourt and grassed area (Wrayburn House) where the upper surface of the stratum of the sub-soil is at a level equivalent to -38.9m (minus thirty eight point nine metres) OD (Ordnance Datum) or thereabout at its western boundary and -38.8m (minus thirty eight point eight metres) OD (Ordnance Datum) or thereabouts at its eastern boundary, and the lower surface of the stratum of the sub-soil is at a level equivalent to -56.8m (minus fifty six point eight metres) OD (Ordnance Datum) or thereabout at its western boundary and -56.6m (minus fifty six point six metres) OD (Ordnance Datum) or thereabouts at its eastern boundary.	59 - London Borough of Southwark	SGL174921

GRECT/2008	0.5 square metres of a stratum of subsoil below public road, traffic island and footways (Bevington Street and Scott Lidgett Crescent) where the upper surface of the stratum of the sub-soil is at a level equivalent to -38.8m (minus thirty eight point eight metres) OD (Ordnance Datum) or thereabout at its western boundary and -38.8m (minus thirty eight point eight metres) OD (Ordnance Datum) or thereabouts at its eastern boundary, and the lower surface of the stratum of the sub-soil is at a level equivalent to -56.6m (minus fifty six point six metres) OD (Ordnance Datum) or thereabout at its western boundary and -56.6m (minus fifty six point six metres) OD (Ordnance Datum) or thereabouts at its eastern boundary.	62 - London Borough of Southwark	Unregistered
GRECT/2009	334.8 square metres of a stratum of subsoil below forecourt and grassed area (Wrayburn House) where the upper surface of the stratum of the sub-soil is at a level equivalent to -38.8m (minus thirty eight point eight metres) OD (Ordnance Datum) or thereabout at its western boundary and -38.7m (minus thirty eight point seven metres) OD (Ordnance Datum) or thereabouts at its eastern boundary, and the lower surface of the stratum of the sub-soil is at a level equivalent to -56.6m (minus fifty six point six metres) OD (Ordnance Datum) or thereabout at its western boundary and -56.5m (minus fifty six point five metres) OD (Ordnance Datum) or thereabouts at its eastern boundary.	59 - London Borough of Southwark	SGL174921
GRECT/2010	439.5 square metres of a stratum of subsoil below public road, traffic island and footways (Bevington Street and Scott Lidgett Crescent) where the upper surface of the stratum of the sub-soil is at a level equivalent to -38.7m (minus thirty eight point seven metres) OD (Ordnance Datum) or thereabout at its western boundary and -38.6m (minus thirty eight point six metres) OD (Ordnance Datum) or thereabouts at its eastern boundary, and the lower surface of the stratum of the sub-soil is at a level equivalent to -56.6m (minus fifty six point six metres) OD (Ordnance Datum) or thereabout at its western boundary and -56.5m (minus fifty six point five metres) OD (Ordnance Datum) or thereabouts at its eastern boundary.	62 - London Borough of Southwark	SGL214305
GRECT/2011	74.6 square metres of a stratum of subsoil below grassed area (Dartle Court) where the upper surface of the stratum of the sub-soil is at a level equivalent to -38.7m (minus thirty eight point seven metres) OD (Ordnance Datum) or thereabout at its western boundary and -38.7m (minus thirty eight point seven metres) OD (Ordnance Datum) or thereabouts at its eastern boundary, and the lower surface of the stratum of the sub-soil is at a level equivalent to -56.6m (minus fifty six point six metres) OD (Ordnance Datum) or thereabout at its western boundary and -56.5m (minus fifty six point five metres) OD (Ordnance Datum) or thereabouts at its eastern boundary.	63 - London Borough of Southwark	SGL174921
GRECT/2012	32.7 square metres of a stratum of subsoil below public road and footways (Scott Lidgett Crescent) where the upper surface of the stratum of the sub-soil is at a level equivalent to -38.7m (minus thirty eight point seven metres) OD (Ordnance Datum) or thereabout at its western boundary and -38.6m (minus thirty eight point six metres) OD (Ordnance Datum) or thereabouts at its eastern boundary, and the lower surface of the stratum of the sub-soil is at a level equivalent to -56.5m (minus fifty six point five metres) OD (Ordnance Datum) or thereabout at its western boundary and -56.5m (minus fifty six point five metres) OD (Ordnance Datum) or thereabouts at its eastern boundary.	64 - London Borough of Southwark	SGL214305
GRECT/2013	481.8 square metres of a stratum of subsoil below grassed area and hardstanding (125 to 143, Jamaica Road) where the upper surface of the stratum of the sub-soil is at a level equivalent to -38.6m (minus thirty eight point six metres) OD (Ordnance Datum) or thereabout at its western boundary and -38.5m (minus thirty eight point five metres) OD (Ordnance Datum) or thereabouts at its eastern boundary, and the lower surface of the stratum of the sub-soil is at a level equivalent to -56.5m (minus fifty six point five metres) OD (Ordnance Datum) or thereabout at its western boundary and -56.4m	65 - London Borough of Southwark	SGL214305

	(minus fifty six point four metres) OD (Ordnance Datum) or thereabouts at its eastern boundary.		
GRECT/2014	23.6 square metres of a stratum of subsoil below flats (65, 73 and 81, Spenlow House) and shop (125, Jamaica Road) where the upper surface of the stratum of the sub-soil is at a level equivalent to -38.6m (minus thirty eight point six metres) OD (Ordnance Datum) or thereabout at its western boundary and -38.6m (minus thirty eight point six metres) OD (Ordnance Datum) or thereabouts at its eastern boundary, and the lower surface of the stratum of the sub-soil is at a level equivalent to -56.5m (minus fifty six point five metres) OD (Ordnance Datum) or thereabout at its western boundary and -56.5m (minus fifty six point five metres) OD (Ordnance Datum) or thereabouts at its eastern boundary.	66 - London Borough of Southwark	SGL214305, TGL337364
GRECT/2015	410.8 square metres of a stratum of subsoil below public road and traffic island (Jamaica Road, A200) where the upper surface of the stratum of the sub-soil is at a level equivalent to -38.5m (minus thirty eight point five metres) OD (Ordnance Datum) or thereabout at its western boundary and -38.5m (minus thirty eight point five metres) OD (Ordnance Datum) or thereabouts at its eastern boundary, and the lower surface of the stratum of the sub-soil is at a level equivalent to -56.4m (minus fifty six point four metres) OD (Ordnance Datum) or thereabout at its western boundary and -56.4m (minus fifty six point four metres) OD (Ordnance Datum) or thereabouts at its eastern boundary.	67 - London Borough of Southwark	SGL214305
GRECT/2016	1 square metres of a stratum of subsoil below public road and footway (St. James's Road) where the upper surface of the stratum of the sub-soil is at a level equivalent to -38.5m (minus thirty eight point five metres) OD (Ordnance Datum) or thereabout at its western boundary and -38.5m (minus thirty eight point five metres) OD (Ordnance Datum) or thereabouts at its eastern boundary, and the lower surface of the stratum of the sub-soil is at a level equivalent to -56.4m (minus fifty six point four metres) OD (Ordnance Datum) or thereabout at its western boundary and -56.4m (minus fifty six point four metres) OD (Ordnance Datum) or thereabouts at its eastern boundary.	68 - London Borough of Southwark	Unregistered
GRECT/2017	15.3 square metres of a stratum of subsoil below grassed area (Bromfield Court) where the upper surface of the stratum of the sub-soil is at a level equivalent to -38.5m (minus thirty eight point five metres) OD (Ordnance Datum) or thereabout at its western boundary and -38.5m (minus thirty eight point five metres) OD (Ordnance Datum) or thereabouts at its eastern boundary, and the lower surface of the stratum of the sub-soil is at a level equivalent to -56.3m (minus fifty six point three metres) OD (Ordnance Datum) or thereabout at its western boundary and -56.3m (minus fifty six point three metres) OD (Ordnance Datum) or thereabouts at its eastern boundary.	69 - London Borough of Southwark	TGL303755
GRECT/2018	27.4 square metres of a stratum of subsoil below grassed area (Bromfield Court) where the upper surface of the stratum of the sub-soil is at a level equivalent to -38.5m (minus thirty eight point five metres) OD (Ordnance Datum) or thereabout at its western boundary and -38.5m (minus thirty eight point five metres) OD (Ordnance Datum) or thereabouts at its eastern boundary, and the lower surface of the stratum of the sub-soil is at a level equivalent to -56.3m (minus fifty six point three metres) OD (Ordnance Datum) or thereabout at its western boundary and -56.3m (minus fifty six point three metres) OD (Ordnance Datum) or thereabouts at its eastern boundary.	70 - London Borough of Southwark	TGL228990
GRECT/2019	124.9 square metres of a stratum of subsoil below flats (98, Jamaica Road) where the upper surface of the stratum of the sub-soil is at a level equivalent to -38.5m (minus thirty eight point five metres) OD (Ordnance Datum) or thereabout at its western boundary and -38.4m (minus thirty eight point four metres) OD (Ordnance Datum) or thereabouts at its eastern boundary, and the lower surface of the stratum of the sub-soil is at a level equivalent to -56.3m (minus fifty six point three metres) OD (Ordnance Datum) or thereabout at its	71 - London Borough of Southwark	LN190148, TGL212534, TGL213898, TGL231232

	western boundary and -56.3m (minus fifty six point three metres) OD (Ordnance Datum) or thereabouts at its eastern boundary.		
GRECT/2021	67.2 square metres of a stratum of subsoil below flats (9 and 22, Bromfield Court) where the upper surface of the stratum of the sub-soil is at a level equivalent to -38.4m (minus thirty eight point four metres) OD (Ordnance Datum) or thereabout at its western boundary and -38.4m (minus thirty eight point four metres) OD (Ordnance Datum) or thereabouts at its eastern boundary, and the lower surface of the stratum of the sub-soil is at a level equivalent to -56.3m (minus fifty six point three metres) OD (Ordnance Datum) or thereabout at its western boundary and -56.3m (minus fifty six point three metres) OD (Ordnance Datum) or thereabouts at its eastern boundary.	75 - London Borough of Southwark	TGL228990, TGL83045
GRECT/2022	62.2 square metres of a stratum of subsoil below flats (10 and 23, Bromfield Court) where the upper surface of the stratum of the sub-soil is at a level equivalent to -38.4m (minus thirty eight point four metres) OD (Ordnance Datum) or thereabout at its western boundary and -38.4m (minus thirty eight point four metres) OD (Ordnance Datum) or thereabouts at its eastern boundary, and the lower surface of the stratum of the sub-soil is at a level equivalent to -56.3m (minus fifty six point three metres) OD (Ordnance Datum) or thereabout at its western boundary and -56.3m (minus fifty six point three metres) OD (Ordnance Datum) or thereabouts at its eastern boundary.	76 - London Borough of Southwark	TGL228990, TGL448085
GRECT/2023	58.3 square metres of a stratum of subsoil below flats (11 and 24, Bromfield Court) where the upper surface of the stratum of the sub-soil is at a level equivalent to -38.4m (minus thirty eight point four metres) OD (Ordnance Datum) or thereabout at its western boundary and -38.4m (minus thirty eight point four metres) OD (Ordnance Datum) or thereabouts at its eastern boundary, and the lower surface of the stratum of the sub-soil is at a level equivalent to -56.3m (minus fifty six point three metres) OD (Ordnance Datum) or thereabout at its western boundary and -56.3m (minus fifty six point three metres) OD (Ordnance Datum) or thereabouts at its eastern boundary.	77 - London Borough of Southwark	TGL228990, TGL497510
GRECT/2024	55.6 square metres of a stratum of subsoil below flats (12 and 25, Bromfield Court) where the upper surface of the stratum of the sub-soil is at a level equivalent to -38.4m (minus thirty eight point four metres) OD (Ordnance Datum) or thereabout at its western boundary and -38.4m (minus thirty eight point four metres) OD (Ordnance Datum) or thereabouts at its eastern boundary, and the lower surface of the stratum of the sub-soil is at a level equivalent to -56.3m (minus fifty six point three metres) OD (Ordnance Datum) or thereabout at its western boundary and -56.3m (minus fifty six point three metres) OD (Ordnance Datum) or thereabouts at its eastern boundary.	78 - London Borough of Southwark	TGL228990, SGL362034
GRECT/2025	555.3 square metres of a stratum of subsoil below grassed area, garden, hardstanding, storage, access and car park (Bromfield Court) where the upper surface of the stratum of the sub-soil is at a level equivalent to -38.4m (minus thirty eight point four metres) OD (Ordnance Datum) or thereabout at its western boundary and -38.3m (minus thirty eight point three metres) OD (Ordnance Datum) or thereabouts at its eastern boundary, and the lower surface of the stratum of the sub-soil is at a level equivalent to -56.3m (minus fifty six point three metres) OD (Ordnance Datum) or thereabout at its western boundary and -56.1m (minus fifty six point one metres) OD (Ordnance Datum) or thereabouts at its eastern boundary.	74 - London Borough of Southwark	TGL228990
GRECT/2026	140.3 square metres of a stratum of subsoil below house and garden (41, St. James's Road) where the upper surface of the stratum of the sub-soil is at a level equivalent to -38.4m (minus thirty eight point four metres) OD (Ordnance Datum) or thereabout at its western boundary and -38.4m (minus thirty eight point four metres) OD (Ordnance Datum) or thereabouts at its eastern boundary, and the lower surface of the stratum of the sub-soil is at a level equivalent to -56.2m (minus fifty six point two metres) OD (Ordnance Datum) or thereabout at its western boundary and -56.2m (minus fifty six point two metres) OD (Ordnance Datum) or thereabouts at its eastern	79 - London Borough of Southwark	TGL228990

	boundary.		
GRECT/2027	81.3 square metres of a stratum of subsoil below house and garden (43, St. James's Road) where the upper surface of the stratum of the sub-soil is at a level equivalent to -38.4m (minus thirty eight point four metres) OD (Ordnance Datum) or thereabout at its western boundary and -38.4m (minus thirty eight point four metres) OD (Ordnance Datum) or thereabouts at its eastern boundary, and the lower surface of the stratum of the sub-soil is at a level equivalent to -56.2m (minus fifty six point two metres) OD (Ordnance Datum) or thereabout at its western boundary and -56.2m (minus fifty six point two metres) OD (Ordnance Datum) or thereabouts at its eastern boundary.	80 - London Borough of Southwark	TGL129839
GRECT/2028	70.7 square metres of a stratum of subsoil below house and garden (45, St. James's Road) where the upper surface of the stratum of the sub-soil is at a level equivalent to -38.4m (minus thirty eight point four metres) OD (Ordnance Datum) or thereabout at its western boundary and -38.4m (minus thirty eight point four metres) OD (Ordnance Datum) or thereabouts at its eastern boundary, and the lower surface of the stratum of the sub-soil is at a level equivalent to -56.2m (minus fifty six point two metres) OD (Ordnance Datum) or thereabout at its western boundary and -56.2m (minus fifty six point two metres) OD (Ordnance Datum) or thereabouts at its eastern boundary.	81 - London Borough of Southwark	TGL228990
GRECT/2029	73.8 square metres of a stratum of subsoil below house and garden (47, St. James's Road) where the upper surface of the stratum of the sub-soil is at a level equivalent to -38.4m (minus thirty eight point four metres) OD (Ordnance Datum) or thereabout at its western boundary and -38.4m (minus thirty eight point four metres) OD (Ordnance Datum) or thereabouts at its eastern boundary, and the lower surface of the stratum of the sub-soil is at a level equivalent to -56.2m (minus fifty six point two metres) OD (Ordnance Datum) or thereabout at its western boundary and -56.2m (minus fifty six point two metres) OD (Ordnance Datum) or thereabouts at its eastern boundary.	82 - London Borough of Southwark	TGL228990
GRECT/2030	60.9 square metres of a stratum of subsoil below house and garden (49, St. James's Road) where the upper surface of the stratum of the sub-soil is at a level equivalent to -38.4m (minus thirty eight point four metres) OD (Ordnance Datum) or thereabout at its western boundary and -38.3m (minus thirty eight point three metres) OD (Ordnance Datum) or thereabouts at its eastern boundary, and the lower surface of the stratum of the sub-soil is at a level equivalent to -56.2m (minus fifty six point two metres) OD (Ordnance Datum) or thereabout at its western boundary and -56.2m (minus fifty six point two metres) OD (Ordnance Datum) or thereabouts at its eastern boundary.	83 - London Borough of Southwark	TGL228990
GRECT/2031	54.5 square metres of a stratum of subsoil below house and garden (51, St. James's Road) where the upper surface of the stratum of the sub-soil is at a level equivalent to -38.3m (minus thirty eight point three metres) OD (Ordnance Datum) or thereabout at its western boundary and -38.3m (minus thirty eight point three metres) OD (Ordnance Datum) or thereabouts at its eastern boundary, and the lower surface of the stratum of the sub-soil is at a level equivalent to -56.2m (minus fifty six point two metres) OD (Ordnance Datum) or thereabout at its western boundary and -56.2m (minus fifty six point two metres) OD (Ordnance Datum) or thereabouts at its eastern boundary.	84 - London Borough of Southwark	TGL228990
GRECT/2032	50.8 square metres of a stratum of subsoil below house and garden (53, St. James's Road) where the upper surface of the stratum of the sub-soil is at a level equivalent to -38.3m (minus thirty eight point three metres) OD (Ordnance Datum) or thereabout at its western boundary and -38.3m (minus thirty eight point three metres) OD (Ordnance Datum) or thereabouts at its eastern boundary, and the lower surface of the stratum of the sub-soil is at a level equivalent to	85 - London Borough of Southwark	TGL228990

	-56.2m (minus fifty six point two metres) OD (Ordnance Datum) or thereabout at its western boundary and -56.2m (minus fifty six point two metres) OD (Ordnance Datum) or thereabouts at its eastern boundary.		
GRECT/2033	39.5 square metres of a stratum of subsoil below house and garden (55, St. James's Road) where the upper surface of the stratum of the sub-soil is at a level equivalent to -38.3m (minus thirty eight point three metres) OD (Ordnance Datum) or thereabout at its western boundary and -38.3m (minus thirty eight point three metres) OD (Ordnance Datum) or thereabouts at its eastern boundary, and the lower surface of the stratum of the sub-soil is at a level equivalent to -56.2m (minus fifty six point two metres) OD (Ordnance Datum) or thereabout at its western boundary and -56.2m (minus fifty six point two metres) OD (Ordnance Datum) or thereabouts at its eastern boundary.	86 - London Borough of Southwark	TGL228990
GRECT/2034	25.7 square metres of a stratum of subsoil below house and garden (57, St. James's Road) where the upper surface of the stratum of the sub-soil is at a level equivalent to -38.3m (minus thirty eight point three metres) OD (Ordnance Datum) or thereabout at its western boundary and -38.3m (minus thirty eight point three metres) OD (Ordnance Datum) or thereabouts at its eastern boundary, and the lower surface of the stratum of the sub-soil is at a level equivalent to -56.2m (minus fifty six point two metres) OD (Ordnance Datum) or thereabout at its western boundary and -56.1m (minus fifty six point one metres) OD (Ordnance Datum) or thereabouts at its eastern boundary.	87 - London Borough of Southwark	TGL228990
GRECT/2035	1 square metres of a stratum of subsoil below garden (59, St. James's Road) where the upper surface of the stratum of the sub-soil is at a level equivalent to -38.3m (minus thirty eight point three metres) OD (Ordnance Datum) or thereabout at its western boundary and -38.3m (minus thirty eight point three metres) OD (Ordnance Datum) or thereabouts at its eastern boundary, and the lower surface of the stratum of the sub-soil is at a level equivalent to -56.2m (minus fifty six point two metres) OD (Ordnance Datum) or thereabout at its western boundary and -56.1m (minus fifty six point one metres) OD (Ordnance Datum) or thereabouts at its eastern boundary.	88 - London Borough of Southwark	TGL228990
GRECT/2036	40.1 square metres of a stratum of subsoil below house and garden (5, Tranton Road) where the upper surface of the stratum of the sub-soil is at a level equivalent to -38.3m (minus thirty eight point three metres) OD (Ordnance Datum) or thereabout at its western boundary and -38.3m (minus thirty eight point three metres) OD (Ordnance Datum) or thereabouts at its eastern boundary, and the lower surface of the stratum of the sub-soil is at a level equivalent to -56.1m (minus fifty six point one metres) OD (Ordnance Datum) or thereabout at its western boundary and -56.1m (minus fifty six point one metres) OD (Ordnance Datum) or thereabouts at its eastern boundary.	90 - London Borough of Southwark	TGL228990
GRECT/2037	94.6 square metres of a stratum of subsoil below house and garden (7, Tranton Road) where the upper surface of the stratum of the sub-soil is at a level equivalent to -38.3m (minus thirty eight point three metres) OD (Ordnance Datum) or thereabout at its western boundary and -38.3m (minus thirty eight point three metres) OD (Ordnance Datum) or thereabouts at its eastern boundary, and the lower surface of the stratum of the sub-soil is at a level equivalent to -56.2m (minus fifty six point two metres) OD (Ordnance Datum) or thereabout at its western boundary and -56.1m (minus fifty six point one metres) OD (Ordnance Datum) or thereabouts at its eastern boundary.	91 - London Borough of Southwark	SGL440294
GRECT/2038	100.4 square metres of a stratum of subsoil below house and garden (9, Tranton Road) where the upper surface of the stratum of the sub-soil is at a level equivalent to -38.3m (minus thirty eight point three metres) OD (Ordnance Datum) or thereabout at its western boundary and -38.3m (minus thirty eight point three metres) OD (Ordnance Datum) or thereabouts at its eastern boundary, and the lower surface of the stratum of the sub-soil is at a level equivalent to -56.1m (minus	92 - London Borough of Southwark	TGL228990

	fifty six point one metres) OD (Ordnance Datum) or thereabout at its western boundary and -56.1m (minus fifty six point one metres) OD (Ordnance Datum) or thereabouts at its eastern boundary.		
GRECT/2039	90 square metres of a stratum of subsoil below house and garden (11, Tranton Road) where the upper surface of the stratum of the sub-soil is at a level equivalent to -38.3m (minus thirty eight point three metres) OD (Ordnance Datum) or thereabout at its western boundary and -38.3m (minus thirty eight point three metres) OD (Ordnance Datum) or thereabouts at its eastern boundary, and the lower surface of the stratum of the sub-soil is at a level equivalent to -56.1m (minus fifty six point one metres) OD (Ordnance Datum) or thereabout at its western boundary and -56.1m (minus fifty six point one metres) OD (Ordnance Datum) or thereabouts at its eastern boundary.	93 - London Borough of Southwark	TGL469978
GRECT/2040	16.7 square metres of a stratum of subsoil below house and garden (13, Tranton Road) where the upper surface of the stratum of the sub-soil is at a level equivalent to -38.3m (minus thirty eight point three metres) OD (Ordnance Datum) or thereabout at its western boundary and -38.3m (minus thirty eight point three metres) OD (Ordnance Datum) or thereabouts at its eastern boundary, and the lower surface of the stratum of the sub-soil is at a level equivalent to -56.1m (minus fifty six point one metres) OD (Ordnance Datum) or thereabout at its western boundary and -56.1m (minus fifty six point one metres) OD (Ordnance Datum) or thereabouts at its eastern boundary.	94 - London Borough of Southwark	TGL111818
GRECT/2041	263.3 square metres of a stratum of subsoil below private road (Tranton Road) where the upper surface of the stratum of the sub-soil is at a level equivalent to -38.3m (minus thirty eight point three metres) OD (Ordnance Datum) or thereabout at its western boundary and -38.2m (minus thirty eight point two metres) OD (Ordnance Datum) or thereabouts at its eastern boundary, and the lower surface of the stratum of the sub-soil is at a level equivalent to -56.1m (minus fifty six point one metres) OD (Ordnance Datum) or thereabout at its western boundary and -56.1m (minus fifty six point one metres) OD (Ordnance Datum) or thereabouts at its eastern boundary.	96 - London Borough of Southwark	TGL228990
GRECT/2042	107.1 square metres of a stratum of subsoil below house and garden (12, Tranton Road) where the upper surface of the stratum of the sub-soil is at a level equivalent to -38.2m (minus thirty eight point two metres) OD (Ordnance Datum) or thereabout at its western boundary and -38.2m (minus thirty eight point two metres) OD (Ordnance Datum) or thereabouts at its eastern boundary, and the lower surface of the stratum of the sub-soil is at a level equivalent to -56.1m (minus fifty six point one metres) OD (Ordnance Datum) or thereabout at its western boundary and -56.1m (minus fifty six point one metres) OD (Ordnance Datum) or thereabouts at its eastern boundary.	100 - London Borough of Southwark	SGL496469
GRECT/2043	109 square metres of a stratum of subsoil below house and garden (10, Tranton Road) where the upper surface of the stratum of the sub-soil is at a level equivalent to -38.2m (minus thirty eight point two metres) OD (Ordnance Datum) or thereabout at its western boundary and -38.2m (minus thirty eight point two metres) OD (Ordnance Datum) or thereabouts at its eastern boundary, and the lower surface of the stratum of the sub-soil is at a level equivalent to -56.1m (minus fifty six point one metres) OD (Ordnance Datum) or thereabout at its western boundary and -56m (minus fifty six metres) OD (Ordnance Datum) or thereabouts at its eastern boundary.	99 - London Borough of Southwark	TGL228990
GRECT/2044	59.8 square metres of a stratum of subsoil below house and garden (8, Tranton Road) where the upper surface of the stratum of the sub-soil is at a level equivalent to -38.2m (minus thirty eight point two metres) OD (Ordnance Datum) or thereabout at its western boundary and -38.2m (minus thirty eight point two metres) OD (Ordnance Datum) or thereabouts at its eastern boundary, and the lower surface of the stratum of the sub-soil is at a level equivalent to -56.1m (minus	98 - London Borough of Southwark	TGL228990

	fifty six point one metres) OD (Ordnance Datum) or thereabout at its western boundary and -56m (minus fifty six metres) OD (Ordnance Datum) or thereabouts at its eastern boundary.		
GRECT/2045	142.7 square metres of a stratum of subsoil below gardens and footway (John McKenna Walk) where the upper surface of the stratum of the sub-soil is at a level equivalent to -38.2m (minus thirty eight point two metres) OD (Ordnance Datum) or thereabout at its western boundary and -38.1m (minus thirty eight point one metres) OD (Ordnance Datum) or thereabouts at its eastern boundary, and the lower surface of the stratum of the sub-soil is at a level equivalent to -56m (minus fifty six metres) OD (Ordnance Datum) or thereabout at its western boundary and -56m (minus fifty six metres) OD (Ordnance Datum) or thereabouts at its eastern boundary.	101 - London Borough of Southwark	TGL228990
GRECT/2046	1.7 square metres of a stratum of subsoil below house and garden (3, John McKenna Walk) where the upper surface of the stratum of the sub-soil is at a level equivalent to -38.2m (minus thirty eight point two metres) OD (Ordnance Datum) or thereabout at its western boundary and -38.2m (minus thirty eight point two metres) OD (Ordnance Datum) or thereabouts at its eastern boundary, and the lower surface of the stratum of the sub-soil is at a level equivalent to -56m (minus fifty six metres) OD (Ordnance Datum) or thereabout at its western boundary and -56m (minus fifty six metres) OD (Ordnance Datum) or thereabouts at its eastern boundary.	103 - London Borough of Southwark	TGL228990
GRECT/2047	69 square metres of a stratum of subsoil below house and garden (2, John McKenna Walk) where the upper surface of the stratum of the sub-soil is at a level equivalent to -38.2m (minus thirty eight point two metres) OD (Ordnance Datum) or thereabout at its western boundary and -38.2m (minus thirty eight point two metres) OD (Ordnance Datum) or thereabouts at its eastern boundary, and the lower surface of the stratum of the sub-soil is at a level equivalent to -56m (minus fifty six metres) OD (Ordnance Datum) or thereabout at its western boundary and -56m (minus fifty six metres) OD (Ordnance Datum) or thereabouts at its eastern boundary.	104 - London Borough of Southwark	TGL228990
GRECT/2048	31.5 square metres of a stratum of subsoil below house and garden (9, John McKenna Walk) where the upper surface of the stratum of the sub-soil is at a level equivalent to -38.2m (minus thirty eight point two metres) OD (Ordnance Datum) or thereabout at its western boundary and -38.2m (minus thirty eight point two metres) OD (Ordnance Datum) or thereabouts at its eastern boundary, and the lower surface of the stratum of the sub-soil is at a level equivalent to -56m (minus fifty six metres) OD (Ordnance Datum) or thereabout at its western boundary and -56m (minus fifty six metres) OD (Ordnance Datum) or thereabouts at its eastern boundary.	112 - London Borough of Southwark	TGL228990
GRECT/2049	54.4 square metres of a stratum of subsoil below house and garden (4, John McKenna Walk) where the upper surface of the stratum of the sub-soil is at a level equivalent to -38.2m (minus thirty eight point two metres) OD (Ordnance Datum) or thereabout at its western boundary and -38.2m (minus thirty eight point two metres) OD (Ordnance Datum) or thereabouts at its eastern boundary, and the lower surface of the stratum of the sub-soil is at a level equivalent to -56m (minus fifty six metres) OD (Ordnance Datum) or thereabout at its western boundary and -56m (minus fifty six metres) OD (Ordnance Datum) or thereabouts at its eastern boundary.	105 - London Borough of Southwark	TGL228990
GRECT/2050	45.1 square metres of a stratum of subsoil below house and garden (11, John McKenna Walk) where the upper surface of the stratum of the sub-soil is at a level equivalent to -38.2m (minus thirty eight point two metres) OD (Ordnance Datum) or thereabout at its western boundary and -38.1m (minus thirty eight point one metres) OD (Ordnance Datum) or thereabouts at its eastern boundary, and the lower surface of the stratum of the sub-soil is at a level equivalent to -56m (minus fifty six metres) OD (Ordnance Datum) or thereabout at its western boundary and -56m (minus fifty six metres) OD (Ordnance Datum) or thereabouts at its eastern boundary.	114 - London Borough of Southwark	TGL60683

GRECT/2051	40.3 square metres of a stratum of subsoil below house and garden (6, John McKenna Walk) where the upper surface of the stratum of the sub-soil is at a level equivalent to -38.2m (minus thirty eight point two metres) OD (Ordnance Datum) or thereabout at its western boundary and -38.2m (minus thirty eight point two metres) OD (Ordnance Datum) or thereabouts at its eastern boundary, and the lower surface of the stratum of the sub-soil is at a level equivalent to -56m (minus fifty six metres) OD (Ordnance Datum) or thereabout at its western boundary and -56m (minus fifty six metres) OD (Ordnance Datum) or thereabouts at its eastern boundary.	106 - London Borough of Southwark	TGL47057
GRECT/2052	62.5 square metres of a stratum of subsoil below house and garden (13, John McKenna Walk) where the upper surface of the stratum of the sub-soil is at a level equivalent to -38.2m (minus thirty eight point two metres) OD (Ordnance Datum) or thereabout at its western boundary and -38.1m (minus thirty eight point one metres) OD (Ordnance Datum) or thereabouts at its eastern boundary, and the lower surface of the stratum of the sub-soil is at a level equivalent to -56m (minus fifty six metres) OD (Ordnance Datum) or thereabout at its western boundary and -56m (minus fifty six metres) OD (Ordnance Datum) or thereabouts at its eastern boundary.	115 - London Borough of Southwark	TGL11635
GRECT/2053	27.9 square metres of a stratum of subsoil below house and garden (8, John McKenna Walk) where the upper surface of the stratum of the sub-soil is at a level equivalent to -38.2m (minus thirty eight point two metres) OD (Ordnance Datum) or thereabout at its western boundary and -38.1m (minus thirty eight point one metres) OD (Ordnance Datum) or thereabouts at its eastern boundary, and the lower surface of the stratum of the sub-soil is at a level equivalent to -56m (minus fifty six metres) OD (Ordnance Datum) or thereabout at its western boundary and -56m (minus fifty six metres) OD (Ordnance Datum) or thereabouts at its eastern boundary.	107 - London Borough of Southwark	TGL210716
GRECT/2054	75.7 square metres of a stratum of subsoil below house and garden (15, John McKenna Walk) where the upper surface of the stratum of the sub-soil is at a level equivalent to -38.1m (minus thirty eight point one metres) OD (Ordnance Datum) or thereabout at its western boundary and -38.1m (minus thirty eight point one metres) OD (Ordnance Datum) or thereabouts at its eastern boundary, and the lower surface of the stratum of the sub-soil is at a level equivalent to -56m (minus fifty six metres) OD (Ordnance Datum) or thereabout at its western boundary and -56m (minus fifty six metres) OD (Ordnance Datum) or thereabouts at its eastern boundary.	116 - London Borough of Southwark	TGL2618
GRECT/2055	11.1 square metres of a stratum of subsoil below house and garden (10, John McKenna Walk) where the upper surface of the stratum of the sub-soil is at a level equivalent to -38.1m (minus thirty eight point one metres) OD (Ordnance Datum) or thereabout at its western boundary and -38.1m (minus thirty eight point one metres) OD (Ordnance Datum) or thereabouts at its eastern boundary, and the lower surface of the stratum of the sub-soil is at a level equivalent to -56m (minus fifty six metres) OD (Ordnance Datum) or thereabout at its western boundary and -56m (minus fifty six metres) OD (Ordnance Datum) or thereabouts at its eastern boundary.	108 - London Borough of Southwark	TGL35549
GRECT/2056	91.4 square metres of a stratum of subsoil below house and garden (17, John McKenna Walk) where the upper surface of the stratum of the sub-soil is at a level equivalent to -38.1m (minus thirty eight point one metres) OD (Ordnance Datum) or thereabout at its western boundary and -38.1m (minus thirty eight point one metres) OD (Ordnance Datum) or thereabouts at its eastern boundary, and the lower surface of the stratum of the sub-soil is at a level equivalent to -56m (minus fifty six metres) OD (Ordnance Datum) or thereabout at its western boundary and -56m (minus fifty six metres) OD (Ordnance Datum) or thereabouts at its eastern boundary.	117 - London Borough of Southwark	TGL37173
GRECT/2057	0.7 square metres of a stratum of subsoil below house and garden (12, John McKenna Walk) where the upper surface of the stratum of the sub-soil is at a level equivalent to -38.1m (minus thirty eight point	109 - London Borough of Southwark	TGL19948

	one metres) OD (Ordnance Datum) or thereabout at its western boundary and -38.1m (minus thirty eight point one metres) OD (Ordnance Datum) or thereabouts at its eastern boundary, and the lower surface of the stratum of the sub-soil is at a level equivalent to -56m (minus fifty six metres) OD (Ordnance Datum) or thereabout at its western boundary and -56m (minus fifty six metres) OD (Ordnance Datum) or thereabouts at its eastern boundary.		
GRECT/2058	95.7 square metres of a stratum of subsoil below flats and garden (19 and 21, John McKenna Walk) where the upper surface of the stratum of the sub-soil is at a level equivalent to -38.1m (minus thirty eight point one metres) OD (Ordnance Datum) or thereabout at its western boundary and -38.1m (minus thirty eight point one metres) OD (Ordnance Datum) or thereabouts at its eastern boundary, and the lower surface of the stratum of the sub-soil is at a level equivalent to -56m (minus fifty six metres) OD (Ordnance Datum) or thereabout at its western boundary and -56m (minus fifty six metres) OD (Ordnance Datum) or thereabouts at its eastern boundary.	118 - London Borough of Southwark	TGL228990
GRECT/2059	97.1 square metres of a stratum of subsoil below gardens and footway (John McKenna Walk) where the upper surface of the stratum of the sub-soil is at a level equivalent to -38.1m (minus thirty eight point one metres) OD (Ordnance Datum) or thereabout at its western boundary and -38.1m (minus thirty eight point one metres) OD (Ordnance Datum) or thereabouts at its eastern boundary, and the lower surface of the stratum of the sub-soil is at a level equivalent to -56m (minus fifty six metres) OD (Ordnance Datum) or thereabout at its western boundary and -55.9m (minus fifty five point nine metres) OD (Ordnance Datum) or thereabouts at its eastern boundary.	101 - London Borough of Southwark	TGL228990
GRECT/2060	102.2 square metres of a stratum of subsoil below flats and garden (23 and 25, John McKenna Walk) where the upper surface of the stratum of the sub-soil is at a level equivalent to -38.1m (minus thirty eight point one metres) OD (Ordnance Datum) or thereabout at its western boundary and -38.1m (minus thirty eight point one metres) OD (Ordnance Datum) or thereabouts at its eastern boundary, and the lower surface of the stratum of the sub-soil is at a level equivalent to -56m (minus fifty six metres) OD (Ordnance Datum) or thereabout at its western boundary and -56m (minus fifty six metres) OD (Ordnance Datum) or thereabouts at its eastern boundary.	119 - London Borough of Southwark	TGL228990
GRECT/2061	84.4 square metres of a stratum of subsoil below house and garden (36, Collett Road) where the upper surface of the stratum of the sub-soil is at a level equivalent to -38.1m (minus thirty eight point one metres) OD (Ordnance Datum) or thereabout at its western boundary and -38.1m (minus thirty eight point one metres) OD (Ordnance Datum) or thereabouts at its eastern boundary, and the lower surface of the stratum of the sub-soil is at a level equivalent to -56m (minus fifty six metres) OD (Ordnance Datum) or thereabout at its western boundary and -55.9m (minus fifty five point nine metres) OD (Ordnance Datum) or thereabouts at its eastern boundary.	120 - London Borough of Southwark	TGL23611
GRECT/2062	37.6 square metres of a stratum of subsoil below house and garden (34, Collett Road) where the upper surface of the stratum of the sub-soil is at a level equivalent to -38.1m (minus thirty eight point one metres) OD (Ordnance Datum) or thereabout at its western boundary and -38.1m (minus thirty eight point one metres) OD (Ordnance Datum) or thereabouts at its eastern boundary, and the lower surface of the stratum of the sub-soil is at a level equivalent to -56m (minus fifty six metres) OD (Ordnance Datum) or thereabout at its western boundary and -55.9m (minus fifty five point nine metres) OD (Ordnance Datum) or thereabouts at its eastern boundary.	121 - London Borough of Southwark	TGL228990
GRECT/2063	4.1 square metres of a stratum of subsoil below garden (32, Collett Road) where the upper surface of the stratum of the sub-soil is at a level equivalent to -38.1m (minus thirty eight point one metres) OD (Ordnance Datum) or thereabout at its western boundary and -38.1m (minus thirty eight point one metres) OD (Ordnance Datum) or	122 - London Borough of Southwark	TGL228990

	thereabouts at its eastern boundary, and the lower surface of the stratum of the sub-soil is at a level equivalent to -55.9m (minus fifty five point nine metres) OD (Ordnance Datum) or thereabout at its western boundary and -55.9m (minus fifty five point nine metres) OD (Ordnance Datum) or thereabouts at its eastern boundary.		
GRECT/2064	248.2 square metres of a stratum of subsoil below public road and footways (Collett Road) where the upper surface of the stratum of the sub-soil is at a level equivalent to -38.1m (minus thirty eight point one metres) OD (Ordnance Datum) or thereabout at its western boundary and -38m (minus thirty eight metres) OD (Ordnance Datum) or thereabouts at its eastern boundary, and the lower surface of the stratum of the sub-soil is at a level equivalent to -56m (minus fifty six metres) OD (Ordnance Datum) or thereabout at its western boundary and -55.9m (minus fifty five point nine metres) OD (Ordnance Datum) or thereabouts at its eastern boundary.	124 - London Borough of Southwark	Unregistered
GRECT/2065	16.2 square metres of a stratum of subsoil below public road and footway (Storks Road) where the upper surface of the stratum of the sub-soil is at a level equivalent to -38m (minus thirty eight metres) OD (Ordnance Datum) or thereabout at its western boundary and -38m (minus thirty eight metres) OD (Ordnance Datum) or thereabouts at its eastern boundary, and the lower surface of the stratum of the sub-soil is at a level equivalent to -55.9m (minus fifty five point nine metres) OD (Ordnance Datum) or thereabout at its western boundary and -55.9m (minus fifty five point nine metres) OD (Ordnance Datum) or thereabouts at its eastern boundary.	125 - London Borough of Southwark	Unregistered
GRECT/2066	66.8 square metres of a stratum of subsoil below house and garden (47, Collett Road) where the upper surface of the stratum of the sub-soil is at a level equivalent to -38m (minus thirty eight metres) OD (Ordnance Datum) or thereabout at its western boundary and -38m (minus thirty eight metres) OD (Ordnance Datum) or thereabouts at its eastern boundary, and the lower surface of the stratum of the sub-soil is at a level equivalent to -55.9m (minus fifty five point nine metres) OD (Ordnance Datum) or thereabout at its western boundary and -55.9m (minus fifty five point nine metres) OD (Ordnance Datum) or thereabouts at its eastern boundary.	126 - London Borough of Southwark	TGL136566
GRECT/2067	95.2 square metres of a stratum of subsoil below house and garden (45, Collett Road) where the upper surface of the stratum of the sub-soil is at a level equivalent to -38m (minus thirty eight metres) OD (Ordnance Datum) or thereabout at its western boundary and -38m (minus thirty eight metres) OD (Ordnance Datum) or thereabouts at its eastern boundary, and the lower surface of the stratum of the sub-soil is at a level equivalent to -55.9m (minus fifty five point nine metres) OD (Ordnance Datum) or thereabout at its western boundary and -55.9m (minus fifty five point nine metres) OD (Ordnance Datum) or thereabouts at its eastern boundary.	127 - London Borough of Southwark	TGL133906
GRECT/2068	119.6 square metres of a stratum of subsoil below house and garden (43, Collett Road) where the upper surface of the stratum of the sub-soil is at a level equivalent to -38m (minus thirty eight metres) OD (Ordnance Datum) or thereabout at its western boundary and -38m (minus thirty eight metres) OD (Ordnance Datum) or thereabouts at its eastern boundary, and the lower surface of the stratum of the sub-soil is at a level equivalent to -55.9m (minus fifty five point nine metres) OD (Ordnance Datum) or thereabout at its western boundary and -55.9m (minus fifty five point nine metres) OD (Ordnance Datum) or thereabouts at its eastern boundary.	128 - London Borough of Southwark	TGL134403
GRECT/2069	109.5 square metres of a stratum of subsoil below house and garden (41, Collett Road) where the upper surface of the stratum of the sub-soil is at a level equivalent to -38m (minus thirty eight metres) OD (Ordnance Datum) or thereabout at its western boundary and -38m (minus thirty eight metres) OD (Ordnance Datum) or thereabouts at its eastern boundary, and the lower surface of the stratum of the sub-soil is at a level equivalent to -55.9m (minus fifty five point nine metres) OD (Ordnance Datum) or thereabout at its western boundary	129 - London Borough of Southwark	TGL134075

	and -55.9m (minus fifty five point nine metres) OD (Ordnance Datum) or thereabouts at its eastern boundary.		
GRECT/2070	77.2 square metres of a stratum of subsoil below house and garden (39, Collett Road) where the upper surface of the stratum of the sub-soil is at a level equivalent to -38m (minus thirty eight metres) OD (Ordnance Datum) or thereabout at its western boundary and -38m (minus thirty eight metres) OD (Ordnance Datum) or thereabouts at its eastern boundary, and the lower surface of the stratum of the sub-soil is at a level equivalent to -55.9m (minus fifty five point nine metres) OD (Ordnance Datum) or thereabout at its western boundary and -55.9m (minus fifty five point nine metres) OD (Ordnance Datum) or thereabouts at its eastern boundary.	130 - London Borough of Southwark	TGL133583
GRECT/2071	46.1 square metres of a stratum of subsoil below house and garden (37, Collett Road) where the upper surface of the stratum of the sub-soil is at a level equivalent to -38m (minus thirty eight metres) OD (Ordnance Datum) or thereabout at its western boundary and -38m (minus thirty eight metres) OD (Ordnance Datum) or thereabouts at its eastern boundary, and the lower surface of the stratum of the sub-soil is at a level equivalent to -55.9m (minus fifty five point nine metres) OD (Ordnance Datum) or thereabout at its western boundary and -55.8m (minus fifty five point eight metres) OD (Ordnance Datum) or thereabouts at its eastern boundary.	131 - London Borough of Southwark	TGL133972
GRECT/2072	16.4 square metres of a stratum of subsoil below garden (35, Collett Road) where the upper surface of the stratum of the sub-soil is at a level equivalent to -38m (minus thirty eight metres) OD (Ordnance Datum) or thereabout at its western boundary and -38m (minus thirty eight metres) OD (Ordnance Datum) or thereabouts at its eastern boundary, and the lower surface of the stratum of the sub-soil is at a level equivalent to -55.9m (minus fifty five point nine metres) OD (Ordnance Datum) or thereabout at its western boundary and -55.8m (minus fifty five point eight metres) OD (Ordnance Datum) or thereabouts at its eastern boundary.	132 - London Borough of Southwark	TGL133055
GRECT/2073	0.1 square metres of a stratum of subsoil below garden (33, Collett Road) where the upper surface of the stratum of the sub-soil is at a level equivalent to -38m (minus thirty eight metres) OD (Ordnance Datum) or thereabout at its western boundary and -38m (minus thirty eight metres) OD (Ordnance Datum) or thereabouts at its eastern boundary, and the lower surface of the stratum of the sub-soil is at a level equivalent to -55.8m (minus fifty five point eight metres) OD (Ordnance Datum) or thereabout at its western boundary and -55.8m (minus fifty five point eight metres) OD (Ordnance Datum) or thereabouts at its eastern boundary.	133 - London Borough of Southwark	TGL134216
GRECT/2074	64.2 square metres of a stratum of subsoil below house and garden (70, Storks Road) where the upper surface of the stratum of the sub-soil is at a level equivalent to -38m (minus thirty eight metres) OD (Ordnance Datum) or thereabout at its western boundary and -38m (minus thirty eight metres) OD (Ordnance Datum) or thereabouts at its eastern boundary, and the lower surface of the stratum of the sub-soil is at a level equivalent to -55.9m (minus fifty five point nine metres) OD (Ordnance Datum) or thereabout at its western boundary and -55.8m (minus fifty five point eight metres) OD (Ordnance Datum) or thereabouts at its eastern boundary.	135 - London Borough of Southwark	TGL135218
GRECT/2075	42.6 square metres of a stratum of subsoil below house and garden (72, Storks Road) where the upper surface of the stratum of the sub-soil is at a level equivalent to -38m (minus thirty eight metres) OD (Ordnance Datum) or thereabout at its western boundary and -38m (minus thirty eight metres) OD (Ordnance Datum) or thereabouts at its eastern boundary, and the lower surface of the stratum of the sub-soil is at a level equivalent to -55.9m (minus fifty five point nine metres) OD (Ordnance Datum) or thereabout at its western boundary and -55.8m (minus fifty five point eight metres) OD (Ordnance Datum) or thereabouts at its eastern boundary.	136 - London Borough of Southwark	TGL134962

GRECT/2327	202.1 square metres of a stratum of subsoil below public road and footways (Bevington Street) where the upper surface of the stratum of the sub-soil is at a level equivalent to -38.8m (minus thirty eight point eight metres) OD (Ordnance Datum) or thereabout at its western boundary and -38.7m (minus thirty eight point seven metres) OD (Ordnance Datum) or thereabouts at its eastern boundary, and the lower surface of the stratum of the sub-soil is at a level equivalent to -56.6m (minus fifty six point six metres) OD (Ordnance Datum) or thereabout at its western boundary and -56.6m (minus fifty six point six metres) OD (Ordnance Datum) or thereabouts at its eastern boundary.	62 - London Borough of Southwark	Unregistered
GRECT/2328	161 square metres of a stratum of subsoil below public road and footways (Bevington Street and Scott Lidgett Crescent) where the upper surface of the stratum of the sub-soil is at a level equivalent to -38.7m (minus thirty eight point seven metres) OD (Ordnance Datum) or thereabout at its western boundary and -38.6m (minus thirty eight point six metres) OD (Ordnance Datum) or thereabouts at its eastern boundary, and the lower surface of the stratum of the sub-soil is at a level equivalent to -56.5m (minus fifty six point five metres) OD (Ordnance Datum) or thereabout at its western boundary and -56.5m (minus fifty six point five metres) OD (Ordnance Datum) or thereabouts at its eastern boundary.	62 - London Borough of Southwark	Unregistered
GRECT/2329	249.8 square metres of a stratum of subsoil below public road, traffic island and footways (Bevington Street and Scott Lidgett Crescent) where the upper surface of the stratum of the sub-soil is at a level equivalent to -38.6m (minus thirty eight point six metres) OD (Ordnance Datum) or thereabout at its western boundary and -38.5m (minus thirty eight point five metres) OD (Ordnance Datum) or thereabouts at its eastern boundary, and the lower surface of the stratum of the sub-soil is at a level equivalent to -56.5m (minus fifty six point five metres) OD (Ordnance Datum) or thereabout at its western boundary and -56.4m (minus fifty six point four metres) OD (Ordnance Datum) or thereabouts at its eastern boundary.	62 - London Borough of Southwark	SGL214305
GRECT/2388	62.1 square metres of a stratum of subsoil below public road (Chambers Street) where the upper surface of the stratum of the sub-soil is at a level equivalent to -39m (minus thirty nine metres) OD (Ordnance Datum) or thereabout at its western boundary and -39m (minus thirty nine metres) OD (Ordnance Datum) or thereabouts at its eastern boundary, and the lower surface of the stratum of the sub-soil is at a level equivalent to -56.9m (minus fifty six point nine metres) OD (Ordnance Datum) or thereabout at its western boundary and -56.9m (minus fifty six point nine metres) OD (Ordnance Datum) or thereabouts at its eastern boundary.	51 - London Borough of Southwark	Unregistered
GRECT/2400	245.5 square metres of a stratum of subsoil below public road, traffic island and footways (Jamaica Road, A200) and hardstanding (Bromfield Court) where the upper surface of the stratum of the sub-soil is at a level equivalent to -38.5m (minus thirty eight point five metres) OD (Ordnance Datum) or thereabout at its western boundary and -38.5m (minus thirty eight point five metres) OD (Ordnance Datum) or thereabouts at its eastern boundary, and the lower surface of the stratum of the sub-soil is at a level equivalent to -56.4m (minus fifty six point four metres) OD (Ordnance Datum) or thereabout at its western boundary and -56.3m (minus fifty six point three metres) OD (Ordnance Datum) or thereabouts at its eastern boundary.	67 - London Borough of Southwark	Unregistered
GRECT/2401	10.8 square metres of a stratum of subsoil below footways and entrance to flats (The Jubilee Building, 98 Jamaica Road) where the upper surface of the stratum of the sub-soil is at a level equivalent to -38.5m (minus thirty eight point five metres) OD (Ordnance Datum) or thereabout at its western boundary and -38.5m (minus thirty eight point five metres) OD (Ordnance Datum) or thereabouts at its eastern boundary, and the lower surface of the stratum of the sub-soil is at a level equivalent to -56.3m (minus fifty six point three metres) OD (Ordnance Datum) or thereabout at its western boundary and -56.3m	67 - London Borough of Southwark	Unregistered

	(minus fifty six point three metres) OD (Ordnance Datum) or thereabouts at its eastern boundary.		
GRECT/2406	5 square metres of a stratum of subsoil below house and garden (47, Collett Road) where the upper surface of the stratum of the sub-soil is at a level equivalent to -38m (minus thirty eight metres) OD (Ordnance Datum) or thereabout at its western boundary and -38m (minus thirty eight metres) OD (Ordnance Datum) or thereabouts at its eastern boundary, and the lower surface of the stratum of the sub-soil is at a level equivalent to -55.9m (minus fifty five point nine metres) OD (Ordnance Datum) or thereabout at its western boundary and -55.9m (minus fifty five point nine metres) OD (Ordnance Datum) or thereabouts at its eastern boundary.	126 - London Borough of Southwark	Unregistered
GRECT/2407	0.7 square metres of a stratum of subsoil below house (25, Collett Road) where the upper surface of the stratum of the sub-soil is at a level equivalent to -38.1m (minus thirty eight point one metres) OD (Ordnance Datum) or thereabout at its western boundary and -38.1m (minus thirty eight point one metres) OD (Ordnance Datum) or thereabouts at its eastern boundary, and the lower surface of the stratum of the sub-soil is at a level equivalent to -56m (minus fifty six metres) OD (Ordnance Datum) or thereabout at its western boundary and -56m (minus fifty six metres) OD (Ordnance Datum) or thereabouts at its eastern boundary.	120 - London Borough of Southwark	TGL228990
GRECT/2474	171.1 square metres of a stratum of subsoil below hardstanding (Chambers Wharf) where the upper surface of the stratum of the sub-soil is at a level equivalent to -39.1m (minus thirty nine point one metres) OD (Ordnance Datum) or thereabout at its western boundary and -39m (minus thirty nine metres) OD (Ordnance Datum) or thereabouts at its eastern boundary, and the lower surface of the stratum of the sub-soil is at a level equivalent to -57m (minus fifty seven metres) OD (Ordnance Datum) or thereabout at its western boundary and -56.9m (minus fifty six point nine metres) OD (Ordnance Datum) or thereabouts at its eastern boundary.	20 - London Borough of Southwark	SGL246760

EXECUTION PAGE

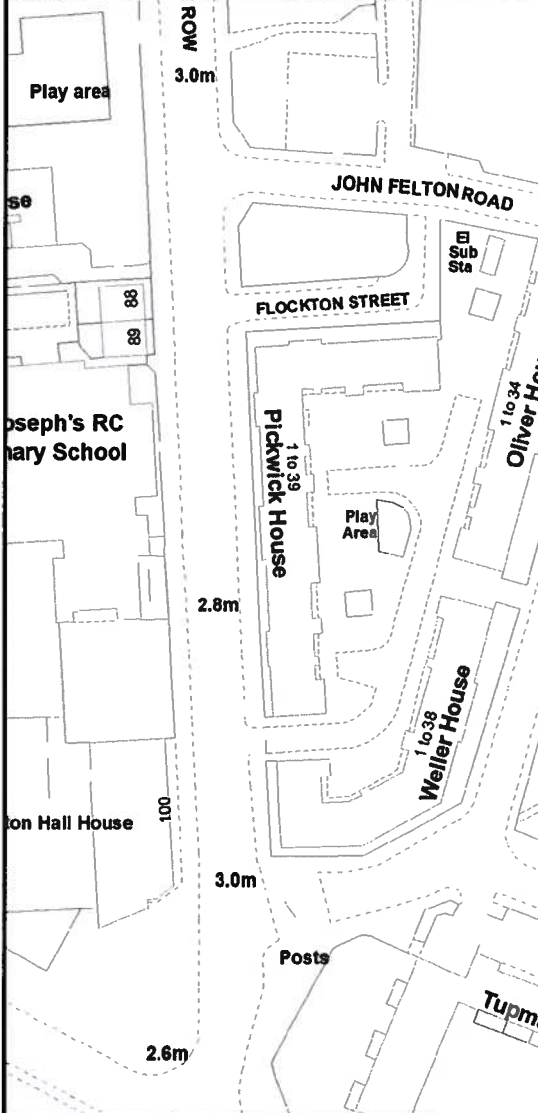
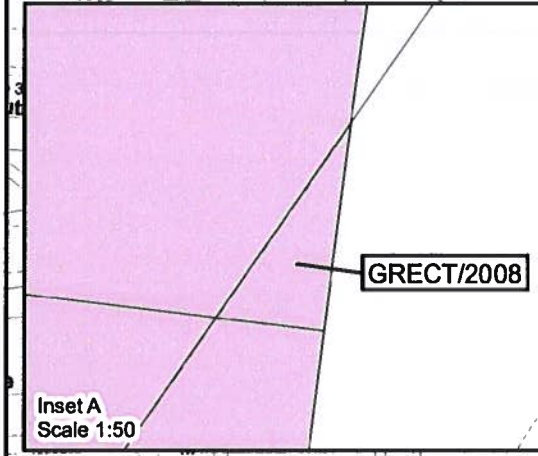
The Common seal of **Thames Water**)
Utilities Limited was affixed in the)
presence of:)



M. J. Mason
.....
Authorised Signatory

9th May 2024
.....
Date

This map is reproduced from Ordnance Survey material with permission of Ordnance Survey on behalf of the Controller of Her Majesty's Stationery Office © Crown Copyright. Unauthorized reproduction infringes Crown Copyright and may lead to prosecution or civil proceedings. 100022432 2024



The Common seal of Thames Water Utilities Limited was affixed in the presence of
Shirley Johnson
 Authorised Signatory
 Dated: 09th May 2024

Key
 Permanent Acquisition of Land

0 30 60 Metres	
Rev #	Revision Details
A	27/03/2024
Drawn	Check
JH	VC
Review	App'd
	VB

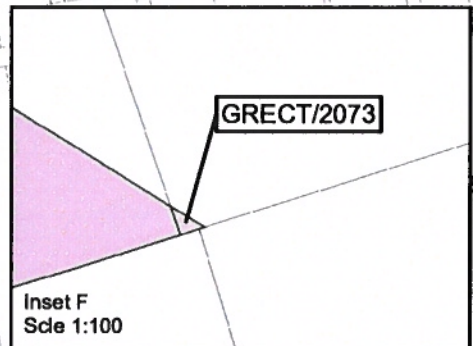
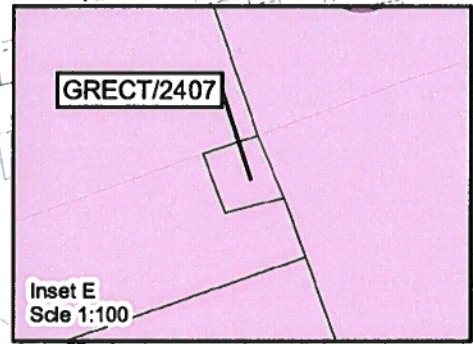
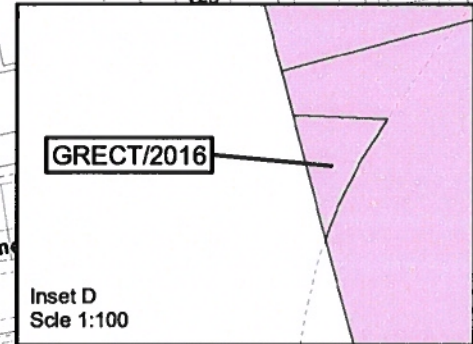
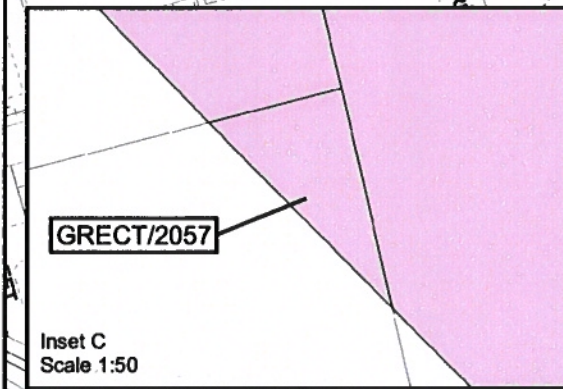
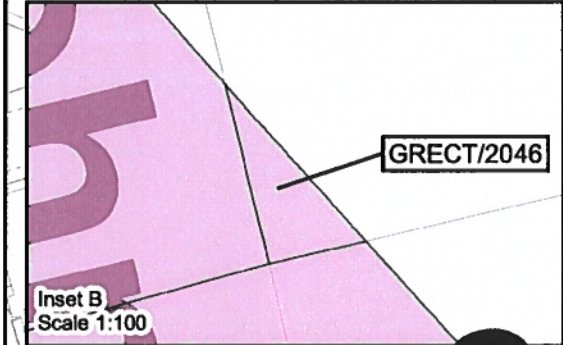
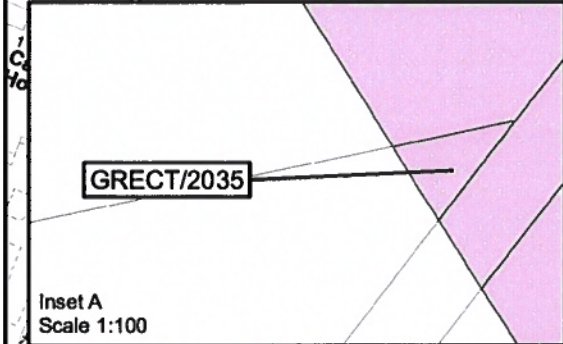
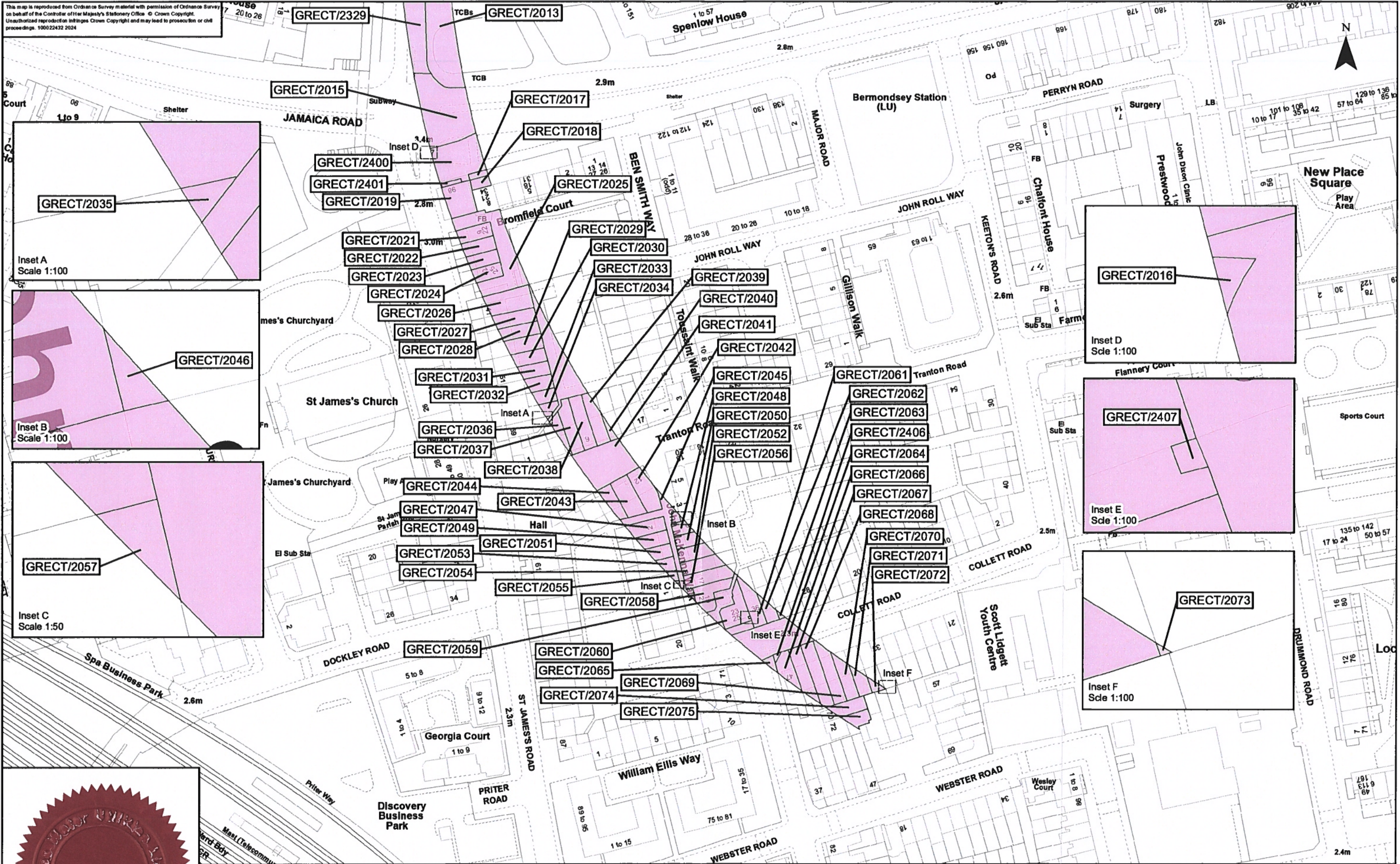
Tideway

Date: 27/03/2024

Scale at A3 1:250

The Thames Water Utilities Limited (Thames Tideway Tunnel) Order 2014 (AS AMENDED) SI 2014 NO 2384
 Drawing Title
 Plan referred to in General Vesting Declaration No. 34 of The Thames Water Utilities Limited (Thames Tideway Tunnel) Order 2014 (AS AMENDED) SI 2014 NO 2384
 For identification only
 Document Reference
 70054885-NTC-GVD-TR2-GVD34-0001

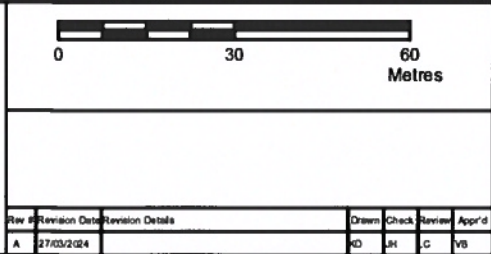
This map is reproduced from Ordnance Survey material with permission of Ordnance Survey on behalf of the Controller of Her Majesty's Stationery Office. © Crown Copyright. Unauthorized reproduction infringes Crown Copyright and may lead to prosecution or civil proceedings. 100022432 2024



The Common seal of Thames Water Utilities Limited was affixed in the presence of:

 Authorised Signatory
 Dated: 9th May 2024

Key
 Permanent Acquisition of Land



Job Title: The Thames Water Utilities Limited (Thames Tideway Tunnel) Order 2014 (AS AMENDED) SI 2014 NO 2384
 Drawing Title: Plan referred to in General Vesting Declaration No. 34 of The Thames Water Utilities Limited (Thames Tideway Tunnel) Order 2014 (AS AMENDED) SI 2014 NO 2384
 For identification only
 Document Reference: 70054885-NTC-GVD-TR2-GVD34-0002
 Date: 27/03/2024
 Scale at A3: 1:250