

THE THAMES WATER UTILITIES LIMITED (THAMES TIDEWAY TUNNEL) ORDER 2014 (AS AMENDED)¹ SI 2014 NO.2384

GENERAL VESTING DECLARATION No. 35

This GENERAL VESTING DECLARATION NO. 35 is made the *9th* day of *May* 2024 by Thames Water Utilities Limited ("Thames Water").

WHEREAS:

- 1 On 3 September 2014 an order entitled The Thames Water Utilities Limited (Thames Tideway Tunnel) Order 2014 (as amended) SI 2014 No.2384 ("the Order") was made (and came into force on 24 September 2014) by the Secretaries of State for Communities and Local Government and Environment, Food and Rural Affairs under the powers conferred on them by the Planning Act 2008 authorising Thames Water to acquire the land specified in the Schedule hereto.
- 2 Notice of the making/confirmation of the Order was first published in accordance with section 134 of the Planning Act 2008 on 19 September 2014.
- 3 Preliminary notice of the intention to make a general vesting declaration in respect of any of the land described in the Schedule hereto was first published on **24 November 2023** in accordance with section 3 of the Compulsory Purchase (Vesting Declarations) Act 1981 ("the 1981 Act")², as modified by Article 34 of the Order.
- 4 That preliminary notice included the particulars specified in section 3(3) of the 1981 Act, as modified by Article 34 of the Order.
- 5 The notice referred to in (4) above specified the period of two months beginning with the date of its first publication as the period before the end of which this general vesting declaration could not be executed.

NOW THIS DEED WITNESSETH that, in exercise of the powers conferred on them by the Order and section 4 of the 1981 Act, Thames Water hereby declare:

The land described in the Schedule hereto being part of the land authorised to be acquired by the Order and more particularly delineated on the plans annexed hereto, together with the right to enter upon and take possession of the land shall vest in the Thames Water as from the end of the period of 28 days from the date on which the service of notices required by section 6 of the 1981 Act and in accordance with Article 34 of the Order is completed.

¹ The Order has been amended by (1) SI 2015/723 issued on 17 March 2015; (2) SI 2017/659 issued on 16 May 2017; (3) SI 2018/1262 issued 29 November 2018; (4) Notices of Variation Nos.1 and 2 Issued on 17 March 2015 and 17 August 2017 respectively in respect of the Deemed Marine Licence; (5) SI 2020/268 issued on 10 March 2020; and (6) SI 2020/862 issued on 13 August 2020.

² The Version of the 1981 Act is the version that applied immediately prior to amendments brought in by the Housing and Planning Bill on 13 October 2015 and as modified by the Order.

SCHEDULE

The land

<u>Reference number on attached notice plan</u>	<u>Description of the land</u>	<u>Associated Book of Reference plot number</u>	<u>Title Number</u>
GRECT/2076	0.4 square metres of a stratum of subsoil below house and garden (61, Webster Road) where the upper surface of the stratum of the sub-soil is at a level equivalent to -37.9m (minus thirty seven point nine metres) OD (Ordnance Datum) or thereabout at its western boundary and -37.9m (minus thirty seven point nine metres) OD (Ordnance Datum) or thereabouts at its eastern boundary, and the lower surface of the stratum of the sub-soil is at a level equivalent to -55.8m (minus fifty five point eight metres) OD (Ordnance Datum) or thereabout at its western boundary and -55.8m (minus fifty five point eight metres) OD (Ordnance Datum) or thereabouts at its eastern boundary.	148 - London Borough of Southwark	TGL131710
GRECT/2077	58.2 square metres of a stratum of subsoil below house and garden (55, Webster Road) where the upper surface of the stratum of the sub-soil is at a level equivalent to -38m (minus thirty eight metres) OD (Ordnance Datum) or thereabout at its western boundary and -37.9m (minus thirty seven point nine metres) OD (Ordnance Datum) or thereabouts at its eastern boundary, and the lower surface of the stratum of the sub-soil is at a level equivalent to -55.8m (minus fifty five point eight metres) OD (Ordnance Datum) or thereabout at its western boundary and -55.8m (minus fifty five point eight metres) OD (Ordnance Datum) or thereabouts at its eastern boundary.	141 - London Borough of Southwark	TGL131470
GRECT/2078	72.5 square metres of a stratum of subsoil below house and garden (53, Webster Road) where the upper surface of the stratum of the sub-soil is at a level equivalent to -38m (minus thirty eight metres) OD (Ordnance Datum) or thereabout at its western boundary and -37.9m (minus thirty seven point nine metres) OD (Ordnance Datum) or thereabouts at its eastern boundary, and the lower surface of the stratum of the sub-soil is at a level equivalent to -55.8m (minus fifty five point eight metres) OD (Ordnance Datum) or thereabout at its western boundary and -55.8m (minus fifty five point eight metres) OD (Ordnance Datum) or thereabouts at its eastern boundary.	140 - London Borough of Southwark	TGL135022
GRECT/2079	80.9 square metres of a stratum of subsoil below house and garden (51, Webster Road) where the upper surface of the stratum of the sub-soil is at a level equivalent to -38m (minus thirty eight metres) OD (Ordnance Datum) or thereabout at its western boundary and -37.9m (minus thirty seven point nine metres) OD (Ordnance Datum) or thereabouts at its eastern boundary, and the lower surface of the stratum of the sub-soil is at a level equivalent to -55.8m (minus fifty five point eight metres) OD (Ordnance Datum) or thereabout at its western boundary and -55.8m (minus fifty five point eight metres) OD (Ordnance Datum) or thereabouts at its eastern boundary.	138 - London Borough of Southwark	TGL131707
GRECT/2080	95.3 square metres of a stratum of subsoil below house and garden (49, Webster Road) where the upper surface of the stratum of the sub-soil is at a level equivalent to -38m (minus thirty eight metres) OD (Ordnance Datum) or thereabout at its western boundary and -37.9m (minus thirty seven point nine metres) OD (Ordnance Datum) or thereabouts at its eastern boundary, and the lower surface of the stratum of the sub-soil is at a level equivalent to -55.8m (minus fifty five point eight metres) OD (Ordnance Datum) or thereabout at its western boundary and -55.8m (minus fifty five point eight metres) OD (Ordnance Datum) or thereabouts at its eastern boundary.	137 - London Borough of Southwark	TGL132311

GRECT/2081	7 square metres of a stratum of subsoil below garage (51, Webster Road) where the upper surface of the stratum of the sub-soil is at a level equivalent to -38m (minus thirty eight metres) OD (Ordnance Datum) or thereabout at its western boundary and -38m (minus thirty eight metres) OD (Ordnance Datum) or thereabouts at its eastern boundary, and the lower surface of the stratum of the sub-soil is at a level equivalent to -55.8m (minus fifty five point eight metres) OD (Ordnance Datum) or thereabout at its western boundary and -55.8m (minus fifty five point eight metres) OD (Ordnance Datum) or thereabouts at its eastern boundary.	146 - London Borough of Southwark	TGL131707
GRECT/2082	0.4 square metres of a stratum of subsoil below car park (Webster Road) where the upper surface of the stratum of the sub-soil is at a level equivalent to -38m (minus thirty eight metres) OD (Ordnance Datum) or thereabout at its western boundary and -38m (minus thirty eight metres) OD (Ordnance Datum) or thereabouts at its eastern boundary, and the lower surface of the stratum of the sub-soil is at a level equivalent to -55.8m (minus fifty five point eight metres) OD (Ordnance Datum) or thereabout at its western boundary and -55.8m (minus fifty five point eight metres) OD (Ordnance Datum) or thereabouts at its eastern boundary.	147 - London Borough of Southwark	TGL132311
GRECT/2083	3.9 square metres of a stratum of subsoil below house (63, Webster Road) where the upper surface of the stratum of the sub-soil is at a level equivalent to -37.9m (minus thirty seven point nine metres) OD (Ordnance Datum) or thereabout at its western boundary and -37.9m (minus thirty seven point nine metres) OD (Ordnance Datum) or thereabouts at its eastern boundary, and the lower surface of the stratum of the sub-soil is at a level equivalent to -55.8m (minus fifty five point eight metres) OD (Ordnance Datum) or thereabout at its western boundary and -55.8m (minus fifty five point eight metres) OD (Ordnance Datum) or thereabouts at its eastern boundary.	149 - London Borough of Southwark	TGL131722
GRECT/2084	25.2 square metres of a stratum of subsoil below house and garden (65, Webster Road) where the upper surface of the stratum of the sub-soil is at a level equivalent to -37.9m (minus thirty seven point nine metres) OD (Ordnance Datum) or thereabout at its western boundary and -37.9m (minus thirty seven point nine metres) OD (Ordnance Datum) or thereabouts at its eastern boundary, and the lower surface of the stratum of the sub-soil is at a level equivalent to -55.8m (minus fifty five point eight metres) OD (Ordnance Datum) or thereabout at its western boundary and -55.8m (minus fifty five point eight metres) OD (Ordnance Datum) or thereabouts at its eastern boundary.	150 - London Borough of Southwark	TGL131712
GRECT/2085	43.9 square metres of a stratum of subsoil below house and garden (67, Webster Road) where the upper surface of the stratum of the sub-soil is at a level equivalent to -37.9m (minus thirty seven point nine metres) OD (Ordnance Datum) or thereabout at its western boundary and -37.9m (minus thirty seven point nine metres) OD (Ordnance Datum) or thereabouts at its eastern boundary, and the lower surface of the stratum of the sub-soil is at a level equivalent to -55.8m (minus fifty five point eight metres) OD (Ordnance Datum) or thereabout at its western boundary and -55.8m (minus fifty five point eight metres) OD (Ordnance Datum) or thereabouts at its eastern boundary.	151 - London Borough of Southwark	TGL131714
GRECT/2086	108.2 square metres of a stratum of subsoil below house and garden (69, Webster Road) where the upper surface of the stratum of the sub-soil is at a level equivalent to -37.9m (minus thirty seven point nine metres) OD (Ordnance Datum) or thereabout at its western boundary and -37.9m (minus thirty seven point nine metres) OD (Ordnance Datum) or thereabouts at its eastern boundary, and the lower surface of the stratum of the sub-soil is at a level equivalent to -55.8m (minus fifty five point eight metres) OD (Ordnance Datum) or thereabout at its western boundary and -55.7m (minus fifty five point seven metres) OD (Ordnance Datum)	152 - London Borough of Southwark	TGL131725

	or thereabouts at its eastern boundary.		
GRECT/2087	7.5 square metres of a stratum of subsoil below building and footway (Southwark College) where the upper surface of the stratum of the sub-soil is at a level equivalent to -37.9m (minus thirty seven point nine metres) OD (Ordnance Datum) or thereabout at its western boundary and -37.9m (minus thirty seven point nine metres) OD (Ordnance Datum) or thereabouts at its eastern boundary, and the lower surface of the stratum of the sub-soil is at a level equivalent to -55.7m (minus fifty five point seven metres) OD (Ordnance Datum) or thereabout at its western boundary and -55.7m (minus fifty five point seven metres) OD (Ordnance Datum) or thereabouts at its eastern boundary.	153 - London Borough of Southwark	TGL592096
GRECT/2088	8.1 square metres of a stratum of subsoil below car park (Webster Road) where the upper surface of the stratum of the sub-soil is at a level equivalent to -37.9m (minus thirty seven point nine metres) OD (Ordnance Datum) or thereabout at its western boundary and -37.9m (minus thirty seven point nine metres) OD (Ordnance Datum) or thereabouts at its eastern boundary, and the lower surface of the stratum of the sub-soil is at a level equivalent to -55.8m (minus fifty five point eight metres) OD (Ordnance Datum) or thereabout at its western boundary and -55.8m (minus fifty five point eight metres) OD (Ordnance Datum) or thereabouts at its eastern boundary.	147 - London Borough of Southwark	TGL131722
GRECT/2089	343.9 square metres of a stratum of subsoil below public road and footways (Webster Road) where the upper surface of the stratum of the sub-soil is at a level equivalent to -37.9m (minus thirty seven point nine metres) OD (Ordnance Datum) or thereabout at its western boundary and -37.8m (minus thirty seven point eight metres) OD (Ordnance Datum) or thereabouts at its eastern boundary, and the lower surface of the stratum of the sub-soil is at a level equivalent to -55.8m (minus fifty five point eight metres) OD (Ordnance Datum) or thereabout at its western boundary and -55.7m (minus fifty five point seven metres) OD (Ordnance Datum) or thereabouts at its eastern boundary.	154 - London Borough of Southwark	Unregistered
GRECT/2090	1.2 square metres of a stratum of subsoil below house (30, Webster Road) where the upper surface of the stratum of the sub-soil is at a level equivalent to -37.9m (minus thirty seven point nine metres) OD (Ordnance Datum) or thereabout at its western boundary and -37.9m (minus thirty seven point nine metres) OD (Ordnance Datum) or thereabouts at its eastern boundary, and the lower surface of the stratum of the sub-soil is at a level equivalent to -55.7m (minus fifty five point seven metres) OD (Ordnance Datum) or thereabout at its western boundary and -55.7m (minus fifty five point seven metres) OD (Ordnance Datum) or thereabouts at its eastern boundary.	156 - London Borough of Southwark	TGL161277
GRECT/2091	17.2 square metres of a stratum of subsoil below house (32, Webster Road) where the upper surface of the stratum of the sub-soil is at a level equivalent to -37.9m (minus thirty seven point nine metres) OD (Ordnance Datum) or thereabout at its western boundary and -37.9m (minus thirty seven point nine metres) OD (Ordnance Datum) or thereabouts at its eastern boundary, and the lower surface of the stratum of the sub-soil is at a level equivalent to -55.7m (minus fifty five point seven metres) OD (Ordnance Datum) or thereabout at its western boundary and -55.7m (minus fifty five point seven metres) OD (Ordnance Datum) or thereabouts at its eastern boundary.	157 - London Borough of Southwark	TGL159952
GRECT/2092	36.7 square metres of a stratum of subsoil below house and garden (34, Webster Road) where the upper surface of the stratum of the sub-soil is at a level equivalent to -37.9m (minus thirty seven point nine metres) OD (Ordnance Datum) or thereabout at its western boundary and -37.8m (minus thirty seven point eight metres) OD (Ordnance Datum) or thereabouts at its eastern boundary, and the lower surface of the stratum of the sub-soil is at a level equivalent	158 - London Borough of Southwark	TGL159071

	to -55.7m (minus fifty five point seven metres) OD (Ordnance Datum) or thereabout at its western boundary and -55.7m (minus fifty five point seven metres) OD (Ordnance Datum) or thereabouts at its eastern boundary.		
GRECT/2093	14.1 square metres of a stratum of subsoil below access road (Wesley Court) where the upper surface of the stratum of the sub-soil is at a level equivalent to -37.9m (minus thirty seven point nine metres) OD (Ordnance Datum) or thereabout at its western boundary and -37.8m (minus thirty seven point eight metres) OD (Ordnance Datum) or thereabouts at its eastern boundary, and the lower surface of the stratum of the sub-soil is at a level equivalent to -55.7m (minus fifty five point seven metres) OD (Ordnance Datum) or thereabout at its western boundary and -55.7m (minus fifty five point seven metres) OD (Ordnance Datum) or thereabouts at its eastern boundary.	159 - London Borough of Southwark	TGL159071
GRECT/2094	215.9 square metres of a stratum of subsoil below flats (Wesley Court) where the upper surface of the stratum of the sub-soil is at a level equivalent to -37.9m (minus thirty seven point nine metres) OD (Ordnance Datum) or thereabout at its western boundary and -37.8m (minus thirty seven point eight metres) OD (Ordnance Datum) or thereabouts at its eastern boundary, and the lower surface of the stratum of the sub-soil is at a level equivalent to -55.7m (minus fifty five point seven metres) OD (Ordnance Datum) or thereabout at its western boundary and -55.7m (minus fifty five point seven metres) OD (Ordnance Datum) or thereabouts at its eastern boundary.	160 - London Borough of Southwark	LN121362, TGL195091, TGL195094, TGL195095, TGL198335, TGL195096, TGL195088
GRECT/2095	107.2 square metres of a stratum of subsoil below house and garden (86, Webster Road) where the upper surface of the stratum of the sub-soil is at a level equivalent to -37.8m (minus thirty seven point eight metres) OD (Ordnance Datum) or thereabout at its western boundary and -37.8m (minus thirty seven point eight metres) OD (Ordnance Datum) or thereabouts at its eastern boundary, and the lower surface of the stratum of the sub-soil is at a level equivalent to -55.7m (minus fifty five point seven metres) OD (Ordnance Datum) or thereabout at its western boundary and -55.7m (minus fifty five point seven metres) OD (Ordnance Datum) or thereabouts at its eastern boundary.	161 - London Borough of Southwark	SGL484759
GRECT/2096	60.3 square metres of a stratum of subsoil below house and garden (88, Webster Road) where the upper surface of the stratum of the sub-soil is at a level equivalent to -37.8m (minus thirty seven point eight metres) OD (Ordnance Datum) or thereabout at its western boundary and -37.8m (minus thirty seven point eight metres) OD (Ordnance Datum) or thereabouts at its eastern boundary, and the lower surface of the stratum of the sub-soil is at a level equivalent to -55.7m (minus fifty five point seven metres) OD (Ordnance Datum) or thereabout at its western boundary and -55.7m (minus fifty five point seven metres) OD (Ordnance Datum) or thereabouts at its eastern boundary.	162 - London Borough of Southwark	LN131897
GRECT/2097	17.7 square metres of a stratum of subsoil below house and garden (90, Webster Road) where the upper surface of the stratum of the sub-soil is at a level equivalent to -37.8m (minus thirty seven point eight metres) OD (Ordnance Datum) or thereabout at its western boundary and -37.8m (minus thirty seven point eight metres) OD (Ordnance Datum) or thereabouts at its eastern boundary, and the lower surface of the stratum of the sub-soil is at a level equivalent to -55.7m (minus fifty five point seven metres) OD (Ordnance Datum) or thereabout at its western boundary and -55.7m (minus fifty five point seven metres) OD (Ordnance Datum) or thereabouts at its eastern boundary.	163 - London Borough of Southwark	SGL401347
GRECT/2098	265.2 square metres of a stratum of subsoil below public road and footways (Webster Road) where the upper surface of the stratum of the sub-soil is at a level equivalent to -37.8m (minus thirty seven point eight metres) OD (Ordnance Datum) or thereabout at its	165 - London Borough of Southwark	Unregistered

	western boundary and -37.8m (minus thirty seven point eight metres) OD (Ordnance Datum) or thereabouts at its eastern boundary, and the lower surface of the stratum of the sub-soil is at a level equivalent to -55.7m (minus fifty five point seven metres) OD (Ordnance Datum) or thereabout at its western boundary and -55.6m (minus fifty five point six metres) OD (Ordnance Datum) or thereabouts at its eastern boundary.		
GRECT/2099	1136.7 square metres of a stratum of subsoil below school and hardstanding (Southwark College) where the upper surface of the stratum of the sub-soil is at a level equivalent to -37.8m (minus thirty seven point eight metres) OD (Ordnance Datum) or thereabout at its western boundary and -37.6m (minus thirty seven point six metres) OD (Ordnance Datum) or thereabouts at its eastern boundary, and the lower surface of the stratum of the sub-soil is at a level equivalent to -55.7m (minus fifty five point seven metres) OD (Ordnance Datum) or thereabout at its western boundary and -55.5m (minus fifty five point five metres) OD (Ordnance Datum) or thereabouts at its eastern boundary.	166 - London Borough of Southwark	TGL592095, TGL115495
GRECT/2100	126.3 square metres of a stratum of subsoil below public road and footways (Clement's Road) where the upper surface of the stratum of the sub-soil is at a level equivalent to -37.7m (minus thirty seven point seven metres) OD (Ordnance Datum) or thereabout at its western boundary and -37.6m (minus thirty seven point six metres) OD (Ordnance Datum) or thereabouts at its eastern boundary, and the lower surface of the stratum of the sub-soil is at a level equivalent to -55.5m (minus fifty five point five metres) OD (Ordnance Datum) or thereabout at its western boundary and -55.5m (minus fifty five point five metres) OD (Ordnance Datum) or thereabouts at its eastern boundary.	167 - London Borough of Southwark	Unregistered
GRECT/2101	263.3 square metres of a stratum of subsoil below public road and footways (Drummond Road) where the upper surface of the stratum of the sub-soil is at a level equivalent to -37.6m (minus thirty seven point six metres) OD (Ordnance Datum) or thereabout at its western boundary and -37.6m (minus thirty seven point six metres) OD (Ordnance Datum) or thereabouts at its eastern boundary, and the lower surface of the stratum of the sub-soil is at a level equivalent to -55.5m (minus fifty five point five metres) OD (Ordnance Datum) or thereabout at its western boundary and -55.5m (minus fifty five point five metres) OD (Ordnance Datum) or thereabouts at its eastern boundary.	169 - London Borough of Southwark	Unregistered
GRECT/2102	166.1 square metres of a stratum of subsoil below hardstanding (Lockwood Square) where the upper surface of the stratum of the sub-soil is at a level equivalent to -37.6m (minus thirty seven point six metres) OD (Ordnance Datum) or thereabout at its western boundary and -37.5m (minus thirty seven point five metres) OD (Ordnance Datum) or thereabouts at its eastern boundary, and the lower surface of the stratum of the sub-soil is at a level equivalent to -55.4m (minus fifty five point four metres) OD (Ordnance Datum) or thereabout at its western boundary and -55.3m (minus fifty five point three metres) OD (Ordnance Datum) or thereabouts at its eastern boundary.	170 - London Borough of Southwark	TGL45995
GRECT/2103	1091.8 square metres of a stratum of subsoil below public road and footways (Clement's Road) where the upper surface of the stratum of the sub-soil is at a level equivalent to -37.6m (minus thirty seven point six metres) OD (Ordnance Datum) or thereabout at its western boundary and -37.4m (minus thirty seven point four metres) OD (Ordnance Datum) or thereabouts at its eastern boundary, and the lower surface of the stratum of the sub-soil is at a level equivalent to -55.5m (minus fifty five point five metres) OD (Ordnance Datum) or thereabout at its western boundary and -55.3m (minus fifty five point three metres) OD (Ordnance Datum) or thereabouts at its eastern boundary.	173 - London Borough of Southwark	Unregistered

GRECT/2104	454.9 square metres of a stratum of subsoil below grassed area and hardstanding (Marden Square) where the upper surface of the stratum of the sub-soil is at a level equivalent to -37.6m (minus thirty seven point six metres) OD (Ordnance Datum) or thereabout at its western boundary and -37.4m (minus thirty seven point four metres) OD (Ordnance Datum) or thereabouts at its eastern boundary, and the lower surface of the stratum of the sub-soil is at a level equivalent to -55.4m (minus fifty five point four metres) OD (Ordnance Datum) or thereabout at its western boundary and -55.3m (minus fifty five point three metres) OD (Ordnance Datum) or thereabouts at its eastern boundary.	174 - London Borough of Southwark	TGL45995
GRECT/2105	338.1 square metres of a stratum of subsoil below public road and footways (Southwark Park Road, A2206) where the upper surface of the stratum of the sub-soil is at a level equivalent to -37.4m (minus thirty seven point four metres) OD (Ordnance Datum) or thereabout at its western boundary and -37.4m (minus thirty seven point four metres) OD (Ordnance Datum) or thereabouts at its eastern boundary, and the lower surface of the stratum of the sub-soil is at a level equivalent to -55.3m (minus fifty five point three metres) OD (Ordnance Datum) or thereabout at its western boundary and -55.2m (minus fifty five point two metres) OD (Ordnance Datum) or thereabouts at its eastern boundary.	175 - London Borough of Southwark	Unregistered
GRECT/2106	827.1 square metres of a stratum of subsoil below grassed area, footways and play area (Hickling House, Matson House and Glebe House) where the upper surface of the stratum of the sub-soil is at a level equivalent to -37.4m (minus thirty seven point four metres) OD (Ordnance Datum) or thereabout at its western boundary and -37.3m (minus thirty seven point three metres) OD (Ordnance Datum) or thereabouts at its eastern boundary, and the lower surface of the stratum of the sub-soil is at a level equivalent to -55.2m (minus fifty five point two metres) OD (Ordnance Datum) or thereabout at its western boundary and -55.1m (minus fifty five point one metres) OD (Ordnance Datum) or thereabouts at its eastern boundary.	176 - London Borough of Southwark	SGL400831
GRECT/2107	72.8 square metres of a stratum of subsoil below flats and gardens (Hickling House) where the upper surface of the stratum of the sub-soil is at a level equivalent to -37.3m (minus thirty seven point three metres) OD (Ordnance Datum) or thereabout at its western boundary and -37.3m (minus thirty seven point three metres) OD (Ordnance Datum) or thereabouts at its eastern boundary, and the lower surface of the stratum of the sub-soil is at a level equivalent to -55.2m (minus fifty five point two metres) OD (Ordnance Datum) or thereabout at its western boundary and -55.1m (minus fifty five point one metres) OD (Ordnance Datum) or thereabouts at its eastern boundary.	180 - London Borough of Southwark	SGL400831, TGL79865, TGL82568
GRECT/2108	335.2 square metres of a stratum of subsoil below flats and gardens (Matson House) where the upper surface of the stratum of the sub-soil is at a level equivalent to -37.3m (minus thirty seven point three metres) OD (Ordnance Datum) or thereabout at its western boundary and -37.2m (minus thirty seven point two metres) OD (Ordnance Datum) or thereabouts at its eastern boundary, and the lower surface of the stratum of the sub-soil is at a level equivalent to -55.1m (minus fifty five point one metres) OD (Ordnance Datum) or thereabout at its western boundary and -55.1m (minus fifty five point one metres) OD (Ordnance Datum) or thereabouts at its eastern boundary.	181 - London Borough of Southwark	SGL400831, TGL285077, TGL55031
GRECT/2109	54.2 square metres of a stratum of subsoil below grassed area (Matson House) where the upper surface of the stratum of the sub-soil is at a level equivalent to -37.2m (minus thirty seven point two metres) OD (Ordnance Datum) or thereabout at its western boundary and -37.2m (minus thirty seven point two metres) OD (Ordnance Datum) or thereabouts at its eastern boundary, and the lower surface of the stratum of the sub-soil is at a level equivalent	182 - London Borough of Southwark	SGL400831

	to -55.1m (minus fifty five point one metres) OD (Ordnance Datum) or thereabout at its western boundary and -55.1m (minus fifty five point one metres) OD (Ordnance Datum) or thereabouts at its eastern boundary.		
GRECT/2110	283.9 square metres of a stratum of subsoil below public road and footways (Slippers Place) and garages and car park where the upper surface of the stratum of the sub-soil is at a level equivalent to -37.2m (minus thirty seven point two metres) OD (Ordnance Datum) or thereabout at its western boundary and -37.2m (minus thirty seven point two metres) OD (Ordnance Datum) or thereabouts at its eastern boundary, and the lower surface of the stratum of the sub-soil is at a level equivalent to -55.1m (minus fifty five point one metres) OD (Ordnance Datum) or thereabout at its western boundary and -55m (minus fifty five metres) OD (Ordnance Datum) or thereabouts at its eastern boundary.	183 - London Borough of Southwark	SGL400831
GRECT/2111	2318.8 square metres of a stratum of subsoil below park, tennis courts, hardstanding, outbuilding, footway and garden (Southwark Park) where the upper surface of the stratum of the sub-soil is at a level equivalent to -37.2m (minus thirty seven point two metres) OD (Ordnance Datum) or thereabout at its western boundary and -36.9m (minus thirty six point nine metres) OD (Ordnance Datum) or thereabouts at its eastern boundary, and the lower surface of the stratum of the sub-soil is at a level equivalent to -55.1m (minus fifty five point one metres) OD (Ordnance Datum) or thereabout at its western boundary and -54.8m (minus fifty four point eight metres) OD (Ordnance Datum) or thereabouts at its eastern boundary.	184 - London Borough of Southwark	TGL281017
GRECT/2112	387.9 square metres of a stratum of subsoil below public road and footways (Park Approach) where the upper surface of the stratum of the sub-soil is at a level equivalent to -36.9m (minus thirty six point nine metres) OD (Ordnance Datum) or thereabout at its western boundary and -36.9m (minus thirty six point nine metres) OD (Ordnance Datum) or thereabouts at its eastern boundary, and the lower surface of the stratum of the sub-soil is at a level equivalent to -54.8m (minus fifty four point eight metres) OD (Ordnance Datum) or thereabout at its western boundary and -54.7m (minus fifty four point seven metres) OD (Ordnance Datum) or thereabouts at its eastern boundary.	185 - London Borough of Southwark	TGL281017
GRECT/2113	1774.4 square metres of a stratum of subsoil below park, garden and footways (Southwark Park) where the upper surface of the stratum of the sub-soil is at a level equivalent to -36.9m (minus thirty six point nine metres) OD (Ordnance Datum) or thereabout at its western boundary and -36.7m (minus thirty six point seven metres) OD (Ordnance Datum) or thereabouts at its eastern boundary, and the lower surface of the stratum of the sub-soil is at a level equivalent to -54.8m (minus fifty four point eight metres) OD (Ordnance Datum) or thereabout at its western boundary and -54.5m (minus fifty four point five metres) OD (Ordnance Datum) or thereabouts at its eastern boundary.	186 - London Borough of Southwark	TGL281017
GRECT/2114	954.9 square metres of a stratum of subsoil below gates (Gomm Gates), barrier, public roads and footways (Park Approach and Gomm Road) where the upper surface of the stratum of the sub-soil is at a level equivalent to -36.7m (minus thirty six point seven metres) OD (Ordnance Datum) or thereabout at its western boundary and -36.5m (minus thirty six point five metres) OD (Ordnance Datum) or thereabouts at its eastern boundary, and the lower surface of the stratum of the sub-soil is at a level equivalent to -54.6m (minus fifty four point six metres) OD (Ordnance Datum) or thereabout at its western boundary and -54.4m (minus fifty four point four metres) OD (Ordnance Datum) or thereabouts at its eastern boundary.	187 - London Borough of Southwark	TGL281017
GRECT/2115	141.4 square metres of a stratum of subsoil below grassed area, hardstanding and cafe (Southwark Park) where the upper surface of the stratum of the sub-soil is at a level equivalent to -36.7m (minus	189 - London Borough of Southwark	TGL281017

	thirty six point seven metres) OD (Ordnance Datum) or thereabout at its western boundary and -36.6m (minus thirty six point six metres) OD (Ordnance Datum) or thereabouts at its eastern boundary, and the lower surface of the stratum of the sub-soil is at a level equivalent to -54.5m (minus fifty four point five metres) OD (Ordnance Datum) or thereabout at its western boundary and -54.5m (minus fifty four point five metres) OD (Ordnance Datum) or thereabouts at its eastern boundary.		
GRECT/2116	1.7 square metres of a stratum of subsoil below park (Southwark Park) where the upper surface of the stratum of the sub-soil is at a level equivalent to -36.6m (minus thirty six point six metres) OD (Ordnance Datum) or thereabout at its western boundary and -36.6m (minus thirty six point six metres) OD (Ordnance Datum) or thereabouts at its eastern boundary, and the lower surface of the stratum of the sub-soil is at a level equivalent to -54.5m (minus fifty four point five metres) OD (Ordnance Datum) or thereabout at its western boundary and -54.5m (minus fifty four point five metres) OD (Ordnance Datum) or thereabouts at its eastern boundary.	190 - London Borough of Southwark	TGL281017
GRECT/2117	31.7 square metres of a stratum of subsoil below car park and footway (Gomm Road) where the upper surface of the stratum of the sub-soil is at a level equivalent to -36.5m (minus thirty six point five metres) OD (Ordnance Datum) or thereabout at its western boundary and -36.5m (minus thirty six point five metres) OD (Ordnance Datum) or thereabouts at its eastern boundary, and the lower surface of the stratum of the sub-soil is at a level equivalent to -54.4m (minus fifty four point four metres) OD (Ordnance Datum) or thereabout at its western boundary and -54.4m (minus fifty four point four metres) OD (Ordnance Datum) or thereabouts at its eastern boundary.	192 - London Borough of Southwark	TGL252232
GRECT/2118	227.8 square metres of a stratum of subsoil below park (Southwark Park) where the upper surface of the stratum of the sub-soil is at a level equivalent to -36.6m (minus thirty six point six metres) OD (Ordnance Datum) or thereabout at its western boundary and -36.5m (minus thirty six point five metres) OD (Ordnance Datum) or thereabouts at its eastern boundary, and the lower surface of the stratum of the sub-soil is at a level equivalent to -54.5m (minus fifty four point five metres) OD (Ordnance Datum) or thereabout at its western boundary and -54.4m (minus fifty four point four metres) OD (Ordnance Datum) or thereabouts at its eastern boundary.	191 - London Borough of Southwark	TGL281017
GRECT/2119	195 square metres of a stratum of subsoil below flats and garden (91, 93 and 95, Gomm Road) where the upper surface of the stratum of the sub-soil is at a level equivalent to -36.5m (minus thirty six point five metres) OD (Ordnance Datum) or thereabout at its western boundary and -36.5m (minus thirty six point five metres) OD (Ordnance Datum) or thereabouts at its eastern boundary, and the lower surface of the stratum of the sub-soil is at a level equivalent to -54.4m (minus fifty four point four metres) OD (Ordnance Datum) or thereabout at its western boundary and -54.4m (minus fifty four point four metres) OD (Ordnance Datum) or thereabouts at its eastern boundary.	193 - London Borough of Southwark	TGL252232, TGL206376
GRECT/2120	114.2 square metres of a stratum of subsoil below house and garden (89, Gomm Road) where the upper surface of the stratum of the sub-soil is at a level equivalent to -36.5m (minus thirty six point five metres) OD (Ordnance Datum) or thereabout at its western boundary and -36.5m (minus thirty six point five metres) OD (Ordnance Datum) or thereabouts at its eastern boundary, and the lower surface of the stratum of the sub-soil is at a level equivalent to -54.4m (minus fifty four point four metres) OD (Ordnance Datum) or thereabout at its western boundary and -54.4m (minus fifty four point four metres) OD (Ordnance Datum) or thereabouts at its eastern boundary.	195 - London Borough of Southwark	TGL9152

GRECT/2121	84.7 square metres of a stratum of subsoil below house and garden (87, Gomm Road) where the upper surface of the stratum of the sub-soil is at a level equivalent to -36.5m (minus thirty six point five metres) OD (Ordnance Datum) or thereabout at its western boundary and -36.5m (minus thirty six point five metres) OD (Ordnance Datum) or thereabouts at its eastern boundary, and the lower surface of the stratum of the sub-soil is at a level equivalent to -54.4m (minus fifty four point four metres) OD (Ordnance Datum) or thereabout at its western boundary and -54.4m (minus fifty four point four metres) OD (Ordnance Datum) or thereabouts at its eastern boundary.	196 - London Borough of Southwark	TGL252232
GRECT/2122	61.6 square metres of a stratum of subsoil below house and garden (85, Gomm Road) where the upper surface of the stratum of the sub-soil is at a level equivalent to -36.5m (minus thirty six point five metres) OD (Ordnance Datum) or thereabout at its western boundary and -36.5m (minus thirty six point five metres) OD (Ordnance Datum) or thereabouts at its eastern boundary, and the lower surface of the stratum of the sub-soil is at a level equivalent to -54.4m (minus fifty four point four metres) OD (Ordnance Datum) or thereabout at its western boundary and -54.3m (minus fifty four point three metres) OD (Ordnance Datum) or thereabouts at its eastern boundary.	197 - London Borough of Southwark	TGL2984
GRECT/2123	35.5 square metres of a stratum of subsoil below house and garden (83, Gomm Road) where the upper surface of the stratum of the sub-soil is at a level equivalent to -36.5m (minus thirty six point five metres) OD (Ordnance Datum) or thereabout at its western boundary and -36.5m (minus thirty six point five metres) OD (Ordnance Datum) or thereabouts at its eastern boundary, and the lower surface of the stratum of the sub-soil is at a level equivalent to -54.4m (minus fifty four point four metres) OD (Ordnance Datum) or thereabout at its western boundary and -54.3m (minus fifty four point three metres) OD (Ordnance Datum) or thereabouts at its eastern boundary.	198 - London Borough of Southwark	TGL252232
GRECT/2124	40.1 square metres of a stratum of subsoil below house and garden (81, Gomm Road) where the upper surface of the stratum of the sub-soil is at a level equivalent to -36.5m (minus thirty six point five metres) OD (Ordnance Datum) or thereabout at its western boundary and -36.4m (minus thirty six point four metres) OD (Ordnance Datum) or thereabouts at its eastern boundary, and the lower surface of the stratum of the sub-soil is at a level equivalent to -54.3m (minus fifty four point three metres) OD (Ordnance Datum) or thereabout at its western boundary and -54.3m (minus fifty four point three metres) OD (Ordnance Datum) or thereabouts at its eastern boundary.	199 - London Borough of Southwark	TGL252232
GRECT/2125	27.4 square metres of a stratum of subsoil below garden (79, Gomm Road) where the upper surface of the stratum of the sub-soil is at a level equivalent to -36.5m (minus thirty six point five metres) OD (Ordnance Datum) or thereabout at its western boundary and -36.4m (minus thirty six point four metres) OD (Ordnance Datum) or thereabouts at its eastern boundary, and the lower surface of the stratum of the sub-soil is at a level equivalent to -54.3m (minus fifty four point three metres) OD (Ordnance Datum) or thereabout at its western boundary and -54.3m (minus fifty four point three metres) OD (Ordnance Datum) or thereabouts at its eastern boundary.	200 - London Borough of Southwark	TGL189906
GRECT/2126	2.5 square metres of a stratum of subsoil below garden (77, Gomm Road) where the upper surface of the stratum of the sub-soil is at a level equivalent to -36.4m (minus thirty six point four metres) OD (Ordnance Datum) or thereabout at its western boundary and -36.4m (minus thirty six point four metres) OD (Ordnance Datum) or thereabouts at its eastern boundary, and the lower surface of the stratum of the sub-soil is at a level equivalent to -54.3m (minus fifty four point three metres) OD (Ordnance Datum) or thereabout at its western boundary and -54.3m (minus fifty four point three metres) OD (Ordnance Datum) or thereabouts at its eastern boundary.	201 - London Borough of Southwark	TGL221769

	OD (Ordnance Datum) or thereabouts at its eastern boundary.		
GRECT/2127	536.7 square metres of a stratum of subsoil below car park, hardstanding and footways (Gomm Road) where the upper surface of the stratum of the sub-soil is at a level equivalent to -36.5m (minus thirty six point five metres) OD (Ordnance Datum) or thereabout at its western boundary and -36.4m (minus thirty six point four metres) OD (Ordnance Datum) or thereabouts at its eastern boundary, and the lower surface of the stratum of the sub-soil is at a level equivalent to -54.4m (minus fifty four point four metres) OD (Ordnance Datum) or thereabout at its western boundary and -54.2m (minus fifty four point two metres) OD (Ordnance Datum) or thereabouts at its eastern boundary.	194 - London Borough of Southwark	TGL252232
GRECT/2128	20.5 square metres of a stratum of subsoil below flats and garden (71, 73 and 75, Gomm Road) where the upper surface of the stratum of the sub-soil is at a level equivalent to -36.5m (minus thirty six point five metres) OD (Ordnance Datum) or thereabout at its western boundary and -36.5m (minus thirty six point five metres) OD (Ordnance Datum) or thereabouts at its eastern boundary, and the lower surface of the stratum of the sub-soil is at a level equivalent to -54.4m (minus fifty four point four metres) OD (Ordnance Datum) or thereabout at its western boundary and -54.3m (minus fifty four point three metres) OD (Ordnance Datum) or thereabouts at its eastern boundary.	202 - London Borough of Southwark	TGL40572, TGL252232
GRECT/2129	5.3 square metres of a stratum of subsoil below houses and gardens (67 and 69, Gomm Road) where the upper surface of the stratum of the sub-soil is at a level equivalent to -36.5m (minus thirty six point five metres) OD (Ordnance Datum) or thereabout at its western boundary and -36.5m (minus thirty six point five metres) OD (Ordnance Datum) or thereabouts at its eastern boundary, and the lower surface of the stratum of the sub-soil is at a level equivalent to -54.3m (minus fifty four point three metres) OD (Ordnance Datum) or thereabout at its western boundary and -54.3m (minus fifty four point three metres) OD (Ordnance Datum) or thereabouts at its eastern boundary.	203 - London Borough of Southwark	TGL252232
GRECT/2130	5.5 square metres of a stratum of subsoil below flats (51, 53 and 55, Gomm Road) where the upper surface of the stratum of the sub-soil is at a level equivalent to -36.4m (minus thirty six point four metres) OD (Ordnance Datum) or thereabout at its western boundary and -36.4m (minus thirty six point four metres) OD (Ordnance Datum) or thereabouts at its eastern boundary, and the lower surface of the stratum of the sub-soil is at a level equivalent to -54.3m (minus fifty four point three metres) OD (Ordnance Datum) or thereabout at its western boundary and -54.3m (minus fifty four point three metres) OD (Ordnance Datum) or thereabouts at its eastern boundary.	205 - London Borough of Southwark	TGL252232, TGL183875
GRECT/2131	59 square metres of a stratum of subsoil below house and garden (49, Gomm Road) where the upper surface of the stratum of the sub-soil is at a level equivalent to -36.4m (minus thirty six point four metres) OD (Ordnance Datum) or thereabout at its western boundary and -36.4m (minus thirty six point four metres) OD (Ordnance Datum) or thereabouts at its eastern boundary, and the lower surface of the stratum of the sub-soil is at a level equivalent to -54.3m (minus fifty four point three metres) OD (Ordnance Datum) or thereabout at its western boundary and -54.3m (minus fifty four point three metres) OD (Ordnance Datum) or thereabouts at its eastern boundary.	206 - London Borough of Southwark	TGL27124
GRECT/2132	81.4 square metres of a stratum of subsoil below house and garden (47, Gomm Road) where the upper surface of the stratum of the sub-soil is at a level equivalent to -36.4m (minus thirty six point four metres) OD (Ordnance Datum) or thereabout at its western boundary and -36.4m (minus thirty six point four metres) OD (Ordnance Datum) or thereabouts at its eastern boundary, and the lower surface of the stratum of the sub-soil is at a level equivalent	207 - London Borough of Southwark	TGL252232

	to -54.3m (minus fifty four point three metres) OD (Ordnance Datum) or thereabout at its western boundary and -54.2m (minus fifty four point two metres) OD (Ordnance Datum) or thereabouts at its eastern boundary.		
GRECT/2133	113.1 square metres of a stratum of subsoil below house and garden (45, Gomm Road) where the upper surface of the stratum of the sub-soil is at a level equivalent to -36.4m (minus thirty six point four metres) OD (Ordnance Datum) or thereabout at its western boundary and -36.4m (minus thirty six point four metres) OD (Ordnance Datum) or thereabouts at its eastern boundary, and the lower surface of the stratum of the sub-soil is at a level equivalent to -54.2m (minus fifty four point two metres) OD (Ordnance Datum) or thereabout at its western boundary and -54.2m (minus fifty four point two metres) OD (Ordnance Datum) or thereabouts at its eastern boundary.	208 - London Borough of Southwark	TGL252232
GRECT/2134	118.8 square metres of a stratum of subsoil below house and garden (43, Gomm Road) where the upper surface of the stratum of the sub-soil is at a level equivalent to -36.4m (minus thirty six point four metres) OD (Ordnance Datum) or thereabout at its western boundary and -36.4m (minus thirty six point four metres) OD (Ordnance Datum) or thereabouts at its eastern boundary, and the lower surface of the stratum of the sub-soil is at a level equivalent to -54.2m (minus fifty four point two metres) OD (Ordnance Datum) or thereabout at its western boundary and -54.2m (minus fifty four point two metres) OD (Ordnance Datum) or thereabouts at its eastern boundary.	209 - London Borough of Southwark	TGL167945
GRECT/2135	93.5 square metres of a stratum of subsoil below house and garden (41, Gomm Road) where the upper surface of the stratum of the sub-soil is at a level equivalent to -36.4m (minus thirty six point four metres) OD (Ordnance Datum) or thereabout at its western boundary and -36.3m (minus thirty six point three metres) OD (Ordnance Datum) or thereabouts at its eastern boundary, and the lower surface of the stratum of the sub-soil is at a level equivalent to -54.2m (minus fifty four point two metres) OD (Ordnance Datum) or thereabout at its western boundary and -54.2m (minus fifty four point two metres) OD (Ordnance Datum) or thereabouts at its eastern boundary.	210 - London Borough of Southwark	TGL252232
GRECT/2136	113.6 square metres of a stratum of subsoil below house and garden (39, Gomm Road) where the upper surface of the stratum of the sub-soil is at a level equivalent to -36.4m (minus thirty six point four metres) OD (Ordnance Datum) or thereabout at its western boundary and -36.3m (minus thirty six point three metres) OD (Ordnance Datum) or thereabouts at its eastern boundary, and the lower surface of the stratum of the sub-soil is at a level equivalent to -54.2m (minus fifty four point two metres) OD (Ordnance Datum) or thereabout at its western boundary and -54.2m (minus fifty four point two metres) OD (Ordnance Datum) or thereabouts at its eastern boundary.	211 - London Borough of Southwark	TGL1211
GRECT/2137	54.8 square metres of a stratum of subsoil below garden (37, Gomm Road) where the upper surface of the stratum of the sub-soil is at a level equivalent to -36.3m (minus thirty six point three metres) OD (Ordnance Datum) or thereabout at its western boundary and -36.3m (minus thirty six point three metres) OD (Ordnance Datum) or thereabouts at its eastern boundary, and the lower surface of the stratum of the sub-soil is at a level equivalent to -54.2m (minus fifty four point two metres) OD (Ordnance Datum) or thereabout at its western boundary and -54.2m (minus fifty four point two metres) OD (Ordnance Datum) or thereabouts at its eastern boundary.	213 - London Borough of Southwark	TGL252232
GRECT/2138	10.8 square metres of a stratum of subsoil below public footway (Gomm Road) where the upper surface of the stratum of the sub-soil is at a level equivalent to -36.4m (minus thirty six point four metres) OD (Ordnance Datum) or thereabout at its western	215 - London Borough of Southwark	TGL252232

	boundary and -36.3m (minus thirty six point three metres) OD (Ordnance Datum) or thereabouts at its eastern boundary, and the lower surface of the stratum of the sub-soil is at a level equivalent to -54.2m (minus fifty four point two metres) OD (Ordnance Datum) or thereabout at its western boundary and -54.2m (minus fifty four point two metres) OD (Ordnance Datum) or thereabouts at its eastern boundary.		
GRECT/2139	3480 square metres of a stratum of subsoil below park and footway (Southwark Park) where the upper surface of the stratum of the sub-soil is at a level equivalent to -36.4m (minus thirty six point four metres) OD (Ordnance Datum) or thereabout at its western boundary and -35.9m (minus thirty five point nine metres) OD (Ordnance Datum) or thereabouts at its eastern boundary, and the lower surface of the stratum of the sub-soil is at a level equivalent to -54.2m (minus fifty four point two metres) OD (Ordnance Datum) or thereabout at its western boundary and -53.8m (minus fifty three point eight metres) OD (Ordnance Datum) or thereabouts at its eastern boundary.	216 - London Borough of Southwark	TGL281017
GRECT/2140	6.9 square metres of a stratum of subsoil below church and grassed area (Swedish Seamen's Church) where the upper surface of the stratum of the sub-soil is at a level equivalent to -36.2m (minus thirty six point two metres) OD (Ordnance Datum) or thereabout at its western boundary and -36.2m (minus thirty six point two metres) OD (Ordnance Datum) or thereabouts at its eastern boundary, and the lower surface of the stratum of the sub-soil is at a level equivalent to -54.1m (minus fifty four point one metres) OD (Ordnance Datum) or thereabout at its western boundary and -54m (minus fifty four metres) OD (Ordnance Datum) or thereabouts at its eastern boundary.	217 - London Borough of Southwark	SGL336118
GRECT/2330	17.1 square metres of a stratum of subsoil below parking space (55, Webster Road) where the upper surface of the stratum of the sub-soil is at a level equivalent to -37.9m (minus thirty seven point nine metres) OD (Ordnance Datum) or thereabout at its western boundary and -37.9m (minus thirty seven point nine metres) OD (Ordnance Datum) or thereabouts at its eastern boundary, and the lower surface of the stratum of the sub-soil is at a level equivalent to -55.8m (minus fifty five point eight metres) OD (Ordnance Datum) or thereabout at its western boundary and -55.8m (minus fifty five point eight metres) OD (Ordnance Datum) or thereabouts at its eastern boundary.	147 - London Borough of Southwark	TGL131470
GRECT/2331	17.3 square metres of a stratum of subsoil below parking space (57, Webster Road) where the upper surface of the stratum of the sub-soil is at a level equivalent to -38m (minus thirty eight metres) OD (Ordnance Datum) or thereabout at its western boundary and -37.9m (minus thirty seven point nine metres) OD (Ordnance Datum) or thereabouts at its eastern boundary, and the lower surface of the stratum of the sub-soil is at a level equivalent to -55.8m (minus fifty five point eight metres) OD (Ordnance Datum) or thereabout at its western boundary and -55.8m (minus fifty five point eight metres) OD (Ordnance Datum) or thereabouts at its eastern boundary.	147 - London Borough of Southwark	TGL131641
GRECT/2332	38.8 square metres of a stratum of subsoil below parking space (53, Webster Road) where the upper surface of the stratum of the sub-soil is at a level equivalent to -37.9m (minus thirty seven point nine metres) OD (Ordnance Datum) or thereabout at its western boundary and -37.9m (minus thirty seven point nine metres) OD (Ordnance Datum) or thereabouts at its eastern boundary, and the lower surface of the stratum of the sub-soil is at a level equivalent to -55.8m (minus fifty five point eight metres) OD (Ordnance Datum) or thereabout at its western boundary and -55.8m (minus fifty five point eight metres) OD (Ordnance Datum) or thereabouts at its eastern boundary.	147 - London Borough of Southwark	TGL135022

GRECT/2333	17 square metres of a stratum of subsoil below parking space (51, Webster Road) where the upper surface of the stratum of the sub-soil is at a level equivalent to -37.9m (minus thirty seven point nine metres) OD (Ordnance Datum) or thereabout at its western boundary and -37.9m (minus thirty seven point nine metres) OD (Ordnance Datum) or thereabouts at its eastern boundary, and the lower surface of the stratum of the sub-soil is at a level equivalent to -55.8m (minus fifty five point eight metres) OD (Ordnance Datum) or thereabout at its western boundary and -55.8m (minus fifty five point eight metres) OD (Ordnance Datum) or thereabouts at its eastern boundary.	147 - London Borough of Southwark	TGL131707
GRECT/2334	3.4 square metres of a stratum of subsoil below parking space (49, Webster Road) where the upper surface of the stratum of the sub-soil is at a level equivalent to -37.9m (minus thirty seven point nine metres) OD (Ordnance Datum) or thereabout at its western boundary and -37.9m (minus thirty seven point nine metres) OD (Ordnance Datum) or thereabouts at its eastern boundary, and the lower surface of the stratum of the sub-soil is at a level equivalent to -55.8m (minus fifty five point eight metres) OD (Ordnance Datum) or thereabout at its western boundary and -55.8m (minus fifty five point eight metres) OD (Ordnance Datum) or thereabouts at its eastern boundary.	147 - London Borough of Southwark	TGL132311
GRECT/2335	5 square metres of a stratum of subsoil below house (65, Webster Road) where the upper surface of the stratum of the sub-soil is at a level equivalent to -37.9m (minus thirty seven point nine metres) OD (Ordnance Datum) or thereabout at its western boundary and -37.9m (minus thirty seven point nine metres) OD (Ordnance Datum) or thereabouts at its eastern boundary, and the lower surface of the stratum of the sub-soil is at a level equivalent to -55.8m (minus fifty five point eight metres) OD (Ordnance Datum) or thereabout at its western boundary and -55.8m (minus fifty five point eight metres) OD (Ordnance Datum) or thereabouts at its eastern boundary.	147 - London Borough of Southwark	TGL131712
GRECT/2336	5 square metres of a stratum of subsoil below house (67, Webster Road) where the upper surface of the stratum of the sub-soil is at a level equivalent to -37.9m (minus thirty seven point nine metres) OD (Ordnance Datum) or thereabout at its western boundary and -37.9m (minus thirty seven point nine metres) OD (Ordnance Datum) or thereabouts at its eastern boundary, and the lower surface of the stratum of the sub-soil is at a level equivalent to -55.8m (minus fifty five point eight metres) OD (Ordnance Datum) or thereabout at its western boundary and -55.8m (minus fifty five point eight metres) OD (Ordnance Datum) or thereabouts at its eastern boundary.	147 - London Borough of Southwark	TGL131714
GRECT/2337	61.9 square metres of a stratum of subsoil below parking space (69, Webster Road) where the upper surface of the stratum of the sub-soil is at a level equivalent to -37.9m (minus thirty seven point nine metres) OD (Ordnance Datum) or thereabout at its western boundary and -37.9m (minus thirty seven point nine metres) OD (Ordnance Datum) or thereabouts at its eastern boundary, and the lower surface of the stratum of the sub-soil is at a level equivalent to -55.8m (minus fifty five point eight metres) OD (Ordnance Datum) or thereabout at its western boundary and -55.8m (minus fifty five point eight metres) OD (Ordnance Datum) or thereabouts at its eastern boundary.	147 - London Borough of Southwark	TGL131725
GRECT/2338	21.7 square metres of a stratum of subsoil below parking space (61, Webster Road) where the upper surface of the stratum of the sub-soil is at a level equivalent to -37.9m (minus thirty seven point nine metres) OD (Ordnance Datum) or thereabout at its western boundary and -37.9m (minus thirty seven point nine metres) OD (Ordnance Datum) or thereabouts at its eastern boundary, and the lower surface of the stratum of the sub-soil is at a level equivalent to -55.8m (minus fifty five point eight metres) OD (Ordnance Datum) or thereabouts at its western boundary and -55.8m (minus fifty five point eight metres) OD (Ordnance Datum) or thereabouts at its eastern boundary.	147 - London Borough of Southwark	TGL131710

	Datum) or thereabout at its western boundary and -55.8m (minus fifty five point eight metres) OD (Ordnance Datum) or thereabouts at its eastern boundary.		
GRECT/2339	25.2 square metres of a stratum of subsoil below parking space (63, Webster Road) where the upper surface of the stratum of the sub-soil is at a level equivalent to -37.9m (minus thirty seven point nine metres) OD (Ordnance Datum) or thereabout at its western boundary and -37.9m (minus thirty seven point nine metres) OD (Ordnance Datum) or thereabouts at its eastern boundary, and the lower surface of the stratum of the sub-soil is at a level equivalent to -55.8m (minus fifty five point eight metres) OD (Ordnance Datum) or thereabout at its western boundary and -55.8m (minus fifty five point eight metres) OD (Ordnance Datum) or thereabouts at its eastern boundary.	147 - London Borough of Southwark	TGL131722
GRECT/2340	23.5 square metres of a stratum of subsoil below parking space (65, Webster Road) where the upper surface of the stratum of the sub-soil is at a level equivalent to -38m (minus thirty eight metres) OD (Ordnance Datum) or thereabout at its western boundary and -37.9m (minus thirty seven point nine metres) OD (Ordnance Datum) or thereabouts at its eastern boundary, and the lower surface of the stratum of the sub-soil is at a level equivalent to -55.8m (minus fifty five point eight metres) OD (Ordnance Datum) or thereabout at its western boundary and -55.8m (minus fifty five point eight metres) OD (Ordnance Datum) or thereabouts at its eastern boundary.	147 - London Borough of Southwark	TGL131712
GRECT/2341	2.8 square metres of a stratum of subsoil below parking space (67, Webster Road) where the upper surface of the stratum of the sub-soil is at a level equivalent to -37.9m (minus thirty seven point nine metres) OD (Ordnance Datum) or thereabout at its western boundary and -38m (minus thirty eight metres) OD (Ordnance Datum) or thereabouts at its eastern boundary, and the lower surface of the stratum of the sub-soil is at a level equivalent to -55.8m (minus fifty five point eight metres) OD (Ordnance Datum) or thereabout at its western boundary and -55.8m (minus fifty five point eight metres) OD (Ordnance Datum) or thereabouts at its eastern boundary.	147 - London Borough of Southwark	TGL131714
GRECT/2408	1.6 square metres of a stratum of subsoil below part of public footways adjoining Lockwood Square (Drummond Road) where the upper surface of the stratum of the sub-soil is at a level equivalent to -37.6m (minus thirty seven point six metres) OD (Ordnance Datum) or thereabout at its western boundary and -37.6m (minus thirty seven point six metres) OD (Ordnance Datum) or thereabouts at its eastern boundary, and the lower surface of the stratum of the sub-soil is at a level equivalent to -55.4m (minus fifty five point four metres) OD (Ordnance Datum) or thereabout at its western boundary and -55.4m (minus fifty five point four metres) OD (Ordnance Datum) or thereabouts at its eastern boundary.	169 - London Borough of Southwark	TGL45995
GRECT/2415	0.3 square metres of a stratum of subsoil below access road (Wesley Court) where the upper surface of the stratum of the sub-soil is at a level equivalent to -37.9m (minus thirty seven point nine metres) OD (Ordnance Datum) or thereabout at its western boundary and -37.8m (minus thirty seven point eight metres) OD (Ordnance Datum) or thereabouts at its eastern boundary, and the lower surface of the stratum of the sub-soil is at a level equivalent to -55.7m (minus fifty five point seven metres) OD (Ordnance Datum) or thereabout at its western boundary and -55.7m (minus fifty five point seven metres) OD (Ordnance Datum) or thereabouts at its eastern boundary.	159 - London Borough of Southwark	Unregistered
GRECT/2416	2.1 square metres of a stratum of subsoil below access road (Wesley Court) where the upper surface of the stratum of the sub-soil is at a level equivalent to -37.9m (minus thirty seven point nine metres) OD (Ordnance Datum) or thereabout at its western boundary and -37.8m (minus thirty seven point eight metres) OD	159 - London Borough of Southwark	TGL157622

	(Ordnance Datum) or thereabouts at its eastern boundary, and the lower surface of the stratum of the sub-soil is at a level equivalent to -55.7m (minus fifty five point seven metres) OD (Ordnance Datum) or thereabout at its western boundary and -55.7m (minus fifty five point seven metres) OD (Ordnance Datum) or thereabouts at its eastern boundary.		
GRECT/2417	12.1 square metres of a stratum of subsoil below access road (Wesley Court) where the upper surface of the stratum of the sub-soil is at a level equivalent to -37.9m (minus thirty seven point nine metres) OD (Ordnance Datum) or thereabout at its western boundary and -37.8m (minus thirty seven point eight metres) OD (Ordnance Datum) or thereabouts at its eastern boundary, and the lower surface of the stratum of the sub-soil is at a level equivalent to -55.7m (minus fifty five point seven metres) OD (Ordnance Datum) or thereabout at its western boundary and -55.7m (minus fifty five point seven metres) OD (Ordnance Datum) or thereabouts at its eastern boundary.	159 - London Borough of Southwark	TGL159952
GRECT/2418	11.2 square metres of a stratum of subsoil below access road (Wesley Court) where the upper surface of the stratum of the sub-soil is at a level equivalent to -37.9m (minus thirty seven point nine metres) OD (Ordnance Datum) or thereabout at its western boundary and -37.8m (minus thirty seven point eight metres) OD (Ordnance Datum) or thereabouts at its eastern boundary, and the lower surface of the stratum of the sub-soil is at a level equivalent to -55.7m (minus fifty five point seven metres) OD (Ordnance Datum) or thereabout at its western boundary and -55.7m (minus fifty five point seven metres) OD (Ordnance Datum) or thereabouts at its eastern boundary.	159 - London Borough of Southwark	TGL161277
GRECT/2419	5.7 square metres of a stratum of subsoil below access road (Wesley Court) where the upper surface of the stratum of the sub-soil is at a level equivalent to -37.9m (minus thirty seven point nine metres) OD (Ordnance Datum) or thereabout at its western boundary and -37.8m (minus thirty seven point eight metres) OD (Ordnance Datum) or thereabouts at its eastern boundary, and the lower surface of the stratum of the sub-soil is at a level equivalent to -55.7m (minus fifty five point seven metres) OD (Ordnance Datum) or thereabout at its western boundary and -55.7m (minus fifty five point seven metres) OD (Ordnance Datum) or thereabouts at its eastern boundary.	159 - London Borough of Southwark	TGL160521
GRECT/2420	0.1 square metres of a stratum of subsoil below access road (Wesley Court) where the upper surface of the stratum of the sub-soil is at a level equivalent to -37.9m (minus thirty seven point nine metres) OD (Ordnance Datum) or thereabout at its western boundary and -37.8m (minus thirty seven point eight metres) OD (Ordnance Datum) or thereabouts at its eastern boundary, and the lower surface of the stratum of the sub-soil is at a level equivalent to -55.7m (minus fifty five point seven metres) OD (Ordnance Datum) or thereabout at its western boundary and -55.7m (minus fifty five point seven metres) OD (Ordnance Datum) or thereabouts at its eastern boundary.	159 - London Borough of Southwark	TGL159645
GRECT/2421	9.7 square metres of a stratum of subsoil below public footways (Webster Road) where the upper surface of the stratum of the sub-soil is at a level equivalent to -37.8m (minus thirty seven point eight metres) OD (Ordnance Datum) or thereabout at its western boundary and -37.8m (minus thirty seven point eight metres) OD (Ordnance Datum) or thereabouts at its eastern boundary, and the lower surface of the stratum of the sub-soil is at a level equivalent to -55.7m (minus fifty five point seven metres) OD (Ordnance Datum) or thereabout at its western boundary and -55.6m (minus fifty five point six metres) OD (Ordnance Datum) or thereabouts at its eastern boundary.	165 - London Borough of Southwark	LN131897

GRECT/2422	10.3 square metres of a stratum of subsoil below public footways (Webster Road) where the upper surface of the stratum of the sub-soil is at a level equivalent to -37.8m (minus thirty seven point eight metres) OD (Ordnance Datum) or thereabout at its western boundary and -37.8m (minus thirty seven point eight metres) OD (Ordnance Datum) or thereabouts at its eastern boundary, and the lower surface of the stratum of the sub-soil is at a level equivalent to -55.7m (minus fifty five point seven metres) OD (Ordnance Datum) or thereabout at its western boundary and -55.6m (minus fifty five point six metres) OD (Ordnance Datum) or thereabouts at its eastern boundary.	165 - London Borough of Southwark	SGL401347
GRECT/2423	0.1 square metres of a stratum of subsoil below public footways (Webster Road) where the upper surface of the stratum of the sub-soil is at a level equivalent to -37.8m (minus thirty seven point eight metres) OD (Ordnance Datum) or thereabout at its western boundary and -37.8m (minus thirty seven point eight metres) OD (Ordnance Datum) or thereabouts at its eastern boundary, and the lower surface of the stratum of the sub-soil is at a level equivalent to -55.7m (minus fifty five point seven metres) OD (Ordnance Datum) or thereabout at its western boundary and -55.6m (minus fifty five point six metres) OD (Ordnance Datum) or thereabouts at its eastern boundary.	165 - London Borough of Southwark	LN140348

EXECUTION PAGE

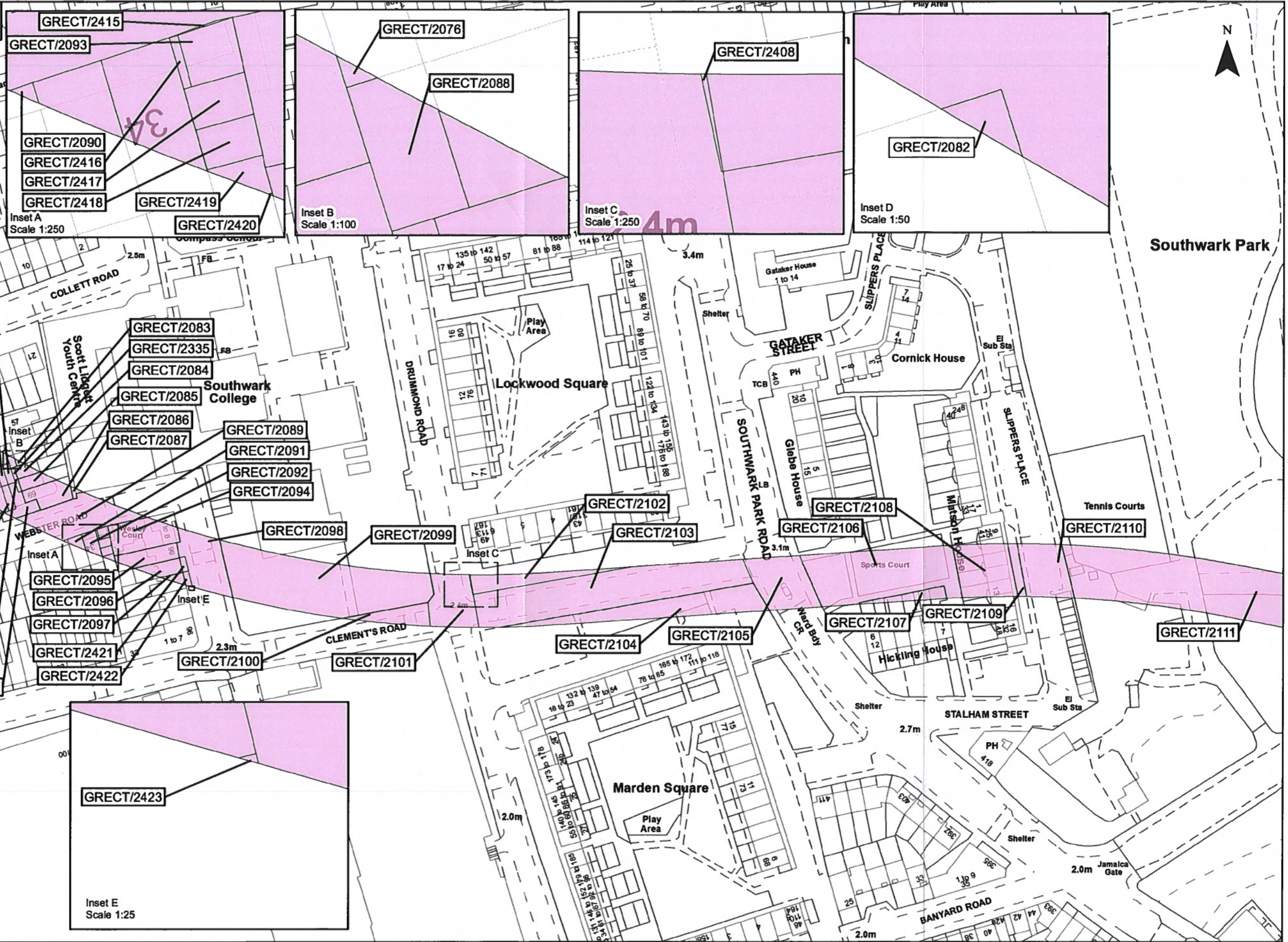
The Common seal of **Thames Water**)
Utilities Limited was affixed in the)
presence of:)



J. Sandison J. SANDISON
.....
Authorised Signatory

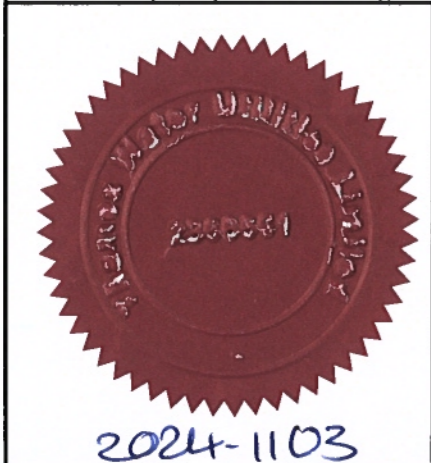
9th May 2024
.....
Date

This map is reproduced from Ordnance Survey material with permission of Ordnance Survey on behalf of the Controller of Her Majesty's Stationery Office. © Crown Copyright. Unauthorised reproduction infringes Crown Copyright and may lead to prosecution or civil proceedings. 100022432 2024



N

Southwark Park

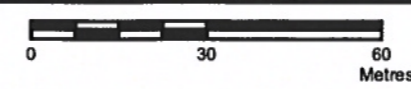


The Common seal of Thames Water Utilities Limited was affixed in the presence of:

J. SANDERSON
 Authorised Signatory

Dated: 9th May 2024

Key
 Permanent Acquisition of Land



Tideway

Date: 07/03/2024

Scale at A3
 1:1,250

The Thames Water Utilities Limited (Thames Tideway Tunnel) Order 2014 (AS AMENDED) SI 2014 NO 2384

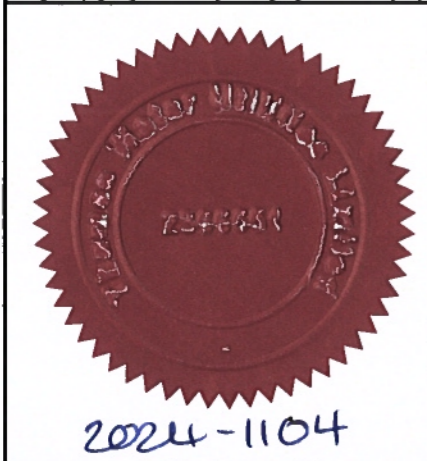
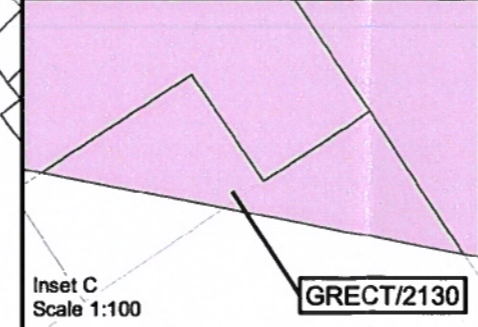
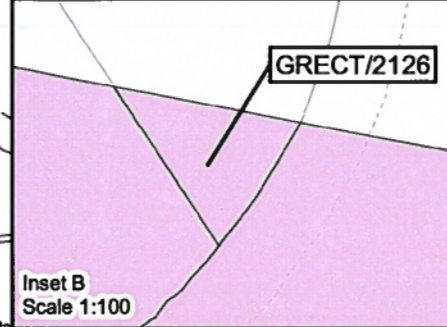
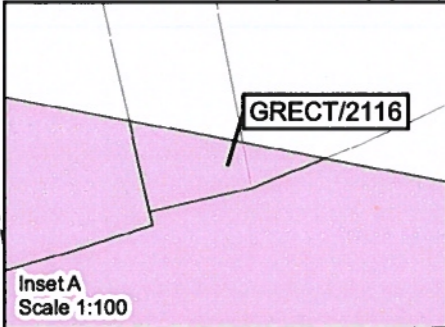
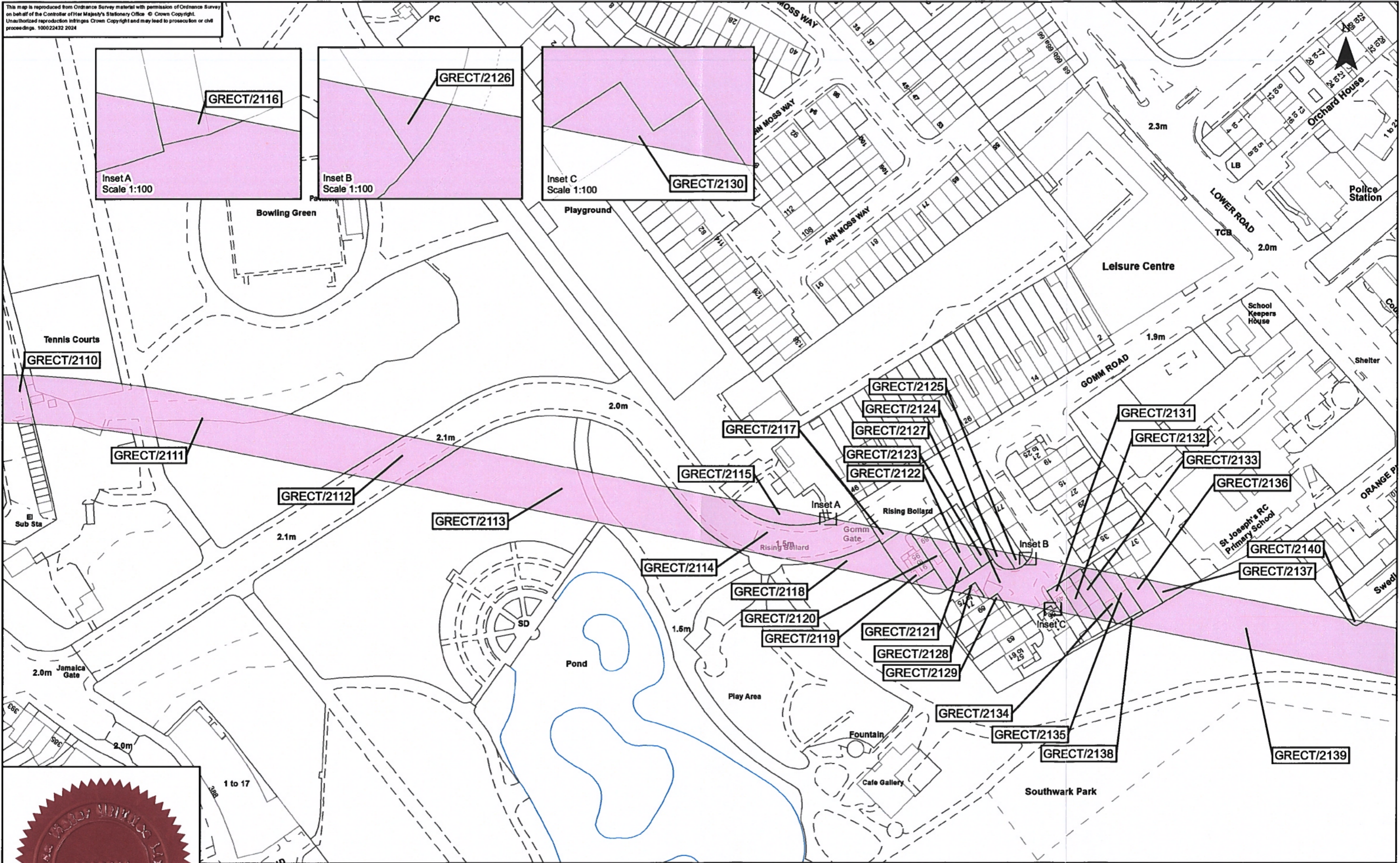
Plan referred to in General Vesting Declaration No. 35 of The Thames Water Utilities Limited (Thames Tideway Tunnel) Order 2014 (AS AMENDED) SI 2014 NO 2384

For identification only

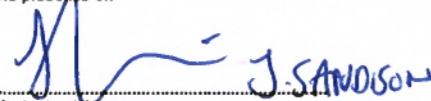
Document Reference
 70054885-NTC-GVD-TR1-GVD35-0001

Rev	Revision Date	Revision Details	Drawn	Check	Review	App'd
A	07/03/2024		AB	JM	LC	VB

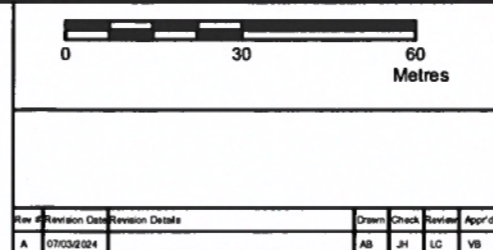
This map is reproduced from Ordnance Survey material with permission of Ordnance Survey on behalf of the Controller of Her Majesty's Stationery Office © Crown Copyright. Unauthorized reproduction infringes Crown Copyright and may lead to prosecution or civil proceedings. 100022432 2024



2024-1104

The Common seal of Thames Water Utilities Limited was affixed in the presence of:

 Authorised Signatory
 Dated: 9th May 2024

Key
 Permanent Acquisition of Land




Tideway

Date: 29/02/2024

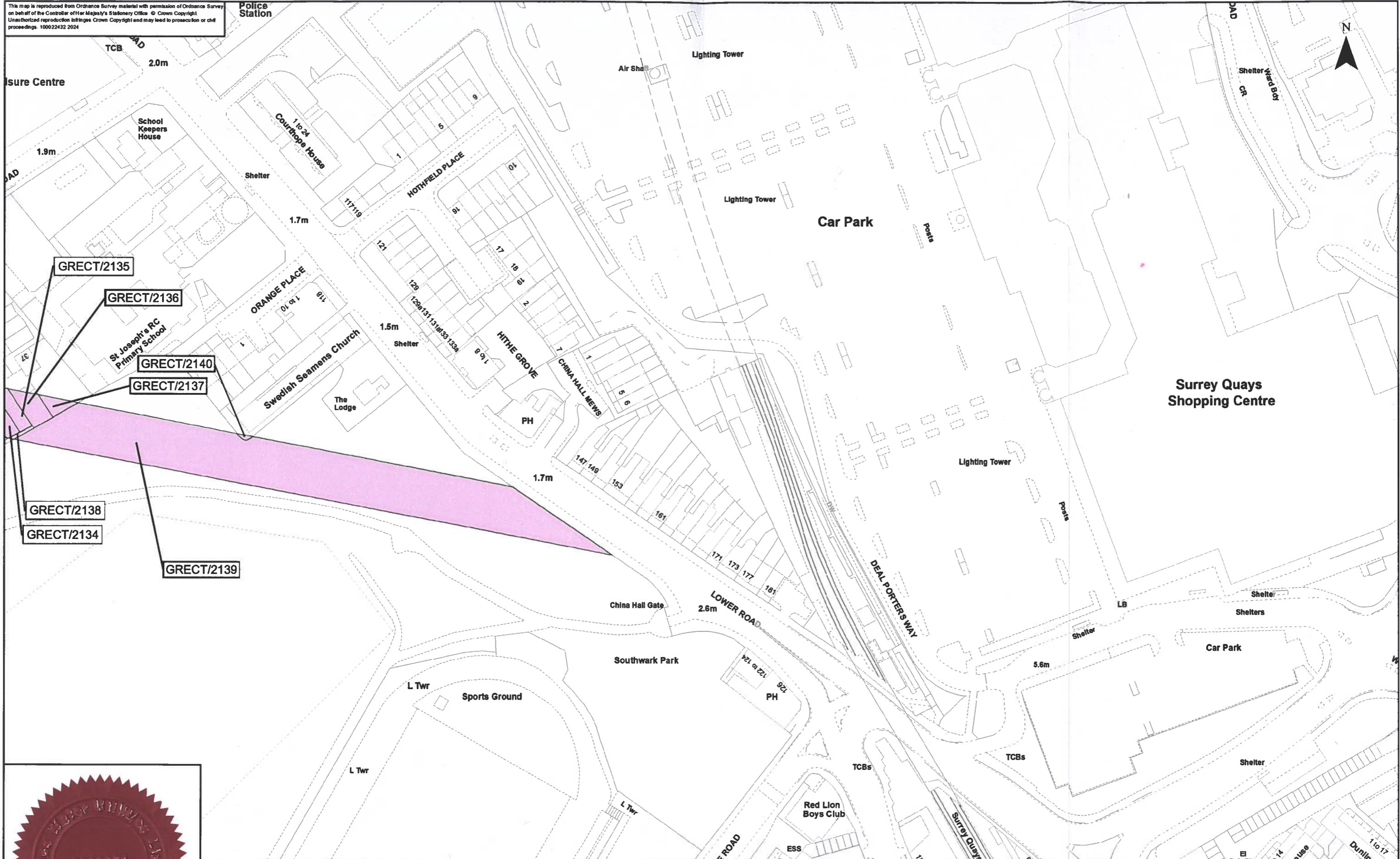
Scale at A3
1:1,250

The Thames Water Utilities Limited (Thames Tideway Tunnel) Order 2014 (AS AMENDED) SI 2014 NO 2384
 Drawing Title
 Plan referred to in General Vesting Declaration No. 35 of The Thames Water Utilities Limited (Thames Tideway Tunnel) Order 2014 (AS AMENDED) SI 2014 NO 2384
 For identification only
 Document Reference
 70054885-NTC-GVD-TR1-GVD35-0002

Rev	Revision Date	Revision Details	Drawn	Check	Review	App'd
A	07/03/2024		AB	JH	LC	VB

This map is reproduced from Ordnance Survey material with permission of Ordnance Survey on behalf of the Controller of Her Majesty's Stationery Office © Crown Copyright. Unauthorized reproduction infringes Crown Copyright and may lead to prosecution or civil proceedings. 100022432 2024

Police Station

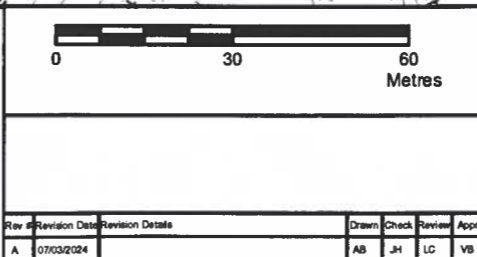


The Common seal of Thames Water Utilities Limited was affixed in the presence of:

J. Sanderson
 Authorised Signatory

Dated: *9th May 2024*

Key
 Permanent Acquisition of Land




Tideway

Date: 29/02/2024

Scale at A3
1:1,250

The Thames Water Utilities Limited (Thames Tideway Tunnel) Order 2014 (AS AMENDED) SI 2014 NO 2384

Drawing Title
 Plan referred to in General Vesting Declaration No. 35 of The Thames Water Utilities Limited (Thames Tideway Tunnel) Order 2014 (AS AMENDED) SI 2014 NO 2384

Scale
 For identification only

Document Reference
 70054885-NTC-GVD-TR1-GVD35-0003