

WEEKLY SITE UPDATE



Tideway

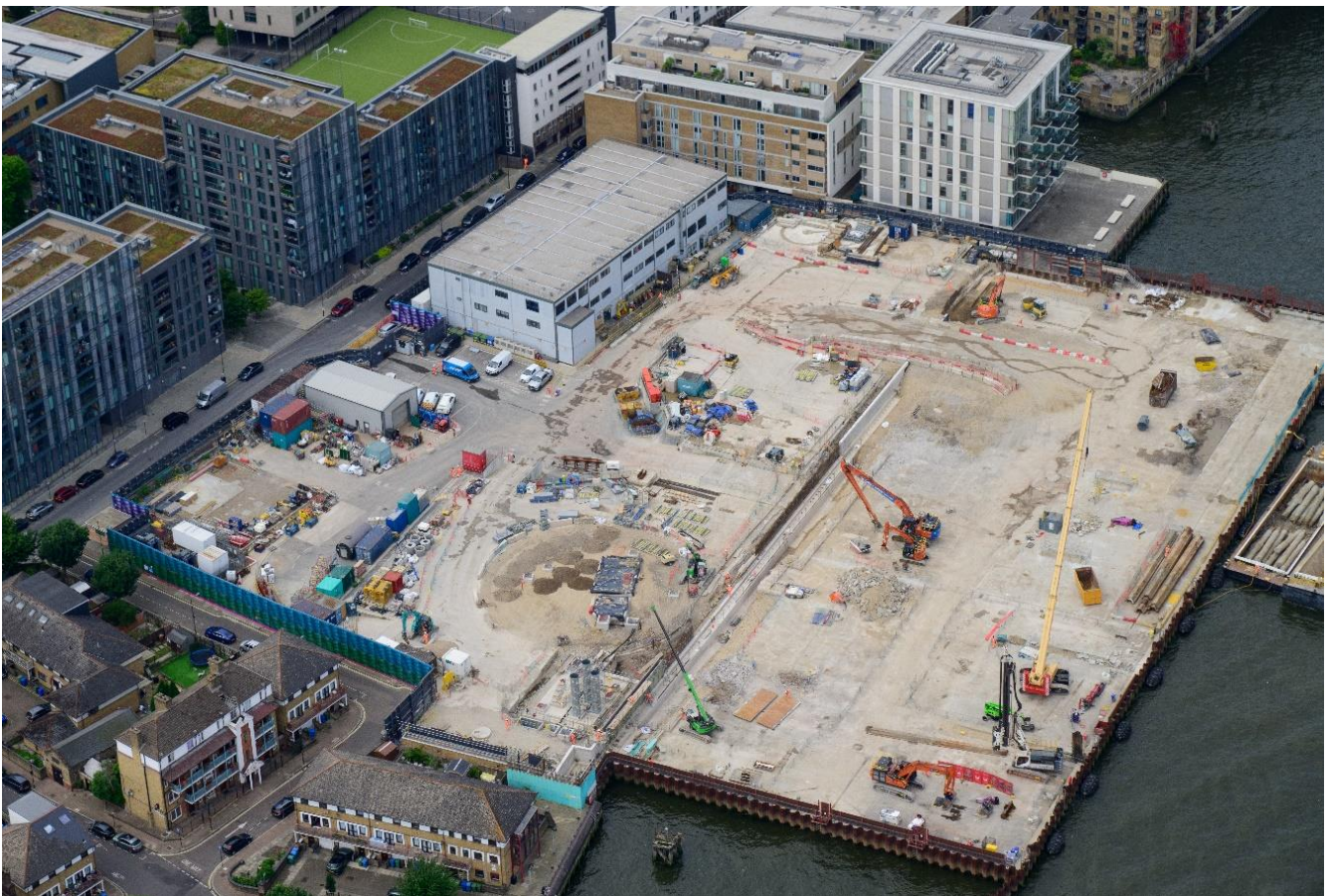


26 July 2024

THIS WEEK

The site team has been:

- Breaking out the concrete platform using large excavators. This will continue into August, when we are removing the cofferdam
- Installing sheet piles for the first temporary crosswall, which is required for the safe removal of the cofferdam
- Constructing the river wall capping beam, which will connect the new permanent river wall into the existing one. Work included installing steel reinforcement, periodic concrete breaking and concreting
- Continuing drainage and ducting work, including the use of an excavator for concrete breaking
- Modifying the flood defence near Luna House, to enable work on the connection to the new permanent river wall



This picture shows the site from the air last week

24 HOUR HELPDESK 08000 30 80 80
helpdesk@tideway.london | Freepost TIDEWAY
www.tideway.london

   @TidewayLondon

THIS WEEKEND

Tomorrow, Saturday, no works are planned. The 24 hour, site-based, security team will undertake their regular patrols while site staff will conduct periodic inspections of safety and monitoring equipment.

NEXT WEEK & LOOKAHEAD

- *We will be regularly breaking out concrete using large excavators until the end of July, with more breaking then planned in August, when we will be removing the cofferdam*
- *We will be installing sheet piles for the second crosswall needed for the safe removal of the cofferdam*
- We will continue with capping beam works for the new river wall, with some periodic concrete breaking, steel fixing and concrete pours
- The capping beam concrete pour next week will be continuous throughout the day, until complete
- Working on the electrical control kiosk and in the Air Treatment Chamber
- Steel fixing, shuttering and concreting activities near Luna House
- There is also planned drainage and ducting work, including use of an excavator for concrete breaking
- Breaking out the existing jetty in preparation for connecting the new river wall

COFFERDAM REMOVAL

- For more information about cofferdam removal, see the **separate information sheet**

WORKING HOURS

Standard working hours are:

- Monday to Friday: 8am to 6pm
- Saturday: 8am to 1pm

Capping beam activities are taking place in extended working hours:

- Monday to Friday: up to 10 pm

Concrete breaking activities will only be:

- Monday to Friday: 8am to 6pm
- Saturday: 9am to 2pm (starting and finishing an hour later than standard hours)
- We will endeavour to finish all works onsite by 6pm, but other support activities, such as moving materials and pouring concrete, may continue until 8 pm
- We have provision agreed with Southwark Council to fix steelwork until 10pm, if necessary
- Certain activities and barge movements that are dependent on the tide may take place 5am to 10pm

INDEPENDENT COMPENSATION PANEL

If you feel affected by our work, please continue to contact the Helpdesk, who can advise you on support available through the Independent Compensation Panel.

Typical mitigation could include daily respite, alternative office accommodation, installation of secondary glazing, blackout blinds or noise cancelling headphones.

If you would like to make an application to the Independent Compensation Panel (ICP), please contact the Helpdesk at helpdesk@tideway.london to request a copy of the form.

OTHER NEWS – The Oarsome Challenge 2024



Last week, some of the team took part in the Oarsome Challenge organised by London Youth Rowing (LYR).

The charity aims to encourage disadvantaged young people to be active and improve their physical, social and mental wellbeing.

Competitors rowed in fancy dress along the River Thames from Greenwich to Mortlake in west London.

A distance of over 17 miles.

LYR enables young people to participate in their sport (indoor and on-water rowing) across London, regardless of background, ethnicity, gender, sexuality, disability or ability.

To date, the annual event has raised over £50,000 to assist this worthwhile cause. The image above shows one of the teams as they rowed past our King Edward Memorial Park Foreshore site in Wapping.

OTHER NEWS – Community Enhancement Fund (CEF)

Under the project's Section 106 agreement, a Community Enhancement Fund of £1 million was allocated for community-led projects to improve the area around our Chambers Wharf site. The most recent panel was in March, when local representatives voted on 8 different community initiatives. There is still approximately **£80,000** left to be allocated, so you still have time to apply before the next closing date: **30 August**.

If you have a community idea and wish to apply, or are interested in joining the panel of local representatives, please email Jacqueline Christie, at Southwark council: Community.Engagement@southwark.gov.uk.

Further information and details on how to apply are available on Southwark Council's [webpage](#).

CONTACT DETAILS

If you have any questions, contact the Tideway Helpdesk on 08000 30 80 80 or at helpdesk@tideway.london.

Jacqueline Christie, Consultation and Involvement Officer for Southwark Council, can be contacted for Tideway enquiries at: Community.Engagement@southwark.gov.uk.

The Southwark Council Environmental Health team can also be contacted directly if you have concerns about our work - environment@southwark.gov.uk