

INFORMATION SHEET



2024-TDWAY- KEMPF-150-ZZ-CO-700036
August 2024



GRANDS PROJETS



KING EDWARD MEMORIAL PARK FORESHORE

This latest information sheet is to update you on progress for the removal of the cofferdam, the temporary area of land we built out into the river.

As the cofferdam is removed, the new permanent river wall is becoming more visible.



An aerial photograph taken in July 2024

KEY INFO

Normal working hours:

- Monday to Friday: 8am to 6pm. Saturdays: 8am to 1pm

Some barge movements occur outside of these hours due to tidal requirements.

Activities include: breaking out concrete slabs, excavation of material and removal of sheet piles

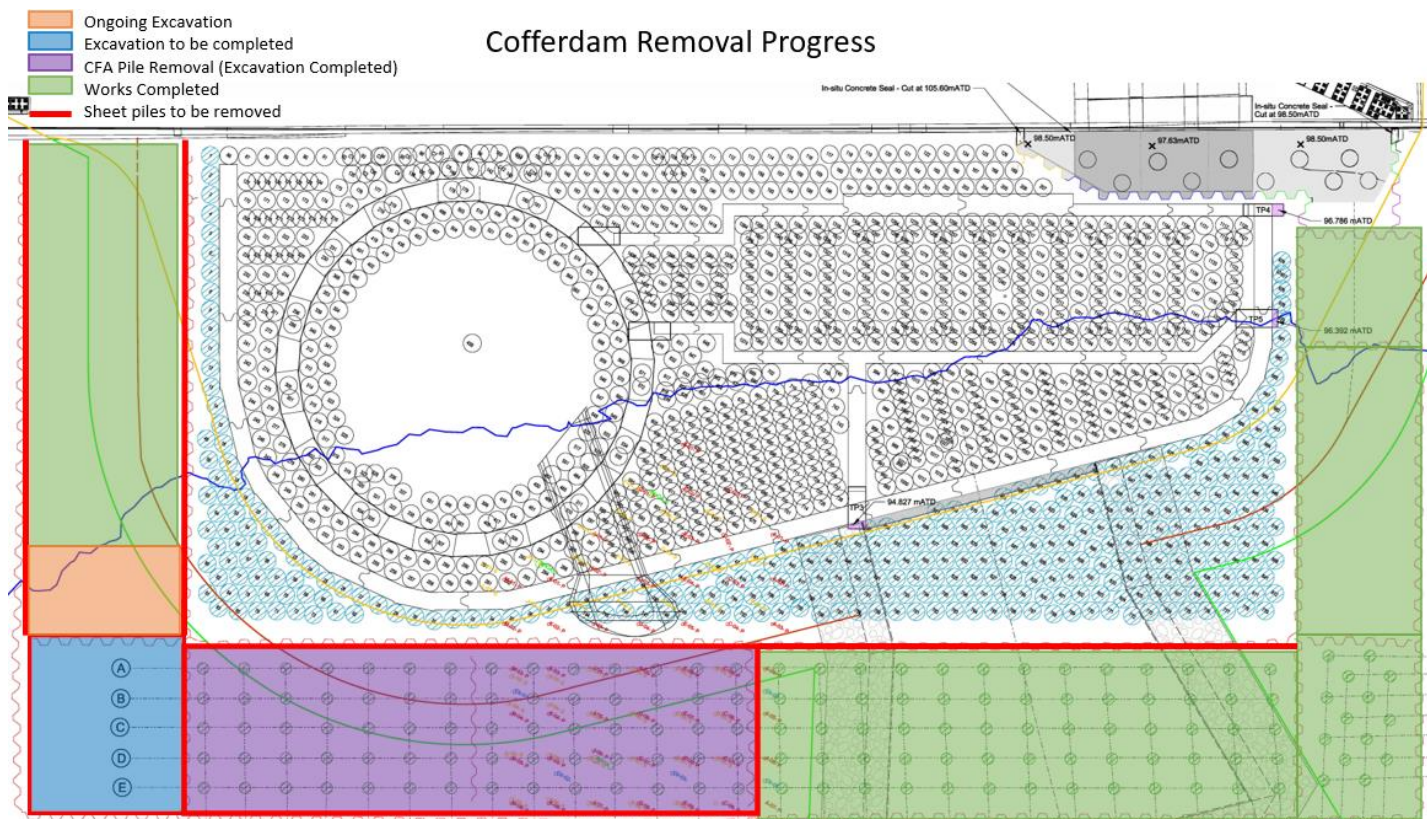
24 HOUR HELPDESK 08000 30 80 80

helpdesk@tideway.london | Freepost TIDEWAY
www.tideway.london



@TidewayLondon

The cofferdam structure was split into cells, which we are removing one at a time. We began closest to Free Trade Wharf (top right in the diagram below) and are now working in the orange and purple cells, moving clockwise to excavate material, which is taken away by barge. We are in the final stages of cofferdam removal, which we expect to complete by the end of September.



The team continues preparations for the planned architectural, landscaping and finishing works, including the new vehicle access route along the southern boundary.

The site team will also be moving the cabin offices and welfare soon, while downsizing the site.

Scour mattress installation, to protect the foreshore from erosion, will start in September and continue until the end of the year. A scour mattress is a series of grout-filled bags that are connected underwater to protect critical infrastructure in river and coastal environments.

Public footpath diversions will continue until the end of 2024, while we are completing our works.

Flows from the northeastern storm relief sewer, that are currently discharged into the river during wet weather, will be diverted and discharged through the hydraulic structures and tunnel we have built by the end of this year. The Thames Tideway Tunnel super sewer is expected to be fully operational in 2025, cleaning the River Thames for future generations of Londoners.

If you feel affected by our work, please contact the Helpdesk, who can advise you on support available through the Independent Compensation Panel.

Typical mitigation could include noise cancelling headphones or temporary respite.

If you would like to make an application to the Independent Compensation Panel (ICP), please contact the Helpdesk at helpdesk@tideway.london to request a copy of the application form.

INFORMATION SHEET



2024-TDWAY- KEMPF-150-ZZ-CO-700036
August 2024



The site team has now completed trials for the Combined Sewer Outfall (CSO) warning lights at the King Edward Memorial Park Foreshore site.

These warning lights are used to indicate when a CSO is discharging into the river.

The PLA (Port of London Authority) issued a standard safety warning (map and image below) with the opportunity for river users to observe the lights in operation and provide feedback.



We are happy to provide information in other languages and formats such as braille or large print. Please contact the Tideway Helpdesk on 08000 308080

KEY INFO

Normal working hours:

- Monday to Friday: 8am to 6pm. Saturdays: 8am to 1pm

Some barge movements outside of these hours due to tidal requirements.

Activities include: breaking out concrete slabs, excavation of material and removal of sheet piles

24 HOUR HELPDESK 08000 30 80 80

helpdesk@tideway.london | Freepost TIDEWAY
www.tideway.london

