

INFORMATION SHEET



2024-TDWAY- GREPS-150-ZZ-CO-700034
September 2024



GRANDS PROJETS



GREENWICH PUMPING STATION CONSTRUCTION UPDATE

The team at the Greenwich Pumping Station site is continuing construction works for the Thames Tideway Tunnel on and around the Thames Water Pumping station site.

As we approach the end of construction on the project in 2025, the local Greenwich team is working on site reinstatement and planned architectural and landscaping works.

NORMAN ROAD

We have been reinstating the former brick perimeter wall adjacent to Norman Road to how it was prior to construction.

Norman Road footpath and carriageway works will mean some lane closures until the end of the year. Access for both vehicle traffic and pedestrians will be maintained at all times, although there will be periodic temporary traffic lights and pedestrian footway diversions in Norman Road.

FOOTWAY AND CYCLEWAY C10 REINSTATEMENT

From 14 October the temporary footway and cycleway, adjacent to the Network Rail viaduct, will be closed for around four weeks. This is while we undertake works at the Ha'penny Hatch, to return the footway and C10 cycleway (also known as Quietway Q1) to their original alignment under the DLR viaduct.

Signage will be in place to let cyclists and pedestrians know about the closure.

KEY INFO

WORKING HOURS ONSITE

Normal: Monday to Friday 8am to 6pm
Saturday 8am to 1pm

Extended: Monday to Friday 7am to 7pm
Saturday 8am to 5pm

There is a 1 hour mobilisation period before and after these standard working hours

Temporary footway and cycleway closure from week beginning 14 October for around 4 weeks

24 HOUR HELPDESK 08000 30 80 80

helpdesk@tideway.london | Freepost TIDEWAY
www.tideway.london



PHOENIX WHARF

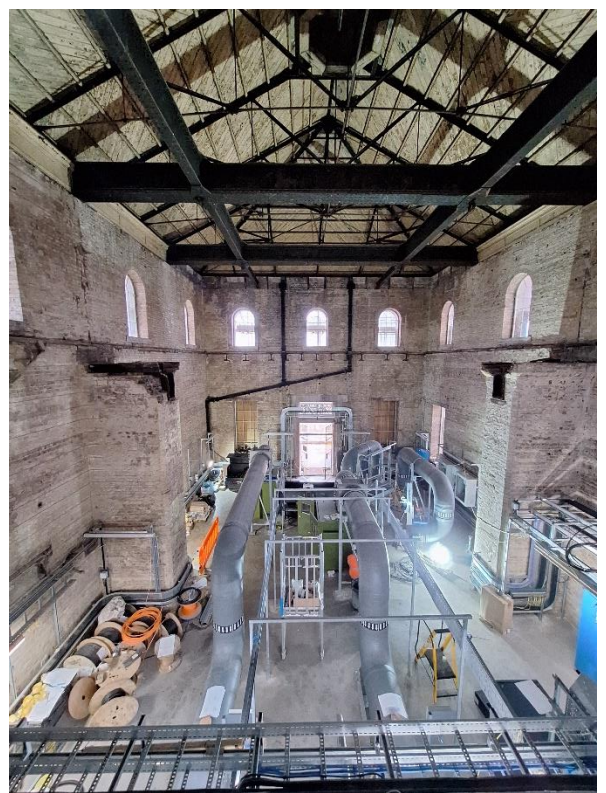
Deptford Creek ecological enhancement works are planned to begin later this year. These will be subject to tidal levels and may require an early start (4am - 7am) or later finish (6pm-9pm) as a result.

We will be improving the intertidal terraces on the river walls in front of the Trinity Laban Centre, to help them fulfil their ecological purpose for invertebrates and plant life.

Gravel will be installed on the riverbed as well, to return it closer to its state before the Phoenix Wharf compound was installed during tunnelling.

EAST BEAM ENGINE HOUSE

The Victorian, grade 2 listed, East Beam Engine House has had new tiles laid on the roof as part of its restoration programme. Here is a glimpse at the refurbished interior as well.



ARCHITECTURE & LANDSCAPING

We have been removing the existing concrete platforms and foundations to prepare the ground for the permanent site layout. This is mostly complete, with the exception of the temporary cycleway. Further landscaping works within the site boundary will continue until January 2025, including restoring the former pedestrian and cycleway, architectural metalworks plus grass and tree planting.

We apologise for any disruption this essential work may cause. We will as always be working within noise limits agreed with the council, plus damping down to reduce any dust.

The site team will continue to try our best to minimise disruption, but we understand some people are affected more than others by noise and vibration during construction work.

INFORMATION SHEET



Tideway



GRANDS PROJETS



If you feel you may be affected by any of Tideway's work, including these activities, contact the Helpdesk - helpdesk@tideway.london - to discuss support available through the Independent Compensation Panel process.

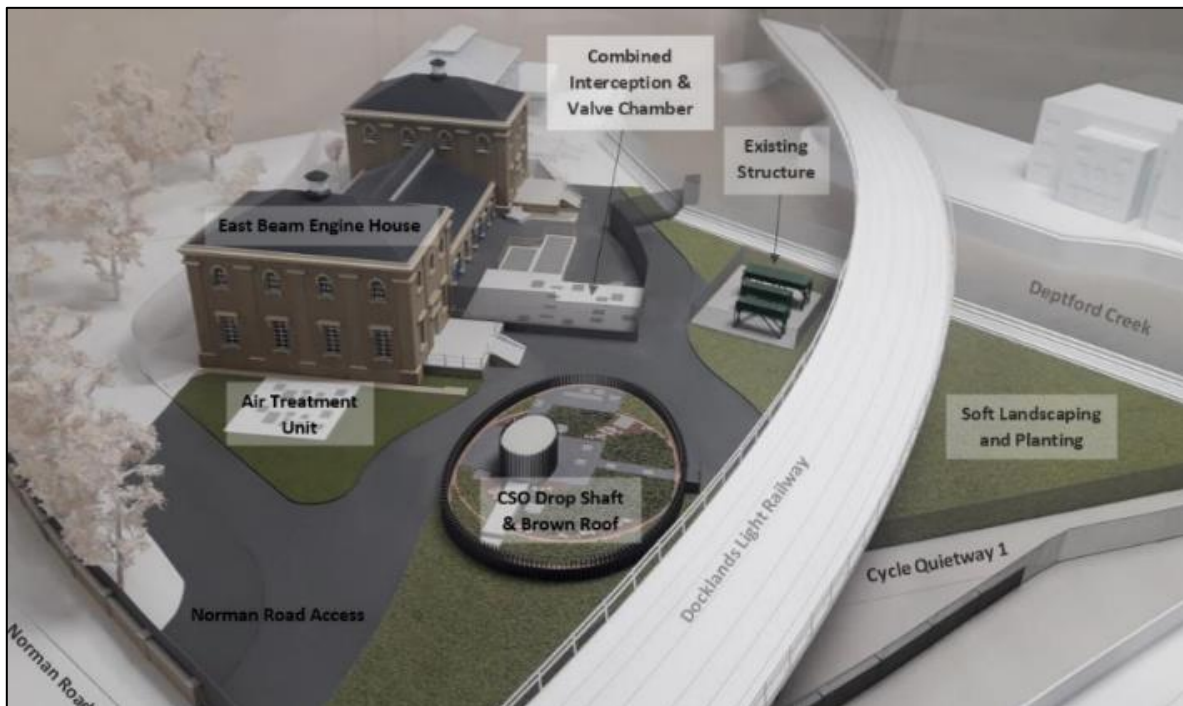


Image shows an overview of the final site

We would like to thank you for your patience and co-operation while we continue construction for the Thames Tideway Tunnel at the Greenwich Pumping Station site.

KEY INFO

WORKING HOURS ONSITE

Normal: Monday to Friday 8am to 6pm
Saturday 8am to 1pm

Extended: Monday to Friday 7am to 7pm
Saturday 8am to 5pm

There is a 1 hour mobilisation period before and after these standard working hours

Temporary footway and cycleway closure from week beginning 14 October for around 4 weeks

24 HOUR HELPDESK 08000 30 80 80

helpdesk@tideway.london | Freepost TIDEWAY
www.tideway.london



@TidewayLondon