

WEEKLY SITE UPDATE

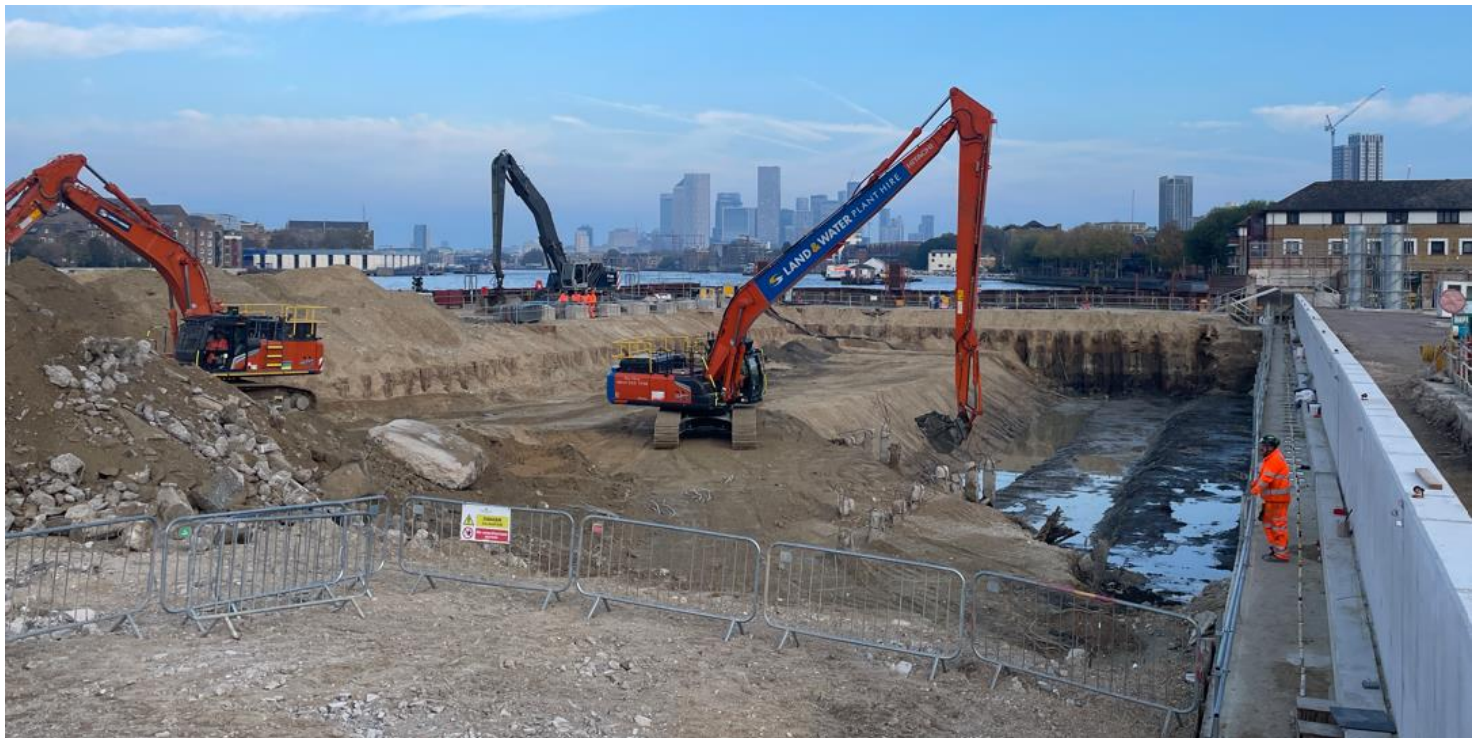


8 November 2024

THIS WEEK

The site team has been:

- Breaking out the concrete platform using large excavators while we are removing the cofferdam
- Removing the cofferdam fill material and stockpiling it with excavators to be removed by barge
- Exposing the old concrete jetty piles and continuing with their removal
- Installing formwork and steel for the new Luna House jetty slab
- Working on the foreshore for access to the existing jetty and undertaking preparation works
- Continuing drainage and ducting work, including using an excavator for concrete breaking
- Constructing the surface drainage and architecture and landscape works behind the kiosk
- Continuing kiosk MEICA works (Mechanical, Electrical, Instrumentation, Control and Automation)
- Continuing street works at Loftie Street for the new road layout and entrance into the Thames Water area. This includes installing services in the road, removing the existing road, footpath and existing hoarding, preparing the area for permanent works and relocation of the light post. Vehicle access through Loftie Street is limited to resident access only
- Received one abnormal load



Cofferdam removal progress

24 HOUR HELPDESK 08000 30 80 80
helpdesk@tideway.london | Freepost TIDEWAY
www.tideway.london



THIS WEEKEND

We are planning the following activities:

- Mobilisation of an excavator
- Excavation of the hinterland and removal of concrete jetty piles
- Pouring concrete for the slab at Luna House, using the crane
- Backfilling areas with pavement material

The 24 hour, site-based, security team will be on regular patrol, while site staff will conduct periodic inspections of safety and monitoring equipment.

NEXT WEEK & LOOKAHEAD

The site team will be:

- Preparing concrete which includes breaking, installing formwork and steel and then pouring the new Luna House river walls
- Working on the foreshore for access to the existing jetty and underside concrete works
- Continuing drainage and ducting work, including the use of an excavator for concrete breaking
- Breaking out the concrete platform using large excavators while we are removing the cofferdam
- Removing the hinterland fill material and stockpiling it with excavators to be removed by barge
- Exposing the old concrete jetty piles and continuing with their removal
- Constructing the surface drainage and architecture and landscape works behind the kiosk
- Continuing kiosk MEICA works (Mechanical, Electrical, Instrumentation, Control and Automation)
- An abnormal load will leave the site with some plant on Monday evening after 8pm
- Continuing street works at Loftie Street for the new road layout and entrance into Thames Water area. This includes installation of services in the road, removal of the existing road and footpath, removal of the existing hoarding, preparing the area for permanent works, relocation of the light post. Vehicle access through Loftie Street is limited to resident access only.

COFFERDAM REMOVAL

For more information about cofferdam removal, see the separate information sheet [here](#)

WORKING HOURS

Standard working hours are:

- Monday to Friday: 8am to 6pm
- Saturday: 8am to 1pm

Concrete breaking activities will only be:

- Monday to Friday: 8am to 6pm
- Saturday: 9am to 2pm (starting and finishing an hour later than standard hours)
- We will endeavour to finish all works onsite by 6pm, but other support activities, such as moving materials and pouring concrete, may continue until 8 pm
- Certain activities for the cofferdam removal such as barge movements, and the Luna House, are dependent on the tide and may take place 5am to 10pm

OTHER NEWS – Community Liaison Working Group

Our thanks to all those residents who came to Monday's community liaison working group meeting in our site offices for a productive presentation and discussion around work onsite.

Slides from the session are available here: 4 November 2024 [presentation](#).

OTHER NEWS – Community Enhancement Fund (CEF)

Under the project's Section 106 agreement, a Community Enhancement Fund of £1 million was allocated for community-led projects to improve the area around our Chambers Wharf site. The results of the latest round of applications were shared at the Community Liaison Working Group and are included in the [presentation](#).

If you have a community idea and wish to apply for some of the remaining money, or are interested in joining the panel of local representatives, please email Jacqueline Christie, at Southwark Council: Community.Engagement@southwark.gov.uk. Just over £30,000 remains of the original £1 million allocation.

Further information and details on how to apply are available on Southwark Council's [webpage](#).

INDEPENDENT COMPENSATION PANEL

If you feel affected by our work, please continue to contact the Helpdesk, who can advise you on support available through the Independent Compensation Panel. Typical mitigation could include daily respite, alternative office accommodation, installation of secondary glazing, blackout blinds or noise cancelling headphones. If you would like to make an application to the Independent Compensation Panel (ICP), please contact the Helpdesk at helpdesk@tideway.london to request a copy of the form.

CONTACT DETAILS

If you have any questions, contact the Tideway Helpdesk on 08000 30 80 80 or at helpdesk@tideway.london. Jacqueline Christie, Consultation and Involvement Officer for Southwark Council, can be contacted for Tideway enquiries at: Community.Engagement@southwark.gov.uk.

The Southwark Council Environmental Health team can also be contacted directly if you have concerns about our work - environment@southwark.gov.uk