

WEEKLY SITE UPDATE



17 January 2025

Dear Neighbour

This is your weekly newsletter from the site team at Chambers Wharf.

CURRENT AND UPCOMING SITE ACTIVITIES

Location	Activity	When/duration
Cofferdam	All old concrete jetty piles exposed and removed	Continues until mid-February
Cofferdam	Breaking out the concrete platform, using large excavators, as we remove the cofferdam	Continues until the Summer
Cofferdam	Removing excavated fill material and stockpiling it with excavators, to be removed by barge	Continues until the Summer
Cofferdam	Dismantling sections with thermal cutting equipment	Continues until the Summer
Foreshore	Accessing under the existing jetty for the new slab	Continues until the Summer
West side of site	Concrete works for the new Luna House jetty	Continues until the end of Jan.
East side of site	Drainage and ducting work, including the use of an excavator for concrete breaking	Continues until the end of Jan.
East side of site	Continuing kiosk MEICA works (Mechanical, Electrical, Instrumentation, Control and Automation) plus architecture and landscape work around the kiosk	Continues until the end of Jan.
Riverfront	Installing architectural river wall panels	Continues until late April
Whole site	River wall panel deliveries and unloading	Continues until the end of Feb.

THIS WEEKEND

There is work planned this weekend, including cofferdam excavation, Loftie Street gate construction and river wall works. Working hours will be standard: 8am to 1pm. The 24-hour, site-based, security team will be on regular patrol, while site staff will conduct periodic inspections of safety and monitoring equipment.

WORKING HOURS

Tidally-affected activities, such as the river wall panel installation and cofferdam removal, may take place from 5am to 10pm. This includes excavation, jetty pile removal, cell dismantling, stockpiling materials, lifting activities plus barge loading and movements. Next week, due to the tide times, the team will be working up until 10pm.

Normally standard working hours are:

- Monday to Friday: 8am to 6pm
- Saturday: 8am to 1pm

24 HOUR HELPDESK 08000 30 80 80

helpdesk@tideway.london | Freepost TIDEWAY

www.tideway.london

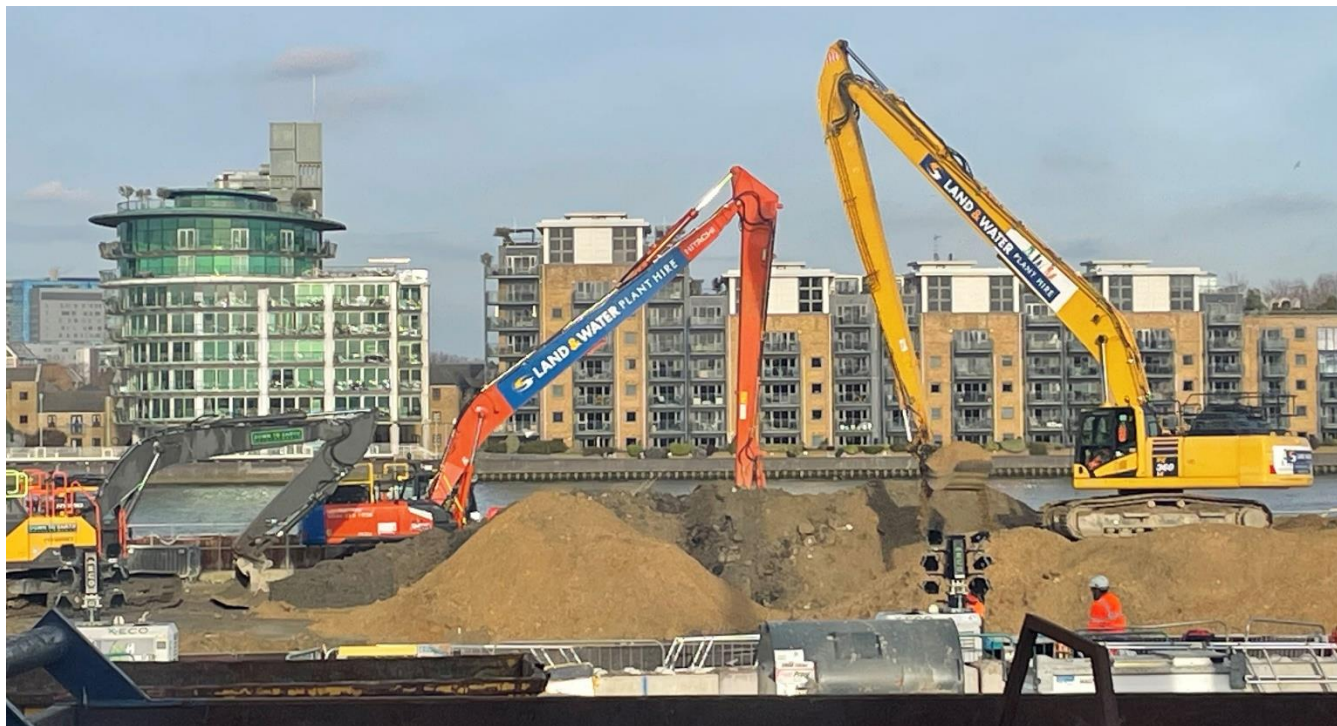


@TidewayLondon

Concrete breaking activities will only be:

- Monday to Friday: 8am to 6pm.
- Saturday: 9am to 2pm (starting and finishing an hour later than standard hours)

We will endeavour to finish all works onsite by 6pm, but other support activities, such as moving materials and pouring concrete, may continue until 8 pm.



INDEPENDENT COMPENSATION PANEL

If you feel affected by our work, please contact the Helpdesk, who can advise on support available through the Independent Compensation Panel. Mitigation could include daily respite, alternative office accommodation, installation of secondary glazing, blackout blinds or noise cancelling headphones. If you would like to make an application to the Independent Compensation Panel (ICP), please contact helpdesk@tideway.london for a copy of the form.

OTHER NEWS – Community Enhancement Fund (CEF)

Under the project's Section 106 agreement, a Community Enhancement Fund of £1 million was allocated for community-led projects to improve the area around our Chambers Wharf site. There is £77,000 remaining to be allocated. See the separate flyer attached to today's email for further information.

The next deadline for applications is the end of February. If you have a community idea and wish to apply for some of the remaining money or are interested in joining the panel of local representatives, please email Jacqueline Christie, at Southwark Council: Community.Engagement@southwark.gov.uk.

Further information and details on how to apply are available on Southwark Council's [webpage](#).

CONTACT DETAILS

- Tideway Helpdesk: 08000 30 80 80 or helpdesk@tideway.london.
- Southwark Council Project Officer, Jacqueline Christie: Community.Engagement@southwark.gov.uk.
- Southwark Council Environmental Health: environment@southwark.gov.uk