

# WEEKLY SITE UPDATE



**21 March 2025**

Dear Neighbour

This is your weekly newsletter from the site team at Chambers Wharf.

## CURRENT AND UPCOMING SITE ACTIVITIES

Location	Activity	When/duration
West side of site	Minor concrete works for the new Luna House jetty	Continues to the end of April
East side of site	Continuing kiosk MEICA works (Mechanical, Electrical, Instrumentation, Control and Automation) plus architecture and landscape work around the kiosk	Continues to the end of April
East side of site	Paving works over the shaft	Continues to the end of May
Riverfront	Installing 75 architectural river wall panels-20 remain	Continues until late April
Cofferdam	Breaking out the concrete platform, using large excavators, as we remove the cofferdam	Continues until the Summer
Cofferdam	Removing excavated fill material and stockpiling it with excavators, as it will all be removed by barge	Continues until the Summer
Cofferdam	Dismantling sections with thermal cutting equipment	Continues until the Summer
Cofferdam	Sheet pile removal by vibration. 22 / 410 out so far	Continues until the Summer
Foreshore	Accessing under the existing jetty for the new slab	Continues until the Summer

## THIS WEEKEND

The site team will be working tomorrow, Saturday, but not removing sheet piles.

The 24-hour, site-based, security team will be on regular patrol, while site staff will conduct periodic inspections of safety and monitoring equipment.

Next week we will be working on Wednesday until 7:30pm and on Thursday until 8:00pm.

The team will begin earlier on Friday (5:00am) and work on Saturday 29 March from 7:00am to 2:00 pm.

No abnormal loads are planned.

## WORKING HOURS

Normal standard working hours are:

- Monday to Friday: 8am to 6pm
- Saturday: 8am to 1pm

Concrete breaking activities will only be:

- Monday to Friday: 8am to 6pm.
- Saturday: 9am to 2pm (starting and finishing an hour later than standard hours)

**24 HOUR HELPDESK 08000 30 80 80**

helpdesk@tideway.london | Freepost TIDEWAY

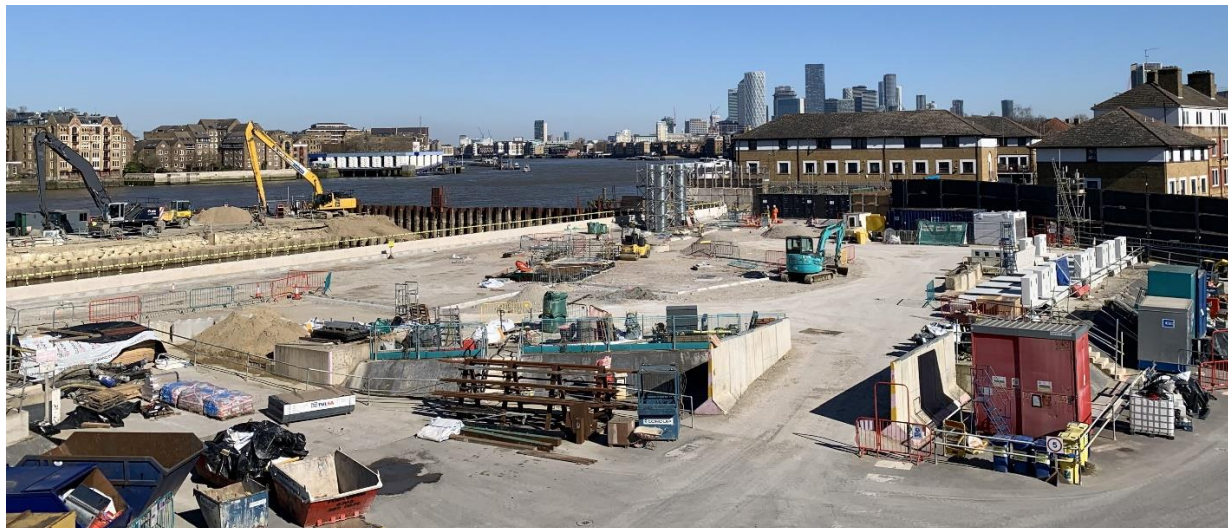
www.tideway.london



@TidewayLondon

We endeavour to finish all work onsite by 6pm, but other support activities, such as moving materials and pouring concrete, may continue until 8pm.

Tidally affected activities, such as river wall panel installation and cofferdam removal, may take place from 5am to 10pm. This includes excavation, cell dismantling, stockpiling materials, lifting activities plus barge loading and movements. We do not plan any noisy activities after 6pm.



*Photographs shows the site looking north-east from our offices*

### INDEPENDENT COMPENSATION PANEL

If you feel affected by our work, please contact the Helpdesk, who can advise on support available through the Independent Compensation Panel. Mitigation could include daily respite, alternative office accommodation, installation of secondary glazing, blackout blinds or noise cancelling headphones.

If you would like to make an application to the Independent Compensation Panel (ICP), please contact [helpdesk@tideway.london](mailto:helpdesk@tideway.london) for a copy of the form.

### OTHER NEWS – Community Enhancement Fund (CEF) and Section 106 funded projects

Under the project's Section 106 agreement, a Community Enhancement Fund of £1 million was allocated for community-led projects to improve the area around our Chambers Wharf site.

The CEF panel met this week to deliberate on the most recent round of applications for the funding and will be deciding where the money goes in the coming weeks.

Further information about the fund is available on Southwark Council's [webpage](#).



We are highlighting successful projects that received funding in these weekly updates. If you know a project that received funding and you would like us to highlight it, please send us a great photo!

This week's image highlights landscape planting in Wilson Grove.

### CONTACT DETAILS

- Tideway Helpdesk: 08000 30 80 80 or [helpdesk@tideway.london](mailto:helpdesk@tideway.london)
- Southwark Council Environmental Health: [environment@southwark.gov.uk](mailto:environment@southwark.gov.uk)