

# WEEKLY SITE UPDATE



GRANDS PROJETS



16 May 2025

Dear Neighbour

This is your weekly newsletter from the site team at Chambers Wharf.

## CURRENT AND UPCOMING SITE ACTIVITIES

Location	Activity	When/duration
Riverfront	Installing 77 architectural river wall panels - 14 remain	Continues until June
West side of site	Minor concrete works for the new Luna House jetty	Continues this month
East side of site	Block paving installation over the shaft	Continues to the end of May
East side of site	MEICA (Mechanical, Electrical, Instrumentation, Control & Automation) has just minor work remaining; plus architecture and landscape work around the kiosk	Continues to the end of June
Loftie St / Chambers St	Hoarding adjustments around the site. Local traffic management in place managing works outside the site	Under way through July
Cofferdam	Breaking out the concrete platform, using large excavators, as we remove the cofferdam	Continues until the Summer
Cofferdam	Removing excavated fill material and stockpiling it with excavators, as it will all be removed by barge	Continues until the Summer
Cofferdam	Dismantling sections with thermal cutting equipment	Continues until the Summer
Cofferdam & Marine	Sheet pile extraction: 80/410 out so far. 24 additional piles cut to foreshore level to allow barge movements	Continues until the Summer
Foreshore	Accessing under the existing jetty for the new slab	Continues until the Summer

No abnormal loads are planned next week.

## THIS WEEKEND

The site team will **not** be working tomorrow.

The 24-hour onsite security team will be on regular patrol; site staff will also monitor and inspect equipment.

## WORKING HOURS

Next week we are planning to work the following hours for tidal activities:

- Monday 19 May 7am until 5pm
- Tues 20 7am until 5pm
- Wed 21 7am until 5pm
- Thurs 22 7am until 5pm
- Fri 23 5am until 2pm
- Sat 24 - Mon 26 No work planned over the bank holiday weekend

24 HOUR HELPDESK 08000 30 80 80

helpdesk@tideway.london | Freepost TIDEWAY

www.tideway.london



Normal working hours for other activities are:

- Monday to Friday: 8am - 6pm
- Saturday: 8am - 1pm

Concrete breaking activities will only be:

- Monday to Friday: 8am - 6pm
- Saturday: 9am - 2pm (starting and finishing an hour later than standard hours)

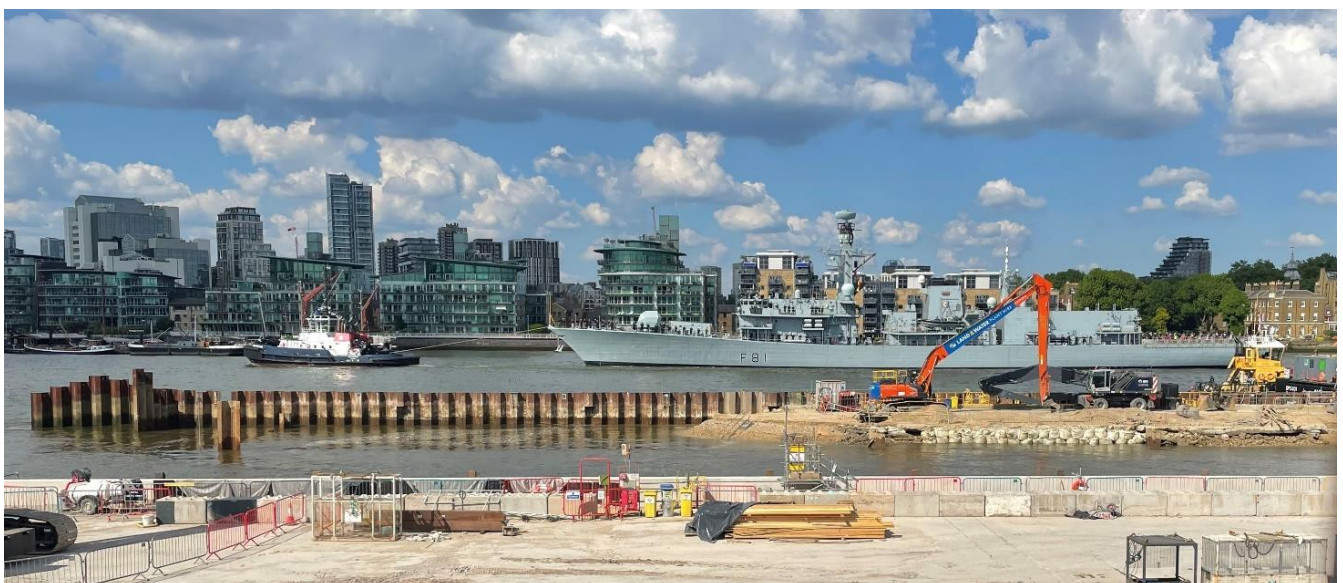
We endeavour to finish all work onsite by 6pm, but other support activities, such as moving materials and pouring concrete, may continue until 8pm.

Tidally affected activities, such as river wall panel installation and cofferdam removal, may take place from 5am to 10pm. This includes excavation, cell dismantling, stockpiling materials, lifting activities plus barge loading and movements. We do not plan any noisy activities after 6pm.



*Picture shows the removal of a pile from the eastern side of the cofferdam*

#### **OTHER NEWS – HMS Sutherland passed upriver on Monday afternoon**





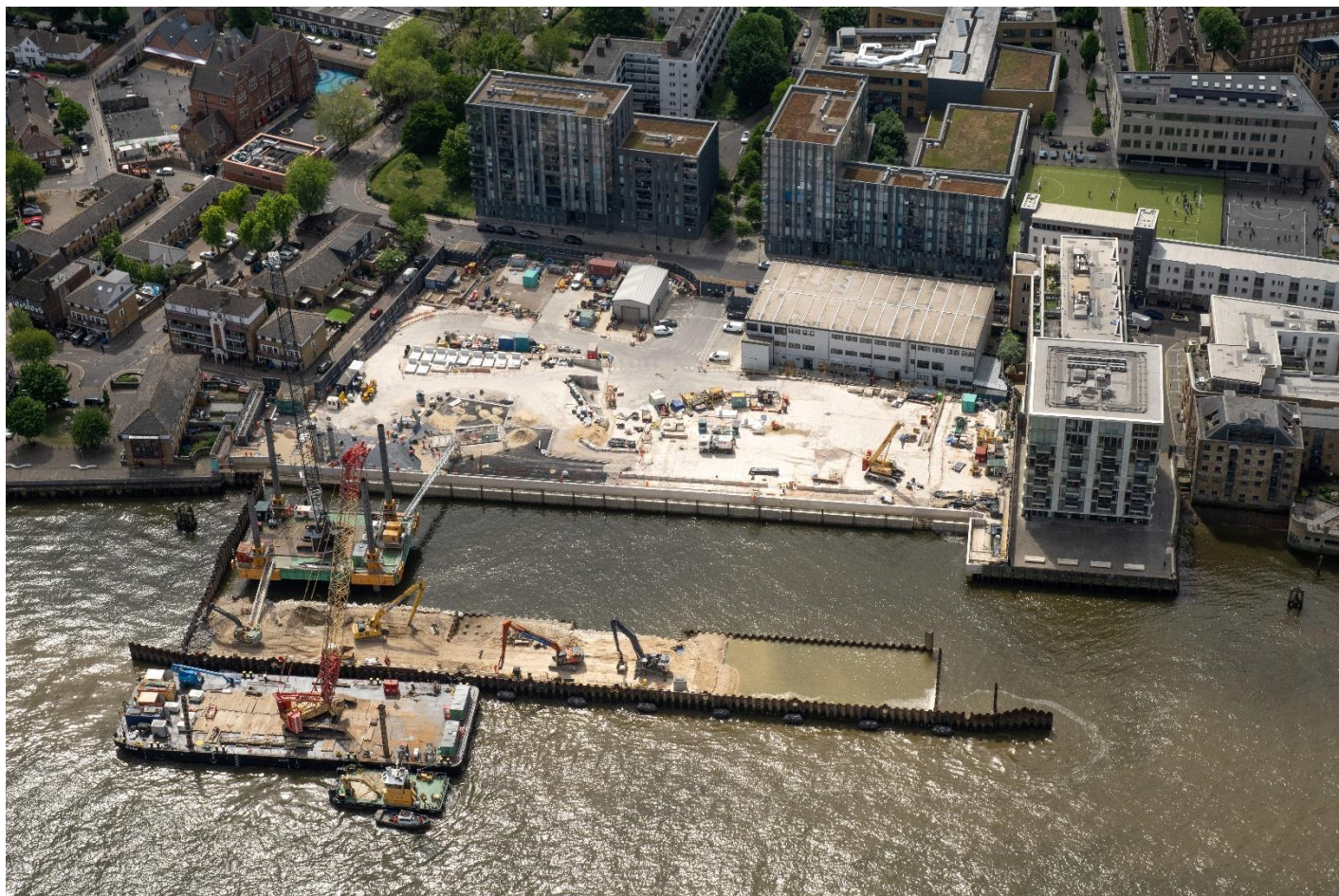
### OTHER NEWS – Wilder Family Planting Day, Saturday 7 June 12-5pm

Wilder, a social enterprise, is running a family planting day between Rudge and Tupman on the Dickens Estate on **Saturday 7 June** from 12-5pm.

This project is funded by Southwark Council as part of the Community Enhancement Fund (CEF) for locally-led community initiatives around the Tideway site.

All are welcome to come and help with planting and building a bug hotel to create a greener, more inviting space. Gloves and tools will be provided. Contact [mail@wearewilder.co.uk](mailto:mail@wearewilder.co.uk) if you would like to attend. Please note this is not a Tideway event.

### OTHER NEWS – Latest Tideway aerial photography



*Last week saw all the Tideway sites photographed from the air; here is Chambers Wharf*

### INDEPENDENT COMPENSATION PANEL

If you feel affected by our work, please contact the Helpdesk, who can advise on support available through the Independent Compensation Panel. Mitigation could include daily respite, alternative office accommodation, installation of secondary glazing, blackout blinds or noise cancelling headphones.

If you would like to make an application to the Independent Compensation Panel (ICP), please contact [helpdesk@tideway.london](mailto:helpdesk@tideway.london) for a copy of the form.

### CONTACT DETAILS

- Tideway Helpdesk: 08000 30 80 80 or [helpdesk@tideway.london](mailto:helpdesk@tideway.london)
- Southwark Council Environmental Health: [environment@southwark.gov.uk](mailto:environment@southwark.gov.uk)